

New Firmware Upgrade Procedure

Note:

To upgrade from old F/W version listed below, follow up the upgrade procedure on this document to upgrade to the latest F/W.

| Model | Old F/W | The latest F/W |
|-----------|--|----------------|
| DGS-1216T | V4.00.xx | V4.21.01 |
| DGS-1224T | V4.00.xx | V4.21.01 |
| DES-1228P | V1.00.xx or V1.10.xx or V1.20.xx | V1.31.01 |
| DES-1228 | V1.00.xx | V1.11.01 |
| DES-1252 | V1.00.xx | V1.11.01 |

Upgrade Procedure:

User has to upgrade **three** different firmware files (FWU.hex, WSSldr.hex, FWN.hex) in order to accomplish new firmware upgraded. Upgrade firmware through SmartConsole Utility or Web GUI as following steps:

File Requirement :

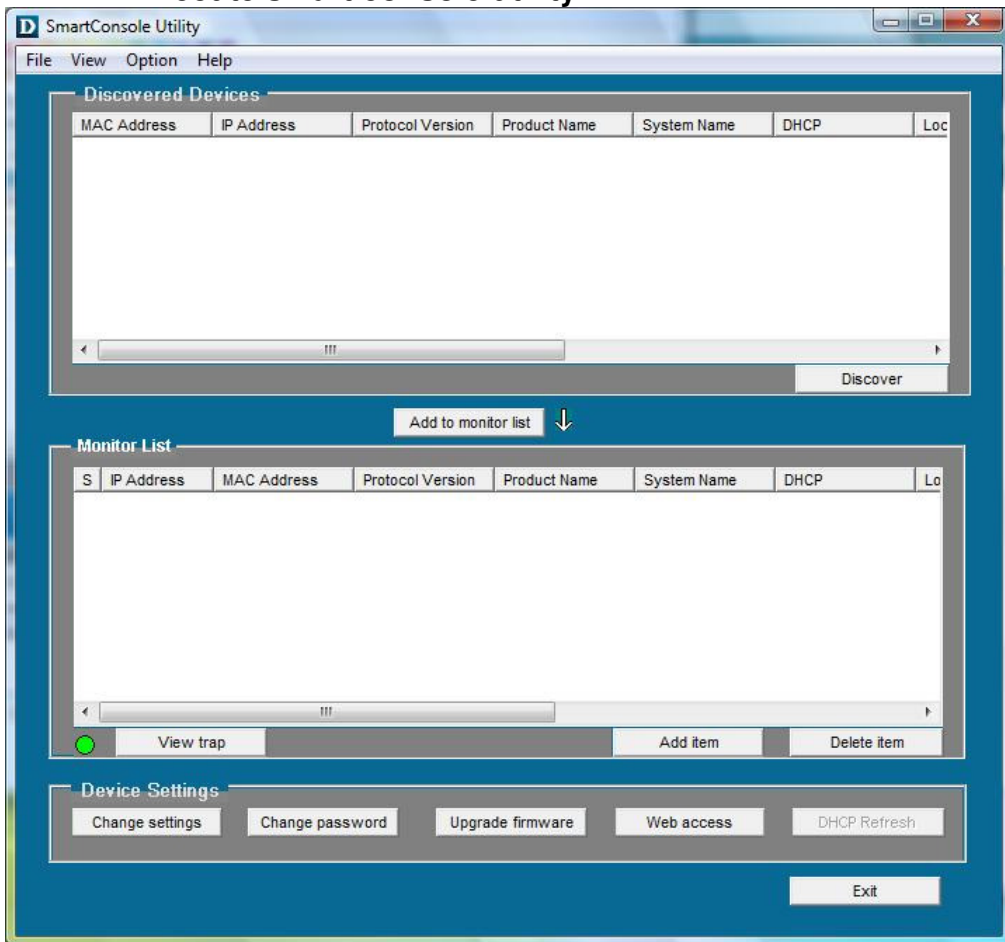
| General Name | DGS-1216T v.D1 | DGS-1224T v.D1 |
|--------------|--------------------------|--------------------------|
| FWU.hex | 1216TFWU.hex | 1224TFWU.hex |
| WSSldr.hex | 1216Tldr.hex | 1224Tldr.hex |
| FWN.hex | DGS-1216T_DX_4_21_01.hex | DGS-1224T_DX_4_21_01.hex |

| General Name | DGS-1228P v.A1 | DGS-1228 v.A1 |
|--------------|----------------------------|-------------------------|
| FWU.hex | 1228PFWU.hex | 1228FWU.hex |
| WSSldr.hex | 1228Pldr.hex | 1228ldr.hex |
| FWN.hex | DES-1228P_A1A2_1_31_01.hex | DES-1228_A1_1_11_01.hex |

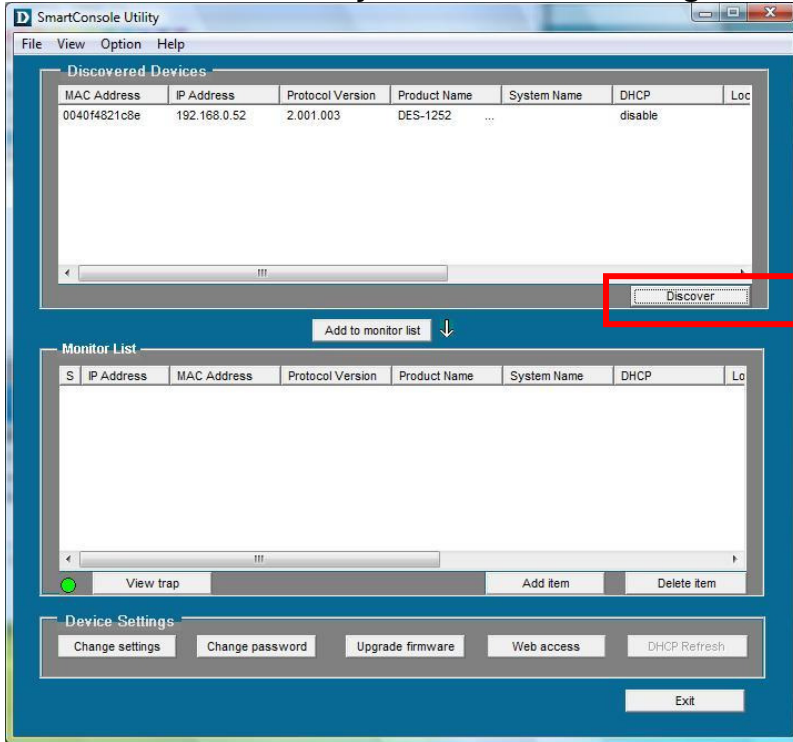
| General Name | DGS-1252 v.A1 | N/A |
|--------------|-------------------------|-----|
| FWU.hex | 1252FWU.hex | N/A |
| WSSldr.hex | 1252ldr.hex | N/A |
| FWN.hex | DES-1252_A1_1_11_01.hex | N/A |

1. Upgrade firmware through SmartConsole Utility (Please refer to below step. i-xi)

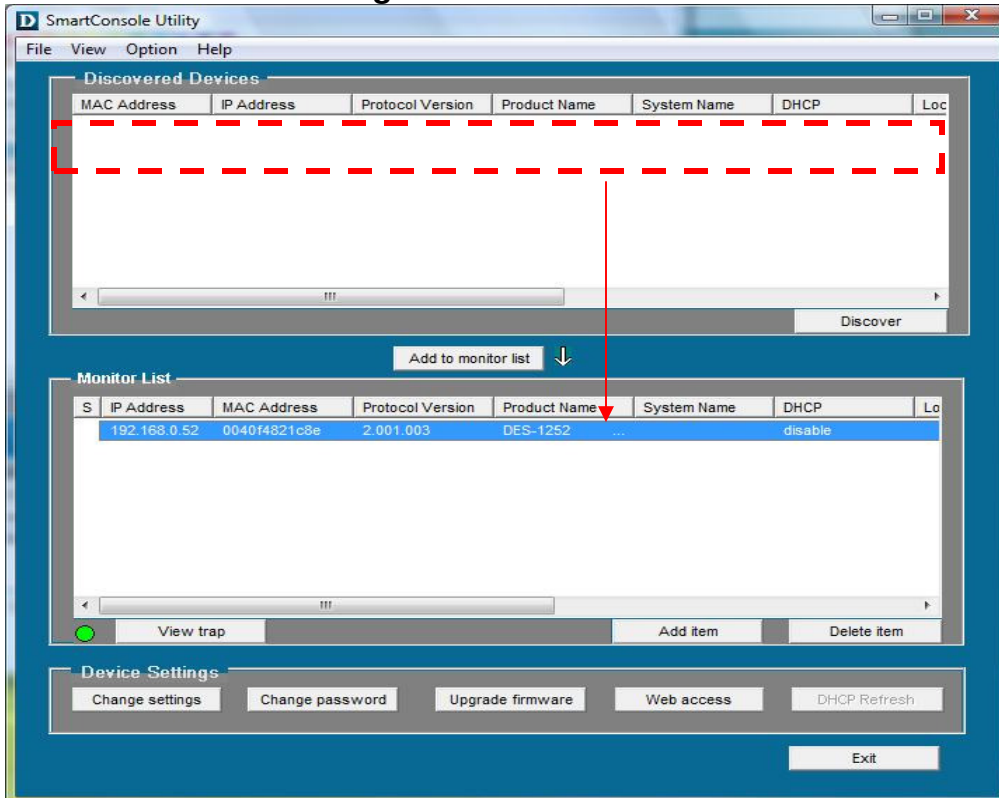
i. Execute smart console utility



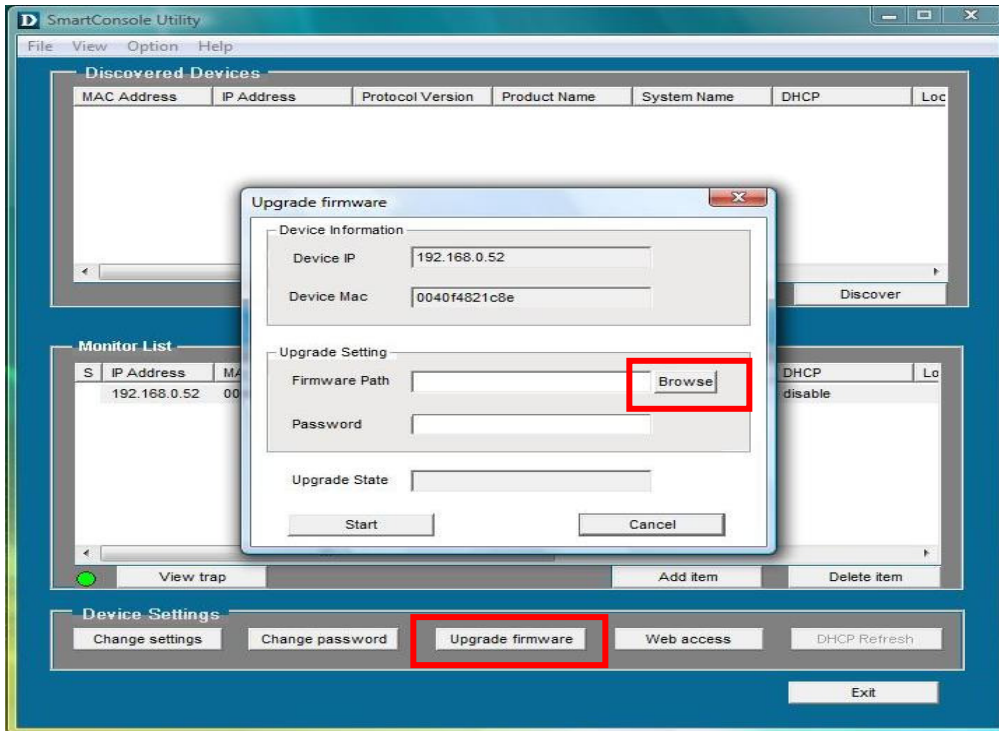
ii. Click Discovery button to search target switch



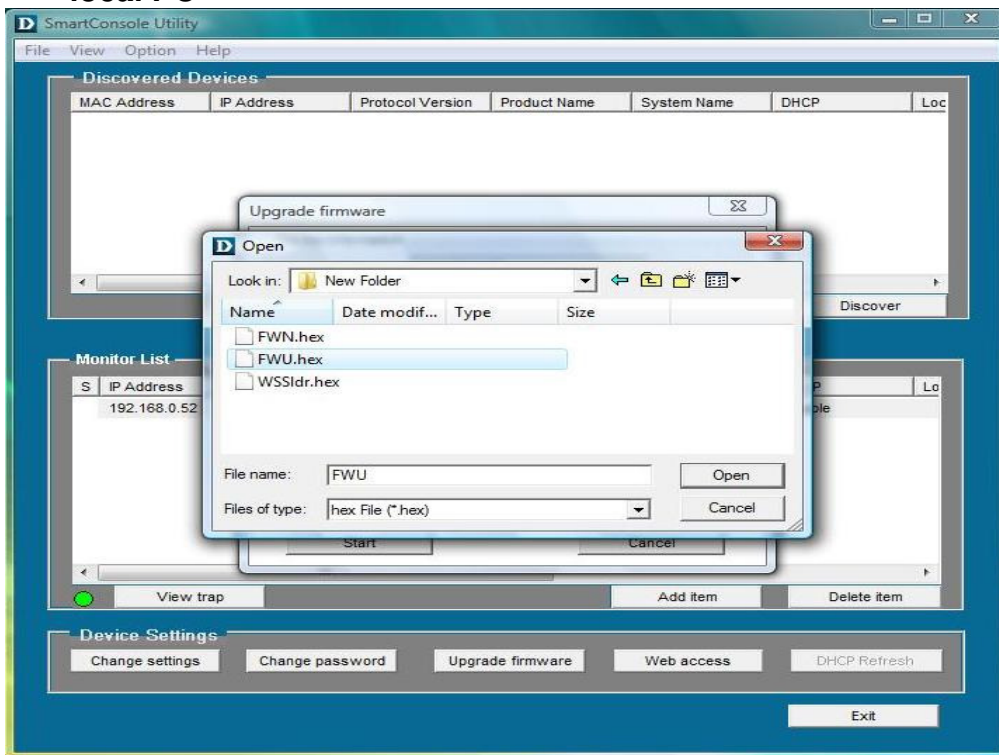
iii. Double click target switch to add to monitor list



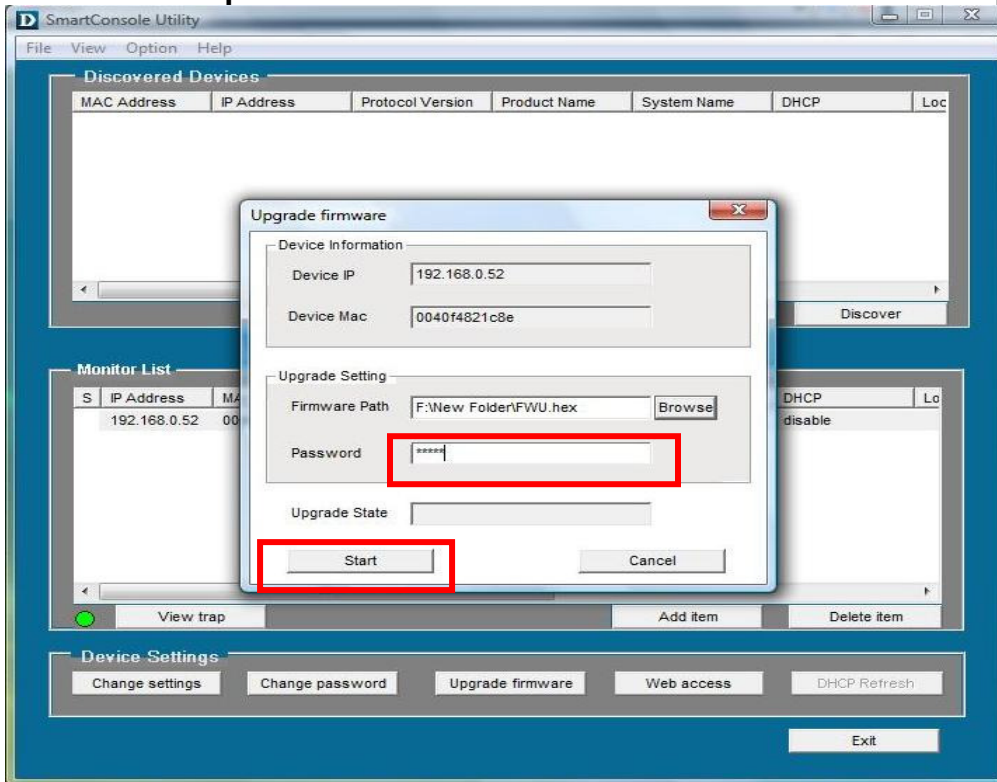
iv. Click firmware upgrade button



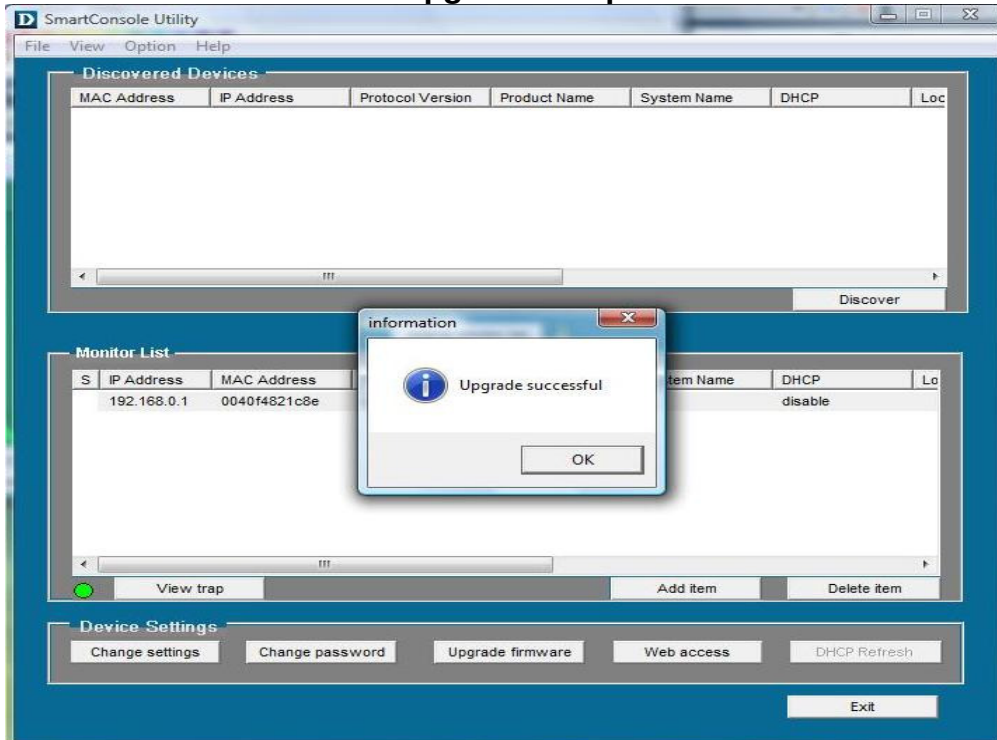
v. Click Browse button to search FWU.hex firmware file from user's local PC



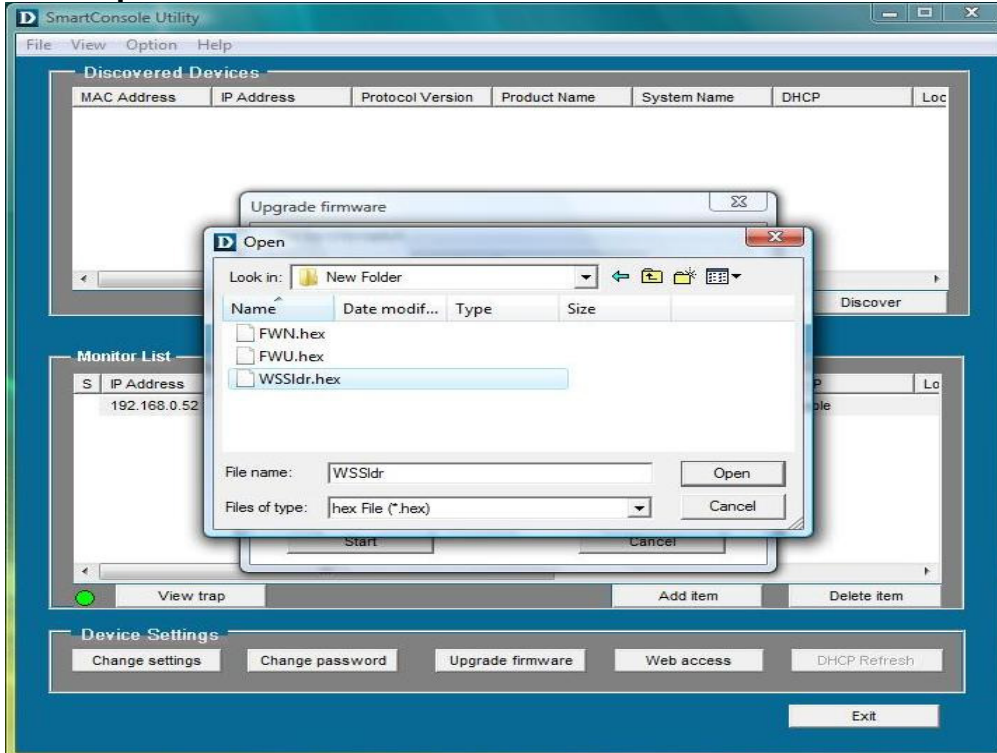
vi. Enter password and click start button to start firmware upgrade



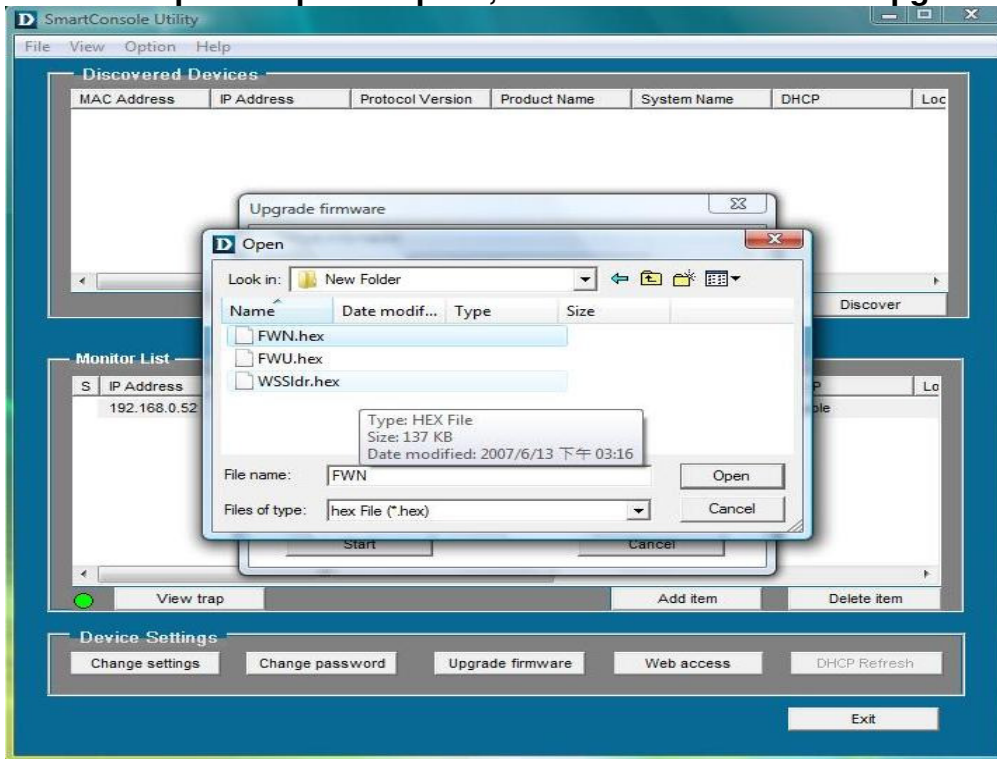
vii. Wait for firmware upgrade complete



viii. Repeat step.i ~ step.vii, but choose WSSldr.hex to upgrade in step.v

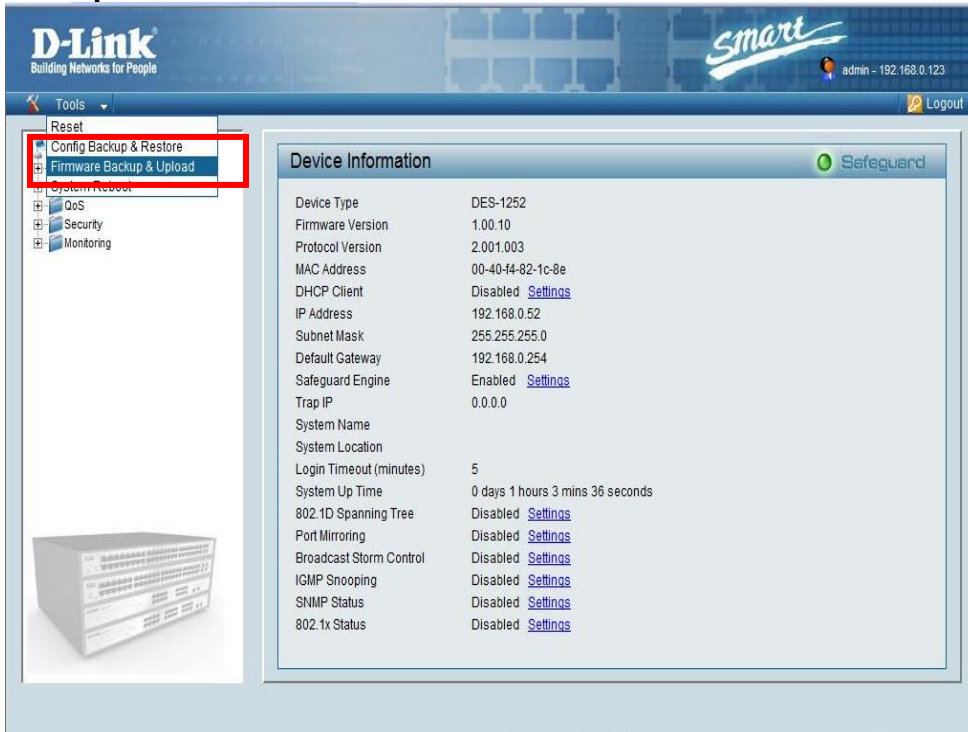


ix. Repeat step.i ~ step.vii , but choose FWN.hex to upgrade in step.v

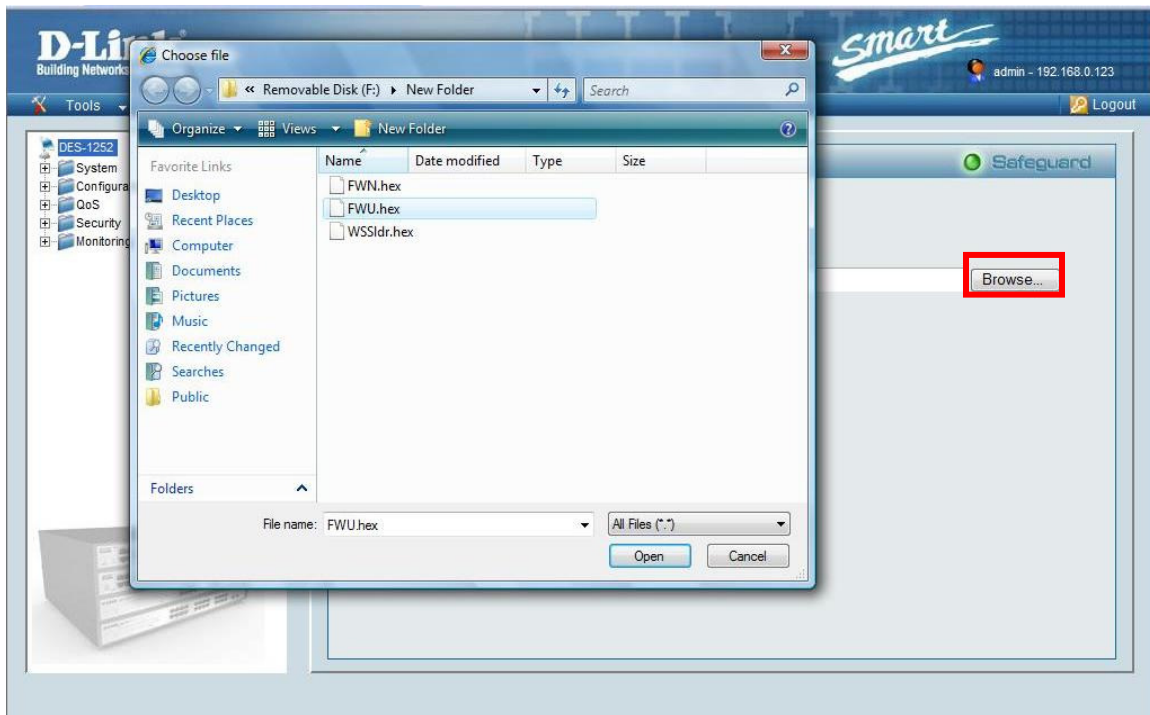


2. Upgrade firmware through Web GUI (Please refer to below step. i-vi)

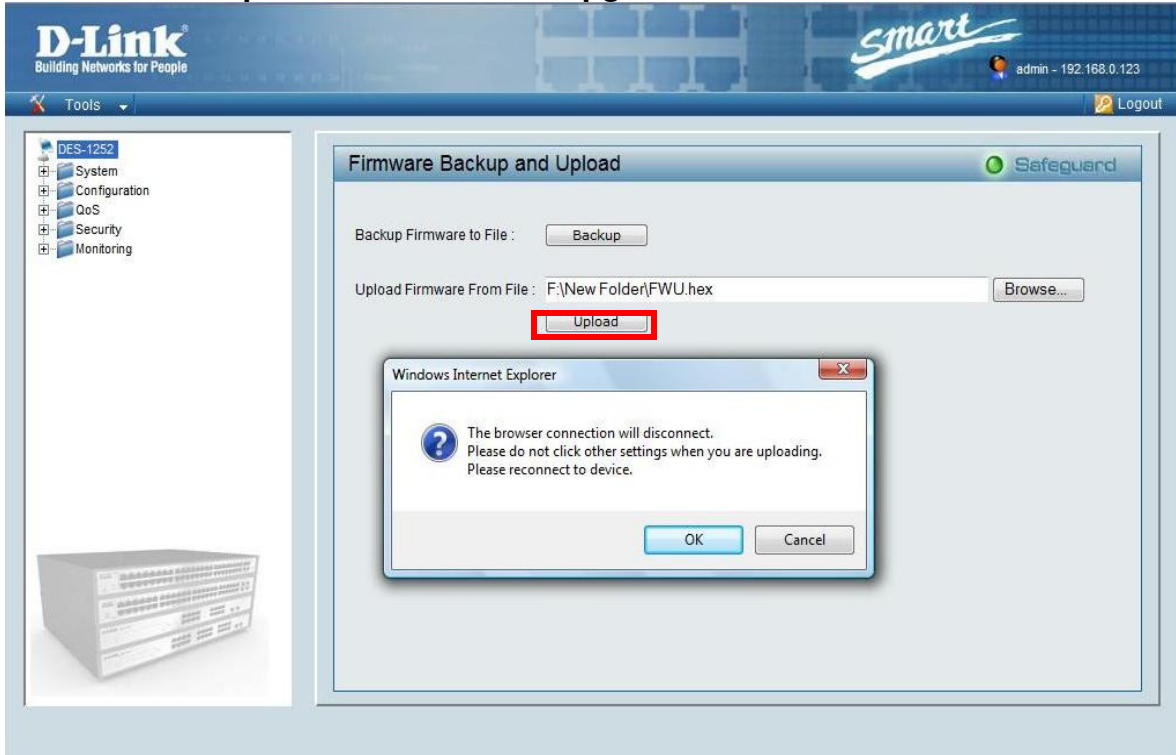
i. Open web GUI , clicking tool and choosing Firmware Backup & Upload



ii. Click browse button and choose FWU.hex firmware file from local user's PC

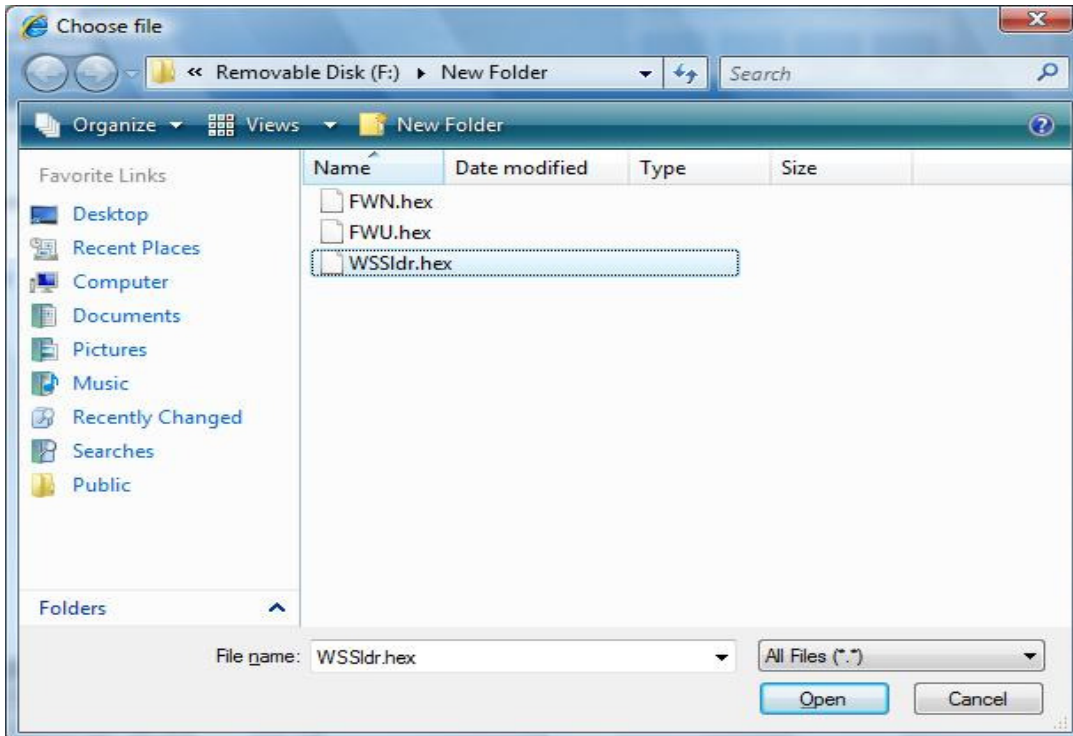


iii. Click Upload button to start upgrade firmware



iv. Wait for firmware upgrade complete then restart Web GUI

v. Repeat step.i ~ step.iv , but choose WSSldr.hex in step.ii



vi. Repeat step.i ~ step.iv , but choose FWN.hex in step.ii

