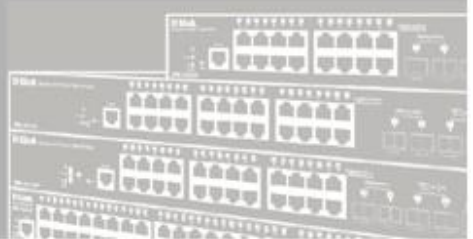


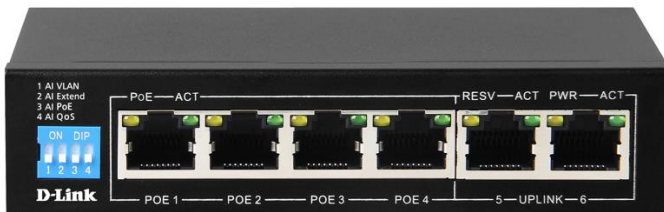
# Getting Started Guide For D-LINK Unmanaged PoE switch



## PRODUCT QUICK INSTALLATION GUIDE

**DES-F1006P-E**

**6-Port Fast Ethernet 250m Long Reach PoE+ Switch**



## 1.1 Package Contents

The package contains the following items:

- PoE Switch
- External Power Adapter
- Power Cord
- Quick Installation Guide

## 1.2 Safety Instructions

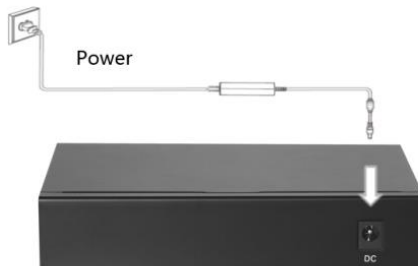


Use the following safety guidelines to ensure your own personal safety and to help protect your equipment from potential damage.

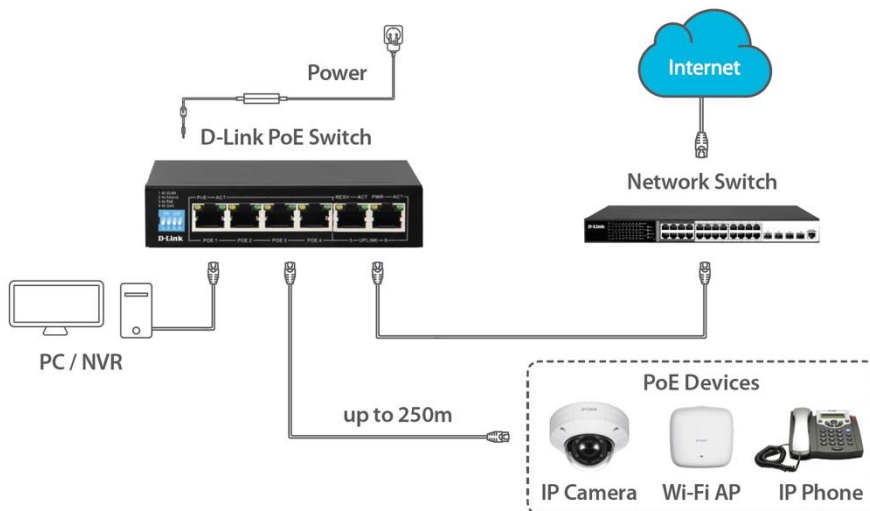
- The power adapter should be disconnected from the mains during the installation process;
- Wear a grounded anti-static wrist band to avoid the build-up of static electricity;
- The switch is designed to operate only when it is powered by the supplied power adapter. Make sure that the power adapter voltage matches the voltage indicated in the switch specifications.
- Observe extension cable and power strip ratings. Make sure that the total ampere rating of all products plugged into the extension cable or power strip does not exceed 80 percent of the ampere ratings limit for the extension cable or power strip;  
To avoid the risk of electric shock, do not open the switch or the power adapter housing. Do not modify power cables or plugs.

## 1.3 Connecting Power

Connect the External power adapter to the PoE switch DC Power Input.



## 1.4 Product Connection Diagram



## 1.5 Product Ports Description

Port	Description
PoE 1-4	PoE Ports: Support IEEE802.3af/at standard Power over Ethernet, used to connect PD devices.
Uplink 5-6	Non-PoE ports: Used to connect NVR, PC, Aggregation Switch etc.
DC Power Input	Power adapter connector (supports 48-56V). Please use the adapter supplied with the switch.

## 1.6 Product Specifications

Switch Modes	Extend: Supports long reach PoE delivery, up to 250m. (Cat 5 or better cabling is recommended)
	VLAN: Isolates ports from each other. Adds security and improves network performance by constraining broadcast traffic.
	QOS: Introduces application prioritisation. Traffic with higher priority (e.g. Voice over IP) will be forwarded ahead of the queue.
	PoE: Automatically restarts a remote device by disabling and re-enabling PoE on the port if it detects the remote device has locked up (no incoming traffic).
Network Ports	4 x 10/100Mbps PoE RJ45 ports (Port 1 – Port 4)
	2 x 10/100Mbps RJ45 Uplink ports (Port 5 – Port 6)
Transfer Rate	100Mbps full Duplex, 10 or 100Mbps Half Duplex
Network Protocol Standards	IEEE 802.3i, IEEE 802.3u, IEEE 802.3x, IEEE 802.3af, IEEE 802.3at
Performance	Bandwidth: 1.2Gbps (non-blocking)
	Network delay (100 to 100Mbps): maximum 20 $\mu$ s (using 64 byte packet)
	Frame filtering and transmission rate: 10M port maximum 14,800pps 100M port maximum 148,800pps
LED indicators	Power
	RESV
	LINK/ACT
PoE pins	1, 2 (+), 3, 6 (-)
Power	Max power for single port 30W
	Total PoE budget: 60W
Dimensions	Size (L x W x H): 125mm x 75mm x 27mm
	Weight: 0.5kg
Environmental	Operating Temperature: 0° - 40°C
	Operating Humidity: 10% - 90%, Non-condensing
Safety	CE/ROHS/FCC