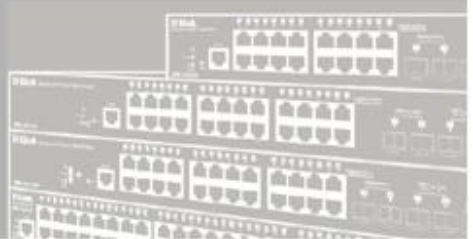




# Getting Started Guide For D-LINK Unmanaged PoE switch



## PRODUCT QUICK INSTALLATION GUIDE

**DES-F1018P-E**

**18-Port 250m Long Reach PoE Switch with  
16 Fast Ethernet PoE+ Ports and  
2 Gigabit Uplink Ports with 1 Combo SFP/RJ45 Port**



## 1.1 Package Contents

The package contains the following items:

- PoE Switch
- Power Cord
- 19" Rack Mounting Kit
- Quick Installation Guide

## 1.2 Safety Instructions



Use the following safety guidelines to ensure your own personal safety and to help protect your equipment from potential damage.

- The power cable should be disconnected from the mains during the installation process;
- Wear a grounded anti-static wrist band to avoid the build-up of static electricity;
- Power the product only from the type of external power source indicated on the electrical ratings label.
- Observe extension cable and power strip ratings. Make sure that the total ampere rating of all products plugged into the extension cable or power strip does not exceed 80 percent of the ampere ratings limit for the extension cable or power strip; To avoid the risk of electric shock, do not open the switch housing.
- Do not use damaged power cords. Do not modify power cables or plugs.

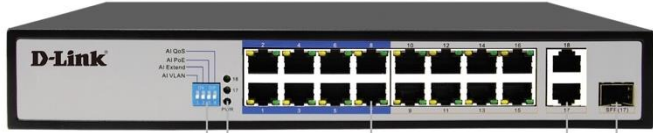
## 1.3 Connecting Power

Connect one end of the power cord to the rear of the switch, and the other end to the mains power outlet.

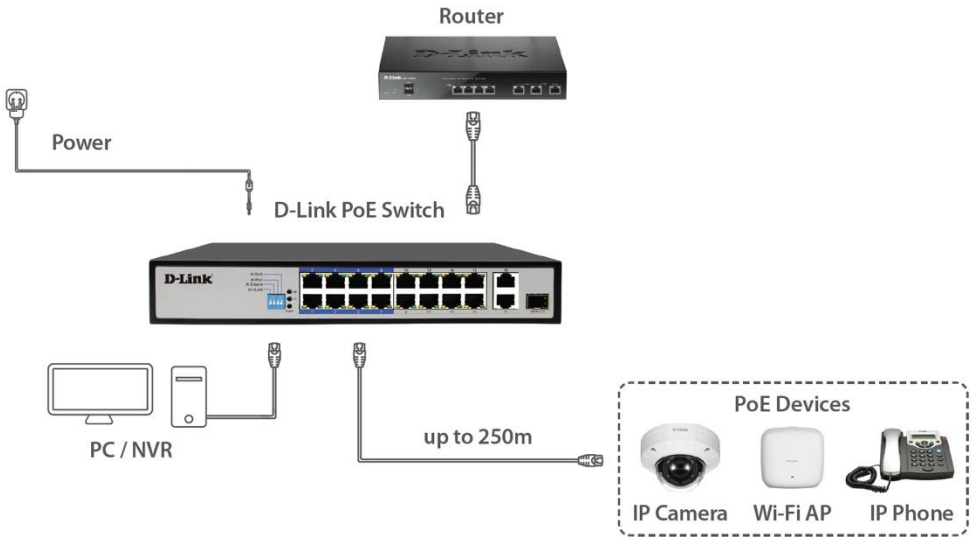


# 1.4 Product Connection Diagram

## FRONT PANEL



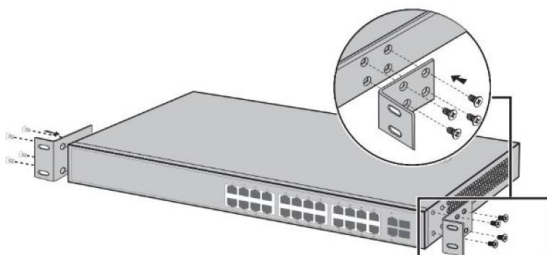
- 1. Working mode key
- 2. LEDs
- 3. 16 10/100Mbps RJ45 Ports
- 4. 2 10/100/1000Mbps RJ45 Ports
- 5. 1 SFP (Combo) Port



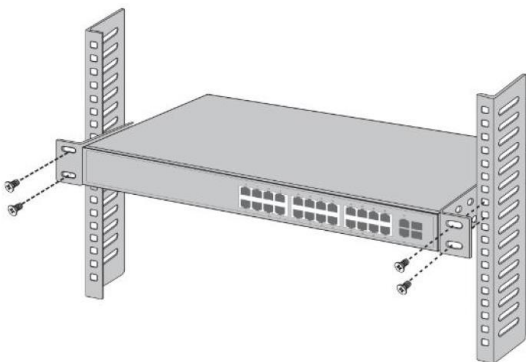
## 1.5 Product Installation

The DES-F1018P-E switch can be installed on a desktop, shelf or mounted in a standard 19-inch rack.

To install the switch in a rack, attach the supplied mounting brackets to the side of the switch and fasten the brackets to the sides of the switch using the screws from the switch mounting kit.



Align the brackets and rack holes. Fasten each bracket to the rack.



## 1.6 Product Ports Description

Port	Description
PoE 1-16	PoE Port: Support IEEE802.3af/at standard Power over Ethernet, used to connect PD devices; Ports 1 – 8 PoE support cable lengths up to 250m @ 10Mbps ( "Extend" mode enabled); Ports 9 – 16 PoE, support cable lengths up to 100m.
Uplink	Non-PoE port: used to connect NVR, PC, Aggregation Switch etc.
AC Power Input	Connect power cord to the mains power outlet.

## 1.7 Product Specifications

Switch Modes	Extend: Supports long reach PoE delivery, up to 250m. (Cat 5 or better cabling is recommended)
	VLAN: Isolates ports from each other. Adds security and improves network performance by constraining broadcast traffic.
	QOS: Introduces application prioritisation. Traffic with higher priority (e.g. Voice over IP) will be forwarded ahead of the queue.
	PoE: Automatically restarts a remote device by disabling and re-enabling PoE on the port if it detects the remote device has locked up (no incoming traffic).
Network Ports	16 x 10/100Mbps PoE RJ45 ports (Port 1 – Port 16)
	2 x Gigabit RJ45 Uplink ports with SFP (Combo) port
Transfer Rate	100Mbps full Duplex, 10 or 100Mbps Half Duplex (Downlink)
Network Protocol Standards	IEEE 802.3i, IEEE 802.3u, IEEE 802.3x, IEEE 802.3af, IEEE 802.3at
Performance	Bandwidth: 5.2Gbps (non-blocking)
	Network delay (100 to 100Mbps): maximum 20 $\mu$ s (using 64 byte packet)
	Frame filtering and transmission rate: 10M port maximum 14,800pps 100M port maximum 148,800pps
LED indicator	Power
	RESV
	LINK/ACT
PoE pins	1, 2 (+), 3, 6 (-)
Power	Max power for single port 30W
	Total PoE budget: 150W
Dimensions	Size (L x W x H): 285mm x 180mm x 44mm
	Weight: 2.3kg
Environmental	Operating Temperature: 0° - 40°C
	Operating Humidity: 10% - 90%, Non-condensing
Safety	CE/ROHS/FCC