



**Firmware Version:** 4.10.B022  
**Boot Code Version:** 1.00.017  
**MIB Version:** 4.10.B003  
**D-View Module Version:** 4.0.0.5  
**Published:** Sep. 23, 2016

These release notes include important information about D-Link switch firmware revisions. Please verify that these release notes are correct for your switch:

- If you are installing a new switch, please check the hardware version on the device label; make sure that your switch meets the system requirement of this firmware version. Please refer to [Revision History and System Requirement](#) for detailed firmware and hardware matrix.
- If the switch is powered on, you can check the hardware version by typing "show switch" command via Telnet or by checking the device information page on the web graphic user interface.
- If you plan to upgrade to the new firmware release, please refer to the [Upgrade Instructions](#) for the correct firmware upgrade procedure.

For more detailed information regarding our switch products, please refer to [Related Documentation](#).

You can also download the switch firmware, D-View modules and technical documentation from <http://tsd.dlink.com.tw>.

### Content:

Upgrade Instructions:.....	4
Upgrade using CLI (via Telnet).....	4
Upgrade using Web-UI.....	5
Upgrade using D-Link Network Assistant.....	6
New Features:.....	9
Changes of MIB & D-View Module:.....	11
Changes of Command Line Interface: .....	14
Problem Fixed: .....	16
Known Issues: .....	20
Related Documentation: .....	25

Revision History and System Requirement:

Firmware Version	Date	Model	Hardware Version
Runtime: v4.10. B022 Boot: 1.00.017	23- Sep. -16	DGS-1210-10P	C1
Runtime: v4.10. B021 Boot: 1.00.017	29- Aug. -16	DGS-1210-10P	C1
Runtime: v4.10. B020 Boot: 1.00.017	15- Jun. -16	DGS-1210-10P	C1
Runtime: v4.10. B019 Boot: 1.00.017	13- Jun. -16	DGS-1210-10P	C1
Runtime: v4.10. B018 Boot: 1.00.017	27- May -16	DGS-1210-10P	C1
Runtime: v4.10. B017 Boot: 1.00.017	16- May -16	DGS-1210-10P	C1
Runtime: v4.10. B013 Boot: 1.00.016	15- Mar.-16	DGS-1210-10P	C1
Runtime: v4.10. B012 Boot: 1.00.016	03- Mar.-16	DGS-1210-10P	C1
Runtime: v4.10. B011 Boot: 1.00.016	22- Jan.-16	DGS-1210-10P	C1
Runtime: v4.10. B008 Boot: 1.00.016	07- Jan.-16	DGS-1210-10P	C1
Runtime: v4.10. B005 Boot: 1.00.016	23- Dec.-15	DGS-1210-10P	C1
Runtime: v4.10. 004 Boot: 1.00.016	11- Dec.-15	DGS-1210-10P	C1
Runtime: v4.00. B092 Boot: 1.00.016	03- Dec.-15	DGS-1210-10P	C1
Runtime: v4.00. B087 Boot: 1.00.016	23- Nov.-15	DGS-1210-10P	C1
Runtime: v4.00. B086 Boot: 1.00.016	20- Nov.-15	DGS-1210-10P	C1
Runtime: v4.00. B085 Boot: 1.00.016	03- Nov.-15	DGS-1210-10P	C1

Runtime: v4.00. B084 Boot: 1.00.016	16- Oct.-15	DGS-1210-10P	C1
Runtime: v4.00. B083 Boot: 1.00.016	14- Oct.-15	DGS-1210-10P	C1
Runtime: v4.00. B082 Boot: 1.00.016	30- Sep.-15	DGS-1210-10P	C1
Runtime: v4.00. B081 Boot: 1.00.016	18- Sep.-15	DGS-1210-10P	C1
Runtime: v4.00. B078 Boot: 1.00.016	03- Sep.-15	DGS-1210-10P	C1
Runtime: v4.00. B077 Boot: 1.00.016	27- Aug.-15	DGS-1210-10P	C1
Runtime: v4.00. B076 Boot: 1.00.016	19- Aug.-15	DGS-1210-10P	C1
Runtime: v4.00. B075 Boot: 1.00.016	17- Aug.-15	DGS-1210-10P	C1
Runtime: v4.00. B074 Boot: 1.00.016	03- Aug.-15	DGS-1210-10P	C1
Runtime: v4.00. B072 Boot: 1.00.016	12- May.-15	DGS-1210-10P	C1
Runtime: v4.00. J066B Boot: 1.00.016	20- Apr.-15	DGS-1210-10P	C1
Runtime: v4.00.064 Boot: 1.00.016	31- Jan.-15	DGS-1210-10P	C1
Runtime: v4.00.063 Boot: 1.00.016	29- Jan.-15	DGS-1210-10P	C1
Runtime: v4.00.060 Boot: 1.00.016	21- Jan.-15	DGS-1210-10P	C1
Runtime: v4.00.057 Boot: 1.00.016	27- Oct.-14	DGS-1210-10P	C1
Runtime: v4.00.055 Boot: 1.00.016	22- Oct.-14	DGS-1210-10P	C1

## Upgrade Instructions:

D-Link Smart Switches support firmware upgrade via TFTP server. You can download the firmware from D-Link web site <http://tsd.dlink.com.tw>, and copy the downloaded firmware to the TFTP server folder. Please make sure that the TFTP server is accessible from the switch via networks.

### Upgrade using CLI (via Telnet)

1. Make sure the network connection between the switch and PC is active.
2. Use software that supports telnet, for example, HyperTerminal or Telnet command in Microsoft Windows, to connect to the switch. If you are using Telnet command, type the command followed by the switch IP address, eg. *telnet 10.90.90.90*.
3. The logon prompt will appear.

The switch will prompt the user to enter his/her username and password. It should be noted that upon the initial connection, both the default user name and password are **admin**.

To upgrade the switch firmware, execute the following command:

Command	Function
download{firmware_fromTFTP tftp://ip-address/filename   cfg_fromTFTP tftp://ip-address/filename}	Download firmware file from the TFTP server to the switch.

When completing firmware upgrade, the following messages will pop up.

```
Device will reboot after firmware upgraded successfully
Image upgraded successfully
```

4. Execute the following command to check the firmware version and switch's information.

Command	Function
show switch	Display the information of current firmware and boot version.

### Example:

1. **DGS-1210-52MP:**

```
Command: download firmware_fromTFTP tftp://10.90.90.91
DGS-1210-52MP-C1-4-00-064.hex
Device will reboot after firmware upgraded successfully
Image upgraded successfully
```

2. **DGS-1210-52MP:**

```
Command: show switch
DGS-1210-52MP> show switch
System name           :
System Contact       :
System Location      :
System up time        : 0 days, 0 hrs, 2 min, 31 secs
System Time           : 01/01/2014 00:02:19
System hardware version : C1
System firmware version : 4.00.064
System boot version    : 1.00.016
System serial number   : QBDES12105200
```

MAC Address

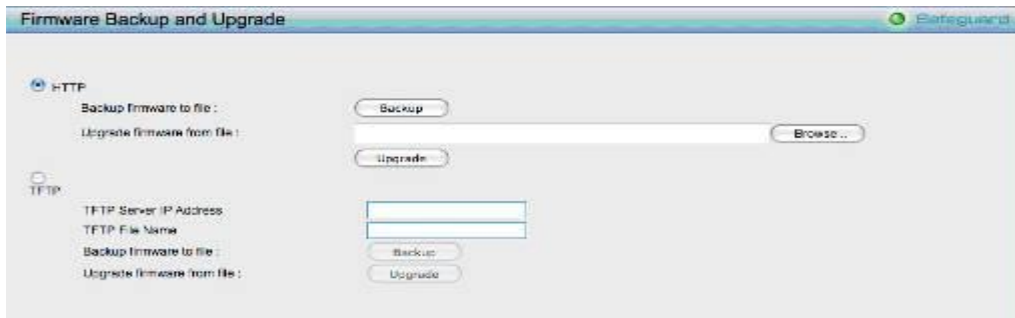
: 9C-D6-43-AA-58-77

### Upgrade using Web-UI

1. Connect a workstation installed with java SE runtime environment to any switch port of the device.
2. Open the web browser from the workstation and enter the IP address of the switch. The switch's default IP address is 10.90.90.90.
3. Enter administrator's password when prompted. The password is **admin** by default.
4. To update switch's firmware or configuration file, select **Tools > Firmware Backup & Upgrade** from the banner.



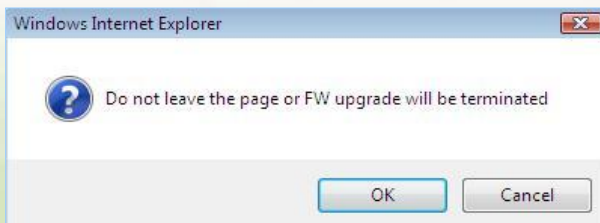
5. Two methods can be selected : **HTTP** or **TFTP**



6. Select **HTTP** to upgrade the firmware to or from your local drive of PC.
  - a. Click **Browse** to browse your inventories for a saved firmware file
  - b. Click **Upgrade** after selecting the firmware file you want to restore
  - c. Click **OK** to continue with firmware upgrade



- d. Click **OK** to continue with firmware upgrade



- e. Wait until the "Firmware Upgrade Successful" message pops up and login again after device boots up.



7. Select **TFTP** to upgrade the firmware to or from a remote TFTP server.
  - a. Enter the name of the firmware file located on the TFTP server
  - b. Click **Upgrade** after selecting the firmware file you want to restore
  - c. Click **OK** to continue with firmware upgrade

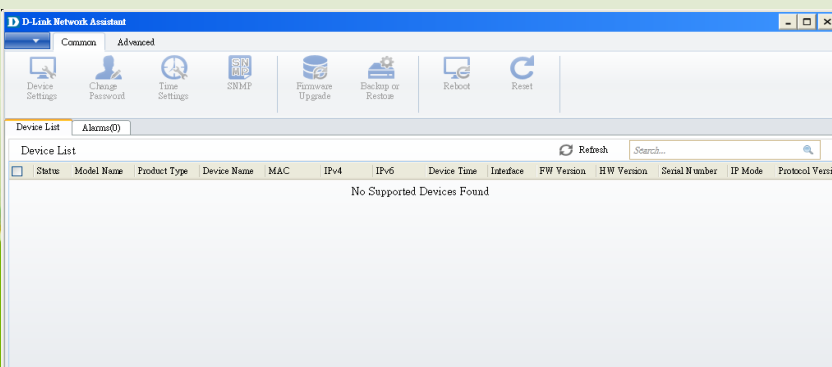


- d. Wait until the firmware upgrade ends and login again after device boots up.

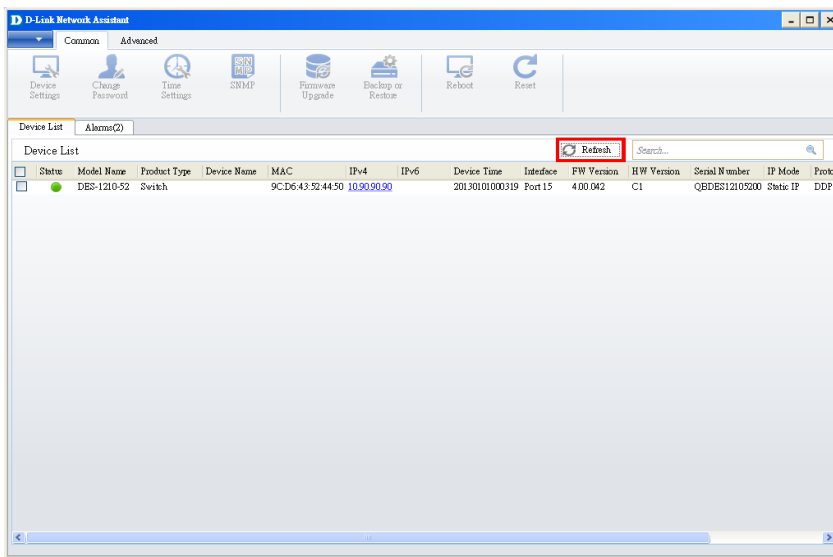


### **Upgrade using D-Link Network Assistant**

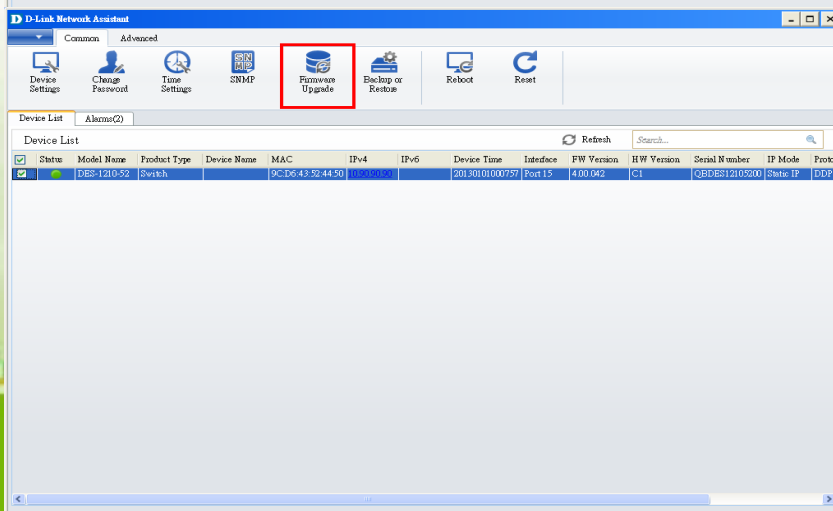
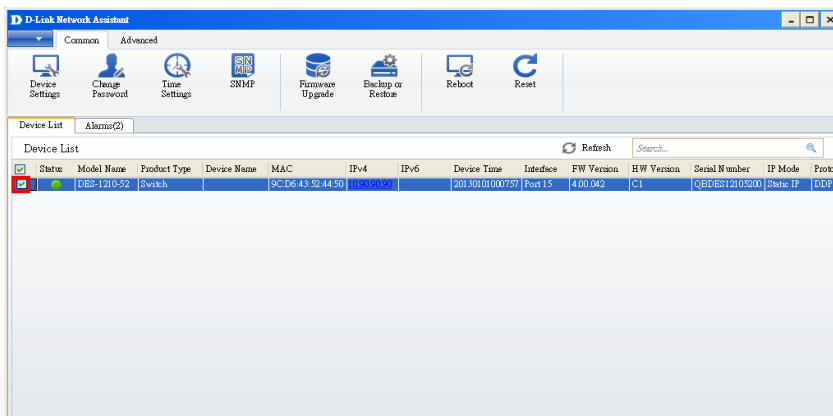
1. Connect a workstation installed with java SE runtime environment to any switch port of the device
2. Execute D-Link Network Assistant



### 3. Click Refresh button to search target switch

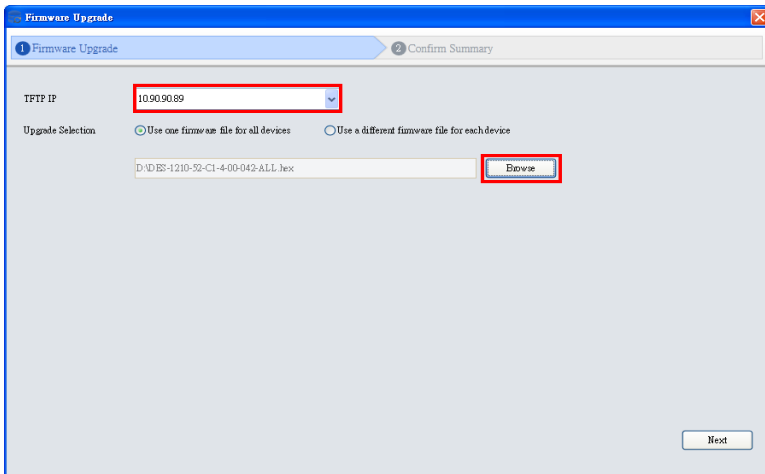


### 4. Single click the icon of the column to choose the target switch

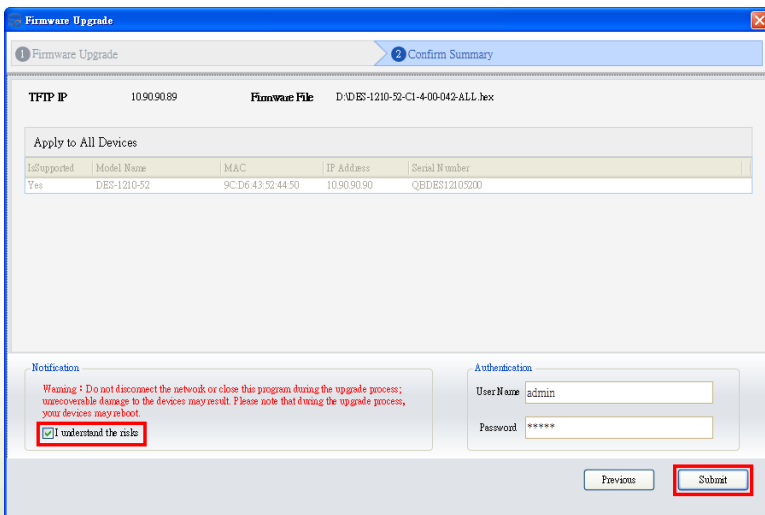


### 5. Click Firmware Upgrade button

6. Select PC IP address is used to connect the target switch, then click Browse button and select the firmware file (Model name\_HW ver.\_FW ver. .hex) on your local hard drive.

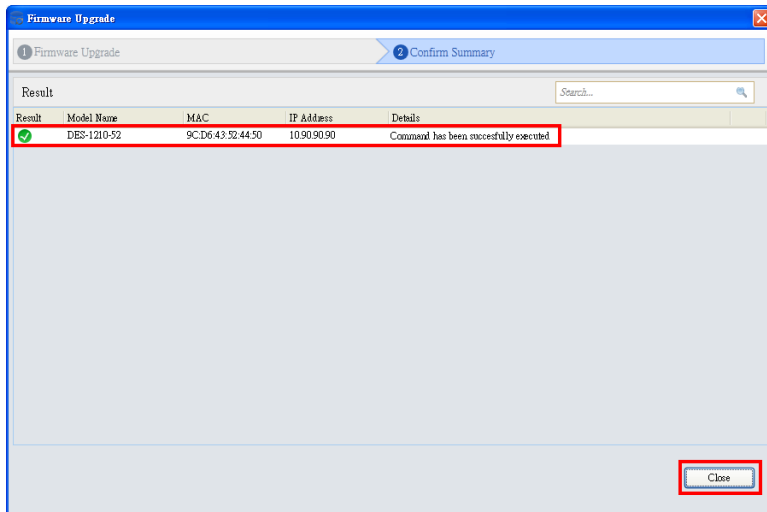


7. Click the checkbox and click "Submit" button to start firmware upgrade.



8. Once the message changed to success, click "Close" button to complete and exit the firmware upgrade





### New Features:

Firmware Version	New Features
V4.10. B022	N/A
V4.10. B021	N/A
V4.10. B020	N/A
V4.10. B019	N/A
V4.10. B018	1. Add Capability Advertised feature.
V4.10. B017	N/A
V4.10. B013	N/A
V4.10. B012	N/A
V4.10. B011	N/A
V4.10. B008	N/A
V4.10. B005	N/A
V4.10. 004	1. Change default of EEE to disable. 2. Port Auto Downgrade (DGS-1210 series only)

	3.Legacy PD (PoE series only)
V4.00. B092	N/A
V4.00. B087	N/A
V4.00. B086	N/A
V4.00. B085	N/A
V4.00. B084	N/A
V4.00. B083	N/A
V4.00. B082	N/A
V4.00. B081	N/A
V4.00. B078	N/A
V4.00. B077	N/A
V4.00. B076	N/A
V4.00. B075	N/A
V4.00. B074	N/A
V4.00. B072	N/A
V4.00. J066B	N/A
V4.00.064	N/A
V4.00.063	N/A
V4.00.060	N/A
V4.00.057	N/A
V4.00.055	First Release

## Changes of MIB & D-View Module:

The new features of MIB file are also included in the corresponding D-View module. Please download the D-View module from <http://tsd.dlink.com.tw>. For detailed changes of MIB content, please refer to the modification history in each MIB file.

Firmware Version	MIB File	New Features
V4.10. B022	DGS-1210-10P-CX-4-10-B003.mib	N/A
V4.10. B021	DGS-1210-10P-CX-4-10-B003.mib	N/A
V4.10. B020	DGS-1210-10P-CX-4-10-B003.mib	N/A
V4.10. B019	DGS-1210-10P-CX-4-10-B003.mib	N/A
V4.10. B018	DGS-1210-10P-CX-4-10-B003.mib	1. Add Capability Advertised object.
V4.10. B017	DGS-1210-10P-CX-4-10-002.mib	N/A
V4.10. B013	DGS-1210-10P-CX-4-10-002.mib	N/A
V4.10. B012	DGS-1210-10P-CX-4-10-002.mib	N/A
V4.10. B011	DGS-1210-10P-CX-4-10-002.mib	N/A
V4.10. B008	DGS-1210-10P-CX-4-10-002.mib	N/A
V4.10. B005	DGS-1210-10P-CX-4-10-002.mib	N/A
V4.10. 004	DGS-1210-10P-CX-4-10-002.mib	1. Port Auto Downgrade 2. Legacy PD
V4.00. B092	DGS-1210-10P-CX-4-00-B017.mib	N/A
V4.00. B087	DGS-1210-10P-CX-4-00-B017.mib	N/A
V4.00. B086	DGS-1210-10P-CX-4-00-B017.mib	N/A
V4.00. B085	DGS-1210-10P-CX-4-00-B017.mib	N/A
V4.00. B084	DGS-1210-10P-CX-4-00-B017.mib	N/A

V4.00. B083	DGS-1210-10P-CX-4-00-B017.mib	N/A
V4.00. B082	DGS-1210-10P-CX-4-00-B017.mib	Add DHCPRetryTimes object.
V4.00. B081	DGS-1210-10P-CX-4-00-B016.mib	N/A
V4.00. B078	DGS-1210-10P-CX-4-00-015.mib	N/A
V4.00. B077	DGS-1210-10P-CX-4-00-015.mib	N/A
V4.00. B076	DGS-1210-10P-CX-4-00-015.mib	N/A
V4.00. B075	DGS-1210-10P-CX-4-00-015.mib	N/A
V4.00. B074	DGS-1210-10P-CX-4-00-015.mib	N/A
V4.00. B072	DGS-1210-10P-CX-4-00-015.mib	N/A
V4.00. J066B	DGS-1210-10P-CX-4-00-015.mib	N/A
V4.00.064	DGS-1210-10P-CX-4-00-015.mib	N/A
V4.00.063	DGS-1210-10P-CX-4-00-015.mib	N/A
V4.00.060	DGS-1210-10P-CX-4-00-015.mib	N/A
V4.00.057	DGS-1210-10P-CX-4-00-015.mib	N/A
V4.00.055	DGS-1210-10P-CX-4-00-015.mib	First Release

Firmware Version	D-View Module File	New Features
V4.10. B022	DView_DGS-1210-10PC1_4.0.0.5_setup.exe	N/A
V4.10. B021	DView_DGS-1210-10PC1_4.0.0.5_setup.exe	N/A
V4.10. B020	DView_DGS-1210-10PC1_4.0.0.5_setup.exe	N/A
V4.10. B019	DView_DGS-1210-10PC1_4.0.0.5_setup.exe	N/A

V4.10. B018	DView_DGS-1210-10PC1_4.0.0.5_setup.exe	N/A
V4.10. B017	DView_DGS-1210-10PC1_4.0.0.5_setup.exe	N/A
V4.10. B013	DView_DGS-1210-10PC1_4.0.0.5_setup.exe	N/A
V4.10. B012	DView_DGS-1210-10PC1_4.0.0.5_setup.exe	N/A
V4.10. B011	DView_DGS-1210-10PC1_4.0.0.5_setup.exe	N/A
V4.10. B008	DView_DGS-1210-10PC1_4.0.0.5_setup.exe	N/A
V4.10. B005	DView_DGS-1210-10PC1_4.0.0.5_setup.exe	N/A
V4.10. 004	DView_DGS-1210-10PC1_4.0.0.5_setup.exe	Update the Digital Signature.
V4.00. B092	DView_DGS-1210-10PC1_4.0.0.2.exe	N/A
V4.00. B087	DView_DGS-1210-10PC1_4.0.0.2.exe	N/A
V4.00. B086	DView_DGS-1210-10PC1_4.0.0.2.exe	N/A
V4.00. B085	DView_DGS-1210-10PC1_4.0.0.2.exe	N/A
V4.00. B084	DView_DGS-1210-10PC1_4.0.0.2.exe	N/A
V4.00. B083	DView_DGS-1210-10PC1_4.0.0.2.exe	N/A
V4.00. B082	DView_DGS-1210-10PC1_4.0.0.2.exe	N/A
V4.00. B081	DView_DGS-1210-10PC1_4.0.0.2.exe	N/A
V4.00. B078	DView_DGS-1210-10PC1_4.0.0.2.exe	N/A

V4.00. B077	DView_DGS-1210-10PC1_4.0.0.2.exe	N/A
V4.00. B076	DView_DGS-1210-10PC1_4.0.0.2.exe	N/A
V4.00. B075	DView_DGS-1210-10PC1_4.0.0.2.exe	N/A
V4.00. B074	DView_DGS-1210-10PC1_4.0.0.2.exe	N/A
V4.00. B072	DView_DGS-1210-10PC1_4.0.0.2.exe	N/A
V4.00. J066B	DView_DGS-1210-10PC1_4.0.0.2.exe	N/A
V4.00.064	DView_DGS-1210-10PC1_4.0.0.2.exe	N/A
V4.00.063	DView_DGS-1210-10PC1_4.0.0.2.exe	N/A
V4.00.060	DView_DGS-1210-10PC1_4.0.0.2.exe	N/A
V4.00.057	DView_DGS-1210-10PC1_4.0.0.2.exe	N/A
V4.00.055	DView_DGS-1210-10PC1_4.0.0.2.exe	First Release

## Changes of Command Line Interface:

The section below only shows command line changes that may bring backward compatibility issues with configuration settings for previous version of firmware. Any new feature commands that do not have backward compatibility issues are not included in the below section.

Firmware Version	Changes
V4.10. B022	N/A
V4.10. B021	N/A
V4.10. B020	N/A

V4.10. B019	N/A
V4.10. B018	N/A
V4.10. B017	N/A
V4.10. B013	N/A
V4.10. B012	N/A
V4.10. B011	N/A
V4.10. B008	N/A
V4.10. B005	N/A
V4.10. 004	N/A
V4.00. B092	N/A
V4.00. B087	N/A
V4.00. B086	N/A
V4.00. B085	1.Change default of EEE to disable.
V4.00. B084	N/A
V4.00. B083	N/A
V4.00. B082	N/A
V4.00. B081	N/A
V4.00. B078	1.LLDP/LLDP-MED default disabled
V4.00. B077	N/A
V4.00. B076	N/A
V4.00. B075	N/A

V4.00. B074	N/A
V4.00. B072	N/A
V4.00. J066B	N/A
V4.00.064	N/A
V4.00.063	N/A
V4.00.060	N/A
V4.00.057	N/A
V4.00.055	First Release

## Problem Fixed:

---

Firmware Version	Problems Fixed
V4.10. B022	<ol style="list-style-type: none"> <li>1. DGS-1210 rev.C1 DoS prevention blocks NTP [DRU20160823000001-Russia]</li> <li>2. PoE port state setting is not kept after rebooting the switch[DI20160907000002-Japan]</li> </ol>
V4.10. B021	<ol style="list-style-type: none"> <li>1. SNMP Community Name needs to support special characters “! ”.</li> <li>2. DGS-1210: Manual / Sync Time Settings with TimeZone settings [DUSA20160730000002-USA].</li> <li>3. DGS-1210-52P issue with link aggregation.[DRU20160811000004-Russia]</li> <li>4. DGS-1210 rev.C1 can't configure DOS attack prevention [DRU20160819000001-Russia].</li> </ol>
V4.10. B020	<ol style="list-style-type: none"> <li>1. Fix Capability Advertised web issue.</li> </ol>
V4.10. B019	<ol style="list-style-type: none"> <li>1. Fix Capability Advertised web issue.</li> <li>2. The same poe issue with case: DGC20160406000001[DGC20160523000002-Taiwan].</li> </ol>
V4.10. B018	<ol style="list-style-type: none"> <li>1. VLAN ID can't save [DEUR20160510000007-Eastern Europe].</li> </ol>
V4.10. B017	<ol style="list-style-type: none"> <li>1. PORT DESCRIPTION IS NOT</li> </ol>



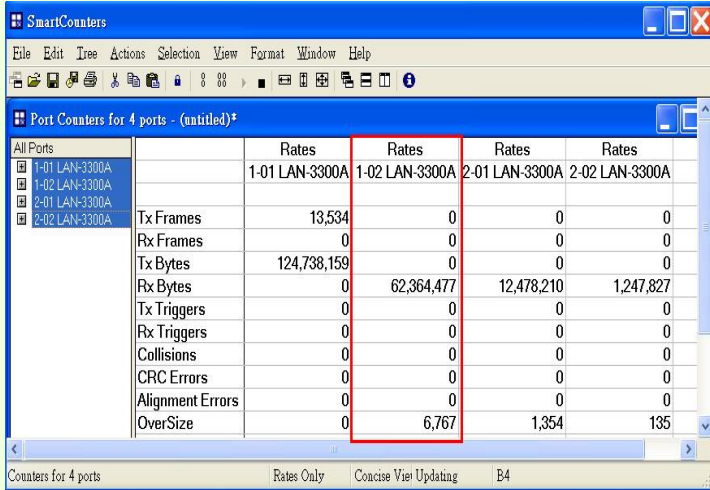
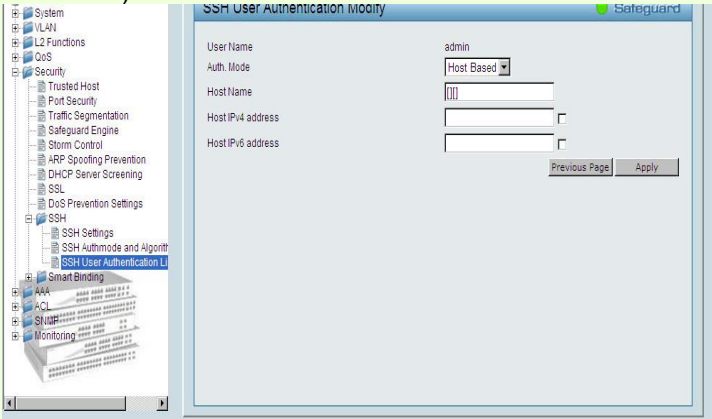
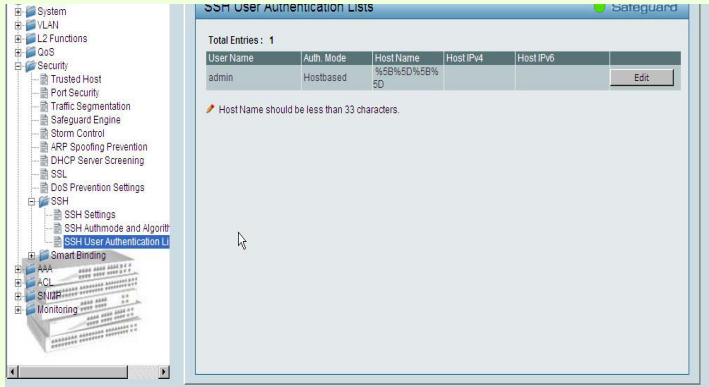
	PROPAGATED[DEUR20160420000006-Eastern Europe]
V4.10. B013	1. DGS-1210-52 issue with CARP entries [DRU20160216000002-Russia].
V4.10. B012	<ol style="list-style-type: none"> <li>1. Fix Switch Web Server issue, WebUI blocked by Kaspersky antivirus [DRU20160125000007-Russia].</li> <li>2. DGS-1210-28 DNA and host IP address [DEUR20160204000002-Central Europe].</li> </ol>
V4.10. B011	<ol style="list-style-type: none"> <li>1. Remove web login timeout to improve user-experience.</li> <li>2. Fix browser auto save website account and password incorrect issue.</li> </ol>
V4.10. B008	1. Fix change password with special characters, cannot login issue.
V4.10. B005	<ol style="list-style-type: none"> <li>1. DGS-1210 DHCP Enhancement for Whitesky.</li> <li>2. DGS-1210-28 save configuration failed ! [DGC20151217000003-China]</li> <li>3. Increase security with web login.</li> </ol>
V4.10. 004	1. For formal release
V4.00. B092	1. [DEUR20151120000003-Eastern Europe]Test Case that Port mirror does not mirror outgoing traffic.
V4.00. B087	<ol style="list-style-type: none"> <li>1. Make sure the issue of user can download configuration file with any authentication will be fixed.</li> <li>2. Configuration backup button not work.</li> </ol>
V4.00. B086	<p>Fix Security Incident Report issue, that include</p> <ol style="list-style-type: none"> <li>1. Change the password field in the html file to replace with “check” or other suitable field.</li> <li>2. To remove the concern, we suggest to run hash on the client side, too. In other words, please change the java script to make sure client will send out new password which is been hashed and send to switch. Then switch need to run hash with its original password and compare these two string are the same.</li> <li>3. Gamebit value should be hashed. It will help to make sure to randomize gamebit value from user point of view.</li> <li>4. Make sure the issue of user can download configuration file with any authentication will be fixed.</li> </ol> <p>Fix [DEUR20150529000006]DGS-1210-28 – VoiceVLAN (DGS-1210 series only)</p>
V4.00. B085	1. Fix Samsung SENS RC420 cannot ping correctly when EEE enabled. (D-track

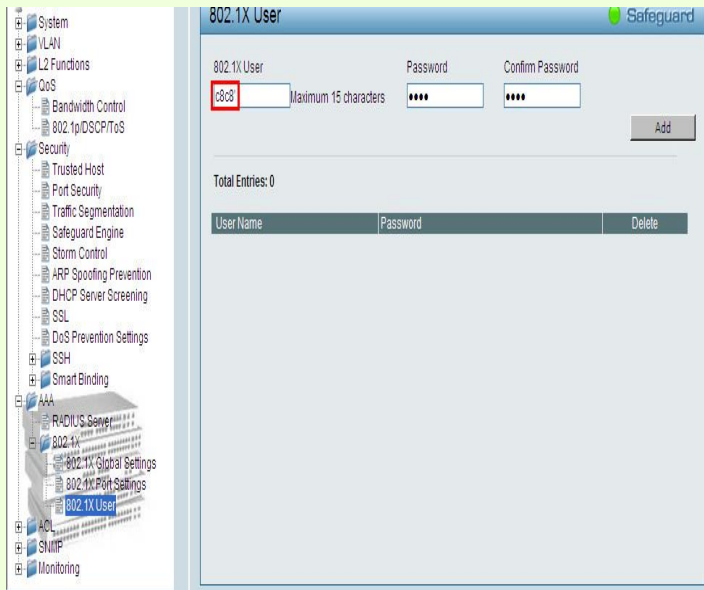
	<p>DI20151015000004-Korea).</p> <ol style="list-style-type: none"> <li>2. Change external PHY as master preferred mode (DEUR20151012000003).</li> <li>3. Enable IEEE802.3az EEE Fast Ethernet connection failed.(DGC20151019000003-China).</li> </ol>
V4.00. B084	<ol style="list-style-type: none"> <li>1. Change default of EEE to disable.</li> </ol>
V4.00. B083	<ol style="list-style-type: none"> <li>1. DGS-1210 WebSmart wrong stp cost on lacp links [DRU20150907000006-Russia].</li> <li>2. DGS-1210 rev.B1 reboots[DRU20150907000005-Russia].</li> </ol>
V4.00. B082	<ol style="list-style-type: none"> <li>1. HQ20150921000011: ACL question[DGC20150921000002-Taiwan]</li> <li>2. Add DHCP retry time for [DUSA20150721000002]DGS-1210 DHCP client mode stops similar to case DUSA20131128000001</li> <li>3. HQ20150820000009: LACP Issue with Windows Server 2012R2[DEUR20150819000004-UKI]</li> </ol>
V4.00. B081	<ol style="list-style-type: none"> <li>1. [DRU20150729000002]DES-1210 dos prevention blocks ip phones traffic.</li> <li>2. [DRU20150903000003-Russia]DES-1210-28P issue with adding port to vlan.</li> <li>3. [DUSA20150820000002]DHCP for management on DGS-1210-28 C1 for VLAN 1 affecting VLAN 2.</li> </ol>
V4.00. B078	<ol style="list-style-type: none"> <li>1. Power budget assignment per port with LLDP[DI20150602000006-Japan</li> </ol>
V4.00. B077	<ol style="list-style-type: none"> <li>1. Fix issue: DGS-1210 DHCP client mode stops similar to case DUSA20131128000001[DUSA20150721000002-USA].</li> <li>2. Fix issue:[HQ20150707000001]DGS-1210-28 Lease renewal DNS and nslookup issue - DHCP option 12[DUSA20150707000001-USA]</li> <li>3. Fix the filter unregistered multicast feature doesn't work issue.</li> </ol>
V4.00. B076	<ol style="list-style-type: none"> <li>1. Fix [HQ20150814000010]DGS-1210-10P the Admin password can be changed by everybody without knowing the Admin password.[DEUR20150813000005-Central Europe].</li> </ol>
V4.00. B075	<ol style="list-style-type: none"> <li>1. PoE AT port add 2-Event Physical Layer classification in default.</li> </ol>
V4.00. B074	<ol style="list-style-type: none"> <li>1. OpenSSL issue: CVE-2015-1789 (OpenSSL before 0.9.8zg) <a href="https://web.nvd.nist.gov/view/vuln/detail?vulnId=CVE-2015-1789">https://web.nvd.nist.gov/view/vuln/detail?vulnId=CVE-2015-1789</a></li> <li>2. [DGC20150626000004-Taiwan]MAC ACL function problem.</li> <li>3. [DEUR20150722000006-Central Europe]DGS-1210 - VLAN LBD issue.</li> </ol>

V4.00. B072	[DEUR20150420000001-Eastern Europe]IGMP Leave is sent with wrong Source IP.
V4.00. J066B	DGS-1210 C1 Factory setting for EEE function[DI20150226000004]
V4.00.064	Fix IPv6 TFTP Fw backup fail.
V4.00.063	Fix config backup page at DE language issue.
V4.00.060	Fix wrong DE word for Multilanguage.
V4.00.057	Change default LLDP global settings as enabled.
V4.00.055	First Release

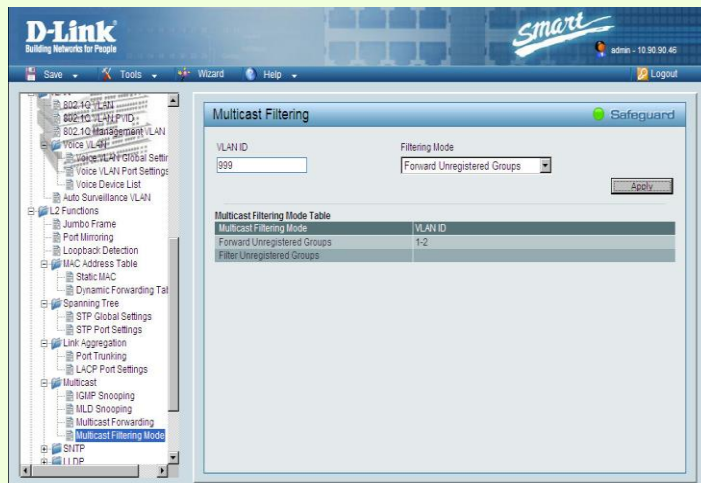
\* D-Link tracking number is enclosed in ()

Known Issues:

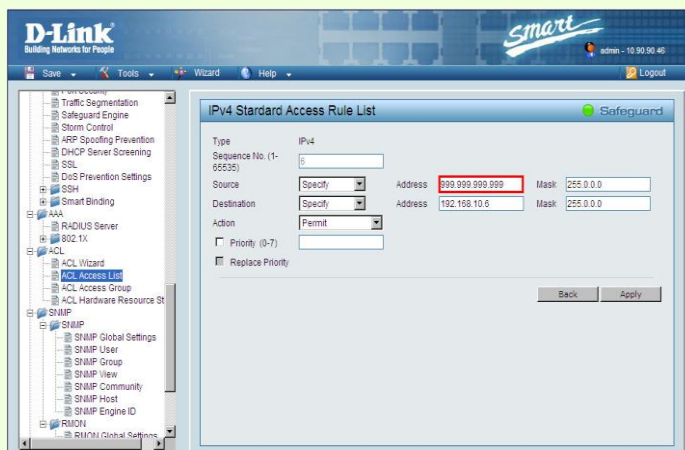
Firmware Version	Issues	Workaround
V4.00.055	<p>1. The DUT exist Head of Line blocking issue via Jumbo Frame packets. (Limitation)</p>  <p>2. When the input invaild characters in the SSH User Authentication appear unusual characters. (Known Issue)</p>   <p>3. When we setting invaild value, has not warning message. Then can't add second account. (Known Issue)</p>	None

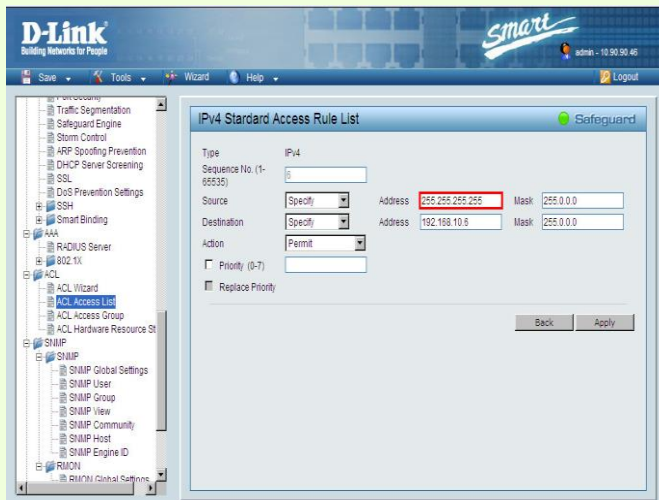


4. When set not exist VLAN ID ,system doesn't display error message. (Known Issue)

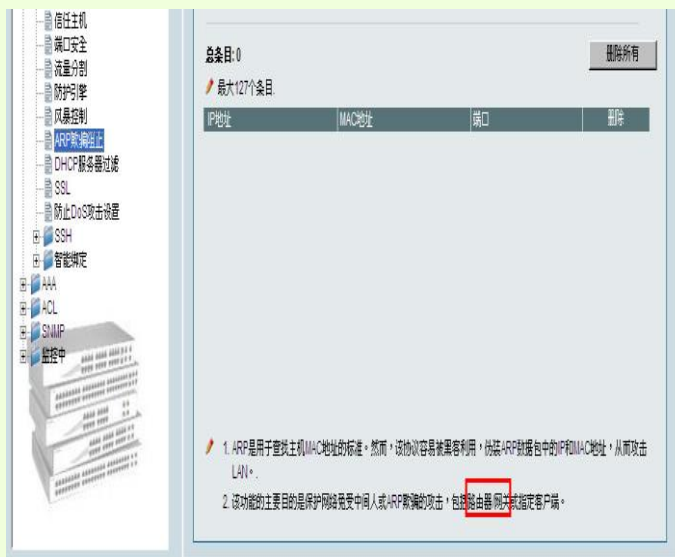


5. The ACL IP not incorrect ,but not pop-up error message. (Known Issue)

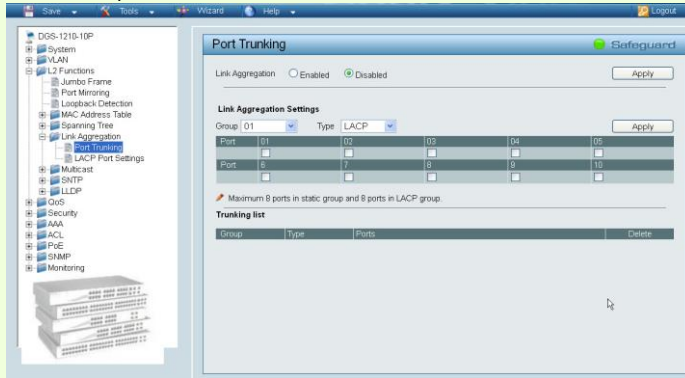




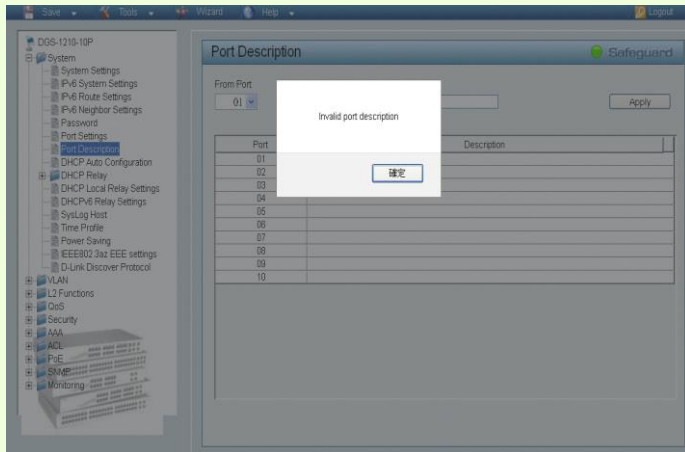
6. SNTP server can not setting ipv4 10.255.0.255. (Known Issue)
7. Traditional Chinese and Simplified Chinese translation description is different on ARP Spoofing Prevention Setting. (Known Issue)



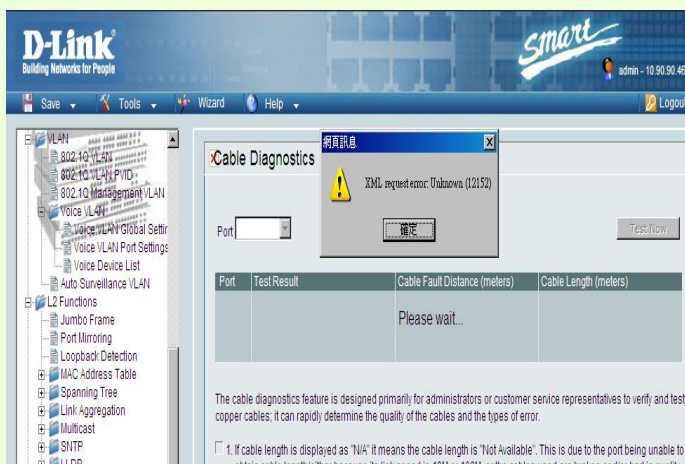
8. Port Trunking page Port number is not identical. (Known Issue)



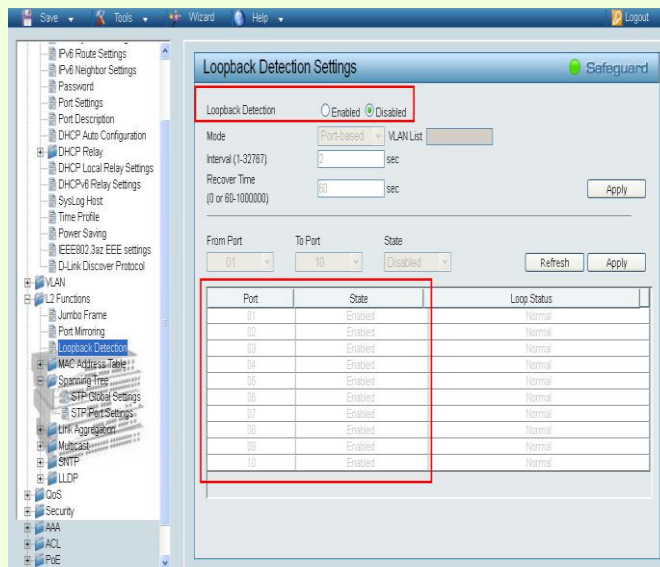
9. Port Description can't set ~!@#\$%^&\*()\_+{}[]=- to the table. (Known Issue)



10. When test control PC port to DUT it will pop-up error message. (Known Issue)



11. When Loopback Detection Global setting disable but per port enable, LACP does can not enable.. (Known Issue)



12. The DUT LBD and STP port state settings still need to confirm global settings. When LBD global settings disable, the STP port state should allow enable even LBD port state keep in enable state. Please refer to attach file. D-Link Lab respond known issue.

**STEP**

STP Global Settings -> Enabled

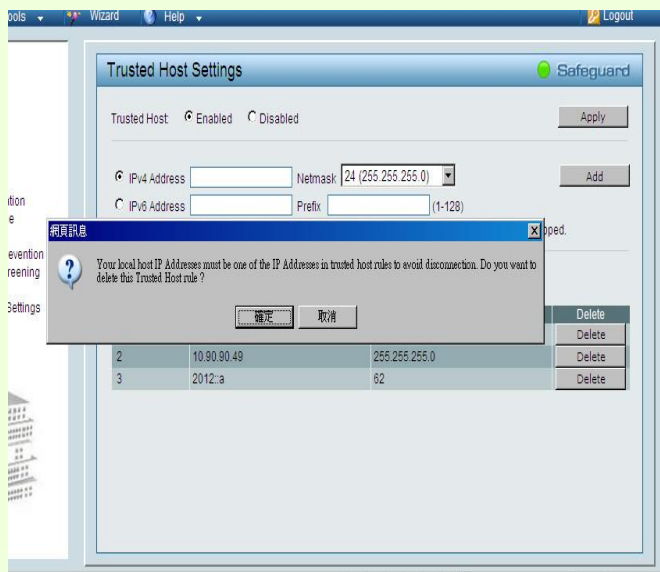
STP per Port Settings -> All port State : Disable

Loopback Detection -> Global Settings and All port state to Enable

STP Global Settings -> first change Global state to Disable then Enabled.

(Known Issue)

13. When delete IPv6 trust host, the DUT does not pop-up warning message, but IPv4 trust host support it. (Known Issue)





**Related Documentation:**

---

- DGS-1210-10P Series User Manual
- DGS-1210-10P Series Getting Started Guide