



Firmware Version: 6.00.016
Boot Code Version: 1.00.009
MIB Version: 6.00.011
D-View Module Version: NA
Published: Apr. 10, 2017

These release notes include important information about D-Link switch firmware revisions. Please verify that these release notes are correct for your switch:

- If you are installing a new switch, please check the hardware version on the device label; make sure that your switch meets the system requirement of this firmware version. Please refer to [Revision History and System Requirement](#) for detailed firmware and hardware matrix.
- If the switch is powered on, you can check the hardware version by typing "show switch" command via Telnet or by checking the device information page on the web graphic user interface.
- If you plan to upgrade to the new firmware release, please refer to the [Upgrade Instructions](#) for the correct firmware upgrade procedure.

For more detailed information regarding our switch products, please refer to [Related Documentation](#).

You can also download the switch firmware, D-View modules and technical documentation from <http://tsd.dlink.com.tw>.

Content:

Upgrade Instructions:	2
Upgrade using CLI (via Telnet).....	2
Upgrade using Web-UI.....	3
Upgrade using D-Link Network Assistant.....	5
New Features:.....	9
Changes of MIB Module:.....	9
Changes of Command Line Interface:	9
Problem Fixed:	9
Known Issues:	10
Related Documentation:	10

Revision History and System Requirement:

Firmware Version	Date	Model	Hardware Version
Runtime: v6.00.016 Boot: 1.00.009	10-Apr.-17	DGS-1210-10 DGS-1210-10P DGS-1210-10MP DGS-1210-20 DGS-1210-26 DGS-1210-28 DGS-1210-28P DGS-1210-28MP DGS-1210-52 DGS-1210-52MP	F1

Upgrade Instructions:

D-Link Smart Switches support firmware upgrade via TFTP server. You can download the firmware from D-Link web site <http://tsd.dlink.com.tw>, and copy the downloaded firmware to the TFTP server folder. Please make sure that the TFTP server is accessible from the switch via networks.

Upgrade using CLI (via Telnet)

1. Make sure the network connection between the switch and PC is active.
2. Use software that supports telnet, for example, HyperTerminal or Telnet command in Microsoft Windows, to connect to the switch. If you are using Telnet command, type the command followed by the switch IP address, eg. *telnet 10.90.90.90*.
3. The logon prompt will appear.

The switch will prompt the user to enter his/her username and password. It should be noted that upon the initial connection, both the default user name and password are **admin**.

To upgrade the switch firmware, execute the following command:

Command	Function
download{firmware_fromTFTP tftp://ip-address/filename cfg_fromTFTP tftp://ip-address/filename}	Download firmware file from the TFTP server to the switch.

When completing firmware upgrade, the following messages will pop up.

```
Device will reboot after firmware upgraded successfully
Image upgraded successfully
```

4. Execute the following command to check the firmware version and switch's information.

Command	Function
show switch	Display the information of current firmware and boot version.

Example:

1. **DGS-1210-28MP:**
Command: download firmware_fromTFTP tftp://10.90.90.91
DGS-1210-28MP-F1-6-00-011.hex

Device will reboot after firmware upgraded successfully
Image upgraded successfully

2. **DGS-1210-28MP:**

Command: show switch

DGS-1210-28MP> show switch

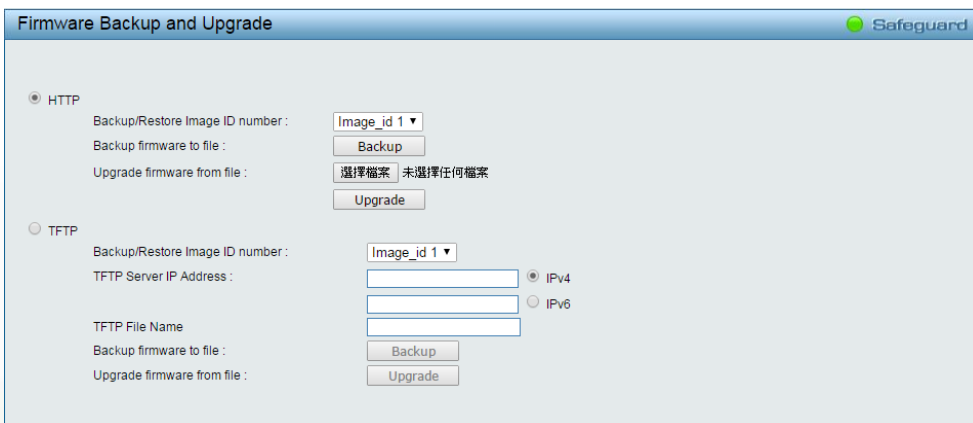
```
System name                :
System Contact             :
System Location            :
System up time             : 0 days, 0 hrs, 5 min, 44 secs
System Time                : 01/01/2017 00:05:07
System hardware version    : F1
System firmware version    : 6.00.011
System boot version        : 1.00.005
System serial number       : QBDGS12102800
MAC Address                : 00-01-AA-AA-E1-28
```

Upgrade using Web-UI

1. Connect a workstation installed with java SE runtime environment to any switch port of the device.
2. Open the web browser from the workstation and enter the IP address of the switch. The switch's default IP address is 10.90.90.90.
3. Enter administrator's password when prompted. The password is **admin** by default.
4. To update switch's firmware or configuration file, select **Tools > Firmware Backup & Upgrade** from the banner.



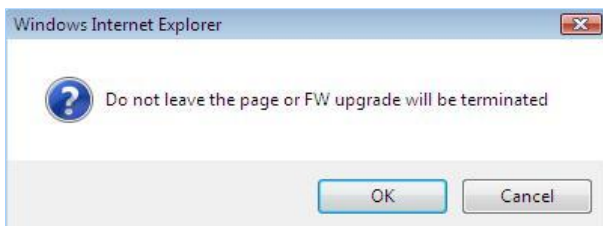
5. Two methods can be selected : **HTTP** or **TFTP**



6. Select **HTTP** to upgrade the firmware to or from your local drive of PC.
 - a. Click **Browse** to browse your inventories for a saved firmware file
 - b. Click **Upgrade** after selecting the firmware file you want to restore
 - c. Click **OK** to continue with firmware upgrade



d. Click **OK** to continue with firmware upgrade



e. Wait until the "Firmware Upgrade Successful" message pops up and login again after device boots up.



- 7. Select **TFTP** to upgrade the firmware to or from a remote TFTP server.
 - a. Enter the name of the firmware file located on the TFTP server
 - b. Click **Upgrade** after selecting the firmware file you want to restore
 - c. Click **OK** to continue with firmware upgrade

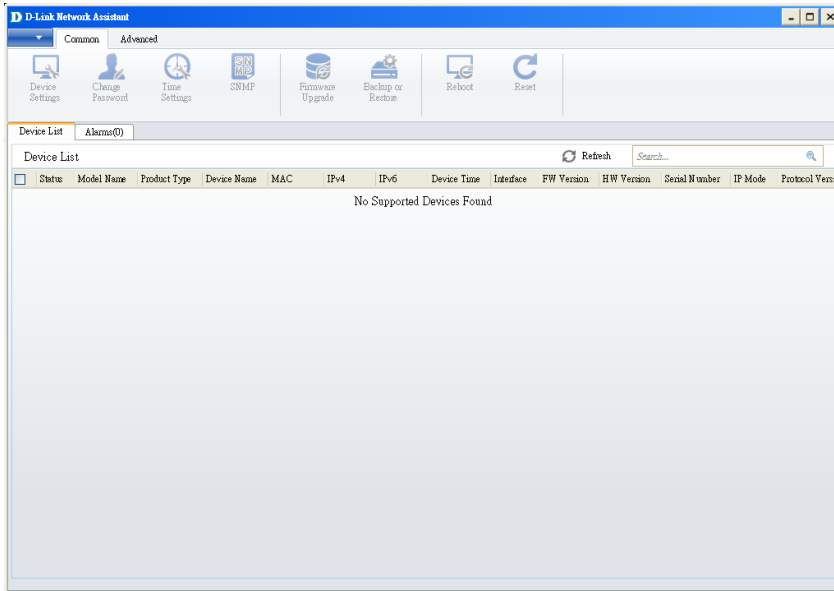


d. Wait until the firmware upgrade ends and login again after device boots up.

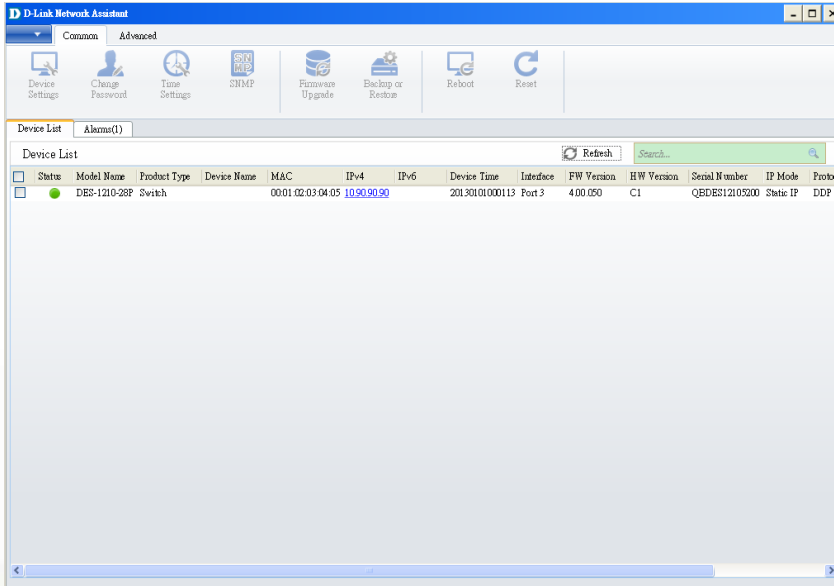


Upgrade using D-Link Network Assistant(standalone version 2.0.2.4)

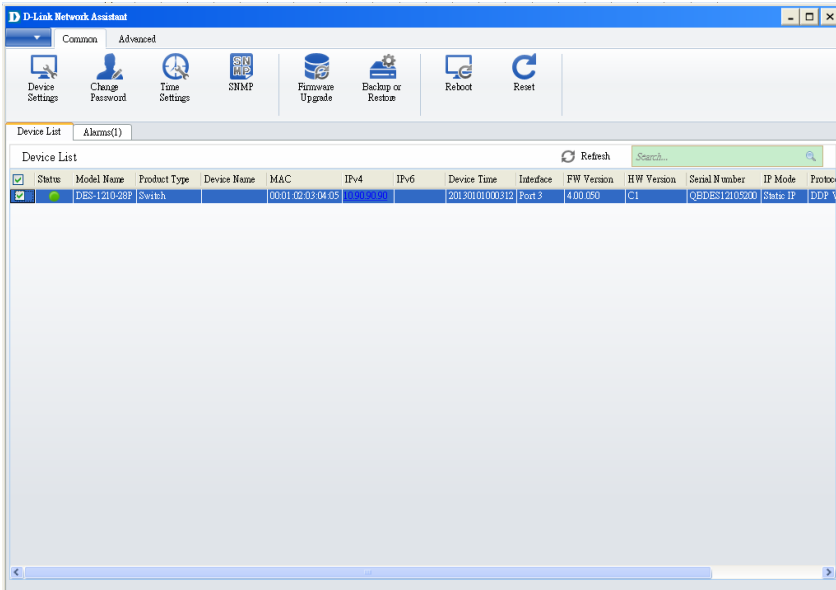
1. Connect a workstation installed with java SE runtime environment to any switch port of the device
2. Execute D-Link Network Assistant



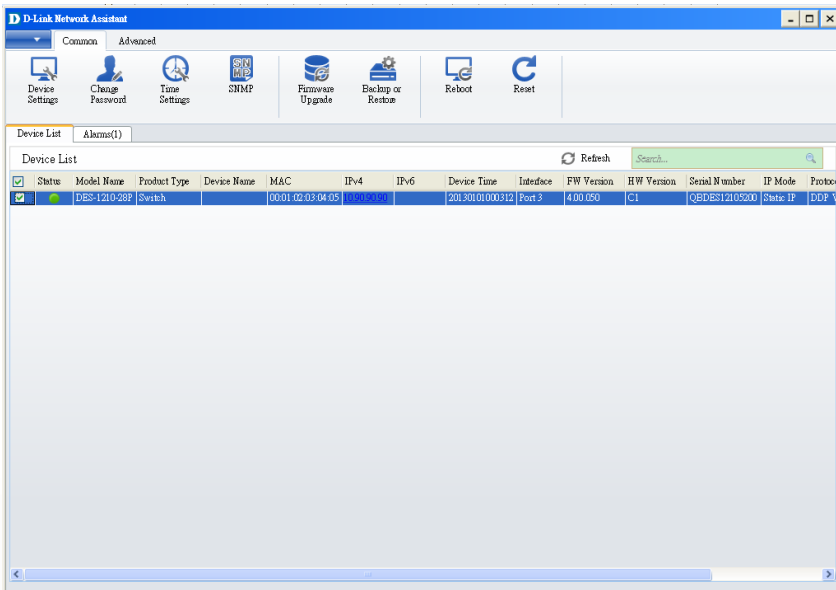
3. Click Refresh button to search target switch



4. Single click the icon of the column to choose the target switch



5. Click Firmware Upgrade button



- Select PC IP address is used to connect the target switch, then click Browse button and select the firmware file (Model name_HW ver._FW ver. .hex) on your local hard drive.

The screenshot shows the 'Firmware Upgrade' web interface. At the top, there are two tabs: '1 Firmware Upgrade' (active) and '2 Confirm Summary'. Below the tabs, the 'TFTP IP' is set to '10.90.90.45'. Under 'Upgrade Selection', the radio button 'Use one firmware file for all devices' is selected. A text box contains the file path 'D:\DES-1210-28P-C1-4-00-050.hex', and a 'Browse' button is next to it. A 'Next' button is located at the bottom right of the interface.

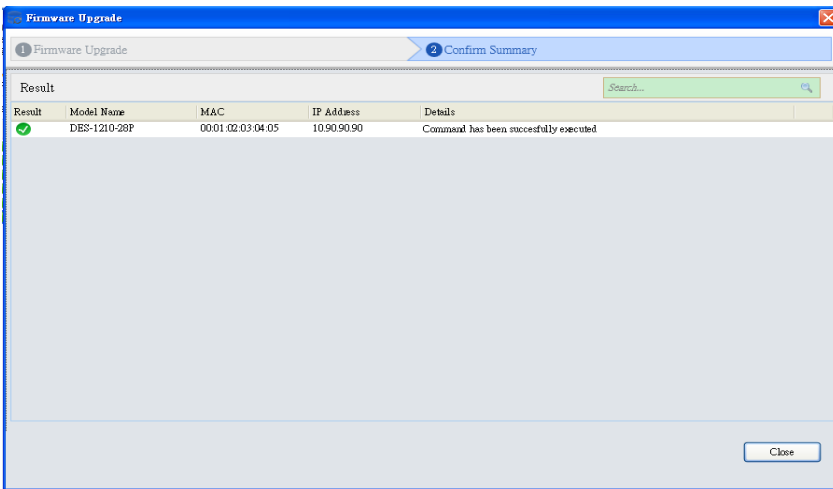
- Click the checkbox and click "Submit" button to start firmware upgrade.

The screenshot shows the 'Firmware Upgrade' web interface at the 'Confirm Summary' step. The 'TFTP IP' is '10.90.90.45' and the 'Firmware File' is 'D:\DES-1210-28P-C1-4-00-050.hex'. Below this is a table titled 'Apply to All Devices' with the following data:

IsSupported	Model Name	MAC	IP Address	Serial Number
Yes	DES-1210-28P	0001.02.03.04.05	10.90.90.90	QEDES12103200

At the bottom, there is a 'Notification' section with a warning: 'Warning : Do not disconnect the network or close this program during the upgrade process; unrecoverable damage to the devices may result. Please note that during the upgrade process, your devices may reboot.' A checkbox labeled 'I understand the risks' is checked. To the right is an 'Authentication' section with 'User Name' set to 'admin' and 'Password' masked with '*****'. 'Previous' and 'Submit' buttons are at the bottom.

8. Once the message changed to success, click "Close" button to complete and exit the firmware upgrade



Note1: For DNA (Chrome DNA 3.0.2.7 or above), please refer to DNA manual v2.0 for more detail.

New Features:

Firmware Version	New Features
V6.00.016	First Release

Changes of MIB Module:

For detailed changes of MIB content, please refer to the modification history in each MIB file.

Firmware Version	MIB File	New Features
V6.00.011	DGS-1210-FX-Series-6-00-011.mib	First Release

Changes of Command Line Interface:

The section below only shows command line changes that may bring backward compatibility issues with configuration settings for previous version of firmware. Any new feature commands that do not have backward compatibility issues are not included in the below section.

Firmware Version	Changes
V6.00.016	First Release

Problem Fixed:

Firmware Version	Problems Fixed
V6.00.016	First Release

* D-Link tracking number is enclosed in ()

Known Issues:

Firmware Version	Issues	Workaround
V6.00.016	<p>[DBG17030311] DGS-1210/F1 series will auto-reboot if DUT receive packets of LLDP_MGMT_IPv6_OID128Bytes packet</p> <p>[DBG17030298] After we set "port description" of DGS-1210/F1 series, the page sometimes becomes abnormal.</p>	NA

Related Documentation:

- DGS-1210 Series F1 User Manual V1.0