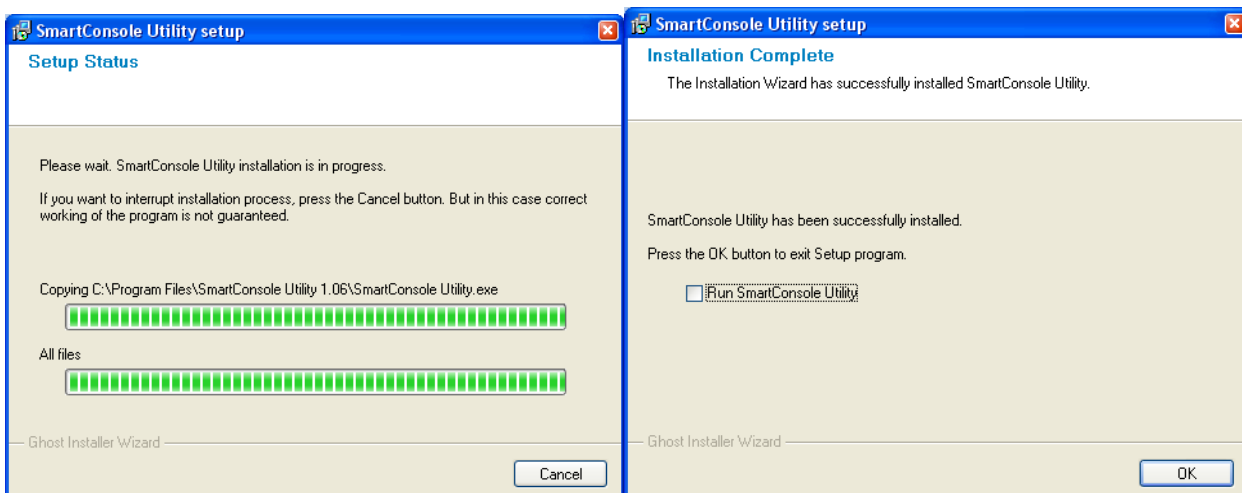
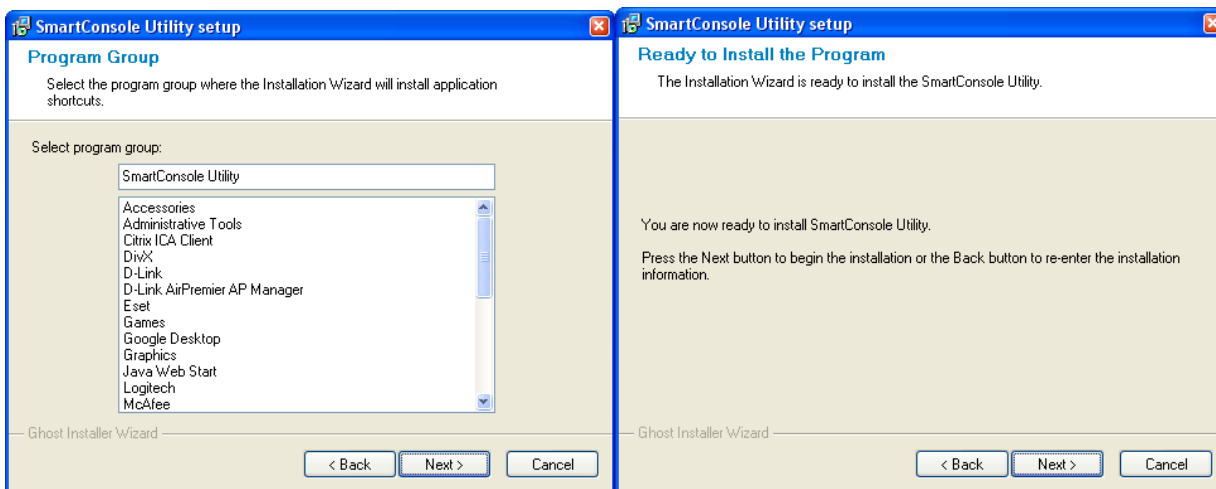
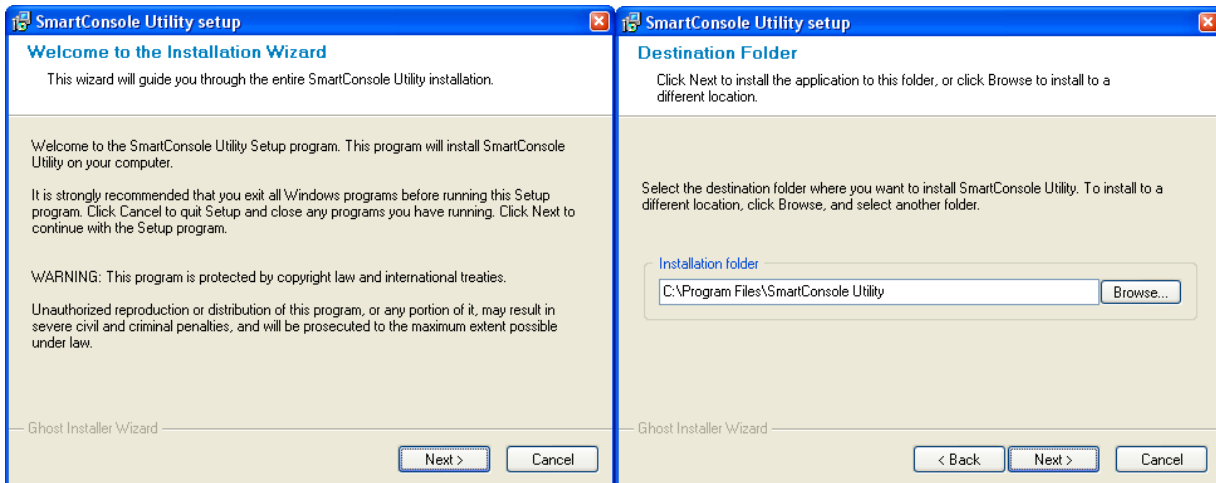
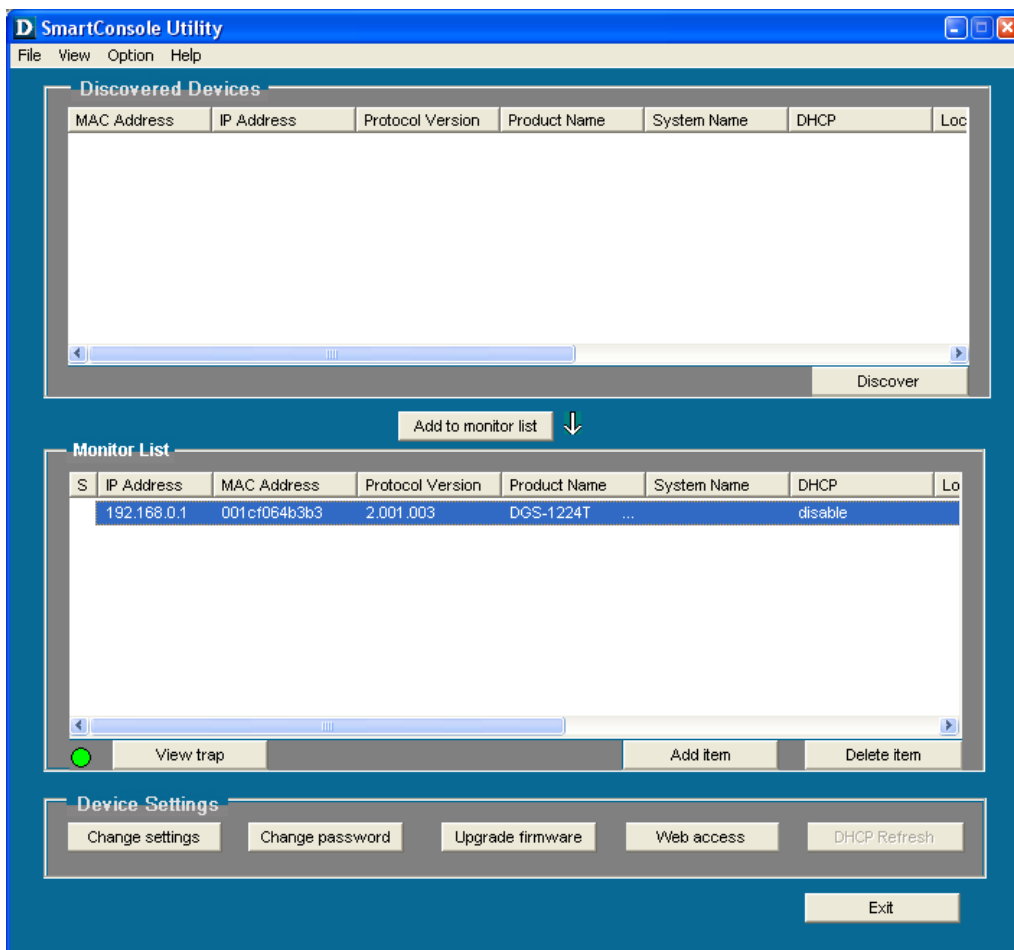
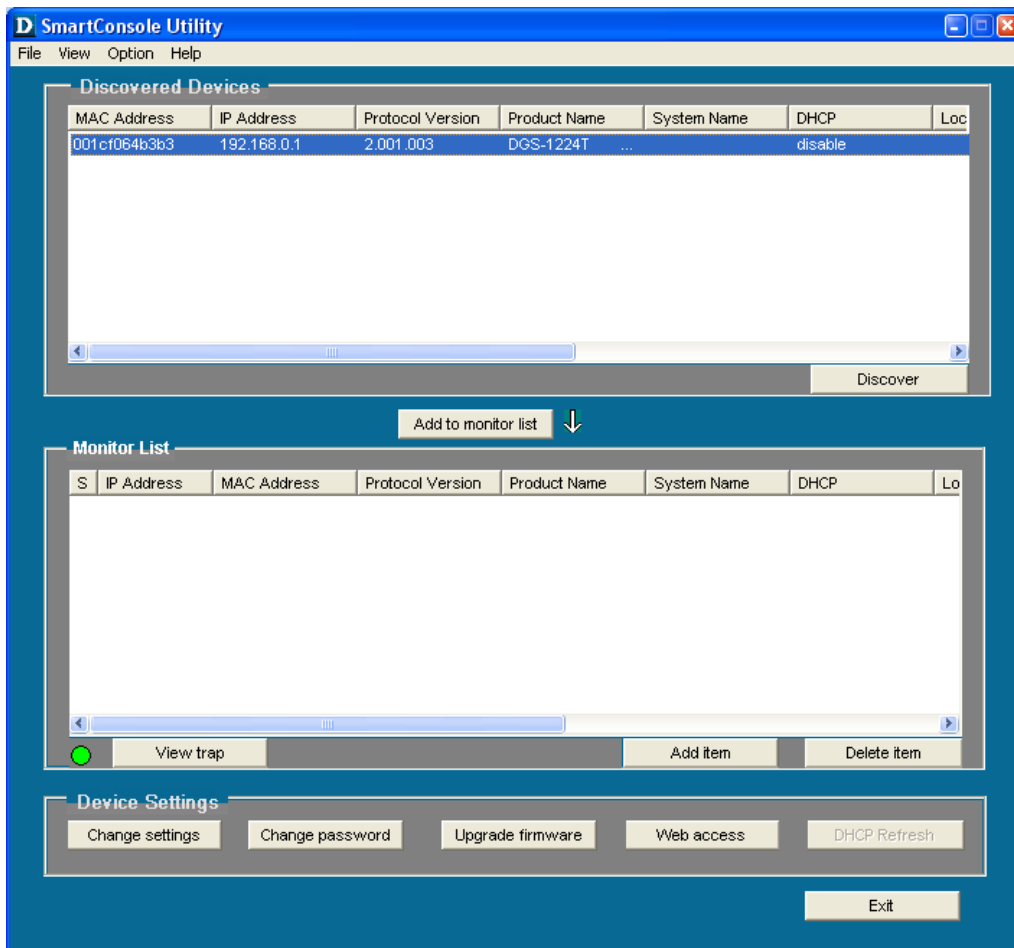


Smart Console Utility 1.07





View Trap:

Trap information

S	Time	IP	Event
!	10/17/2007 09:27:12	192.168.0.1	DGS-1224T (3003)Port 17 copper link up
!	10/17/2007 09:27:12	192.168.0.1	DGS-1224T (3003)Port 19 copper link up
!	10/17/2007 09:28:29	192.168.0.1	DGS-1224T (1001)System bootup
!	10/17/2007 09:28:29	192.168.0.1	DGS-1224T (3003)Port 17 copper link up
!	10/17/2007 09:28:29	192.168.0.1	DGS-1224T (3003)Port 19 copper link up
!	10/17/2007 09:28:44	192.168.0.1	DGS-1224T (1002>Login invalid password from 19
!	10/17/2007 09:28:52	192.168.0.1	DGS-1224T (1002>Login invalid password from 19

Clear all

OK

Change settings

Product name	DGS-1224T	MAC Address	001cf064b3b3
IP Address	192 . 168 . 0 . 1	Subnet mask	255 . 255 . 255 . 0
Gateway	192 . 168 . 0 . 254	Send trap to	0 . 0 . 0 . 0
System name		Location	
Password		Group Interval	120
DHCP	<input type="radio"/> Enabled <input checked="" type="radio"/> Disabled		
Set		Cancel	

Change password

New password		Confirm password	
Original password			
Set		Cancel	

Firmware Upgrade

Device Information

Device IP: 192.168.0.1

Device Mac: 001cf064b3b3

Upgrade Setting

Firmware Path: C:\Firmware\DGS1224T\DGS-122

Password: *****

Upgrade State:

Firmware upgrade steps:

First load **FWU** file,

Then **ldr** file,

Then **FWN** file.

Open

Look in: DGS-1224T_D1_Fw v4.10.02

1224TFWN.hex
1224TFWU.hex
1224Tldr.hex

File name: 1224TFWU.hex

Files of type: hex File (*.hex)

