



Firmware Version: V1.01.004
Prom Code Version: V1.00.011
Published: 2023/07/31

These release notes include important information about D-Link DGS-1520 Series firmware revisions. Please verify that these release notes are correct for your switch:

- If you are installing a new switch, please check the hardware version on the device label; make sure that your switch meets the system requirement of this firmware version. Please refer to [Revision History and System Requirement](#) for detailed firmware and hardware matrix.
- If the switch is powered on, you can check the hardware version by typing "show version" command or by checking the device information page on the web graphic user interface.
- If you plan to upgrade to the new firmware release, please refer to the [Upgrade Instructions](#):

D-Link switches support firmware upgrade via TFTP server. You can download the firmware from D-Link web site <http://tsd.dlink.com.tw>, and copy the downloaded firmware to the TFTP server folder. Please make sure that the TFTP server is accessible from the switch via networks.

For more detailed information regarding DGS-1520 Series switch products, please refer to [Related Documentation](#).

You can also download the switch firmware, D-View and technical documentation from <http://tsd.dlink.com.tw>.

Content:

Revision History and System Requirement.....	3
Upgrade Instructions:	3
Upgrade using CLI (RJ-45 console port)	3
Upgrading by using Web-UI.....	4
New Features	7
Changes of MIB & D-View Module.....	7
Changes of Command Line Interface	7
Problem Fixed.....	8
Known Issues	8
Related Documentation	8

Revision History and System Requirement

Firmware Version	Date	Model	Hardware Version
Runtime: v1.01.004 PROM: v1.00.011	2023/7/31	DGS-1520-28	A1
		DGS-1520-28MP	A1 · A2
		DGS-1520-52	A1
		DGS-1520-52MP	A1 · A2
Runtime: v1.00.029 PROM: v1.00.011	2020/08/06	DGS-1520	A1

Upgrade Instructions:

D-Link switches support firmware upgrade via TFTP server. You can download the firmware from D-Link web site <http://tsd.dlink.com.tw>, and copy the downloaded firmware to the TFTP server folder. Please make sure that the TFTP server is accessible from the switch via networks.

Upgrade using CLI (RJ-45 console port)

Connect a workstation to the switch console port and run any terminal program that can emulate a VT-100 terminal. The switch console port default settings are as follows:

- ◆ Baud rate: **115200**
- ◆ Data bits: **8**
- ◆ Parity: **None**
- ◆ Stop bits: **1**

The switch will prompt the user to enter his/her username and password. The default username and password are as below:

Username: **admin**

Password: **admin**

To upgrade the switch firmware, execute the following commands:

Command	Function
<code>copy tftp://location/filename flash: filename</code>	Download firmware file from the TFTP server to the switch.
<code>boot image URL(filename)</code>	Change the boot up image file.
<code>show boot</code>	Display the information of current boot image and configuration.
<code>reboot</code>	Reboot the switch.

Example:

DGS-1520#copy tftp: //192.168.0.27/firmware.had flash: run.had

Address of remote host [192.168.0.27]

Source filename [firmware.had]

```
Destination filename [run.had]
Accessing tftp://192.168.0.27/ firmware.had...
Transmission start...
Transmission finished, file length 5156864 bytes.
Please wait, programming flash... Done
```

```
DGS-1520#configure terminal
DGS-1520(config)#boot image c:/switch-image1.had
```

```
DGS-1520#show boot
```

```
Unit 1
Boot image: /c:/1.00.029
Boot config: /c:/config.cfg
```

```
DGS-1520#reboot
Are you sure you want to proceed with the system reboot? (y|n) y
Please wait, the switch is rebooting...
```

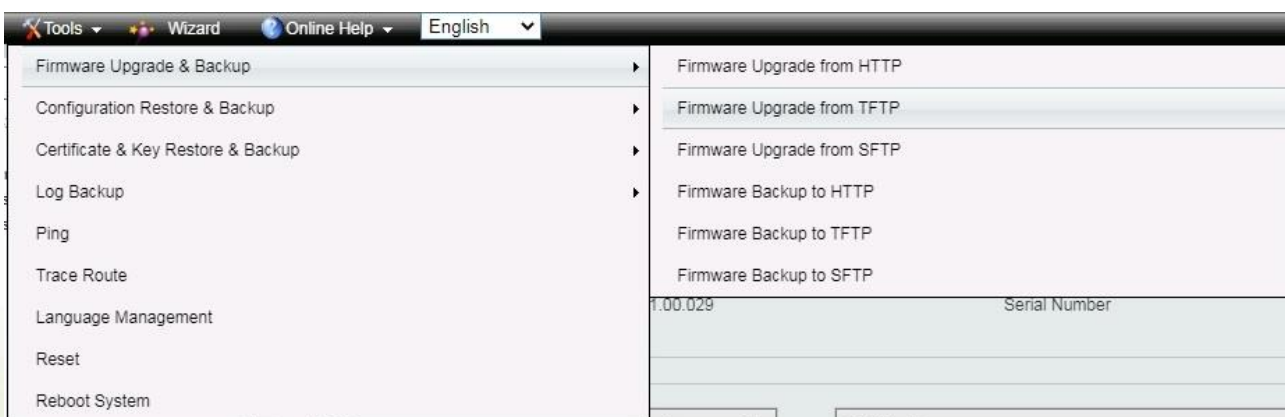
Upgrading by using Web-UI

1. Connect a workstation installed with java SE runtime environment to management port of the device and also connect console cable to switch's console port.
2. Open the web browser from the workstation and enter the IP address of the switch. The switch's default IP address is **10.90.90.90**
3. Enter administrator's username and password when prompted. **It should be noted starting from R1.20 formal firmware release the default login settings are as below:**

Username: admin

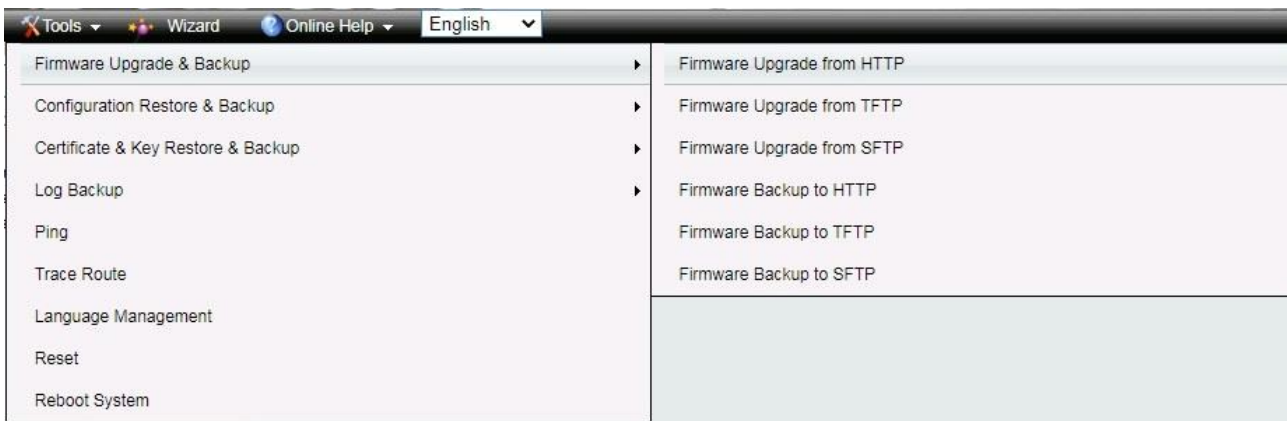
Password: admin

4. To update switch's firmware or configuration file via TFTP, select **Tools > Firmware Upgrade & Backup > Firmware Upgrade from TFTP**.



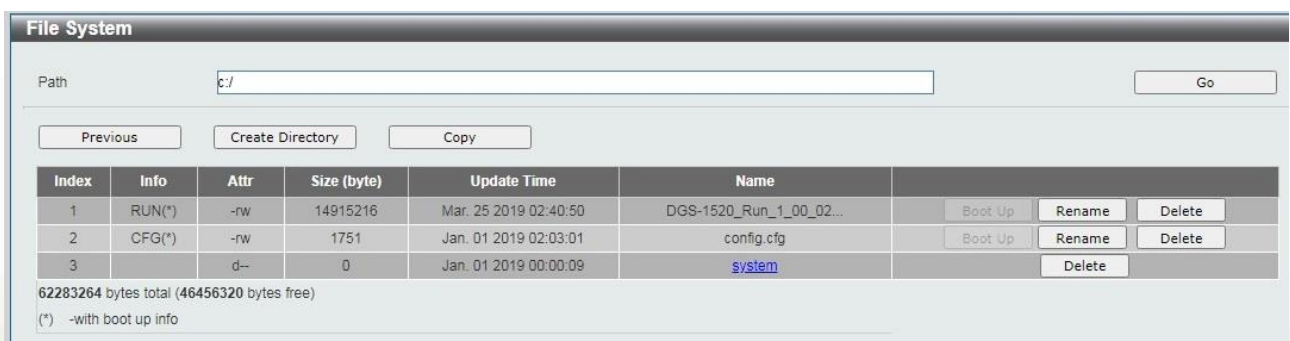
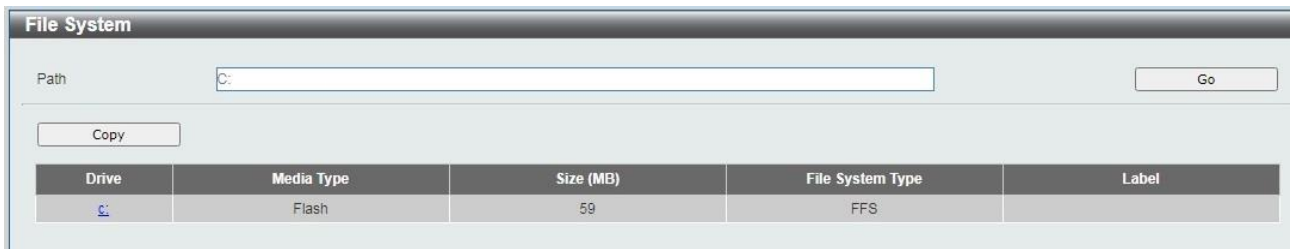
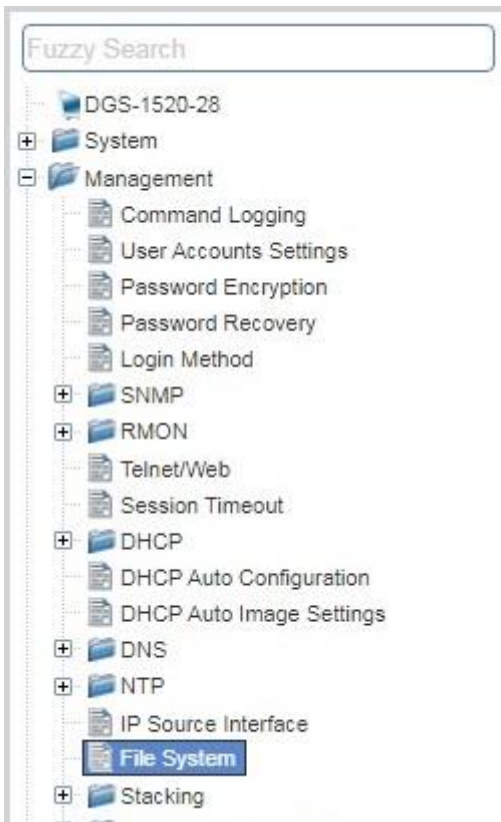
5. Enter the TFTP Server IP address.
6. Enter the name of the firmware file located on the TFTP server.
7. Enter the destination path and the desired file name.
8. Click "**Upgrade**" button.

9. Transmission will start and wait until the status is completed by displaying **100%** complete.
10. Alternatively, the switch's firmware or configuration file can also be upgraded via HTTP, select **Tools > Firmware Upgrade & Backup > Firmware Upgrade from HTTP**.



11. Enter the source and destination file.
12. Click "**Upgrade**" button.

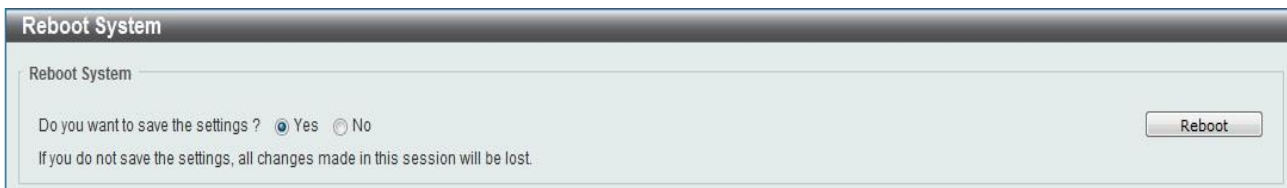
13. Transmission will start and wait until the status is completed by displaying **100%** complete.
14. To select the boot up image used for next reboot, click **Management > Flash System** in the function tree and then click the **C:** drive name. When you see the files list, click corresponding **Boot Up** button to specify the firmware that will be used for next and subsequent boot up.



15. To reboot the switch, select **Tools > Reboot System** from the banner.



16. Select **Yes** and click **Reboot** button to reboot the switch.



New Features

Firmware Version	New Features
V1.01.004	None
V1.00.029	First release, please refer to datasheet and manual for detail function support

Changes of MIB & D-View Module

The new features of MIB file are also included in the corresponding D-View module. Please download the D-View module on <http://tsd.dlink.com.tw>. For detailed changes of MIB content, please refer to the modification history in each MIB file.

Firmware Version	MIB File
V1.01.004	None
V1.00.029	First release, please refer to external specification for detail MIB support

Changes of Command Line Interface

The section below only shows command line changes that may bring backward compatibility issues with configuration settings for previous version of firmware. Any new feature commands that do not have backward compatibility issues are not included in the below section.

Firmware Version	Changes
V1.01.004	None
V1.00.029	First release

Problem Fixed

Firmware Version	Problems
V1.01.004	<ol style="list-style-type: none"> Fixed request for fix of Japanese web GUI[DI20201202000002-Japan] Fixed capability Received Bits in auto-negotiation.[DI20201207000001-Japan] Fixed PD Alive via L3 SW. / relate to DI20190903000006 [DI20201126000001-Japan] Fixed doesn't show its whole configuration for sh run int. / similar to DI20201214000001[DI20220526000002-Japan]] Fixed the CTP interval in vlan mode exceeds the configured interval. / relate to DI20171218000006[DI20201222000002-Japan]] Fixed loopback internal phy doesn't work at all. / same as DI20201222000001[DI20220523000001-Japan]] Fixed doesn't accept 'no ch' on an ERPS int.[DI20220523000004-Japan] Fixed loopback internal phy doesn't work at all.[DI20201222000001-Japan] Fixed Loop is not detected on VLAN[DI20210323000001-Japan] Fixed channel interface does not contain 'no description'[DI20220607000004-Japan] Fixed storm-control unicast level 0 / same as DI20140325000011[DI20201109000005-Japan] Fixed doesn't reach 1,024 authenticated MACs in MBA after several re-authentication period. / same as DI20200512000002[DI20201109000004-Japan] Fixed some parameters are invalid or unsupported operation. in sftp. / same as DI20180921000009[DI20201204000001-Japan] Fixed [DGS-1520/1.00] DBCS in WAC / same as DI20180213000003 and

- DI20180418000005[DI20201110000002-Japan]
15. Fixed MBA auth state mis-match after rebooting its stacking master.[DI20201215000004-Japan]
 16. Fixed MBA auth state mis-match after rebooting its stacking master.[DI20201215000004-Japan]---New issue
 17. Fixed RADIUS - Active Directory - permitted characters in user names[DEUR20210702000009-UKI]
 18. Fixed doesn't show its whole configuration for sh run int.[DI20201207000004-Japan]
 19. Fixed Failed to set the value of the MIB dSyslogServerFacility(1.3.6.1.4.1.171.14.13.1.5.1.7) to kern(0)]
 20. Fixed There remains 0x00 before 0x0d, 0x0a for the log of uni 2 in copy log sftp:. / relate to DI20180921000005[DI20201204000005-Japan]
 21. Fixed there remains 0x00 before 0x0d, 0x0a for the log of uni 2 in copy log tftp:. / relate to DI20180921000005[DI20201204000004-Japan]]
 22. Fixed issue with L3 Interface[DEUR20210125000006-Central Europe]
 23. Fixed doesn't show its whole configuration for sh run int.[DI20201207000004-Japan]
 24. Fixed keeps ip addr on mgmt 0 in a backup master. / same as DI20210317000001[DI20220704000006-Japan]
 25. Fixed response to ping and telnet became slower suddenly and unexpectedly[DI20211005000010-Japan]
 26. Fixed PIM-DM continues to forward multicast when receiving IGMP leave message[DUSA20211224000001-USA]]
 27. Fixed [DBG20050708] It's not empty when show auto_negotiation on fiber ports.
 28. Fixed [DBG20050684] Under different speed member port of LACP, DUT will select the first port in budl status.
 29. Fixed [DBG20050720] error message display issue on GUI dhcpv6 pool prefix configuration.
 30. Fixed [DBG20050981] can't configure dhcpv6 with only one entry. (Can find "address prefix 2001:1::1/128 lifetime 200 100" doesn't in running-config).
 31. Fixed [DBG20060127][DHCPv6][1.00.029]DGS-1520 given increase address in advertise when receive same solicit packets.
 32. Fixed [DBG20060064] [RIP] 'ip rip v2-broadcast' cannot be kept.

	<p>33. Fixed [DBG20060082] v2-Broadcast cannot be configured by web.</p> <p>34. Fixed [DBG20060152] [RIP] Passive-interface unable to learn route entry.</p> <p>35. Fixed [D-lab][DKP0911064-004]The DHCP snooping work with DHCP relay issue , DHCP snooping VID refresh error after renew.</p>
V1.00.029	First release

* D-Link tracking number is enclosed in ()

Known Issues

Firmware Version	Issues	Workaround
V1.01.004	None	
V1.00.029	None	

* D-Link tracking number is enclosed in ()

Related Documentation

- DGS-1520 Series Web UI Manual Release
- DGS-1520 Series CLI Manual Release
- DGS-1520 Series H/W Installation Guide Release