

WIRELESS G

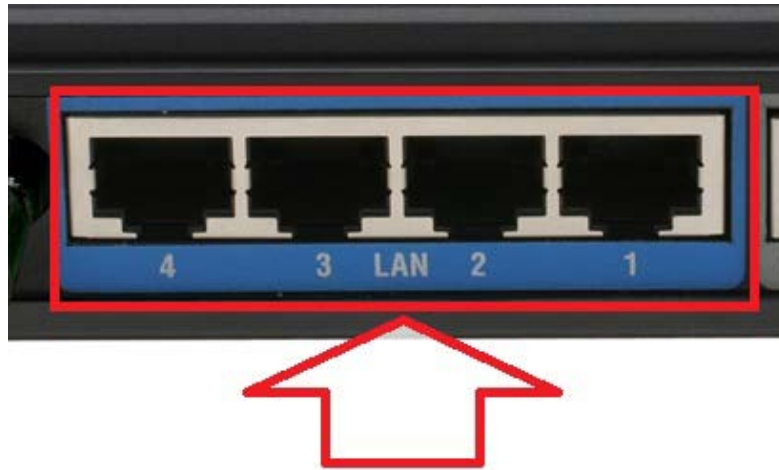
Login to the Web Configuration



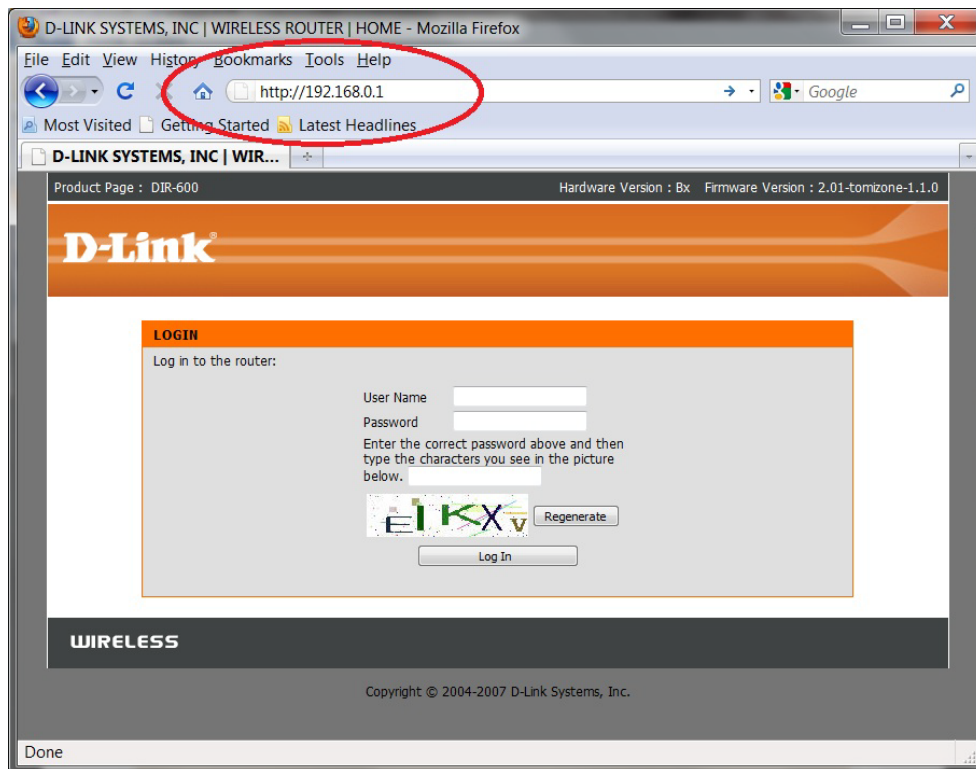
This document will detail how to gain access to the Web Configuration on the DIR-600.

Gaining access to the Web Configuration can allow you to unleash the full potential of the DIR-600 allowing access to all configuration options.

1. To allow login to the Web Configuration, first you will need a computer/laptop to be connected to one of the LAN Ethernet ports.

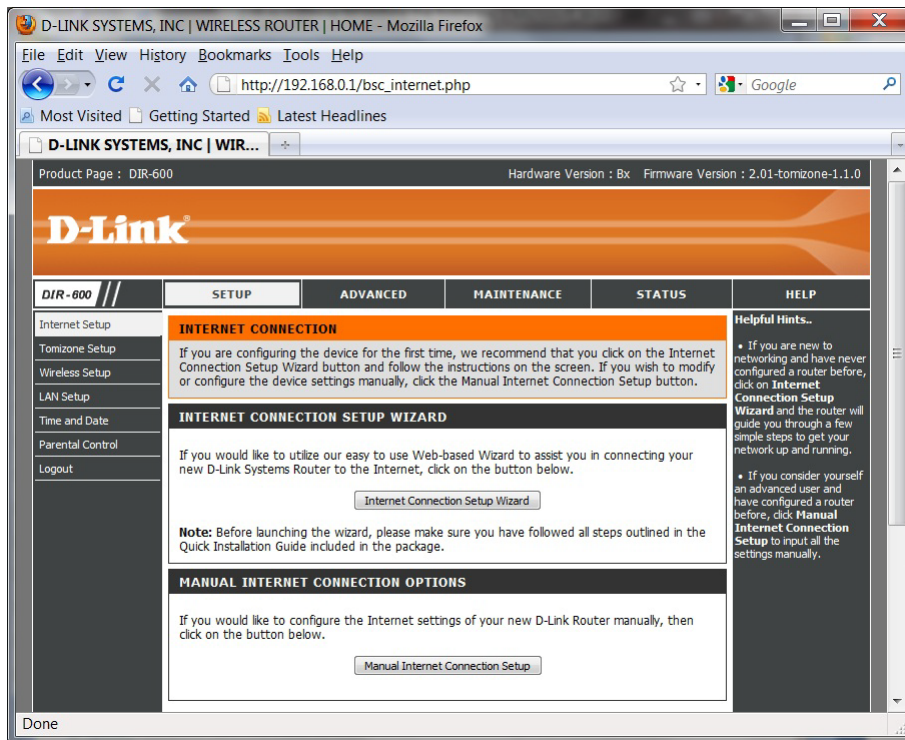


2. Proceed to open an Internet Browser and in the address bar, type in <http://192.168.0.1>



NOTE: The default username is admin and the password is left blank. The DIR-600 also adds extra login protection using Graphical Authentication, this will need to be keyed in as well to login successfully. Proceed to login.

3. You have successfully gained access to the Web Configuration.



Note: This can also be completed using an Wireless connection however it is not recommended to change the wireless aspects unless you are connected using the Ethernet LAN ports.

IMPORTANT:

Please remember to ensure your DIR-600 has the most current firmware version applied. To apply this firmware please refer to the Technical Support Knowledge Base.