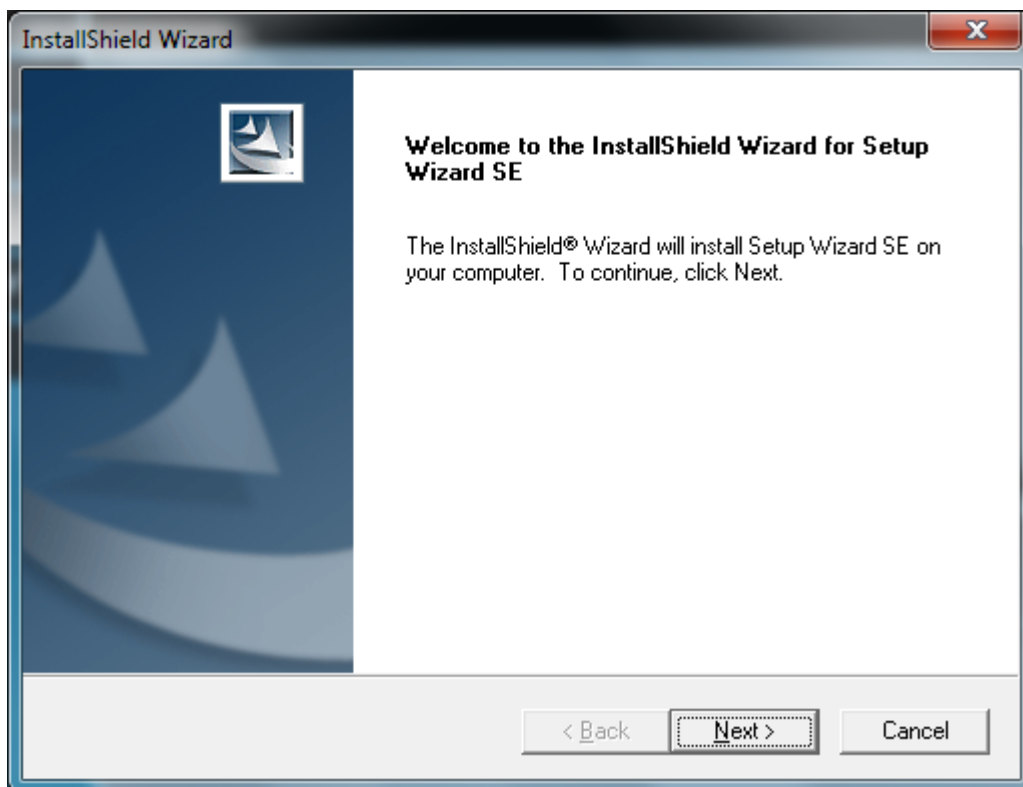
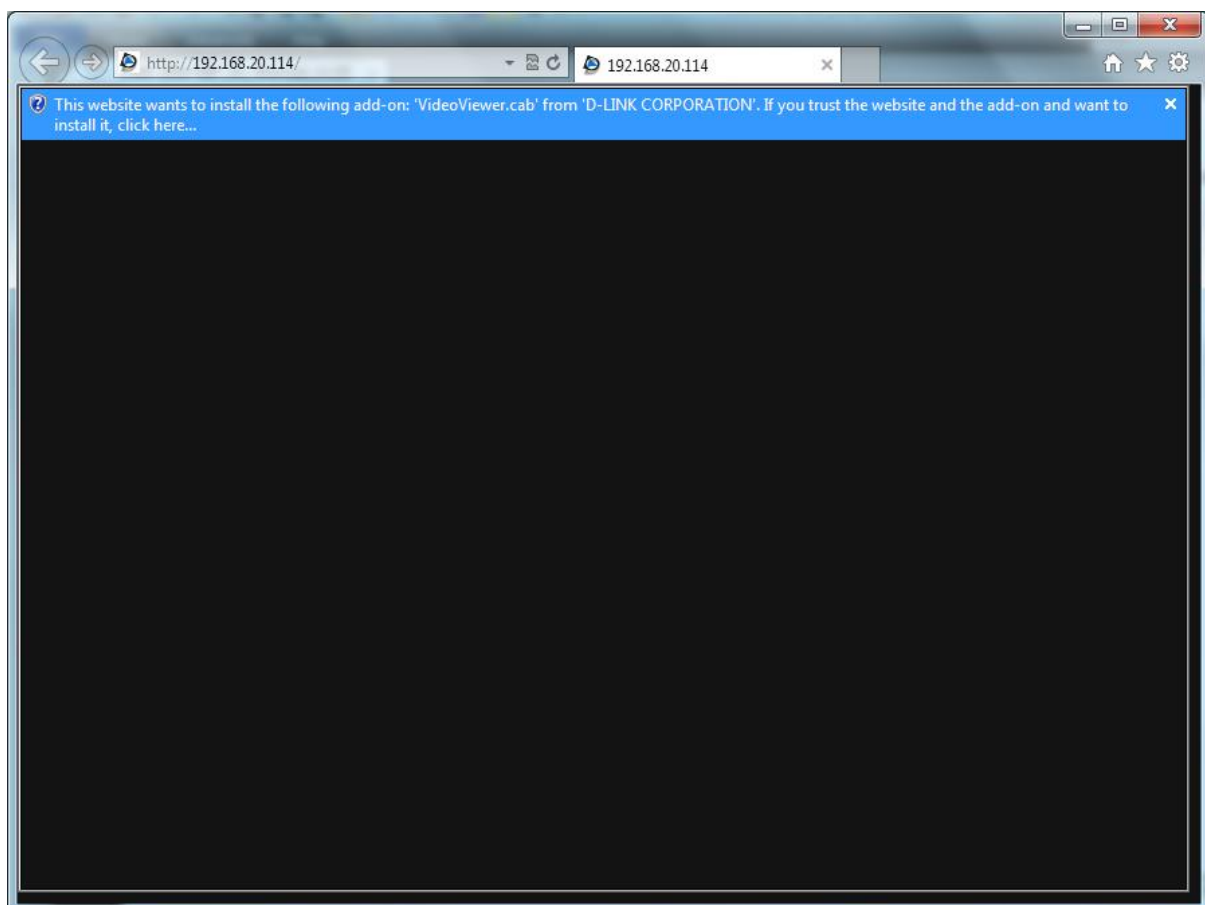
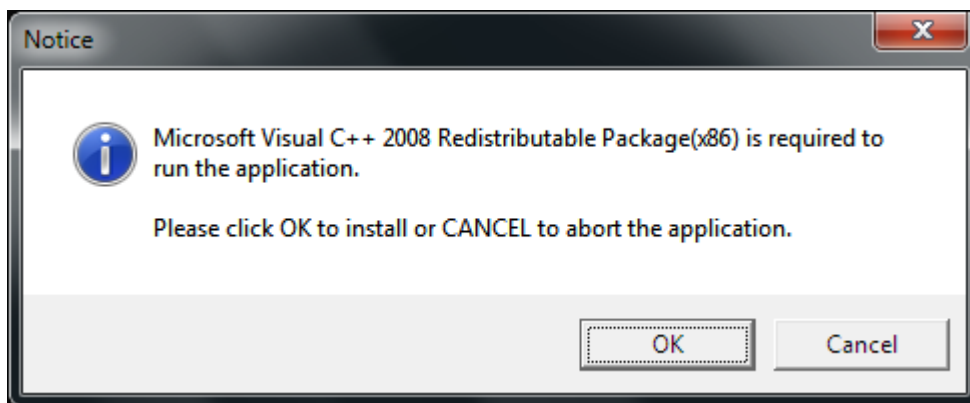
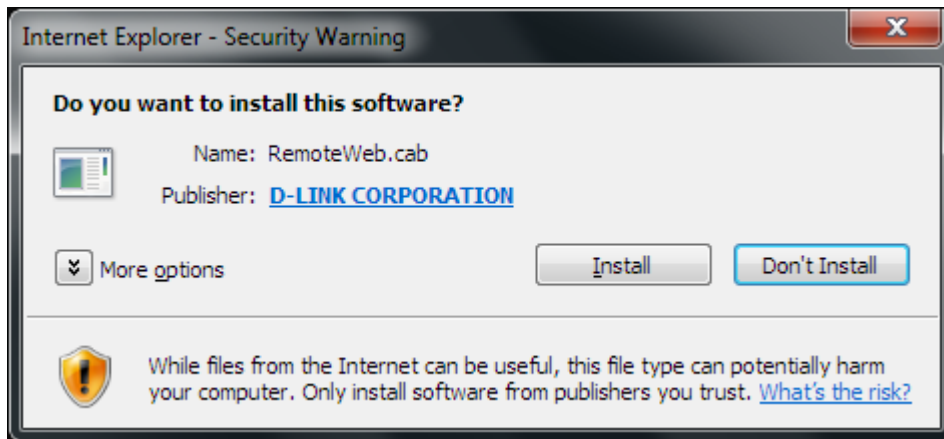


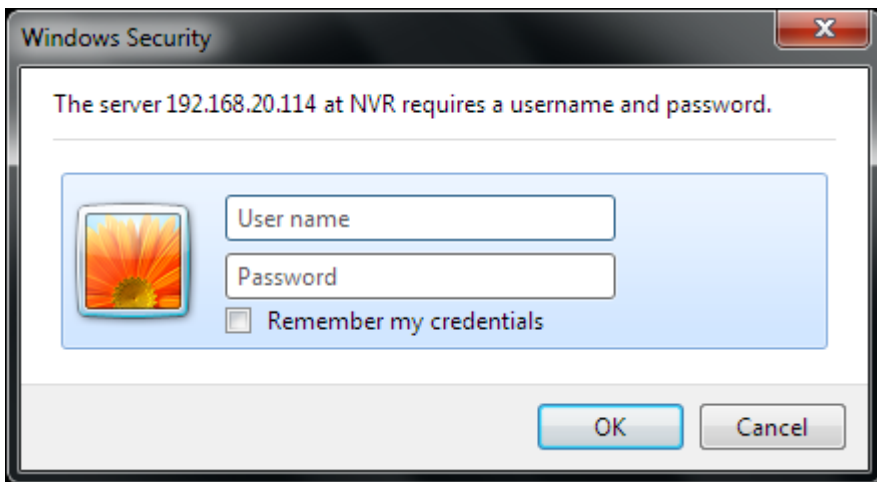
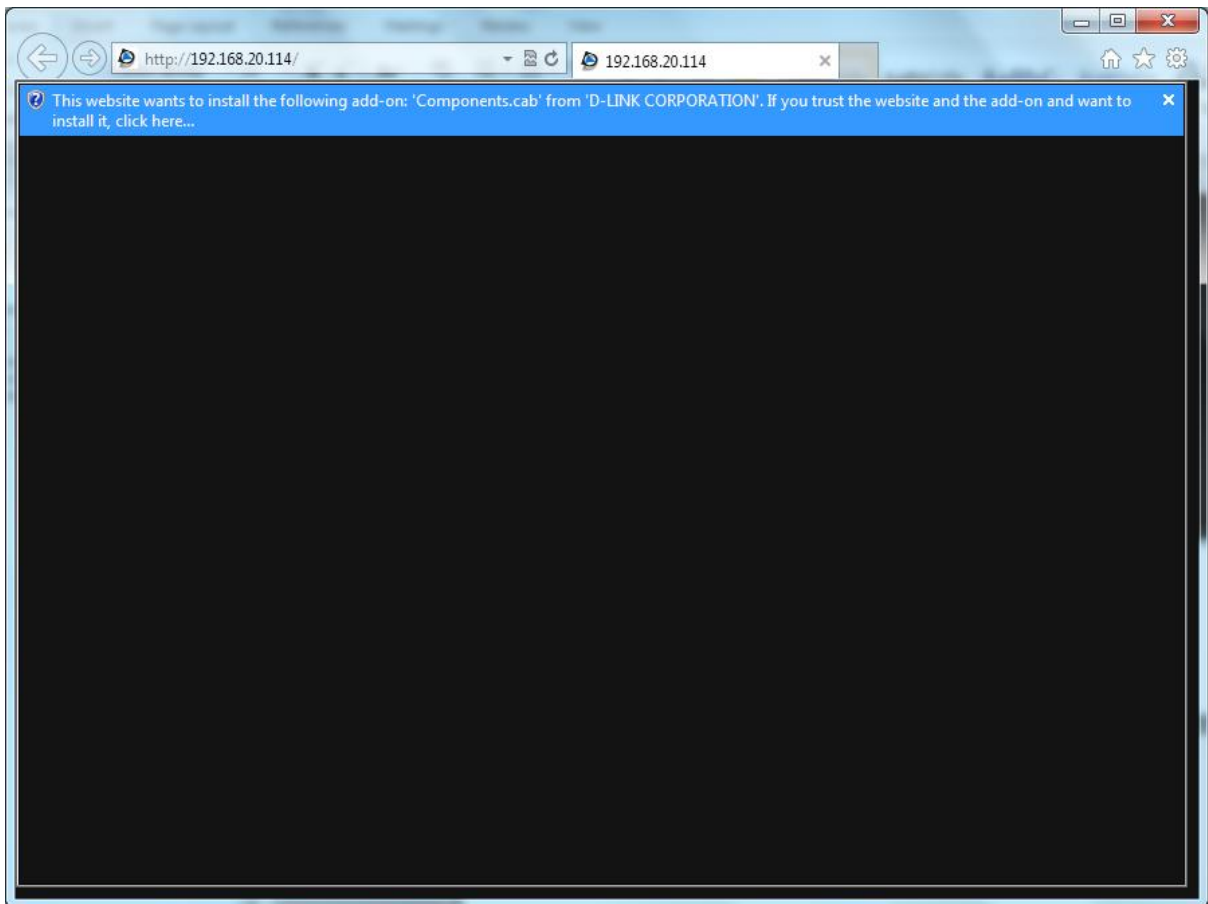


The image shows a product page for a D-Link 6-BAY NETWORK VIDEO RECORDER. On the left is a navigation menu with the following items: Setup Wizard, View QIG, View Manual, Adobe® Reader®, and Support. The main area features a photograph of the device, which is a black and silver rack-mountable unit with a control panel on the front. The top right of the page is labeled "6-BAY NETWORK VIDEO RECORDER". At the bottom left is an "Exit" button, and at the bottom right is the text "DNR-2060-08P | Business Class Networking".

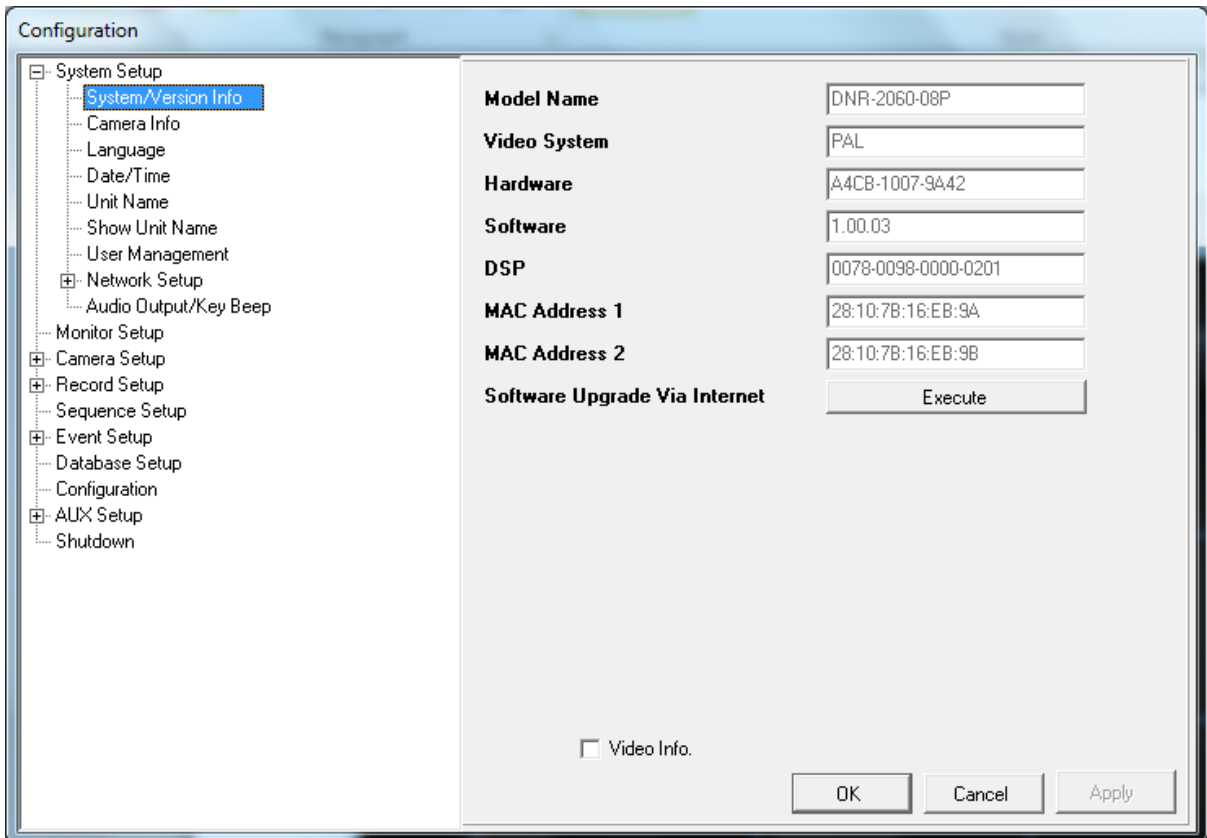
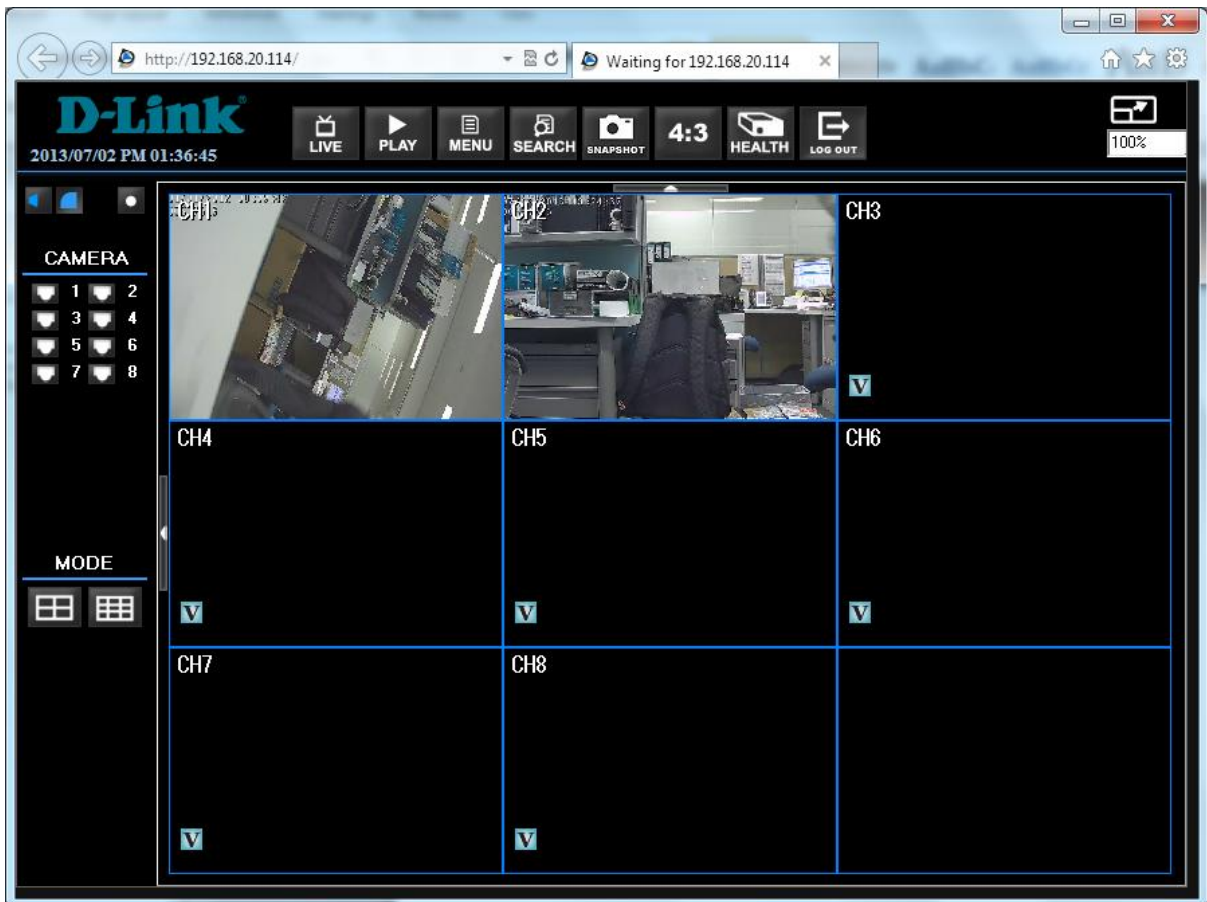


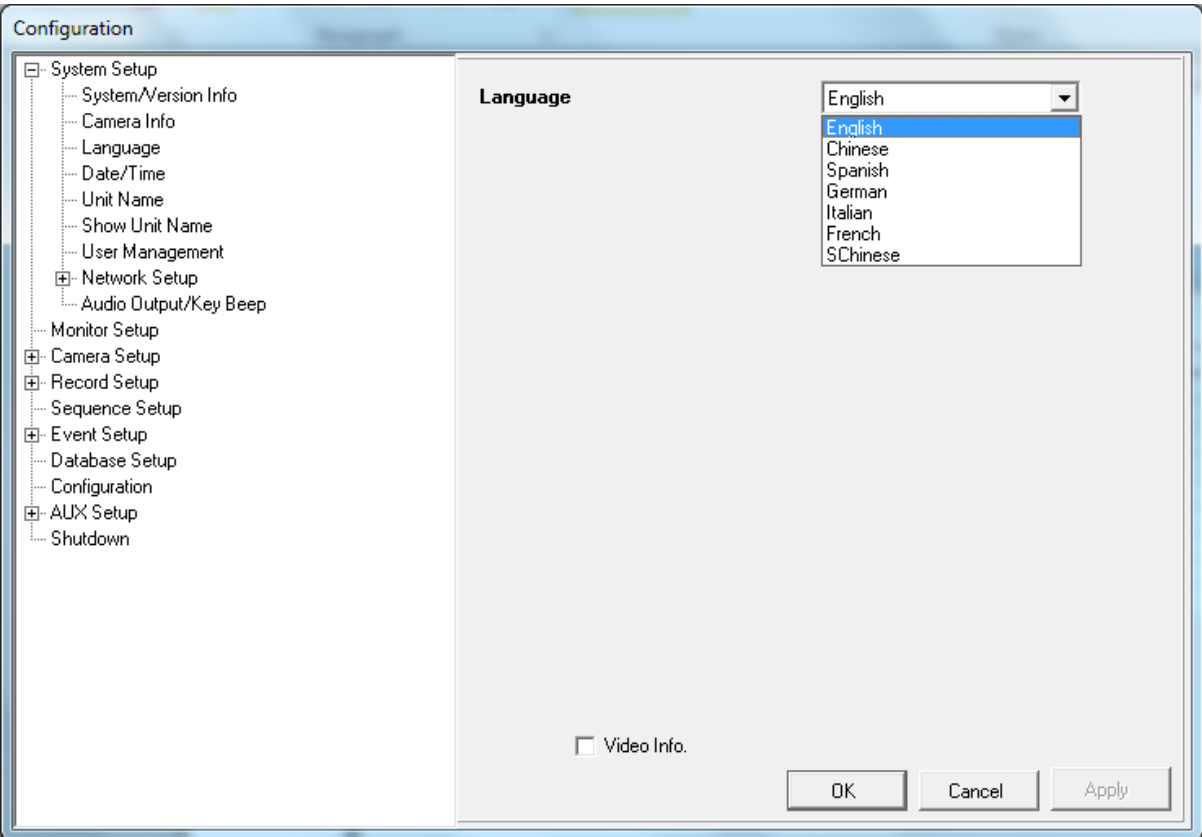
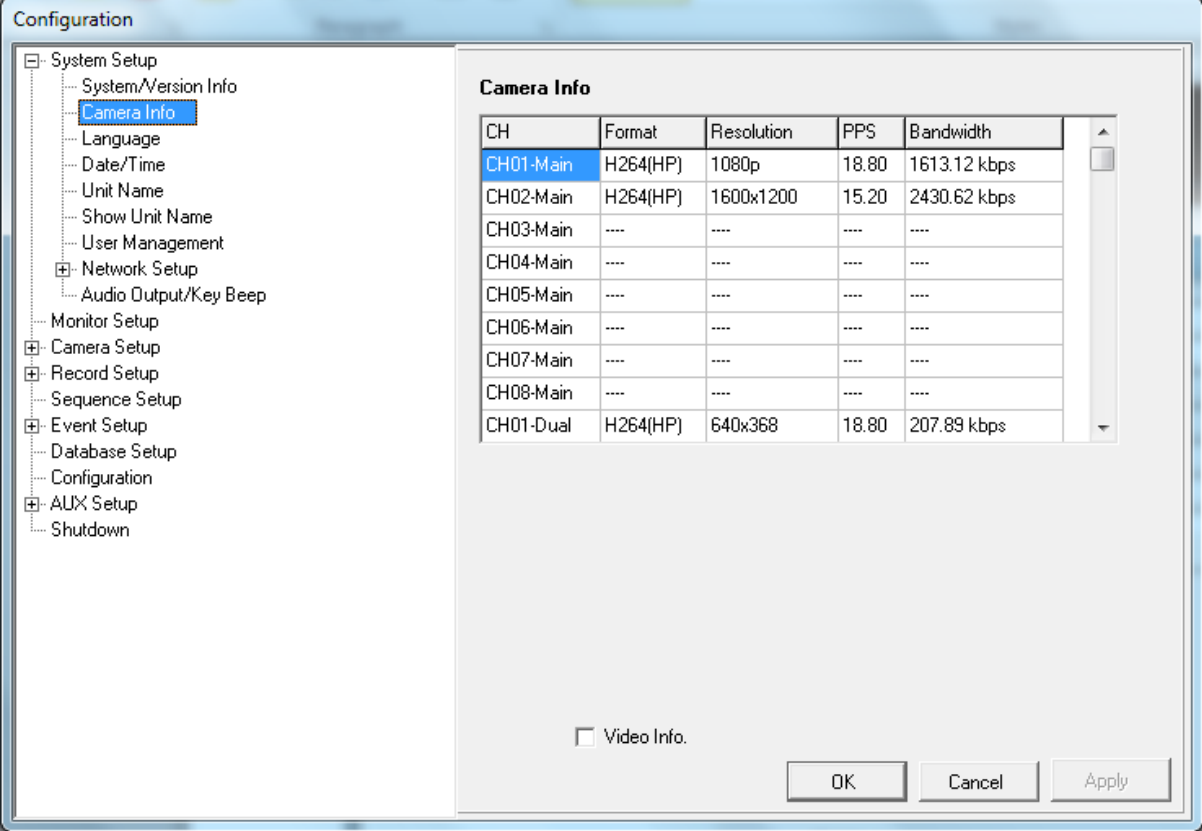
The image shows a screenshot of the "InstallShield Wizard" window. The title bar reads "InstallShield Wizard". The window contains a blue sidebar with a white icon of a sailboat. The main text area says: "Welcome to the InstallShield Wizard for Setup Wizard SE". Below this, it reads: "The InstallShield® Wizard will install Setup Wizard SE on your computer. To continue, click Next." At the bottom of the window are three buttons: "< Back", "Next >" (which is highlighted with a dotted border), and "Cancel".

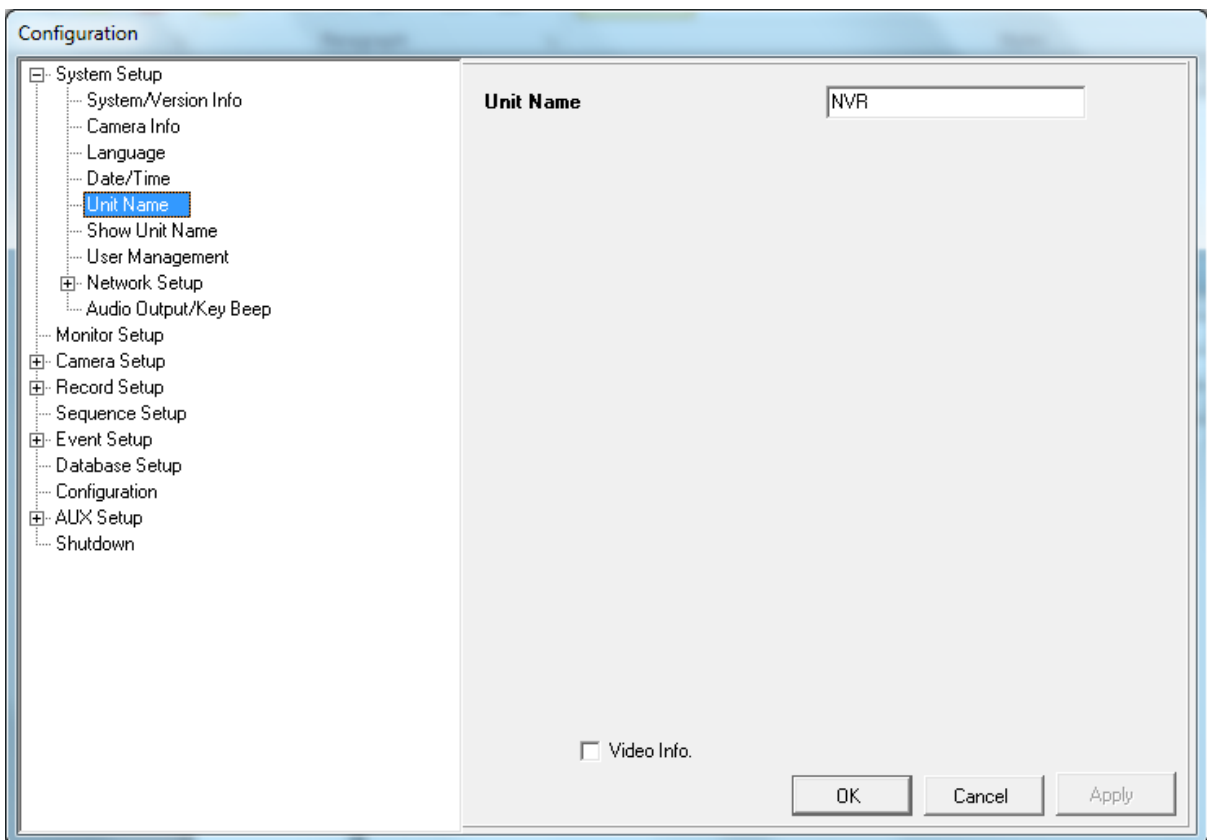
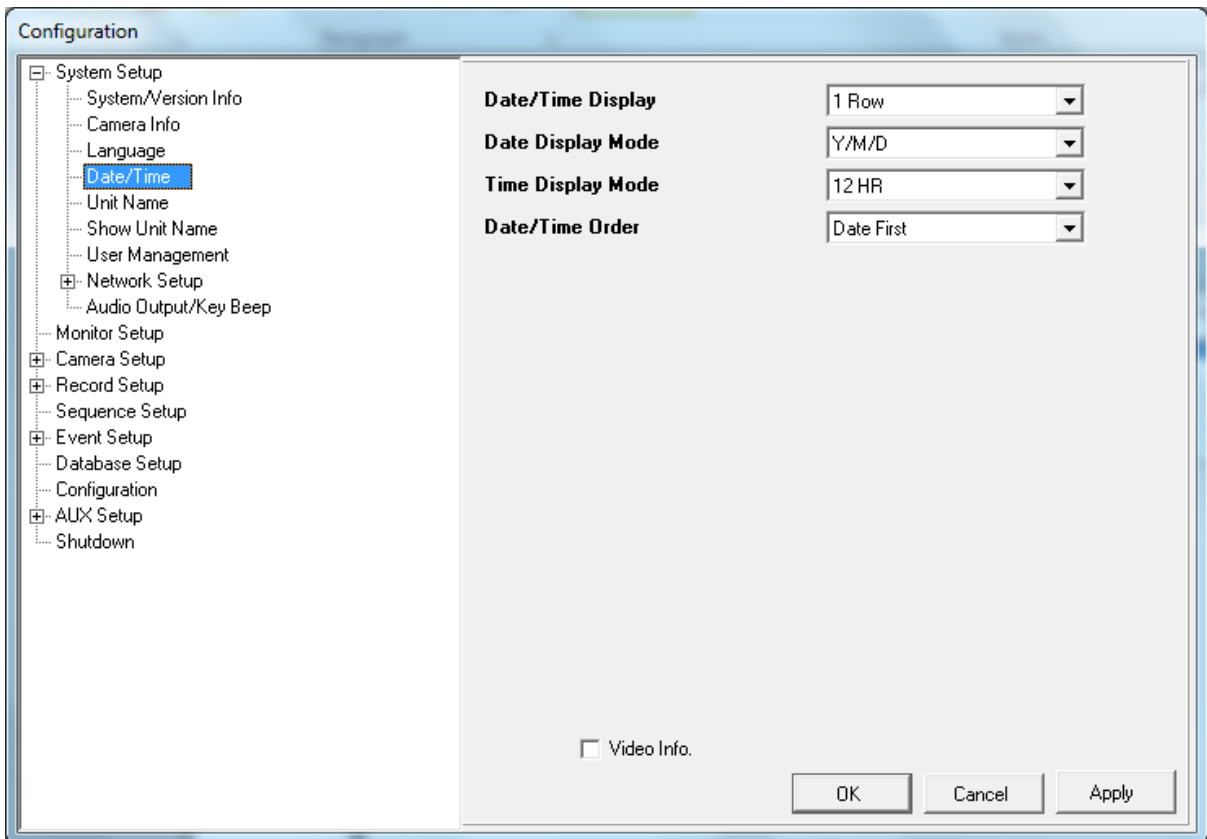


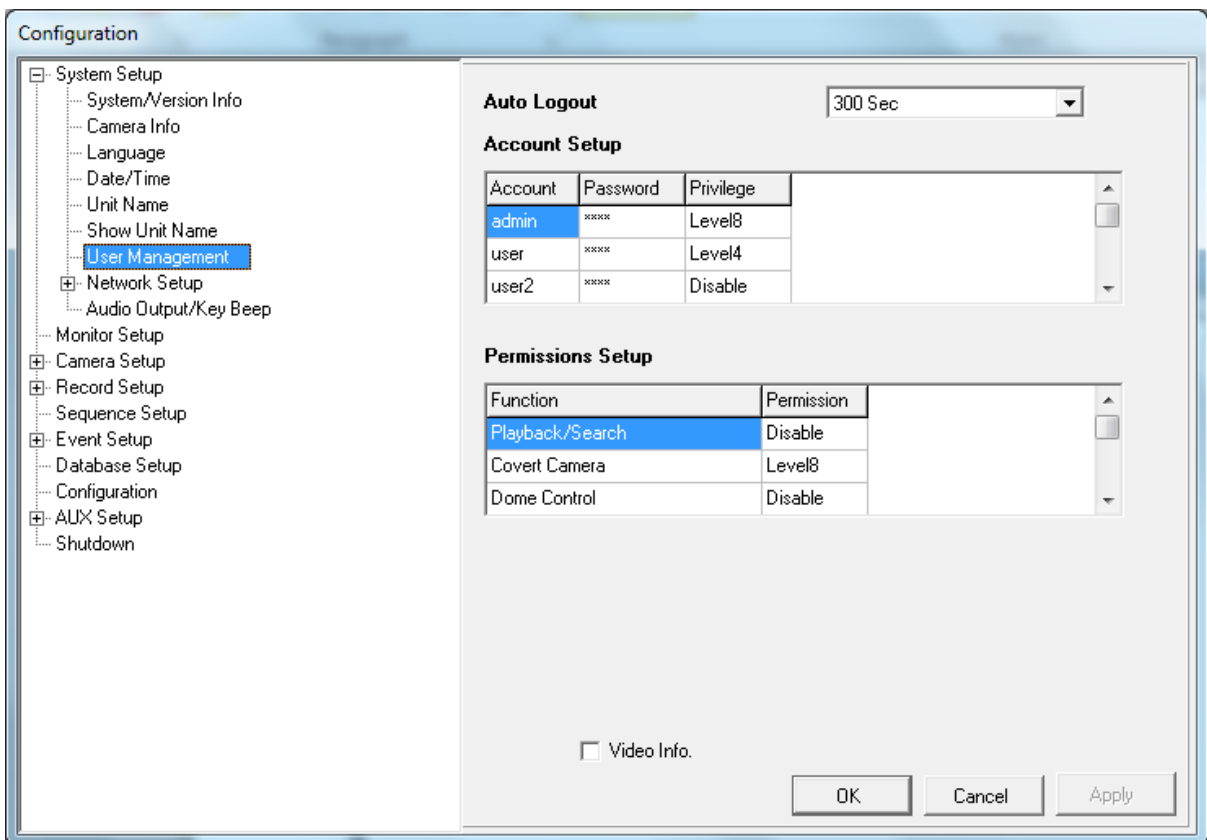
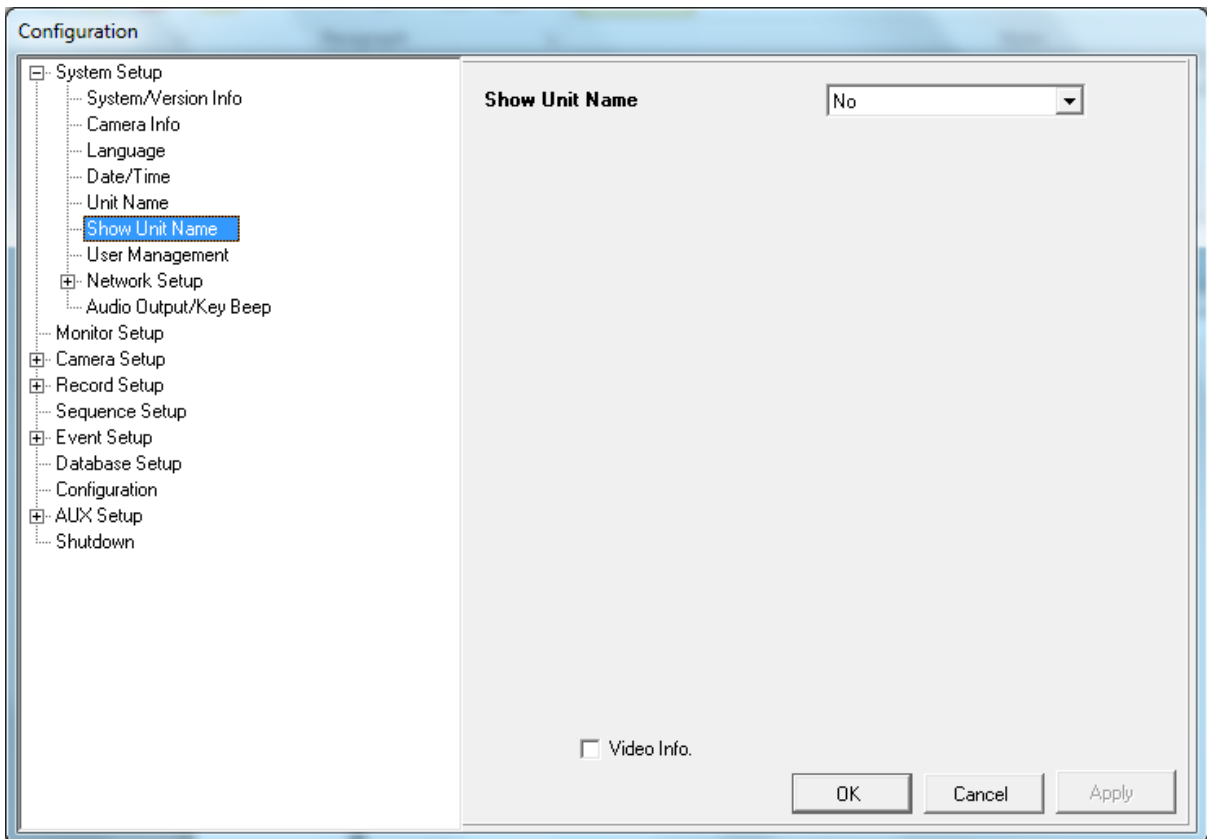


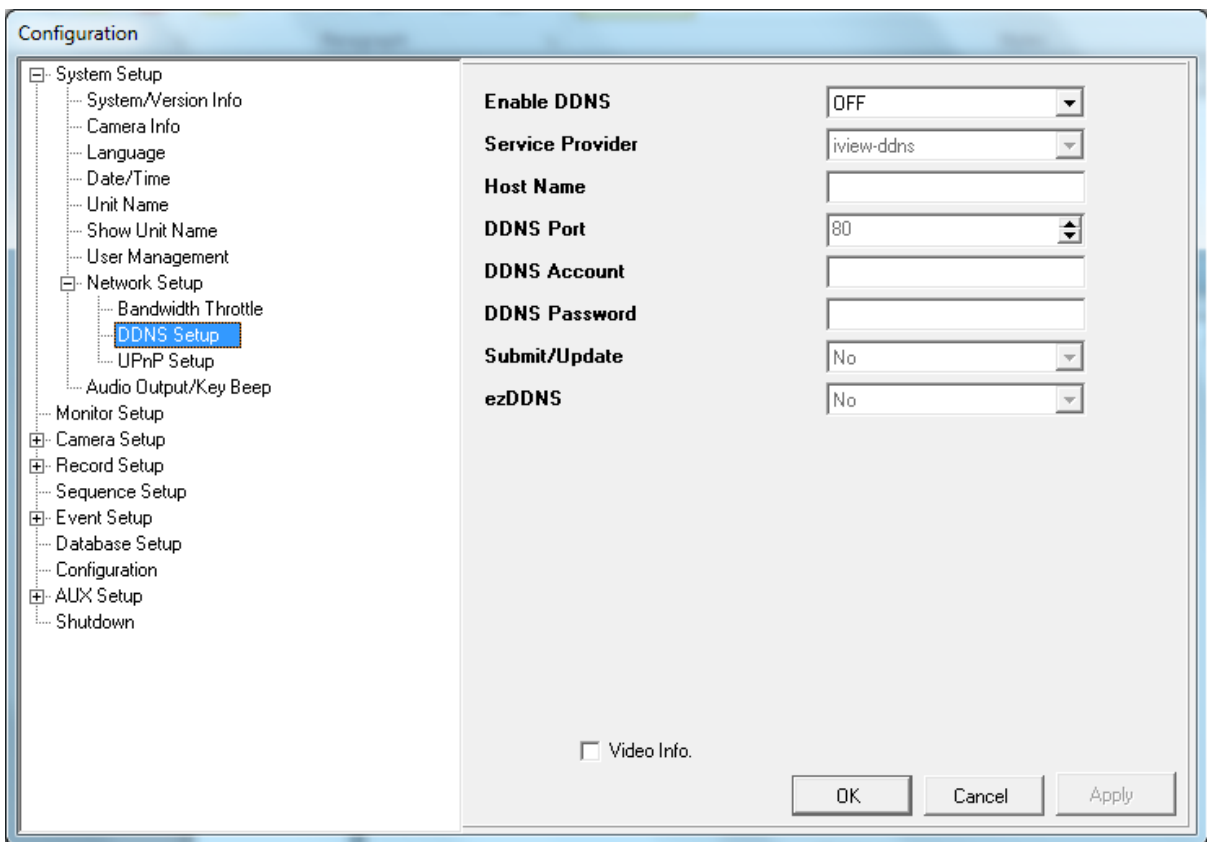
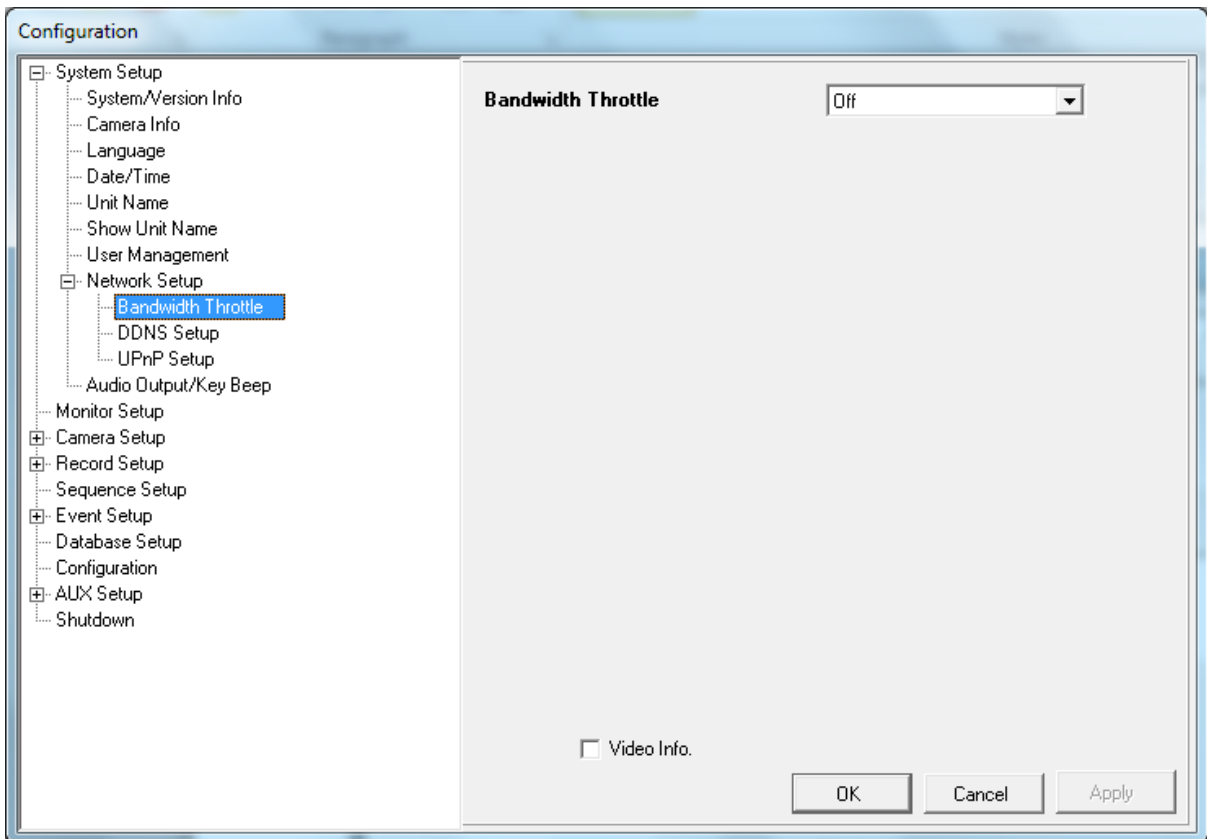
admin / 1234

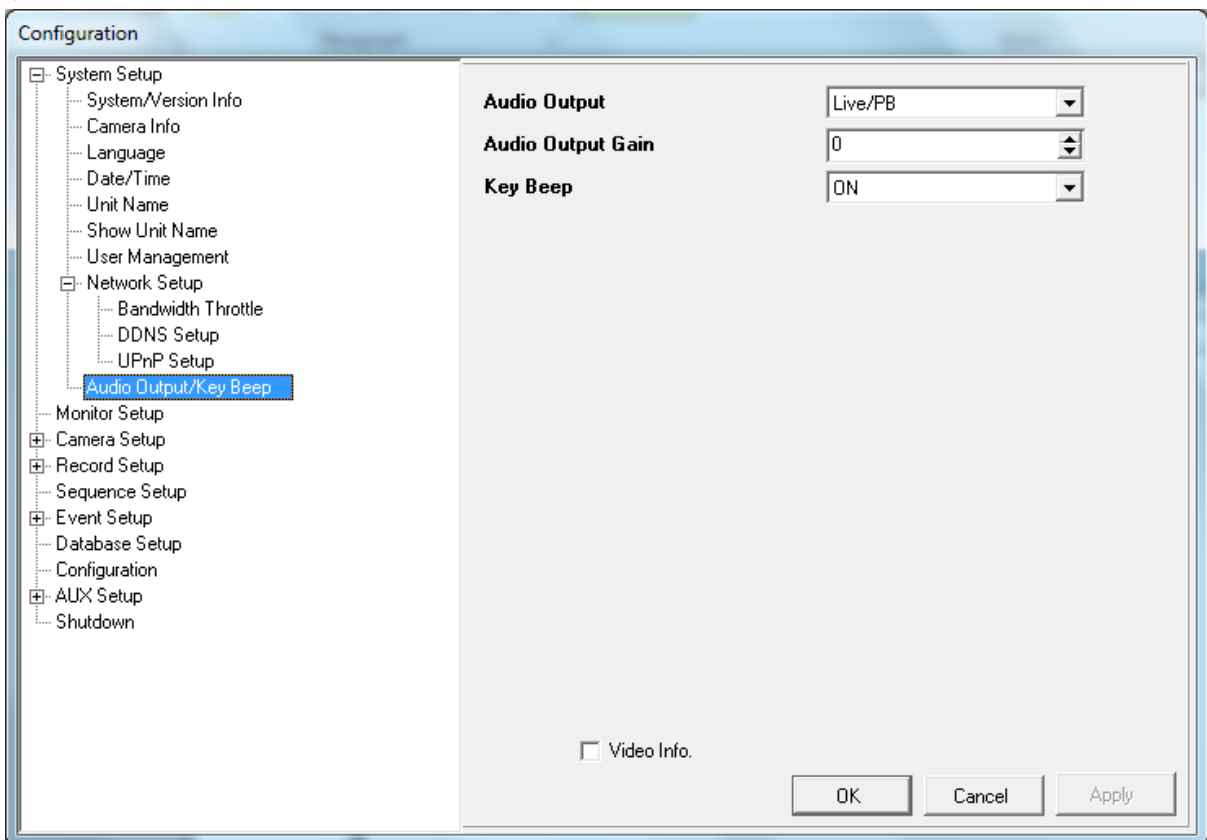
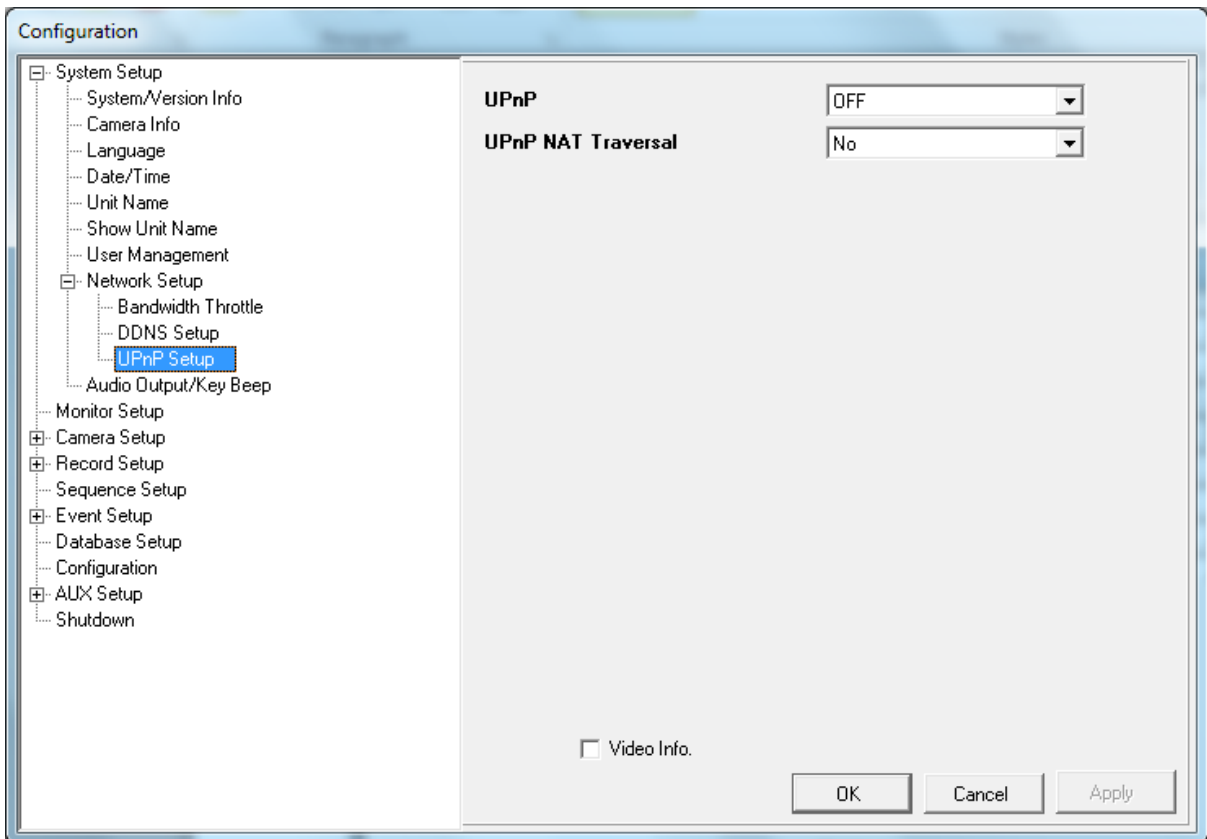


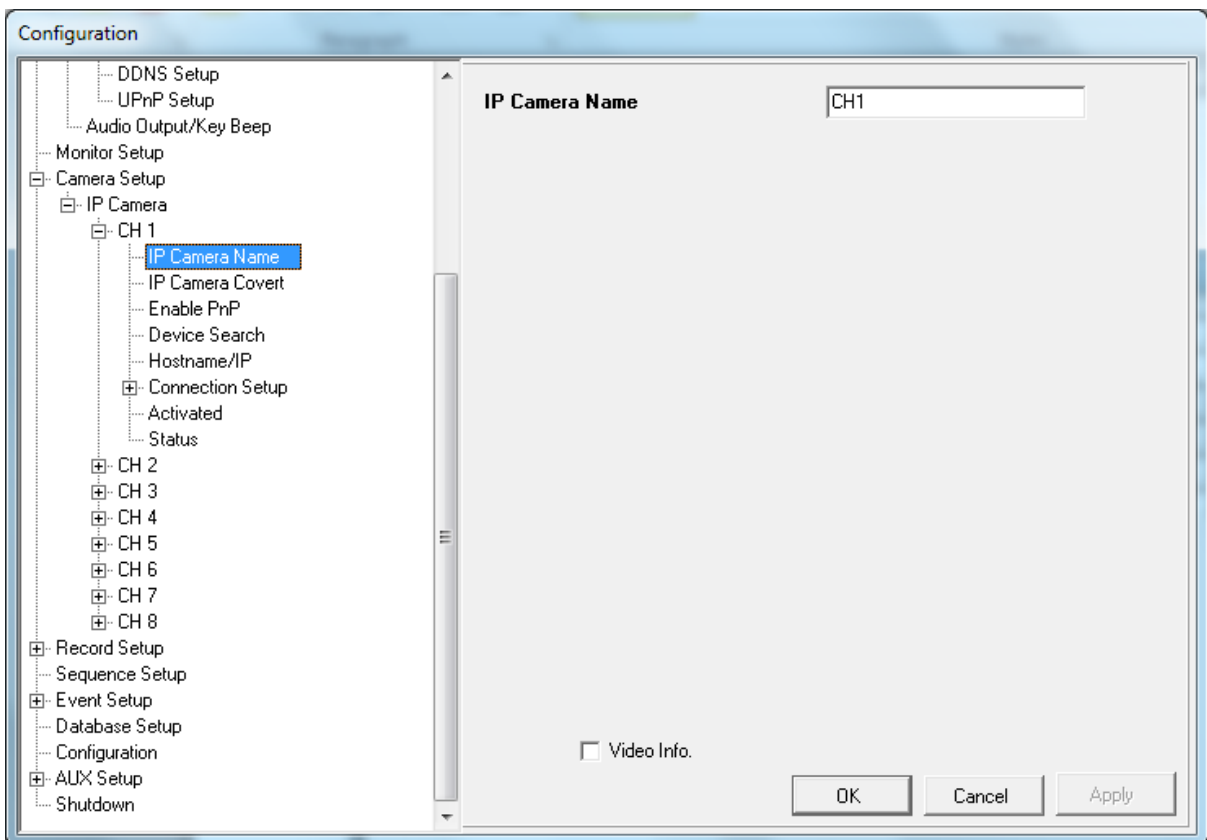
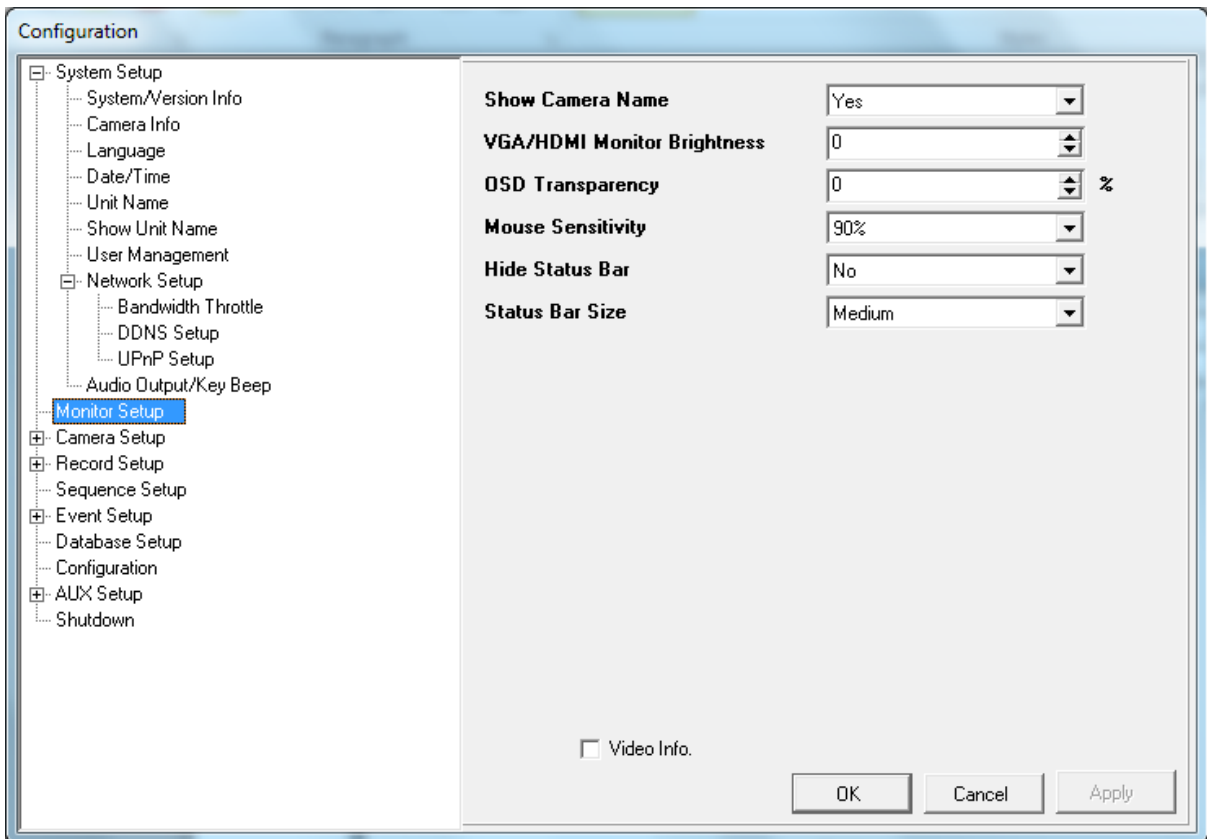


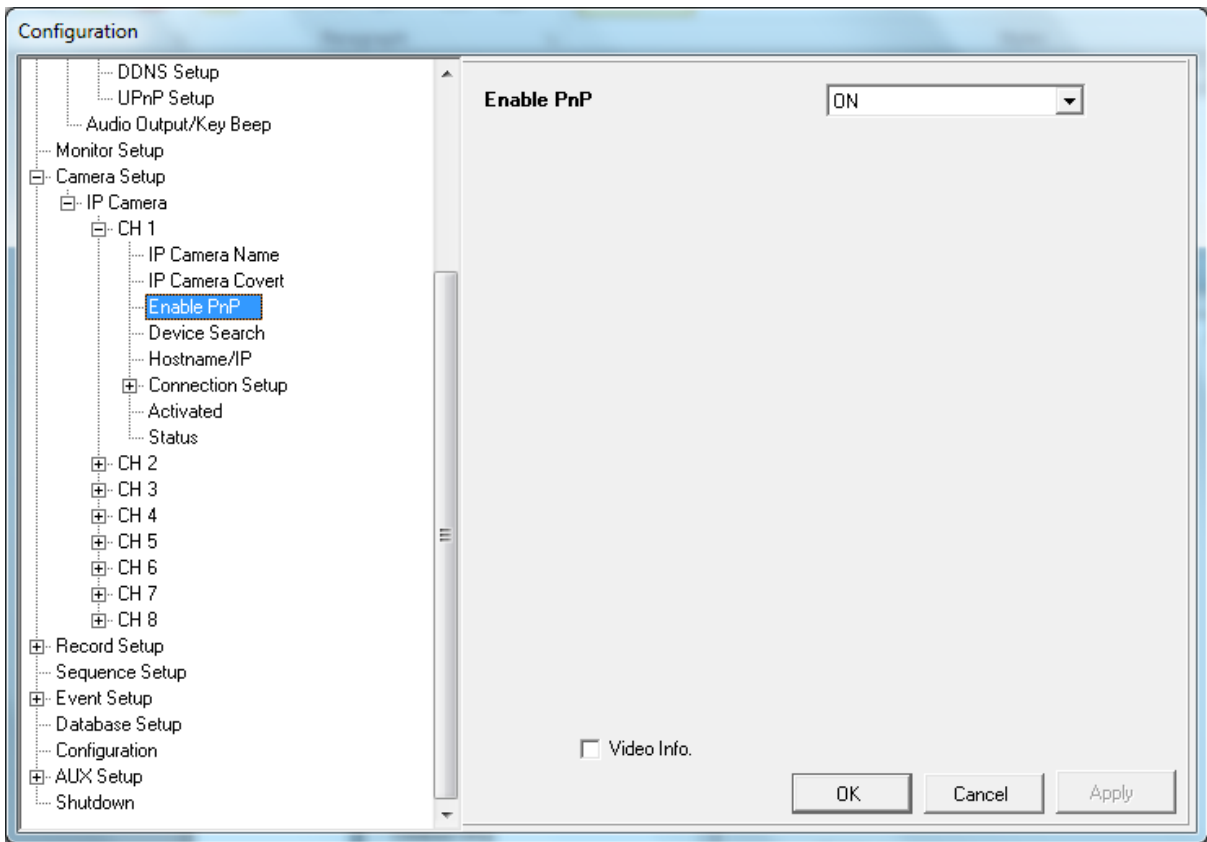
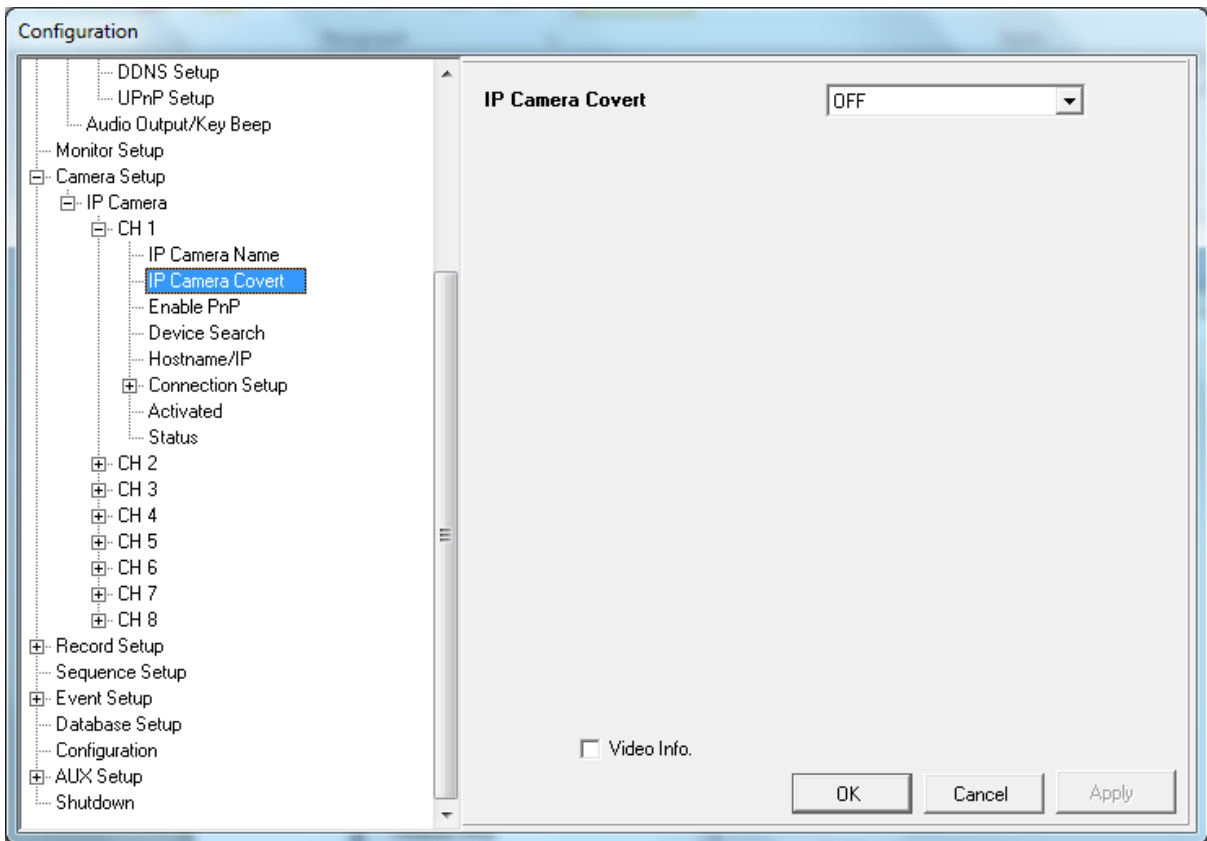


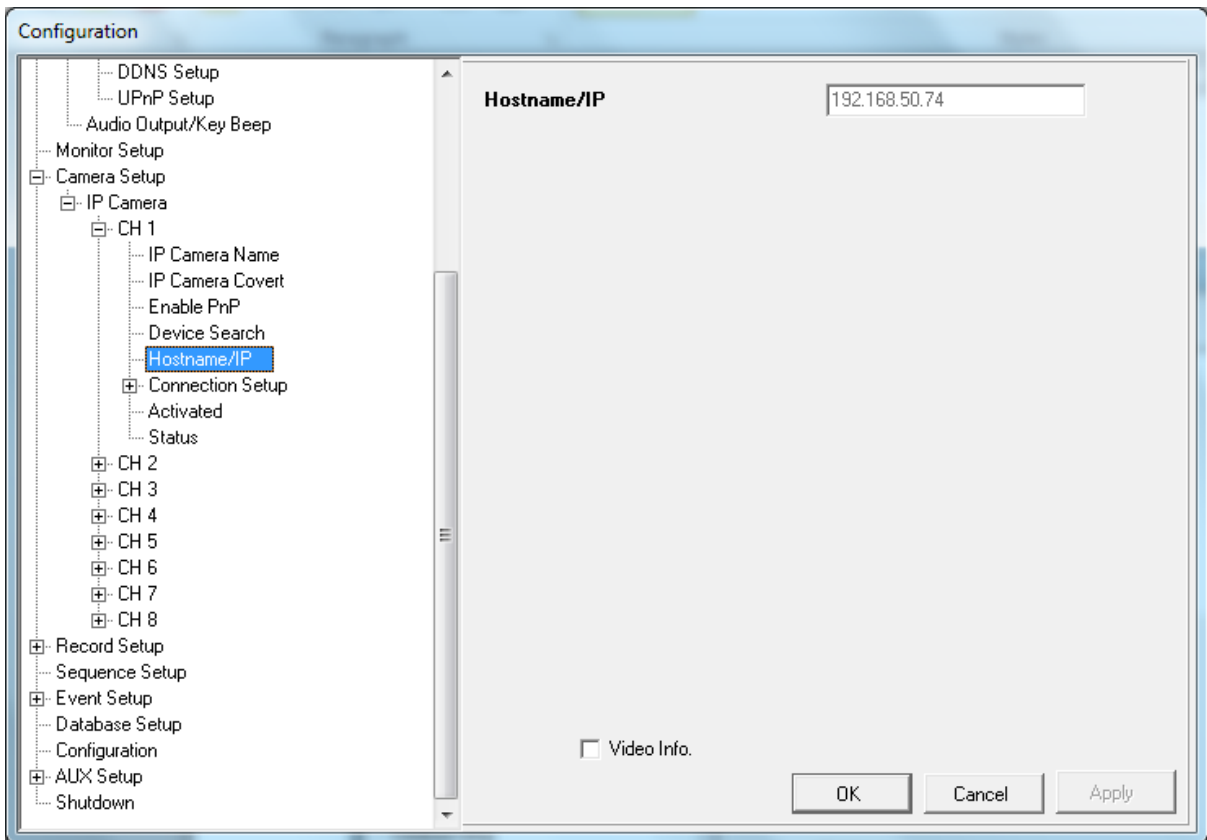
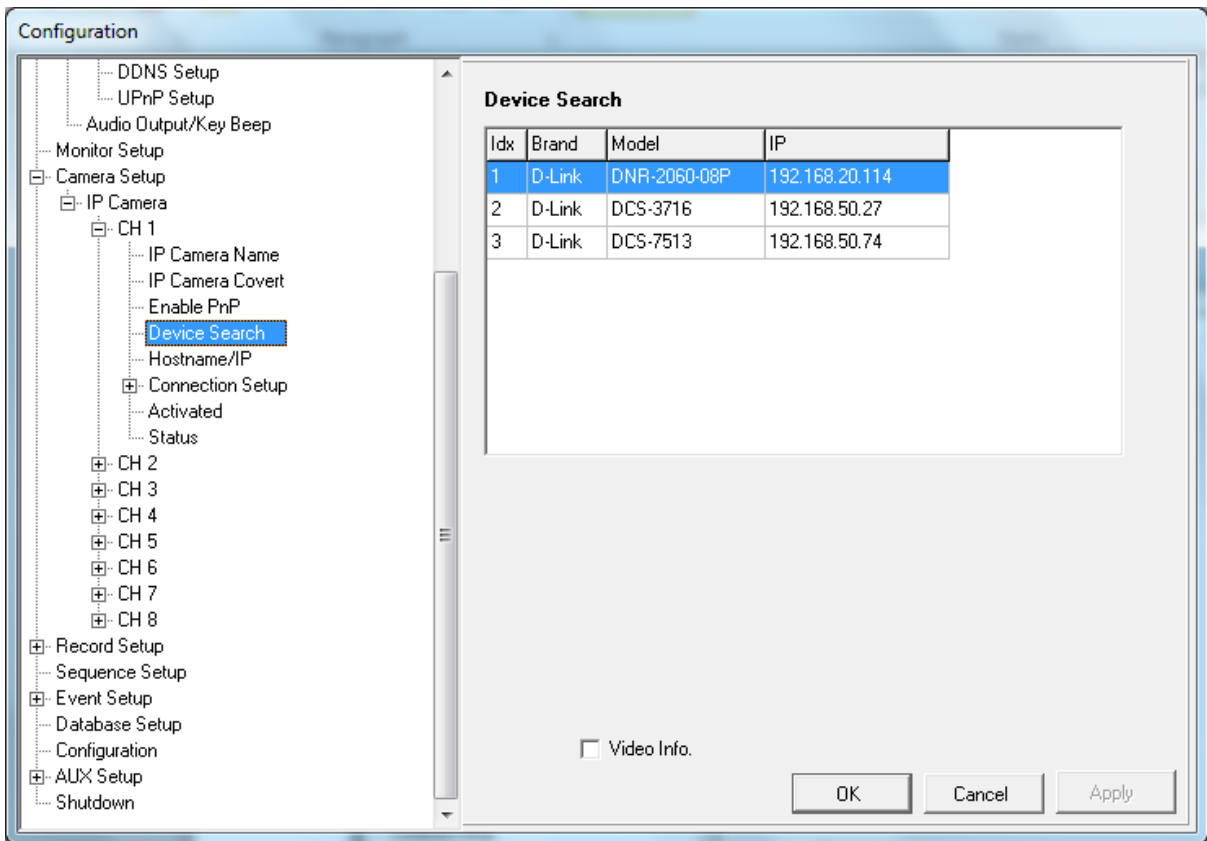


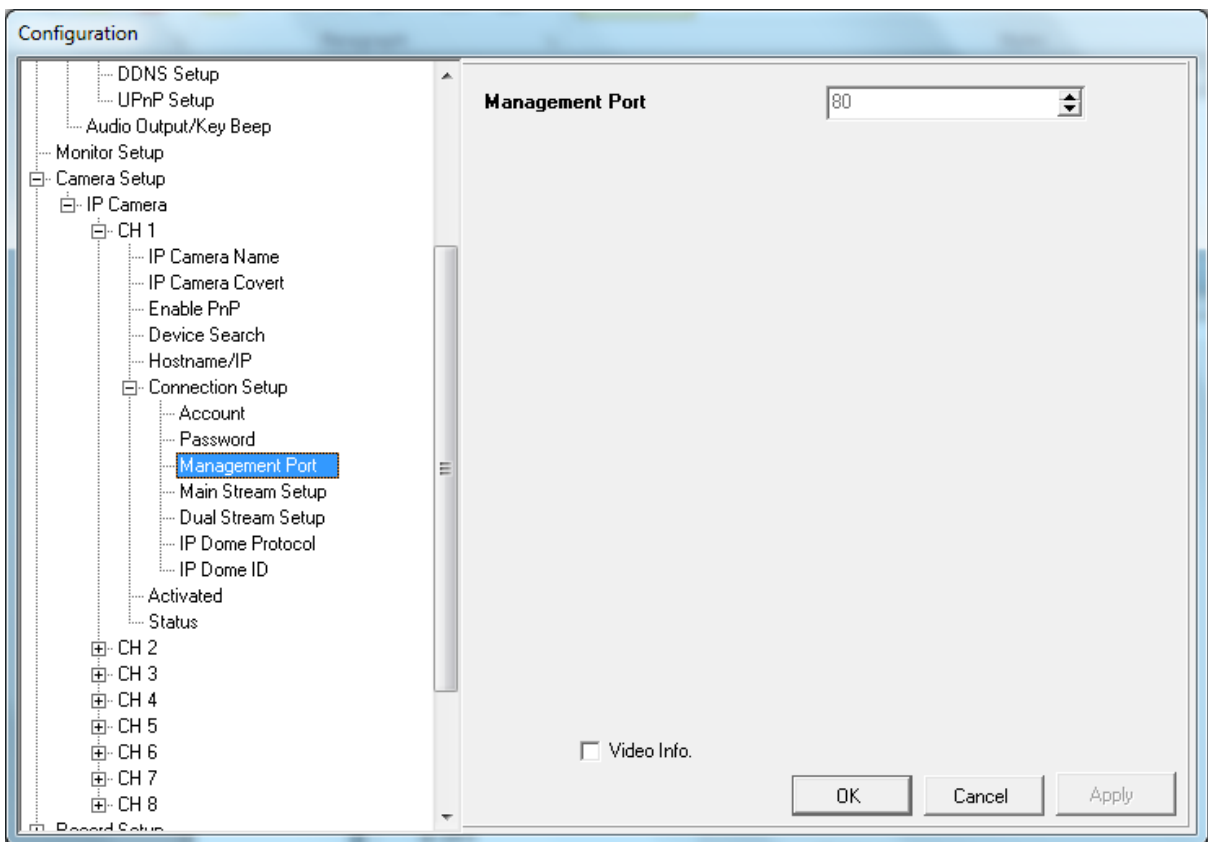
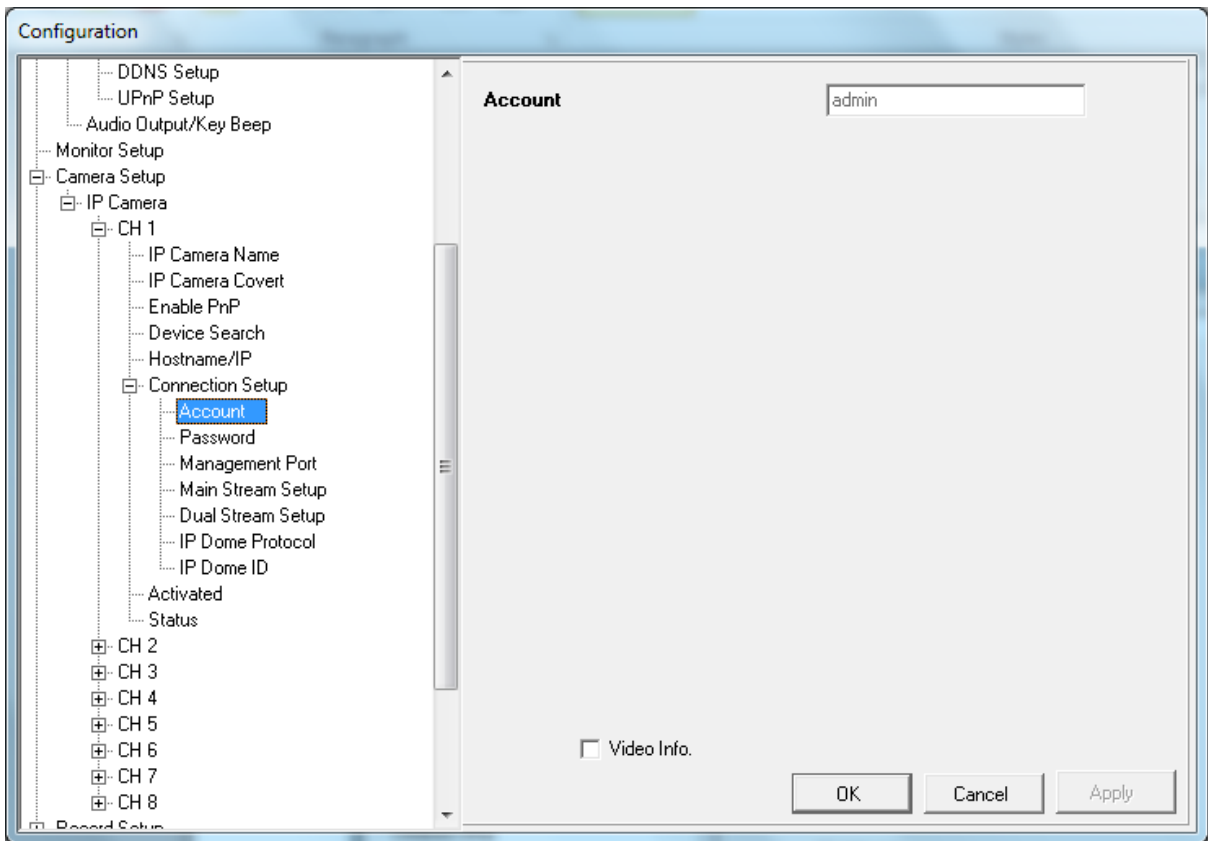


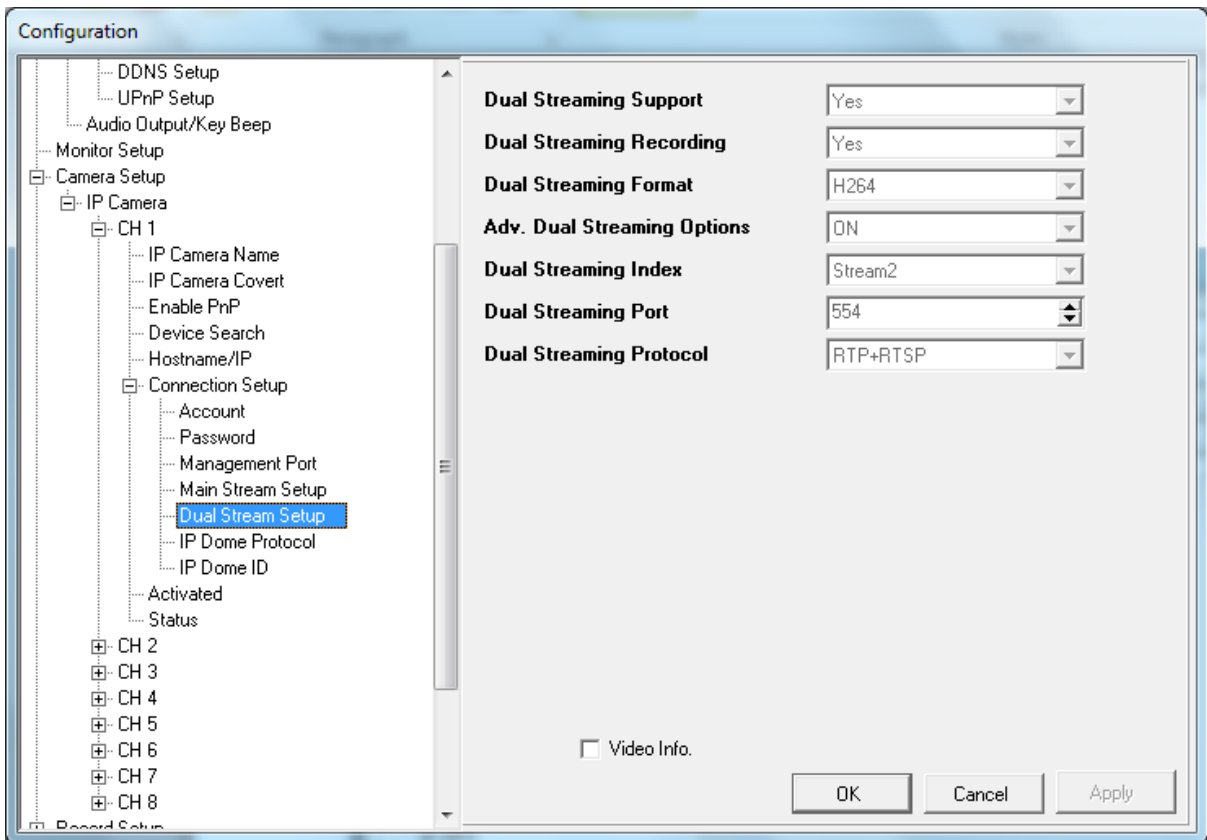
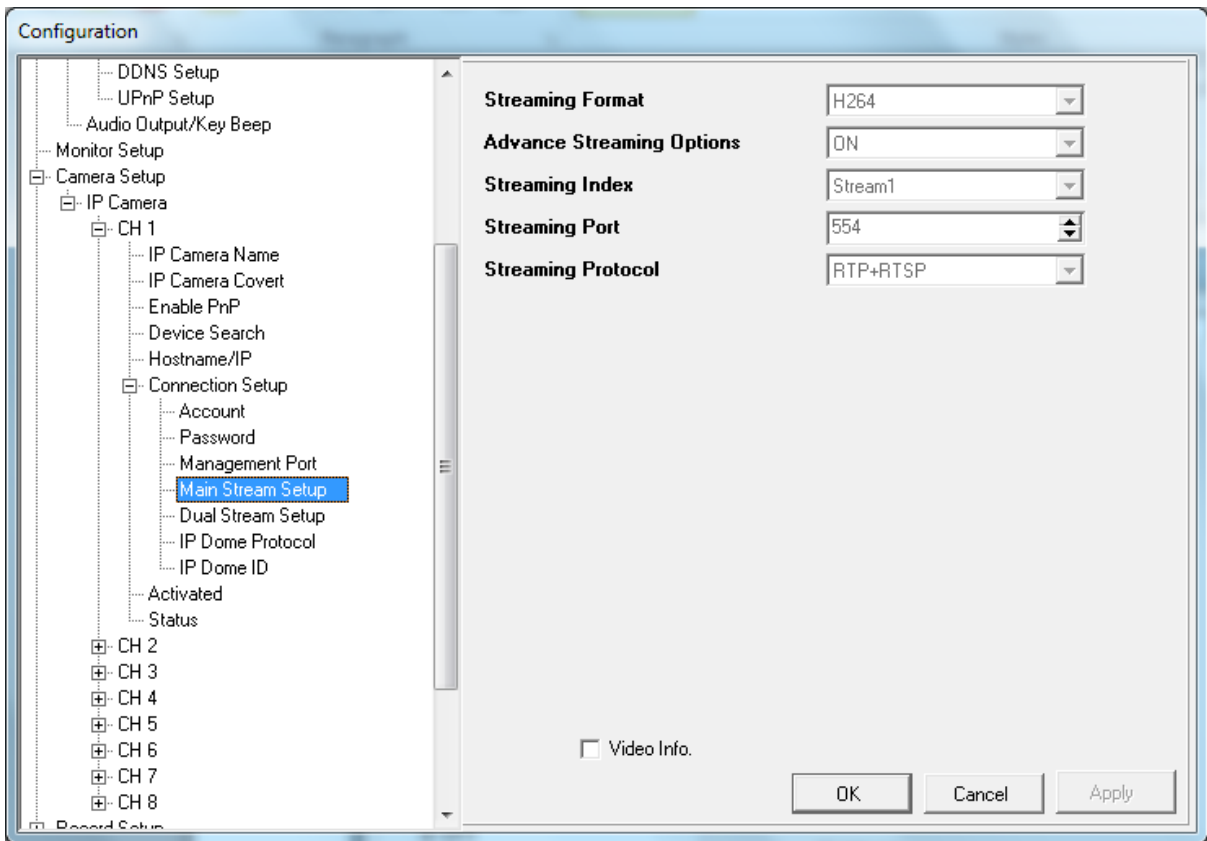


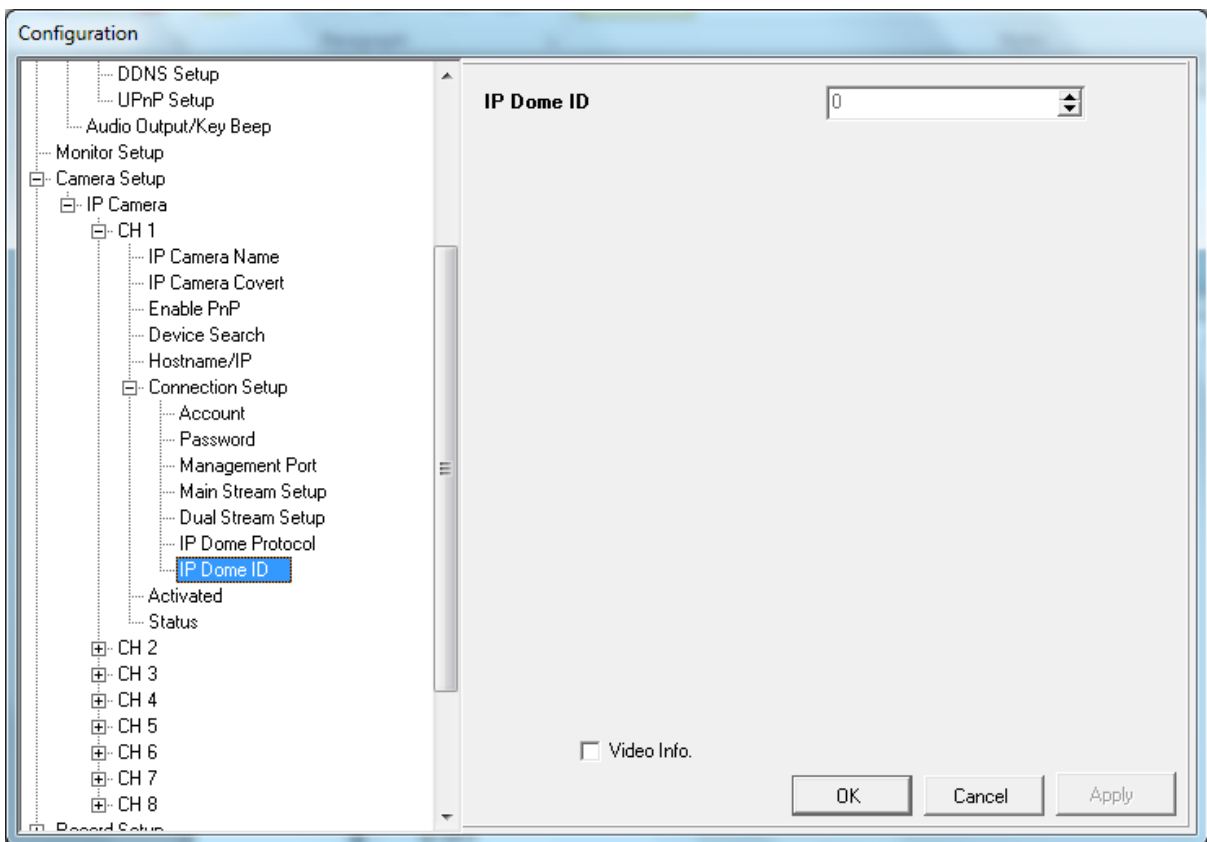
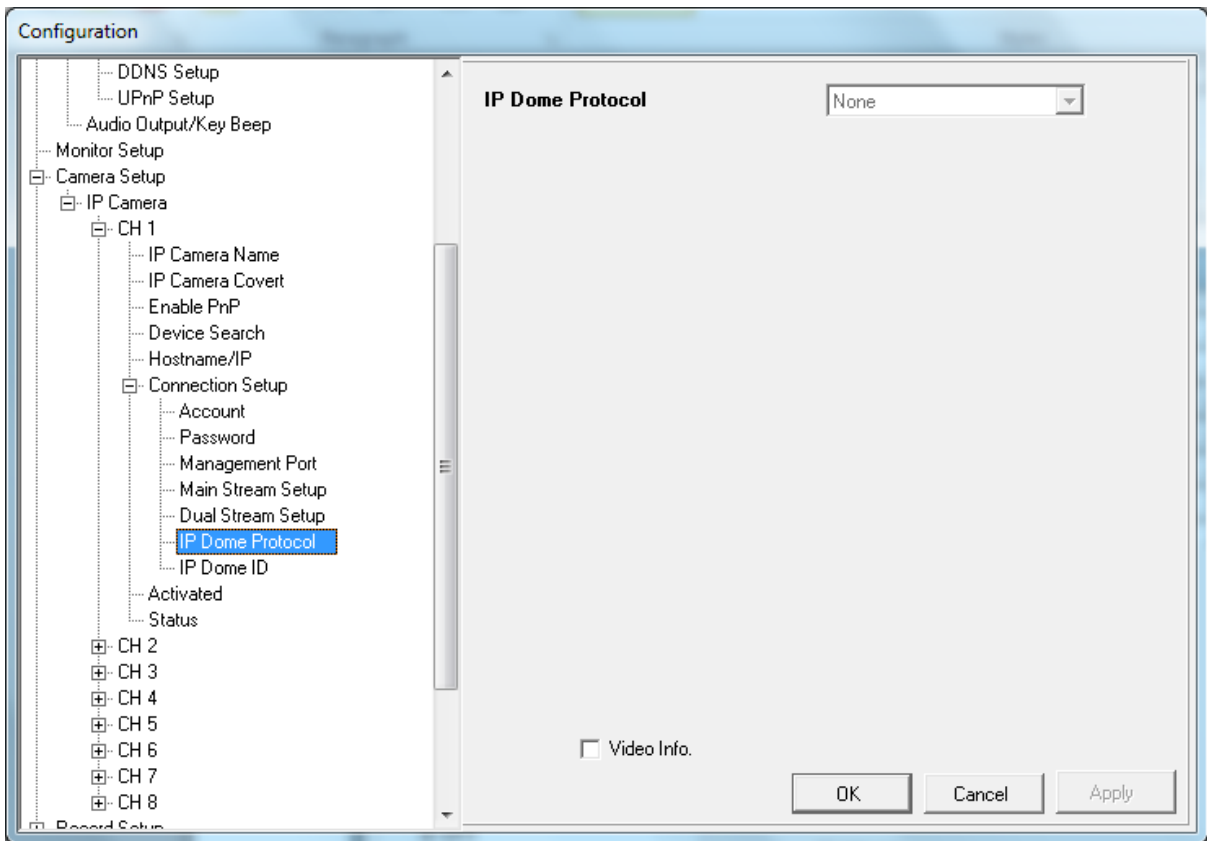


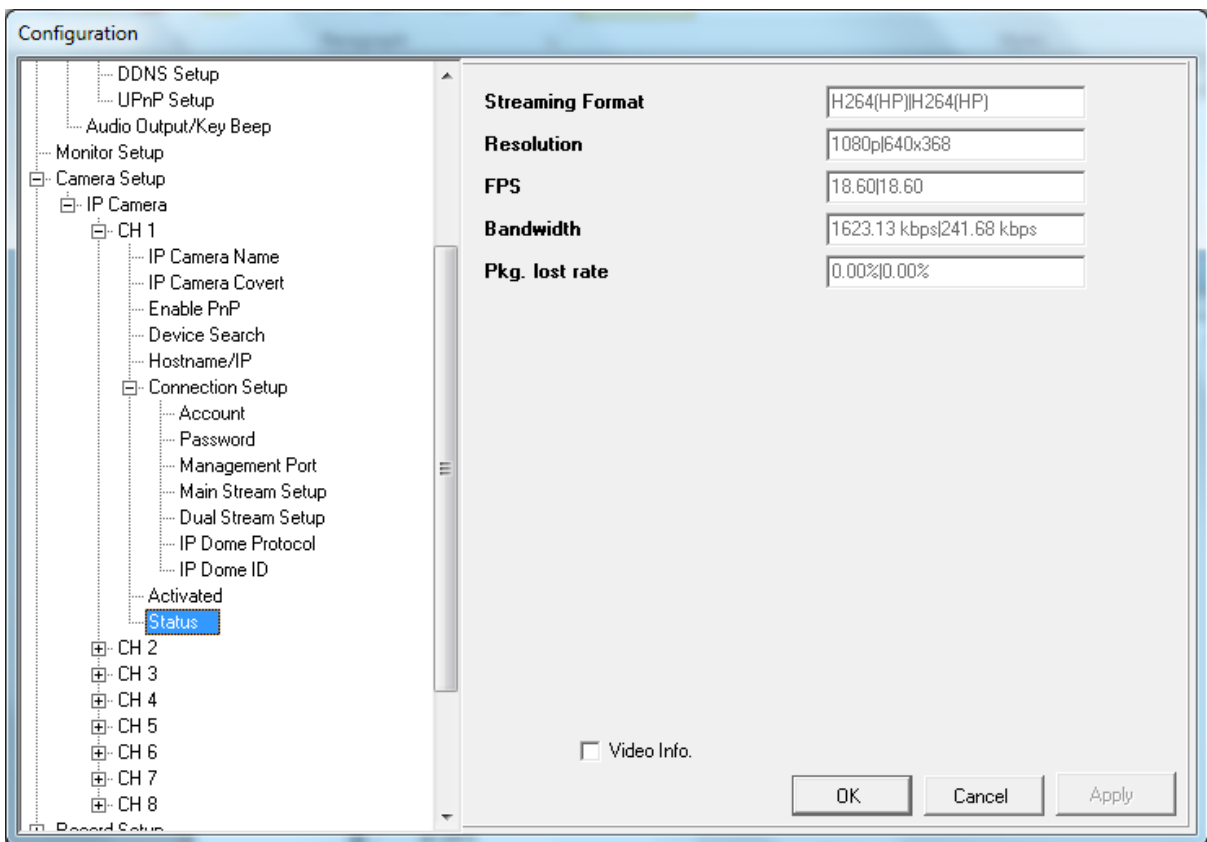
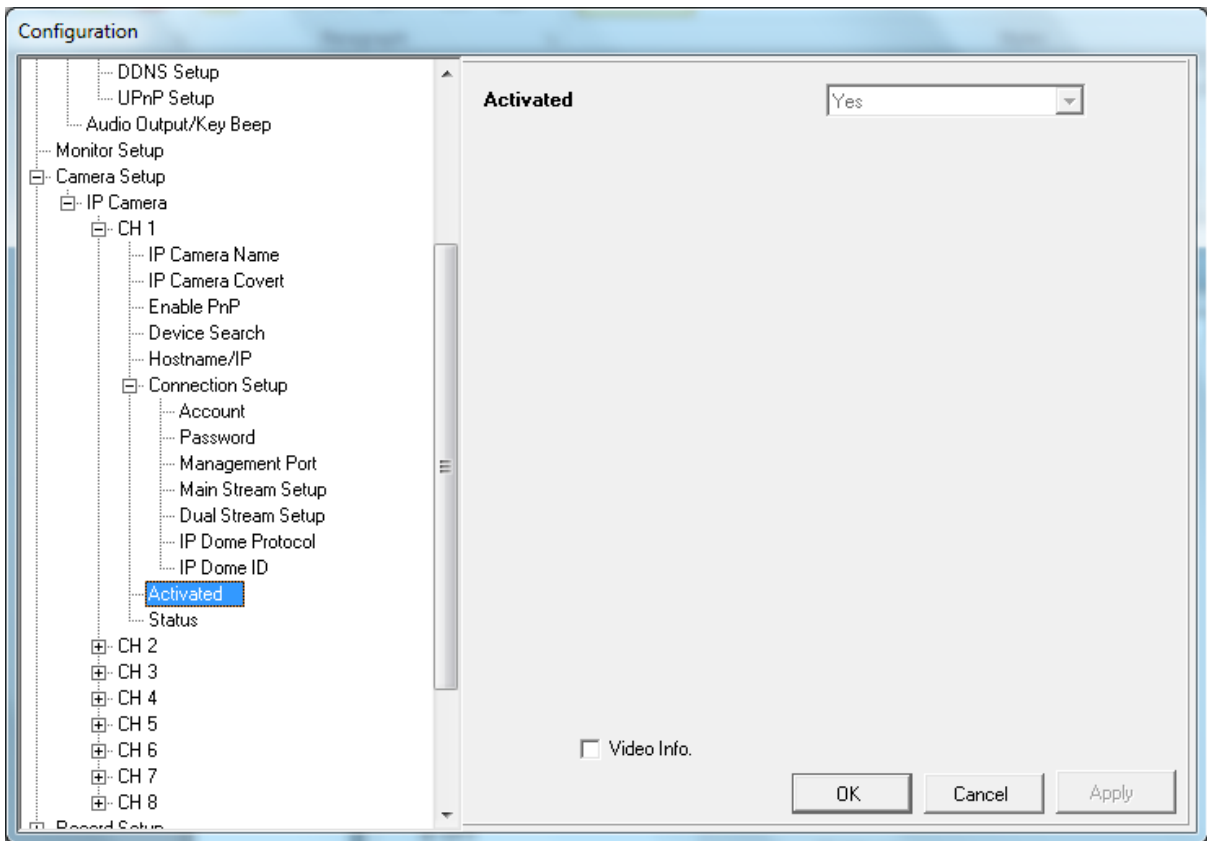


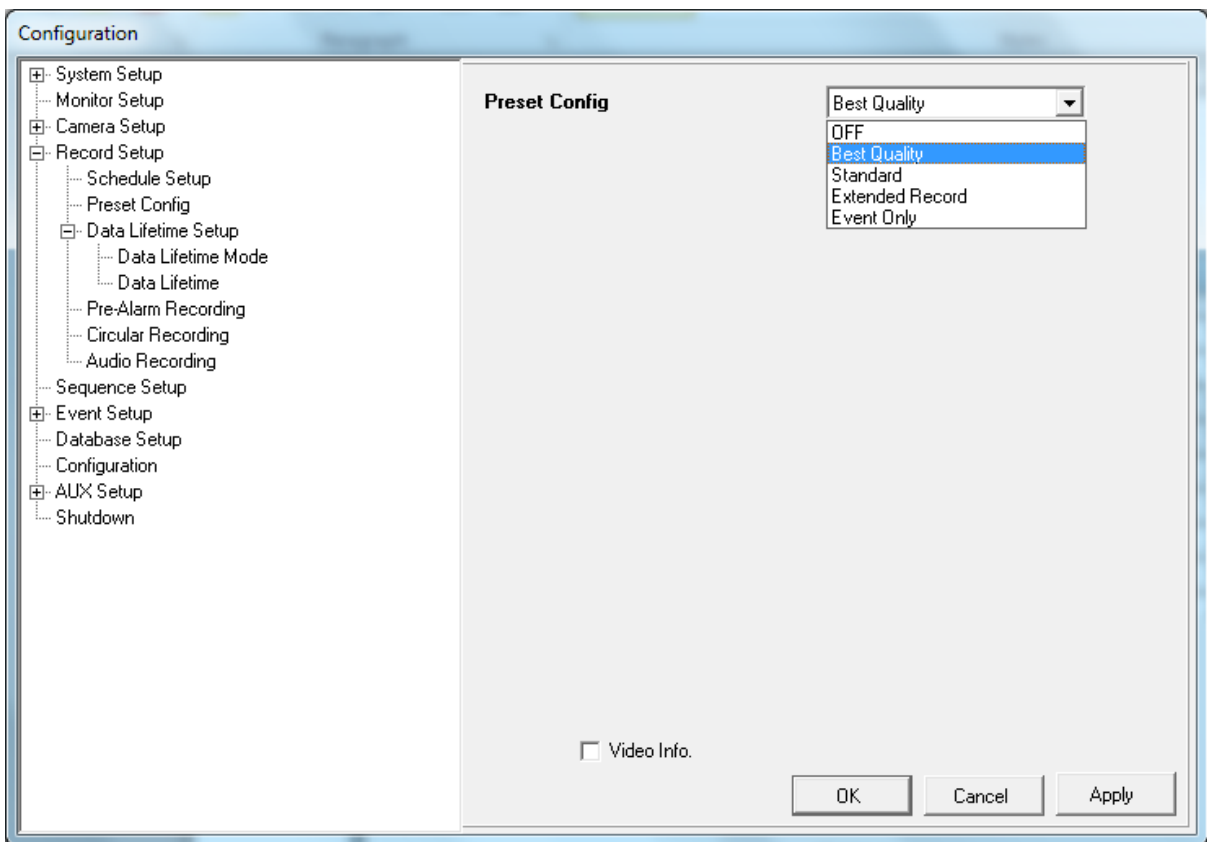
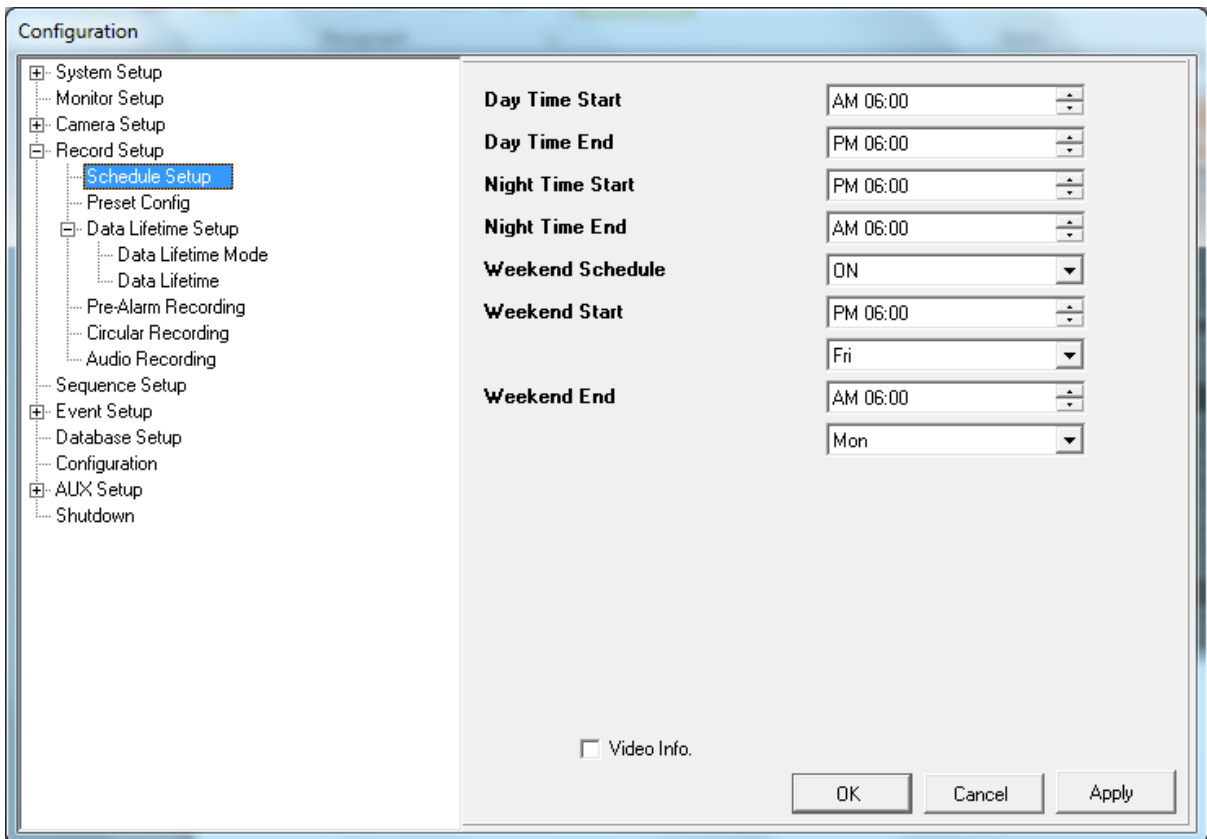


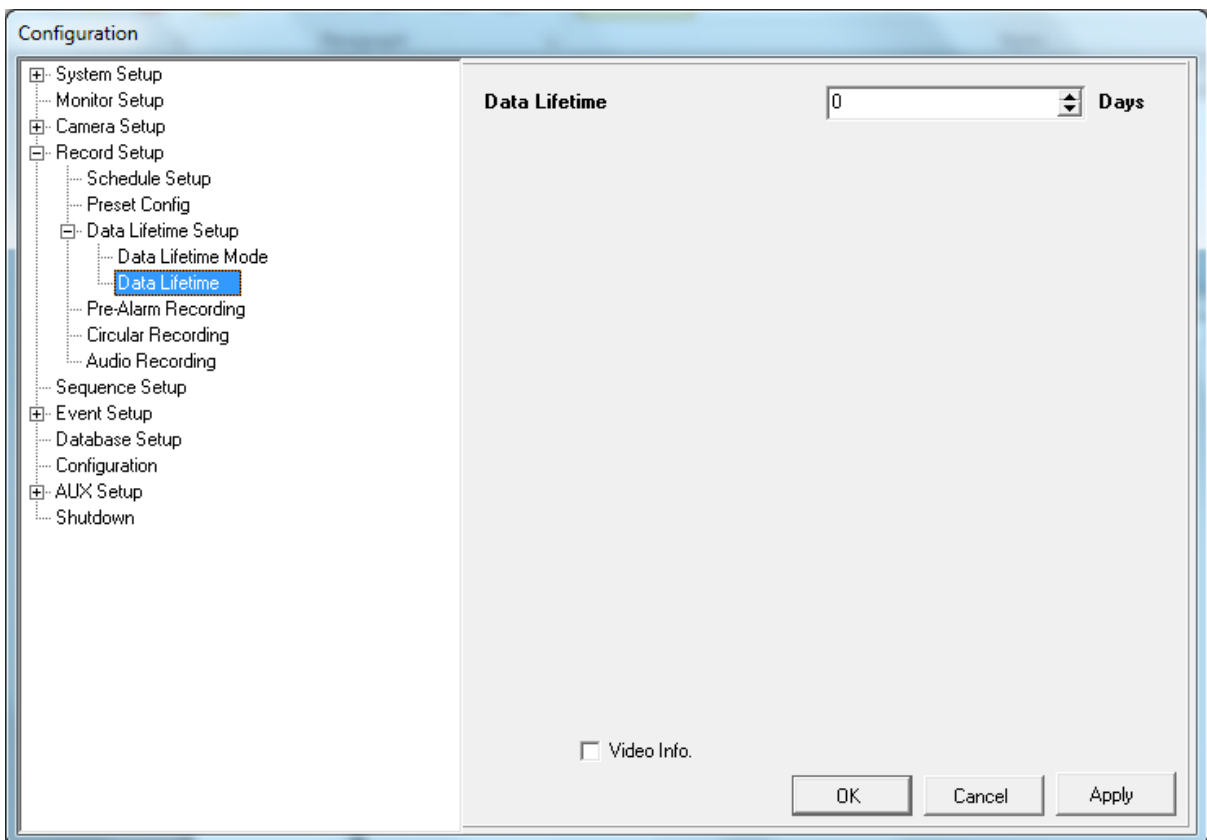
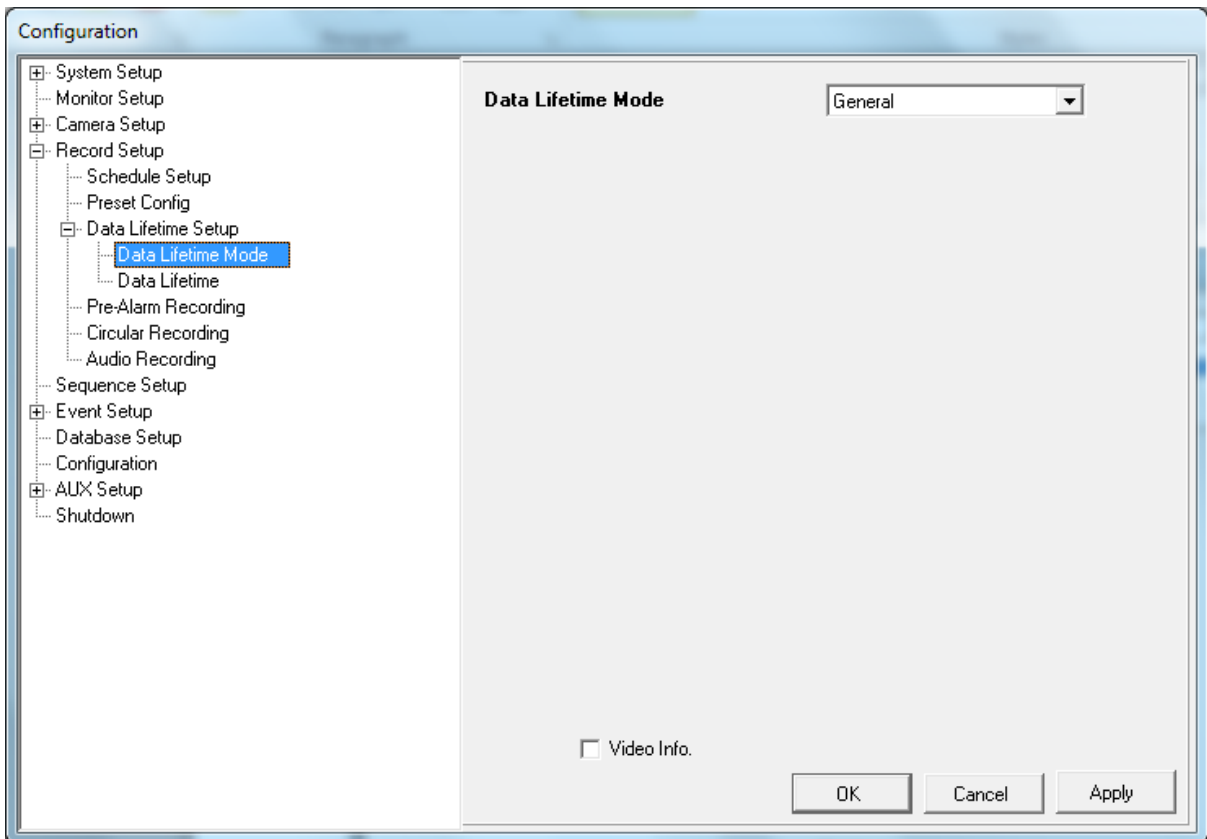


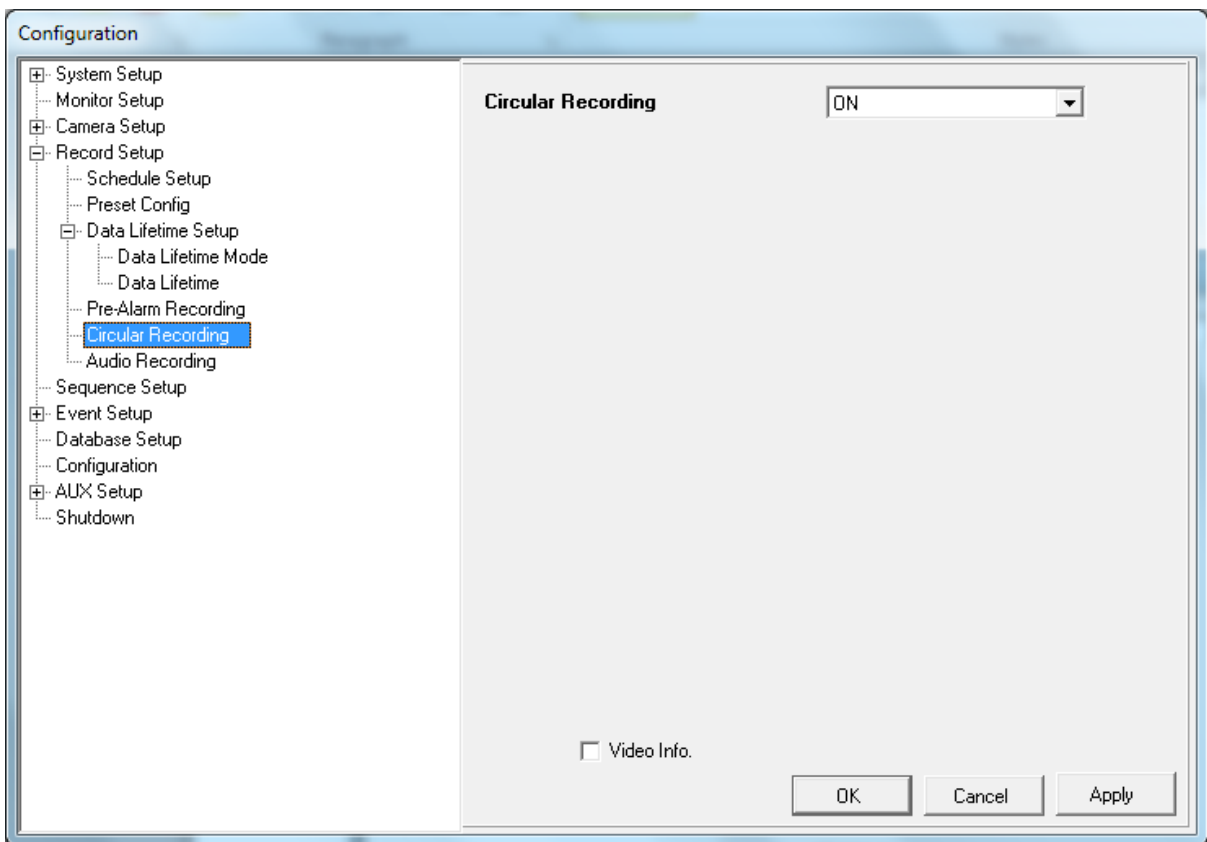
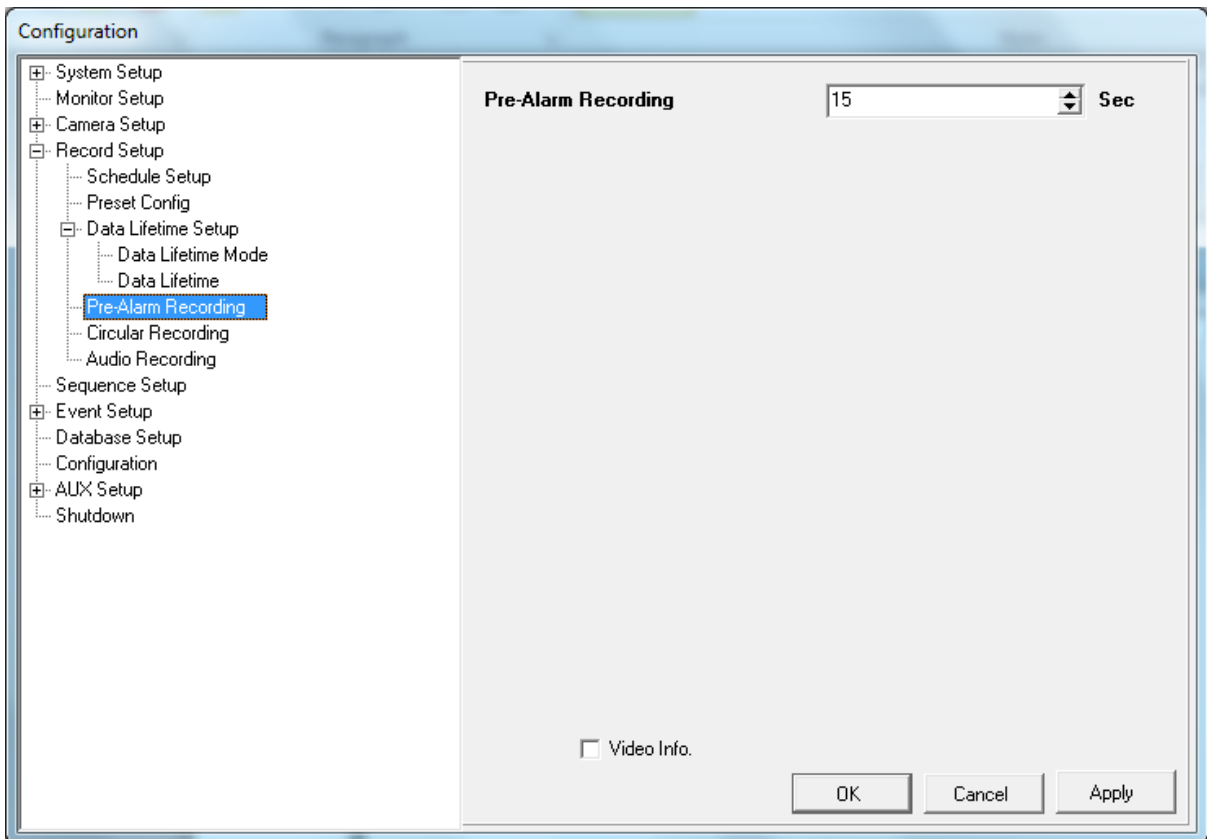


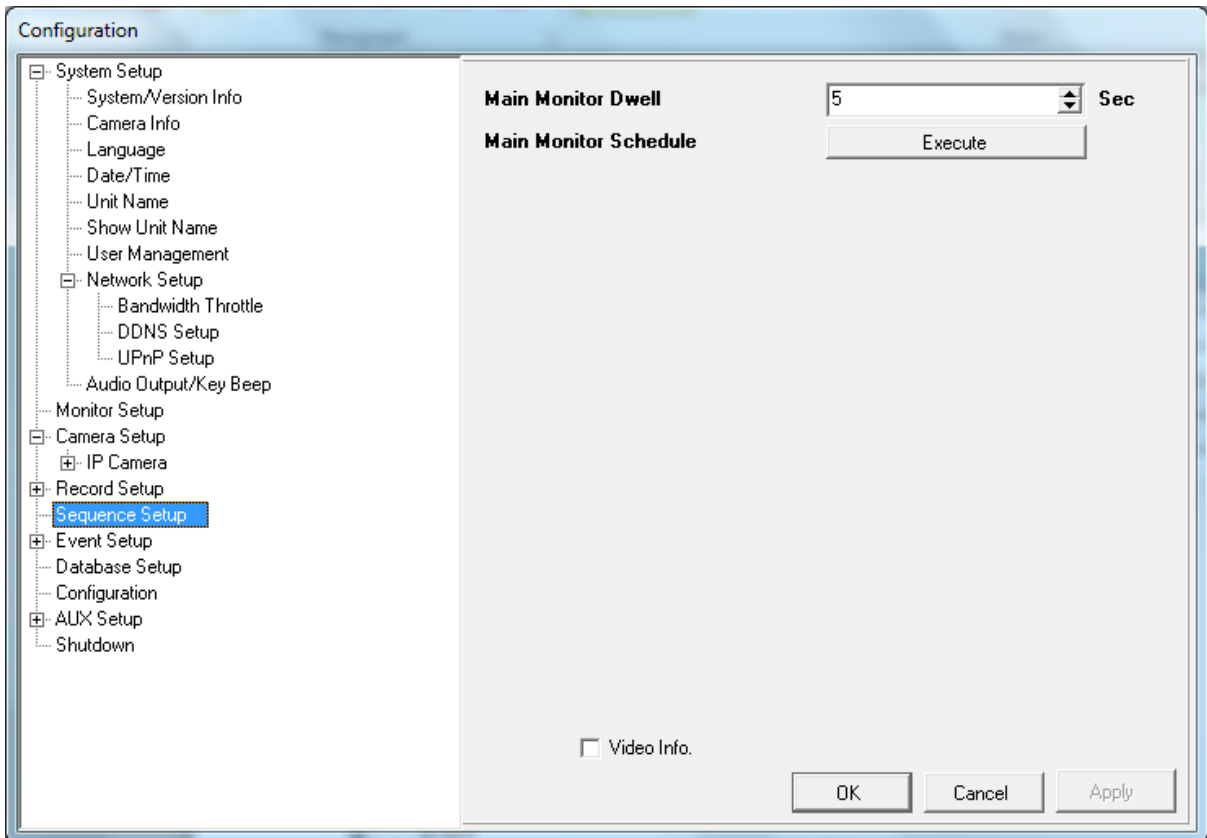
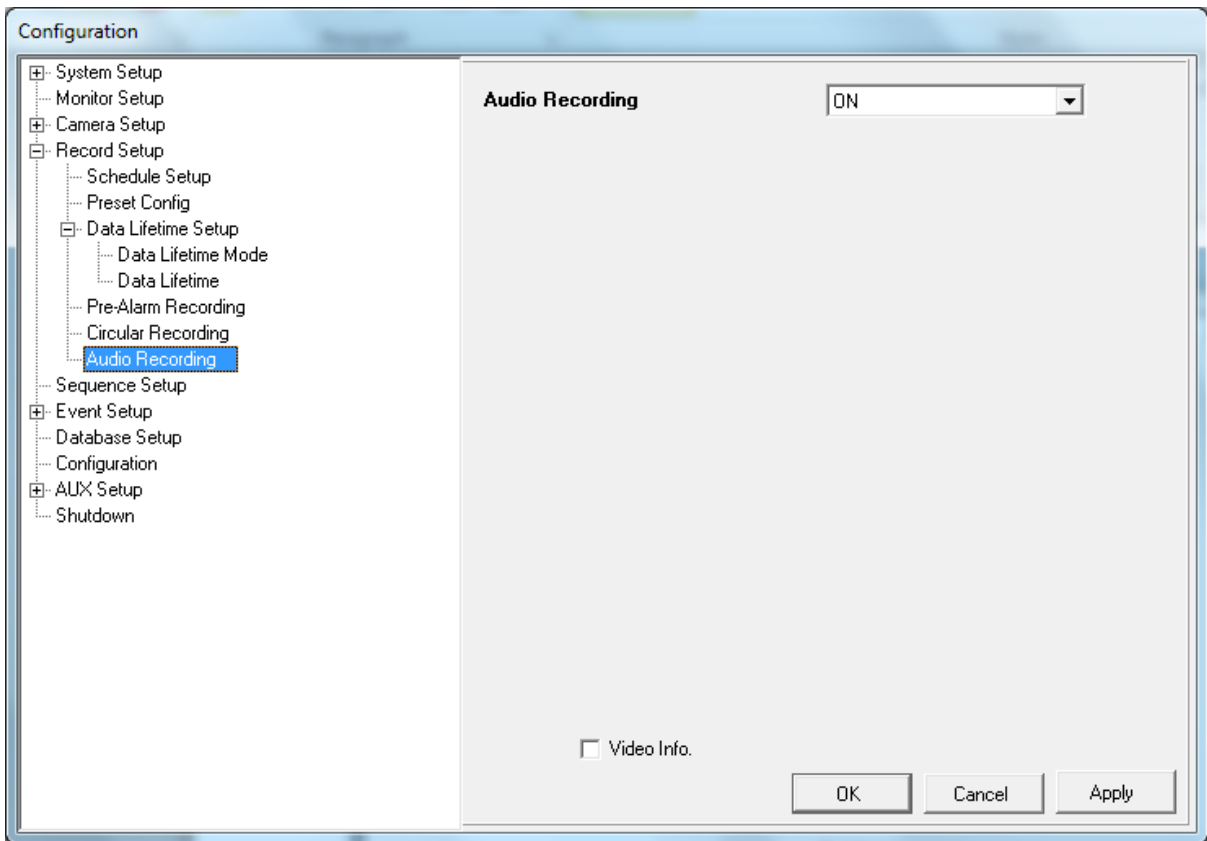


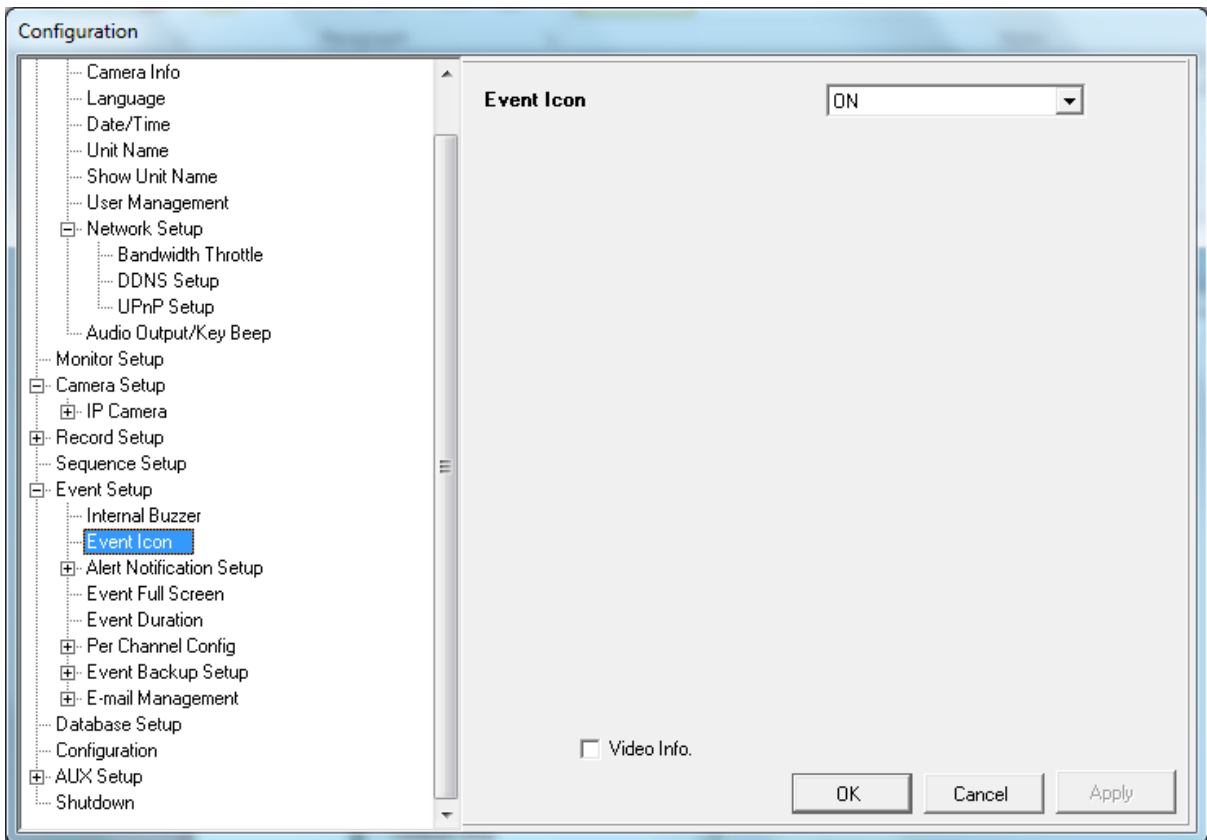
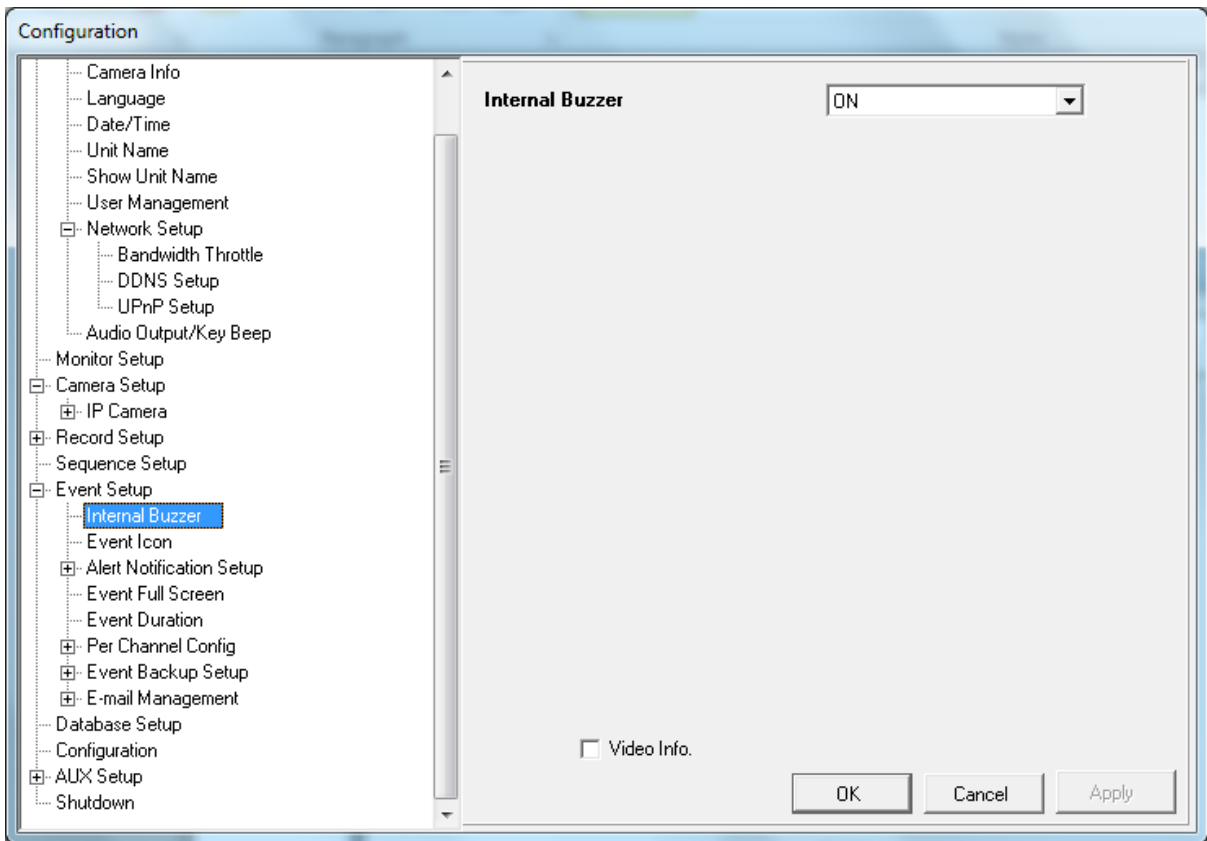


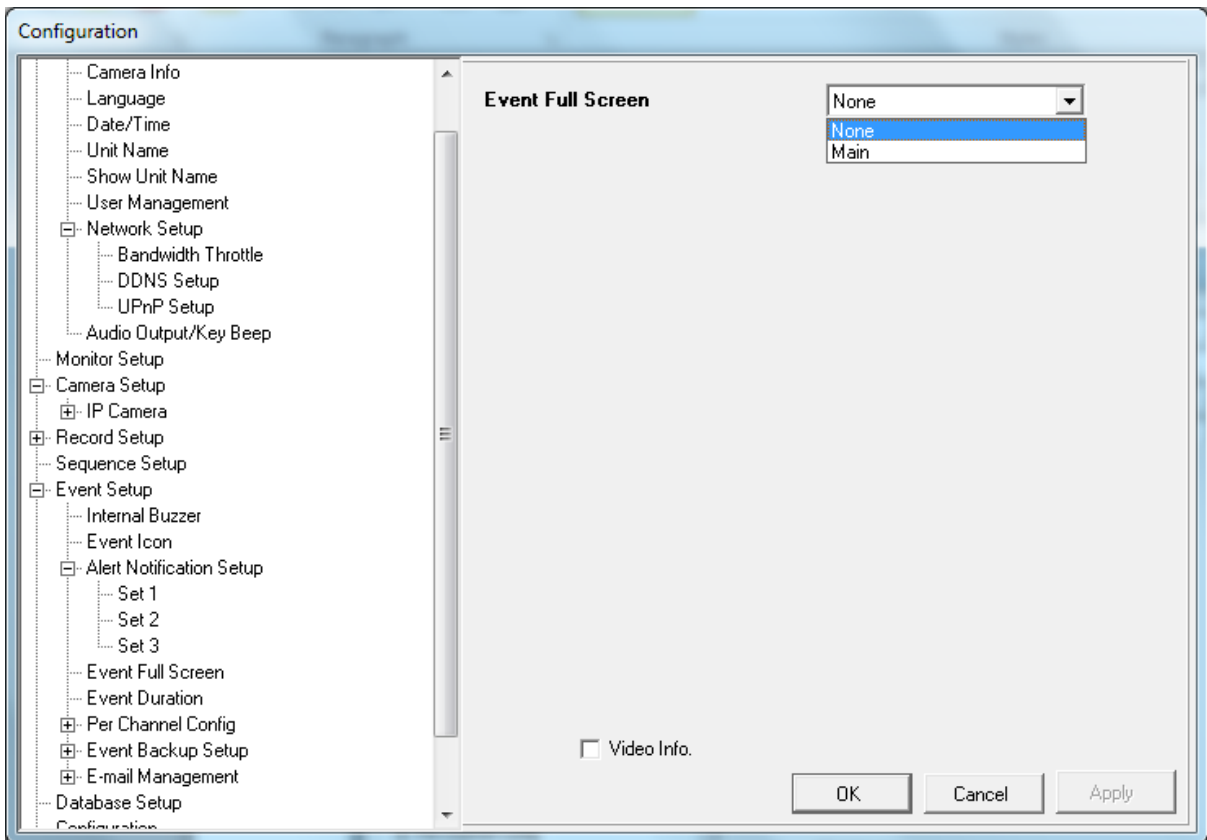
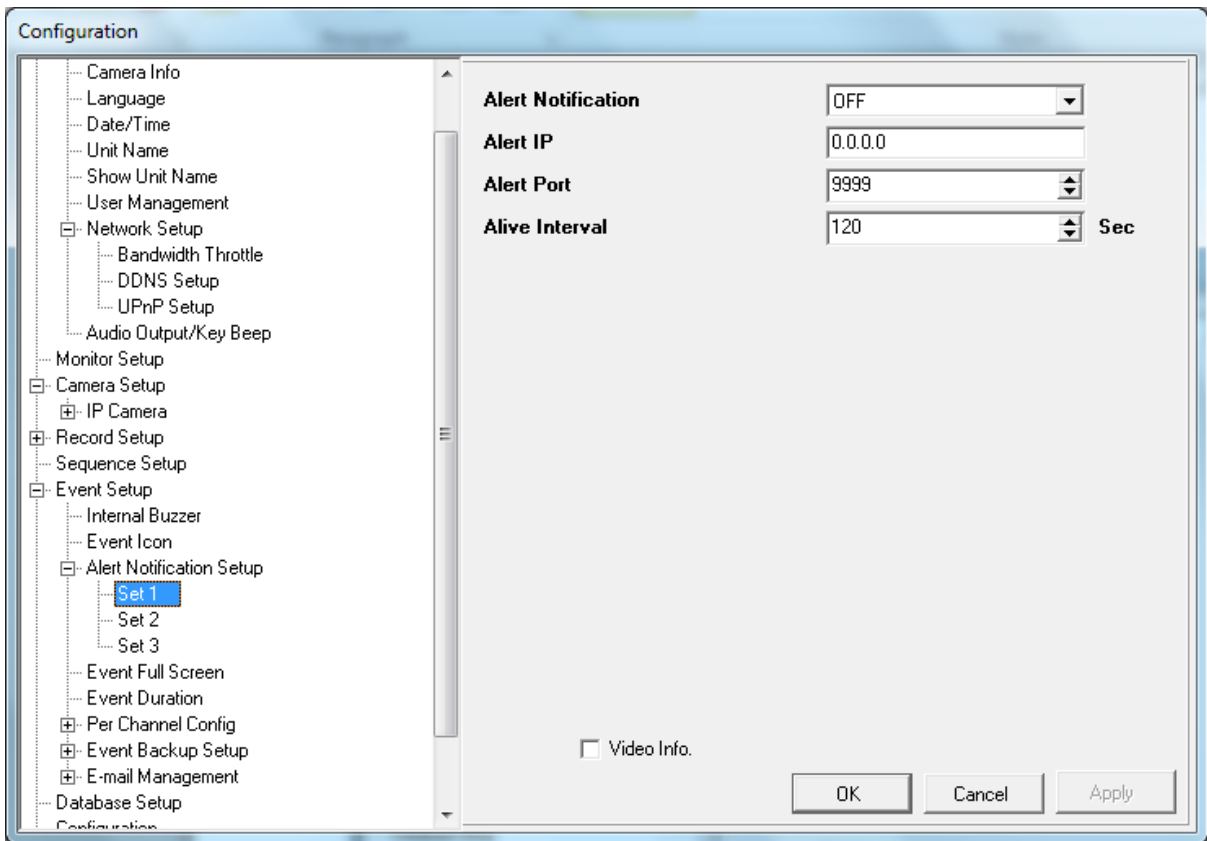


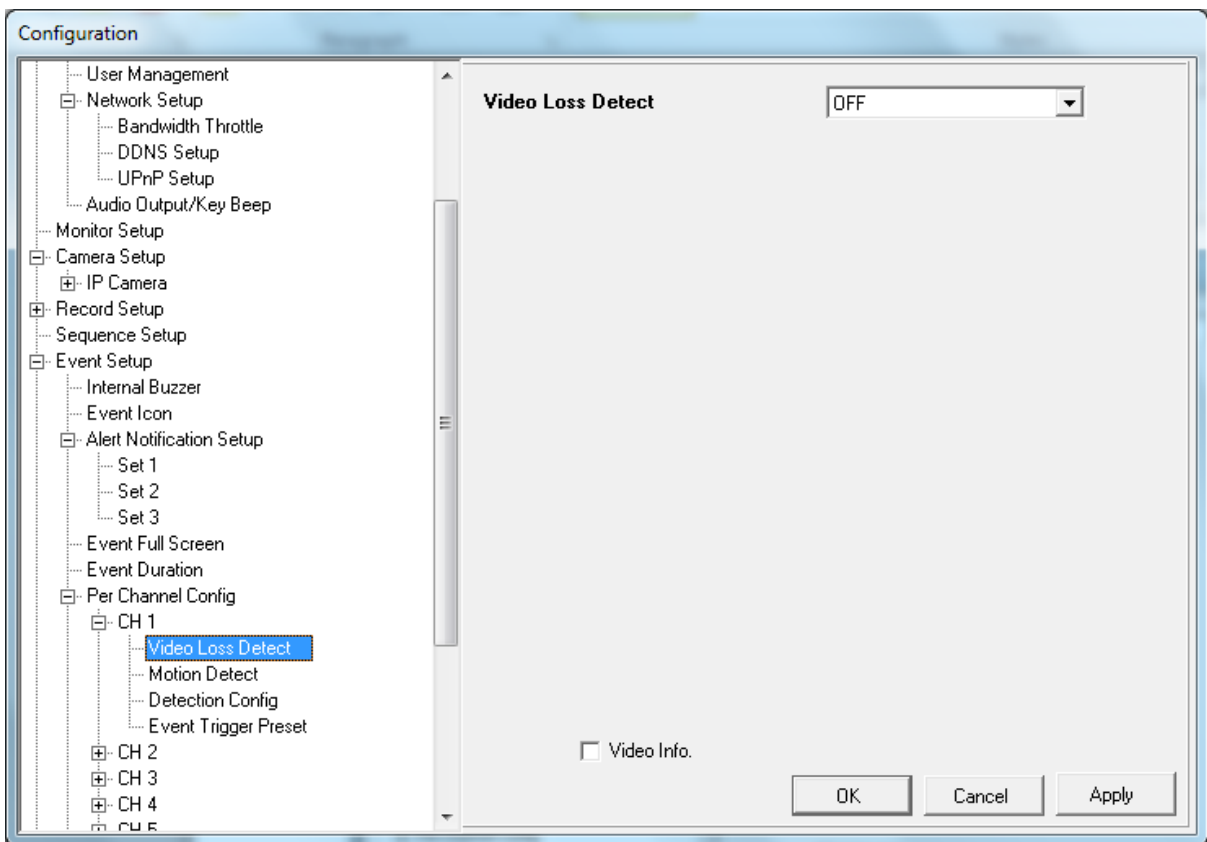
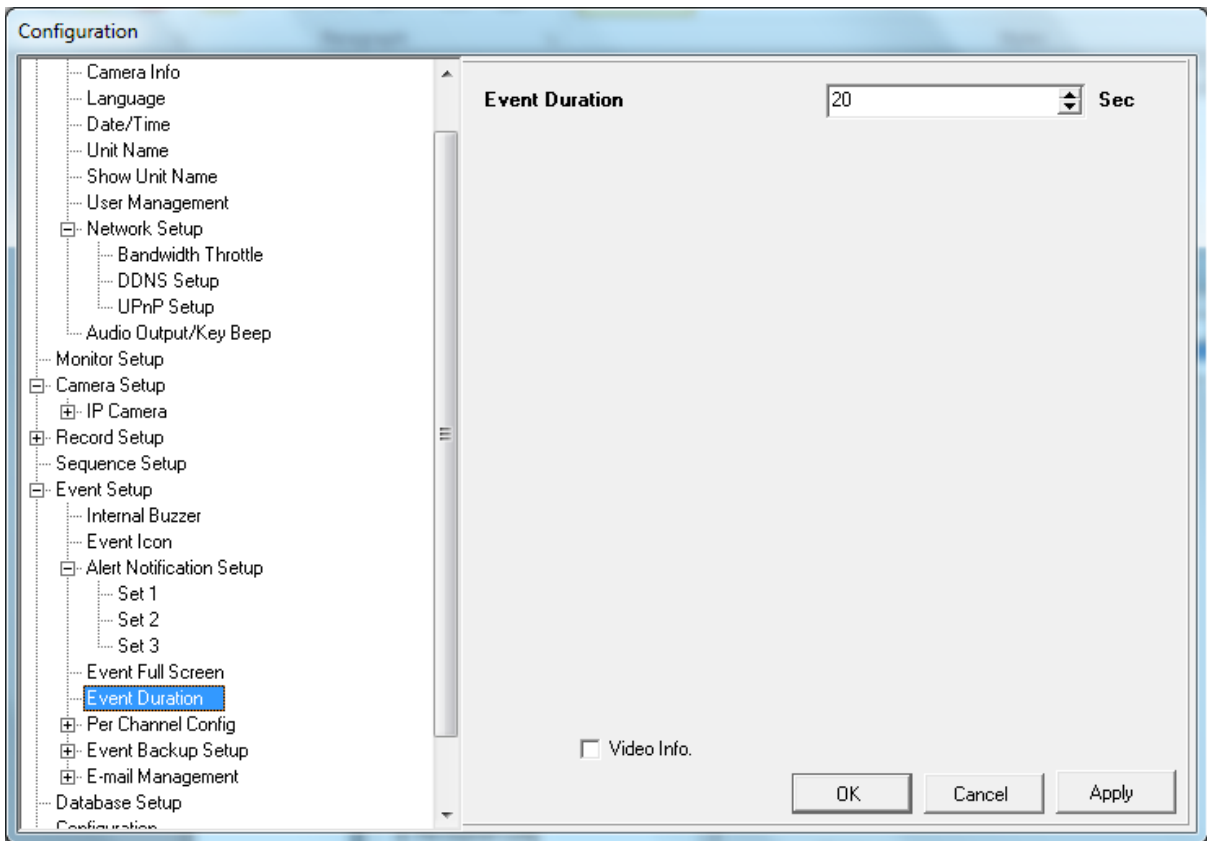


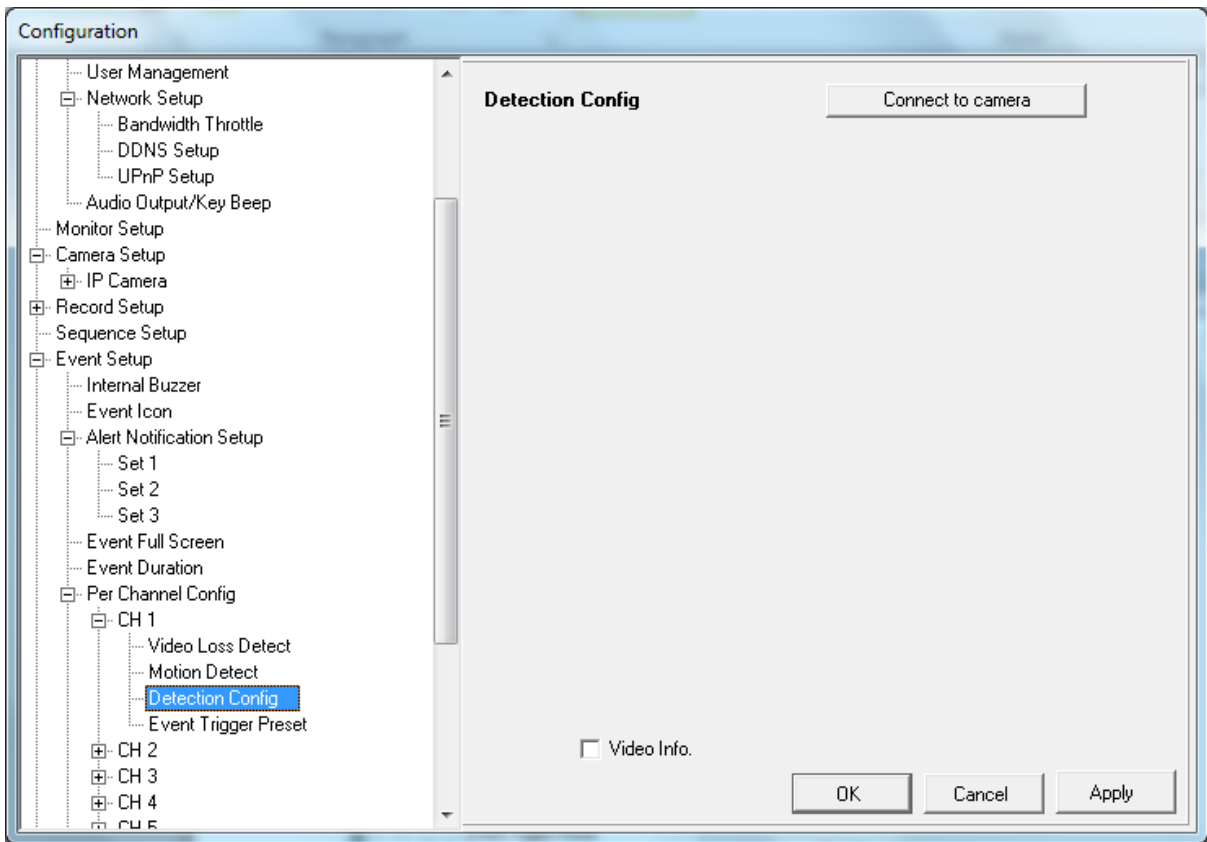
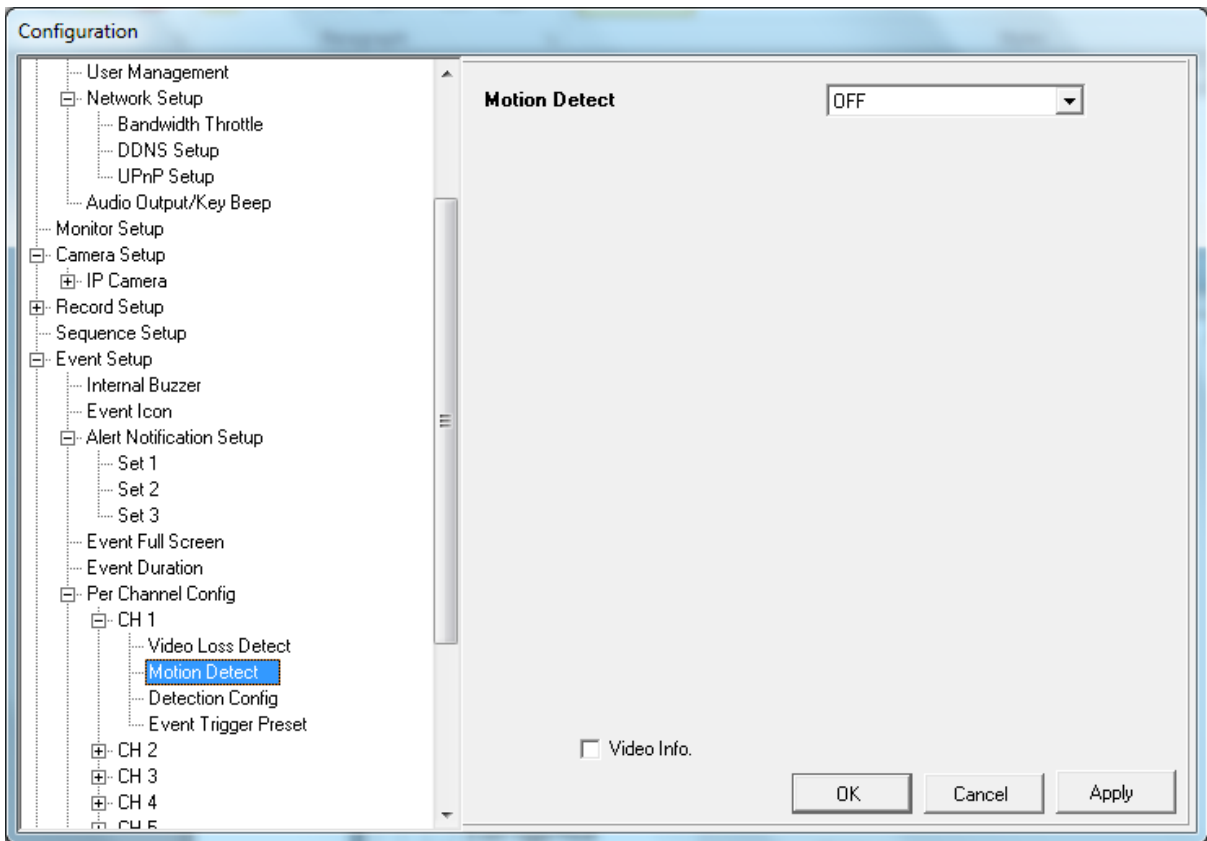












Product: DCS-7513 Firmware Version : 1.00

D-Link

DCS-7513 // LIVE VIDEO SETUP ADVANCED MAINTENANCE STATUS HELP

Setup Wizard
 Network Setup
 Dynamic DNS
 Image Setup
 Audio and Video
 Lens Control
 Preset
 Motion Detection
 Time and Date
 Event Setup
 SD Card
 Logout

NETWORK SETUP

You can configure your LAN and Internet settings here.

Save Settings Don't Save Settings

LAN SETTINGS

DHCP
 Static IP Client

IP address: 192.168.50.74
 Subnet mask: 255.255.255.0
 Default router: 192.168.50.254
 Primary DNS: 0.0.0.0
 Secondary DNS: 0.0.0.0

Enable UPnP presentation
 Enable UPnP port forwarding

Forwarding Port: 1024 Test
 Forwarding Status: UPnP forwarding is inactive

PPPOE SETTINGS

Enable Disable

Helpful Hints...
 Select 'DHCP Connection' if you are running a DHCP server on your network and would like an IP address assigned to your IP camera automatically.
UPnP: Enabling UPnP settings will allow you to configure your IP camera as an UPnP device in the network.
PPPoE Setting: If you use the IP camera to connect directly to the Internet, you will need to enter the username and password, which were given to you when you set up your account with your Internet Service Provider. If the camera is behind a router or a gateway, you do not need to configure this setting.
HTTP: HTTP Port is the port you allocate in order to connect to the IP camera via a standard

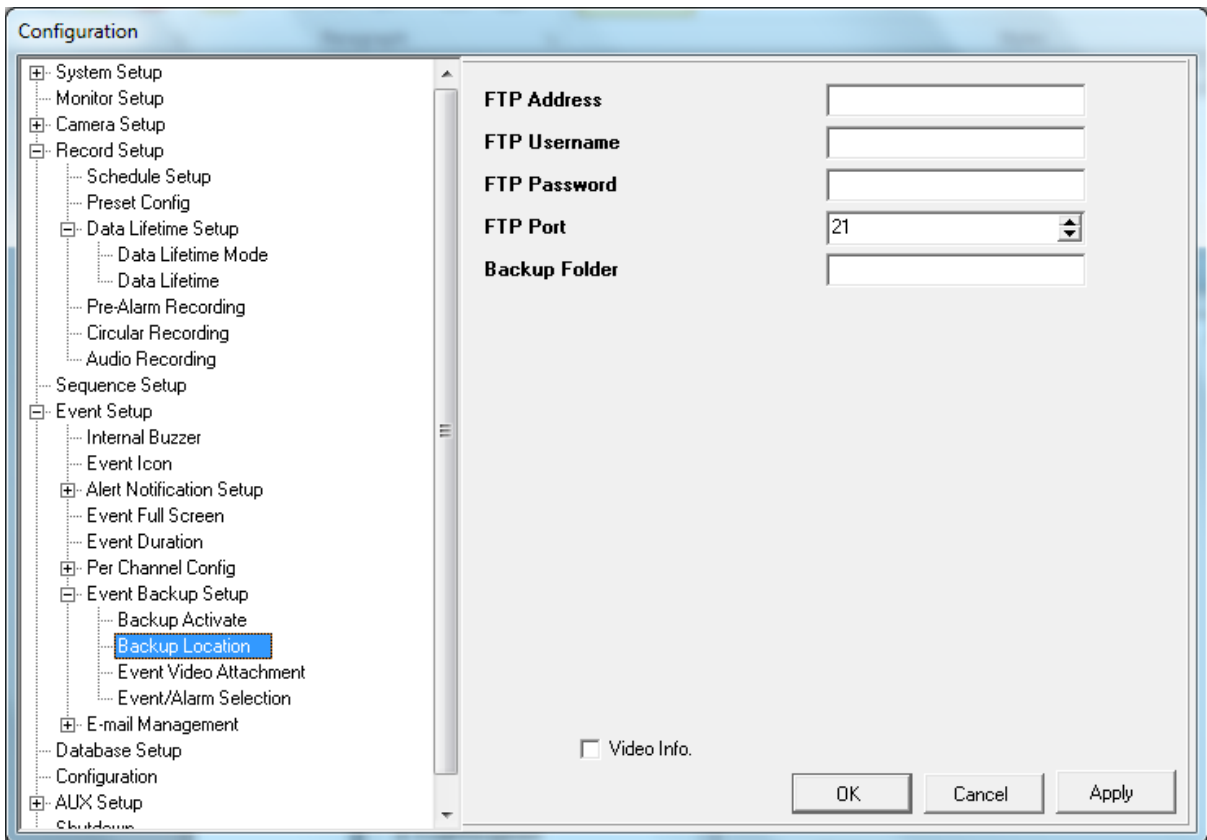
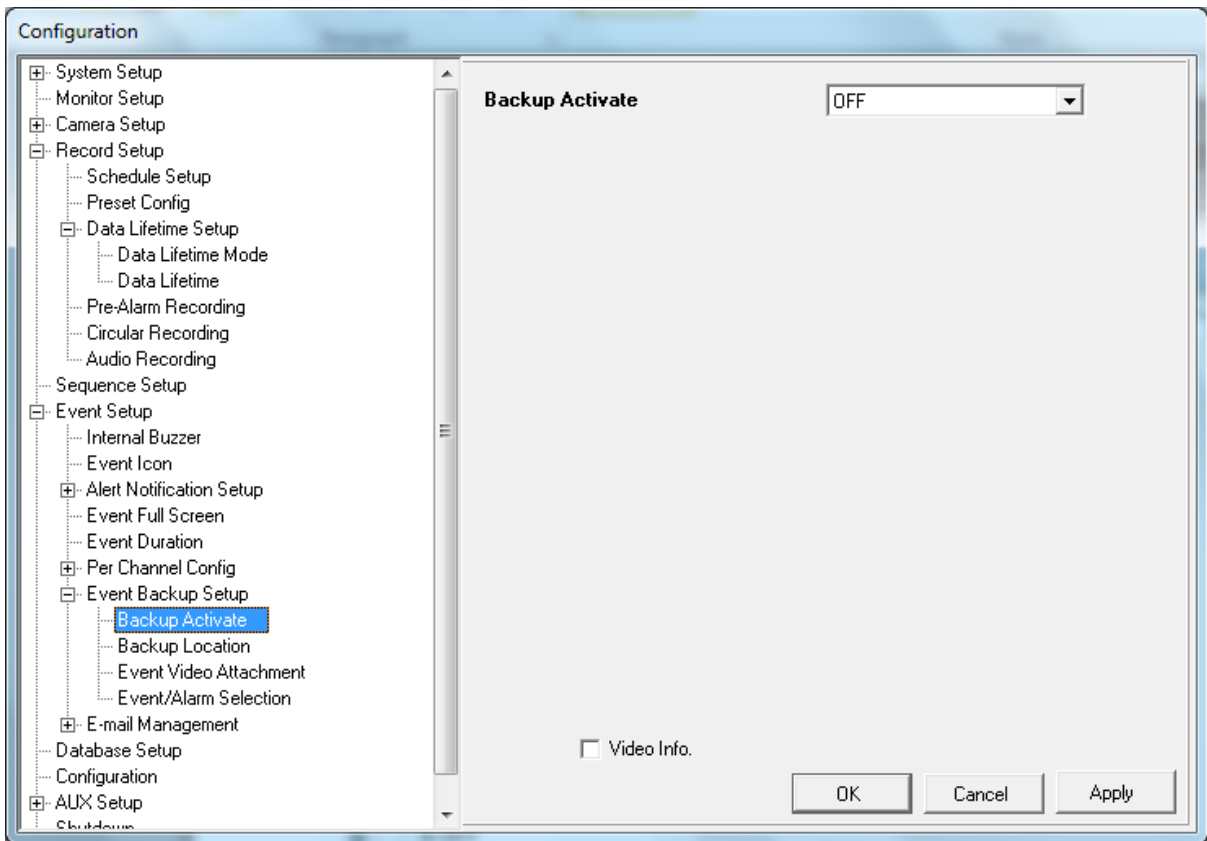
Configuration

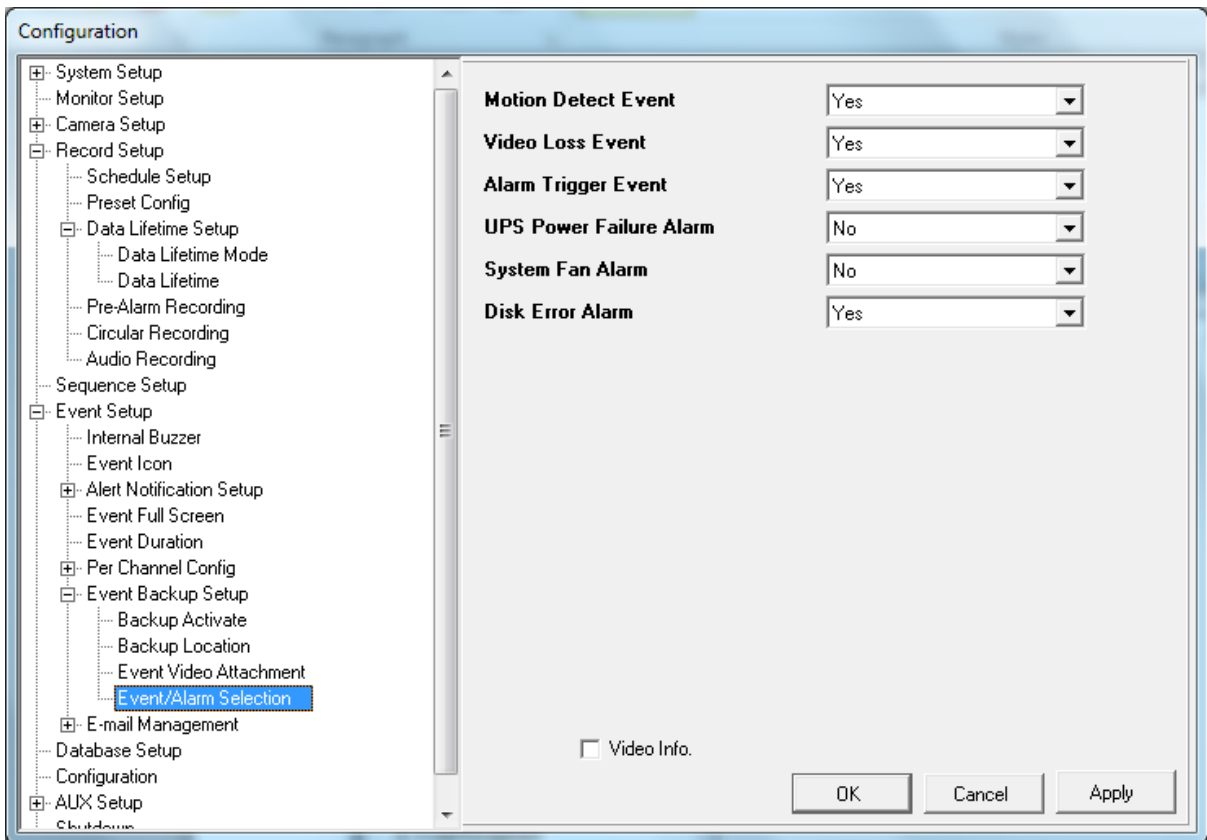
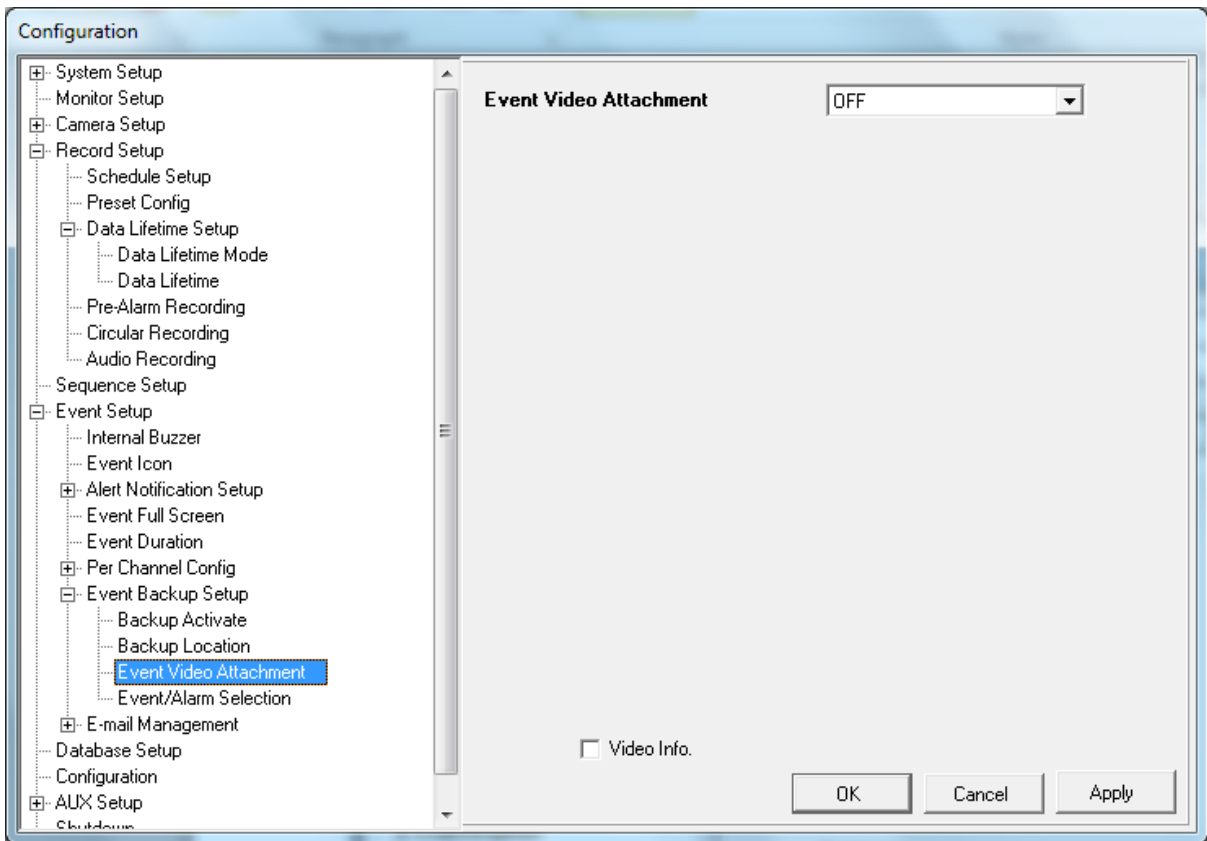
- Data Lifetime Mode
- Data Lifetime
- Pre-Alarm Recording
- Circular Recording
- Audio Recording
- Sequence Setup
- Event Setup
 - Internal Buzzer
 - Event Icon
 - Alert Notification Setup
 - Event Full Screen
 - Event Duration
 - Per Channel Config
 - CH 1
 - Video Loss Detect
 - Motion Detect
 - Detection Config
 - Event Trigger Preset
 - CH 2
 - Video Loss Detect
 - Motion Detect
 - Detection Config
 - Event Trigger Preset
 - CH 3
 - CH 4
 - CH 5
 - CH 6
 - CH 7
 - CH 8
 - Event Backup Setup

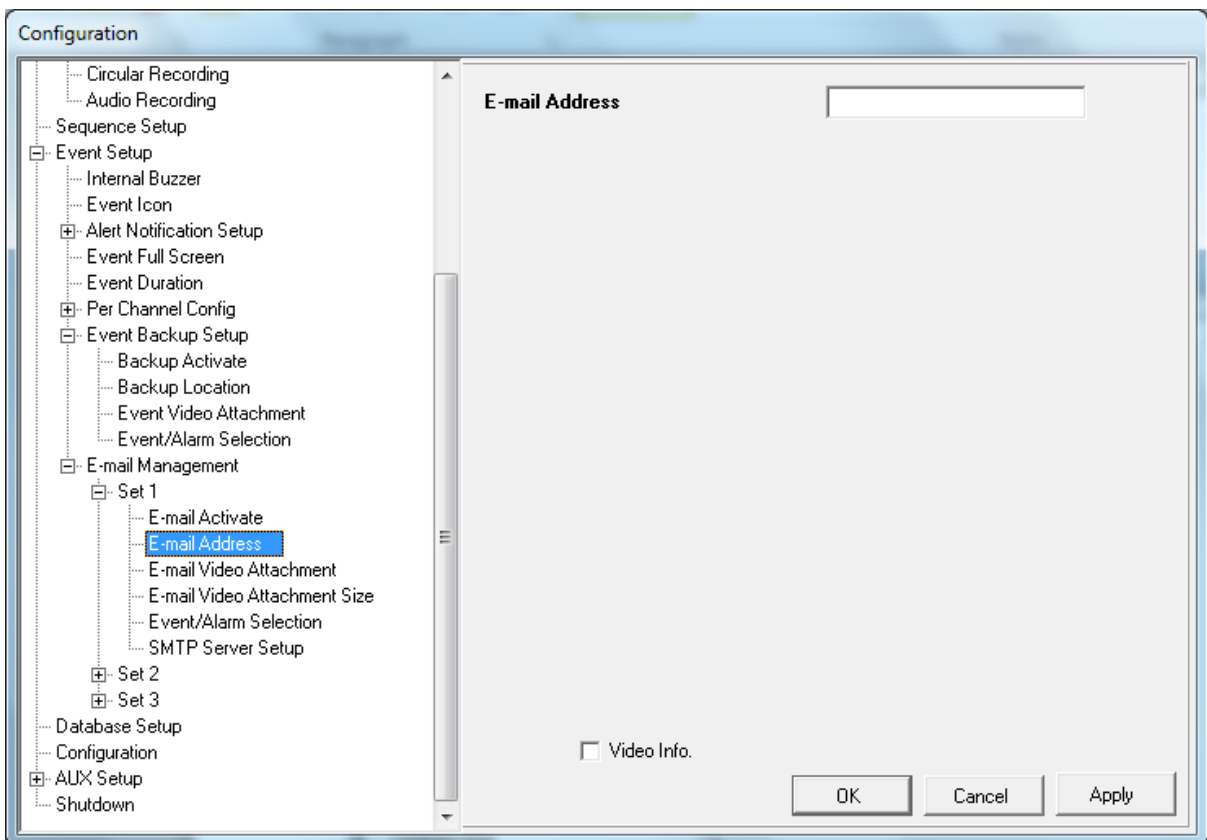
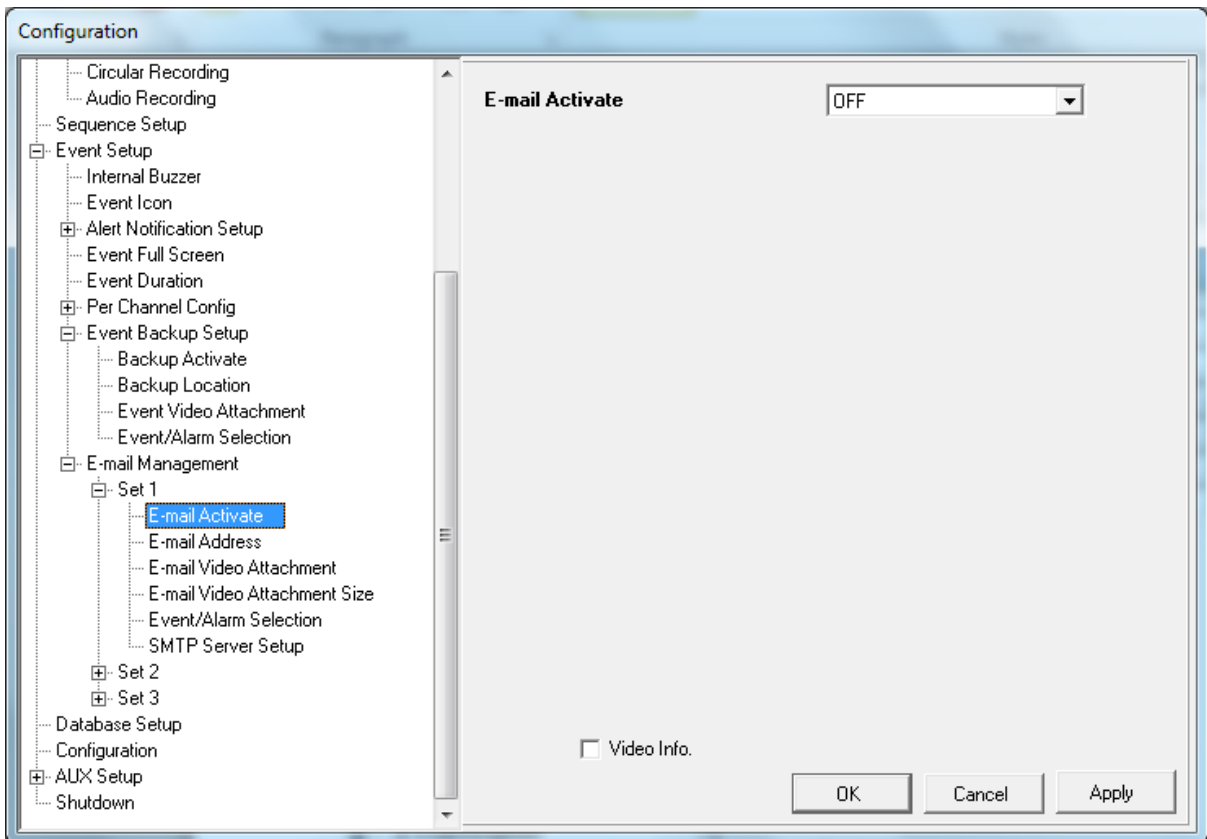
Event Trigger Preset 0

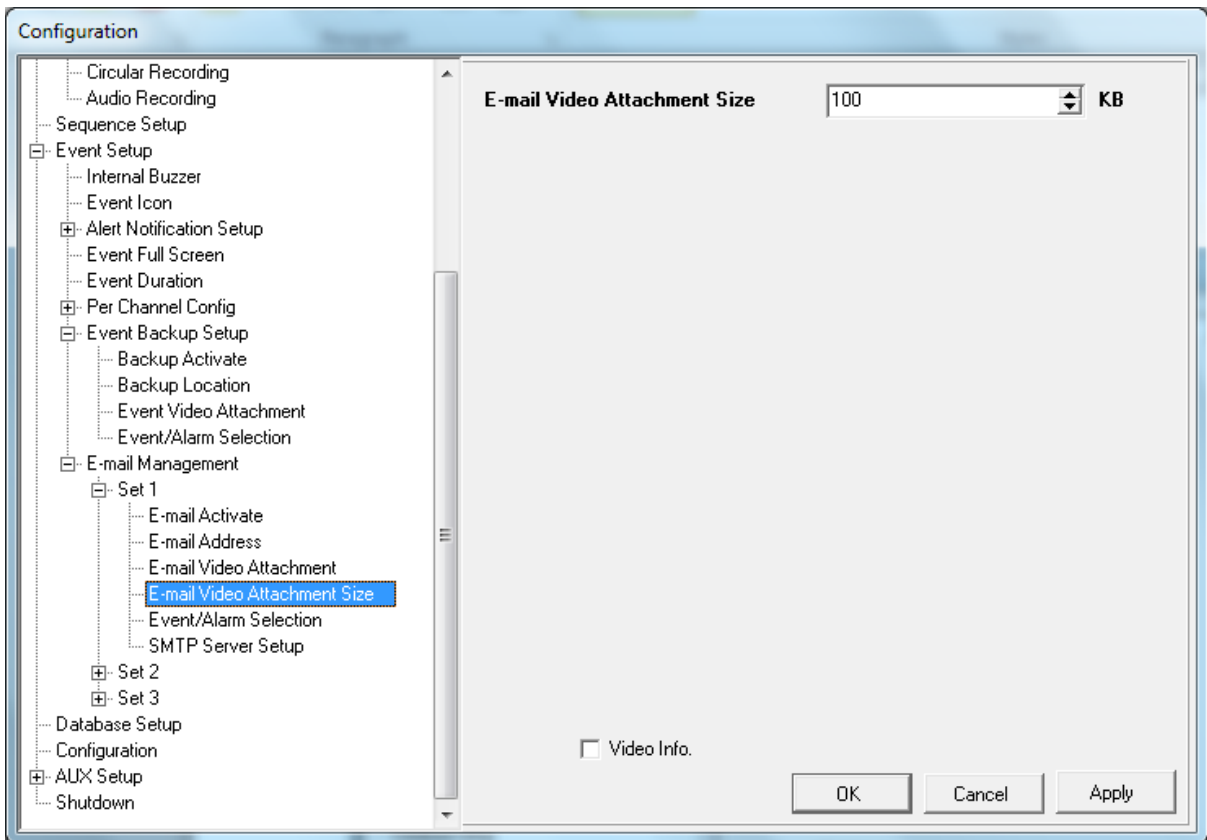
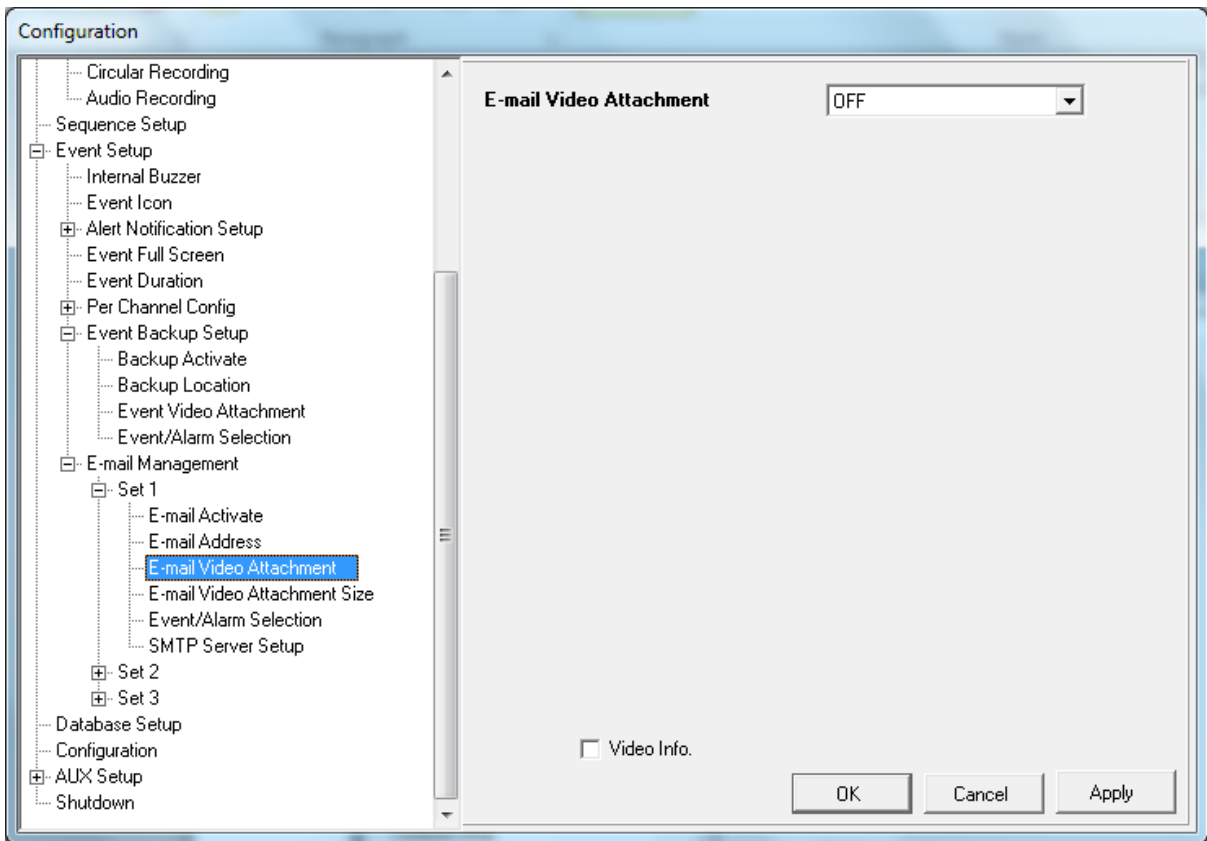
Video Info.

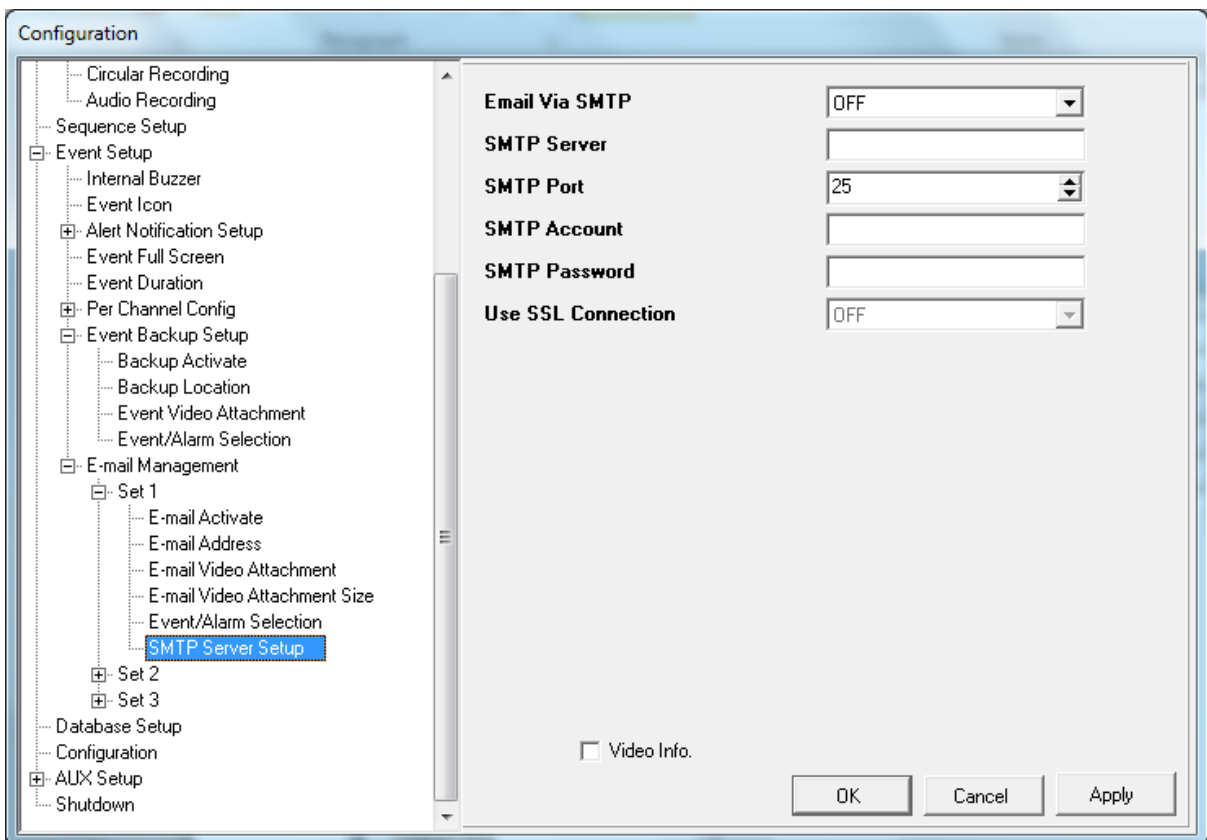
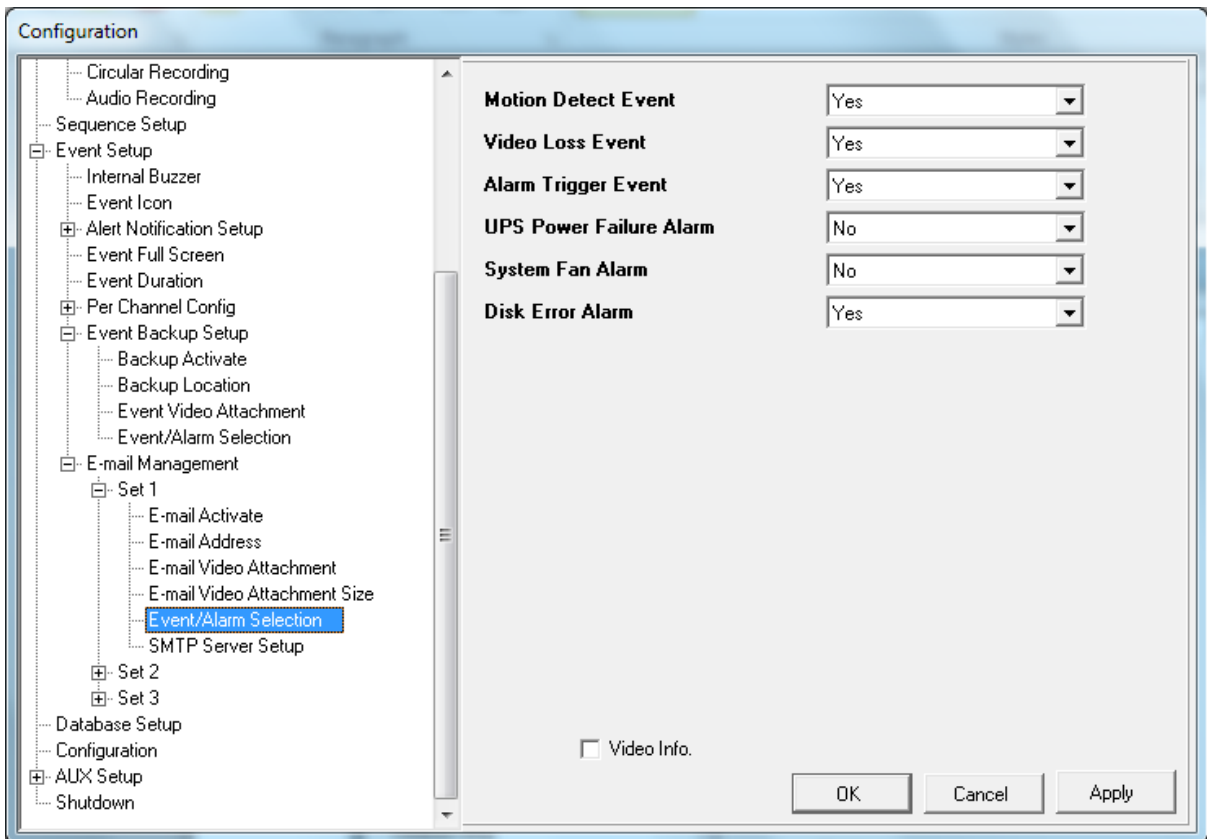
OK Cancel Apply

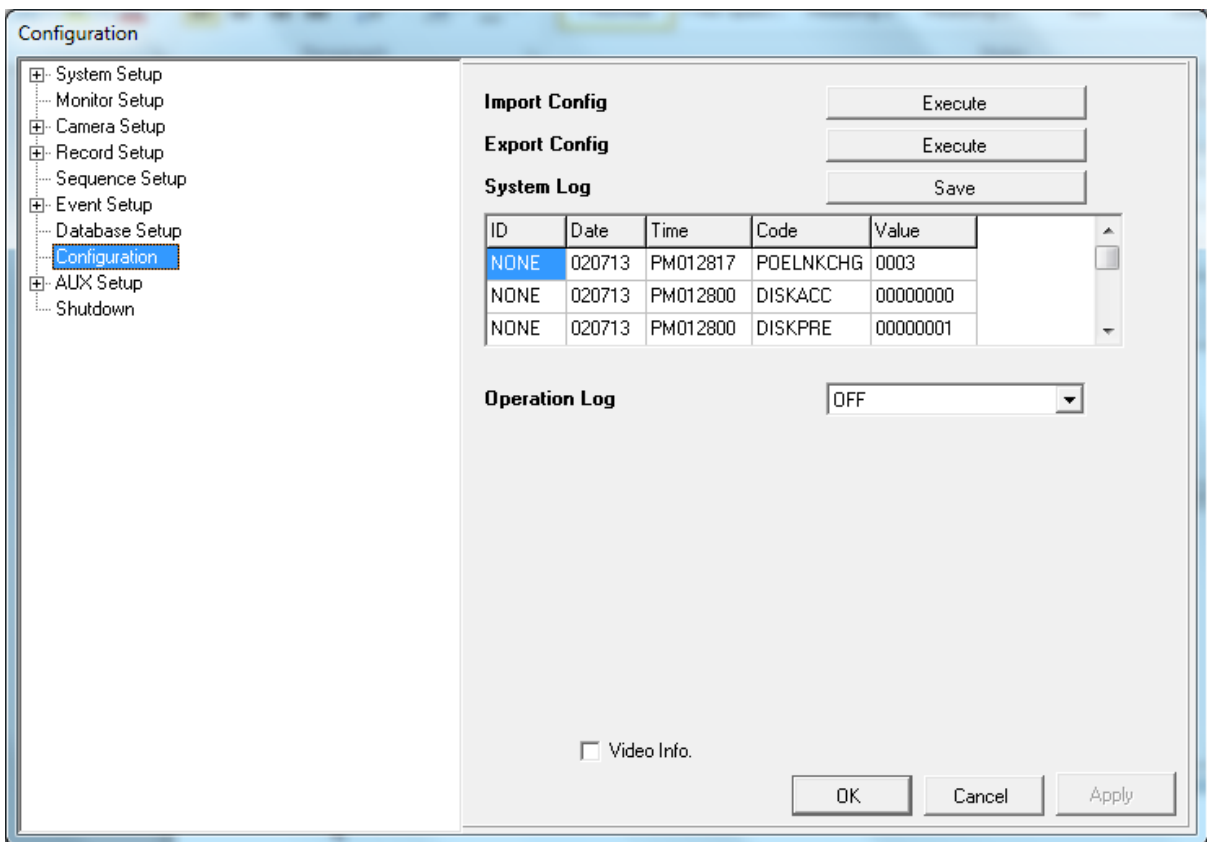
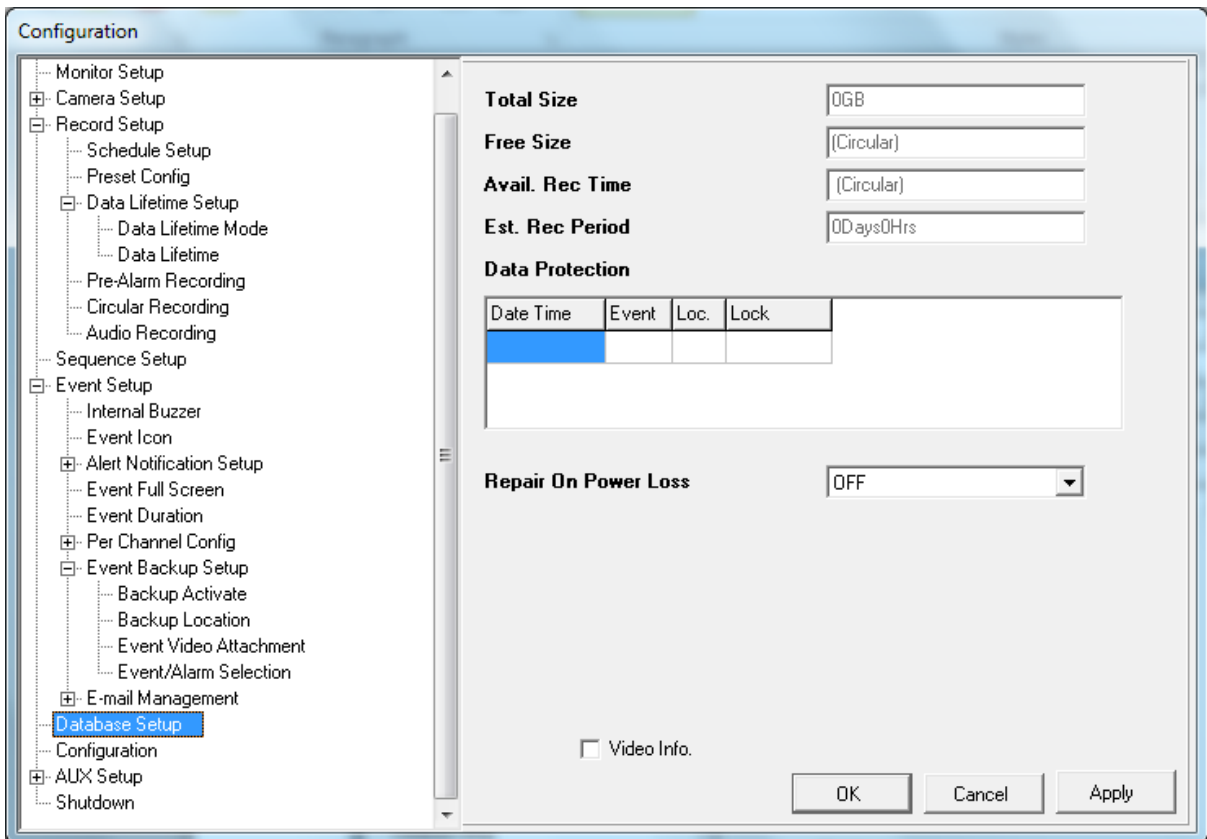












Configuration

- [-] System Setup
 - Monitor Setup
- [-] Camera Setup
- [-] Record Setup
- [-] Sequence Setup
- [-] Event Setup
- [-] Database Setup
- [-] Configuration
- [-] AUX Setup
 - PoE Setup**
 - [-] UPS Setup
 - Shutdown

PoE Power Limitation W

PoE Status

| Port | Link | Consumption[W] | Mac |
|------|------|----------------|-------------------|
| 01 | up | 2.9 W | 28:10:7B:06:C8:D5 |
| 02 | up | 3.7 W | F0:7D:68:09:38:9D |
| 03 | down | 0.0 W | ----- |
| 04 | down | 0.0 W | ----- |
| 05 | down | 0.0 W | ----- |
| 06 | down | 0.0 W | ----- |
| 07 | down | 0.0 W | ----- |
| 08 | down | 0.0 W | ----- |

Video Info.

OK Cancel Apply

Configuration

- [-] System Setup
 - Monitor Setup
- [-] Camera Setup
- [-] Record Setup
- [-] Sequence Setup
- [-] Event Setup
- [-] Database Setup
- [-] Configuration
- [-] AUX Setup
 - PoE Setup
 - [-] UPS Setup
 - UPS Protocol
 - Power Failure Scenario
 - UPS Shutdown Setting
 - UPS Info
 - Shutdown

UPS Protocol

- None
- None**
- APC

Video Info.

OK Cancel Apply

