

DNS-323 Firmware 1.03

D-Link Easy Search Utility

Network Storage Device

Name	IP	Netmask	Gateway
dlink-7DDAAF	192.168.0.32	255.255.255.0	192.168.0.1

Refresh
Configuration
Language

LAN

IP: [. . .] Receive DHCP: []
Netmask: [. . .]
Gateway: [. . .]

Apply

Drive Mapping

Volume Name	Location
-------------	----------

Available Drive Letters: [F:]

Connect Disconnect

About Exit

D-Link Easy Search Utility

Network Storage Device

Name	IP	Netmask	Gateway
dlink-7DDAAF	192.168.0.32	255.255.255.0	192.168.0.1

Refresh
Configuration
Language

LAN

IP: [192 . 168 . 0 . 32] Receive DHCP: [Enable]
Netmask: [255 . 255 . 255 . 0]
Gateway: [192 . 168 . 0 . 1]

Apply

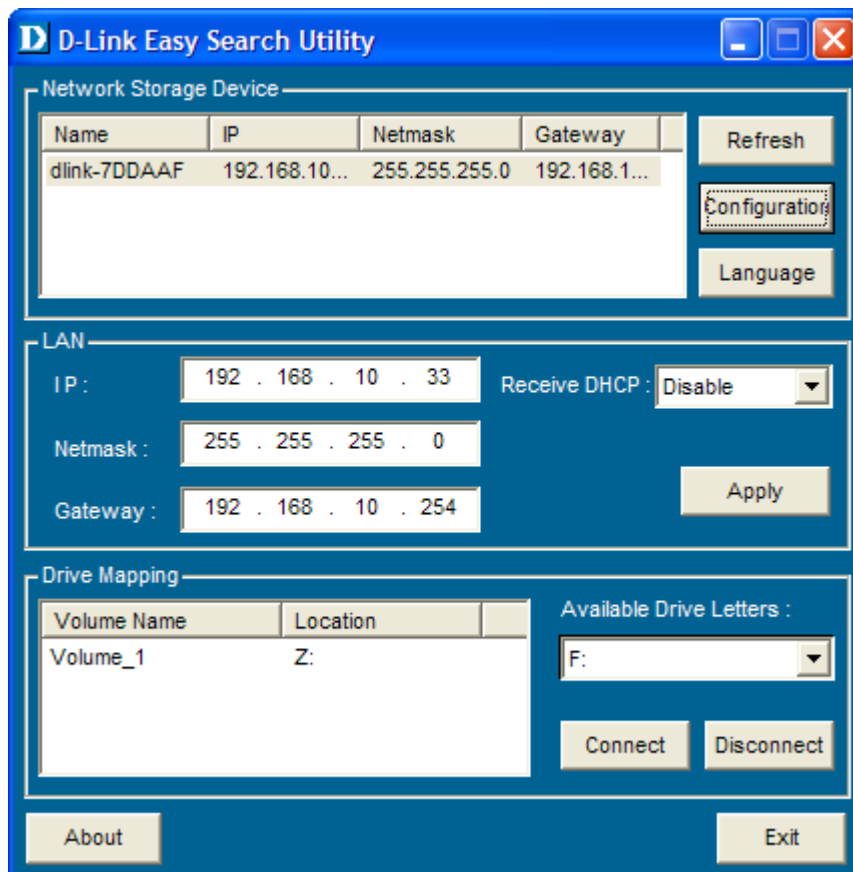
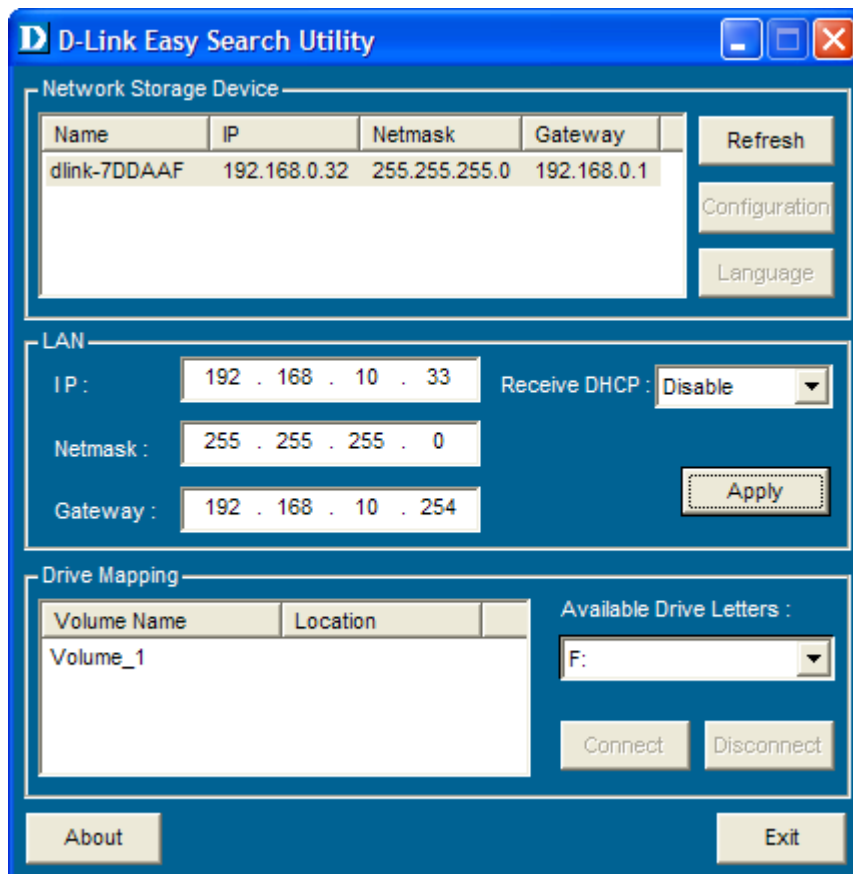
Drive Mapping

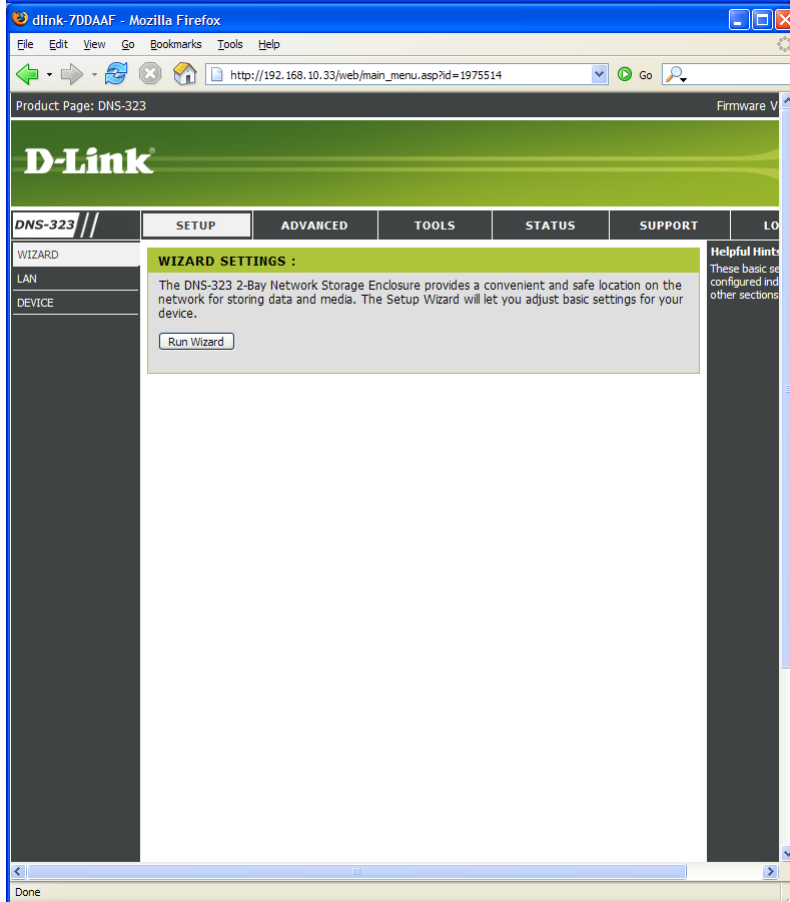
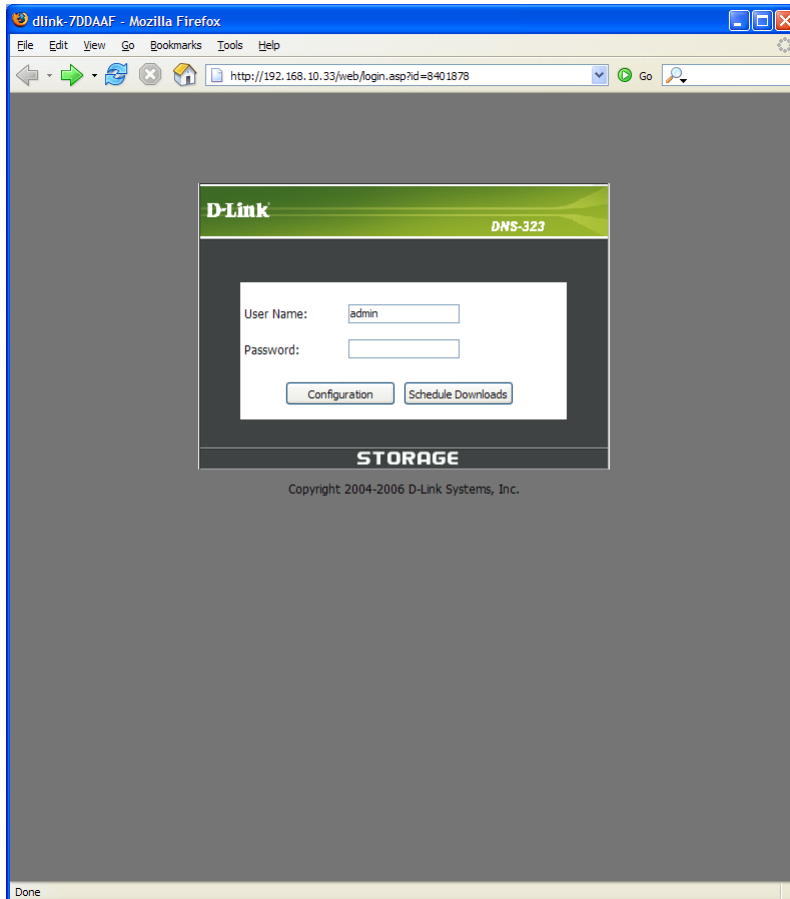
Volume Name	Location
Volume_1	Z:

Available Drive Letters: [F:]

Connect Disconnect

About Exit





http://192.168.10.33 - dlink-7DDAAF - Mozilla Firefox

D-Link *DNS-323*

Welcome to the DNS-323Setup Wizard. The Wizard will guide you through these five quick steps. Begin by clicking on **Next**.

1. Set Password
2. Choose Time Zone
3. Set LAN Connection Type
4. Set Additional Information
5. Restart

Copyright 2004-2006 D-Link Systems, Inc.

Done

http://192.168.10.33 - dlink-7DDAAF - Mozilla Firefox

D-Link *DNS-323*

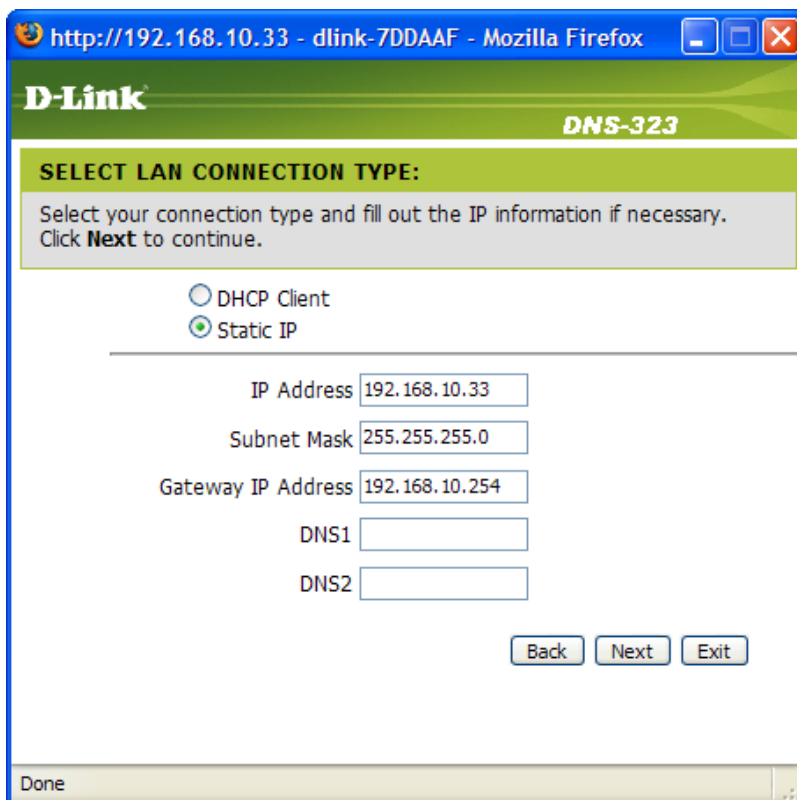
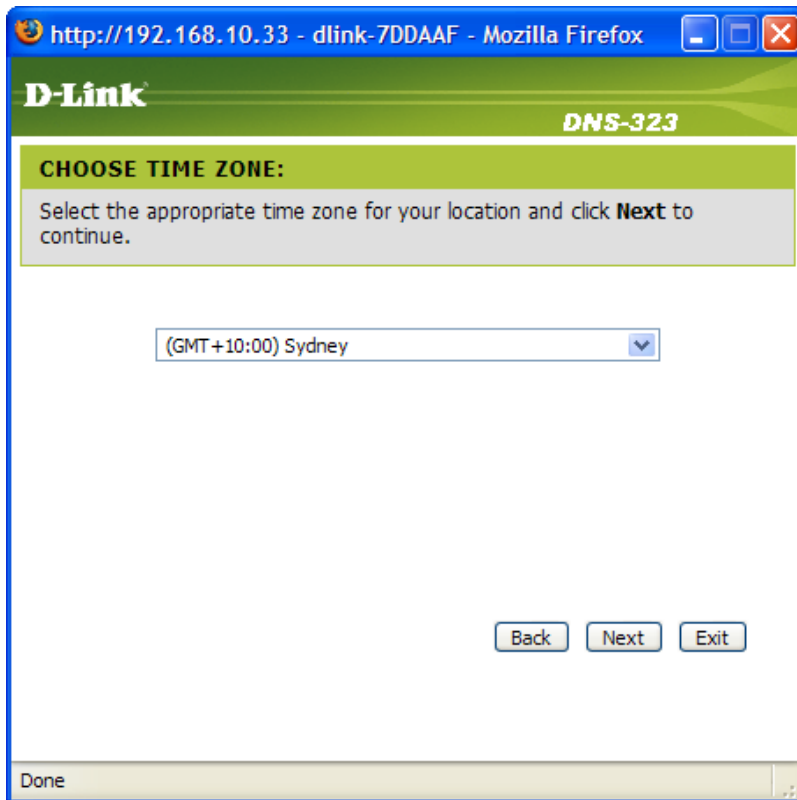
SET PASSWORD:

You may change the **admin** account password by entering in a new password. Click **Next** to continue.

New Password

Confirm Password

Done



http://192.168.10.33 - dlink-7DDAAF - Mozilla Firefox

D-Link **DNS-323**

SELECT LAN CONNECTION TYPE:

Select your connection type and fill out the IP information if necessary.
Click **Next** to continue.

DHCP Client
 Static IP

IP Address
Subnet Mask
Gateway IP Address
DNS1
DNS2

Done

http://192.168.10.33 - dlink-7DDAAF - Mozilla Firefox

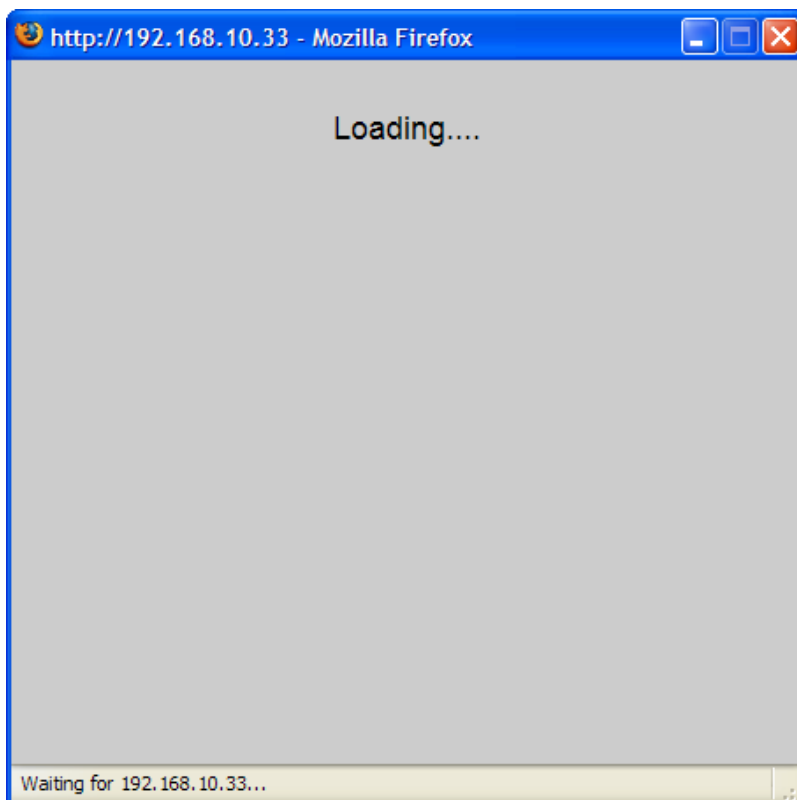
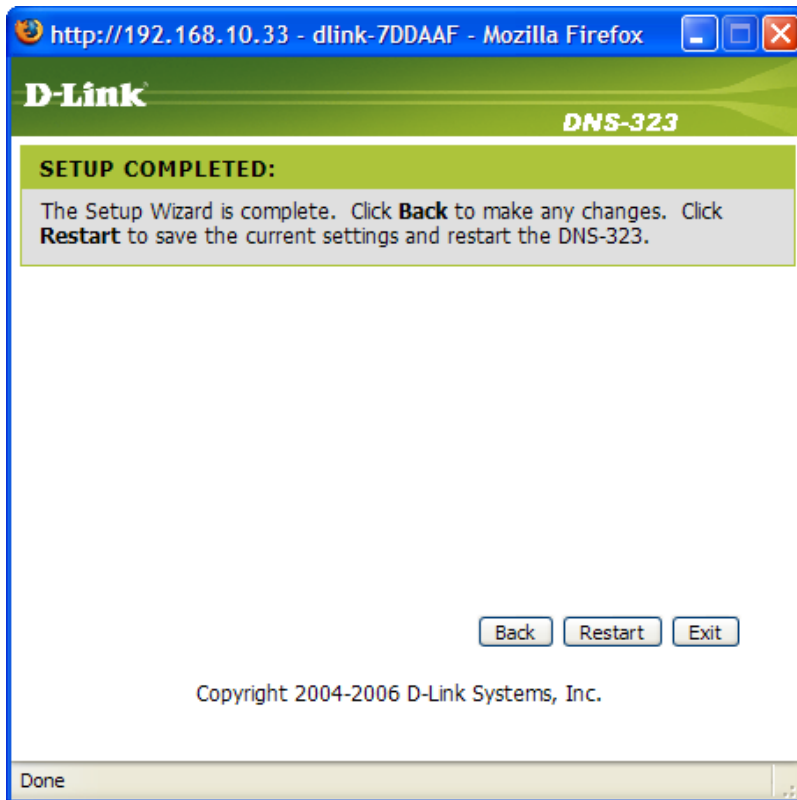
D-Link **DNS-323**

Set Additional Information:

Enter your Workgroup, Name, and Description for the DNS-323 if necessary.
Otherwise you may accept the default values and click **Next** to continue.

Workgroup
Name
Description

Done



Product Page: DNS-323

D-Link

DNS-323 // SETUP ADVANCED TOOLS STATUS SUPPORT

WIZARD LAN DEVICE

LAN SETTINGS :
 Select your connection type and fill out the IP information if necessary.

LAN SETTINGS :
 Speed 100 Mbps
 Link Speed Auto 100 1000

DHCP Client
 Static IP
 IP Address :
 Subnet Mask :
 Gateway IP Address :
 DNS1 :
 DNS2 :

Helpful Hints
 A Static IP is required if you will be using a server.

Done

http://192.168.10.33

If you set the link speed to 1000Mbps but are connected to a 100Mbps network, you will lose connection to the DNS-323. Only use this setting if you are having trouble communicating with the DNS-323 on a fully gigabit (1000Mbps) network.

Product Page: DNS-323

D-Link

DNS-323 // SETUP ADVANCED TOOLS STATUS SUPPORT

WIZARD LAN DEVICE

DEVICE SETTINGS :
 Enter a workgroup, name, and description.

DEVICE SETTINGS :
 Workgroup
 Name
 Description

Helpful Hints
 DEVICE: You can enter a name for this device by name in your workgroup. For example, where 7DDAAF is six digits of the device address. The name can be found at the bottom of the device box.

Done

dlink-7DDAAF - Mozilla Firefox

http://192.168.10.33/web/advanced/user_account.asp?id=1372316

Product Page: DNS-323 Firmware V

D-Link

DNS-323 // SETUP **ADVANCED** TOOLS STATUS SUPPORT LO

USERS :
Create users and their passwords. Assign users to groups if desired.
Save Settings Don't Save Settings

CREATE A USER :

Group: NONE

User Name:

Password:

Confirm Password:

USER LIST :

No.	User Name	Group Name	Change Password	Delete

Helpful Hints: User password must be at least five characters. A user name cannot be the same as a group name.

Done

dlink-7DDAAF - Mozilla Firefox

http://192.168.10.33/web/advanced/group.asp?id=8041768

Product Page: DNS-323 Firmware V

D-Link

DNS-323 // SETUP **ADVANCED** TOOLS STATUS SUPPORT LO

GROUPS :
Create new groups that users can be assigned to.

CREATE A GROUP :

Add New Group: Add

GROUPS LIST :

No.	Group name	User name	Del

Helpful Hints: Using groups will make user creation easier. Users need the proper permissions.

Done

dlink-7DDAAF - Mozilla Firefox

http://192.168.10.33/web/tools/disk_quota.asp?id=1566791

Product Page: DNS-323 Firmware V

D-Link

DNS-323 // SETUP **ADVANCED** TOOLS STATUS SUPPORT LO

USERS GROUPS **QUOTAS** NETWORK ACCESS FTP SERVER UPnP AV SERVER iTunes SERVER DHCP SERVER

QUOTAS SETTINGS :
Assign hard drive space quotas for users or groups.

USER QUOTA SETTINGS :

No.	User Name	Used	Limit	Edit

GROUP QUOTA SETTINGS :

No.	Group Name	Used	Limit	Edit

QUOTA STATUS :
Status: Stopped

Helpful Hint: The hard drive finished sync before quota

Done

dlink-7DDAAF - Mozilla Firefox

http://192.168.10.33/web/advanced/session.asp?id=4009444

Product Page: DNS-323 Firmware V

D-Link

DNS-323 // SETUP **ADVANCED** TOOLS STATUS SUPPORT LO

USERS GROUPS QUOTAS **NETWORK ACCESS** FTP SERVER UPnP AV SERVER iTunes SERVER DHCP SERVER

NETWORK ACCESS SETTINGS :
Assign permissions for users and groups on the local network.

NETWORK ACCESS SETTINGS :

Category User Group

User All accounts

Folder

Permission

Comment

NETWORK ACCESS LIST :

Share	Path	User/Group	Comment	R/W
Volume_1	Volume_1	ALL		<input checked="" type="checkbox"/> <input type="checkbox"/> <input type="checkbox"/> <input type="checkbox"/>

Helpful Hint: By default, each folder or volume will have open-access rules. These rules must be changed before user or group specific rules are created.

dlink-7DDAAF - Mozilla Firefox

File Edit View Go Bookmarks Tools Help

http://192.168.10.33/web/advanced/ftp_setting.asp?id=1297905

D-LINK

DNS-323 // SETUP ADVANCED TOOLS STATUS SUPPORT

USERS GROUPS QUOTAS NETWORK ACCESS FTP SERVER UPnP AV SERVER iTunes SERVER DHCP SERVER

FTP SERVER SETTINGS :

Assign permissions for users and groups who will be accessing the FTP server from over the Internet.

Save Settings Don't Save Settings

FTP SERVER SETTINGS :

Category User Group

User Please select a user All accounts

Folder root Browse

Permission Read Only

Max User 05

Idle Time 2 (1~10 Minutes)

Port 21 (1~65535,Default:21)

Flow Control Unlimited x 10 KBs

FTP ACCESS LIST :

Read/Write Read Only Modify Setting Delete

Path	User/Group	R/W

FTP SERVER STATUS :

Status Stopped

Port 21

Max User 5

Flow Control Unlimited

Idle Time 2 Minutes

Start FTP Server

Done

dlink-7DDAAF - Mozilla Firefox

File Edit View Go Bookmarks Tools Help

http://192.168.10.33/web/advanced/ftp_setting.asp?id=1297905

D-LINK

DNS-323 // SETUP ADVANCED TOOLS STATUS SUPPORT

USERS GROUPS QUOTAS NETWORK ACCESS FTP SERVER UPnP AV SERVER iTunes SERVER DHCP SERVER

FTP SERVER SETTINGS :

Assign permissions for users and groups who will be accessing the FTP server from over the Internet.

Save Settings Don't Save Settings

FTP SERVER SETTINGS :

Category User Group

Group Please select a group

Folder root Browse

Permission Read Only

Max User 05

Idle Time 2 (1~10 Minutes)

Port 21 (1~65535,Default:21)

Flow Control Unlimited x 10 KBs

FTP ACCESS LIST :

Read/Write Read Only Modify Setting Delete

Path	User/Group	R/W

FTP SERVER STATUS :

Status Stopped

Port 21

Max User 5

Flow Control Unlimited

Idle Time 2 Minutes

Start FTP Server

Done

dlink-7DDAAF - Mozilla Firefox

http://192.168.10.33/web/advanced/ftp_setting.asp?id=1297905

D-LINK

DNS-323 // SETUP ADVANCED TOOLS STATUS SUPPORT

USERS GROUPS QUOTAS NETWORK ACCESS FTP SERVER UPnP AV SERVER iTunes SERVER DHCP SERVER

FTP SERVER SETTINGS :

Assign permissions for users and groups who will be accessing the FTP server from over the Internet.

Save Settings Don't Save Settings

FTP SERVER SETTINGS :

Category User Group

User Please select a user All accounts

Folder root Browse

Permission Read Only

Max User 05
01
02 (~10 Minutes)
03
04 (~65535,Default:21)
05
06 Unlimited x 10 KBs
07
08
09
10

FTP ACCESS

Read/Write Read Only Modify Setting Delete

Path	User/Group	R/W

FTP SERVER STATUS :

Status Stopped

Port 21

Max User 5

Flow Control Unlimited

Idle Time 2 Minutes

Start FTP Server

Helpful Hint: If your DNS-323 is connected to the Internet, you will need to forward the FTP server port (in the router configuration) to the WAN address of the DNS-323. From the outside, you will need to remember to connect to the FTP server by WAN address of the router.

dlink-7DDAAF - Mozilla Firefox

http://192.168.10.33/web/advanced/upnp_av.asp?id=1088089

Product Page: DNS-323 Firmware Version: V1.00

D-LINK

DNS-323 // SETUP ADVANCED TOOLS STATUS SUPPORT

USERS GROUPS QUOTAS NETWORK ACCESS FTP SERVER UPnP AV SERVER iTunes SERVER DHCP SERVER

UPnP AV SERVER SETTINGS :

Set a path to your media content.

Save Settings Don't Save Settings Refresh

UPnP AV SERVER SETTINGS :

UPnP AV Server Enable Disable

Folder root
dlink-7DDAAF_SHARE

Helpful Hint: After adding content to the server, click the refresh button.

dlink-7DDAAF - Mozilla Firefox

http://192.168.10.33/web/advanced/iTunesServ.asp?id=9989246

Product Page: DNS-323 Firmware V

D-Link

DNS-323 // SETUP ADVANCED TOOLS STATUS SUPPORT LO

USERS
GROUPS
QUOTAS
NETWORK ACCESS
FTP SERVER
UPnP AV SERVER
iTunes SERVER
DHCP SERVER

iTunes SERVER SETTINGS :

Configure iTunes server settings for streaming music directly to iTunes software.

Save Settings Don't Save Settings Refresh

iTunes SERVER SETTINGS :

iTunes Server Enable Disable

Folder root

Password

Helpful Hints
iTunes will automatically detect the DNS-323 network. It will be on the left side of the program, below the menu bar.

Done

dlink-7DDAAF - Mozilla Firefox

http://192.168.10.33/web/home/dhcp.asp?id=2182570

Product Page: DNS-323 Firmware V

D-Link

DNS-323 // SETUP ADVANCED TOOLS STATUS SUPPORT LO

USERS
GROUPS
QUOTAS
NETWORK ACCESS
FTP SERVER
UPnP AV SERVER
iTunes SERVER
DHCP SERVER

DHCP SERVER SETTINGS :

Enable the DHCP server to distribute IP addresses on the network.

Save Settings Don't Save Settings Refresh

DHCP SERVER :

DHCP Server : Enabled Disabled

Starting IP Address :

Ending IP Address :

Lease Time :

DHCP CLIENT LIST :

Host name	IP Address	MAC Address	Expired Time

Helpful Hints
If you already have a DHCP router assigned to the network, you should not enable this DHCP server. The DHCP server should be disabled if no other DHCP server is available.

Done

Product Page: DNS-323

D-Link

DNS-323 // SETUP ADVANCED **TOOLS** STATUS SUPPORT LOG

ADMIN PASSWORD

TIME

SYSTEM

FIRMWARE

E-MAIL ALERTS

POWER MANAGEMENT

RAID

ADMINISTRATOR SETTINGS :

Set the administrator's password.

Save Settings Don't Save Settings

ADMINISTRATOR :

User Name : admin

Password :

New Password :

Confirm Password :

Helpful Hints...

For security reasons, we recommend that you change the Administrator's Password to avoid the event that it is forgotten.

Done

Product Page: DNS-323

D-Link

DNS-323 // SETUP ADVANCED **TOOLS** STATUS SUPPORT LOG

ADMIN PASSWORD

TIME

SYSTEM

FIRMWARE

E-MAIL ALERTS

POWER MANAGEMENT

RAID

SYSTEM TIME SETTINGS :

Set the system time by synchronizing with NTP, synchronizing with your computer, or manually entering it.

Time: 19:10:32 Date: 07/31/07

NTP SERVER :

NTP Server << Select NTP Server

Time Zone (GMT-08:00) Pacific Time (US & Canada);Tijuana

FROM MY COMPUTER :

Set time from my computer.

SET THE DATE AND TIME MANUALLY :

Month 07 Day 31 Year 2007

Hour 19 Minute 10 Second 29

DAYLIGHT SAVING TIME :

Daylight Saving Time : None

Helpful Hints...

Using the NTP option guarantees the most accurate time provided. DNS-323 is connected to the Internet and the values in SETUP are valid.

Done

dlink-7DDAAF - Mozilla Firefox

http://192.168.10.33/web/tools/timezone.asp?id=8391123

Product Page: DNS-323 Firmware Ver

D-Link

DNS-323 // SETUP ADVANCED **TOOLS** STATUS SUPPORT LOG

ADMIN PASSWORD TIME SYSTEM FIRMWARE E-MAIL ALERTS POWER MANAGEMENT RAID

SYSTEM TIME SETTINGS :

Set the system time by syncing with NTP, syncing with your computer, or manually entering it.

Time: 19:10:44 Date: 07/31/07

NTP SERVER :

NTP Server << Select NTP Server
 Time Zone (GMT-08:00) Pacific Time (US ntp1.dlink.com ntp.dlink.com.tw) Set Time

FROM MY COMPUTER :

Set time from my computer. Set Time

SET THE DATE AND TIME MANUALLY :

Month 07 Day 31 Year 2007
 Hour 19 Minute 10 Second 29 Set Time

DAYLIGHT SAVING TIME :

Daylight Saving Time : None Set Time

Helpful Hints... Using the NTP of guarantees the t accurate provid DNS-323 is conn the Internet and values (n SETUP are valid.

Done

dlink-7DDAAF - Mozilla Firefox

http://192.168.10.33/web/tools/timezone.asp?id=8391123

Product Page: DNS-323 Firmware Ver

D-Link

DNS-323 // SETUP ADVANCED **TOOLS** STATUS SUPPORT LOG

ADMIN PASSWORD TIME SYSTEM FIRMWARE E-MAIL ALERTS POWER MANAGEMENT RAID

SYSTEM TIME SETTINGS :

Set the system time by syncing with NTP, syncing with your computer, or manually entering it.

Time: 19:10:59 Date: 07/31/07

NTP SERVER :

NTP Server << Select NTP Server
 Time Zone (GMT-08:00) Pacific Time (US &Canada);Tijuana Set Time

FROM MY COMPUTER :

Set time from my computer. Set Time

SET THE DATE AND TIME MANUALLY :

Month 07 Day 31 Year 2007
 Hour 19 Minute 10 Second 29 Set Time

DAYLIGHT SAVING TIME :

Daylight Saving Time : None USA EU Set Time

Helpful Hints... Using the NTP of guarantees the t accurate provid DNS-323 is conn the Internet and values (n SETUP are valid.

Done

Product Page: DNS-323

D-Link

DNS-323 // SETUP ADVANCED **TOOLS** STATUS SUPPORT LOG

ADMIN PASSWORD TIME SYSTEM FIRMWARE E-MAIL ALERTS POWER MANAGEMENT RAID

SYSTEM SETTINGS :
Restart the system, restore to factory defaults, save or load configuration settings, and change the idle time.

RESTART :
System Restart.

DEFAULTS :
Restore To Factory Default Settings.

SHUTDOWN :
System shutdown.

CONFIGURATION SETTINGS :
Save Configuration Settings.
Load Configuration Settings.

IDLE TIME :
Config Inactivity Timer (Minutes)
Download Schedule Inactivity Timer

Helpful Hint: If you restore factory default settings, current settings will be erased.

Done

Product Page: DNS-323

D-Link

DNS-323 // SETUP ADVANCED **TOOLS** STATUS SUPPORT LOG

ADMIN PASSWORD TIME SYSTEM FIRMWARE E-MAIL ALERTS POWER MANAGEMENT RAID

FIRMWARE UPGRADE :
A new firmware upgrade may be available for your DNS-323. It is recommended to keep your DNS-323 firmware up-to-date to maintain and improve the functionality and performance of your storage device.
Click here [D-Link Support Page](#) to check for the latest firmware version available.
To upgrade the firmware on your DNS-323, please download and save the latest firmware version from the [D-Link Support Page](#) to your local hard drive. Locate the file on your local hard drive by clicking the Browse button. Once you have found and opened the file using the browse button, click the Apply button to start the firmware upgrade.

Helpful Hints...
Firmware updates are released periodically to maintain and improve the functionality and performance of DNS-323 and other features. If you have a problem with a feature of the D-Link product, please check our support page for the latest information on an updated firmware version available for you.

CURRENT FIRMWARE INFO :
Current Firmware Version : 1.03
Firmware Date : 03/30/2007
File Path :

Done

dlink-7DDAAF - Mozilla Firefox
http://192.168.10.33/web/tools/mail_alerts.asp?id=6375523

Product Page: DNS-323 Firmware Ver

D-Link

DNS-323 // SETUP ADVANCED **TOOLS** STATUS SUPPORT LOG

ADMIN PASSWORD
TIME
SYSTEM
FIRMWARE
E-MAIL ALERTS
POWER MANAGEMENT
RAID

E-MAIL ALERTS :

E-mail yourself alerts for certain conditions or for drive space status updates.

Save Settings Don't Save Settings Clear Saved Settings

E-MAIL ALERT SETTINGS :

Login Method : Account Anonymous

User Name :
Password :
SMTP Server :
Sender E-mail :
Receiver E-mail :

Test E-Mail

ALERT TYPES :

Space Status Interval: 0 (Hours) 0 (Minutes)
 A Volume Is Full
 A Hard Drive Has Failed
 The Administrator's Password Has Been Changed
 Firmware Has Been Upgraded
 System Temperature Has Exceeded 140 °F
Enabling this feature will cause the DNS-323 to shut down after the selected temperature is exceeded and an e-mail is sent.

Helpful Hints...
The SMTP server outgoing mail service aren't sure what you contact the company provides e-mail service you.

Done

dlink-7DDAAF - Mozilla Firefox
http://192.168.10.33/web/advanced/power_management.asp?id=5242872

Product Page: DNS-323 Firmware Ver

D-Link

DNS-323 // SETUP ADVANCED **TOOLS** STATUS SUPPORT LOG

ADMIN PASSWORD
TIME
SYSTEM
FIRMWARE
E-MAIL ALERTS
POWER MANAGEMENT
RAID

POWER MANAGEMENT SETTINGS :

Enabling this feature will cause the hard drives to hibernate after the specified time of inactivity. They will wake-up when new activity is detected.

Save Settings Don't Save Settings

POWER MANAGEMENT SETTINGS :

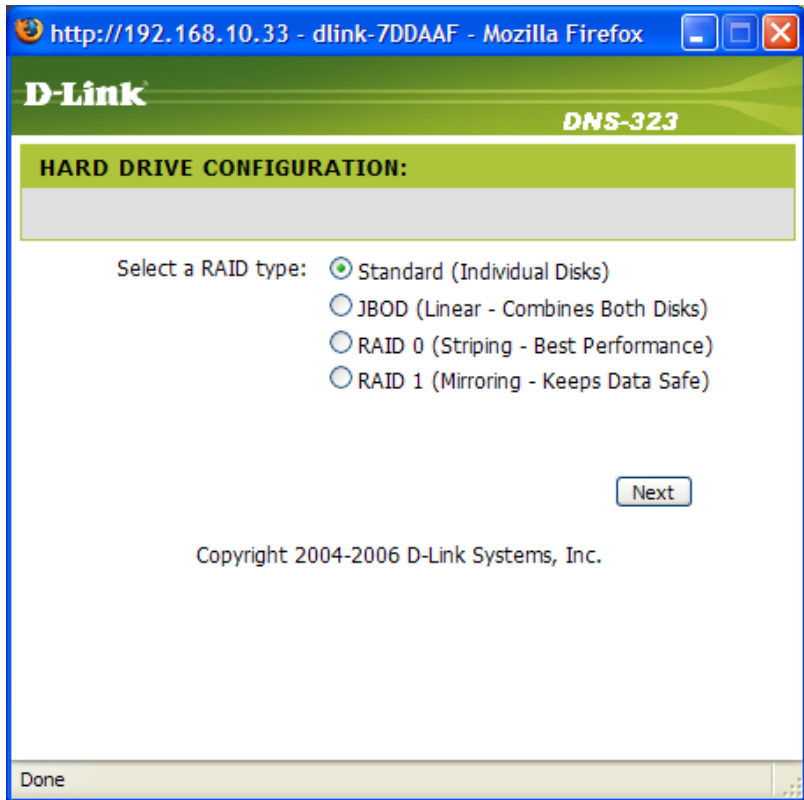
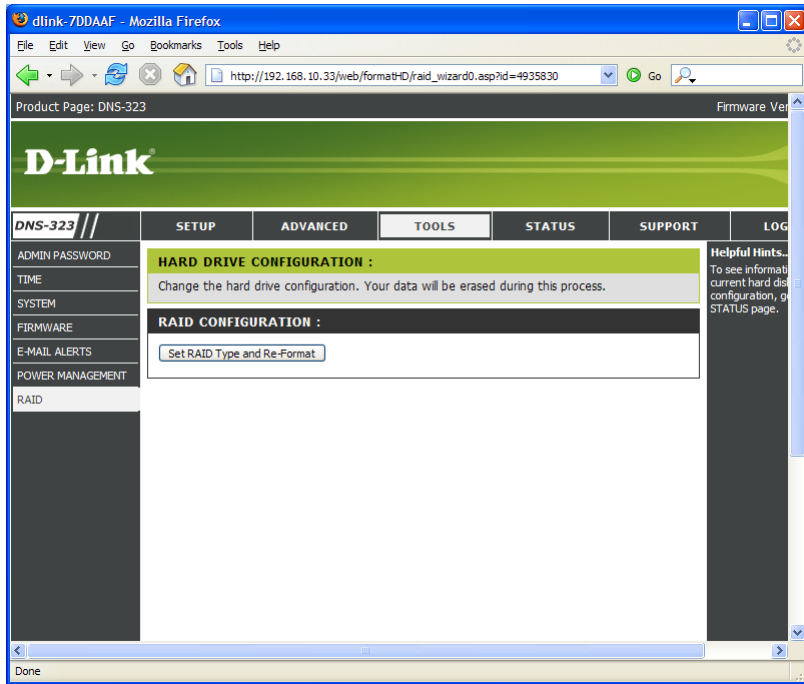
Power Management : Enable Disable

Turn Off Hard Drives :

- After 5 mins
- After 10 mins
- After 15 mins
- After 20 mins
- After 25 mins
- After 30 mins

Helpful Hints...
Save on electric and extend the hard drives by using power management.

Done



dlink-7DDAAF - Mozilla Firefox

File Edit View Go Bookmarks Tools Help

http://192.168.10.33/web/status/device_status.asp?id=9727751

Product Page: DNS-323 Firmware Ver

D-Link

DNS-323 // SETUP ADVANCED TOOLS STATUS SUPPORT LOG

DEVICE INFO

DEVICE INFORMATION :
View a summary of device information here.

LAN INFO :

IP Address:	192.168.10.33
Subnet Mask:	255.255.255.0
Gateway IP Address:	192.168.10.254
Mac Address:	00:19:5B:7D:DA:AF

DEVICE INFO :

Workgroup:	workgroup
Name:	dlink-7DDAAF
Description:	DNS-323
System Temperature:	102 F / 39 C

PRINTER INFO :

Manufacturer:	None
Product:	None

HARD DRIVE INFO :

Volume Name:	Volume_1
Volume Type:	Linear
Total Hard Drive Capacity:	156465 MB
Used Space:	21 MB
Unused Space:	156444 MB

Done