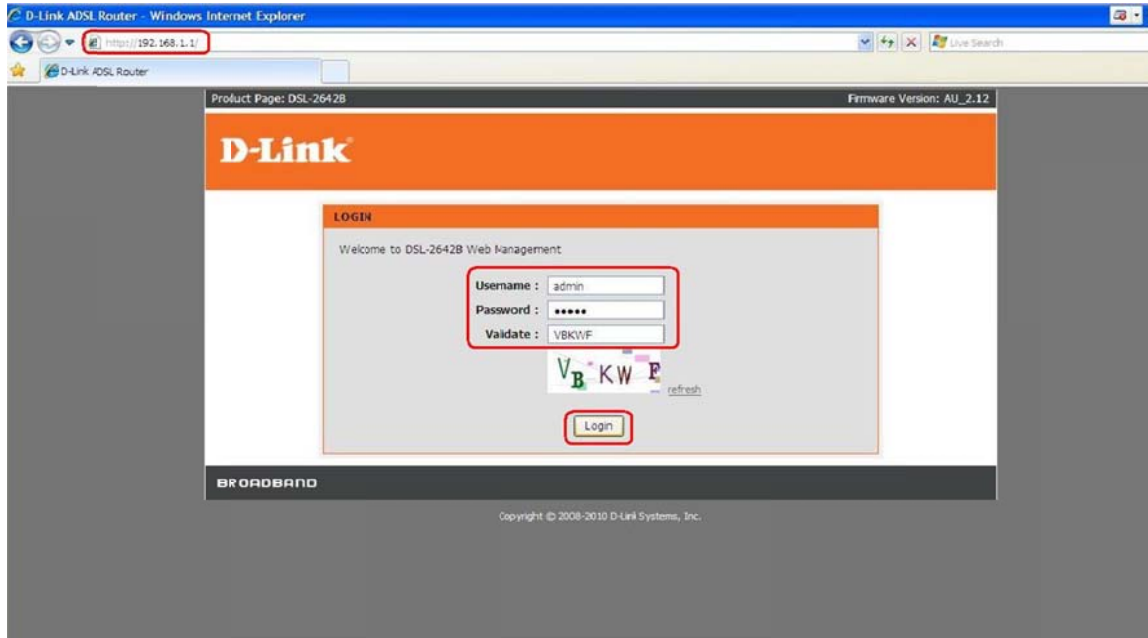


DSL-2642B – How to connect via ADSL 1

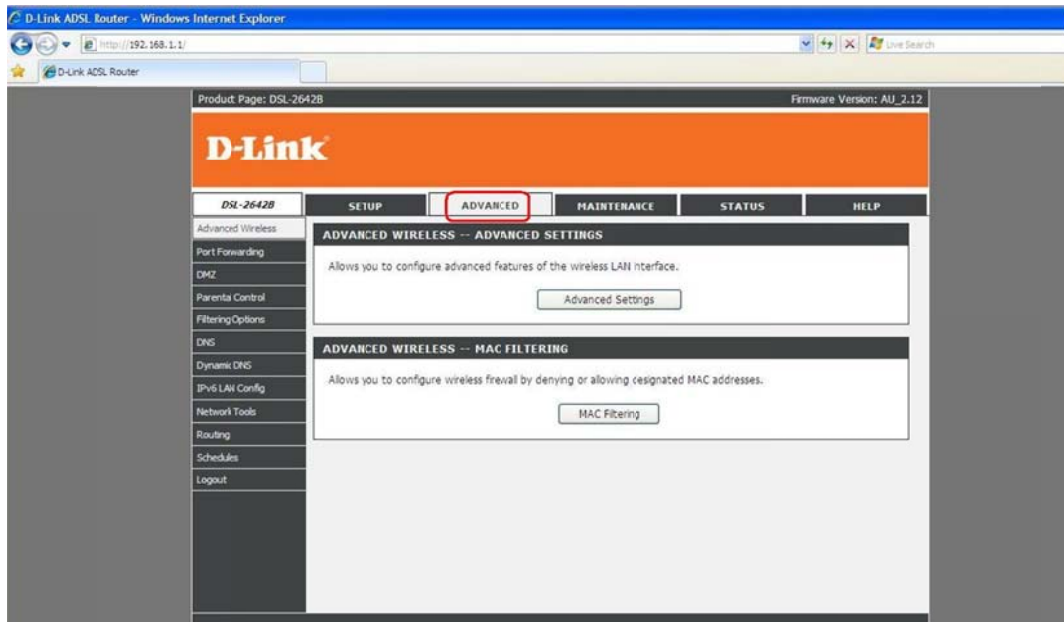


This document shows how to disable ADSL 2 / 2+ and connect via ADSL 1

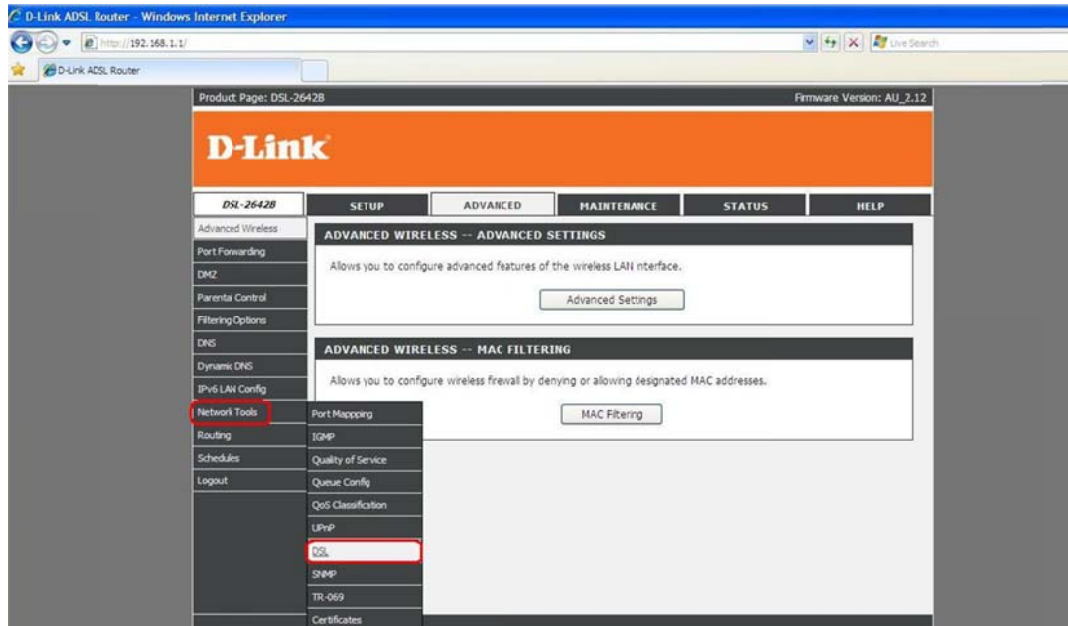
1. Log in to the router setup page with the computer connected to the Ethernet port.
 - URL: <http://192.168.1.1> (default)
 - Username: admin
 - Password: admin (default)
 - Validate Code: (randomly generated)



2. Click **ADVANCED** on the top menu.

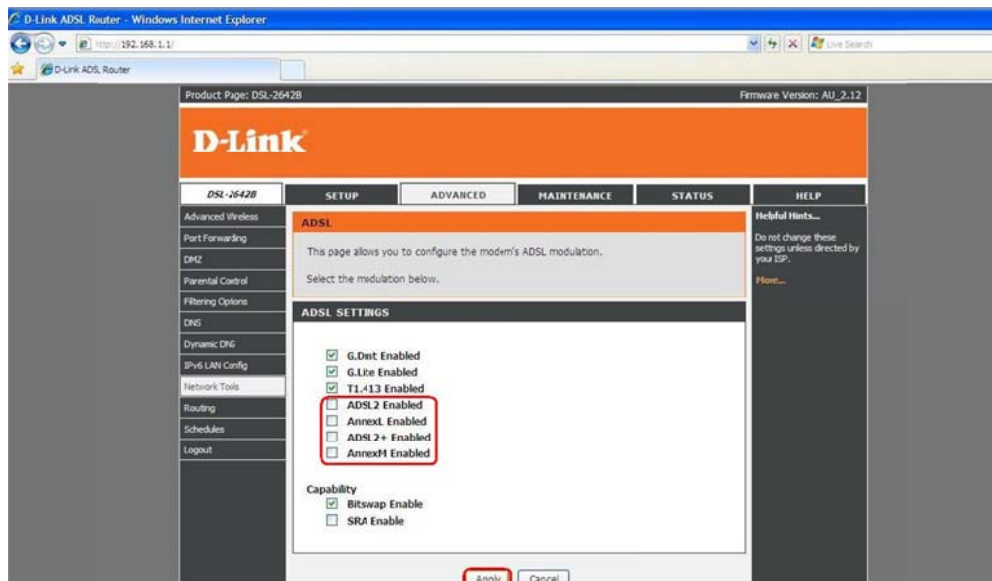


2a. Then click **Network Tools > DSL** at the sub-menu



2b. Uncheck the boxes for the following options

- **ADSL2 Enabled**
- **AnnexL Enabled**
- **ADSL2+ Enabled**
- **AnnexM Enabled**



3b. Click **Apply**