

D-Link[®]

TECH SUPPORT

How to refresh a Wireless Profile on your computer

This document details how to delete the old Wi-Fi connection profile stored on your computer so it does not conflict with your new Wi-Fi connection

When you connect to a wireless network, the settings and profile of that specific network is saved on your computer so that you don't have to re-enter your Wi-Fi password every time you reconnect. Once your computer is in the range of the saved wireless network, it will automatically attempt to connect to that wireless network.

If you have connected to various wireless networks before, your computer may have problems connecting wirelessly, especially when the wireless networks use the same names (SSID). Removing wireless network profiles on your computer may improve your wireless connectivity to your current wireless network.

Please NOTE: Removing Wi-Fi network profiles cannot be undone. Make sure you know the wireless settings of your wireless network (your network name and Wi-Fi password) to be able to reconnect to it.

This document will guide you through the steps on how to remove wireless network profiles on your computer. The guides are available for the following Operating Systems:

[Windows XP](#)

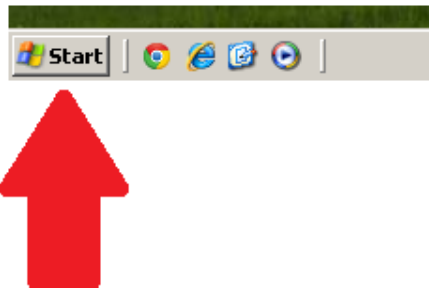
[Windows 7](#)

[Windows 8](#)

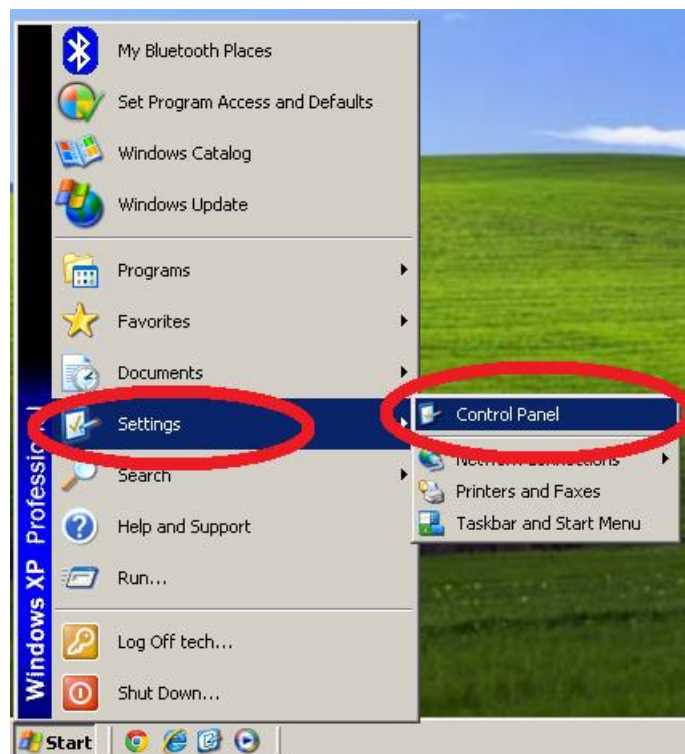
[Mac OS X](#)

How to refresh a Wireless Profile in Windows XP.

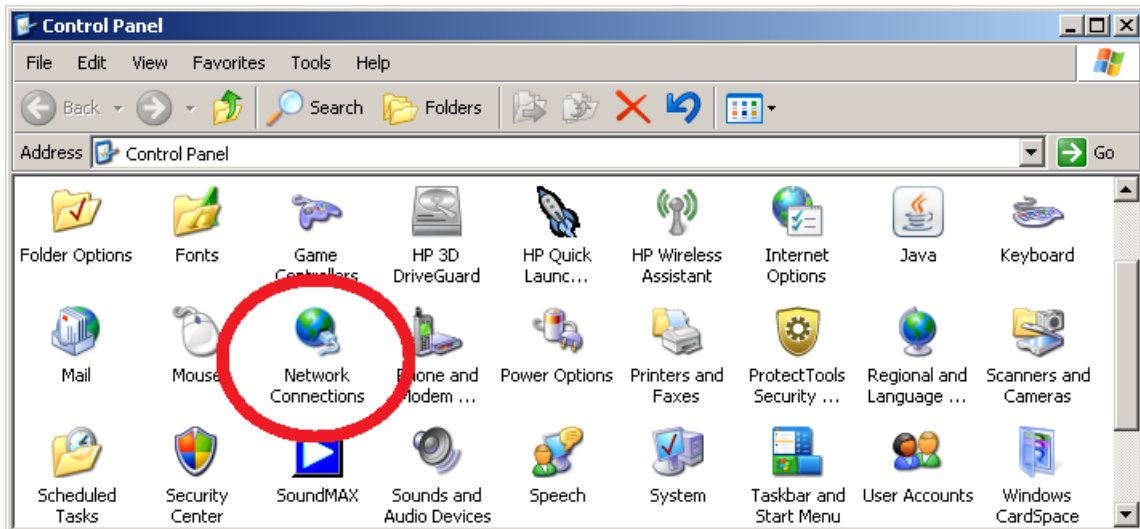
1. Click on the Windows XP Start button:



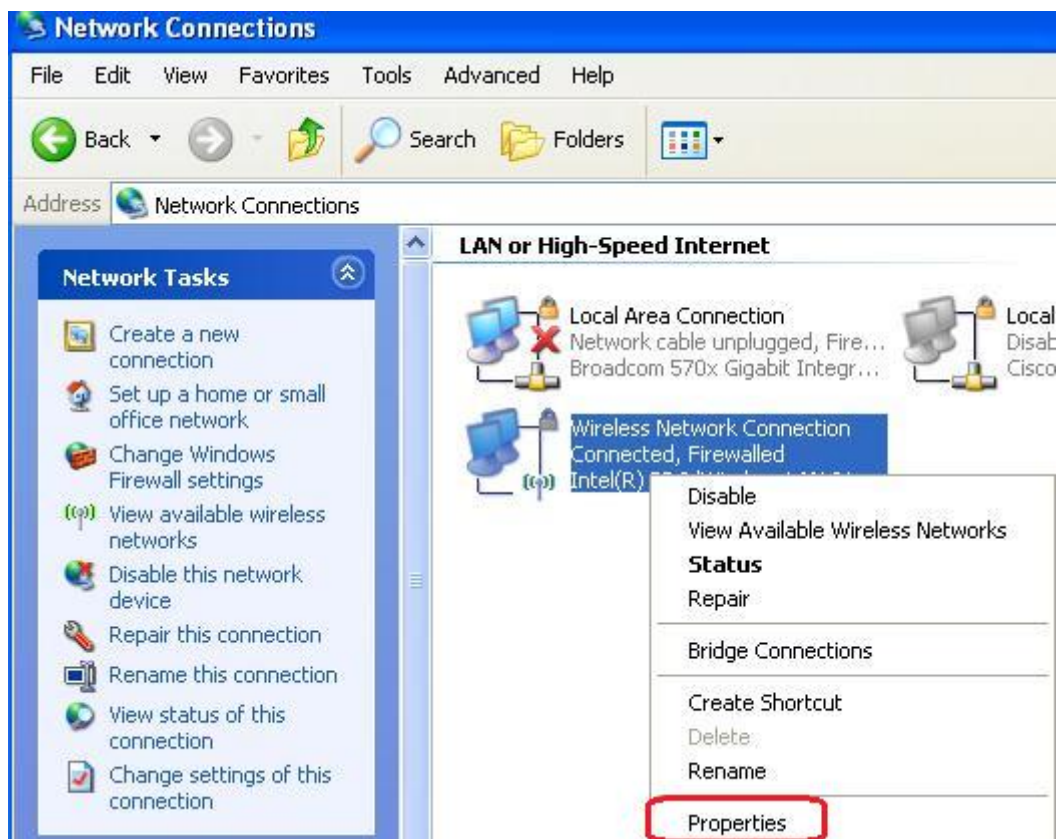
2. Click on Settings > **Control Panel**:



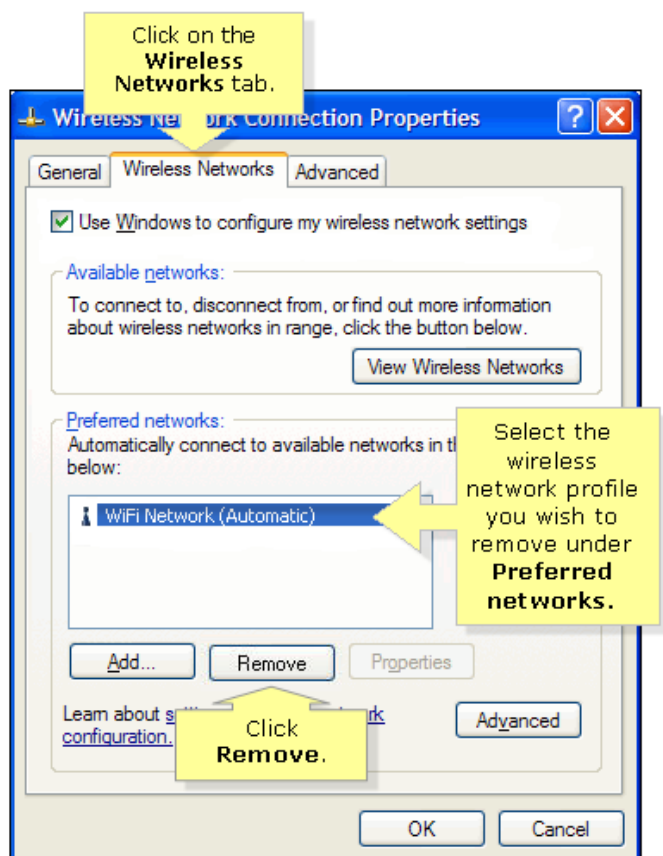
3. Click on **Network Connections**:



4. Right click on your **Wireless Network Connection** and select **Properties**:



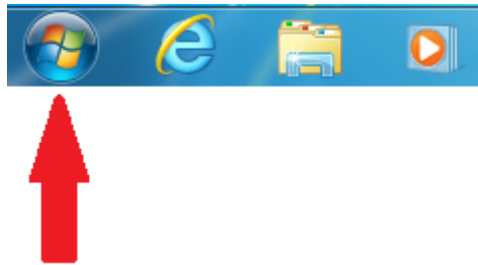
5. Choose **Wireless Networks** tab and select existing network in preferred networks, then click **Remove**. And click on OK.



Now connect to the required Wireless Network manually and a fresh automatic profile will be created for this network.

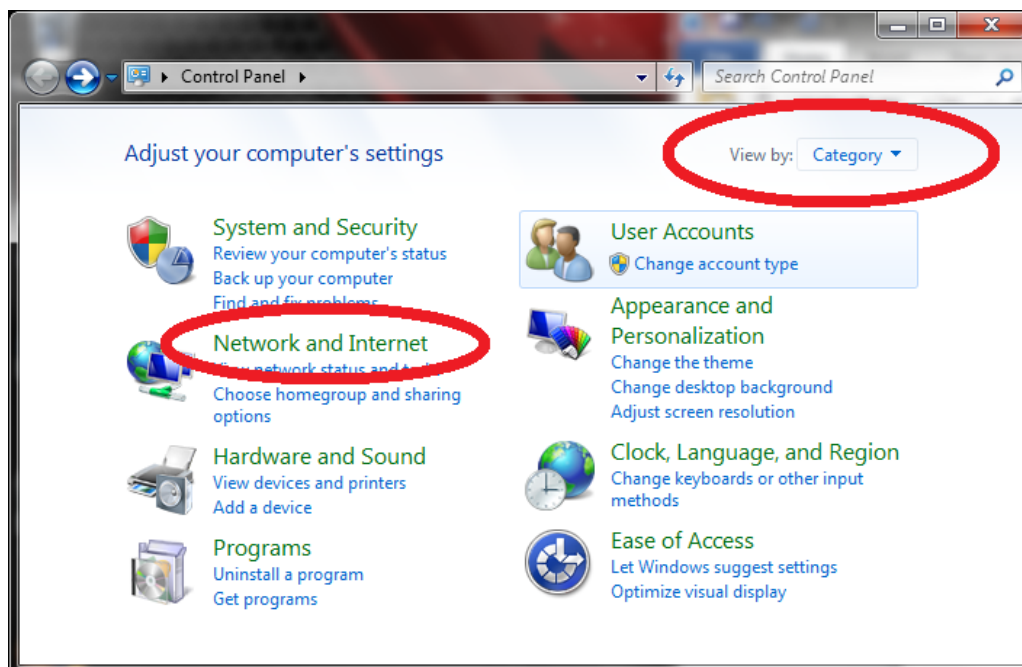
How to refresh a Wireless Profile in Windows 7.

1. Click on the Windows 7 Start button:

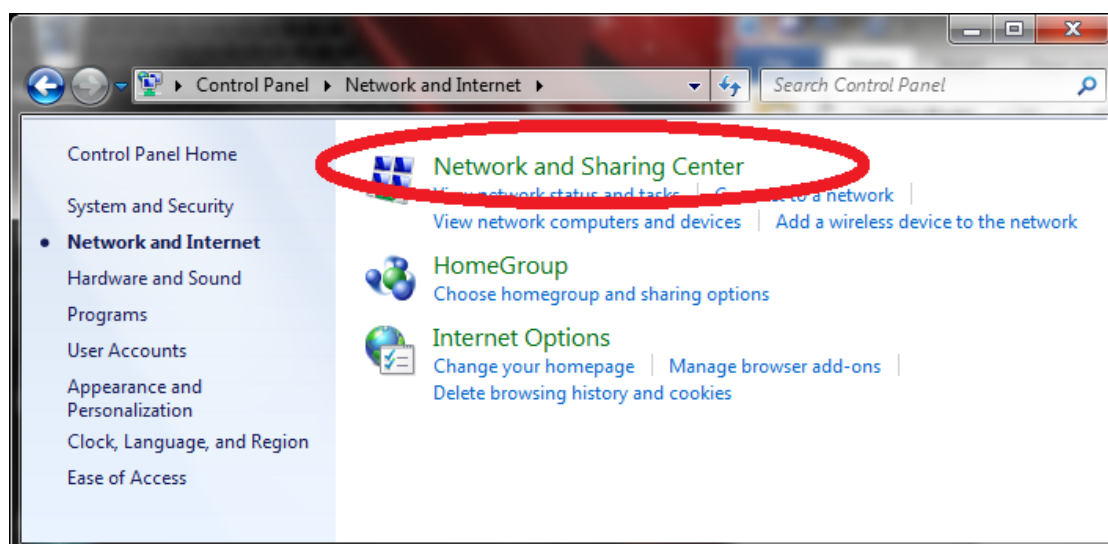


2. Select **Control Panel**.

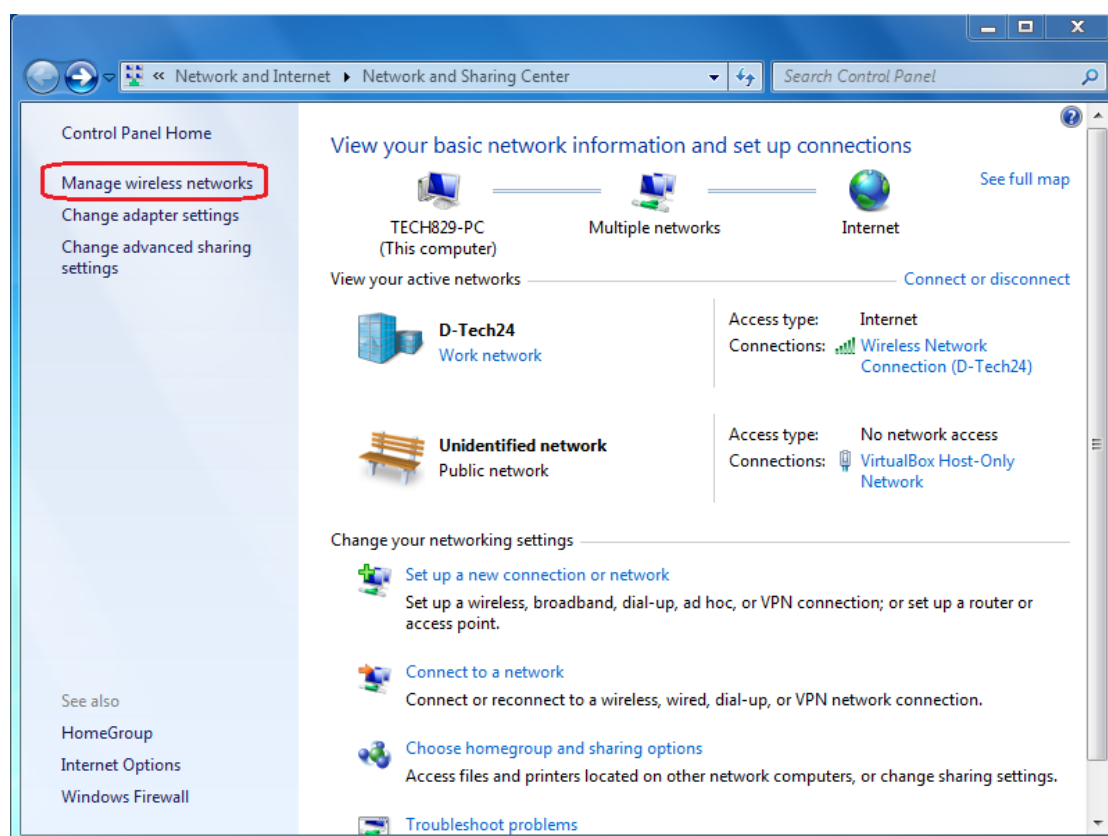
3. Make sure your **View by:** is set to "Category", and then click on **Network and Internet**:



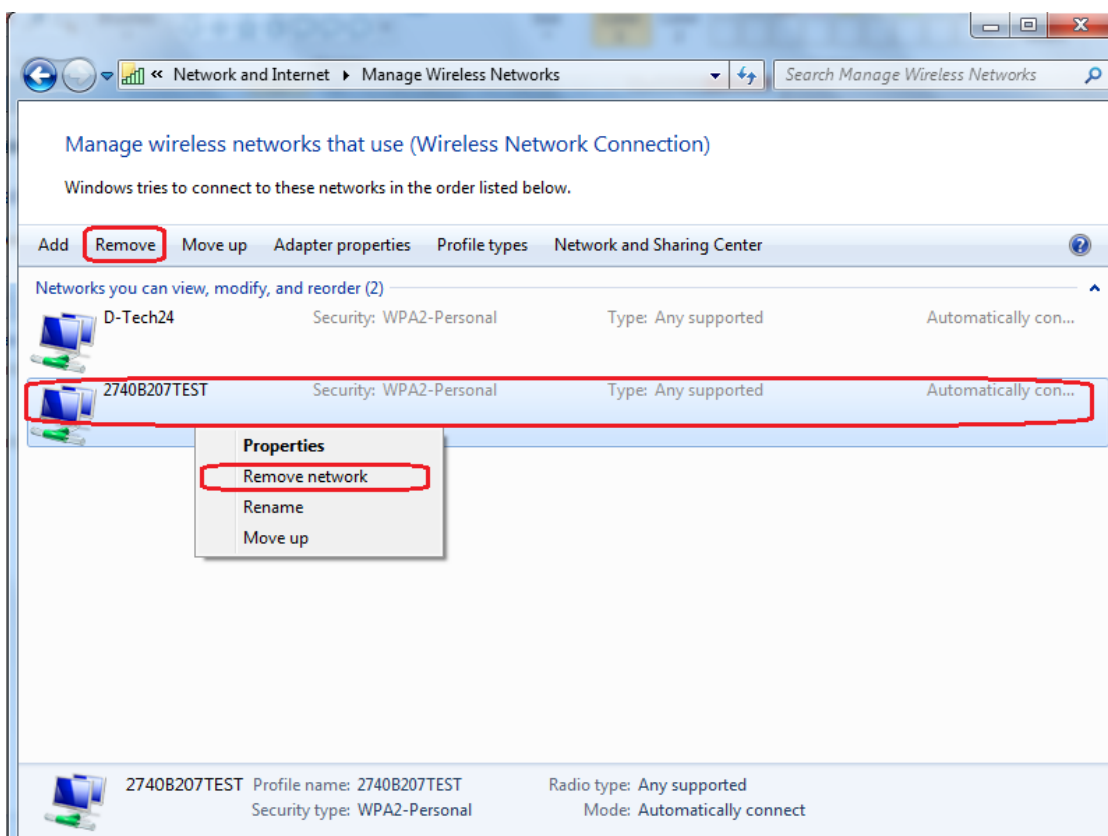
4. Click on **Network and Sharing Center**:



5. Click on **Manage wireless networks**.



6. Select the network profile you wish to remove, make sure it is highlighted then click **Remove**. You can also right click on the network profile and click on **Remove network**

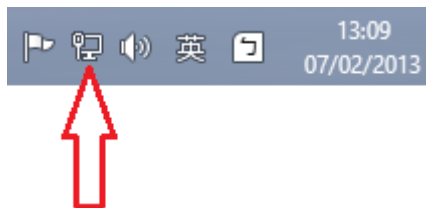


Now connect to the required Wireless Network manually and a fresh automatic profile will be created for this network.

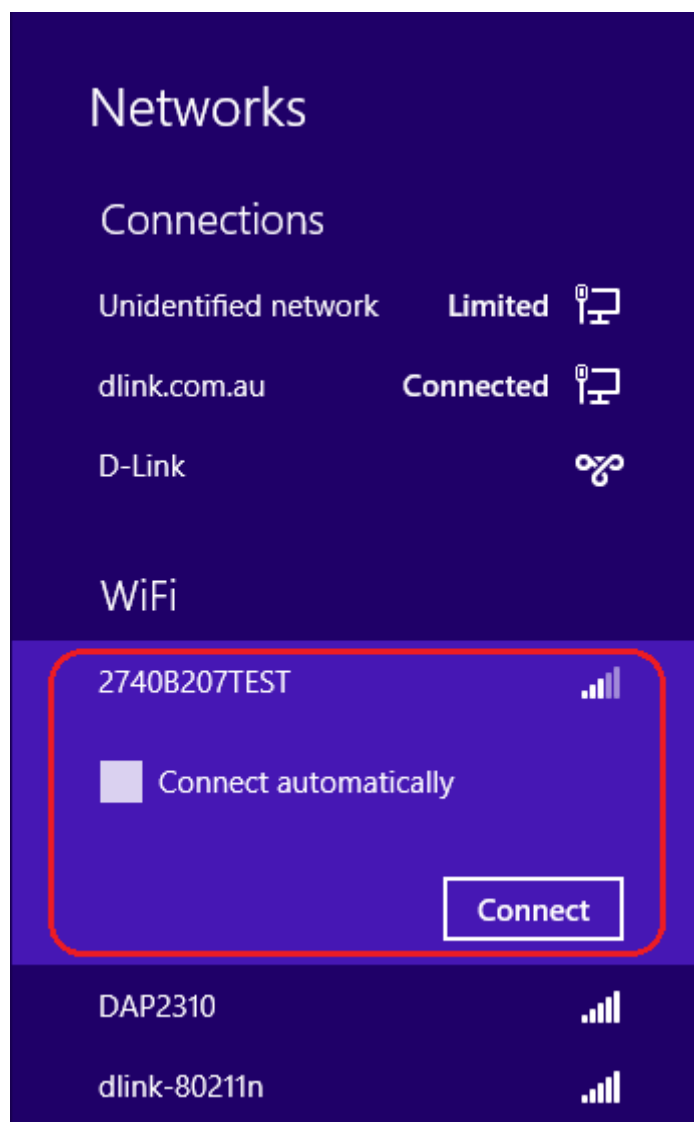
How to refresh a Wireless Profile in Windows 8.

1. Left click on the Windows 8 network status icon :

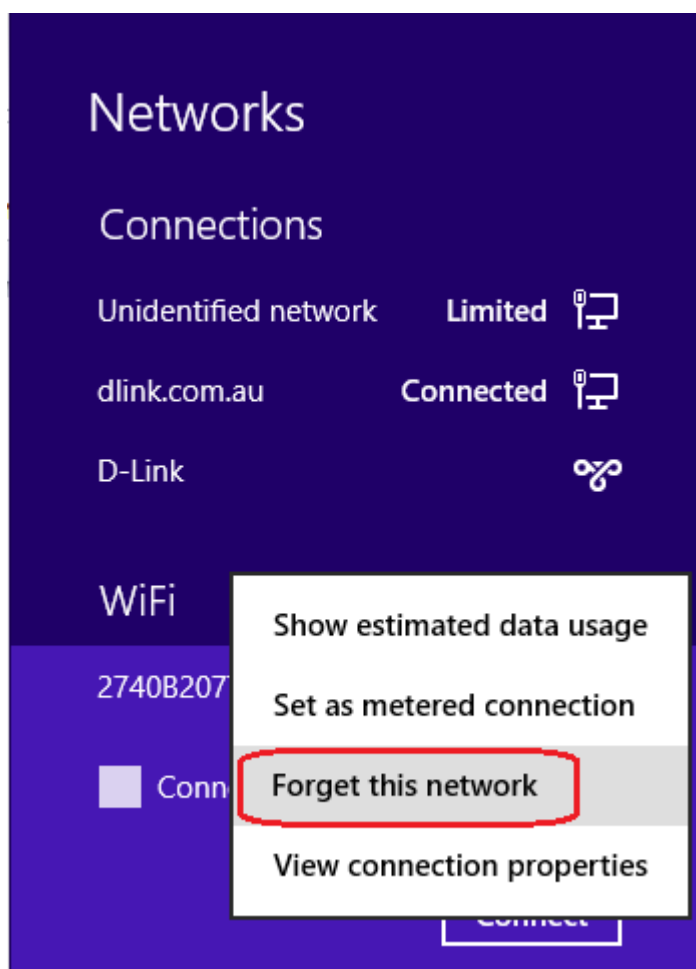
The icon is located at the right hand bottom corner of the screen



2. Highlight the wireless network that you wish to remove.



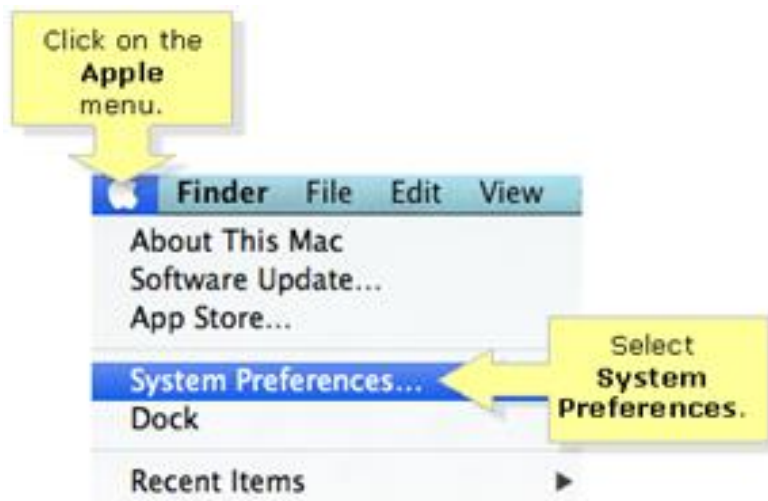
3. Right-click the network in the network list and click **Forget this network**.



Now connect to the required Wireless Network manually and a fresh automatic profile will be created for this network.

How to refresh a Wireless Profile in OS X.

1. Click on the **Apple** menu and select **System Preferences**.



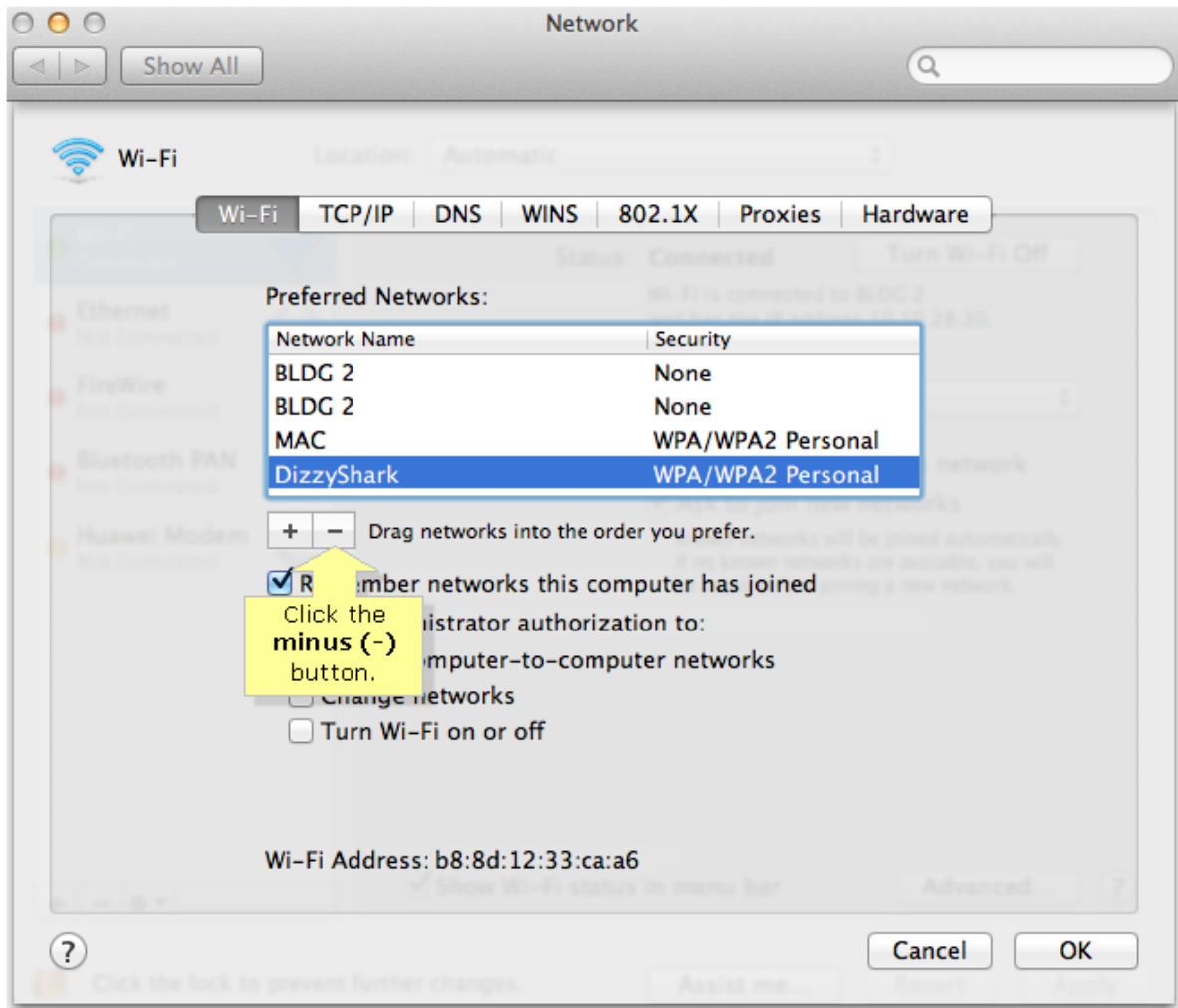
2. In the System Preferences menu, click on **Network**.



3. Click on the **Advanced...** button.



4. Select the wireless profile you wish to remove under the **Preferred Networks** box, make sure it is highlighted then click the **minus (-)** button.



Now connect to the required Wireless Network manually and a fresh automatic profile will be created for this network.