



LOGIN

Log in to the router

User Name :

Password :

Remember my login info. on this computer

BROADBAND



DSL-2740B //	SETUP	ADVANCED	MAINTENANCE	STATUS	HELP
Wizard	<p>SETTING UP YOUR INTERNET</p> <p>There are two ways to set up your Internet connection: you can use the Web-based Internet Connection Setup Wizard, or you can manually configure the connection.</p> <p>Please make sure you have your ISP's connection settings first if you choose to setup manually.</p>				<p>Helpful Hints...</p> <p>If you are new to networking and have never configured a router before, click on "setup wizard" and the router will run you through a step by step process to successfully connect you to the internet.</p> <p>If you consider yourself an advanced user or have configured a router before, click Setup->Internet Setup to input all the settings manually.</p> <p>More...</p>
Internet Setup	<p>INTERNET CONNECTION WIZARD</p> <p>You can use this wizard for assistance and quick connection of your new D-Link Router to the Internet. You will be presented with step-by-step instructions in order to get your Internet connection up and running. Click the button below to begin.</p> <p style="text-align: center;"><input type="button" value="Setup Wizard"/></p> <p>Note: Before launching the wizard, please ensure you have correctly followed the steps outlined in the Quick Installation Guide included with the router.</p>				
Wireless Settings					
Local Network					
Time and Date					
Logout					

BROADBAND



DSL-2740B //	SETUP	ADVANCED	MAINTENANCE	STATUS	HELP
Wizard	<p>WELCOME TO D-LINK SETUP WIZARD</p> <p>This wizard will guide you through a step-by-step process to configure your new D-Link router and connect to the Internet.</p> <ul style="list-style-type: none"> • Step 1 : Change Device Login Password • Step 2 : Set Time and Date • Step 3 : Setup Internet Connection • Step 4 : Configure Wireless Network • Step 5 : Configure Local Network • Step 6 : Completed and Restart <p style="text-align: center;"> <input type="button" value="Next"/> <input type="button" value="Cancel"/> </p>				
Internet Setup					
Wireless Settings					
Local Network					
Time and Date					
Logout					
BROADBAND					



DSL-2740B //	SETUP	ADVANCED	MAINTENANCE	STATUS	HELP
Wizard	<p>STEP 1: CHANGE DEVICE LOGIN PASSWORD > 2 > 3 > 4 > 5 > 6</p> <p>The factory default password of this router is admin. To help secure your network, D-Link recommends that you should choose a new password. If you do not wish to choose a new password now, just Click Skip to continue. Click Next to proceed to next step.</p> <p style="text-align: center;"> Current password : <input type="text"/> New password : <input type="text"/> Confirm password : <input type="text"/> </p> <p style="text-align: center;"> <input type="button" value="Back"/> <input type="button" value="Next"/> <input type="button" value="Skip"/> <input type="button" value="Cancel"/> </p>				
Internet Setup					
Wireless Settings					
Local Network					
Time and Date					
Logout					
BROADBAND					



DSL-2740B //	SETUP	ADVANCED	MAINTENANCE	STATUS	HELP															
Wizard	<p>1 > STEP 2: SET TIME AND DATE > 3 > 4 > 5 > 6</p> <p>The Time Configuration option allows you to configure, update, and maintain the correct time on the internal system clock. From this section you can set the time zone that you are in and set the NTP (Network Time Protocol) Server. Daylight Saving can also be configured to automatically adjust the time when needed.</p> <p>TIME SETTINGS</p> <p><input type="checkbox"/> Automatically synchronize with Internet time servers</p> <p>First NTP time server: <input type="text" value="ntp1.dlink.com"/> <input type="text"/></p> <p>Second NTP time server: <input type="text" value="None"/> <input type="text"/></p> <p>TIME CONFIGURATION</p> <p>Current Router Time : 1.01.2000,00:05:05 Sat</p> <p>Time Zone : <input type="text" value="(GMT-12:00) International Date Line West"/></p> <p>Enable Daylight Saving : <input type="checkbox"/></p> <p>Daylight Saving Offset : <input type="text" value="-2:00"/></p> <p>Daylight Saving Dates :</p> <table border="0"> <tr> <td></td> <td>Month</td> <td>Week</td> <td>Day</td> <td>Time</td> </tr> <tr> <td>Start</td> <td><input type="text" value="Jan"/></td> <td><input type="text" value="1st"/></td> <td><input type="text" value="Sun"/></td> <td><input type="text" value="12 am"/></td> </tr> <tr> <td>End</td> <td><input type="text" value="Jan"/></td> <td><input type="text" value="1st"/></td> <td><input type="text" value="Sun"/></td> <td><input type="text" value="12 am"/></td> </tr> </table>					Month	Week	Day	Time	Start	<input type="text" value="Jan"/>	<input type="text" value="1st"/>	<input type="text" value="Sun"/>	<input type="text" value="12 am"/>	End	<input type="text" value="Jan"/>	<input type="text" value="1st"/>	<input type="text" value="Sun"/>	<input type="text" value="12 am"/>	<p>Helpful Hints...</p> <p>Good timekeeping is important for accurate logs and scheduled firewall rules.</p> <p>Click on the [Copy your Computer's ...] button will copy your PC's current time.</p> <p>More...</p>
	Month	Week	Day	Time																
Start	<input type="text" value="Jan"/>	<input type="text" value="1st"/>	<input type="text" value="Sun"/>	<input type="text" value="12 am"/>																
End	<input type="text" value="Jan"/>	<input type="text" value="1st"/>	<input type="text" value="Sun"/>	<input type="text" value="12 am"/>																
Internet Setup																				
Wireless Settings																				
Local Network																				
Time and Date																				
Logout																				
	<input type="button" value="Back"/> <input type="button" value="Next"/> <input type="button" value="Cancel"/>																			



DSL-2740B //	SETUP	ADVANCED	MAINTENANCE	STATUS	HELP
Wizard	<p>1 > 2 > STEP 3: SETUP INTERNET CONNECTION > 4 > 5 > 6</p> <p>Please select your Country and ISP (Internet Service Provider) from the list below. If your Country or ISP is not in the list, please select "Other".</p> <p>Country : <input type="text" value="Australia"/></p> <p>ISP Provider : <input type="text" value="Internode"/></p> <p>Protocol : <input type="text" value="PPPoE"/></p> <p>Connection Type : <input type="text" value="LLC"/></p> <p>VPI : <input type="text" value="8"/></p> <p>VCI : <input type="text" value="35"/></p> <p>Mtu : <input type="text" value="1492"/></p> <p><input type="checkbox"/> Enable DSL Auto-scan :</p>				
Internet Setup					
Wireless Settings					
Local Network					
Time and Date					
Logout					
	<input type="button" value="Back"/> <input type="button" value="Next"/> <input type="button" value="Cancel"/>				



DSL-2740B	SETUP	ADVANCED	MAINTENANCE	STATUS	HELP
Wizard	<p>1 > 2 > STEP 3: SETUP INTERNET CONNECTION > 4 > 5 > 6</p> <p>Please enter your Username and Password as provided by your ISP (Internet Service Provider). Please enter the information exactly as shown taking note of upper and lower cases. Click Next to continue.</p> <p>Username : <input type="text" value="test@isp.com.au"/></p> <p>Password : <input type="password" value="....."/></p> <p>Confirm Password : <input type="password" value="....."/></p> <p><input type="button" value="Back"/> <input type="button" value="Next"/> <input type="button" value="Cancel"/></p>				
Internet Setup					
Wireless Settings					
Local Network					
Time and Date					
Logout					
BROADBAND					



DSL-2740B	SETUP	ADVANCED	MAINTENANCE	STATUS	HELP
Wizard	<p>1 > 2 > 3 > STEP 4: CONFIGURE WIRELESS NETWORK > 5 > 6</p> <p>Your wireless network is enabled by default. You can simply uncheck to disable it and click "Next" to skip configuration of wireless network.</p> <p>Enable Your Wireless Network : <input checked="" type="checkbox"/></p> <p>Your wireless network needs a name so it can be easily recognized by wireless clients. For security purposes, it is highly recommended to change the pre-configured network name.</p> <p>Wireless Network Name (SSID) : <input type="text" value="DSL2740B"/></p> <p>Select "Visible" to publish your wireless network and SSID can be found by wireless clients, or select "Invisible" to hide your wireless network so that users need to manually enter SSID in order to your wireless network.</p> <p>Visibility Status: <input checked="" type="radio"/> Visible <input type="radio"/> Invisible</p> <p>In order to protect your network from hackers add unauthorized users, it is highly recommended you choose one of the following wireless network security settings.</p> <p>None <i>Security Level</i> Best</p> <p><input type="radio"/> None <input type="radio"/> WEP <input checked="" type="radio"/> WPA-PSK <input type="radio"/> WPA2-PSK</p> <p>Security Mode :WPA Select this option if you wireless adapters support WPA</p> <p>Now, please enter your wireless adapters support WPA</p> <p>WPA Pre-Shared Key : <input type="text" value="password"/> (8-63 characters, Example '%Fortress123&') Note: you will need to enter the same key here into your wireless clients in order to enable proper wireless connection.</p> <p><input type="button" value="Back"/> <input type="button" value="Next"/> <input type="button" value="Cancel"/></p>				
Internet Setup					
Wireless Settings					
Local Network					
Time and Date					
Logout					



DSL-2740B	SETUP	ADVANCED	MAINTENANCE	STATUS	HELP
-----------	-------	----------	-------------	--------	------

Wizard

Internet Setup

Wireless Settings

Local Network

Time and Date

Logout

1 > 2 > 3 > 4 > STEP 5: CONFIGURE LOCAL NETWORK > 6

Configure the DSL Router IP Address and Subnet Mask for LAN interface.

DEVICE SETUP

IP Address:

Subnet Mask:

Disable DHCP Server

Enable DHCP Server

Start IP Address:

End IP Address:

Leased Time (hour):

Configure the second IP Address and Subnet Mask for LAN interface

IP Address:

Subnet Mask:

BROADBAND



DSL-2740B	SETUP	ADVANCED	MAINTENANCE	STATUS	HELP
-----------	-------	----------	-------------	--------	------

Wizard

Internet Setup

Wireless Settings

Local Network

Time and Date

Logout

1 > 2 > 3 > 4 > 5 > STEP 6: COMPLETED AND RESTART

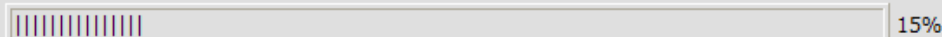
Setup complete. Click Back to review or modify settings. Click Restart to apply current settings and reboot the DSL-2740B router.

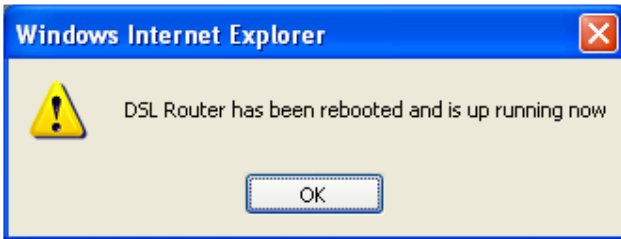
If your Internet connection does not work after restart, you can try the Setup Wizard again with alternative settings or use Manual Setup instead if you have your Internet connection details as provided by your ISP.

BROADBAND

DSL ROUTER REBOOT

The DSL Router has been configured and is rebooting. Please wait...
If necessary, reconfigure your PC's IP address to match your new configuration after reboot finishes.





- Wizard
- Internet Setup
- Wireless Settings
- Local Network
- Time and Date
- Logout

WAN

Choose Add, Edit, or Remove to configure WAN interfaces.
Choose Finish to apply the changes and reboot the system.

WAN SETUP

	VPI/VCI	Service	Protocol	IGMP	QoS	State	Edit	Action
<input type="checkbox"/>	8/35	pppoe_8_35_1	PPPoE	Disabled	Disabled	Enabled	Edit	<input type="button" value="UP"/>

PVC SELECTION

Set NAT&FIREWALL to the following PVC:



DSL-2740B	SETUP	ADVANCED	MAINTENANCE	STATUS	HELP
Wizard	<h3>WAN</h3> <p>This screen allows you to configure an ATM PVC identifier (VPI and VCI) and select a service category. Choose an existing interface by selecting the checkbox to enable it.</p> <h4>ATM PVC CONFIGURATION</h4> <p>VPI: [0-255] <input type="text" value="8"/></p> <p>VCI: [32-65535] <input type="text" value="35"/></p> <p>Service Category: <input type="text" value="UBR Without PCR"/></p> <h4>Enable Quality Of Service</h4> <p>Enabling packet level QoS for a PVC improves performance for selected classes of applications. QoS cannot be set for CBR and Realtime VBR. QoS consumes system resources; therefore the number of PVCs will be reduced. Use Advanced Setup/Quality of Service to assign priorities for the applications.</p> <p>Enable Quality Of Service <input type="checkbox"/></p> <p style="text-align: center;"> <input type="button" value="Back"/> <input type="button" value="Next"/> <input type="button" value="Cancel"/> </p>				<h4>Helpful Hints...</h4> <p>When configuring the router to access the Internet, be sure to choose the correct Connection Type from the list below. If you are unsure of which option to choose, contact your Internet Service Provider (ISP).</p> <p>If you are having trouble accessing the Internet through the router, double check any settings you have entered on this page and verify them with your ISP if needed.</p> <p>More...</p>
Internet Setup					
Wireless Settings					
Local Network					
Time and Date					
Logout					



DSL-2740B	SETUP	ADVANCED	MAINTENANCE	STATUS	HELP
Wizard	<h3>WAN</h3> <p>Select the type of network protocol and encapsulation mode over the ATM PVC that your ISP has instructed you to use. Note that 802.1q VLAN tagging is only available for PPPoE, MER and Bridging.</p> <h4>CONNECTION TYPE</h4> <p> <input type="radio"/> PPP over ATM (PPPoA) <input checked="" type="radio"/> PPP over Ethernet (PPPoE) <input type="radio"/> MAC Encapsulation Routing (MER) <input type="radio"/> IP over ATM (IPoA) <input type="radio"/> Bridging </p> <h4>Encapsulation Mode</h4> <p> <input type="text" value="LLC/SNAP-BRIDGING"/> <input type="text" value="LLC/SNAP-BRIDGING"/> <input type="text" value="VC/MUX"/> Enable 802.1q <input type="checkbox"/> </p> <p style="text-align: center;"> <input type="button" value="Back"/> <input type="button" value="Next"/> <input type="button" value="Cancel"/> </p>				<h4>Helpful Hints...</h4> <p>When configuring the router to access the Internet, be sure to choose the correct Connection Type from the list below. If you are unsure of which option to choose, contact your Internet Service Provider (ISP).</p> <p>If you are having trouble accessing the Internet through the router, double check any settings you have entered on this page and verify them with your ISP if needed.</p> <p>More...</p>
Internet Setup					
Wireless Settings					
Local Network					
Time and Date					
Logout					

DSL-2740B	SETUP	ADVANCED	MAINTENANCE	STATUS	HELP
Wizard	WAN				Helpful Hints... When configuring the router to access the Internet, be sure to choose the correct Connection Type from the list below. If you are unsure of which option to choose, contact your Internet Service Provider (ISP) . If you are having trouble accessing the Internet through the router, double check any settings you have entered on this page and verify them with your ISP if needed. More...
Internet Setup	PPP usually requires that you have a user name and password to establish your connection. In the boxes below, enter the user name and password that your ISP has provided to you.				
Wireless Settings	PPP USERNAME AND PASSWORD				
Local Network	PPP Username: <input type="text" value="dlinkaus1@internode.on"/> PPP Password: <input type="password" value="....."/> Confirm PPP Password: <input type="password" value="....."/> Authentication Method: <input type="button" value="AUTO"/> <input type="button" value="v"/> MTU: <input type="text" value="1492"/>				
Time and Date	<input type="checkbox"/> Dial on demand (with idle timeout timer) Inactivity Timeout (minutes) [1-4320]: <input type="text" value="0"/>				
Logout	<input checked="" type="checkbox"/> Keep Alive <input type="checkbox"/> Enable PPP debug <input type="checkbox"/> PPP IP extension <input type="checkbox"/> Use Static IP Address IP Address: <input type="text" value="255.255.255.255"/>				
	<input checked="" type="radio"/> Obtain default gateway automatically. <input type="radio"/> Use the following default gateway: <input type="radio"/> Use IP Address: <input type="text"/> <input type="radio"/> Use WAN Interface: <input type="button" value="pppoe_0_35_1/ppp_0_35_1"/> <input type="button" value="v"/>				
	<input type="button" value="Back"/> <input type="button" value="Next"/> <input type="button" value="Cancel"/>				

DSL-2740B	SETUP	ADVANCED	MAINTENANCE	STATUS	HELP
Wizard	WAN				Helpful Hints... IGMP (Internet Group Management Protocol, join/leave) is a communications protocol used to manage the membership of Internet Protocol multicast groups. "IGMP proxy(multicast)" feature needs to be enabled for the device(L2 switch) to support multimedia applications (transmitter/media server & receivers/IPSTBs) w/ multicast capability, i.e. IPTV, on-line gaming etc. More...
Internet Setup	Network Address Translation (NAT) allows you to share one Wide Area Network (WAN) IP address for multiple computers on your Local Area Network (LAN).				
Wireless Settings	NETWORK ADDRESS TRANSLATION SETTINGS				
Local Network	Enable NAT <input checked="" type="checkbox"/> Enable Firewall <input checked="" type="checkbox"/>				
Time and Date	Enable IGMP Proxy, and WAN Service Enable IGMP Proxy <input type="checkbox"/> Enable Telefonica IPTV Support <input type="checkbox"/>				
Logout	Enable WAN Service <input checked="" type="checkbox"/> Service Name: <input type="text" value="pppoe_8_35_1"/>				
	<input type="button" value="Back"/> <input type="button" value="Next"/> <input type="button" value="Cancel"/>				



DSL-2740B // SETUP ADVANCED MAINTENANCE STATUS HELP

- Wizard
- Internet Setup
- Wireless Settings
- Local Network
- Time and Date
- Logout

WAN

Make sure that the settings below match the settings provided by your ISP.

Click "Apply" to save these settings. Click "Back" to make any modifications.
 NOTE: You need to reboot to activate this WAN interface and further configure services over this interface.

Helpful Hints...

Note:Be sure to restart the router for the new Internet Setting to take effect.

[More...](#)

SETUP - SUMMARY

VPI / VCI:	8 / 35
Connection Type:	PPPoE
Service Name:	pppoe_8_35_1
Service Category:	UBR
IP Address:	Automatically Assigned
Service State:	Enabled
NAT:	Enabled
Firewall:	Enabled
IGMP Proxy:	Disabled
Telefonica IPTV:	Disabled
Quality Of Service:	Disabled

BROADBAND

Windows Internet Explorer [X]

? These settings will only take effect after rebooting the router. Press "OK" to reboot now or "Cancel" to reboot later

DSL ROUTER REBOOT

The DSL Router has been configured and is rebooting. Please wait...
 If necessary, reconfigure your PC's IP address to match your new configuration after reboot finishes.

45%



DSL-2740B //	SETUP	ADVANCED	MAINTENANCE	STATUS	HELP
Wizard	WIRELESS SETTINGS -- WIRELESS BASICS				
Internet Setup	Configure your wireless basic settings.				
Wireless Settings	Wireless Basics				
Local Network	WIRELESS SETTINGS -- WIRELESS SECURITY				
Time and Date	Configure your wireless security settings.				
Logout	Wireless security				
BROADBAND					



DSL-2740B //	SETUP	ADVANCED	MAINTENANCE	STATUS	HELP
Wizard	WIRELESS				Helpful Hints... Changing your Wireless Network Name is the first step in securing your wireless network. Change it to a familiar name that does not contain any personal information. Choosing the Invisible option from Visibility Status is another way to secure your network. With Invisible selected, no wireless clients will be able to see your wireless network when they scan to see what's available. For your wireless devices to connect to your router, you will need to manually enter the Wireless Network Name on each device. If you have enabled Wireless Security, make sure you write down the Passphrase that you have configured. You will need to enter this information on any wireless device that you connect to your wireless network.. More...
Internet Setup	Use this section to configure the wireless settings for your D-Link router. Please note that changes made on this section will also need to be duplicated to your wireless clients and PC.				
Wireless Settings	WIRELESS NETWORK SETTINGS				
Local Network	Enable Wireless : <input checked="" type="checkbox"/>				
Time and Date	Select SSID : <input type="text" value="DSL2740B"/>				
Logout	Wireless Network Name (SSID) : <input type="text" value="DSL2740B"/>				
	Visibility Status: <input checked="" type="radio"/> Visible <input type="radio"/> Invisible				
	Country : <input type="text" value="AUSTRALIA"/>				
	Enable Auto Channel Scan : <input type="checkbox"/>				
	Wireless Channel : <input type="text" value="2.462 GHz - CH 11"/>				
	802.11 Mode : <input type="text" value="Mixed 802.11n, 802.11g and 802.11b"/>				
	Channel Width : <input type="text" value="Auto 20/40 MHz"/>				
	Transmission Rate : <input type="text" value="Best (automatic)"/> (Mbit/s)				
	PRE-SHARED KEY				
	Pre-Shared Key : <input type="text" value="password"/>				
	<p>Please take note of your SSID and security Key as you will need to duplicate the same settings to your wireless devices and PC.</p>				
	<input type="button" value="Apply Settings"/> <input type="button" value="Cancel"/>				



DSL-2740B	SETUP	ADVANCED	MAINTENANCE	STATUS	HELP
Wizard	WIRELESS				Helpful Hints... Changing your Wireless Network Name is the first step in securing your wireless network. Change it to a familiar name that does not contain any personal information. Choosing the Invisible option from Visibility Status is another way to secure your network. With Invisible selected, no wireless clients will be able to see your wireless network when they scan to see what's available. For your wireless devices to connect to your router, you will need to manually enter the Wireless Network Name on each device. If you have enabled Wireless Security, make sure you write down the Passphrase that you have configured. You will need to enter this information on any wireless device that you connect to your wireless network.. More...
Internet Setup	Use this section to configure the wireless settings for your D-Link router. Please note that changes made on this section will also need to be duplicated to your wireless clients and PC.				
Wireless Settings	WIRELESS NETWORK SETTINGS				
Local Network	Enable Wireless : <input checked="" type="checkbox"/> Select SSID : DSL2740B Wireless Network Name (SSID) : DSL2740B Visibility Status: <input checked="" type="radio"/> Visible <input type="radio"/> Invisible Country : AUSTRALIA Enable Auto Channel Scan : <input type="checkbox"/> Wireless Channel : 2.462 GHz - CH 11 802.11 Mode : Mixed 802.11n, 802.11g and 802.11b Channel Width : 802.11g only Transmission Rate : 802.11b only 802.11n only Mixed 802.11n, 802.11g and 802.11b				
Time and Date	PRE-SHARED KEY				
Logout	Pre-Shared Key : password				
	Please take note of your SSID and security Key as you will need to duplicate the same settings to your wireless devices and PC.				
	<input type="button" value="Apply Settings"/> <input type="button" value="Cancel"/>				



DSL-2740B	SETUP	ADVANCED	MAINTENANCE	STATUS	HELP
Wizard	WIRELESS				Helpful Hints... Changing your Wireless Network Name is the first step in securing your wireless network. Change it to a familiar name that does not contain any personal information. Choosing the Invisible option from Visibility Status is another way to secure your network. With Invisible selected, no wireless clients will be able to see your wireless network when they scan to see what's available. For your wireless devices to connect to your router, you will need to manually enter the Wireless Network Name on each device. If you have enabled Wireless Security, make sure you write down the Passphrase that you have configured. You will need to enter this information on any wireless device that you connect to your wireless network.. More...
Internet Setup	Use this section to configure the wireless settings for your D-Link router. Please note that changes made on this section will also need to be duplicated to your wireless clients and PC.				
Wireless Settings	WIRELESS NETWORK SETTINGS				
Local Network	Enable Wireless : <input checked="" type="checkbox"/> Select SSID : DSL2740B Wireless Network Name (SSID) : DSL2740B Visibility Status: <input checked="" type="radio"/> Visible <input type="radio"/> Invisible Country : AUSTRALIA Enable Auto Channel Scan : <input type="checkbox"/> Wireless Channel : 2.462 GHz - CH 11 802.11 Mode : Mixed 802.11n, 802.11g and 802.11b Channel Width : Auto 20/40 MHz Transmission Rate : Best (automatic) (Mbit/s)				
Time and Date	PRE-SHARED KEY				
Logout	Pre-Shared Key :				
	Please take note of your SSID and security Key as you will need to duplicate the same settings to your wireless devices and PC.				
	<input type="button" value="Apply Settings"/> <input type="button" value="Cancel"/>				

DSL-2740B	SETUP	ADVANCED	MAINTENANCE	STATUS	HELP
Wizard	WIRELESS				Helpful Hints... Changing your Wireless Network Name is the first step in securing your wireless network. Change it to a familiar name that does not contain any personal information. Choosing the Invisible option from Visibility Status is another way to secure your network. With Invisible selected, no wireless clients will be able to see your wireless network when they scan to see what's available. For your wireless devices to connect to your router, you will need to manually enter the Wireless Network Name on each device. If you have enabled Wireless Security, make sure you write down the Passphrase that you have configured. You will need to enter this information on any wireless device that you connect to your wireless network.. More...
Internet Setup	Use this section to configure the wireless settings for your D-Link router. Please note that changes made on this section will also need to be duplicated to your wireless clients and PC.				
Wireless Settings	WIRELESS SECURITY SETTINGS				
Local Network	To protect your privacy you can configure wireless security features. This device supports three wireless security modes including: WEP, WPA, WPA2 and Auto. The WEP mode is the original wireless encryption standard.WPA provides a higher level of security. For maximum compatibility,use WPA .This mode uses TKIP cipher.Some gaming and legacy devices work only in this mode.For best security,use WPA2 mode.This mode uses AES(CCMP) cipher and legacy stations are not allowed access with WPA security.Use Auto(WPA or WPA2) mode to achieve a balance of strong security and best compatibility.This mode uses WPA for legacy clients while maintaining higher security with stations that are WPA2 capable.Also the strongest cipher that the client supports will be used To achieve better wireless performance use WPA2 security mode (or in other words AES cipher).				
Time and Date	Select SSID : DSL2740B Security Mode : WPA (TKIP) <ul style="list-style-type: none"> None WEP WPA WPA2 Auto (WPA or WPA2) 				
Logout	WPA WPA-Personal does not require an external RADIUS server WPA-Enterprise option requires an external RADIUS server WPA Mode : WPA-PSK (Personal) Group Key Update Interval : 0 (seconds)				
	PRE-SHARED KEY Pre-Shared Key : password				
	Please take note of your SSID and security Key as you will need to duplicate the same settings to your wireless devices and PC.				
	<input type="button" value="Apply Settings"/> <input type="button" value="Cancel"/>				

Time and Date	To protect your privacy you can configure wireless security features. This device supports three wireless security modes including: WEP, WPA, WPA2 and Auto. The WEP mode is the original wireless encryption standard.WPA provides a higher level of security. For maximum compatibility,use WPA .This mode uses TKIP cipher.Some gaming and legacy devices work only in this mode.For best security,use WPA2 mode.This mode uses AES(CCMP) cipher and legacy stations are not allowed access with WPA security.Use Auto(WPA or WPA2) mode to achieve a balance of strong security and best compatibility.This mode uses WPA for legacy clients while maintaining higher security with stations that are WPA2 capable.Also the strongest cipher that the client supports will be used To achieve better wireless performance use WPA2 security mode (or in other words AES cipher).			
Logout	Select SSID : DSL2740B Security Mode : WEP			
	WEP If you choose the WEP security option this device will ONLY operate in Legacy Wireless mode (802.11B/G) . This means you will NOT get 11N performance due to the fact that WEP is not supported by the Draft 11N specification. WEP is the wireless encryption standard. To use it you must enter the same key(s) into the router and the wireless stations. For 64 bit keys you must enter 10 hex digits into each key box. For 128 bit keys you must enter 26 hex digits into each key box. A hex digit is either a number from 0 to 9 or a letter from A to F. For the most secure use of WEP set the authentication type to "Shared Key" when WEP is enabled. You may also enter any text string into a WEP key box, in which case it will be converted into a hexadecimal key using the ASCII values of the characters. A maximum of 5 text characters can be entered for 64 bit keys, and a maximum of 13 characters for 128 bit keys.			
	WEP Key Length : 64 bit (10 hex digits) (The length applies to all keys) <ul style="list-style-type: none"> 128 bit (26 hex digits) 64 bit (10 hex digits) WEP Key 1 : <input type="text"/> WEP Key 2 : <input type="radio"/> <input type="text"/> WEP Key 3 : <input type="radio"/> <input type="text"/> WEP Key 4 : <input type="radio"/> <input type="text"/> Authentication : Open			
	Please take note of your SSID and security Key as you will need to duplicate the same settings to your wireless devices and PC.			
	<input type="button" value="Apply Settings"/> <input type="button" value="Cancel"/>			

personal information. Choosing the **Invisible** option from **Visibility Status** is another way to secure your network. With **Invisible** selected, no wireless clients will be able to see your wireless network when they scan to see what's available. For your wireless devices to connect to your router, you will need to manually enter the Wireless Network Name on each device. If you have enabled Wireless Security, make sure you write down the Passphrase that you have configured. You will need to enter this information on any wireless device that you connect to your wireless network..

[More...](#)

DSL-2740B	SETUP	ADVANCED	MAINTENANCE	STATUS	HELP
Wizard	WIRELESS				Helpful Hints... Changing your Wireless Network Name is the first step in securing your wireless network. Change it to a familiar name that does not contain any personal information. Choosing the Invisible option from Visibility Status is another way to secure your network. With Invisible selected, no wireless clients will be able to see your wireless network when they scan to see what's available. For your wireless devices to connect to your router, you will need to manually enter the Wireless Network Name on each device. If you have enabled Wireless Security, make sure you write down the Passphrase that you have configured. You will need to enter this information on any wireless device that you connect to your wireless network.. More...
Internet Setup	Use this section to configure the wireless settings for your D-Link router. Please note that changes made on this section will also need to be duplicated to your wireless clients and PC.				
Wireless Settings	WIRELESS SECURITY SETTINGS				
Local Network	<p>To protect your privacy you can configure wireless security features. This device supports three wireless security modes including: WEP, WPA, WPA2 and Auto.</p> <p>The WEP mode is the original wireless encryption standard.WPA provides a higher level of security.</p> <p>For maximum compatibility,use WPA.This mode uses TKIP cipher.Some gaming and legacy devices work only in this mode.For best security,use WPA2 mode.This mode uses AES(CCMP) cipher and legacy stations are not allowed access with WPA security.Use Auto(WPA or WPA2) mode to achieve a balance of strong security and best compatibility.This mode uses WPA for legacy clients while maintaining higher security with stations that are WPA2 capable.Also the strongest cipher that the client supports will be used</p> <p>To achieve better wireless performance use WPA2 security mode (or in other words AES cipher).</p> <p>Select SSID : <input type="text" value="DSL2740B"/></p> <p>Security Mode : <input type="text" value="WPA"/> (TKIP)</p>				
Time and Date	<p>WPA</p> <p>WPA-Personal does not require an authentication server.The WPA-Enterprise option requires an external RADIUS server</p> <p>WPA Mode : <input type="text" value="(Click to Select)"/></p> <p>Group Key Update Interval : <input type="text" value="0"/> (seconds)</p>				
Logout	<p>Please take note of your SSID and security Key as you will need to duplicate the same settings to your wireless devices and PC.</p> <p><input type="button" value="Apply Settings"/> <input type="button" value="Cancel"/></p>				

DSL-2740B	SETUP	ADVANCED	MAINTENANCE	STATUS	HELP
Wizard	WIRELESS				Helpful Hints... Changing your Wireless Network Name is the first step in securing your wireless network. Change it to a familiar name that does not contain any personal information. Choosing the Invisible option from Visibility Status is another way to secure your network. With Invisible selected, no wireless clients will be able to see your wireless network when they scan to see what's available. For your wireless devices to connect to your router, you will need to manually enter the Wireless Network Name on each device. If you have enabled Wireless Security, make sure you write down the Passphrase that you have configured. You will need to enter this information on any wireless device that you connect to your wireless network.. More...
Internet Setup	Use this section to configure the wireless settings for your D-Link router. Please note that changes made on this section will also need to be duplicated to your wireless clients and PC.				
Wireless Settings	WIRELESS SECURITY SETTINGS				
Local Network	<p>To protect your privacy you can configure wireless security features. This device supports three wireless security modes including: WEP, WPA, WPA2 and Auto.</p> <p>The WEP mode is the original wireless encryption standard.WPA provides a higher level of security.</p> <p>For maximum compatibility,use WPA.This mode uses TKIP cipher.Some gaming and legacy devices work only in this mode.For best security,use WPA2 mode.This mode uses AES(CCMP) cipher and legacy stations are not allowed access with WPA security.Use Auto(WPA or WPA2) mode to achieve a balance of strong security and best compatibility.This mode uses WPA for legacy clients while maintaining higher security with stations that are WPA2 capable.Also the strongest cipher that the client supports will be used</p> <p>To achieve better wireless performance use WPA2 security mode (or in other words AES cipher).</p> <p>Select SSID : <input type="text" value="DSL2740B"/></p> <p>Security Mode : <input type="text" value="WPA2"/> (AES)</p>				
Time and Date	<p>WPA2</p> <p>WPA-Personal does not require an authentication server.The WPA-Enterprise option requires an external RADIUS server</p> <p>WPA Mode : <input type="text" value="(Click to Select)"/></p> <p>Group Key Update Interval : <input type="text" value="(Click to Select)"/> (WPA2-PSK (Personal) / WPA2 (Enterprise))</p>				
Logout	<p>Please take note of your SSID and security Key as you will need to duplicate the same settings to your wireless devices and PC.</p> <p><input type="button" value="Apply Settings"/> <input type="button" value="Cancel"/></p>				

DSL-2740B	SETUP	ADVANCED	MAINTENANCE	STATUS	HELP
Wizard	WIRELESS				Helpful Hints... Changing your Wireless Network Name is the first step in securing your wireless network. Change it to a familiar name that does not contain any personal information. Choosing the Invisible option from Visibility Status is another way to secure your network. With Invisible selected, no wireless clients will be able to see your wireless network when they scan to see what's available. For your wireless devices to connect to your router, you will need to manually enter the Wireless Network Name on each device. If you have enabled Wireless Security, make sure you write down the Passphrase that you have configured. You will need to enter this information on any wireless device that you connect to your wireless network.. More...
Internet Setup	Use this section to configure the wireless settings for your D-Link router. Please note that changes made on this section will also need to be duplicated to your wireless clients and PC.				
Wireless Settings	WIRELESS SECURITY SETTINGS				
Local Network	To protect your privacy you can configure wireless security features. This device supports three wireless security modes including: WEP, WPA, WPA2 and Auto.				
Time and Date	The WEP mode is the original wireless encryption standard.WPA provides a higher level of security. For maximum compatibility,use WPA .This mode uses TKIP cipher.Some gaming and legacy devices work only in this mode.For best security,use WPA2 mode.This mode uses AES(CCMP) cipher and legacy stations are not allowed access with WPA security.Use Auto(WPA or WPA2) mode to achieve a balance of strong security and best compatibility.This mode uses WPA for legacy clients while maintaining higher security with stations that are WPA2 capable.Also the strongest cipher that the client supports will be used To achieve better wireless performance use WPA2 security mode (or in other words AES cipher).				
Logout	Select SSID : <input type="text" value="DSL2740B"/> Security Mode : <input type="text" value="WPA2"/> (AES)				
	WPA2				
	WPA-Personal does not require an authentication server.The WPA-Enterprise option requires an external RADIUS server				
	WPA Mode : <input type="text" value="WPA2-PSK (Personal)"/> Group Key Update Interval : <input type="text" value="0"/> (seconds)				
	PRE-SHARED KEY				
	Pre-Shared Key : <input type="text" value="password"/>				
	Please take note of your SSID and security Key as you will need to duplicate the same settings to your wireless devices and PC.				
	<input type="button" value="Apply Settings"/> <input type="button" value="Cancel"/>				

Wireless Settings	Use this section to configure the wireless settings for your D-Link router. Please note that changes made on this section will also need to be duplicated to your wireless clients and PC.				Network Name is the first step in securing your wireless network. Change it to a familiar name that does not contain any personal information. Choosing the Invisible option from Visibility Status is another way to secure your network. With Invisible selected, no wireless clients will be able to see your wireless network when they scan to see what's available. For your wireless devices to connect to your router, you will need to manually enter the Wireless Network Name on each device. If you have enabled Wireless Security, make sure you write down the Passphrase that you have configured. You will need to enter this information on any wireless device that you connect to your wireless network.. More...
Local Network	WIRELESS SECURITY SETTINGS				
Time and Date	To protect your privacy you can configure wireless security features. This device supports three wireless security modes including: WEP, WPA, WPA2 and Auto.				
Logout	The WEP mode is the original wireless encryption standard.WPA provides a higher level of security. For maximum compatibility,use WPA .This mode uses TKIP cipher.Some gaming and legacy devices work only in this mode.For best security,use WPA2 mode.This mode uses AES(CCMP) cipher and legacy stations are not allowed access with WPA security.Use Auto(WPA or WPA2) mode to achieve a balance of strong security and best compatibility.This mode uses WPA for legacy clients while maintaining higher security with stations that are WPA2 capable.Also the strongest cipher that the client supports will be used To achieve better wireless performance use WPA2 security mode (or in other words AES cipher).				
	Select SSID : <input type="text" value="DSL2740B"/> Security Mode : <input type="text" value="WPA2"/> (AES)				
	WPA2				
	WPA-Personal does not require an authentication server.The WPA-Enterprise option requires an external RADIUS server				
	WPA Mode : <input type="text" value="WPA2 (Enterprise)"/> Group Key Update Interval : <input type="text" value="0"/> (seconds)				
	EAP (802.1X)				
	When WPA enterprise is enabled, the router uses EAP (802.1x) to authenticate clients via a remote RADIUS server.				
	Authentication Timeout : <input type="text" value="600"/> (minutes) RADIUS server IP Address : <input type="text" value="0.0.0.0"/> RADIUS Port : <input type="text" value="1812"/> RADIUS key : <input type="text"/>				
	Please take note of your SSID and security Key as you will need to duplicate the same settings to your wireless devices and PC.				
	<input type="button" value="Apply Settings"/> <input type="button" value="Cancel"/>				



DSL-2740B	SETUP	ADVANCED	MAINTENANCE	STATUS	HELP
------------------	--------------	-----------------	--------------------	---------------	-------------

- Wizard
- Internet Setup
- Wireless Settings
- Local Network
- Time and Date
- Logout

LAN SETUP

This section allows you to configure the local network settings of your router. Please note that this section is optional and you should not need to change any of the settings here to get your network up and running.

ROUTER SETTINGS

Use this section to configure the local network settings of your router. The IP Address that is configured here is the IP Address that you use to access the Web-based management interface. If you change the IP Address here, you may need to adjust your PC's network settings to access the network again.

Router IP Address :

Subnet Mask :

Enable UPNP:

Configure the second IP Address and Subnet Mask for LAN interface

IP Address:

Subnet Mask:

DHCP SERVER SETTINGS (OPTIONAL)

Use this section to configure the built-in DHCP Server to assign IP addresses to the computers on your network.

Enable DHCP Server :

DHCP IP Address Range : to

DHCP Lease Time : (hours)

Save Settings

DHCP RESERVATIONS LIST

Save Settings

DHCP RESERVATIONS LIST

Enable	Computer Name	MAC Address	IP Address
--------	---------------	-------------	------------

Add Edit Delete

NUMBER OF DYNAMIC DHCP CLIENTS : 2

Computer Name	MAC Address	IP Address	Expire Time
gti-ea1f099f408	00:1F:3B:30:F5:73	192.168.1.2	23 hours, 53 minutes, 4 seconds
d-ffea82cb57174	00:1C:F0:A8:F6:08	192.168.1.3	23 hours, 54 minutes, 54 seconds

Helpful Hints...

The IP address of your router is the same IP address you will use to access the web management interface of your router. If you already have a DHCP server on your network or are using static IP add on all the devices on your network, click on **Disable DHCP Server** to disable this feature.

UPnP helps other UPnP LAN hosts interoperate with the router. Leave the UPnP option enabled as long as the LAN has other UPnP applications.

[More...](#)

DHCP RESERVATIONS LIST

Enable	Computer Name	MAC Address	IP Address
--------	---------------	-------------	------------

ADD/EDIT DHCP RESERVATION (OPTIONAL)

Enable :

Computer Name :

IP Address :

MAC Address :

NUMBER OF DYNAMIC DHCP CLIENTS : 2

Computer Name	MAC Address	IP Address	Expire Time
gti-ea1f099f408	00:1F:3B:30:F5:73	192.168.1.2	23 hours, 53 minutes, 4 seconds
d- ffea82cb57174	00:1C:F0:A8:F6:08	192.168.1.3	23 hours, 54 minutes, 54 seconds

BROADBAND

DSL-2740B

SETUP

ADVANCED

MAINTENANCE

STATUS

HELP

Wizard

Internet Setup

Wireless Settings

Local Network

Time and Date

Logout

TIME

The Time Configuration option allows you to configure, update, and maintain the correct time on the internal system clock. From this section you can set the time zone that you are in and set the NTP (Network Time Protocol) Server. Daylight Saving can also be configured to automatically adjust the time when needed.

TIME SETTINGS

Automatically synchronize with Internet time servers

First NTP time server:

Second NTP time server:

TIME CONFIGURATION

Current Router Time : 1.01.2000,00:09:48 Sat

Time Zone :

Enable Daylight Saving :

Daylight Saving Offset :

Daylight Saving Dates :

	Month	Week	Day	Time
Start	<input type="text" value="Jan"/>	<input type="text" value="1st"/>	<input type="text" value="Sun"/>	<input type="text" value="12 am"/>
End	<input type="text" value="Oct"/>	<input type="text" value="1st"/>	<input type="text" value="Sun"/>	<input type="text" value="12 am"/>

SET THE DATE AND TIME MANUALLY

Date And Time :

Year: Month: Day:

Hour: Minute: Second:

Helpful Hints...

Good timekeeping is important for accurate logs and scheduled firewall rules.

Click on the **[Copy your Computer's ...]** button will copy your PC's current time.

[More...](#)



DSL-2740B //	SETUP	ADVANCED	MAINTENANCE	STATUS	HELP
---------------------	--------------	-----------------	--------------------	---------------	-------------

Wizard
Internet Setup
Wireless Settings
Local Network
Time and Date
Logout

LOGOUT

Logout

BROADBAND



DSL-2740B //	SETUP	ADVANCED	MAINTENANCE	STATUS	HELP
---------------------	--------------	-----------------	--------------------	---------------	-------------

Advanced Wireless
Port Forwarding
Port Triggering
DMZ
Parental Control
Filtering Options
Firewall Settings
DNS
Dynamic DNS
Network Tools
Routing
Schedules
Logout

WIRELESS -- ADVANCED SETTINGS

Allows you to configure advanced features of the wireless LAN interface.

Advanced Setting

WIRELESS -- MAC FILTER

Allows you to configure wireless firewall by denying or allowing designated MAC addresses.

MAC Filter

WIRELESS -- BRIDGE

Allows you to configure wireless bridge (also known as Wireless Distribution System) features of the wireless LAN interface.

Bridge

WIRELESS -- QOS (QUALITY OF SERVICE)

Allows you to configure wireless QoS.

Quality of Service

BROADBAND

- Advanced Wireless
- Port Forwarding
- Port Triggering
- DMZ
- Parental Control
- Filtering Options
- Firewall Settings
- DNS
- Dynamic DNS
- Network Tools
- Routing
- Schedules
- Logout

WIRELESS -- ADVANCED SETTINGS

This page allows you to configure advanced features of the wireless LAN interface. You can select a particular channel on which to operate, force the transmission rate to a particular speed, set the fragmentation threshold, set the RTS threshold, set the wakeup interval for clients in power-save mode, set the beacon interval for the access point, set XPress mode and set whether short or long preambles are used.

Click "Apply" to configure the advanced wireless options.

ADVANCED SETTINGS

AP Isolation: Off

Band: 2.4GHz

Channel: 11

Auto Channel Timer(min): 0

802.11n/EWC: Auto

Bandwidth: 40MHz in Both Bands

Control Sideband: Upper

802.11n Rate: Auto

802.11n Protection: Auto

Support 802.11n Client Only: Off

54g™ Rate: 1 Mbps

Multicast Rate: Auto

Basic Rate: Default

Fragmentation Threshold: 2346

RTS Threshold: 2347

DTIM Interval: 1

Beacon Interval: 100

XPress™ Technology: Disabled

Afterburner Technology: Disabled Disable WMM(Quality of Service) and set Fragmentation to 2346 for selection

Preamble Type: long

Transmit Power: 100%

Wireless - Guest/Virtual Access Points:

Enabled	SSID	Hidden	Isolate Clients	Disable WMM Advertise	Max Clients	BSSID
<input type="checkbox"/>	Guest	<input type="checkbox"/>	<input type="checkbox"/>	<input type="checkbox"/>	128	N/A
<input type="checkbox"/>	Guest1	<input type="checkbox"/>	<input type="checkbox"/>	<input type="checkbox"/>	128	N/A
<input type="checkbox"/>	Guest2	<input type="checkbox"/>	<input type="checkbox"/>	<input type="checkbox"/>	128	N/A

Helpful Hints...

It is recommended that you leave these parameters at their default values. Adjusting them could limit the performance of your wireless network.

Selecting Auto in **Channel** allows the router to select the best possible channel for your wireless network to operate on.

[More...](#)

- Advanced Wireless
- Port Forwarding
- Port Triggering
- DMZ
- Parental Control
- Filtering Options
- Firewall Settings
- DNS
- Dynamic DNS
- Network Tools
- Routing
- Schedules
- Logout

WIRELESS -- ADVANCED SETTINGS

This page allows you to configure advanced features of the wireless LAN interface. You can select a particular channel on which to operate, force the transmission rate to a particular speed, set the fragmentation threshold, set the RTS threshold, set the wakeup interval for clients in power-save mode, set the beacon interval for the access point, set XPress mode and set whether short or long preambles are used.

Click "Apply" to configure the advanced wireless options.

ADVANCED SETTINGS

AP Isolation: Off

Band: 2.4GHz

Channel: 11

Auto Channel Timer(min): 0

802.11n/EWC: Auto

Bandwidth: 40MHz in Both Bands

Control Sideband: Upper

802.11n Rate: Auto

802.11n Protection: Auto

Support 802.11n Client Only: Use 54g Rate

54g™ Rate: 0: 13.5 Mbps, 1: 27 Mbps, 2: 40.5 Mbps, 3: 54 Mbps, 4: 81 Mbps, 5: 108 Mbps, 6: 121.5 Mbps, 7: 135 Mbps, 8: 27 Mbps, 9: 54 Mbps, 10: 81 Mbps, 11: 108 Mbps, 12: 162 Mbps, 13: 216 Mbps, 14: 243 Mbps, 15: 270 Mbps, 32: 6 Mbps

Multicast Rate: Auto

Basic Rate: Default

Fragmentation Threshold: 2346

RTS Threshold: 2347

DTIM Interval: 1

Beacon Interval: 100

XPress™ Technology: Disabled

Afterburner Technology: Disabled Disable WMM(Quality of Service) and set Fragmentation to 2346 for selection

Preamble Type: long

Transmit Power: 100%

Wireless - Guest/Virtual Access Points:

Enabled	SSID	Hidden	Isolate Clients	Disable WMM Advertise	Max Clients	BSSID
<input type="checkbox"/>	Guest	<input type="checkbox"/>	<input type="checkbox"/>	<input type="checkbox"/>	128	N/A
<input type="checkbox"/>	Guest1	<input type="checkbox"/>	<input type="checkbox"/>	<input type="checkbox"/>	128	N/A

Helpful Hints...

It is recommended that you leave these parameters at their default values. Adjusting them could limit the performance of your wireless network.

Selecting Auto in **Channel** allows the router to select the best possible channel for your wireless network to operate on.

[More...](#)

- Port Triggering
- DMZ
- Parental Control
- Filtering Options
- Firewall Settings
- DNS
- Dynamic DNS
- Network Tools
- Routing
- Schedules
- Logout

select a particular channel on which to operate, force the transmission rate to a particular speed, set the fragmentation threshold, set the RTS threshold, set the wakeup interval for clients in power-save mode, set the beacon interval for the access point, set XPress mode and set whether short or long preambles are used.

Click "Apply" to configure the advanced wireless options.

ADVANCED SETTINGS

AP Isolation:

Band:

Channel:

Auto Channel Timer(min):

802.11n/EWC:

Bandwidth:

Control Sideband:

802.11n Rate:

802.11n Protection:

Support 802.11n Client Only:

54g™ Rate:

Multicast Rate:

Basic Rate:

Fragmentation Threshold:

RTS Threshold:

DTIM Interval:

Beacon Interval:

XPress™ Technology:

Afterburner Technology: Disable WMM(Quality of Service) and set Fragmentation to 2346 for selection

Preamble Type:

Transmit Power:

Wireless - Guest/Virtual Access Points:

Enabled	SSID	Hidden	Isolate Clients	Disable WMM Advertise	Max Clients	BSSID
<input type="checkbox"/>	Guest	<input type="checkbox"/>	<input type="checkbox"/>	<input type="checkbox"/>	128	N/A
<input type="checkbox"/>	Guest1	<input type="checkbox"/>	<input type="checkbox"/>	<input type="checkbox"/>	128	N/A
<input type="checkbox"/>	Guest2	<input type="checkbox"/>	<input type="checkbox"/>	<input type="checkbox"/>	128	N/A

parameters at their default values. Adjusting them could limit the performance of your wireless network.

Selecting Auto in **Channel** allows the router to select the best possible channel for your wireless network to operate on.

[More...](#)



DSL-2740B	SETUP	ADVANCED	MAINTENANCE	STATUS	HELP		
<ul style="list-style-type: none"> Advanced Wireless Port Forwarding Port Triggering DMZ Parental Control Filtering Options Firewall Settings DNS Dynamic DNS Network Tools Routing Schedules Logout 	<div style="border: 1px solid orange; padding: 5px; margin-bottom: 10px;"> <p>WIRELESS -- MAC FILTER</p> <p>Sets wireless mac filter.</p> <p>Enter the MAC address and click "Apply" to add the MAC address to the wireless MAC address filters.</p> </div> <div style="border: 1px solid gray; padding: 10px;"> <p>WIRELESS -- MAC FILTER</p> <p>Select SSID : <input type="button" value="DSL2740B"/></p> <p>MAC Restrict Mode: <input type="radio"/> Disabled <input checked="" type="radio"/> Allow <input type="radio"/> Deny</p> <table style="width: 100%; border: 1px solid gray;"> <tr> <td style="width: 50%; border: 1px solid gray; padding: 2px;">MAC Address</td> <td style="width: 50%; border: 1px solid gray; padding: 2px;">Remove</td> </tr> </table> <p style="text-align: center; margin-top: 10px;"> <input type="button" value="Add"/> <input type="button" value="Delete"/> </p> </div>				MAC Address	Remove	<p>Helpful Hints...</p> <p>Create a list of MAC addresses that you would either like to allow or deny users access to the wireless router.</p> <p>More...</p>
MAC Address	Remove						



DSL-2740B	SETUP	ADVANCED	MAINTENANCE	STATUS	HELP			
Advanced Wireless	<h3>WIRELESS -- MAC FILTER</h3> <p>Sets wireless mac filter.</p> <p>Enter the MAC address and click "Apply" to add the MAC address to the wireless MAC address filters.</p>				Helpful Hints... Create a list of MAC addresses that you would either like to allow or deny users access to the wireless router. More...			
Port Forwarding	<h3>WIRELESS -- MAC FILTER</h3> <p>Select SSID : <input type="text" value="DSL2740B"/></p> <p>MAC Restrict Mode: <input type="radio"/> Disabled <input checked="" type="radio"/> Allow <input type="radio"/> Deny</p> <table border="1"> <thead> <tr> <th>MAC Address</th> <th>Remove</th> </tr> </thead> <tbody> <tr> <td> </td> <td> </td> </tr> </tbody> </table> <p><input type="button" value="Add"/> <input type="button" value="Delete"/></p>					MAC Address	Remove	
MAC Address	Remove							
Port Triggering	<h3>MAC FILTER</h3> <p>MAC Address: <input type="text"/></p> <p><input type="button" value="Apply"/> <input type="button" value="Cancel"/></p>							
DMZ	BROADBAND							



DSL-2740B	SETUP	ADVANCED	MAINTENANCE	STATUS	HELP
Advanced Wireless	<h3>WIRELESS -- BRIDGE</h3> <p>This page allows you to configure wireless bridge features of the wireless LAN interface. You can select Wireless Bridge (also known as Wireless Distribution System) to disables access point functionality.</p> <p>Click "Refresh" to update the remote bridges. Wait for few seconds to update.</p> <p>Click "Save/Apply" to configure the wireless bridge options.</p>				Helpful Hints... Selecting Access Point enables access point functionality. Wireless bridge functionality will still be available and wireless stations will be able to associate to the AP. Select Disabled in Bridge Restrict which disables wireless bridge restriction. Any wireless bridge will be granted access. Selecting Enabled or Enabled(Scan) enables wireless bridge restriction. Only those bridges selected in Remote Bridges will be granted access. More...
Port Forwarding	<h3>WIRELESS -- BRIDGE</h3> <p>AP Mode: <input type="text" value="Access Point"/></p> <p>Bridge Restrict: <input type="text" value="Disabled"/></p> <p>You must Disable 802.11n for Bridge selection</p> <p><input type="button" value="Refresh"/> <input type="button" value="Apply"/></p>				
Port Triggering	BROADBAND				



DSL-2740B //	SETUP	ADVANCED	MAINTENANCE	STATUS	HELP																			
Advanced Wireless	<h3>WIRELESS -- QoS</h3> <p>This page lets you add, remove, enable and disable wireless QoS.</p>				Helpful Hints... You can give multimedia applications a higher quality of service and priority in a wireless network so applications such as videos will be of higher quality. Enabling WMM may delay the network traffic of other lower assigned quality applications. More...																			
Port Forwarding	<h3>WMM(WI-FI MULTIMEDIA) SETTINGS</h3> <p>Select SSID : <input type="text" value="DSL2740B"/></p> <p>WMM(Wi-Fi Multimedia): <input type="text" value="Disabled"/></p> <p>WMM No Acknowledgement: <input type="text" value="Disabled"/></p>																							
Port Triggering	<h3>WIRELESS QoS CLASSES</h3> <table border="1"> <thead> <tr> <th rowspan="2">Class Name</th> <th rowspan="2">Priority</th> <th colspan="5">TRAFFIC CLASSIFICATION RULES</th> </tr> <tr> <th>Protocol</th> <th>Source Addr./Mask</th> <th>Source Port</th> <th>Dest. Addr./Mask</th> <th>Dest. Port</th> </tr> </thead> <tbody> <tr> <td colspan="7"> <div style="text-align: center;"> <input type="button" value="Add QoS Entry"/> <input type="button" value="Edit"/> <input type="button" value="Remove"/> <input type="button" value="Apply WME Settings"/> </div> </td> </tr> </tbody> </table>					Class Name	Priority	TRAFFIC CLASSIFICATION RULES					Protocol	Source Addr./Mask	Source Port	Dest. Addr./Mask	Dest. Port	<div style="text-align: center;"> <input type="button" value="Add QoS Entry"/> <input type="button" value="Edit"/> <input type="button" value="Remove"/> <input type="button" value="Apply WME Settings"/> </div>						
Class Name	Priority	TRAFFIC CLASSIFICATION RULES																						
		Protocol	Source Addr./Mask	Source Port	Dest. Addr./Mask	Dest. Port																		
<div style="text-align: center;"> <input type="button" value="Add QoS Entry"/> <input type="button" value="Edit"/> <input type="button" value="Remove"/> <input type="button" value="Apply WME Settings"/> </div>																								
DMZ																								
Parental Control																								
Filtering Options																								
Firewall Settings																								
DNS																								
Dynamic DNS																								
Network Tools																								
Routing																								
Schedules																								
Logout																								
BROADBAND																								



DSL-2740B //	SETUP	ADVANCED	MAINTENANCE	STATUS	HELP																																				
Advanced Wireless	<h3>PORT FORWARDING</h3> <p>Port Forwarding allows you to direct incoming traffic from the WAN side (identified by protocol and external port) to the internal server with a private IP address on the LAN side. The internal port is required only if the external port needs to be converted to a different port number used by the server on the LAN side. A maximum of 32 entries can be configured.</p> <p>Select the service name, and enter the server IP address and click "Apply" to forward IP packets for this service to the specified server. NOTE: The "Internal Port End" cannot be changed. It is the same as "External Port End" normally and will be the same as the "Internal Port Start" or "External Port End" if either one is modified</p>				Helpful Hints... Check the Application Name drop down menu for a list of predefined applications. More...																																				
Port Forwarding	<h3>PORT FORWARDING SETUP</h3> <table border="1"> <thead> <tr> <th></th> <th>Server Name</th> <th>External Port Start</th> <th>External Port End</th> <th>Protocol</th> <th>Internal Port Start</th> <th>Internal Port End</th> <th>Server IP Address</th> <th>Sch R</th> </tr> </thead> <tbody> <tr> <td><input type="checkbox"/></td> <td>test</td> <td>47682</td> <td>47683</td> <td>TCP/UDP</td> <td>47682</td> <td>47683</td> <td>192.168.1.2</td> <td>alv</td> </tr> <tr> <td><input type="checkbox"/></td> <td>Web Server (HTT</td> <td>8000</td> <td>8000</td> <td>TCP</td> <td>80</td> <td>80</td> <td>192.168.1.1</td> <td>alv</td> </tr> <tr> <td><input type="checkbox"/></td> <td>webserver</td> <td>80</td> <td>80</td> <td>TCP</td> <td>80</td> <td>80</td> <td>192.168.1.90</td> <td>alv</td> </tr> </tbody> </table>						Server Name	External Port Start	External Port End	Protocol	Internal Port Start	Internal Port End	Server IP Address	Sch R	<input type="checkbox"/>	test	47682	47683	TCP/UDP	47682	47683	192.168.1.2	alv	<input type="checkbox"/>	Web Server (HTT	8000	8000	TCP	80	80	192.168.1.1	alv	<input type="checkbox"/>	webserver	80	80	TCP	80	80	192.168.1.90	alv
	Server Name	External Port Start	External Port End	Protocol		Internal Port Start	Internal Port End	Server IP Address	Sch R																																
<input type="checkbox"/>	test	47682	47683	TCP/UDP		47682	47683	192.168.1.2	alv																																
<input type="checkbox"/>	Web Server (HTT	8000	8000	TCP	80	80	192.168.1.1	alv																																	
<input type="checkbox"/>	webserver	80	80	TCP	80	80	192.168.1.90	alv																																	
Port Triggering																																									
DMZ																																									
Parental Control																																									
Filtering Options																																									
Firewall Settings																																									
DNS																																									
Dynamic DNS																																									
Network Tools																																									
Routing																																									
Schedules																																									
Logout																																									
<div style="text-align: center;"> <input type="button" value="Add"/> <input type="button" value="Edit"/> <input type="button" value="Delete"/> </div>																																									
BROADBAND																																									

<input type="checkbox"/>	webservice	80	80	TCP	80	80	192.168.1.90	alv
--------------------------	------------	----	----	-----	----	----	--------------	-----

[Add](#) [Edit](#) [Delete](#)

PORT FORWARDING SETUP

Remaining number of entries that can be configured:29

Server Name :

Select a Service :

Custom Server :

Schedule : [View Available Schedules](#)

Server IP Address :

External Port Start	External Port End	Protocol	Internal Port Start	Internal Port End
<input type="text"/>	<input type="text"/>	TCP <input type="text"/>	<input type="text"/>	<input type="text"/>
<input type="text"/>	<input type="text"/>	TCP <input type="text"/>	<input type="text"/>	<input type="text"/>
<input type="text"/>	<input type="text"/>	TCP <input type="text"/>	<input type="text"/>	<input type="text"/>
<input type="text"/>	<input type="text"/>	TCP <input type="text"/>	<input type="text"/>	<input type="text"/>
<input type="text"/>	<input type="text"/>	TCP <input type="text"/>	<input type="text"/>	<input type="text"/>
<input type="text"/>	<input type="text"/>	TCP <input type="text"/>	<input type="text"/>	<input type="text"/>
<input type="text"/>	<input type="text"/>	TCP <input type="text"/>	<input type="text"/>	<input type="text"/>
<input type="text"/>	<input type="text"/>	TCP <input type="text"/>	<input type="text"/>	<input type="text"/>
<input type="text"/>	<input type="text"/>	TCP <input type="text"/>	<input type="text"/>	<input type="text"/>
<input type="text"/>	<input type="text"/>	TCP <input type="text"/>	<input type="text"/>	<input type="text"/>
<input type="text"/>	<input type="text"/>	TCP <input type="text"/>	<input type="text"/>	<input type="text"/>
<input type="text"/>	<input type="text"/>	TCP <input type="text"/>	<input type="text"/>	<input type="text"/>
<input type="text"/>	<input type="text"/>	TCP <input type="text"/>	<input type="text"/>	<input type="text"/>
<input type="text"/>	<input type="text"/>	TCP <input type="text"/>	<input type="text"/>	<input type="text"/>
<input type="text"/>	<input type="text"/>	TCP <input type="text"/>	<input type="text"/>	<input type="text"/>

[Apply](#) [Cancel](#)

DSL-2740B

SETUP

ADVANCED

MAINTENANCE

STATUS

HELP

- Advanced Wireless
- Port Forwarding
- Port Triggering
- DMZ
- Parental Control
- Filtering Options
- Firewall Settings
- DNS
- Dynamic DNS
- Network Tools
- Routing
- Schedules
- Logout

PORT TRIGGERING

Some applications require that specific ports in the Router's firewall be opened for access by the remote parties. Port Trigger dynamically opens up the 'Open Ports' in the firewall when an application on the LAN initiates a TCP/UDP connection to a remote party using the 'Triggering Ports'. The Router allows the remote party from the WAN side to establish new connections back to the application on the LAN side using the 'Open Ports'.

Some applications such as games, video conferencing, remote access applications and others require that specific ports in the Router's firewall be opened for access by the applications. You can configure the port settings from this screen by selecting an existing application or creating your own (Custom application) and click "Apply" to add it.

A maximum of 32 entries can be configured.

PORT TRIGGERING

Application Name	Trigger		Open		Schedule Rule
	Protocol	Port Range Start End	Protocol	Port Range Start End	
<input type="text"/>	<input type="text"/>	<input type="text"/>	<input type="text"/>	<input type="text"/>	<input type="text"/>

[Add](#) [Edit](#) [Delete](#)

PORT TRIGGERING

Remaining number of entries that can be configured :32

Application Name :

Select an application :

Custom application :

Schedule : [View Available Schedules](#)

Trigger Port Start	Trigger Port End	Trigger Protocol	Open Port Start	Open Port End	Open Protocol
<input type="text"/>	<input type="text"/>	TCP <input type="text"/>	<input type="text"/>	<input type="text"/>	TCP <input type="text"/>
<input type="text"/>	<input type="text"/>	TCP <input type="text"/>	<input type="text"/>	<input type="text"/>	TCP <input type="text"/>
<input type="text"/>	<input type="text"/>	TCP <input type="text"/>	<input type="text"/>	<input type="text"/>	TCP <input type="text"/>
<input type="text"/>	<input type="text"/>	TCP <input type="text"/>	<input type="text"/>	<input type="text"/>	TCP <input type="text"/>
<input type="text"/>	<input type="text"/>	TCP <input type="text"/>	<input type="text"/>	<input type="text"/>	TCP <input type="text"/>
<input type="text"/>	<input type="text"/>	TCP <input type="text"/>	<input type="text"/>	<input type="text"/>	TCP <input type="text"/>
<input type="text"/>	<input type="text"/>	TCP <input type="text"/>	<input type="text"/>	<input type="text"/>	TCP <input type="text"/>

Helpful Hints...

Use this feature if you are trying to execute one of the listed network applications and it is not communicating as expected.

Check the Application Name drop down menu for a list of predefined applications.

[More...](#)



DSL-2740B	SETUP	ADVANCED	MAINTENANCE	STATUS	HELP
Advanced Wireless	<div style="border: 1px solid orange; padding: 5px;"> <p>DEMILITARIZED ZONE</p> <p>The DSL Router will forward IP packets from the WAN that do not belong to any of the applications configured in the Port Forwarding table to the DMZ host computer.</p> <p>Enter the computer's IP address and click "Apply" to activate the DMZ host.</p> <p>Clear the IP address field and click "Apply" to deactivate the DMZ host.</p> </div> <div style="border: 1px solid black; padding: 5px; margin-top: 5px;"> <p>DMZ HOST</p> <p>DMZ Host IP Address : <input type="text"/></p> <p style="text-align: center;"> <input type="button" value="Apply"/> <input type="button" value="Cancel"/> </p> </div>				<p>Helpful Hints...</p> <p>Enable the DMZ option only as a last resort. If you are having trouble using an application from a computer behind the router, first try opening ports associated with the application in the Advanced -> Port Forwarding section.</p> <p>More...</p>
Port Forwarding					
Port Triggering					
DMZ					
Parental Control					
Filtering Options					
Firewall Settings					
DNS					
Dynamic DNS					
Network Tools					
Routing					
Schedules					
Logout					
BROADBAND					

DSL-2740B	SETUP	ADVANCED	MAINTENANCE	STATUS	HELP
Advanced Wireless	<div style="border: 1px solid black; padding: 5px;"> <p>PARENTAL CONTROL -- BLOCK WEBSITE</p> <p>Uses URL (i.e. www.yahoo.com) to impliment filtering.</p> <p style="text-align: center;"><input type="button" value="Block Website"/></p> </div> <div style="border: 1px solid black; padding: 5px; margin-top: 5px;"> <p>PARENTAL CONTROL -- BLOCK MAC ADDRESS</p> <p>Uses MAC address to impliment filtering.</p> <p style="text-align: center;"><input type="button" value="Block MAC Address"/></p> </div>				
Port Forwarding					
Port Triggering					
DMZ					
Parental Control					
Filtering Options					
Firewall Settings					
DNS					
Dynamic DNS					
Network Tools					
Routing					
Schedules					
Logout					
BROADBAND					



DSL-2740B //	SETUP	ADVANCED	MAINTENANCE	STATUS	HELP				
Advanced Wireless	<p>BLOCK WEBSITE</p> <p>This page allows you to block websites. If enabled, the websites listed here will be denied access to clients trying to browse that website.</p> <p>BLOCK WEBSITE</p> <table border="1"> <thead> <tr> <th>URL</th> <th>Schedule Rule</th> </tr> </thead> <tbody> <tr> <td> </td> <td> </td> </tr> </tbody> </table> <p style="text-align: center;"> <input type="button" value="Add"/> <input type="button" value="Edit"/> <input type="button" value="Delete"/> </p>				URL	Schedule Rule			<p>Helpful Hints...</p> <p>Create a list of websites that you would like the devices on your network to be allowed or denied access to.</p> <p>More...</p>
URL	Schedule Rule								
Port Forwarding									
Port Triggering									
DMZ									
Parental Control									
Filtering Options									
Firewall Settings									
DNS									
Dynamic DNS									
Network Tools									
Routing									
Schedules									
Logout									
BROADBAND									



DSL-2740B //	SETUP	ADVANCED	MAINTENANCE	STATUS	HELP				
Advanced Wireless	<p>BLOCK WEBSITE</p> <p>This page allows you to block websites. If enabled, the websites listed here will be denied access to clients trying to browse that website.</p> <p>BLOCK WEBSITE</p> <table border="1"> <thead> <tr> <th>URL</th> <th>Schedule Rule</th> </tr> </thead> <tbody> <tr> <td> </td> <td> </td> </tr> </tbody> </table> <p style="text-align: center;"> <input type="button" value="Add"/> <input type="button" value="Edit"/> <input type="button" value="Delete"/> </p> <p>BLOCK WEBSITE</p> <p>URL : <input type="text"/></p> <p>Schedule: <input type="button" value="Always"/> <input type="button" value="View Schedule Details"/> <ul style="list-style-type: none"> Always pingin Never <input type="button" value="Apply"/> <input type="button" value="Cancel"/> </p>				URL	Schedule Rule			<p>Helpful Hints...</p> <p>Create a list of websites that you would like the devices on your network to be allowed or denied access to.</p> <p>More...</p>
URL	Schedule Rule								
Port Forwarding									
Port Triggering									
DMZ									
Parental Control									
Filtering Options									
Firewall Settings									
DNS									
Dynamic DNS									
Network Tools									
Routing									
Schedules									
Logout									
BROADBAND									



DSL-2740B //	SETUP	ADVANCED	MAINTENANCE	STATUS	HELP						
<ul style="list-style-type: none"> Advanced Wireless Port Forwarding Port Triggering DMZ Parental Control Filtering Options Firewall Settings DNS Dynamic DNS Network Tools Routing Schedules Logout 	<h3>BLOCK MAC ADDRESS</h3> <p>This page adds a time of day restriction to a special LAN device connected to the router. The "Browser's MAC Address" automatically displays the MAC address of the LAN device where the browser is running. To restrict another LAN device, click the "Other MAC Address" button and enter the MAC address of the other LAN device. To find out the MAC address of a Windows-based PC, open a command prompt window and type "ipconfig /all".</p> <h4>BLOCK MAC ADDRESS</h4> <table border="1"> <thead> <tr> <th>Username</th> <th>MAC</th> <th>Schedule Rule</th> </tr> </thead> <tbody> <tr> <td><input type="text"/></td> <td><input type="text"/></td> <td><input type="text"/></td> </tr> </tbody> </table> <p style="text-align: center;"> <input type="button" value="Add"/> <input type="button" value="Edit"/> </p>				Username	MAC	Schedule Rule	<input type="text"/>	<input type="text"/>	<input type="text"/>	<p>Helpful Hints...</p> <p>Give each rule a name that is meaningful to you. For example, a schedule for Monday through Friday from 3:00pm to 9:00pm, might be called "After School" and enter the MAC address that you want to deny access to the internet.</p> <p>More...</p>
Username	MAC	Schedule Rule									
<input type="text"/>	<input type="text"/>	<input type="text"/>									
BROADBAND											



DSL-2740B //	SETUP	ADVANCED	MAINTENANCE	STATUS	HELP						
<ul style="list-style-type: none"> Advanced Wireless Port Forwarding Port Triggering DMZ Parental Control Filtering Options Firewall Settings DNS Dynamic DNS Network Tools Routing Schedules Logout 	<h3>BLOCK MAC ADDRESS</h3> <p>This page adds a time of day restriction to a special LAN device connected to the router. The "Browser's MAC Address" automatically displays the MAC address of the LAN device where the browser is running. To restrict another LAN device, click the "Other MAC Address" button and enter the MAC address of the other LAN device. To find out the MAC address of a Windows-based PC, open a command prompt window and type "ipconfig /all".</p> <h4>BLOCK MAC ADDRESS</h4> <table border="1"> <thead> <tr> <th>Username</th> <th>MAC</th> <th>Schedule Rule</th> </tr> </thead> <tbody> <tr> <td><input type="text"/></td> <td><input type="text"/></td> <td><input type="text"/></td> </tr> </tbody> </table> <p style="text-align: center;"> <input type="button" value="Add"/> <input type="button" value="Edit"/> </p> <h4>TIME OF DAY RESTRICTION</h4> <p>User Name <input type="text"/></p> <p> <input checked="" type="radio"/> Browser's MAC Address <input type="text" value="00:80:C8:DA:11:E3"/> </p> <p> <input type="radio"/> Other MAC Address <input type="text"/> <small>(xx:xx:xx:xx:xx:xx)</small> </p> <p>Blocking on Schedule: <input type="text" value="Always"/> View Schedule Details</p> <p style="margin-left: 20px;"> <input type="text" value="Always"/> <input type="text" value="pingin"/> <input type="text" value="Never"/> </p> <p style="text-align: center;"> <input type="button" value="Apply"/> <input type="button" value="Cancel"/> </p>				Username	MAC	Schedule Rule	<input type="text"/>	<input type="text"/>	<input type="text"/>	<p>Helpful Hints...</p> <p>Give each rule a name that is meaningful to you. For example, a schedule for Monday through Friday from 3:00pm to 9:00pm, might be called "After School" and enter the MAC address that you want to deny access to the internet.</p> <p>More...</p>
Username	MAC	Schedule Rule									
<input type="text"/>	<input type="text"/>	<input type="text"/>									
BROADBAND											



DSL-2740B //	SETUP	ADVANCED	MAINTENANCE	STATUS	HELP
Advanced Wireless	FILTER -- INBOUND IP FILTER				
Port Forwarding	Manage incoming traffic.				
Port Triggering	<input type="button" value="Inbound"/>				
DMZ	FILTER -- OUTBOUND IP FILTER				
Parental Control	Manage outgoing traffic.				
Filtering Options	<input type="button" value="Outbound"/>				
Firewall Settings	FILTER -- BRIDGE FILTER				
DNS	Uses MAC address to impliment filtering. Usefull only in bridge mode.				
Dynamic DNS	<input type="button" value="Bridge"/>				
Network Tools					
Routing					
Schedules					
Logout					
BROADBAND					

DSL-2740B //	SETUP	ADVANCED	MAINTENANCE	STATUS	HELP																
Advanced Wireless	INCOMING IP FILTERING				Helpful Hints... Give each rule a Name that is meaningful to you. The Source IP addresses are WAN-side address and the Destination IP address are LAN-side address Click the Apply button to store a finished rule in the Rules List. More...																
Port Forwarding	The screen allows you to create a filter rule to identify incoming IP traffic by specifying a new filter name and at least one condition below. All of the specified conditions in this filter rule must be satisfied for the rule to take effect. Click 'Apply' to save and activate the filter. By default, all incoming IP traffic from WAN is blocked when the firewall is enabled, but some IP traffic can be ACCEPTED by setting up filters.																				
Port Triggering	ACTIVE INBOUND FILTER																				
DMZ	<table border="1"> <thead> <tr> <th>Name</th> <th>VPI/VCI</th> <th>Protocol</th> <th>Source Address Range</th> <th>Source Port</th> <th>Dest. Address Range</th> <th>Dest. Port</th> <th>Schedule Rule</th> </tr> </thead> <tbody> <tr> <td> </td> <td> </td> <td> </td> <td> </td> <td> </td> <td> </td> <td> </td> <td> </td> </tr> </tbody> </table>					Name	VPI/VCI	Protocol	Source Address Range	Source Port	Dest. Address Range	Dest. Port	Schedule Rule								
Name	VPI/VCI	Protocol	Source Address Range	Source Port		Dest. Address Range	Dest. Port	Schedule Rule													
Parental Control	<input type="button" value="Add"/> <input type="button" value="Edit"/> <input type="button" value="Delete"/>																				
Filtering Options	INBOUND IP FILTERING																				
Firewall Settings	Filter Name : <input type="text"/> Protocol : <input type="button" value="(Click to select)"/>																				
DNS	Source IP address range : <input type="text"/> to <input type="text"/> Source Port : <input type="text"/> (port or port:port)																				
Dynamic DNS	Destination IP address range : <input type="text"/> to <input type="text"/> Destination Port : <input type="text"/> (port or port:port)																				
Network Tools	Schedule : <input type="button" value="Always"/> View Available Schedules																				
Routing	WAN Interfaces (Configured in Routing mode and with firewall enabled only) Select at least one or multiple WAN interfaces displayed below to apply this rule.																				
Schedules	<input checked="" type="checkbox"/> Select All <input checked="" type="checkbox"/> pppoe_8_35_1/ppp_8_35_1																				
Logout	<input type="button" value="Apply"/> <input type="button" value="Cancel"/>																				



DSL-2740B	SETUP	ADVANCED	MAINTENANCE	STATUS	HELP										
Advanced Wireless	<h3>OUTGOING IP FILTERING</h3> <p>This screen allows you to create a filter rule to identify outgoing IP traffic by specifying a new filter name and at least one condition below. All of the specified conditions in this filter rule must be satisfied for the rule to take effect. Click "Apply" to save and activate the filter.</p> <p>By default, all outgoing IP traffic from LAN is allowed, but some IP traffic can be BLOCKED by setting up filters.</p>				Helpful Hints... Each rule can Deny outgoing traffic from the LAN. Click the Remove checkbox in the Rules List then click on the Remove button to permanently remove a rule. More...										
Port Forwarding	<h3>ACTIVE OUTBOUND FILTER</h3> <table border="1"> <thead> <tr> <th>Name</th> <th>Protocol</th> <th>Source Address Range</th> <th>Source Port</th> <th>Dest. Address Range</th> </tr> </thead> <tbody> <tr> <td><input type="checkbox"/> pingout</td> <td>ICMP</td> <td>192.168.1.90/192.168.1.90</td> <td></td> <td>61.88.88.88/61.88.88.8</td> </tr> </tbody> </table> <p style="text-align: center;"> <input type="button" value="Add"/> <input type="button" value="Edit"/> <input type="button" value="Delete"/> </p>					Name	Protocol	Source Address Range	Source Port	Dest. Address Range	<input type="checkbox"/> pingout	ICMP	192.168.1.90/192.168.1.90		61.88.88.88/61.88.88.8
Name	Protocol	Source Address Range	Source Port	Dest. Address Range											
<input type="checkbox"/> pingout	ICMP	192.168.1.90/192.168.1.90		61.88.88.88/61.88.88.8											
Port Triggering	<h3>OUTBOUND IP FILTERING</h3> <p>Filter Name : <input type="text"/></p> <p>Protocol : <input type="button" value="(Click to select)"/></p> <p>Source IP addressrange : <input type="text"/> to <input type="text"/></p> <p>Source Port : <input type="text"/> (port or port:port)</p> <p>Destination IP address range : <input type="text"/> to <input type="text"/></p> <p>Destination Port : <input type="text"/> (port or port:port)</p> <p>Schedule : <input type="button" value="Always"/> View Available Schedules</p> <p style="text-align: center;"> <input type="button" value="Apply"/> <input type="button" value="Cancel"/> </p>														
DMZ															
Parental Control															
Filtering Options															
Firewall Settings															
DNS															
Dynamic DNS															
Network Tools															
Routing															
Schedules															
Logout															



DSL-2740B	SETUP	ADVANCED	MAINTENANCE	STATUS	HELP												
Advanced Wireless	<h3>BRIDGE FILTERING</h3> <p>Bridge Filtering is only effective on ATM PVCs configured in Bridge mode. ALLOW means that all MAC layer frames will be ALLOWED except those matching with any of the specified rules in the following table. DENY means that all MAC layer frames will be DENIED except those matching with any of the specified rules in the following table.</p> <p>Create a filter to identify the MAC layer frames by specifying at least one condition below. If multiple conditions are specified, all of them take effect. Click "Apply" to save and activate the filter.</p> <p>Bridge Filtering Global Policy:</p> <p><input checked="" type="radio"/> ALLOW all packets but DENY those matching any of specific rules listed</p> <p><input type="radio"/> DENY all packets but ALLOW those matching any of specific rules listed</p> <p style="text-align: center;"> <input type="button" value="Apply"/> <input type="button" value="Cancel"/> </p>				Helpful Hints... Note : You must first create a Bridged connection to use Bridge Filter . You can create a Bridged connection by going to Setup -> Internet Setup . More...												
Port Forwarding	<h3>BRIDGE FILTER SETUP</h3> <table border="1"> <thead> <tr> <th>VPI/VCI</th> <th>Protocol</th> <th>Destination MAC</th> <th>Source MAC</th> <th>Frame Direction</th> <th>Schedule Rule</th> </tr> </thead> <tbody> <tr> <td><input type="button" value="Add"/></td> <td><input type="button" value="Edit"/></td> <td><input type="button" value="Delete"/></td> <td colspan="3"></td> </tr> </tbody> </table> <p style="text-align: center;"> <input type="button" value="Add"/> <input type="button" value="Edit"/> <input type="button" value="Delete"/> </p>					VPI/VCI	Protocol	Destination MAC	Source MAC	Frame Direction	Schedule Rule	<input type="button" value="Add"/>	<input type="button" value="Edit"/>	<input type="button" value="Delete"/>			
VPI/VCI	Protocol	Destination MAC	Source MAC	Frame Direction		Schedule Rule											
<input type="button" value="Add"/>	<input type="button" value="Edit"/>	<input type="button" value="Delete"/>															
Port Triggering																	
DMZ																	
Parental Control																	
Filtering Options																	
Firewall Settings																	
DNS																	
Dynamic DNS																	
Network Tools																	
Routing																	
Schedules																	
Logout																	

- Advanced Wireless
- Port Forwarding
- Port Triggering
- DMZ
- Parental Control
- Filtering Options
- Firewall Settings
- DNS
- Dynamic DNS
- Network Tools
- Routing
- Schedules
- Logout

BRIDGE FILTERING

Bridge Filtering is only effective on ATM PVCs configured in Bridge mode. **ALLOW** means that all MAC layer frames will be **ALLOWED** except those matching with any of the specified rules in the following table. **DENY** means that all MAC layer frames will be **DENIED** except those matching with any of the specified rules in the following table.

Create a filter to identify the MAC layer frames by specifying at least one condition below. If multiple conditions are specified, all of them take effect. Click "Apply" to save and activate the filter.

Bridge Filtering Global Policy:

ALLOW all packets but **DENY** those matching any of specific rules listed

DENY all packets but **ALLOW** those matching any of specific rules listed

Helpful Hints...

Note : You must first create a **Bridged** connection to use **Bridge Filter**.

You can create a **Bridged** connection by going to **Setup -> Internet Setup**.

[More...](#)

BRIDGE FILTER SETUP

VPI/VCI	Protocol	Destination MAC	Source MAC	Frame Direction	Schedule Rule

ADD BRIDGE FILTER

Protocol Type : (Click to select) ▾

Destination MAC Address :

Source MAC Address :

Frame Direction : LAN<=>WAN ▾

Schedule: Always Allowed ▾ [View Schedule Details](#)

WAN Interfaces (Configured in Bridge mode only)

Select All

- Parental Control
- Filtering Options
- Firewall Settings
- DNS
- Dynamic DNS
- Network Tools
- Routing
- Schedules
- Logout

matching with any of the specified rules in the following table.

Create a filter to identify the MAC layer frames by specifying at least one condition below. If multiple conditions are specified, all of them take effect. Click "Apply" to save and activate the filter.

Bridge Filtering Global Policy:

ALLOW all packets but **DENY** those matching any of specific rules listed

DENY all packets but **ALLOW** those matching any of specific rules listed

You can create a **Bridged** connection by going to **Setup -> Internet Setup**.

[More...](#)

BRIDGE FILTER SETUP

VPI/VCI	Protocol	Destination MAC	Source MAC	Frame Direction	Schedule Rule

ADD BRIDGE FILTER

Protocol Type : (Click to select) ▾

Destination MAC Address : (Click to select) ▾

Source MAC Address : (Click to select) ▾

Frame Direction : (Click to select) ▾

Schedule: Always Allowed ▾ [View Schedule Details](#)

WAN Interfaces (Configured in Bridge mode only)

Select All



DSL-2740B	SETUP	ADVANCED	MAINTENANCE	STATUS	HELP												
Advanced Wireless	FIREWALL SETTINGS				Helpful Hints... If Enable Attack Prevent checkbox is selected, the router will detect some attacks. When the router detects attack, it will drop the packets and log them in the "System log". If Prevent IP Spoofing checkbox is selected, the router will drop the packets from WAN interface with private source IP address. The private IP address ranges are as: 10.0.0.0/8, 172.16.0.0/12, and 192.168.0.0/16. More...												
Port Forwarding	Click "Apply" button to make the changes effective immediately.																
Port Triggering	FIREWALL CONFIGURATION																
DMZ	<input checked="" type="checkbox"/> PPP Pass through <input type="checkbox"/> Enable Attack Prevent																
Parental Control	<table border="1"> <thead> <tr> <th>Type</th> <th>Rate(pkt/sec)</th> <th>Burst</th> </tr> </thead> <tbody> <tr> <td>TCP DoS :</td> <td><input type="text" value="0"/></td> <td><input type="text" value="0"/></td> </tr> <tr> <td>Ping DoS :</td> <td><input type="text" value="0"/></td> <td><input type="text" value="0"/></td> </tr> <tr> <td>Port Scan :</td> <td><input type="text" value="0"/></td> <td><input type="text" value="0"/></td> </tr> </tbody> </table>					Type	Rate(pkt/sec)	Burst	TCP DoS :	<input type="text" value="0"/>	<input type="text" value="0"/>	Ping DoS :	<input type="text" value="0"/>	<input type="text" value="0"/>	Port Scan :	<input type="text" value="0"/>	<input type="text" value="0"/>
Type	Rate(pkt/sec)	Burst															
TCP DoS :	<input type="text" value="0"/>	<input type="text" value="0"/>															
Ping DoS :	<input type="text" value="0"/>	<input type="text" value="0"/>															
Port Scan :	<input type="text" value="0"/>	<input type="text" value="0"/>															
Filtering Options	Prevent IP Spoofing : <input type="checkbox"/>																
Firewall Settings	<input type="button" value="Apply"/> <input type="button" value="Cancel"/>																
DNS																	
Dynamic DNS																	
Network Tools																	
Routing																	
Schedules																	
Logout																	
BROADBAND																	



DSL-2740B	SETUP	ADVANCED	MAINTENANCE	STATUS	HELP
Advanced Wireless	DNS				Helpful Hints... If Obtain DNS server address automatically selected, this router will accept the first received DNS assignment from one of the PPPoA, PPPoE or MER/DHCP enabled PVC(s) during the connection establishment. If Use the following DNS server addresses is selected, enter the Preferred and optional Alternate DNS server IP addresses. More...
Port Forwarding	Click "Apply" button to save the new configuration. You must reboot the router to make the new configuration effective.				
Port Triggering	DNS SERVER CONFIGURATION				
DMZ	<input checked="" type="radio"/> Obtain DNS server address automatically <input type="radio"/> Use the following DNS server addresses				
Parental Control	Preferred DNS server : <input type="text"/>				
Filtering Options	Alternate DNS server : <input type="text"/>				
Firewall Settings	<input type="button" value="Apply"/> <input type="button" value="Cancel"/>				
DNS					
Dynamic DNS					
Network Tools					
Routing					
Schedules					
Logout					
BROADBAND					



DSL-2740B	SETUP	ADVANCED	MAINTENANCE	STATUS	HELP								
Advanced Wireless	<div style="background-color: #f0f0f0; padding: 5px;"> <p>DDNS</p> <p>This page allows you to add a Dynamic DNS address.</p> <p>The Dynamic DNS service allows you to alias a dynamic IP address to a static hostname in any of the many domains, allowing your DSL router to be more easily accessed from various locations on the Internet.</p> <p>Choose Add or Remove to configure Dynamic DNS.</p> </div> <div style="border: 1px solid #ccc; padding: 5px; margin-top: 5px;"> <p>DYNAMIC DNS</p> <table border="1" style="width: 100%; border-collapse: collapse;"> <thead> <tr> <th style="width: 25%;">Hostname</th> <th style="width: 25%;">Username</th> <th style="width: 25%;">Service</th> <th style="width: 25%;">Interface</th> </tr> </thead> <tbody> <tr> <td> </td> <td> </td> <td> </td> <td> </td> </tr> </tbody> </table> <p style="text-align: center; margin-top: 10px;"> <input type="button" value="Add"/> <input type="button" value="Edit"/> <input type="button" value="Delete"/> </p> </div> <div style="border: 1px solid #ccc; padding: 5px; margin-top: 5px;"> <p>ADD DYNAMIC DNS</p> <p>D-DNS provider : <input type="text" value="dlinkddns.com(Free)"/></p> <p>Hostname : <input type="text"/></p> <p>Interface : <input type="text" value="ppp_8_35_1"/></p> <p>Username : <input type="text"/></p> <p>Password : <input type="text"/></p> <p style="text-align: center; margin-top: 10px;"> <input type="button" value="Apply"/> <input type="button" value="Cancel"/> </p> </div>				Hostname	Username	Service	Interface					<p>Helpful Hints...</p> <p>DDNS - This stands for Dynamic DNS. By creating a static hostname, users will be able to point to this in order to access a dynamic IP address from anywhere in the world.</p> <p>Note:In some cases DDNS service require you to open the WAN http service in Maintenance -> Access Control -> Services.</p> <p>More...</p>
Hostname					Username	Service	Interface						
Port Forwarding													
Port Triggering													
DMZ													
Parental Control													
Filtering Options													
Firewall Settings													
DNS													
Dynamic DNS													
Network Tools													
Routing													
Schedules													
Logout													
BROADBAND													



DSL-2740B	SETUP	ADVANCED	MAINTENANCE	STATUS	HELP								
Advanced Wireless	<div style="background-color: #f0f0f0; padding: 5px;"> <p>DDNS</p> <p>This page allows you to add a Dynamic DNS address.</p> <p>The Dynamic DNS service allows you to alias a dynamic IP address to a static hostname in any of the many domains, allowing your DSL router to be more easily accessed from various locations on the Internet.</p> <p>Choose Add or Remove to configure Dynamic DNS.</p> </div> <div style="border: 1px solid #ccc; padding: 5px; margin-top: 5px;"> <p>DYNAMIC DNS</p> <table border="1" style="width: 100%; border-collapse: collapse;"> <thead> <tr> <th style="width: 25%;">Hostname</th> <th style="width: 25%;">Username</th> <th style="width: 25%;">Service</th> <th style="width: 25%;">Interface</th> </tr> </thead> <tbody> <tr> <td> </td> <td> </td> <td> </td> <td> </td> </tr> </tbody> </table> <p style="text-align: center; margin-top: 10px;"> <input type="button" value="Add"/> <input type="button" value="Edit"/> <input type="button" value="Delete"/> </p> </div> <div style="border: 1px solid #ccc; padding: 5px; margin-top: 5px;"> <p>ADD DYNAMIC DNS</p> <p>D-DNS provider : <input type="text" value="dlinkddns.com(Free)"/></p> <p>Hostname : <input type="text"/></p> <p>Interface : <input type="text" value="ppp_8_35_1"/></p> <p>Username : <input type="text"/></p> <p>Password : <input type="text"/></p> <p style="text-align: center; margin-top: 10px;"> <input type="button" value="Apply"/> <input type="button" value="Cancel"/> </p> </div>				Hostname	Username	Service	Interface					<p>Helpful Hints...</p> <p>DDNS - This stands for Dynamic DNS. By creating a static hostname, users will be able to point to this in order to access a dynamic IP address from anywhere in the world.</p> <p>Note:In some cases DDNS service require you to open the WAN http service in Maintenance -> Access Control -> Services.</p> <p>More...</p>
Hostname					Username	Service	Interface						
Port Forwarding													
Port Triggering													
DMZ													
Parental Control													
Filtering Options													
Firewall Settings													
DNS													
Dynamic DNS													
Network Tools													
Routing													
Schedules													
Logout													

DSL-2740B	SETUP	ADVANCED	MAINTENANCE	STATUS	HELP
Advanced Wireless	NETWORK TOOLS -- PORT MAPPING				
Port Forwarding	Port Mapping supports multiple port to PVC and bridging groups. Each group will perform as an independent network.				
Port Triggering	Port Mapping				
DMZ	NETWORK TOOLS -- IGMP				
Parental Control	Transmission of identical content, such as multimedia, from a source to a number of recipients.				
Filtering Options	IGMP				
Firewall Settings	NETWORK TOOLS -- QOS				
DNS	Allows you to manually configure special routes that your network might need.				
Dynamic DNS	Quality of Service				
Network Tools	NETWORK TOOLS -- ADSL				
Routing	Allows you to configure Default Gateway used by WAN Interface.				
Schedules	ADSL Settings				
Logout	NETWORK TOOLS -- SNMP				
	Allows you to configure SNMP (Simple Network Management Protocol).				
	SNMP				
	NETWORK TOOLS -- TR-069				
	Allows you to configure TR-069 protocol.				
	TR-069				

DSL-2740B	SETUP	ADVANCED	MAINTENANCE	STATUS	HELP								
Advanced Wireless	PORT MAPPING SETTINGS												
Port Forwarding	This section is used to configure the port mapping to support VLAN.												
Port Triggering	Port Mapping supports multiple ports to PVC and bridging groups. Each group will perform as an independent network. To support this feature, you must create mapping groups with appropriate LAN and WAN interfaces using the Add button. The Remove button will remove the grouping and add the ungrouped interfaces to the Default group. Only the default group has IP interface.												
DMZ	PORT MAPPING												
Parental Control	<input type="checkbox"/> Enable virtual ports on <input type="text" value="eth0"/>												
Filtering Options	<table border="1"> <thead> <tr> <th>Group Name</th> <th>Interfaces</th> <th>Remove</th> <th>Edit</th> </tr> </thead> <tbody> <tr> <td>Default</td> <td>eth0, Wireless, Wireless_Guest1, Wireless_Guest2, Wireless_Guest3</td> <td></td> <td></td> </tr> </tbody> </table>					Group Name	Interfaces	Remove	Edit	Default	eth0, Wireless, Wireless_Guest1, Wireless_Guest2, Wireless_Guest3		
Group Name	Interfaces	Remove	Edit										
Default	eth0, Wireless, Wireless_Guest1, Wireless_Guest2, Wireless_Guest3												
Firewall Settings	Add												
DNS													
Dynamic DNS													
Network Tools													
Routing													
Schedules													
Logout													

DSL-2740B	SETUP	ADVANCED	MAINTENANCE	STATUS	HELP
Advanced Wireless	<h3>PORT MAPPING</h3> <p>To create a new mapping group:</p> <ol style="list-style-type: none"> 1. Enter the Group name and select interfaces from the available interface list and add it to the grouped interface list using the arrow buttons to create the required mapping of the ports. The group name must be unique. 2. If you like to automatically add LAN clients to a PVC in the new group add the DHCP vendor ID string. By configuring a DHCP vendor ID string any DHCP client request with the specified vendor ID (DHCP option 60) will be denied an IP address from the local DHCP server. Note that these clients may obtain public IP addresses 3. Click "Apply" button to make the changes effective immediately 				<p>Helpful Hints...</p> <p>You can map PVC1 to port 1~3 to create a network (broadcast domain) for PCs toward Internet, and map PVC2 to port 4 to create another network (broadcast domain) for IPTV service(devices).</p> <p>Note that the selected interfaces will be removed from their existing groups and added to the new group.</p> <p>IMPORTANT If a vendor ID is configured for a specific client device, please REBOOT the client device attached to the modem to allow it to obtain an appropriate IP address.</p> <p>More...</p>
Port Forwarding	<h3>PORT MAPPING CONFIGURATION</h3> <p>Group Name: <input type="text"/></p> <div style="display: flex; justify-content: space-between;"> <div style="width: 45%;"> <p>Grouped Interfaces</p> <div style="border: 1px solid gray; height: 100px; width: 100%;"></div> </div> <div style="width: 10%; text-align: center;"> <p>-></p> <p><-</p> </div> <div style="width: 45%;"> <p>Available Interfaces</p> <div style="border: 1px solid gray; padding: 5px;"> eth0 Wireless Wireless_Guest1 Wireless_Guest2 Wireless_Guest3 </div> </div> </div> <p>Automatically Add Clients With the following DHCP Vendor IDs</p> <input type="text"/> <input type="text"/> <input type="text"/> <input type="text"/> <input type="text"/>				
Port Triggering	<input type="button" value="Apply"/> <input type="button" value="Cancel"/>				
DMZ					
Parental Control					
Filtering Options					
Firewall Settings					
DNS					
Dynamic DNS					
Network Tools					
Routing					
Schedules					
Logout					



DSL-2740B	SETUP	ADVANCED	MAINTENANCE	STATUS	HELP
Advanced Wireless	<h3>IGMP</h3> <p>Transmission of identical content, such as multimedia, from a source to a number of recipients.</p>				<p>Helpful Hints...</p> <p>With IGMP Snooping enabled, the device (L2 switch) can make intelligent multicast forwarding (only) toward those hosts, i.e. IPSTBs etc., which request to join (as members of) a specific multicast group, i.e. a IPTV channel etc., within the broadcast domain (same PVC/VLAN). As a result, it significantly reduces traffic flooding upon interfaces which are not registered as receivers of specific multicast group.</p> <p>More...</p>
Port Forwarding	<h3>IGMP SETUP</h3> <p><input type="checkbox"/> Enable IGMP Snooping</p> <p><input checked="" type="radio"/> Standard Mode</p> <p><input type="radio"/> Blocking Mode</p>				
Port Triggering	<input type="button" value="Apply"/> <input type="button" value="Cancel"/>				
DMZ					
Parental Control					
Filtering Options					
Firewall Settings					
DNS					
Dynamic DNS					
Network Tools					
Routing					
Schedules					
Logout					



DSL-2740B // **SETUP** **ADVANCED** **MAINTENANCE** **STATUS** **HELP**

- Advanced Wireless
- Port Forwarding
- Port Triggering
- DMZ
- Parental Control
- Filtering Options
- Firewall Settings
- DNS
- Dynamic DNS
- Network Tools
- Routing
- Schedules
- Logout

QOS

Choose Add or Remove to configure network traffic classes.

The screen creates a traffic class rule to classify the upstream traffic, assign queuing priority and optionally overwrite the IP header TOS byte. A rule consists of a class name and at least one condition below. All of the specified conditions in this classification rule must be satisfied for the rule to take effect. Click "Apply" to save and activate the rule.

QUALITY OF SERVICE SETUP

MARK						
Name	Priority	IP Precedence	Type of Service	WAN 802.1P	Details	Remove

DIFFERENTIATED SERVICE CONFIGURATION

MARK				
Class Name	Priority	DSCP Mark	Details	Remove

BROADBAND

- Routing
- Schedules
- Logout

DIFFERENTIATED SERVICE CONFIGURATION

MARK				
Class Name	Priority	DSCP Mark	Details	Remove

NETWORK TRAFFIC CLASS RULE

Traffic Class Name:

Enable Differentiated Service Configuration

Assign ATM Transmit Priority:	<input type="text"/>
Mark IP Precedence:	<input type="text"/>
Mark IP Type Of Service:	<input type="text"/>
Mark 802.1p if 802.1q is enabled on WAN:	<input type="text"/>

Specify Traffic Classification Rules
Enter the following conditions either for IP level, SET-1, or for IEEE 802.1p, SET-2.

SET-1

Protocol:	<input type="text"/>
Source IP Address:	<input type="text"/>
Source Subnet Mask:	<input type="text"/>
UDP/TCP Source Port (port or port:port):	<input type="text"/>
Destination IP Address:	<input type="text"/>
Destination Subnet Mask:	<input type="text"/>
UDP/TCP Destination Port (port or port:port):	<input type="text"/>

SET-2

802.1p Priority:	<input type="text"/>
------------------	----------------------



DSL-2740B	SETUP	ADVANCED	MAINTENANCE	STATUS	HELP
<ul style="list-style-type: none"> Advanced Wireless Port Forwarding Port Triggering DMZ Parental Control Filtering Options Firewall Settings DNS Dynamic DNS Network Tools Routing Schedules Logout 	<p>ADSL</p> <p>This page allows you to configure the modems ADSL modulation.</p> <p>Select the modulation below.</p> <p>ADSL SETTINGS</p> <ul style="list-style-type: none"> <input checked="" type="checkbox"/> G.Dmt Enabled <input checked="" type="checkbox"/> G.lite Enabled <input checked="" type="checkbox"/> T1.413 Enabled <input checked="" type="checkbox"/> ADSL2 Enabled <input checked="" type="checkbox"/> AnnexL Enabled <input checked="" type="checkbox"/> ADSL2+ Enabled <input type="checkbox"/> AnnexM Enabled <p>Capability</p> <ul style="list-style-type: none"> <input checked="" type="checkbox"/> Bitswap Enable <input type="checkbox"/> SRA Enable <p>Advanced Settings Apply Cancel</p>				<p>Helpful Hints...</p> <p>Do not change these settings unless directed by your ISP.</p> <p>More...</p>
BROADBAND					



DSL-2740B	SETUP	ADVANCED	MAINTENANCE	STATUS	HELP
<ul style="list-style-type: none"> Advanced Wireless Port Forwarding Port Triggering DMZ Parental Control Filtering Options Firewall Settings DNS Dynamic DNS Network Tools Routing Schedules Logout 	<p>ADSL</p> <p>Select the test mode below.</p> <p>ADSL SETTINGS</p> <ul style="list-style-type: none"> <input checked="" type="radio"/> Normal <input type="radio"/> Reverb <input type="radio"/> Medley <input type="radio"/> No retrain <input type="radio"/> L3 <p>Tone Selection Apply Cancel</p>				<p>Helpful Hints...</p> <p>Do not change these settings unless directed by your ISP.</p> <p>More...</p>
BROADBAND					



DSL-2740B	SETUP	ADVANCED	MAINTENANCE	STATUS	HELP
Advanced Wireless	<h3>SNMP</h3> <p>Simple Network Management Protocol (SNMP) allows a management application to retrieve statistics and status from the SNMP agent in this device.</p> <p>Select the desired values and click "Apply" to configure the SNMP options.</p> <h4>SNMP -- CONFIGURATION</h4> <p>Enable SNMP Agent : <input checked="" type="checkbox"/></p> <p>Read Community : <input type="text" value="public"/></p> <p>Set Community : <input type="text" value="private"/></p> <p>System Name : <input type="text" value="DSL2740B"/></p> <p>System Location : <input type="text" value="unknown"/></p> <p>System Contact : <input type="text" value="unknown"/></p> <p>Trap Manager IP : <input type="text" value="0.0.0.0"/></p> <p><input type="button" value="Apply"/> <input type="button" value="Cancel"/></p>				<p>Helpful Hints...</p> <p>Provides a means to monitor status and performance as well as set configuration parameters.</p> <p>More...</p>
Port Forwarding					
Port Triggering					
DMZ					
Parental Control					
Filtering Options					
Firewall Settings					
DNS					
Dynamic DNS					
Network Tools					
Routing					
Schedules					
Logout					
BROADBAND					



DSL-2740B	SETUP	ADVANCED	MAINTENANCE	STATUS	HELP
Advanced Wireless	<h3>TR-069 CLIENT</h3> <p>WAN Management Protocol (TR-069) allows a Auto-Configuration Server (ACS) to perform auto-configuration, provision, collection, and diagnostics to this device.</p> <p>Select the desired values and click "Apply" to configure the TR-069 client options.</p> <h4>TR-069 CLIENT -- CONFIGURATION</h4> <p>Inform <input checked="" type="radio"/> Disable <input type="radio"/> Enable</p> <p>Inform Interval: <input type="text" value="300"/></p> <p>ACS URL: <input type="text"/></p> <p>ACS User Name: <input type="text" value="admin"/></p> <p>ACS Password: <input type="password" value="•••••"/></p> <p>Connection Request User Name: <input type="text" value="admin"/></p> <p>Connection Request Password: <input type="password" value="•••••"/></p> <p><input type="button" value="GetRPCMethods"/> <input type="button" value="Apply"/> <input type="button" value="Cancel"/></p>				<p>Helpful Hints...</p> <p>Provides a means to monitor status and performance as well as set configuration parameters from WAN side.</p> <p>More...</p>
Port Forwarding					
Port Triggering					
DMZ					
Parental Control					
Filtering Options					
Firewall Settings					
DNS					
Dynamic DNS					
Network Tools					
Routing					
Schedules					
Logout					
BROADBAND					



DSL-2740B //	SETUP	ADVANCED	MAINTENANCE	STATUS	HELP
Advanced Wireless	ROUTING -- STATIC ROUTE				
Port Forwarding	Allows you to manually configure special routes that your network might need.				
Port Triggering	<input type="button" value="Static Route"/>				
DMZ	ROUTING -- DEFAULT GATEWAY				
Parental Control	Allows you to configure Default Gateway used by WAN Interface.				
Filtering Options	<input type="button" value="Default Gateway"/>				
Firewall Settings	ROUTING -- RIP				
DNS	Allows you to configure RIP (Routing Information Protocol).				
Dynamic DNS	<input type="button" value="RIP"/>				
Network Tools	BROADBAND				
Routing					
Schedules					
Logout					



DSL-2740B //	SETUP	ADVANCED	MAINTENANCE	STATUS	HELP								
Advanced Wireless	ROUTING -- STATIC ROUTE				Helpful Hints... You can select what gateway to use, by interface or by specifying a gateway. More...								
Port Forwarding	Enter the destination network address, subnet mask, gateway AND/OR available WAN interface then click "Apply" to add the entry to the routing table.												
Port Triggering	A maximum 32 entries can be configured												
DMZ	ROUTING -- STATIC ROUTE												
Parental Control	<table border="1"> <thead> <tr> <th>Destination</th> <th>Subnet Mask</th> <th>Gateway</th> <th>Interface</th> </tr> </thead> <tbody> <tr> <td> </td> <td> </td> <td> </td> <td> </td> </tr> </tbody> </table>					Destination	Subnet Mask	Gateway	Interface				
Destination	Subnet Mask	Gateway	Interface										
Filtering Options	<input type="button" value="Add"/> <input type="button" value="Edit"/> <input type="button" value="Delete"/>												
Firewall Settings	STATIC ROUTE ADD/EDIT												
DNS	Destination Network Address : <input type="text"/> Subnet Mask : <input type="text"/> <input checked="" type="radio"/> Use Gateway IP Address : <input type="text"/> <input type="radio"/> Use Interface : <input type="text" value="pppoe_8_35_1/ppp_8_35_1"/>												
Dynamic DNS	<input type="button" value="Back"/> <input type="button" value="Apply"/> <input type="button" value="Cancel"/>												
Network Tools													
Routing													
Schedules													
Logout													



DSL-2740B //	SETUP	ADVANCED	MAINTENANCE	STATUS	HELP
Advanced Wireless	<p>ROUTING -- DEFAULT GATEWAY</p> <p>If Enable Automatic Assigned Default Gateway checkbox is selected, this router will accept the first received default gateway assignment from one of the PPPoA, PPPoE or MER/DHCP enabled PVC(s). If the checkbox is not selected, enter the static default gateway AND/OR a WAN interface. Click "Apply" button to save it.</p> <p>DEFAULT GATEWAY</p> <p><input checked="" type="checkbox"/> Enable Automatic Assigned Default Gateway</p> <p><input type="radio"/> Use Default Gateway IP Address : <input type="text"/></p> <p><input type="radio"/> Use Interface : <input type="text" value="pppoe_8_35_1/ppp_8_35_1"/></p> <p style="text-align: center;"> <input type="button" value="Apply"/> <input type="button" value="Cancel"/> </p>				<p>Helpful Hints...</p> <p>NOTE: If changing the Automatic Assigned Default Gateway from unselected to selected, You must reboot the router to get the automatic assigned default gateway.</p> <p>More...</p>
Port Forwarding					
Port Triggering					
DMZ					
Parental Control					
Filtering Options					
Firewall Settings					
DNS					
Dynamic DNS					
Network Tools					
Routing					
Schedules					
Logout					
BROADBAND					



DSL-2740B //	SETUP	ADVANCED	MAINTENANCE	STATUS	HELP															
Advanced Wireless	<p>ROUTING -- RIP</p> <p>To activate RIP for the device, select the 'Enabled' radio button for Global RIP Mode. To configure an individual interface, select the desired RIP version and operation, followed by placing a check in the 'Enabled' checkbox for the interface. Click the 'Apply' button to save the configuration, and to start or stop RIP based on the Global RIP mode selected.</p> <p>ROUTING -- RIP CONFIGURATION</p> <p>Global RIP Mode <input checked="" type="radio"/> Disabled <input type="radio"/> Enabled</p> <table border="1"> <thead> <tr> <th>Interface</th> <th>VPI/VCI</th> <th>Version</th> <th>Operation</th> <th>Enabled</th> </tr> </thead> <tbody> <tr> <td>br0</td> <td>(LAN)</td> <td>2</td> <td>Active</td> <td><input type="checkbox"/></td> </tr> <tr> <td>ppp_8_35_1</td> <td>8/35</td> <td>2</td> <td>Passive</td> <td><input type="checkbox"/></td> </tr> </tbody> </table> <p style="text-align: center;"> <input type="button" value="Apply"/> <input type="button" value="Cancel"/> </p>				Interface	VPI/VCI	Version	Operation	Enabled	br0	(LAN)	2	Active	<input type="checkbox"/>	ppp_8_35_1	8/35	2	Passive	<input type="checkbox"/>	<p>Helpful Hints...</p> <p>Enabling RIP provides a protocol that determines the best path to a target by estimating the distance in number of hops or intermediate routers.</p> <p>More...</p>
Interface	VPI/VCI	Version	Operation	Enabled																
br0	(LAN)	2	Active	<input type="checkbox"/>																
ppp_8_35_1	8/35	2	Passive	<input type="checkbox"/>																
Port Forwarding																				
Port Triggering																				
DMZ																				
Parental Control																				
Filtering Options																				
Firewall Settings																				
DNS																				
Dynamic DNS																				
Network Tools																				
Routing																				
Schedules																				
Logout																				
BROADBAND																				



DSL-2740B // SETUP ADVANCED MAINTENANCE STATUS HELP

Advanced Wireless
Port Forwarding
Port Triggering
DMZ
Parental Control
Filtering Options
Firewall Settings
DNS
Dynamic DNS
Network Tools
Routing
Schedules
Logout

SCHEDULE

Schedule allows you to create scheduling rules to be applied for your firewall.

Maximum of 20 entries

SCHEDULE RULE

	Rule Name	Sun	Mon	Tue	Wed	Thu	Fri	Sat	Start	Stop
<input type="checkbox"/>	pingin		X						14:40	14:43

Add Edit Delete

ADD SCHEDULE RULE

Name :

Day(s) : All Week Select Day(s)

Sun Mon Tue Wed Thu Fri Sat

All Day - 24 hrs :

Start Time : : (hour:minute, 24 hour time)

End Time : : (hour:minute, 24 hour time)

Apply Cancel

BROADBAND



DSL-2740B // SETUP ADVANCED MAINTENANCE STATUS HELP

System
Firmware Update
Access Controls
Diagnostics
System Log
Logout

SYSTEM -- REBOOT

Click the button below to reboot the router.

Reboot

SYSTEM -- BACKUP SETTINGS

Backup DSL Router configurations. You may save your router configurations to a file on your PC.
Note: Please always save configuration file first before viewing it.

Backup Settings

SYSTEM -- UPDATE SETTINGS

Update DSL Router settings. You may update your router settings using your saved files.

Settings File Name:

Update Settings

SYSTEM -- RESTORE DEFAULT SETTINGS

Restore DSL Router settings to the factory defaults.

Restore Default Settings

Helpful Hints...

This page allows you to reboot your router or save your router configuration to a file on your computer as a precaution in case you have to reset your router to factory default settings. You will be able to restore your router settings from a previously saved configuration file. There is also a function to allow you to reset your router to factory default settings. Resetting your router to factory default settings will erase your current configuration

More...

BROADBAND



DSL-2740B	SETUP	ADVANCED	MAINTENANCE	STATUS	HELP
System	<h3>FIRMWARE</h3> <p>Step 1: Obtain an updated firmware image file from your ISP.</p> <p>Step 2: Enter the path to the image file location in the box below or click the "Browse" button to locate the image file.</p> <p>Step 3: Click the "Update Firmware" button once to upload the new image file.</p> <p>NOTE: The update process takes about 2 minutes to complete, and your DSL Router will reboot. Please DO NOT power off your router before the update is complete.</p>				<p>Helpful Hints...</p> <p>Please Note: As firmware is often released to correct a specific issue, it is recommended that there is no need to update your firmware if you are not experiencing any technical concerns or difficulties in the operation of your product.</p> <p>More...</p>
Firmware Update	<h3>FIRMWARE UPDATE</h3> <p>Board ID: 96358GW Software Version: DI_DSL-2740B_3.06L.04V_2.18.A2pB023n.d20e Bootloader (CFE) Version:1.0.37-6.5 Wireless Driver Version: 4.150.10.5.cpe2.0</p> <p>Firmware File Name: <input type="text"/> <input type="button" value="Browse..."/></p> <p><input type="button" value="Update Firmware"/></p>				
Access Controls	BROADBAND				

DSL-2740B	SETUP	ADVANCED	MAINTENANCE	STATUS	HELP
System	<h3>ACCESS CONTROL -- ADMIN</h3> <p>Manage DSL Router user accounts.</p> <p><input type="button" value="Admin"/></p>				
Firmware Update	<h3>ACCESS CONTROL -- SERVICES</h3> <p>A Service Control List ("SCL") enables or disables services from being used.</p> <p><input type="button" value="Services"/></p>				
Access Controls	<h3>ACCESS CONTROL -- IP ADDRESS</h3> <p>Permits access to local management services.</p> <p><input type="button" value="IP Address"/></p>				
Diagnostics	BROADBAND				



DSL-2740B //	SETUP	ADVANCED	MAINTENANCE	STATUS	HELP
System	<h3>ACCESS CONTROL -- ADMIN</h3> <p>Access to your DSL Router is controlled through three user accounts: admin, support, and user.</p> <p>The user name "support" is used to allow an ISP technician to access your DSL Router for maintenance and to run diagnostics.</p> <p>The user name "user" can access the DSL Router, view configuration settings and statistics, as well as, update the router's firmware.</p> <p>Use the fields below to enter up to 16 characters and click "Apply" to change or create passwords. Note: Password cannot contain a space.</p>				<p>Helpful Hints...</p> <p>For security reasons, it is recommended that you change the password for the Admin and User accounts. Be sure to write down the new and passwords to avoid having to reset the router in case they are forgotten.</p> <p>More...</p>
Firmware Update	<h3>ADMINISTRATOR SETTINGS</h3> <p>Username: <input type="text" value="(Click to Select)"/></p> <p>Old Password: <input type="text" value="(Click to Select)"/></p> <p>New Password: <input type="text" value="admin"/></p> <p>Confirm Password: <input type="text" value="support"/></p>				
Access Controls	<p style="text-align: right;"> <input type="button" value="Apply"/> <input type="button" value="Cancel"/> </p>				
Diagnostics					
System Log					
Logout					
BROADBAND					



DSL-2740B //	SETUP	ADVANCED	MAINTENANCE	STATUS	HELP																								
System	<h3>ACCESS CONTROL -- SERVICES</h3> <p>A Service Control List ("SCL") enables or disables services from being used.</p>				<p>Helpful Hints...</p> <p>Remote Management by default should be disabled. However if you wish to login and manage your Router from another Internet device than you can enable the router to accept such commands from the Internet port. This option may be useful if your network administrator is not onsite or Technical Support request such access.</p> <p>More...</p>																								
Firmware Update	<h3>ACCESS CONTROL -- SERVICES</h3> <table border="1"> <thead> <tr> <th>Service</th> <th>LAN</th> <th>WAN</th> </tr> </thead> <tbody> <tr> <td>FTP</td> <td><input type="checkbox"/> Enabled</td> <td><input type="checkbox"/> Enabled</td> </tr> <tr> <td>HTTP</td> <td><input checked="" type="checkbox"/> Enabled</td> <td><input checked="" type="checkbox"/> Enabled</td> </tr> <tr> <td>ICMP</td> <td><input checked="" type="checkbox"/> Enabled</td> <td><input checked="" type="checkbox"/> Enabled</td> </tr> <tr> <td>SNMP</td> <td><input checked="" type="checkbox"/> Enabled</td> <td><input checked="" type="checkbox"/> Enabled</td> </tr> <tr> <td>SSH</td> <td><input type="checkbox"/> Enabled</td> <td><input checked="" type="checkbox"/> Enabled</td> </tr> <tr> <td>TELNET</td> <td><input checked="" type="checkbox"/> Enabled</td> <td><input checked="" type="checkbox"/> Enabled</td> </tr> <tr> <td>TFTP</td> <td><input checked="" type="checkbox"/> Enabled</td> <td><input type="checkbox"/> Enabled</td> </tr> </tbody> </table>					Service	LAN	WAN	FTP	<input type="checkbox"/> Enabled	<input type="checkbox"/> Enabled	HTTP	<input checked="" type="checkbox"/> Enabled	<input checked="" type="checkbox"/> Enabled	ICMP	<input checked="" type="checkbox"/> Enabled	<input checked="" type="checkbox"/> Enabled	SNMP	<input checked="" type="checkbox"/> Enabled	<input checked="" type="checkbox"/> Enabled	SSH	<input type="checkbox"/> Enabled	<input checked="" type="checkbox"/> Enabled	TELNET	<input checked="" type="checkbox"/> Enabled	<input checked="" type="checkbox"/> Enabled	TFTP	<input checked="" type="checkbox"/> Enabled	<input type="checkbox"/> Enabled
Service	LAN	WAN																											
FTP	<input type="checkbox"/> Enabled	<input type="checkbox"/> Enabled																											
HTTP	<input checked="" type="checkbox"/> Enabled	<input checked="" type="checkbox"/> Enabled																											
ICMP	<input checked="" type="checkbox"/> Enabled	<input checked="" type="checkbox"/> Enabled																											
SNMP	<input checked="" type="checkbox"/> Enabled	<input checked="" type="checkbox"/> Enabled																											
SSH	<input type="checkbox"/> Enabled	<input checked="" type="checkbox"/> Enabled																											
TELNET	<input checked="" type="checkbox"/> Enabled	<input checked="" type="checkbox"/> Enabled																											
TFTP	<input checked="" type="checkbox"/> Enabled	<input type="checkbox"/> Enabled																											
Access Controls	<p style="text-align: right;"> <input type="button" value="Apply"/> <input type="button" value="Cancel"/> </p>																												
Diagnostics																													
System Log																													
Logout																													
BROADBAND																													



DSL-2740B //	SETUP	ADVANCED	MAINTENANCE	STATUS	HELP
System	<h3>ACCESS CONTROL -- IP ADDRESS</h3> <p>The IP Address Access Control mode, if enabled, permits access to local management services from IP addresses contained in the Access Control List. If the Access Control mode is disabled, the system will not validate IP addresses for incoming packets. The services are the system applications listed in the Service Control List.</p> <p>Enter the IP address of the management station permitted to access the local management services, and click 'Apply.'</p>				Helpful Hints... You can restrict users who can access the local management using IP address. Note: Be sure to add your add your IP Address in the list before you enable the service. More...
Firmware Update	<h3>ACCESS CONTROL -- IP ADDRESS</h3> <p>Access Control Mode <input checked="" type="radio"/> Disabled <input type="radio"/> Enabled</p> <p><input type="text" value="IP Address"/> <input type="button" value="Select"/></p> <p><input type="button" value="Add"/> <input type="button" value="Edit"/> <input type="button" value="Delete"/></p>				
Access Controls	<h3>IP ADDRESS</h3> <p>IP Address: <input type="text"/></p> <p><input type="button" value="Add"/> <input type="button" value="Cancel"/></p>				
Diagnostics					
System Log					
Logout					
BROADBAND					



DSL-2740B //	SETUP	ADVANCED	MAINTENANCE	STATUS	HELP																					
System	<h3>DLINK PVC DIAGNOSTICS</h3> <p>Diagnostics</p> <p>Your modem is capable of testing your DSL connection. The individual tests are listed below. If a test displays a fail status, click "Rerun Diagnostic Tests" at the bottom of this page to make sure the fail status is consistent. If the test continues to fail, click "Help" and follow the troubleshooting procedures.</p> <p>Virtual Circuit : <input type="text" value="PPPoE/8/35/1"/> <input type="button" value="Rerun Diagnostic Tests"/></p>				Helpful Hints... The tests on this page can be used to verify whether or not your router is working correctly. If you have rerun the tests and consulted the help file and you are still experiencing difficulties, please contact D-link or visit our support website at support.dlink.co.uk More...																					
Firmware Update	<h3>TEST THE CONNECTION TO YOUR LOCAL NETWORK</h3> <table border="1"> <tr><td>Test your ENET(1-4) Connection:</td><td>PASS</td><td></td></tr> <tr><td>Test your Wireless Connection:</td><td>PASS</td><td>Help</td></tr> <tr><td>Test ADSL Synchronization:</td><td>FAIL</td><td>Help</td></tr> <tr><td>Test ATM OAM5 segment ping:</td><td>FAIL</td><td></td></tr> <tr><td>Test ATM OAM5 end-to-end ping:</td><td>FAIL</td><td></td></tr> <tr><td>Test ATM OAM4 segment ping:</td><td>FAIL</td><td></td></tr> <tr><td>Test ATM OAM4 end-to-end ping:</td><td>FAIL</td><td></td></tr> </table>				Test your ENET(1-4) Connection:	PASS		Test your Wireless Connection:	PASS	Help	Test ADSL Synchronization:	FAIL	Help	Test ATM OAM5 segment ping:	FAIL		Test ATM OAM5 end-to-end ping:	FAIL		Test ATM OAM4 segment ping:	FAIL		Test ATM OAM4 end-to-end ping:	FAIL		
Test your ENET(1-4) Connection:	PASS																									
Test your Wireless Connection:	PASS	Help																								
Test ADSL Synchronization:	FAIL	Help																								
Test ATM OAM5 segment ping:	FAIL																									
Test ATM OAM5 end-to-end ping:	FAIL																									
Test ATM OAM4 segment ping:	FAIL																									
Test ATM OAM4 end-to-end ping:	FAIL																									
Access Controls	<h3>TEST THE CONNECTION TO YOUR INTERNET SERVICE PROVIDER</h3> <table border="1"> <tr><td>Ping default gateway:</td><td>FAIL</td><td>Help</td></tr> <tr><td>Ping primary Domain Name Server:</td><td>PASS</td><td>Help</td></tr> </table>				Ping default gateway:	FAIL	Help	Ping primary Domain Name Server:	PASS	Help																
Ping default gateway:	FAIL	Help																								
Ping primary Domain Name Server:	PASS	Help																								
Diagnostics																										
System Log																										
Logout																										
BROADBAND																										



DSL-2740B //	SETUP	ADVANCED	MAINTENANCE	STATUS	HELP
System	SYSTEM LOG				
Firmware Update	The System Log dialog allows you to view the System Log and configure the System Log options.				
Access Controls	Click "View System Log" to view the System Log.				
Diagnostics	Click "Configure System Log" to configure the System Log options.				
System Log	<input type="button" value="View System Log"/> <input type="button" value="Configure System Log"/>				
Logout					
BROADBAND					



DSL-2740B //	SETUP	ADVANCED	MAINTENANCE	STATUS	HELP
System	SYSTEM LOG				Helpful Hints...
Firmware Update	If the log mode is enabled, the system will begin to log all the selected events. For the Log Level, all events above or equal to the selected level will be logged. For the Display Level, all logged events above or equal to the selected level will be displayed. If the selected mode is 'Remote' or 'Both,' events will be sent to the specified IP address and UDP port of the remote syslog server. If the selected mode is 'Local' or 'Both,' events will be recorded in the local memory.				You can set both the Log Level and Display Level to match your needs, with Emergency as the highest level and Debugging as the lowest.
Access Controls	Select the desired values and click 'Apply' to configure the system log options.				More...
Diagnostics	SYSTEM LOG -- CONFIGURATION				
System Log	Log: <input type="radio"/> Disable <input checked="" type="radio"/> Enable Log Level: <input type="text" value="Debugging"/> Display Level: <input type="text" value="Debugging"/> Mode: <input type="text" value="Local"/> <input type="text" value="Local"/> <input type="text" value="Remote"/> <input type="text" value="Both"/>				
Logout	<input type="button" value="Apply"/> <input type="button" value="Cancel"/>				
BROADBAND					



DSL-2740B //	SETUP	ADVANCED	MAINTENANCE	STATUS	HELP
---------------------	--------------	-----------------	--------------------	---------------	-------------

- Device Info
- Wireless Clients
- DHCP Clients
- Logs
- Statistics
- Route Info
- Logout

LOGS

This page allows you to view system logs.

SYSTEM LOG

Date/Time	Facility	Severity	Message
Jan 1 00:15:27	user	info	kernel: br0: port 4(wds0.3) entering listening state
Jan 1 00:15:27	user	info	kernel: br0: port 4(wds0.3) entering learning state
Jan 1 00:15:27	user	info	kernel: br0: topology change detected, propagating
Jan 1 00:15:27	user	info	kernel: br0: port 4(wds0.3) entering forwarding state
Jan 1 00:15:47	user	info	kernel: device wds0.4 entered promiscuous mode
Jan 1 00:15:47	user	info	kernel: br0: port 7(wds0.4) entering listening state
Jan 1 00:15:47	user	info	kernel: br0: port 7(wds0.4) entering learning state
Jan 1 00:15:47	user	info	kernel: br0: topology change detected, propagating
Jan 1 00:15:47	user	info	kernel: br0: port 7(wds0.4) entering forwarding state
Jan 1 00:16:21	user	info	kernel: device wds0.6 entered promiscuous mode
Jan 1 00:16:21	user	info	kernel: br0: port 9(wds0.6) entering listening state
Jan 1 00:16:21	user	info	kernel: br0: port 9(wds0.6) entering learning state
Jan 1 00:16:21	user	info	kernel: br0: topology change detected, propagating
Jan 1 00:16:21	user	info	kernel: br0: port 9(wds0.6) entering forwarding state
Jan 1 00:16:23	user	info	kernel: device wds0.7 entered promiscuous mode

Helpful Hints...

Check the log frequently to detect unauthorized network usage.

[More...](#)



DSL-2740B //	SETUP	ADVANCED	MAINTENANCE	STATUS	HELP																																																				
Device Info Wireless Clients DHCP Clients Logs Statistics Route Info Logout	<div style="background-color: #f4a460; padding: 5px;">DEVICE INFORMATION</div> <p>This information reflects the current status of your DSL connection.</p> <div style="background-color: #333; color: white; padding: 5px;">SYSTEM INFO</div> <table border="1" style="width: 100%; border-collapse: collapse;"> <tr> <td style="width: 40%;">Model Name:</td> <td>DSL-2740B</td> </tr> <tr> <td>Time and Date:</td> <td>1.01.2000,00:39:02 Sat</td> </tr> <tr> <td>Firmware Version:</td> <td>DI_DSL-2740B_3.06L.04V_2.18.A2pB023n.d20e</td> </tr> </table> <div style="background-color: #333; color: white; padding: 5px;">INTERNET INFO</div> <p>Internet Connection: <input type="text" value="pppoe_8_35_1"/></p> <table border="1" style="width: 100%; border-collapse: collapse;"> <tr> <td style="width: 40%;">Internet Connection Status:</td> <td>ADSL Link Down</td> </tr> <tr> <td>Internet Connection Up Time :</td> <td>N/A</td> </tr> <tr> <td>Default Gateway:</td> <td></td> </tr> <tr> <td>Preferred DNS Server:</td> <td>N/A</td> </tr> <tr> <td>Alternate DNS Server:</td> <td>N/A</td> </tr> <tr> <td>Downstream Line Rate (Kbps):</td> <td></td> </tr> <tr> <td>Upstream Line Rate (Kbps):</td> <td></td> </tr> </table> <table border="1" style="width: 100%; border-collapse: collapse; margin-top: 10px;"> <thead> <tr> <th>VPI/VCI</th> <th>Service Name</th> <th>Protocol</th> <th>IGMP</th> <th>QoS</th> <th>Status</th> <th>IP Address</th> </tr> </thead> <tbody> <tr> <td>8/35</td> <td>pppoe_8_35_1</td> <td>PPPoE</td> <td>Disable</td> <td>Disable</td> <td>Enable</td> <td></td> </tr> </tbody> </table> <div style="background-color: #333; color: white; padding: 5px;">WIRELESS INFO</div> <table border="1" style="width: 100%; border-collapse: collapse;"> <tr> <td style="width: 40%;">MAC Address :</td> <td>00:19:5B:42:F6:E4</td> </tr> <tr> <td>Status:</td> <td>Enabled</td> </tr> <tr> <td>Network Name (SSID):</td> <td>DSL2740B</td> </tr> <tr> <td>Visibility:</td> <td>Visible</td> </tr> <tr> <td>Security Mode:</td> <td>WPA-Personal</td> </tr> </table> <div style="background-color: #333; color: white; padding: 5px;">LOCAL NETWORK INFO</div> <table border="1" style="width: 100%; border-collapse: collapse;"> <tr> <td style="width: 40%;">MAC Address :</td> <td>00:19:5B:42:EA:47</td> </tr> <tr> <td>IP Address:</td> <td>192.168.1.1</td> </tr> <tr> <td>Subnet Mask:</td> <td>255.255.255.0</td> </tr> <tr> <td>DHCP Server:</td> <td>Enabled</td> </tr> </table> <div style="text-align: center; margin-top: 20px;"> <input type="button" value="Refresh"/> </div>				Model Name:	DSL-2740B	Time and Date:	1.01.2000,00:39:02 Sat	Firmware Version:	DI_DSL-2740B_3.06L.04V_2.18.A2pB023n.d20e	Internet Connection Status:	ADSL Link Down	Internet Connection Up Time :	N/A	Default Gateway:		Preferred DNS Server:	N/A	Alternate DNS Server:	N/A	Downstream Line Rate (Kbps):		Upstream Line Rate (Kbps):		VPI/VCI	Service Name	Protocol	IGMP	QoS	Status	IP Address	8/35	pppoe_8_35_1	PPPoE	Disable	Disable	Enable		MAC Address :	00:19:5B:42:F6:E4	Status:	Enabled	Network Name (SSID):	DSL2740B	Visibility:	Visible	Security Mode:	WPA-Personal	MAC Address :	00:19:5B:42:EA:47	IP Address:	192.168.1.1	Subnet Mask:	255.255.255.0	DHCP Server:	Enabled	<div style="background-color: #333; color: white; padding: 5px;">Helpful Hints...</div> <p>All of your Modem's Information, WLAN, WAN and LAN status and details are shown here.</p> <p>Details include firmware version, Modem MAC address, Default gateway, WLAN SSID, WLAN security type, Modem IP and etc.</p> <p>More...</p>
Model Name:	DSL-2740B																																																								
Time and Date:	1.01.2000,00:39:02 Sat																																																								
Firmware Version:	DI_DSL-2740B_3.06L.04V_2.18.A2pB023n.d20e																																																								
Internet Connection Status:	ADSL Link Down																																																								
Internet Connection Up Time :	N/A																																																								
Default Gateway:																																																									
Preferred DNS Server:	N/A																																																								
Alternate DNS Server:	N/A																																																								
Downstream Line Rate (Kbps):																																																									
Upstream Line Rate (Kbps):																																																									
VPI/VCI	Service Name	Protocol	IGMP	QoS	Status	IP Address																																																			
8/35	pppoe_8_35_1	PPPoE	Disable	Disable	Enable																																																				
MAC Address :	00:19:5B:42:F6:E4																																																								
Status:	Enabled																																																								
Network Name (SSID):	DSL2740B																																																								
Visibility:	Visible																																																								
Security Mode:	WPA-Personal																																																								
MAC Address :	00:19:5B:42:EA:47																																																								
IP Address:	192.168.1.1																																																								
Subnet Mask:	255.255.255.0																																																								
DHCP Server:	Enabled																																																								



DSL-2740B //	SETUP	ADVANCED	MAINTENANCE	STATUS	HELP																				
Device Info	<h3>WIRELESS STATION INFO</h3> <p>This page shows authenticated wireless stations and their status.</p>				Helpful Hints... This is a list of all wireless clients that are currently connected to your wireless router. More...																				
Wireless Clients	<h3>WIRELESS -- AUTHENTICATED STATIONS</h3> <table border="1"> <thead> <tr> <th>BSSID</th> <th>Associated</th> <th>Authorized</th> <th>SSID</th> <th>Interface</th> </tr> </thead> <tbody> <tr> <td>00:1F:3B:61:84:5B</td> <td>Yes</td> <td>Yes</td> <td>DSL2740B</td> <td>wl0</td> </tr> <tr> <td>00:1F:3B:30:F5:73</td> <td>Yes</td> <td>Yes</td> <td>DSL2740B</td> <td>wl0</td> </tr> <tr> <td>00:1C:F0:A8:F6:08</td> <td>Yes</td> <td>Yes</td> <td>DSL2740B</td> <td>wl0</td> </tr> </tbody> </table>					BSSID	Associated	Authorized	SSID	Interface	00:1F:3B:61:84:5B	Yes	Yes	DSL2740B	wl0	00:1F:3B:30:F5:73	Yes	Yes	DSL2740B	wl0	00:1C:F0:A8:F6:08	Yes	Yes	DSL2740B	wl0
BSSID	Associated	Authorized	SSID	Interface																					
00:1F:3B:61:84:5B	Yes	Yes	DSL2740B	wl0																					
00:1F:3B:30:F5:73	Yes	Yes	DSL2740B	wl0																					
00:1C:F0:A8:F6:08	Yes	Yes	DSL2740B	wl0																					
DHCP Clients	<input type="button" value="Refresh"/>																								
Logs																									
Statistics																									
Route Info																									
Logout																									
BROADBAND																									

Product Page: DSL-2740B	Site Map	Firmware Version: 2.18															
D-Link																	
DSL-2740B //	SETUP	ADVANCED	MAINTENANCE	STATUS	HELP												
Device Info	<h3>DHCP CLIENTS</h3> <p>This information reflects the current DHCP client of your modem.</p>				Helpful Hints... This is a list of all LAN clients that are assigned IP addresses by DHCP service and currently connected to your router. More...												
Wireless Clients	<h3>DHCP LEASES</h3> <table border="1"> <thead> <tr> <th>Hostname</th> <th>MAC Address</th> <th>IP Address</th> <th>Expires In</th> </tr> </thead> <tbody> <tr> <td>gti-ea1f099f408</td> <td>00:1F:3B:30:F5:73</td> <td>192.168.1.2</td> <td>23 hours, 37 minutes, 17 seconds</td> </tr> <tr> <td>d-ffea82cb57174</td> <td>00:1C:F0:A8:F6:08</td> <td>192.168.1.3</td> <td>23 hours, 38 minutes, 53 seconds</td> </tr> </tbody> </table>					Hostname	MAC Address	IP Address	Expires In	gti-ea1f099f408	00:1F:3B:30:F5:73	192.168.1.2	23 hours, 37 minutes, 17 seconds	d-ffea82cb57174	00:1C:F0:A8:F6:08	192.168.1.3	23 hours, 38 minutes, 53 seconds
Hostname	MAC Address	IP Address	Expires In														
gti-ea1f099f408	00:1F:3B:30:F5:73	192.168.1.2	23 hours, 37 minutes, 17 seconds														
d-ffea82cb57174	00:1C:F0:A8:F6:08	192.168.1.3	23 hours, 38 minutes, 53 seconds														
DHCP Clients	<input type="button" value="Refresh"/>																
Logs																	
Statistics																	
Route Info																	
Logout																	
BROADBAND																	

Device Info

Wireless Clients

DHCP Clients

Logs

Statistics

Route Info

Logout

LOGS

This page allows you to view system logs.

SYSTEM LOG

Date/Time	Facility	Severity	Message
Jan 1 00:15:27	user	info	kernel: br0: port 4(wds0.3) entering listening state
Jan 1 00:15:27	user	info	kernel: br0: port 4(wds0.3) entering learning state
Jan 1 00:15:27	user	info	kernel: br0: topology change detected, propagating
Jan 1 00:15:27	user	info	kernel: br0: port 4(wds0.3) entering forwarding state
Jan 1 00:15:47	user	info	kernel: device wds0.4 entered promiscuous mode
Jan 1 00:15:47	user	info	kernel: br0: port 7(wds0.4) entering listening state
Jan 1 00:15:47	user	info	kernel: br0: port 7(wds0.4) entering learning state
Jan 1 00:15:47	user	info	kernel: br0: topology change detected, propagating
Jan 1 00:15:47	user	info	kernel: br0: port 7(wds0.4) entering forwarding state
Jan 1 00:16:21	user	info	kernel: device wds0.6 entered promiscuous mode
Jan 1 00:16:21	user	info	kernel: br0: port 9(wds0.6) entering listening state
Jan 1 00:16:21	user	info	kernel: br0: port 9(wds0.6) entering learning state
Jan 1 00:16:21	user	info	kernel: br0: topology change detected, propagating
Jan 1 00:16:21	user	info	kernel: br0: port 9(wds0.6) entering forwarding state
Jan 1 00:16:23	user	info	kernel: device wds0.7 entered promiscuous mode
Jan 1 00:16:23	user	info	kernel: br0: port 10(wds0.7) entering listening state
Jan 1 00:16:23	user	info	kernel: br0: port 10(wds0.7) entering learning state
Jan 1 00:16:23	user	info	kernel: br0: topology change detected, propagating
Jan 1 00:16:23	user	info	kernel: br0: port 10(wds0.7) entering forwarding state

Helpful Hints...

Check the log frequently to detect unauthorized network usage.

[More...](#)



DSL-2740B //	SETUP	ADVANCED	MAINTENANCE	STATUS	HELP
---------------------	--------------	-----------------	--------------------	---------------	-------------

Device Info

Wireless Clients

DHCP Clients

Logs

Statistics

Route Info

Logout

ROUTING

Flags: U - up, ! - reject, G - gateway, H - host, R - reinstate D - dynamic (redirect), M - modified (redirect).

DEVICE INFO -- ROUTE

Destination	Gateway	Subnet Mask	Flag	Metric	Service	Interface
192.168.1.0	0.0.0.0	255.255.255.0	U	0		br0

Helpful Hints...

This is a list of the ADSL router's routing table.

[More...](#)

BROADBAND



DSL-2740B //	SETUP	ADVANCED	MAINTENANCE	STATUS	HELP
---------------------	--------------	-----------------	--------------------	---------------	-------------

Menu

Setup

Advanced

Maintenance

Status

HELP MENU

- [Setup](#)
- [Advanced](#)
- [Maintenance](#)
- [Status](#)

SETUP HELP

- [Internet](#)
- [Wireless](#)
- [Local Network](#)
- [Time and Date](#)

ADVANCED HELP

- [Advanced Wireless](#)
- [Port Forwarding](#)
- [Port Triggering](#)
- [DMZ](#)
- [Parental Control](#)
- [Filtering Options](#)
- [Firewall](#)
- [DNS](#)
- [DDNS](#)
- [Network Tools](#)
- [Routing](#)

MAINTENANCE HELP

- [System](#)
- [Firmware Update](#)
- [Access Control](#)
- [Diagnostics](#)
- [System Log](#)