

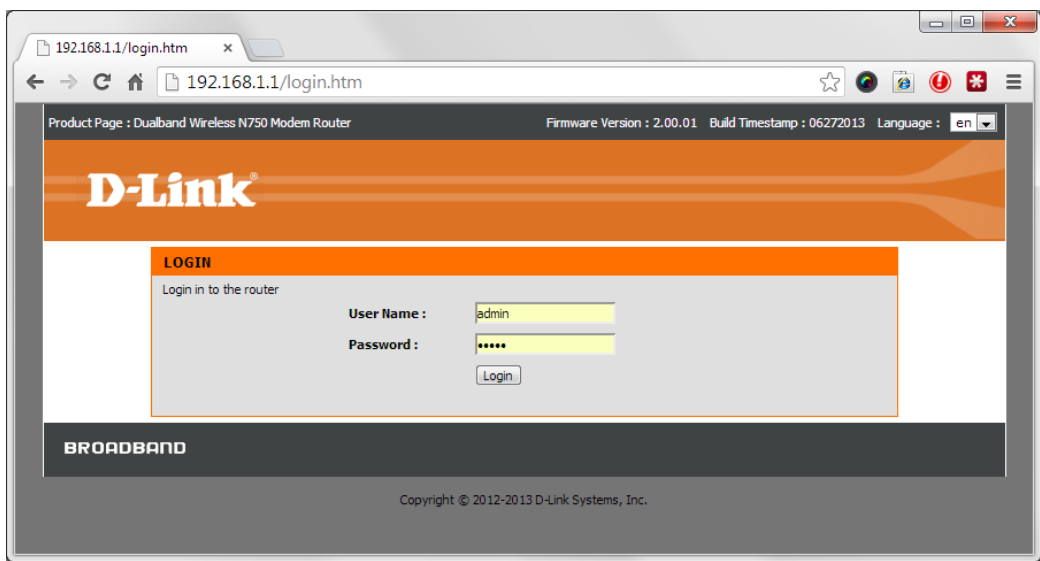
How do I share files on a USB drive connected to my modem

This document details how to set USB drive sharing in your modem/router firewall

Connect your USB drive to the router's USB port. Some USB HDD enclosures require to be powered by an additional power adapter supplied with the enclosure – please connect the power adapter if required.

The drive needs to be formatted with NTFS or FAT32 file system.

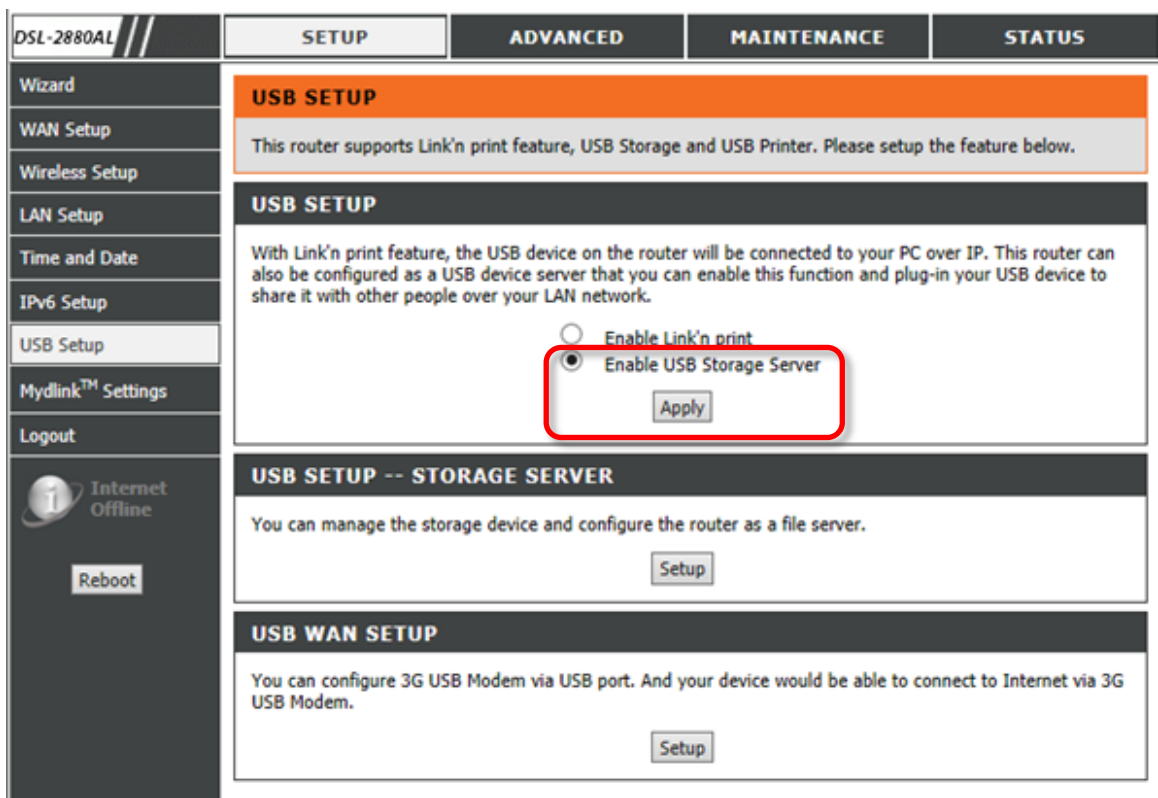
Step 1. Open your Internet Browser and in the address field type in <http://192.168.1.1>.



Step 2. When prompted type in the Username and Password then click on the “Log In” button. If you have not changed the password for the modem administration, the factory settings are:

Username: admin
Password: admin

Step 3. After logging in you will be presented with the modem's configuration pages. Click on [SETUP] > [USB SETUP]. Select the “Enable USB Storage Server” and click on APPLY:



Step 4. Under USB SETUP – STORAGE SERVER click on [Setup]

The screenshot shows the router's configuration interface. The top navigation bar includes 'DSL-2880AL', 'SETUP', 'ADVANCED', 'MAINTENANCE', and 'STATUS'. The left sidebar lists various setup options: Wizard, WAN Setup, Wireless Setup, LAN Setup, Time and Date, IPv6 Setup, USB Setup (highlighted), Mylink™ Settings, and Logout. Below the sidebar, there are 'Internet Offline' and 'Reboot' buttons.

The main content area is titled 'USB SETUP' and contains the following text: 'This router supports Link'n print feature, USB Storage and USB Printer. Please setup the feature below.' Below this, there is a section titled 'USB SETUP' with the text: 'With Link'n print feature, the USB device on the router will be connected to your PC over IP. This router can also be configured as a USB device server that you can enable this function and plug-in your USB device to share it with other people over your LAN network.' There are two radio button options: 'Enable Link'n print' (unselected) and 'Enable USB Storage Server' (selected). An 'Apply' button is located below these options.

Below the 'USB SETUP' section is a section titled 'USB SETUP -- STORAGE SERVER' with the text: 'You can manage the storage device and configure the router as a file server.' A 'Setup' button is highlighted with a red box.

Make sure the “Enable Samba File Server” option is ticked.

In the “Group Name” field type the name of your LAN Workgroup.

The screenshot shows two sections of the router's configuration interface.

The top section is titled 'USB DEVICE STATUS' and contains a warning: 'Warning! If you would like to unplug the USB storage, please click "Safely Remove Device" button in the "Current USB Device Status" table to make sure all un-saved data have been written into disk completely. Directly unplugging device may cause your USB storage crash.' Below the warning is a table with the following data:

Connected Device	Partitions	Size	Service Status
USB DISK 3.0	1	14.76 GB	File Server(anonymous), FTP(anonymous), Web-FTP

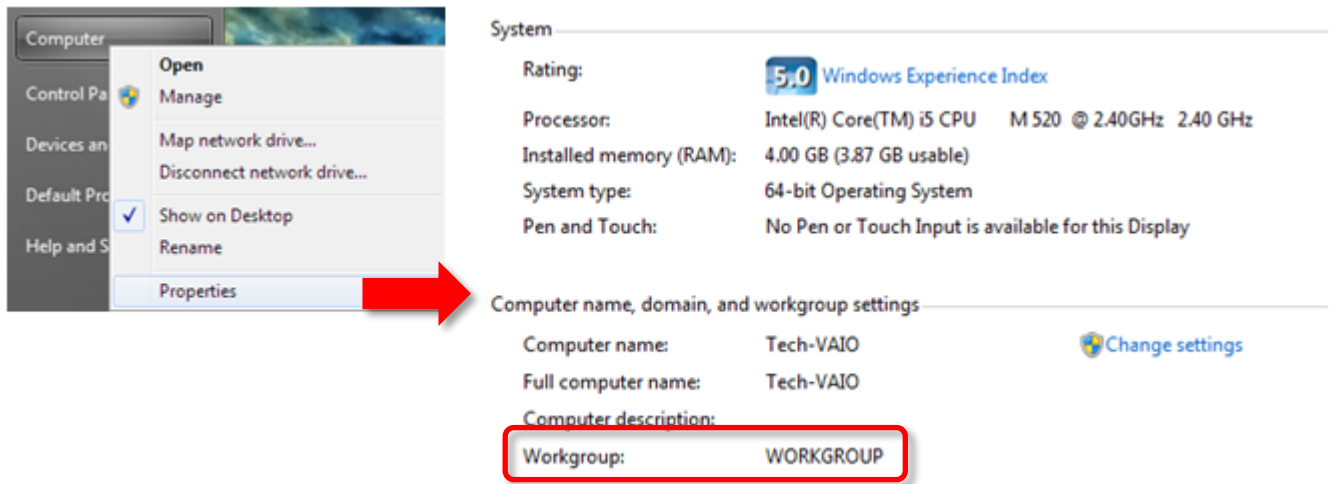
Below the table are two buttons: 'Status Refresh' and 'Safely Remove Device'.

The bottom section is titled 'SAMBA FILE SERVER' and contains the following configuration options:

- Enable Samba File Server :
- Server Name : DSL-2880AL
- Server Description : File Server
- Group Name : WORKGROUP
- Remote Access :

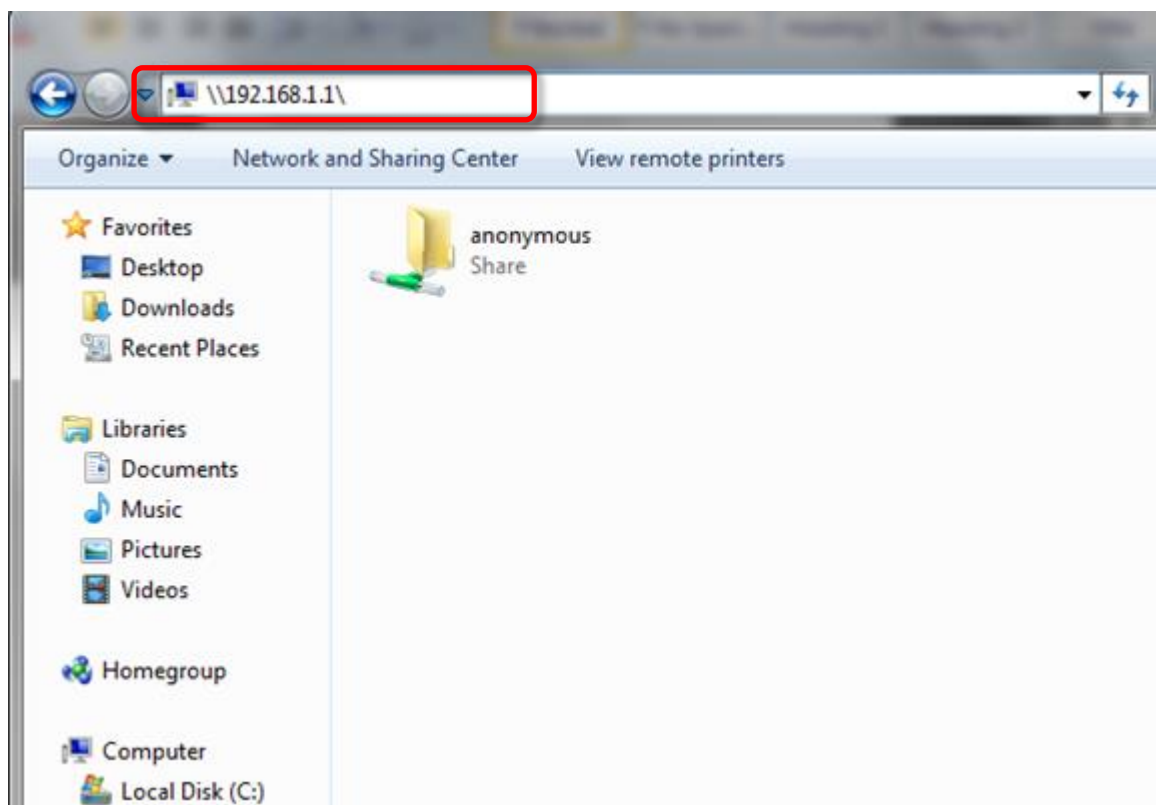
At the bottom of the section are 'Apply' and 'Cancel' buttons.

You can check your LAN Workgroup name by Right-Clicking on “My Computer” in Windows and selecting “Properties”.



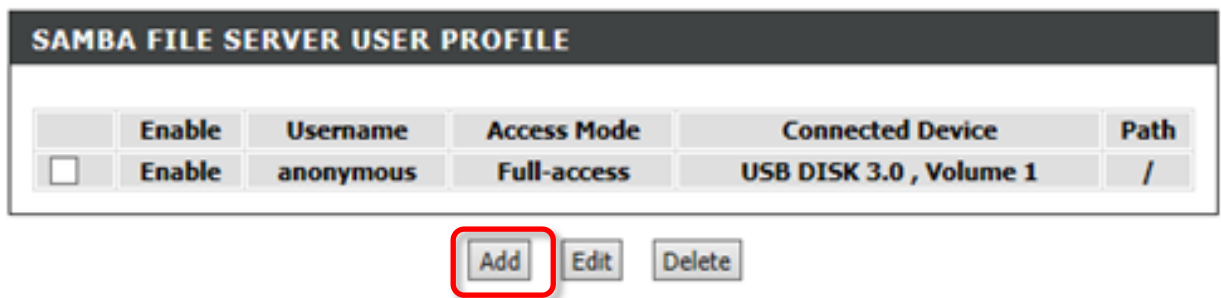
Step 5. You can access the content of your USB drive by opening Windows Explorer and typing in the address of your router:

\\192.168.1.1



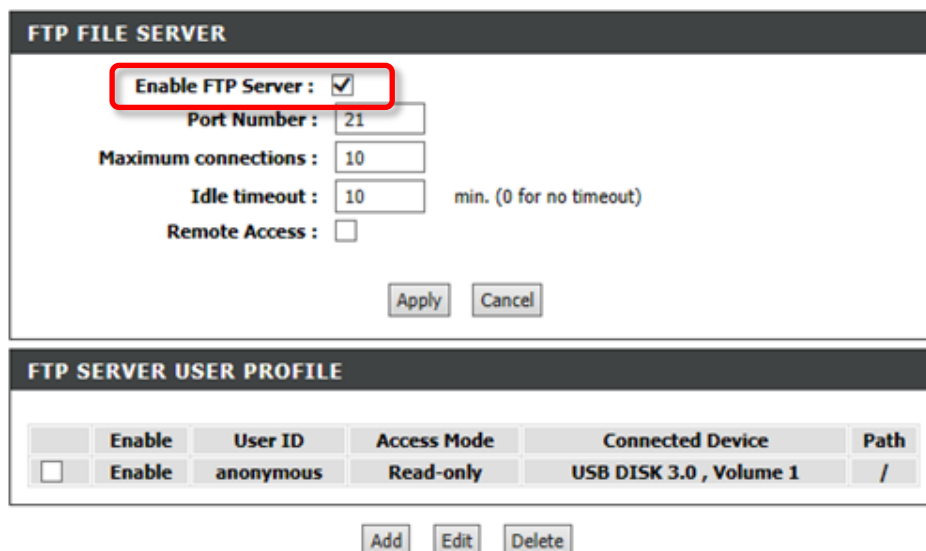
Step 6. (Optional Step)

The default user access to the drive is set as “Anonymous” and does not require password. If you wish to set password protection you can add users and passwords under SAMBA FILE SERVER USER PROFILE:



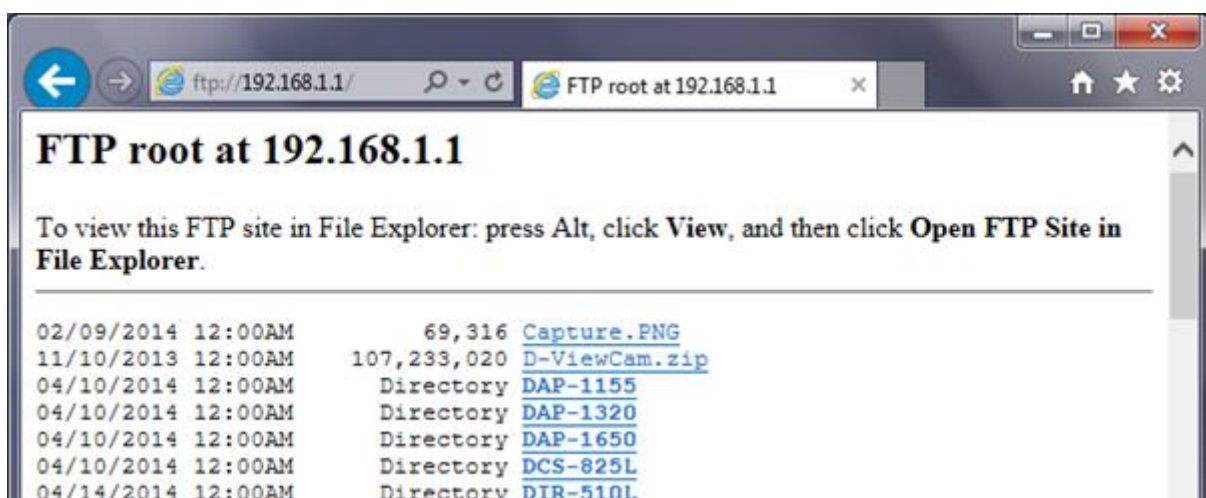
Step 7. (Optional Step)

If you want to enable access to the files using FTP protocol tick the “Enable FTP Server” option:



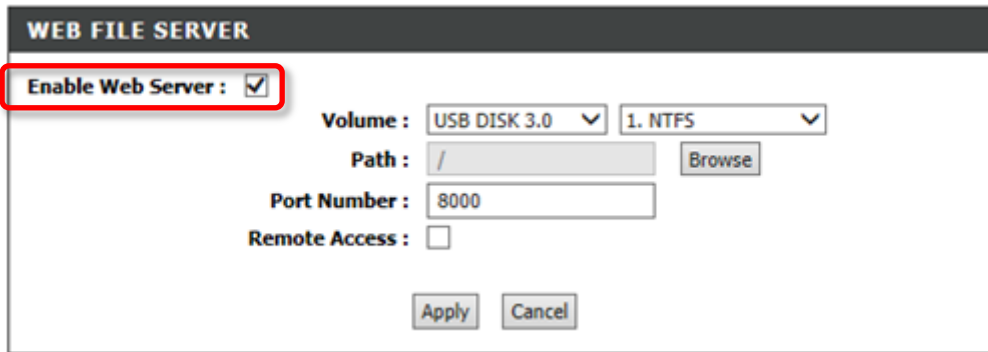
To access files via FTP open your Internet Browser and type the address of your router:

ftp://192.168.1.1



Step 8. (Optional Step)

If you want to enable access to the files using HTTP protocol tick the “Enable Web Server” option:



WEB FILE SERVER

Enable Web Server :

Volume : USB DISK 3.0 | 1. NTFS

Path : / | Browse

Port Number : 8000

Remote Access :

Apply | Cancel

Note the port number (8000 in our example).

To access files via HTTP open your Internet Browser and type the address of your router followed by colon and the port number:

http://192.168.1.1:8000

