

High-Speed Internet Connection

DSL-302G



**150X Faster
Than Analog
Modems!**

**Free
Telstra Approved
Microfilter
Included**

- Plug & Play USB/
Fast Ethernet
Connectivity
- Supports All Major
ISPs
- Secure NAT/DHCP
Functions
- 3 Year Warranty

ADSL Combo Modem

D-Link, a worldwide leader in networking products, introduces the new DSL-302G, a newly designed ADSL modem that provides both USB and Ethernet connectivity at an affordable price.

The DSL-302G uses ADSL (Asymmetric Digital Subscriber Line) technology to bring your Internet Speeds up to 150 times faster than a 56K analog modem over a standard phone line.

Two computers can simultaneously connect to the DSL-302G through its USB and Ethernet port to share its high-speed Internet connection. You can connect to its Ethernet port regardless of the operating system you are using, or connect to its USB port to allow easy installation to a USB equipped computer running Windows 98SE, Me, 2K, XP, or Mac OS 9 and OS X.

The Modem comes with a simple configuration tool and a web-based Graphical User Interface (GUI) that allows

you to easily modify settings to connect to an Internet Service Provider (ISP). Connection speed, traffic statistics and other detailed information are displayed.

The DSL-302G supports Static IP, Dynamic IP, as well as PPPoE/PPPoA and Bridge connections terminating on the local PCs. The DSL-302G supports all applications such as video games and VPN connections with no configuration needed on the modem.

The DSL-302G is simple to upgrade to any new releases of firmware, making it future proof for both end-users and service providers.

The DSL-302G is a great all-round solution that will satisfy your needs, whether you're a home user who requires high-speed Internet access for faster web surfing or quicker downloads, or small business that depends on the Internet to conduct your daily business.



ADSL Combo Modem

Software Features

Data Rates

- G.dmt, downstream:
up to 8 Mbps
- G.dmt, upstream:
up to 832 Kbps
- G.lite, downstream:
up to 1.5 Mbps
- G.lite, upstream:
up to 512 Kbps

Protocol Support

- Bridged Ethernet over ATM
- PPP over ATM
- PPP over Ethernet

Management

- Built-in SNMP-based MIBs
- TFTP and HTTP firmware upgrade
- Telnet support

Configuration

- Web-based Configuration Tool

Hardware Features

LED Indicators

- Power
- Status
- ADSL Link/ Act
- Ethernet Link/ Act
- USB Link/ Act

Interface

- ADSL: RJ-11 connector (to phone line)
- USB 1.1
- RJ45 - 10/100 Ethernet

Power Supply

- Output: 9VAC 1.0A
- Input: 240VAC 50Hz
(through external AC power adapter)

Dimensions

- 142 x 117 x 31 mm

Weight

- 360 gms

Warranty Details

- 3 Years from date of purchase
(return to D-Link Head Office)

Compliance Standards

ADSL Standards

- ANSI T1.413 issue 2
(Full rate DMT analog POTS)
- ITU G.992.1(G.dmt) Annex A
- ITU G.992.2(G.lite) Annex A
- ITU G.994.1(G.hs)
- IP1149 Issue 5
- NZ Telepermit

Signaling

- ATM signaling:
UNI 3.0, 3.1 and 4.0
- Precise ATM traffic shaping

Package Content

DSL-302G Modem

- CAT RJ45 Cable
- USB Cable
- Inline Filter
- 9VAC 1.0A Power Pack
- Driver & Manual CD
- Telephone Cable

Environmental

Operating Temperature

- 0 – 40 deg C

Storage Temperature

- -20 – 55 deg C

Operating Humidity

- 20 – 95% non-condensing

Emissions (EMI)

- FCC Class B
- ICES-003
- CE Class B

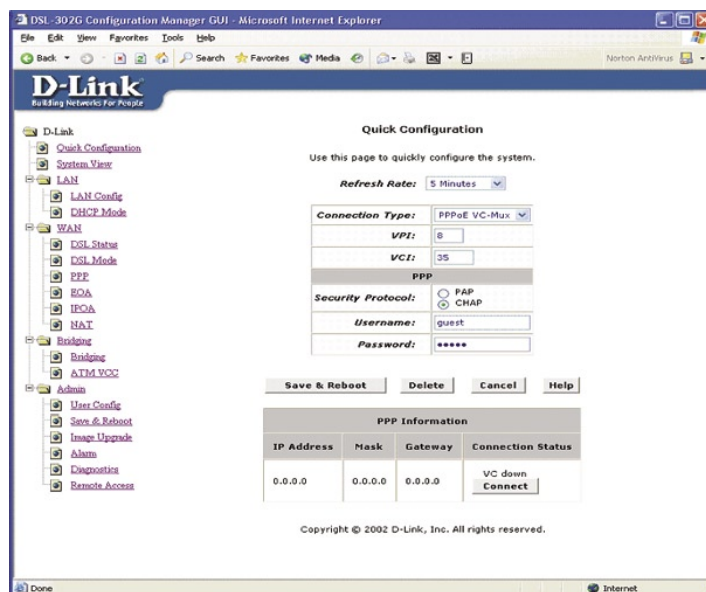
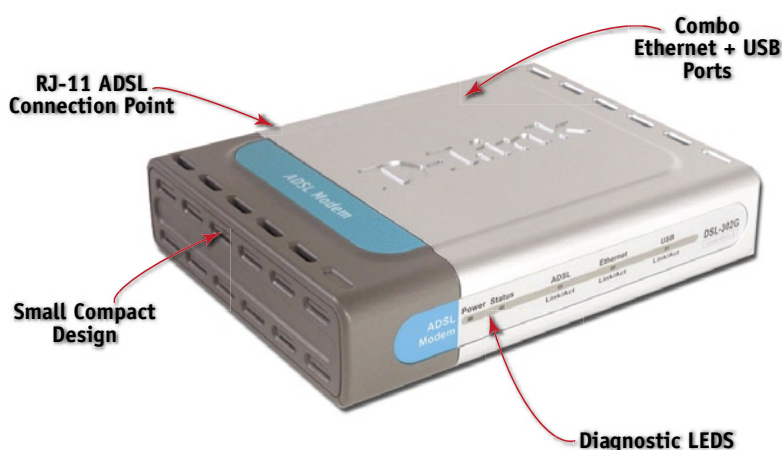
Safety

- C-Tick Certified
- A-Tick Certified
- CSA International Mark

Ordering Information

- ADSL Modem - DSL-302G

(ADSL modem with 10/100Mbps Fast Ethernet USB 1.1 interface to host)



Configuration Utility makes it easy to quickly set up and configure the DSL-302G. It displays a wide array of management settings and tools.

D-Link Australia Pty. Ltd. 1 Giffnock Avenue NSW 2113 Phone: +61-(0)2-8899-1800 www.dlink.com.au
©Copyright D-Link Australia Pty. Ltd. 2004. All rights reserved.
D-Link® is a registered trademark of D-Link Australia Pty. Ltd.
Other trademarks or registered trademarks are the property of their respective manufacturers or owners.
Specifications are subject to changes without notice.



D-Link®
Building Networks for People