

How to Setup Automatic Internet Connection Failover to 4G LTE USB Adapter in DSR-1000AC / DSR-500AC

DSR-1000AC / DSR-500AC firmware ver. 3.17B302T

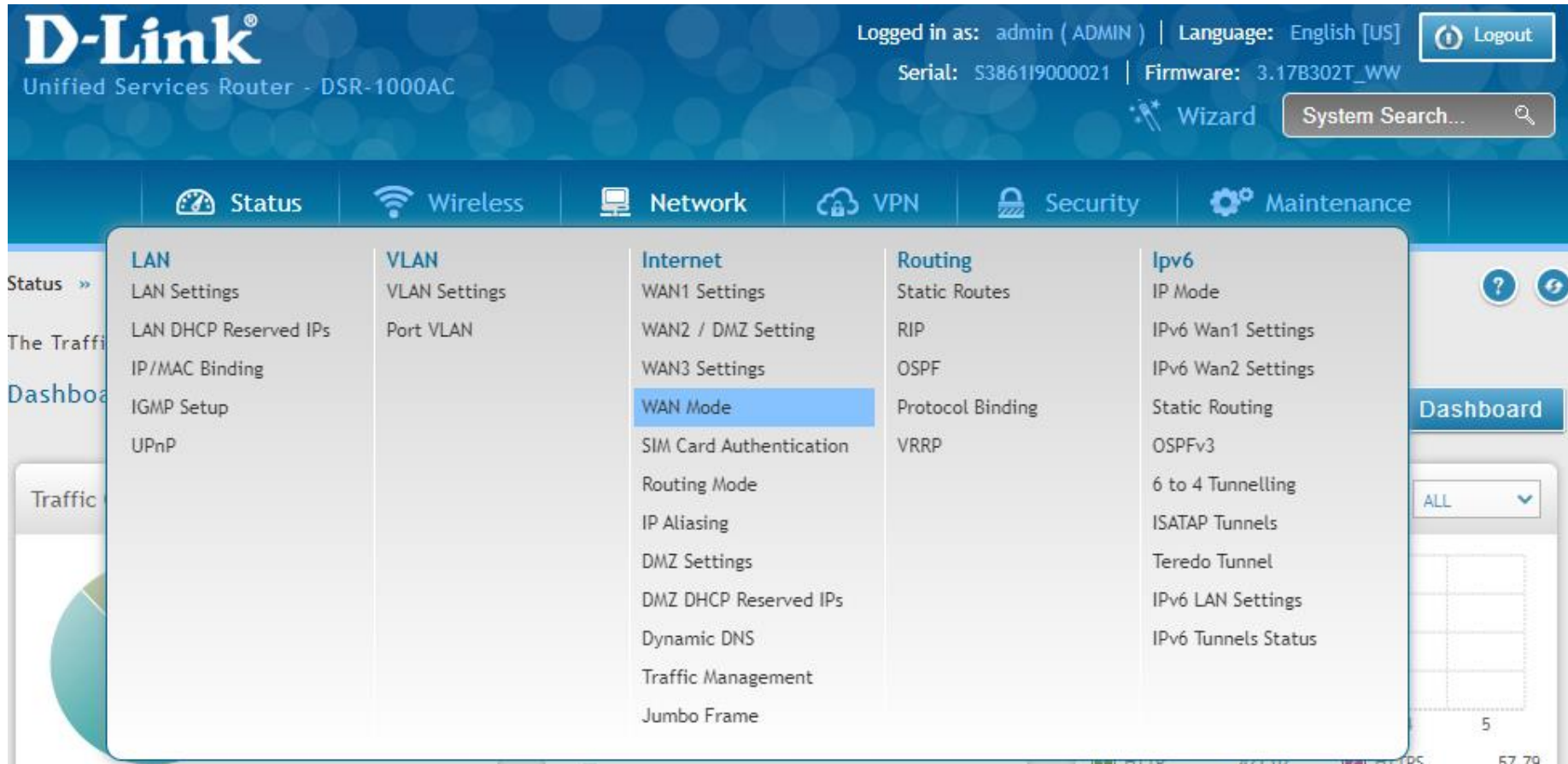


DSR-500AC / DSR-1000AC



DWM-222

Step 1. Go to Network > Internet > WAN Mode:



Under “WAN Mode” choose the “Auto Rollover using WAN port” option.

Make sure that “Use Primary WAN port” is set to “WAN1” (if your primary Internet link is connected to WAN1 of the router).

Set “Use Secondary WAN port” to “WAN3” (your USB 4G LTE adapter will be set as WAN3 in the next step).

Network » Internet » WAN Mode

This page allows user to configure the policies on the three WAN ports for Internet connection. By configuring both WANs, there are two ways for the router to access the internet. Load balancing allows traffic to and from the internet to be shared across both configured links to ensure one ISP is not excessively overloaded. Auto-Rollover uses a backup link to preserve internet connectivity for the LAN if the main ISP configured on the primary WAN fails for any reason.

WAN Mode

WAN Mode Setup

WAN Mode: Auto-Rollover using WAN port

Auto-Rollover using WAN port

Use Primary WAN port: WAN1 WAN2 WAN3

Use Secondary WAN port: WAN3

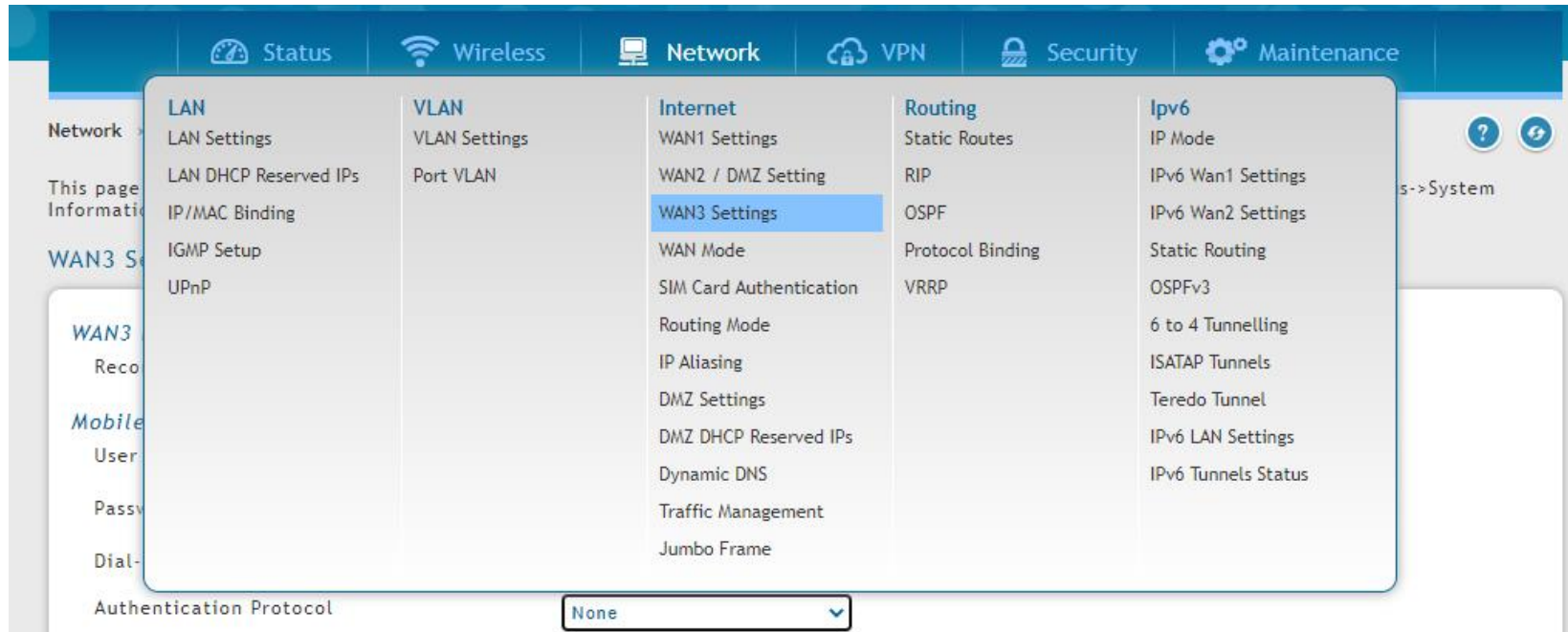
WAN health check: WAN DNS Servers

Retry Interval is: [Default: 30, Range: 5 - 999] Seconds

Failover After: [Default: 4, Range: 2 - 999] Failures

Step 2. Plug compatible 3G/4G USB adapter into USB port 1 or port 2 of the router. The D-Link DWM-222 is recommended as a compatible adapter.

Go to Network > Internet > WAN3 Settings:



Configure your 3G/4G LTE connection with APN details given by your provider. In our example we are using Telstra SIM.

WAN3 Settings

WAN3 (Mobile Internet)

Reconnect Mode Always On On Demand

Mobile Internet Connection Type

User Name Optional

Password Optional

Dial-In Number

Authentication Protocol ▾

APN Required ON OFF

APN

Domain Name System (DNS) Servers

DNS Server Source Get Dynamically from ISP Use These DNS Servers

Port Setup

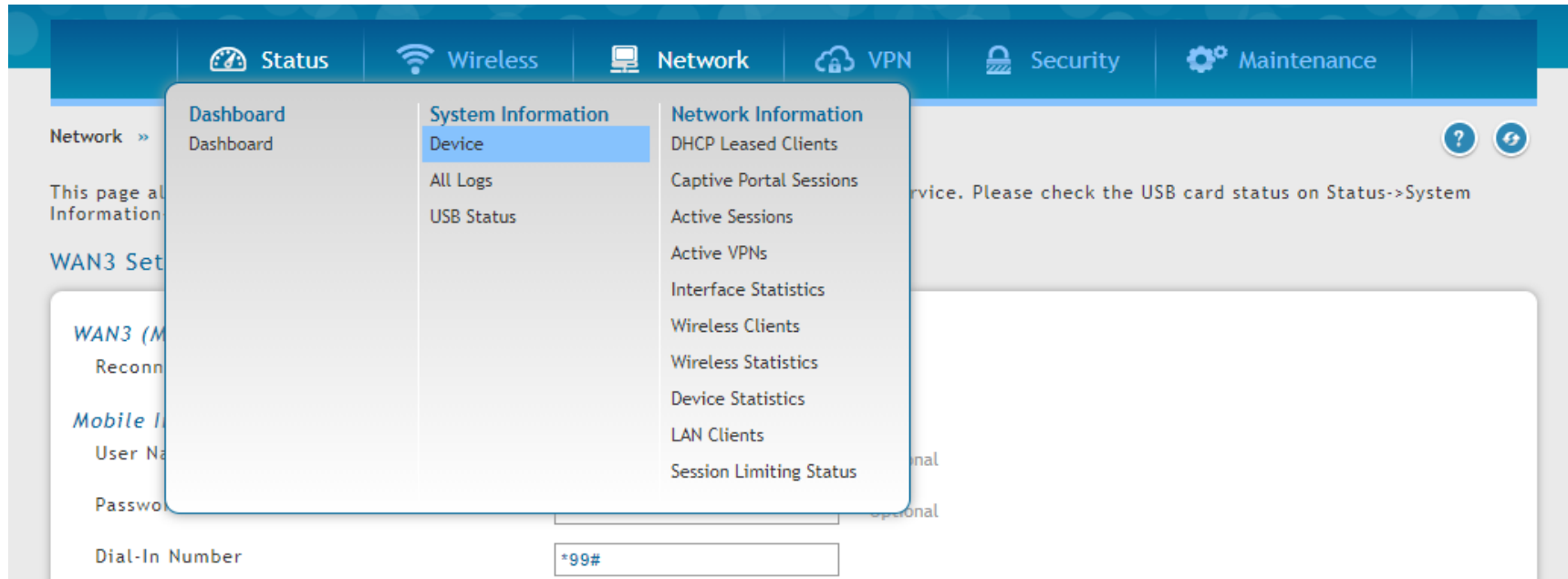
MTU Size Default Custom

Click on "Save".

The setup is now complete.

To test your 3G/4G connectivity unplug your primary Internet connection from the router's WAN1. Wait for about 30 seconds and check if your Internet connection has been reestablished via the USB 3G/4G adapter:

Go to Status > System Information > Device



Check the WAN3 connection status:

Status » System Information » Device » WAN3

System LAN WAN1 WAN2 **WAN3** Wireless

All of your WAN3 network connection details are displayed on the Device Status page.

WAN3 Information

Description	WAN3 Info
MAC Address	0E:0E:1E:F8:DD:74
IPv4 Address	10.103.183.112 / 255.255.255.224
IPv6 Address / Prefix	N/A
Status	UP
IPv6 Connection Type	N/A
IPv6 Connection State	N/A
NAT (IPv4 Only)	Enabled
IPv4 Connection Type	Mobile Internet
IPv4 Connection State	Connected
Link State	LINK UP
WAN Mode	Auto-Rollover using port: WAN1
Gateway	10.103.183.113
Primary DNS	10.4.27.70
Secondary DNS	10.4.149.70

End of Document