

Configuration Guide



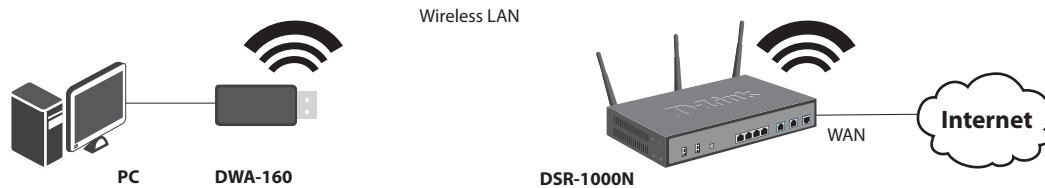
How to Configure WPS Features in DSR Series

Overview

This document describes how to configure D-Link DSR-1000N to enable WPS (Wi-Fi Protected Setup) feature. Basically, DSR router series doesn't allow to enable WPS feature when wireless security setting is Non-Encryption or WEP due to security concern in SMB environment. This document will lead you to create a secure enough wireless setting with WPA enabled in DSR-1000N.

Situation note

WPS feature is an ideal solution which allow administrators to quickly make connection between DSR routers and PC/NB. In this scenario, it uses D-Link DWA-160 USB adapter plugged in PC for wireless connectivity. If you use other wireless network interface cards, please make sure that it can support WPS feature in advance. In this condition, configuration steps will probably have some difference.



Firmware version
1.03B09_WW

Configuration Step for DSR-1000N

- Under the **SETUP->Network Settings-> Profile**, click **Profiles**.

DSR-1000N	SETUP	ADVANCED	TOOLS	STATUS
Wizard				
Internet Settings	INTERNET CONNECTION			LOGOUT
Wireless Settings	Access Points	through common configuration tasks such as changing the password, timezone and net connection.		
Network Settings	Profiles			
DMZ Setup	WMM	Setup Wizard		
VPN Settings	Radio Settings	our easy to use Web-based Wizards to assist you in connecting your new D-Link Systems Router to the Internet, click on the button below.		
USB Settings		<input type="button" value="Internet Connection Setup Wizard"/>		
VLAN Settings				
	Note: Before launching these wizards, please make sure you have followed all steps outlined in the Quick			

2. Select a profile of access point and click the **Edit** button.

DSR-1000N	SETUP	ADVANCED	TOOLS	STATUS			
Wizard							
Internet Settings	PROFILES LOGOUT						
Wireless Settings	<p>A profile is a grouping of wireless settings which can be shared across multiple APs. AP specific settings are configured on the Access Point Configuration page. The profile allows for easy duplication of SSIDs, security settings, encryption methods, client authentication, etc. across APs.</p>						
Network Settings	List of Profiles						
DMZ Setup	<input type="checkbox"/>	Profile Name	SSID	Broadcast	Security	Encryption	Authentication
VPN Settings	<input checked="" type="checkbox"/>	default1	DSR-1000N_1	✓	OPEN	NONE	NONE
USB Settings	<input type="button" value="Edit"/> <input type="button" value="Delete"/> <input type="button" value="Add"/>						
VLAN Settings							

3. Please make sure that the security setting must be **WPA** or **WPA2** for the access point.

DSR-1000N	SETUP	ADVANCED	TOOLS	STATUS
Wizard				
Internet Settings	PROFILES LOGOUT			
Wireless Settings	<p>The Profile Configuration page allows you to set or modify the network identifiers and wireless settings of a particular wireless profile. Profiles can be applied to more than once access point if needed.</p>			
Network Settings	<input type="button" value="Save Settings"/> <input type="button" value="Don't Save Settings"/>			
DMZ Setup	Profile Configuration			
VPN Settings	Profile Name:	default1		
USB Settings	SSID:	<input type="text" value="DSR-1000N_1"/>		
VLAN Settings	Broadcast SSID:	<input checked="" type="checkbox"/>		
	Security:	WPA2 ▼		
	Encryption:	CCMP ▼		
	Authentication:	PSK ▼		
	WPA Password:	<input type="password" value="••••••••"/>		

4. Under **ADVANCED**->**Wireless Settings**->**WPS**, click **Add**.

Name	Enable	Protocol	Interface	Outgoing Ports		Incoming Ports	
				Start Port	End Port	Start Port	End Port
	<input type="checkbox"/>						

Please configure at least one AP with WPA/WPA2 security to use this feature.

WPS LOGOUT

This page allows you to define and modify the Wi-Fi Protected Setup (WPS) configuration parameters.

Save Settings Don't Save Settings

WPS Configuration

Select VAP: None

WPS Status: Disabled

Note: If the wireless security setting is Not WPA or WPA2, it will show following warning message and all WPS options are grayed out.

5. Select **Enable** from **WPS Status** drop-down menu then click **Save Settings**.

WPS LOGOUT

This page allows you to define and modify the Wi-Fi Protected Setup (WPS) configuration parameters.

Save Settings Don't Save Settings

WPS Configuration

Select VAP: ap1

WPS Status: Enabled

DSR-1000N	SETUP	ADVANCED	TOOLS	STATUS
Application Rules ▶	<div style="text-align: right;">LOGOUT</div> <p>This page allows you to define and modify the Wi-Fi Protected Setup (WPS) configuration parameters.</p> <p>Save Settings Don't Save Settings</p> <hr/> <p>WPS Configuration</p> <p>Select VAP: <input type="text" value="ap1"/></p> <p>WPS Status: <input type="text" value="Enabled"/></p> <hr/> <p>WPS Current Status</p> <p>Security: WPA2</p> <p>Authentication: PSK</p> <p>Encryption: CCMP</p> <hr/> <p>WPS Setup Method</p> <p>Station PIN: <input type="text"/></p> <p>Configure via PIN Configure via PBC</p> <p>Session Status:</p>			

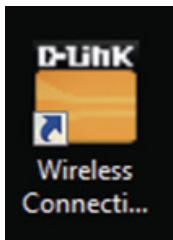
Note: Please leave the Station PIN as blank since we don't use PIN (Personal Identification Number) to connect wireless network in this scenario.

You have finished all necessary configuration for WPS feature in DSR-1000N side. Following section will go through how to configure DWA-160 for WPS connection.

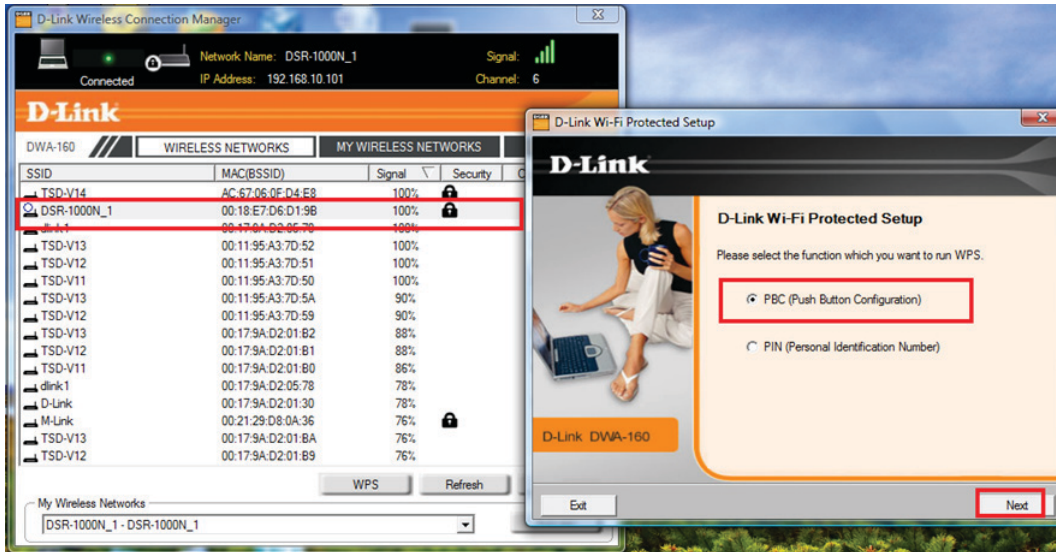
Configuration Step for DWA-160

We supposed that the D-Link DWA-160 has been successfully installed in your PC/Notebook. If your DWA-160 is still not installed yet, please refer to the User Manual of DWA-160 for more detail information.

1. Double click the Wireless Connection Manager icon on your desktop.



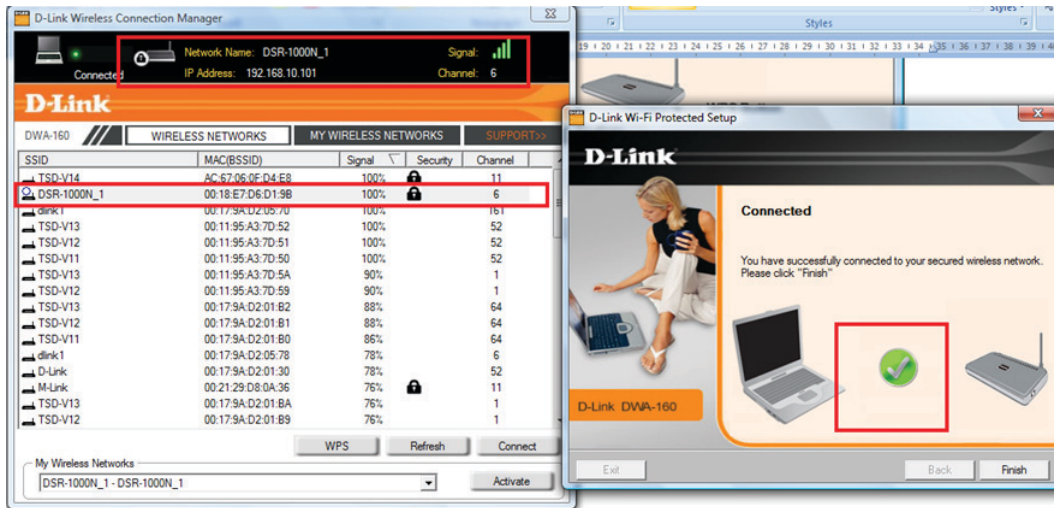
2. The wireless network (Site Survey) page will display all wireless networks that are available in your area. To connect a network, simply highlight the SSID with DSR-1000N_1 wireless network and click WPS button on Wireless Connection Manager. This Virtual button in the utility that connects you to WPS-enabled DSR-1000N router. Please select **PBC (Push Button Configuration)** then click **Next**.



In this step, DWA-160 is connecting to an available wireless router. You should press the WPS button located on front panel of DSR-1000N router to continue.



3. When this screen appears, you have successfully connected to your wireless network between DSR-1000N and DWA-160. Click Next to complete your setup.



D-Link[®]

Visit our website for more information
www.dlink.com

D-Link, D-Link logo, D-Link sub brand logos and D-Link product trademarks are trademarks or registered trademarks of D-Link Corporation and its subsidiaries.
All other third party marks mentioned herein are trademarks of the respective owners.

Copyright © 2011 D-Link Corporation. All Rights Reserved.