

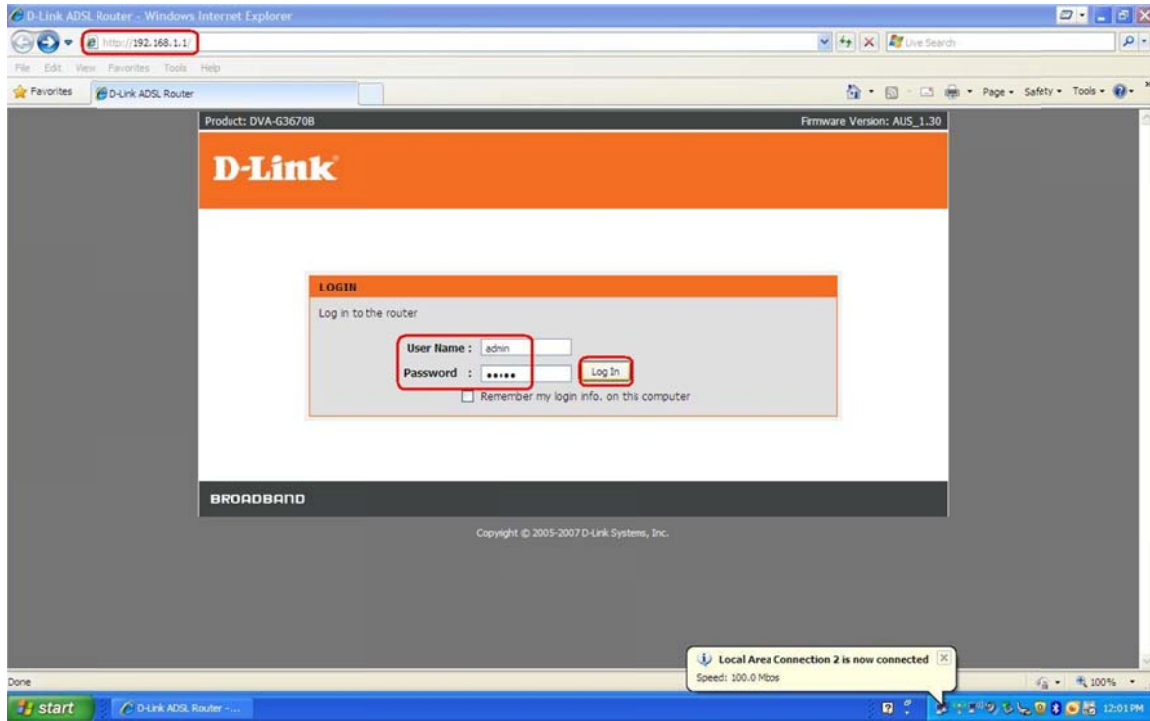
DVA-G3670B – How to connect via ADSL 1



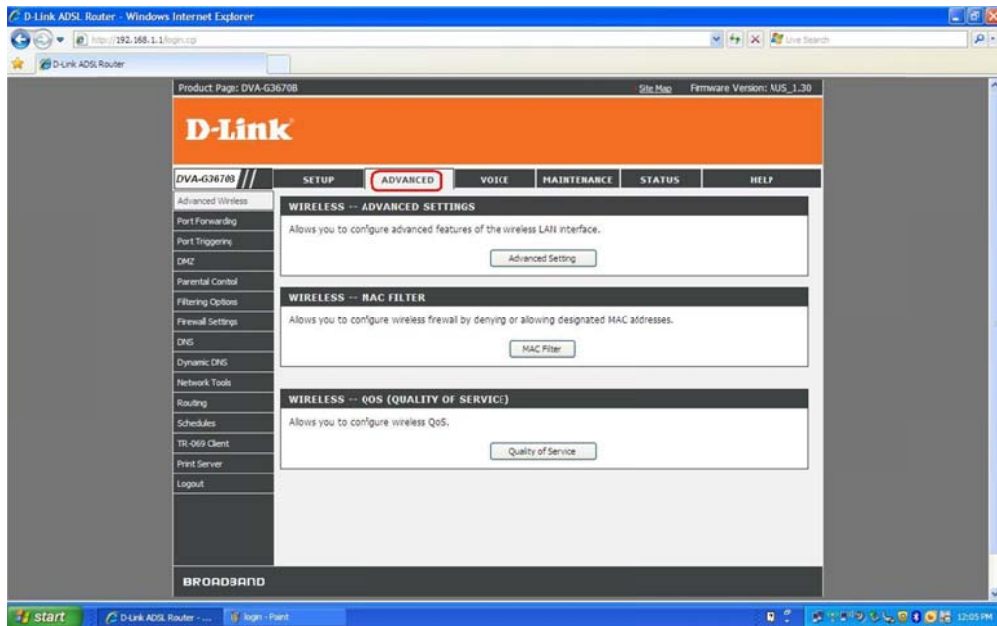
This document shows how to disable ADSL 2 / 2+ and connect via ADSL 1

1. Log in to the router setup page with the computer connected to the Ethernet port.

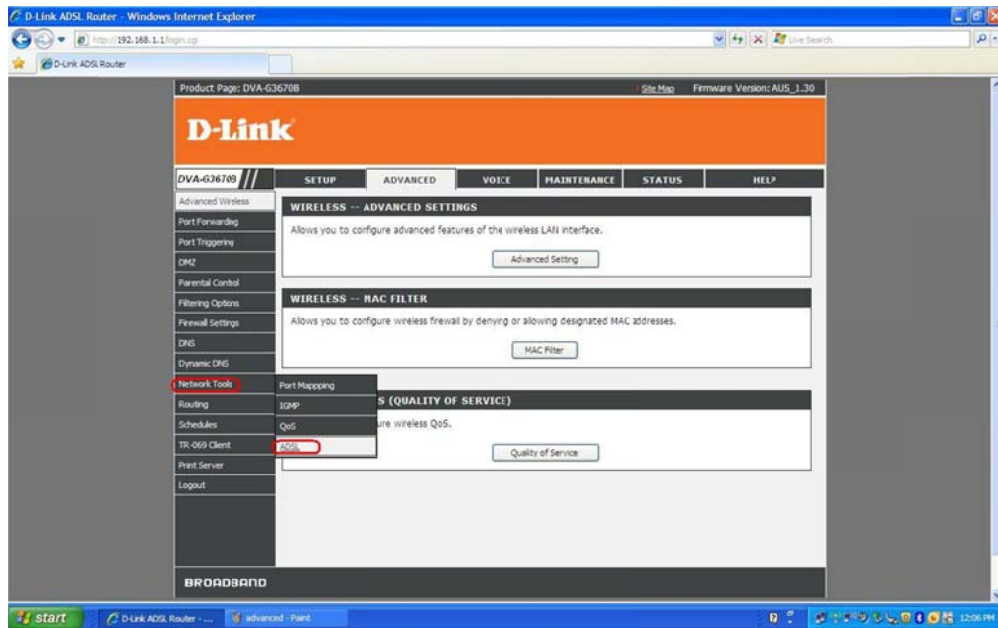
- URL: <http://192.168.1.1> (default)
- Username: admin
- Password: admin (default)



2. Click ADVANCED on the top menu.

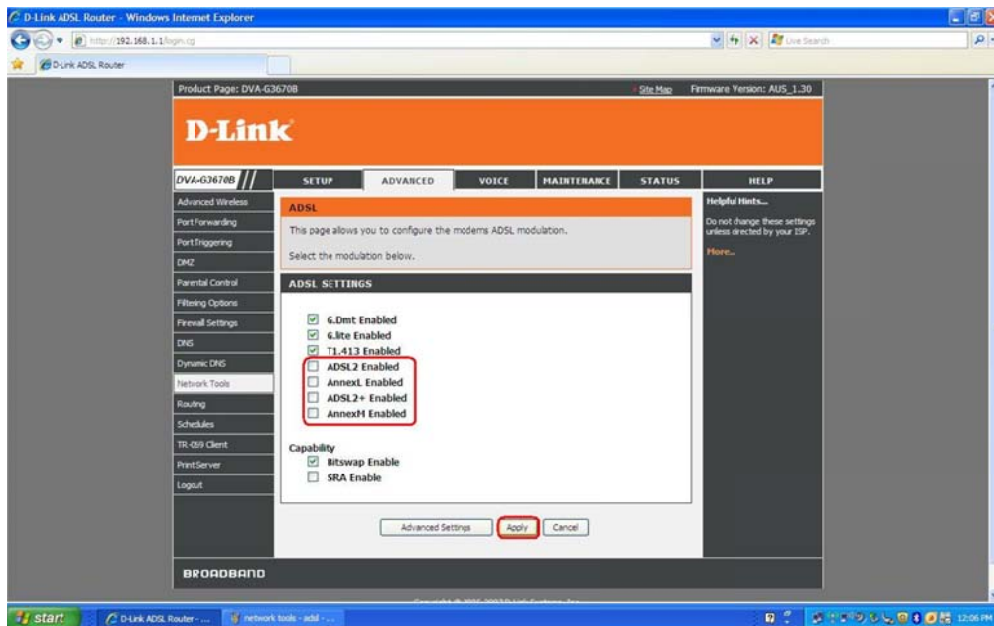


2a. Then click **Network Tools > ADSL** at the sub-menu



2b. Uncheck the boxes for the following options

- **ADSL2 Enabled**
- **AnnexL Enabled**
- **ADSL2+ Enabled**
- **AnnexM Enabled**



3. Click **Apply**