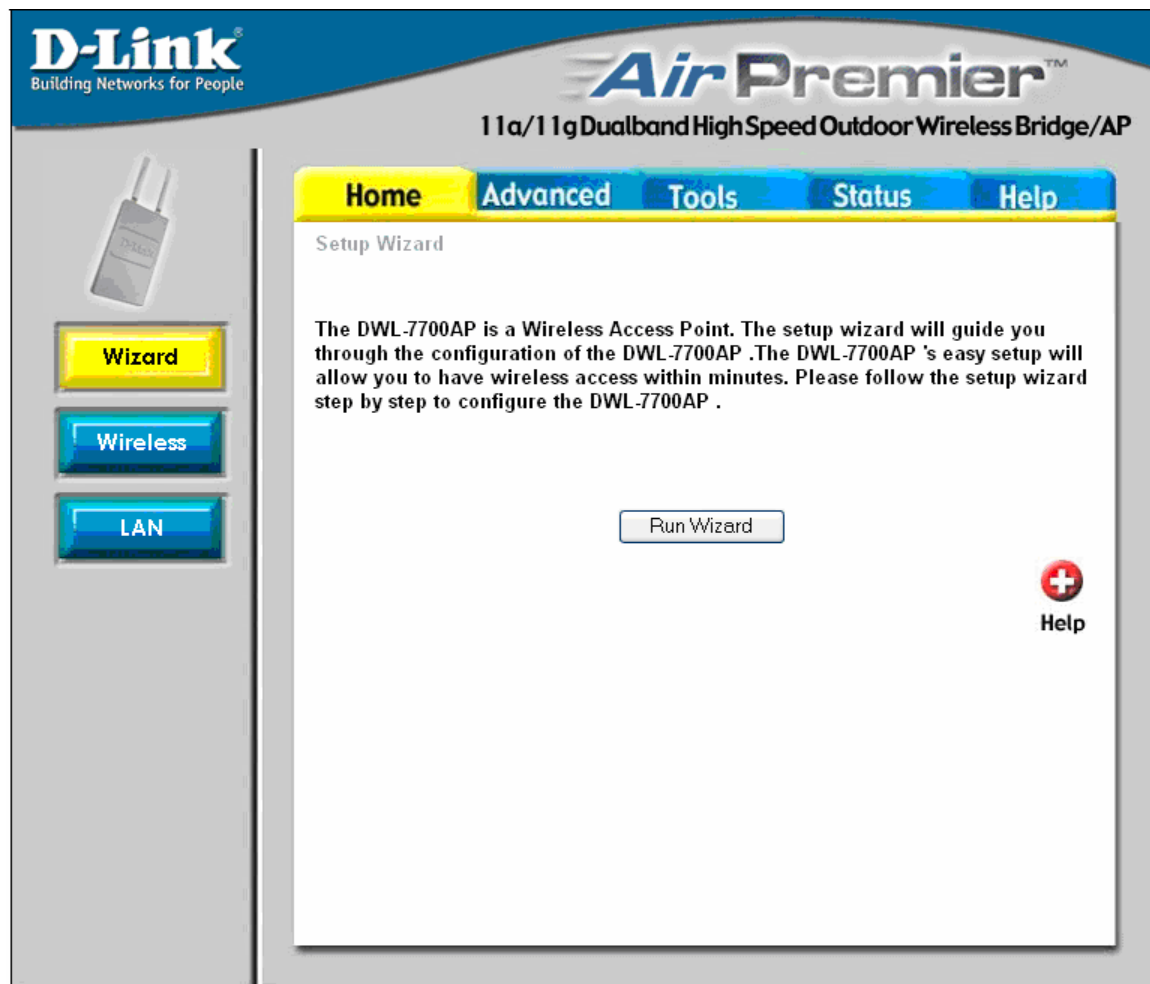
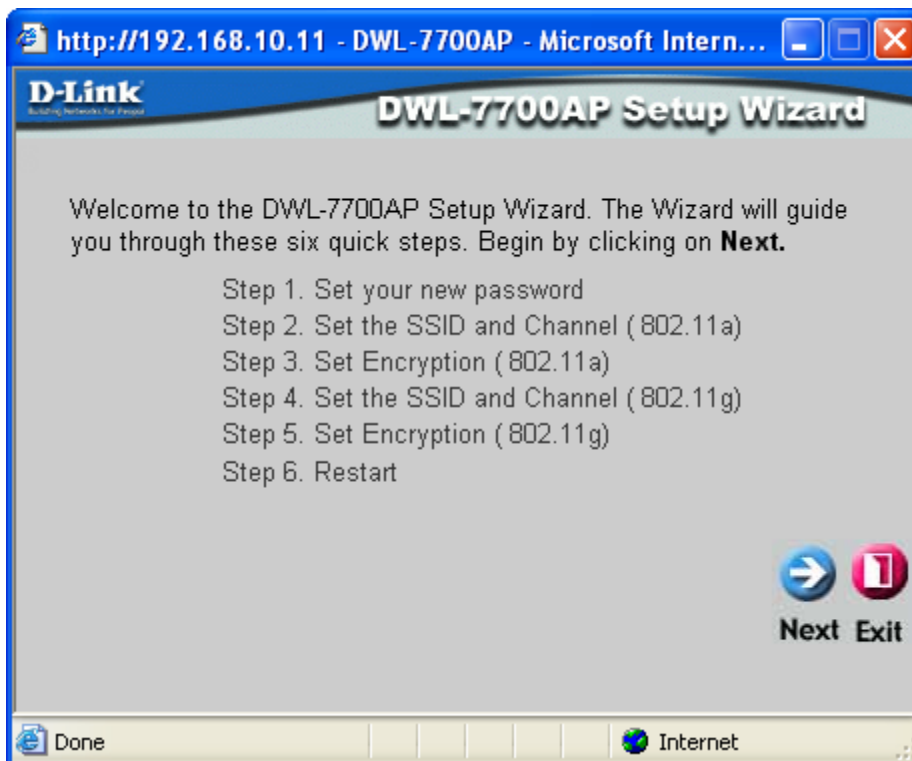


Model: DWL-7700AP
f/w: 1.00au
Created by: Edwin Cadisal





http://192.168.10.11 - DWL-7700AP - Microsoft Intern...

D-Link
Building Networks for Progress

DWL-7700AP Setup Wizard

Set Wireless LAN 802.11a Connection

Enter the SSID and choose the Channel for the 802.11a Wireless LAN Connection. Click **Next** to continue.

SSID:

Channel:

44

36

40

44

48

52




56



60

64

149

153

  
Back Next Exit

 Done  Internet

http://192.168.10.11 - DWL-7700AP - Microsoft Intern...

D-Link
Building Networks for Progress

DWL-7700AP Setup Wizard

WEP Encryption for 802.11a




If you wish to use encryption, enable it here and enter the encryption Key Values. Click **Next** to continue.


WEP: ☒ Disabled ☐ Enabled

Key Type: ☒ HEX ☐ ASCII

Key Size: ☒ 64 ☐ 128 ☐ 152

Key:

  
Back Next Exit

 Internet

http://192.168.10.11 - DWL-7700AP - Microsoft Intern...

D-Link
Building Networks for People




DWL-7700AP Setup Wizard

Set Wireless LAN 802.11g Connection


Enter the SSID and choose the Channel for the 802.11g Wireless LAN Connection. Click **Next** to continue.

SSID:

Channel:

Back Next Exit

 Internet

http://192.168.10.11 - DWL-7700AP - Microsoft Intern...

D-Link
Building Networks for People

DWL-7700AP Setup Wizard

WEP Encryption for 802.11g



If you wish to use encryption, enable it here and enter the encryption Key Values. Click **Next** to continue.

WEP: ☒ Disabled ☐ Enabled


Key Type: ☒ HEX ☐ ASCII

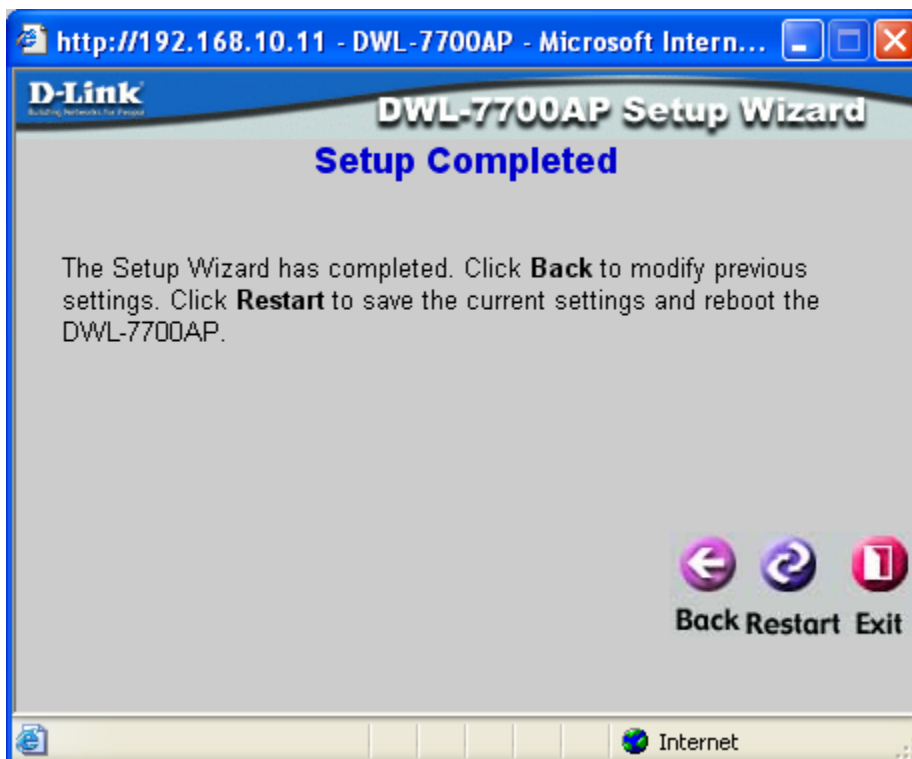
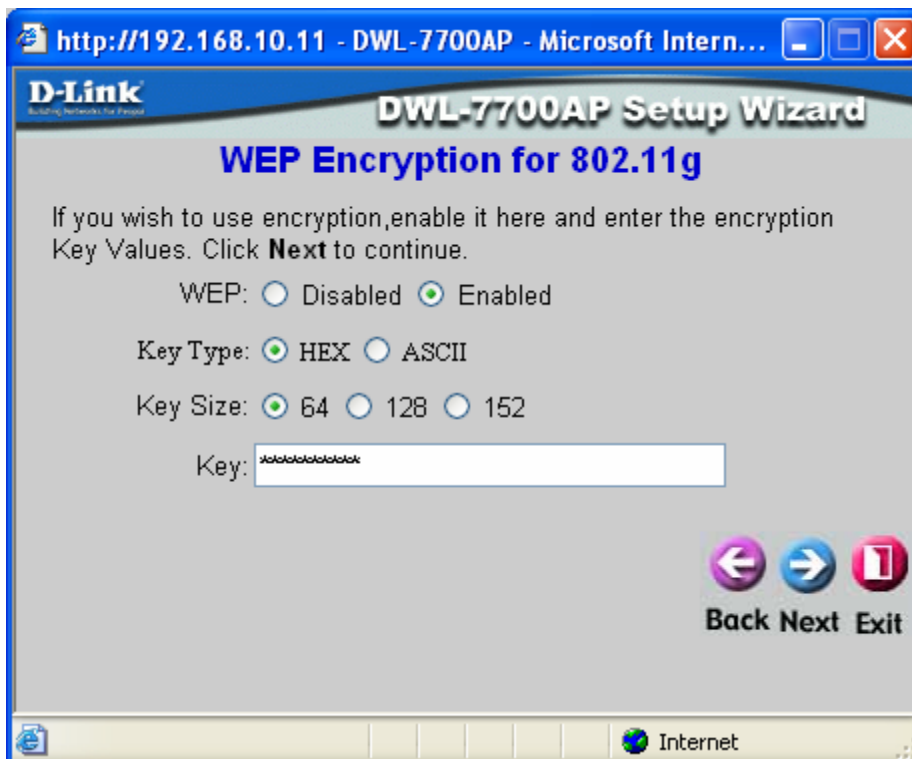
Key Size: ☒ 64 ☐ 128 ☐ 152

Key:

Back Next Exit

 Done Internet





Wizard

Wireless

LAN

Home

Advanced

Tools

Status

Help

Wireless Settings

Wireless Band: IEEE802.11a
SSID: IEEE802.11a
SSID Broadcast: Enable
Channel: 44
Radio Frequency: 5.22 GHz



Apply Cancel Help



Wizard

Wireless

LAN

Home

Advanced

Tools

Status

Help

LAN Settings

Get IP From

IP Address

Subnet Mask

Default Gateway



Apply Cancel Help



Wizard

Wireless

LAN

Home

Advanced

Tools

Status

Help

LAN Settings

Get IP From	Static (Manual) ▼
IP Address	Static (Manual)
	Dynamic (DHCP)
Subnet Mask	255.255.255.0
Default Gateway	0.0.0.0



Apply



Cancel



Help



Mode

Performance

Filters

Encryption

Grouping

DHCP Server

Home

Advanced

Tools

Status

Help

AP Mode Settings

Wireless Band : IEEE802.11a ▼

☒ Access Point

☐ PtP Bridge

Remote AP MAC Address

1. 2.
3.

☐ PtMP Bridge

Remote AP MAC Address

1. 2.
3. 4.
5. 6.
7. 8.
9. 10.
11. 12.
13. 14.
15. 16.

☐ AP Client

Root AP MAC Address



Apply



Cancel



Help



Mode

Performance

Filters

Encryption

Grouping

DHCP Server

Home

Advanced

Tools

Status

Help

AP Mode Settings

Wireless Band : IEEE802.11a

- ☒ Access Point

☐ PtP Bridge

Remote AP MAC Address

1. 2.
3.

☐ PtMP Bridge

Remote AP MAC Address

1. 2.
3. 4.
5. 6.
7. 8.
9. 10.
11. 12.
13. 14.
15. 16.

☐ AP Client

Root AP MAC Address



Mode

Performance

Filters

Encryption

Grouping

DHCP Server

Home

Advanced

Tools

Status

Help

AP Mode Settings

Wireless Band : IEEE802.11a

- ☐ Access Point
- ☒ PtP Bridge

Remote AP MAC Address

1. 2.
3.

- ☐ PtMP Bridge

Remote AP MAC Address

1. 2.
3. 4.
5. 6.
7. 8.
9. 10.
11. 12.
13. 14.
15. 16.

- ☐ AP Client

Root AP MAC Address





Mode

Performance

Filters

Encryption

Grouping

DHCP Server

Home

Advanced

Tools

Status

Help

AP Mode Settings

Wireless Band : IEEE802.11a

☐ Access Point

☐ PtP Bridge

Remote AP MAC Address

1. 2.
3.

☒ PtMP Bridge

Remote AP MAC Address

1. 2.
3. 4.
5. 6.
7. 8.
9. 10.
11. 12.
13. 14.
15. 16.

☐ AP Client

Root AP MAC Address





Mode

Performance

Filters

Encryption

Grouping

DHCP Server

Home

Advanced

Tools

Status

Help

AP Mode Settings

Wireless Band : IEEE802.11a ▼

☐ Access Point☐ PtP Bridge

Remote AP MAC Address

1. 2.
3.

☐ PtMP Bridge

Remote AP MAC Address

1. 2.
3. 4.
5. 6.
7. 8.
9. 10.
11. 12.
13. 14.
15. 16.

☒ AP Client

Root AP MAC Address



Apply



Cancel



Help



Mode

Performance

Filters

Encryption

Grouping

DHCP Server

Home

Advanced

Tools

Status

Help

Advance Wireless Settings

Wireless Band

Turbo Setting

Frequency

Channel

Data Rate

Beacon Interval
(20 - 1000)

DTIM
(1 - 255)

Fragment Length
(256 - 2346)

RTS Length
(256 - 2346)

Transmit Power



Apply Cancel Help



Mode

Performance

Filters

Encryption

Grouping

DHCP Server

Home

Advanced

Tools

Status

Help

Advance Wireless Settings

Wireless Band

Turbo Setting

Frequency

Channel

Data Rate

Beacon Interval
(20 - 1000)

DTIM
(1 - 255)

Fragment Length
(256 - 2346)

RTS Length
(256 - 2346)

Transmit Power



Apply Cancel Help



Mode

Performance

Filters

Encryption

Grouping

DHCP Server

Home

Advanced

Tools

Status

Help

Advance Wireless Settings

Wireless Band	IEEE802.11g
Turbo Setting	Disabled
Frequency	2.437 GHz
Channel	6
Data Rate	Auto
Beacon Interval (20 - 1000)	Auto
DTIM (1 - 255)	1 Mb
Fragment Length (256 - 2346)	2 Mb
RTS Length (256 - 2346)	5.5 Mb
Transmit Power	6 Mb
	9 Mb
	11 Mb
	12 Mb
	18 Mb
	24 Mb
	36 Mb
	48 Mb
	54 Mb



Apply Cancel Help



Mode

Performance

Filters

Encryption

Grouping

DHCP Server

Home

Advanced

Tools

Status

Help

Wireless Access Settings / [WLAN Partition](#)

Wireless Band IEEE802.11a

Access Control Disabled

Mac Address Save



Apply Cancel Help

MAC Address

Delete

MAC Address

Delete



Mode

Performance

Filters

Encryption

Grouping

DHCP Server

Home

Advanced

Tools

Status

Help

WLAN Partition / [Wireless Access Settings](#)

Wireless Band IEEE802.11a

Internal Station Connection ☒ Enabled

Ethernet to WLAN Access ☒ Enabled

Internal Station Connection Between 802.11a & 802.11g

☒ Connection Enabled



Apply Cancel Help



- Mode
- Performance
- Filters
- Encryption
- Grouping
- DHCP Server

Home **Advanced** **Tools** **Status** **Help**

Wireless Access Settings / [WLAN Partition](#)

Wireless Band

Access Control

Mac Address

MAC Address	Delete	MAC Address	Delete
-------------	--------	-------------	--------



Mode

Performance

Filters

Encryption

Grouping

DHCP Server

Home

Advanced

Tools

Status

Help

Security Settings

Wireless Band: IEEE802.11a

- Authentication
- ☒ Open System
 - ☐ Shared Key
 - ☐ Open System / Shared key
 - ☐ 802.1x
 - ☐ WPA
 - ☐ WPA-PSK

PassPhrase: You are using PSK.

Cipher: WEP

- Encryption
- ☐ Disabled
 - ☒ Enabled

Key Type: HEX

Key Size: 64 Bits

Valid Key: First

Key Table

First Key: *

Second Key: *

Third Key: *

Fourth Key: *



Apply



Cancel



Help



- Mode
- Performance
- Filters
- Encryption
- Grouping**
- DHCP Server

Home

Advanced

Tools

Status

Help

AP Grouping Settings

Load Balance

User Limit (0 - 64)

Link Integrate

Ethernet Link Status

  
Apply Cancel Help



Mode

Performance

Filters

Encryption

Grouping

DHCP Server

Home

Advanced

Tools

Status

Help

[Dynamic Pool Settings](#) / [Static Pool Settings](#) / [Current IP Mapping List](#)

DHCP Server Control

Function Enable/Disable

Dynamic Pool Settings

IP Assigned From

The Range of Pool (1-255)

SubMask

Gateway

Wins

DNS

Domain Name

Lease Time (60 - 31536000 sec)

Status



Apply Cancel Help



- Mode
- Performance
- Filters
- Encryption
- Grouping
- DHCP Server**

Home

Advanced

Tools

Status

Help

[Static Pool Settings](#) / [Current IP Mapping List](#) / [Dynamic Pool Settings](#)

DHCP Server Control

Function Enable/Disable **Disabled** ▼

Static Pool Settings

Assigned IP

Assigned MAC Address

SubMask

Gateway

Wins

DNS

Domain Name

Status **OFF** ▼



Apply Cancel Help

Assigned Static Pool

MAC Address	IP address	State	Edit	Delete
-------------	------------	-------	------	--------



Mode

Performance

Filters

Encryption

Grouping

DHCP Server

Home

Advanced

Tools

Status

Help

[Current IP Mapping List](#) / [Dynamic Pool Settings](#) / [Static Pool Settings](#)

Current DHCP Dynamic Pools

Binding MAC Address	Assigned IP address	Lease time
---------------------	---------------------	------------

Current DHCP Static Pools

Binding MAC Address	Assigned IP address
---------------------	---------------------



Admin

System

Firmware

Cfg File

Misc.

Home

Advanced

Tools

Status

Help

Administrator Settings

User Name

Old Password

New Password

Confirm New Password

  
Apply Cancel Help



Admin

System

Firmware

Ctg File

Misc.

Home

Advanced

Tools

Status

Help

System Settings

Apply Settings and Restart

Restore to Factory Default Settings



Help



Admin

System

Firmware

Cfg File

Misc.

Home

Advanced

Tools

Status

Help

Update Firmware From Local Hard Drive

Firmware Version: v1.00au

Update File

Browse...

OK



Help



Admin

System

Firmware

Cfg File

Misc.

Home

Advanced

Tools

Status

Help

Update Configuration File

Update File

Browse...

OK

Download Configuration File

Load settings to Local Hard Drive

OK



Help



- Admin
- System
- Firmware
- Cfg File
- Misc.

Home

Advanced

Tools

Status

Help

Telnet Settings

Status ☒ Enabled

Timeout

1 Min
5 Mins
10 Mins
15 Mins
Never



Apply Cancel Help



Device Info

Stats

Indication

Client Info

Home

Advanced

Tools

Status

Help

Device Information

Firmware Version: v1.00au

MAC Address: 00:0f:3d:fd:b4:37

Ethernet

Get IP From:	Manual
IP address:	192.168.10.11
Subnet Mask:	255.255.255.0
Gateway:	192.168.10.1

Wireless (802.11a)

SSID:	default
Channel:	44
Turbo Mode:	Disabled
Rate:	Auto
Security Level:	Open System / Encryption Disabled

Wireless (802.11g)

SSID:	default
Channel:	6
Turbo Mode:	Disabled
Rate:	Auto
Security Level:	Open System / Encryption Enabled



Help



Device Info

Stats

Indication

Client Info

Home

Advanced

Tools

Status

Help

[WLAN 802.11A Traffic Statistics](#) / [WLAN 802.11G Traffic Statistics](#)

ThroughPut

Transmit Success Rate	100 %
Transmit Retry Rate:	1 %
Receive Success Rate:	100 %
Receive Duplicate Rate:	0 %
RTS Success Count:	0
RTS Failure Count:	0

Transmitted Frame Count

Transmitted Frame Count	12595
Multicast Transmitted Frame Count	126
Transmitted Error Count:	2
Transmitted Total Retry Count:	154
Transmitted Multiple Retry Count:	154

Received Frame Count

Received Frame Count	525
Multicast Received Frame Count	12287
Received Frame FCS Error Count:	0
Received Frame Duplicate Count:	0
Ack Rcv failure Count:	0

Wep Frame Error Count

WEP Excluded Frame Count	0
WEP ICV Error Count	0



Refresh



Help



Device Info

Stats

Indication

Client Info

Home

Advanced

Tools

Status

Help

[WLAN 802.11G Traffic Statistics](#) / [WLAN 802.11A Traffic Statistics](#)

ThroughPut

Transmit Success Rate	100 %
Transmit Retry Rate:	0 %
Receive Success Rate:	100 %
Receive Duplicate Rate:	0 %
RTS Success Count:	7
RTS Failure Count:	0

Transmitted Frame Count

Transmitted Frame Count	15386
Multicast Transmitted Frame Count	12299
Transmitted Error Count:	0
Transmitted Total Retry Count:	0
Transmitted Multiple Retry Count:	0

Received Frame Count

Received Frame Count	360972
Multicast Received Frame Count	371
Received Frame FCS Error Count:	0
Received Frame Duplicate Count:	0
Ack Rcv failure Count:	0

Wep Frame Error Count

WEP Excluded Frame Count	0
WEP ICV Error Count	0



Refresh



Help



Device Info

Stats

Indication

Client Info

Home

Advanced

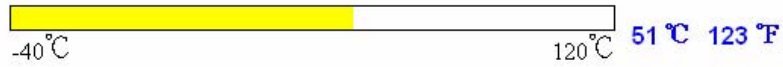
Tools

Status

Help

Indication

Temperature indication



Device Info

Stats

Indication

Client Info

Home

Advanced

Tools

Status

Help

[WLAN 802.11A Client Information](#) / [WLAN 802.11G Client Information](#)

Client Information: 0 station(s)

MAC	Band	Authentication	RSSI(%)	Power Saving Mode
-----	------	----------------	---------	-------------------



Device Info

Stats

Indication

Client Info

Home

Advanced

Tools

Status

Help

[WLAN 802.11G Client Information](#) / [WLAN 802.11A Client Information](#)

Client Information : 0 station(s)

MAC	Band	Authentication	RSSI(%)	Power Saving Mode
-----	------	----------------	---------	-------------------



Home

Advanced

Tools

Status

Help

Home

- [Setup Wizard](#)
- [Wireless](#)
- [LAN Settings](#)

Advanced

- [Mode](#)
- [Performance](#)
- [Filters](#)
- [Encryption](#)
- [Grouping](#)
- [DHCP Server](#)

Tools

- [Administrator Settings](#)
- [System Settings](#)
- [Firmware Upgrade](#)
- [Configuration File Upgrade](#)
- [Miscellaneous Upgrade](#)

Status

- [Device Information](#)
- [Statistics](#)
- [Indication](#)
- [Client Info](#)

FAQs