

USER MANUAL

DWM-156

VERSION 3.00



D-Link[®]

MOBILE

Introduction

1.1 Introduction

Thank you for choosing the D-Link dongle.

To guarantee D-Link dongle always in its best condition, please read this manual carefully and refer to it for general operational information.

The pictures, symbols and contents in this manual are just for your reference. They might not be completely identical with your device. We operate a policy of continuous development and reserve the right to update and modify the technical specifications in this document at any time without prior notice.

It is a type of multi-mode, 3G modem or card, applicable to GSM/GPRS/EDGE/WCDMA/HSDPA(HSUPA) networks. The interface connects most PCs to the internet, integrating functions of the MODEM device and mobile phone, into a mobile communication device. Via GSM/GPRS/EDGE/WCDMA/HSDPA mobile networks, it supports data services and SMS services, helping you break away from the limitations of time and zone, and communicate wirelessly anytime and anywhere.

1.2 Safety Warning and Notice

To the owner

Some electronic devices are susceptible to electromagnetic interference sent by D-Link dongle if inadequately shielded, such as electronic systems of vehicles. Please consult the device manufacturer before using D-Link dongle if necessary.

Operation of your PC and D-Link dongle may interfere with medical devices like hearing aids and pacemakers. Please always keep D-Link dongle more than 20 centimeters away from such medical devices when they are in use. Pull out D-Link dongle if necessary. Consult a physician or the manufacturer of the medical device before using D-Link dongle.

Be aware of the usage limitation when using a D-Link dongle at places such as petrol stations or chemical factories, where there may be explosive gases or explosive products being processed. Do not use D-Link dongle if unsure.

Store the D-Link dongle out of the reach of small children, it may cause injury if used as a toy.

Device

Avoid using D-Link dongle near metallic structures, devices or establishments that can emit electromagnetic waves. This may adversely affect signal reception.

D-Link dongle is not waterproof. Please keep it dry and store in shady and cool place.

Do not use D-Link dongle immediately after sudden temperature change. In such case, condensation may form inside the device, potentially causing irreversible damage to it. Please allow adequate time to dry.

Treat D-Link dongle carefully and avoid destructive damage. Do not drop, twist, strike or otherwise harshly treat it.

In Aircraft

Please power off D-Link dongle before take-off. In order to protect in flight communication systems from interference, do not use D-Link dongle in flight. Use before taking off is subject to the usual aviation laws and the particular airline's policy. If in doubt seek advice from the cabin crew.

1.3 Applicability Scope

The D-Link dongle supports main types of laptops or other computers, such as HP, IBM, Toshiba, Lenovo, Dell, Founder, etc.

1.4 System Requirements

Recommended system configuration;

Operating System Windows XP / Vista / Win7 32/64bit , MAC OS and Linux

CPU 500MHz Pentium or above

Hard Disk 20G or above

RAM 128M or above

The performance of the D-Link dongle may be influenced if your laptop configuration is under this recommendation.

1.5 Functions

Functional support includes: SMS service, Data service, Phone book, etc.

Installation

2.1 Hardware Installation


1. Inserting the SIM/USIM Card into D-Link dongle:

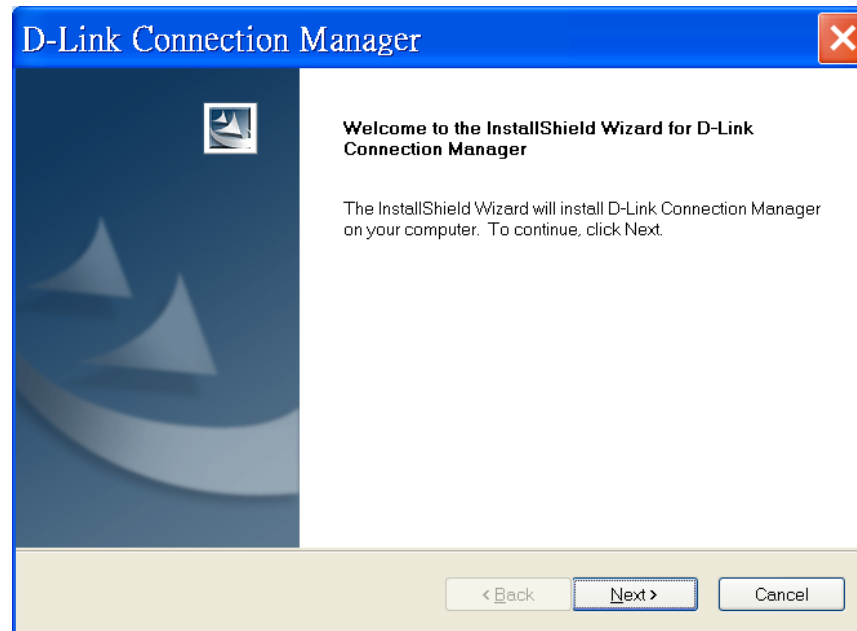
Before using D-Link dongle, please be sure that your SIM/USIM card provided by your network operator can support data services. Insert the SIM/USIM card with the metal contact area facing downwards into the SIM/USIM card slot.

2. Connecting D-Link dongle and PC:

Connect D-Link dongle with your PC. With the indicator turns on, D-Link dongle is properly inserted.

2.2 Running Application Software

After D-Link dongle is installed and connected normally, your PC will launch the application software automatically. After D-Link dongle initializes, the main interface appears. When the standby icon  appears in the right bottom side of desktop, D-Link dongle is ready to work normally.



If your notebook PC does not launch the application software automatically, click the **Start** → **Programs**→**D-Link**→**D-Link dongle**→**D-Link Connection Manager** menu on the notebook PC to run the application software, or double click the shortcut icon on the desktop to run the application software.

Please note: D-Link dongle may take up to 30 seconds to launch the PC interface. If you click the D-Link Connection Manager icon before D-Link dongle has auto-launched then on some PC's an error notice may appear. Please ignore this message and close this window.

2.3 Removing D-Link dongle Safely

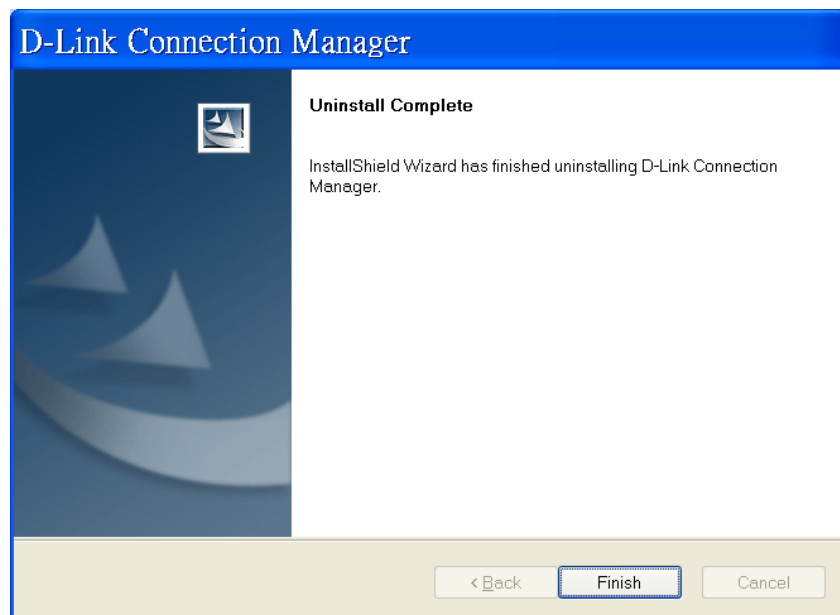
Please close the application software first and then pull out D-Link dongle.

2.4 Uninstalling the Software

Close the application program before uninstalling the software.

Left click **Start**→**Programs**→**D-Link**→**D-Link dongle**→ **Uninstall** menu on the PC.

Click the right button as indicated by the software, the system begins to uninstall programs and complete the uninstall process of the application software.

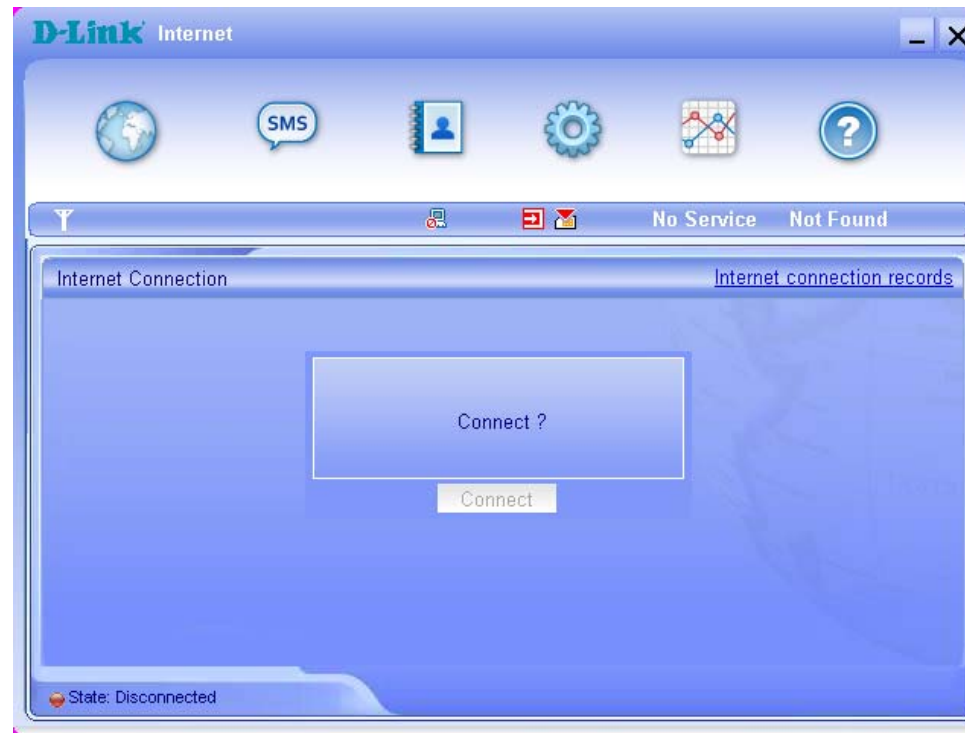


Functions & Operation

13.1 Interface Introduction

3.1.1 Main Interface

The PC interface comprises three parts: Functional Button Area, System Information Area, and User Area. The related functions can be executed by within the corresponding area.



1. Functional Button Area

There will be various functional button icons shown in this area. Left clicking on the selected function button will carry out the corresponding operation.



Internet: Connects to the Internet.



Short Message: Sending an SMS or reading the SMS Inbox.



Phonebook: Save and view the contact list.



Settings: Device related settings.






Statistics: Velocity waveform display and the traffic statistics.



Help


2. System Information Area


Shows system status and related information.


 Shows network signal intensity, 5 stages from none  to strong 

 There are new SMS in your inbox.


 Shows the current status of Internet connection. Red means you are currently disconnected from the Internet.

 The green icon shows that the current internet status is connected.

 Letter "P" means D-Link dongle is supporting packet-switch (P) or data services, while letter "C" means supporting circuit switch (C) services.


 SIM/USIM card is roaming.

 Indicates the connection status of D-Link dongle, "Green" it has been connected to the computer.


 "Orange" indicates the PC and D-Link dongle are connected but D-Link dongle offline.

 "Red" indicates disconnected.

 Indicates status of the SIM/USIM card. Green indicates the card has been inserted.

 Red indicates it has not been inserted.

 Indicates the current network service type, i.e. UMTS or GSM in service.

 Name of your service provider.

[Internet connection records](#) View related operational information, including, User Name, Starting time, Disconnect time, Duration, Data received and Data sent.

3. User Area

Show conditional interactive computer information.

3.1.2 Description of Minimize Icons

Clicking on the minimize button, minimizes the user interface to an icon on Windows taskbar. This does not influence data download, receiving SMS when connected to the Internet. Double click on the icon, D-Link dongle interface resizes.

1. Taskbar Icons' Description


indicates D-Link dongle is in normal standby status, D-Link dongle has been disconnected or connected to the Internet successfully.

 Green indicates D-Link dongle is connected to the PC.

 Orange indicates the PC and D-Link dongle are connected but D-Link dongle is offline.

 Red indicates no SIM/USIM card has been inserted D-Link dongle.

 No network signal is detected.

 You have new messages.

2. Using Taskbar Icon:

Right Click the taskbar Icon and the following menu will appear:

Device Offline: D-Link dongle has stopped and has disconnected from the Internet. When D-Link dongle is in this offline state, to run the software again you should pull out D-Link dongle and connect it with PC again. While the application interface is not shut down, this will pause then restore D-Link dongle to a working state. Be sure to stop D-Link dongle properly in windows.

Factory Settings: Restoring the settings of current network configuration to factory default value will not influence phonebook and saved messages.

Help: Enter the Help interface.

About: View application software and hardware information.

Exit: Close the application interface and stop using D-Link dongle.

Note: In this manual, "click" or "double click" means click the left button of mouse, unless stated otherwise.

3.2 Connecting to the Internet

You can browse web pages after you have accessed to the Internet through D-Link dongle. You can also receive SMS while surfing on the Internet.

1. Connect to the Internet

Click the **Internet** icon, the system will ask you "Connect to?" Select "**Connect**". When connected, it will show the "**Disconnect**" button, data flow, connected time, etc. During the course of connection, the "**Connect**" button becomes "**Disconnect**" button and you can cancel the connection. At the same time, an icon on taskbar appears indicating network connection. Then you can access Internet and receive email etc.



2. Disconnect from the Internet

Click "**Disconnect**" button to disconnect from the Internet. After disconnection, the normal standby icon appears on taskbar.



3.3 SMS

Inbox: View received SMS.

Outbox: View SMS sent successfully.

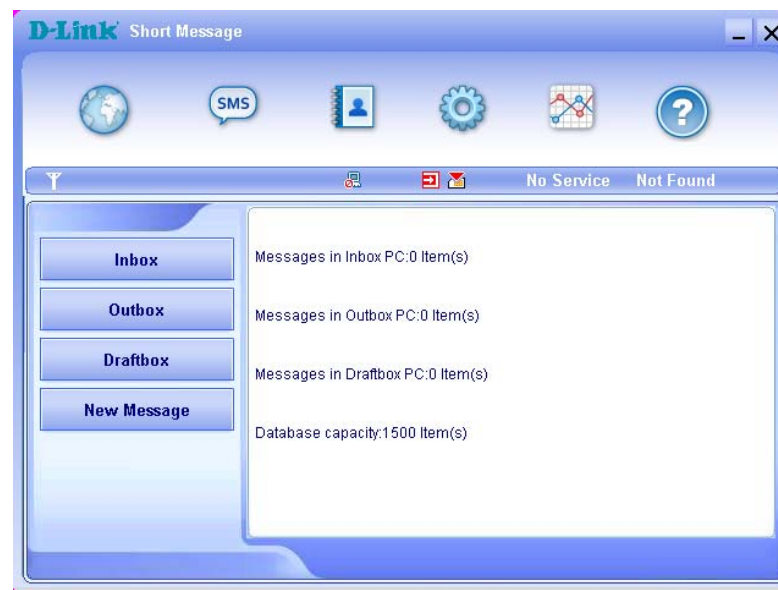
Draftbox: Save SMS on PC before sending.

For example: "Message in Inbox PC :1(Item) (U)SIM Card:0(Item)" indicates that there is 1 short message in the PC, and 0 short message in (U)SIM card. "(U)SIM card capability" means the (U)SIM card can store a maximum of 40 messages.

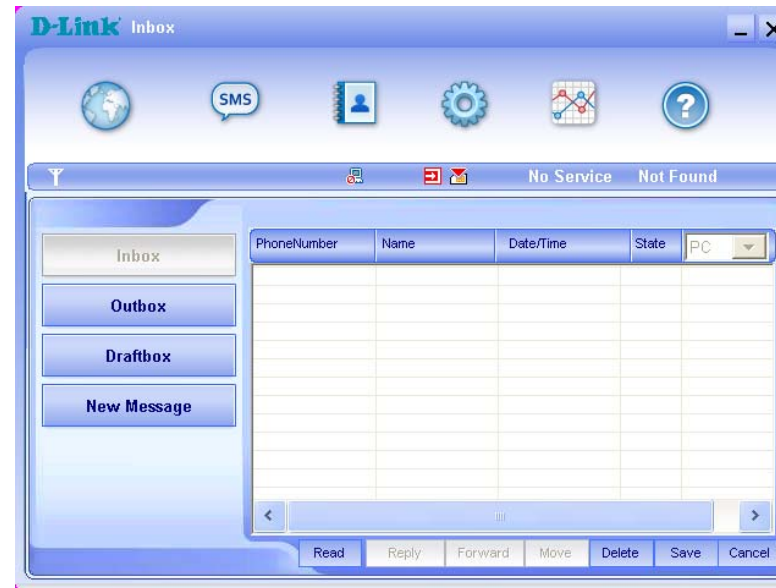
Different SIM/USIM cards have different capacity. The system will show the number you can store.

Note: To ensure the SMS features function properly, a correct SMS center number must be set. Refer to "3.5.4 Messages settings".

Click "**SMS**" icon to switch to the SMS interface and it shows the number of SMS in the inbox, outbox and "**Draftbox**". Click icon of "**Inbox**", "**Outbox**", "**Draftbox**" and "**New Message**" to enter relative interface.

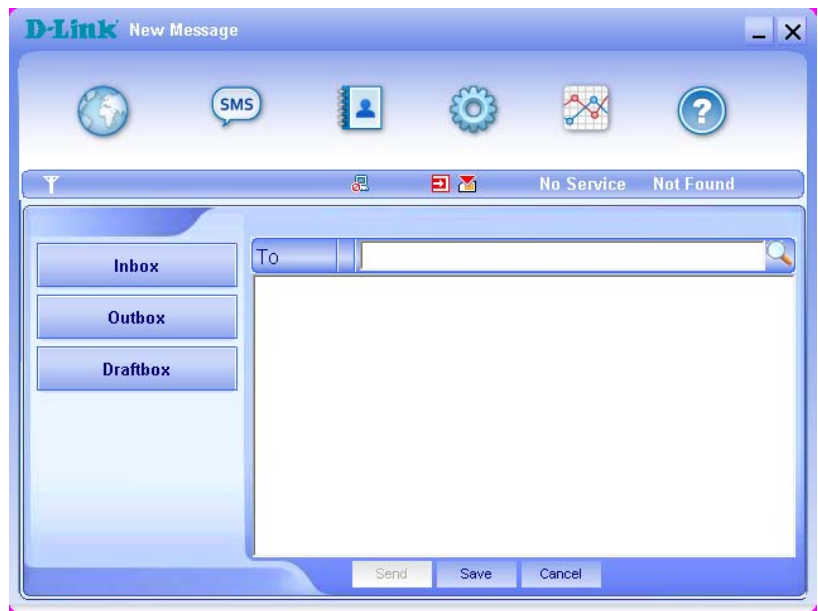


3.3.1 Read SMS



Click the **"Inbox"** button to read the SMS saved in the Inbox or click SMS icon in system information area to read New SMS. Make use of the bottom menu buttons to read, reply, forward, transfer, delete, save numbers or cancel message.

3.3.2 Create New Message



Click "**New Message**" button to input the recipient's number and content. Input the recipient's number directly or select one/more records from the **Phonebook** (The recipient's number(s) can be one or more, using ";" to separate). The single SMS text can not exceed 160 English characters (including English symbols). Otherwise, it will be divided into less than 5 separated SMS which length is 153 English characters (including English symbols). viz. The total characters (including English symbols) can not exceed 765.

Click "**Send**", make a choice of "**Yes**" or "**No**" according to the prompt on the display to send/cancel the short message. After sending successfully, this SMS will be saved into outbox automatically. If sending fails, the short message will be saved into Draftbox; click "**Cancel**" to return to "**Short Message**", click "**Save**" to return to the last windows form and the message will be saved on PC.

Send SMS while browsing the web:

You can send short messages when surfing on the Internet. Click the "**SMS**" icon button to enter the short message interface and send short messages in normal way.

3.3.3 The SMS Box Operating Guide

Enter any of Inbox/Outbox/Draftbox functions to execute the following:

Read: Read short message. (The content of short messages, sender's phone number, sending time and date).

Reply: Reply to the sender of the short messages.

Forward: Forward short message to other recipients.

Move: Change the saving location of short messages between PC or USIM/SIM card.

Delete: Delete short messages selected.

Save: Save the sender's number into the phonebook.

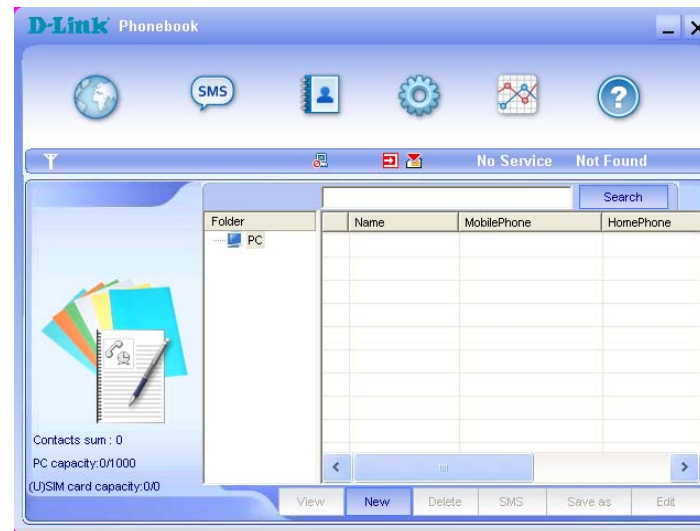
Cancel: Return to the SMS interface.

Make use of "Ctrl" or "Shift" key and left click to choose several messages and execute a function simultaneously.

The system indicates when USIM/SIM card is full. When the USIM is full a new message can only be received and saved if the user deletes short messages in the USIM/SIM card inbox.

3.4 Phonebook

Click the "**Phonebook**" icon to switch to the phone book interface. Phonebook information can be saved in the PC or SIM/USIM card. Each record includes contact Name, Mobilephone, Homephone, Officephone number, Email and Group name which it belongs to.



1. New Contact

Left click "New" → "New Contact", input all the information, then select "OK" to finish.

The screenshot shows a software dialog box titled "D-Link New contact". At the top, there is a toolbar with icons for a globe, SMS, a contact card, settings, a network diagram, and a help question mark. Below the toolbar is a status bar with "No Service" and "Not Found" indicators. The main content area has a "Save position" section with two radio buttons: "PC" (selected) and "(U)SIM card". Below this are several input fields: "Name", "MobilePhone", "HomePhone", "OfficePhone", "Email", and a "Groups" dropdown menu. At the bottom of the dialog are "OK" and "Cancel" buttons. On the left side of the main area, there is a graphic of a notepad and a pen.

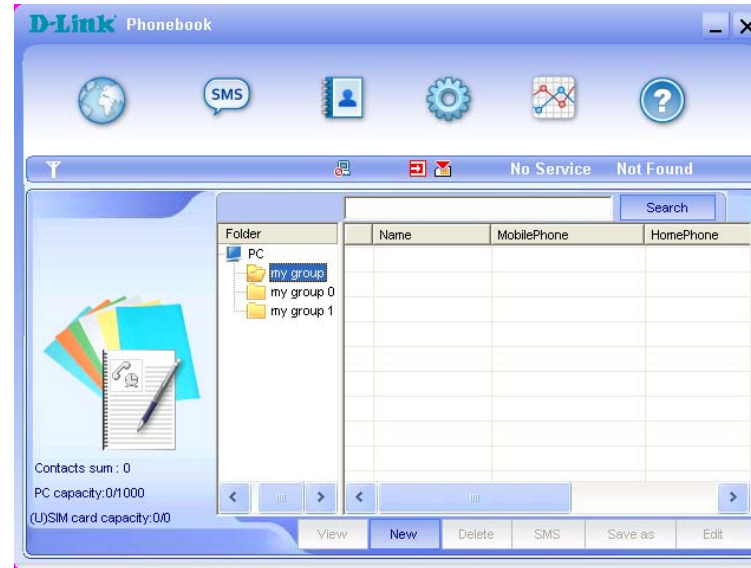
2. New Group

You can add new groups in the PC, but you can not add new groups in the (U)SIM card.

Left click **"New"** → **"New Group"** and name the new group in the PC group folder. Select the group you wish to add or edit and input the information according to prompt.

Select record from the list and click **"View"** to view information, click **"OK"** to close.

Select record from the list and click **"Edit"** to edit information, click **"OK"** to finish.



3. Buttons Description

If any contact or group is selected, you can carry out the following actions:

View: View contacts or group information.

Delete: Delete contacts.

SMS: Send message to the mobile phone numbers in the records or save it on PC before sending.

Save As: Save the contacts in portable PC as text file.

Edit: Edit the information of selected contact.

3.5 Settings

Click the "**Settings**" icon to switch to the settings interface. It includes: Connection Settings, Security Settings, Network Settings, Message Settings, Alert Settings.



3.5.1 Connection Settings

To ensure D-Link dongle connects to the Internet correctly, please configure user's network information first. You can save different operator's network configurations in different files.

1. Button Description:

Add: Add new configuration file.

Delete: Delete the selected configuration file.

Edit: Edit the selected configuration file.

Set default: Select one file from filename list, and set it as the current file.

2. Configuration File

Config File

Config Filename:

Dial Number:

User Name:

Password:

Save User Name and Password

Ask for User Name and Password

Obtain APN address automatically

Use the following APN name

Config:

PDP Type: IP PPP

Authentication Mode: PAP CHAP

Obtain DNS server address automatically

Use the following DNS server address

Preferred DNS:

Alternate DNS:

Obtain PDP address automatically

Use the following PDP address

Address:

OK Cancel

The user configuration information includes: Config Filename, Dial Number, User Name, Password, APN, DNS, and PDP address. If the network supports "Obtain server address automatically", D-Link dongle can obtain the assigned IP information automatically (this is usually the case). If the network does not support this, you should fill the proper address manually. The user configuration information may differ with the network supplier and network types. Please refer to the operator user guide for further information.

3.5.2 Security Settings



1. Enable the PIN Code

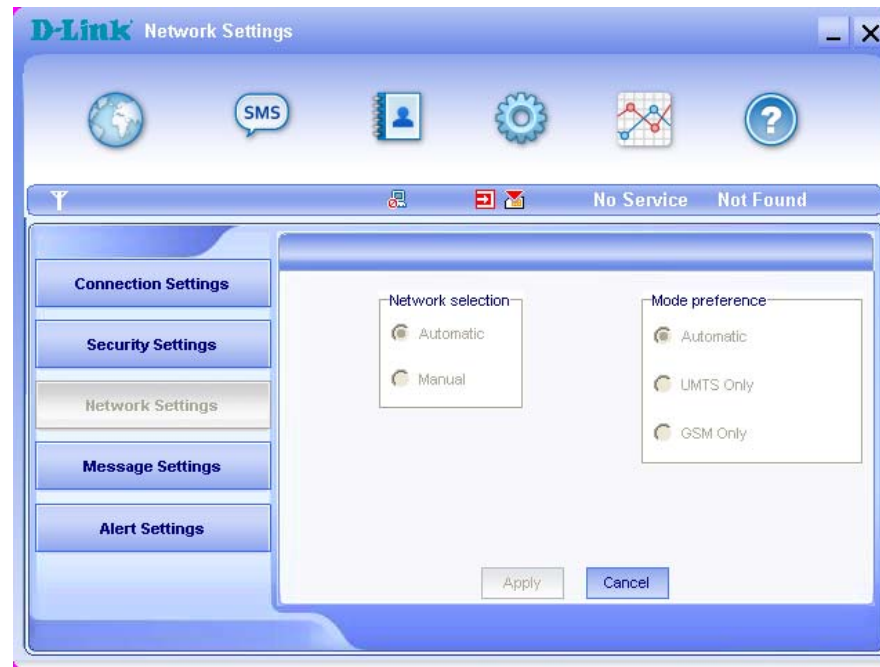
When the "PIN enable" item is selected, you will be asked to enter your PIN code to use D-Link dongle. You can click "**Change PIN**" to modify the PIN code.

Note: This function requires network support.

2. Backup Phonebook, Internet connection records and SMS

Select this function to backup the Phonebook, Internet connection records and SMS of PC in your PC. Click "**Resume**" to restore the backup data, restart the application from your PC after resume successfully.

3.5.3 Network Settings



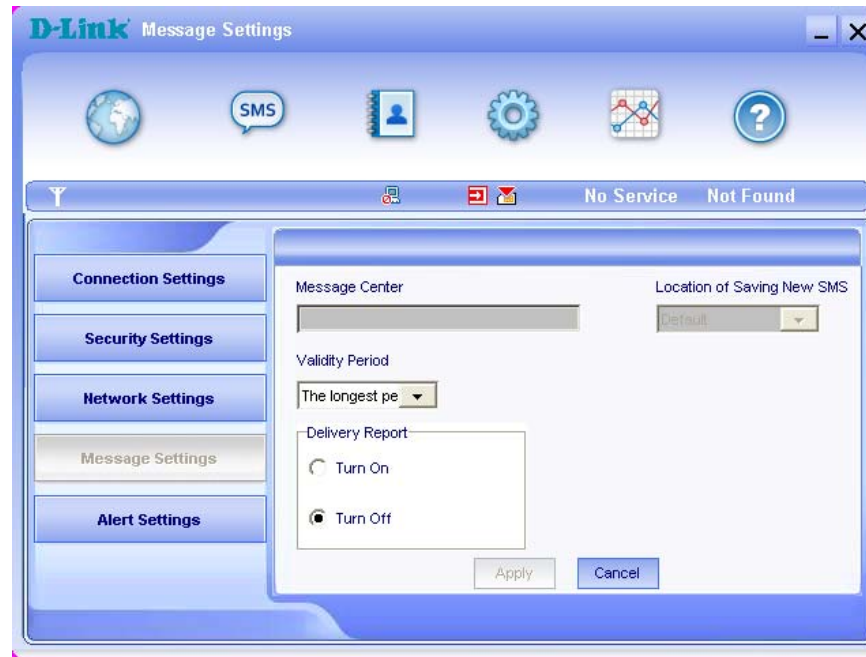
Automatic: The system selects the network automatically according to user configuration rules and network status.

Manual: User selects network settings.

Select network "**Automatic**" on left, and "Mode preference" on right, click "**Apply**", the system will indicate when completed successfully.

Select network "**Manual**", click "**Apply**". After a short while, the network operator list appears. Those in red are unavailable. Select the network you wish to connect to. Click "**Select**", to finish network settings.

3.5.4 Message Setting



Message Center: Set the corresponding SMS center number via the SIM/USIM card of the supplier. You must input the correct SMS center number provided by the network supplier to use the SMS properly. Please enter country code before the number.

Location of Saving New SMS: Set the location of saving new SMS. The options available are: Default/(U)Sim Card/PC.

Validity Period: Set the SMS storage time duration (this function needs network support). The options available are: 12 hours/A day/A week/The longest period.

Delivery Report: Set as "Turn On" or "Turn Off". When it is set as "Turn On", the network will inform you of the message delivery status.

3.5.5 Alert Settings

You can set "Connect alert, Disconnect alert, Incoming SMS alert ". An audible alert is made from your PC, selecting "Mute", silences the alert.



3.6 Help

Click the "Help" icon to switch to help interface. Under Help subject, you can get D-Link dongle information on functions introduction, installation and usage guide, etc.

FAQ & Answers

If you meet problems in service, please refer to the following answers for guidance. If the problems persist, please contact your supplier via the contact detail in your operator user guide.

Problem Description	Possible Causes	Problem Solving
The system can not run the installation program automatically	The system configuration is having difficulty with the auto-run software.	The device will appear as a virtual disc in ' My Computer' on the PC's start menu. Click on the icon and start the autorun.exe. If you have previously installed a version of the program, please uninstall it first.
After installation, the system doesn't install the driver program properly.	The system configuration is having difficulty with the auto-run software.	Please install the driver program manually. The driver program can be found in the installation folder; C:\Program Files\ D-Link Connection Manager\drivers
After the device is plugged in, the UI program doesn't run automatically.	The system configuration is incorrect.	Please open the Connection Manager manually. You can find it in the Start menu: "C:\Program menu or an alias icon on the desktop.
After restarting the computer, there is no signal indicated.	1. You are in the place where there is no GSM/ GPRS /EDGE /WCDMA /HSDPA(HSUPA) network coverage. Such places include underground parking garages, tunnels, and some remote rural areas.	1. Change location to find a good place where having signal.
	2. The device is not properly connected.	2. Close the device safely as usual, pull out the device and reinsert the device again.
	3. The SIM/USIM card isn't inserted properly.	3. Remove and reinsert the SIM/USIM card correctly.
	4. The D-Link dongle is positioned in such a way as that adversely affects the devices signal reception.	4. Adjust the angle / position of D-Link dongle or its proximity to other electronic devices.
When D-Link dongle is being installed, the computer cannot find it.	1. The installation programs of the D-Link dongle have not been installed properly.	1. Run the installation program first then connect the device. Now install the drivers as normal in Windows.
	2. D-Link dongle is not connected properly.	2. Restart the computer, or reconnect the device.
	3. The SIM/USIM card is not inserted properly.	3. Reinsert the SIM/USIM card correctly.

Sent Message failure.	1. The SMS center number is incorrect.	1. Your device is preconfigured so it is unlikely that it will need changing. However if it is missing or incorrect contact your operator.
	2. The network is busy or you are in an area with no signal.	2. Try later or move to an area with a stronger signal.
Data connection failed.	1. You are in the place where there is no GSM/ GPRS/ EDGE/ WCDMA/ HSDPA(HSUPA) network coverage.	1. Move to an area with good signal.
	2. The network is busy.	2. Try later.
	3. The APN in the user configuration file is incorrect.	3. Check the APN in the user configuration file in the "Connection Settings".
	4. The device data is corrupted.	4. Local network access or the target server maybe experiencing problems. Retry data request.
	5. The network type has been selected manually, but is incorrect.	5. Reselect the network type according to the type of the SIM/USIM card.
Connected to the Internet, but it cannot open any website page.	1. After connection, you are unable to open web pages.	1. Check that the APN in the configuration files is correct.
	2. IE browser is causing problems.	2. Upgrade to the new version or reinstall the IE browser.
	3. Your operating system maybe infected by a virus. Worm Blaster for example can affect upload and downloaded data flow, resulting in an inability to access a website.	3. Use the professional anti-virus software to check and remove the virus.
	4. You have connected to an APN which cannot connect to the Internet.	4. This happens when you are changing any preset operator value in the setting section. Check the entry and enter the correct APN from your operator.