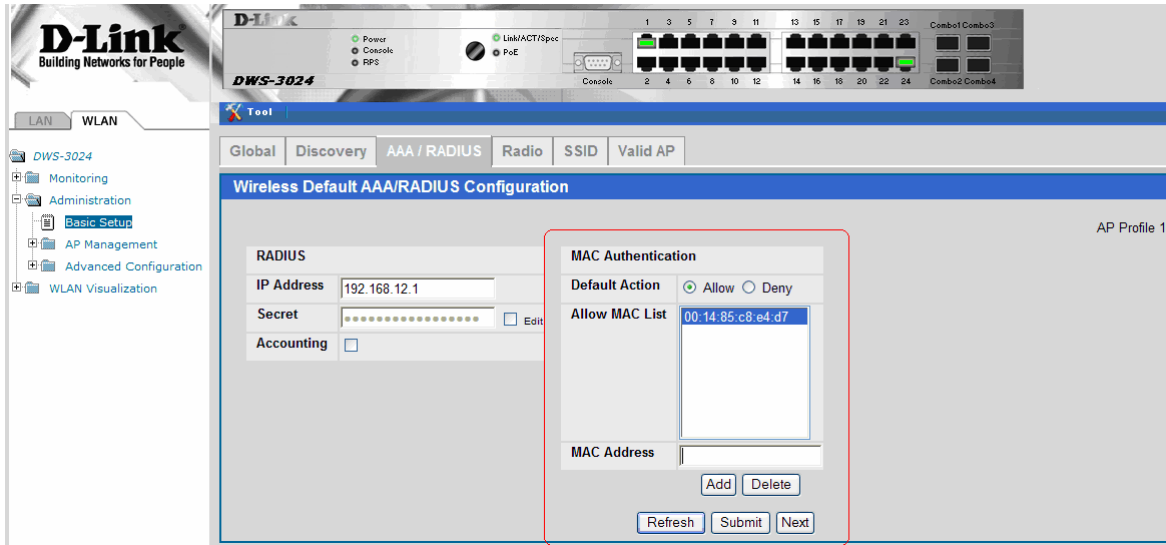


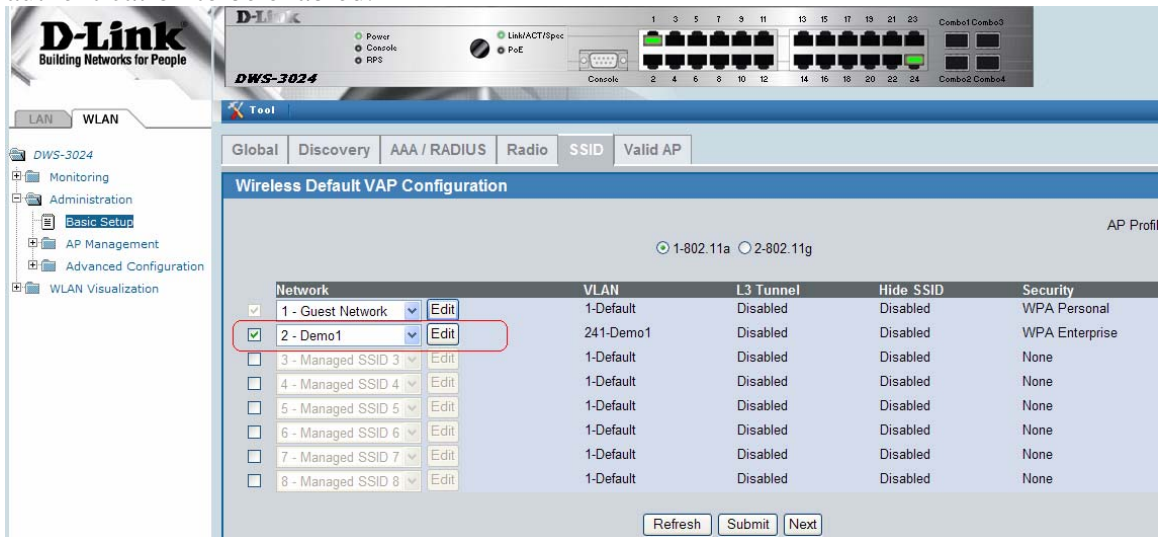
How To Setup MAC Authentication On A Wireless Switch

Log into your D-Link Wireless Switch. Go to WLAN tab > Administration > AAA/RADIUS tab > MAC Authentication.

You can add the MAC addresses of the clients in the field provided and select the Default Action to Allow or Deny access. Then click Submit.



Then go to the SSID tab and click on the Edit button next to the SSID you want the MAC authentication to be enabled.



From the Edit menu as shown below, click on radio button for Local MAC Authentication then click Submit.



Then go to Administration > AP Management > Reset. Tick the box next to the AP's MAC address and click on the Reset button.
Note: If you have multiple access points, they all need to be reset for the settings to take effect.

