

Quick Installation Guide

Product Overview

The CY-SWR1100 is a simultaneous wireless dual band N router which supports 2.4Ghz and 5Ghz wireless signals and Gigabit (1000Mbps) wired networks.

The CY-SWR1100's special features such as One Foot Connection and Plug & Access make connecting wirelessly with Samsung TV especially easy. What's more, it's Priority QOS feature can give your Samsung TV priority network access, ensuring you get the highest quality streaming contents and the fastest throughput speed.

Package Contents



Quick
Installation
Guide



Power Adapter



Software CD
(Quick Setup Wizard,
User's manual)



Ethernet Cable



Stand



Wall Mount kit

Network Diagram



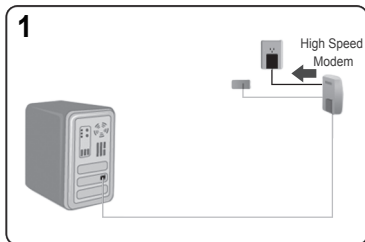
Please check the following information before starting.

- Your modem must have an ethernet port (also known as LAN port) and your internet connection must be active.
- If you are using PPPoE Connection for xDSL service, please uninstall the WinPoet, Broadjump, or Ethernet 300 software. meanwhile, you will need to have account ID and Password of PPPoE connection ready. (The account ID & password should be provided by your Internet Service Provider.)

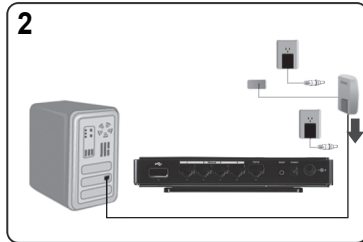
How to connect the CY-SWR1100 to your modem and computer.

Follow the directions below to connect the CY-SWR1100 to your modem and computer.

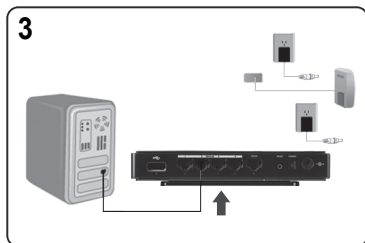
Windows OS users, please run QSW (Quick Setup Wizard) on the provided CD which will guide you through the CY-SWR1100 setup. If your computer uses Linux or a Mac OS, please follow the steps on the following page to set up the router manually.



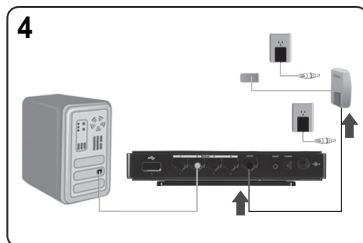
Turn off your modem.



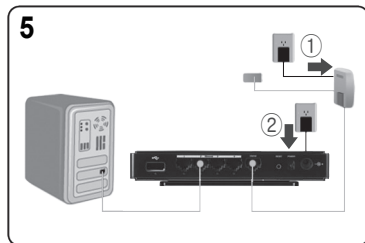
Unplug your ethernet cable from the modem.



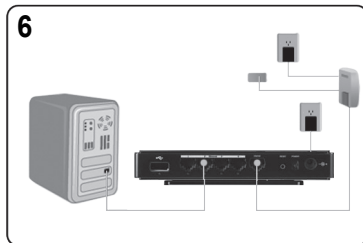
Connect this ethernet cable to one of the CY-SWR1100's four ethernet ports.



Connect the blue ethernet cable provided in this package from the device's internet port to the modem's ethernet port.



- ① Turn on your modem and wait until the boot-process is completed. (about 30 seconds)
- ② Turn on the CY-SWR1100 and wait until the boot-process is completed. (about 50 seconds)



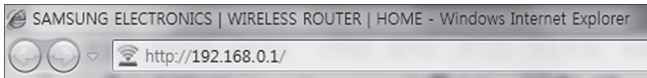
Try to access to the internet. If your computer has no access to the internet, open a web browser on the computer that is connected to the CY-SWR1100 and follow the steps on next page.

How to set up CY-SWR1100 manually.

If you are using the computer with Linux or MAC OS, you need to set up the CY-SWR1100 manually.

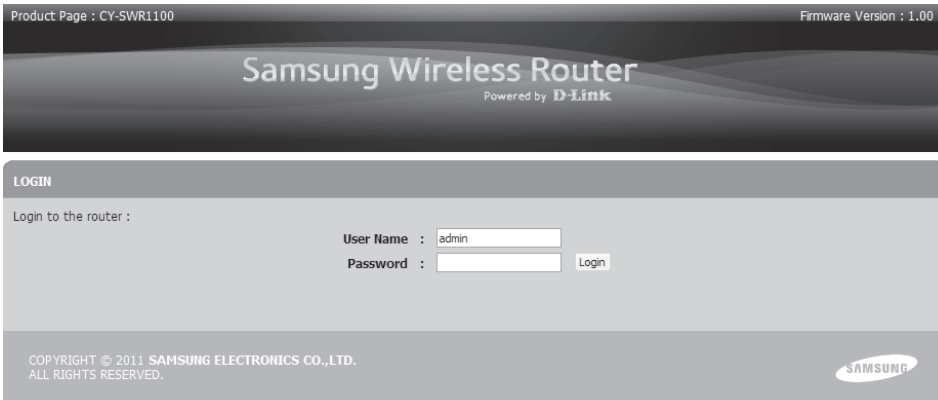
Step 1

Open the internet browser on your computer, enter the CY-SWR1100's IP address (192.168.0.1) into the address field, and then press Enter or click 'Go'.



Step 2

When the login window appears, enter "admin" in User Name field, leave the Password field blank, and then click "Login".



Step 3

Please refer to the manual on CD for details.

Router Placement

To Get the best Wireless coverage, place your router in an open area away from your computer, monitor, and speaker. Since each House is different, you may need to try rotating your router to get the best coverage.

Special features of CY-SWR1100

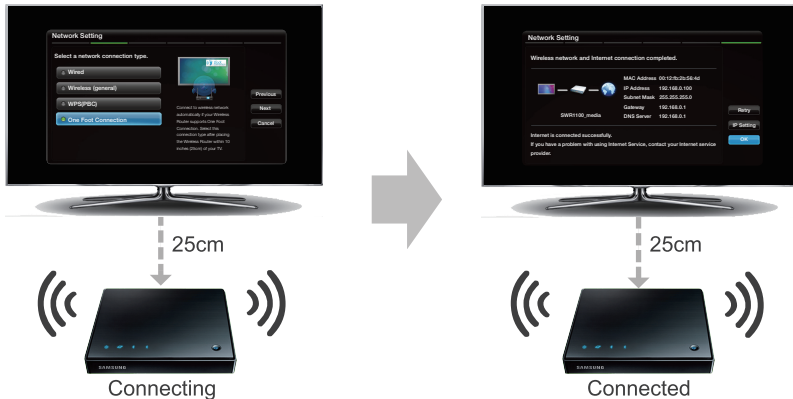


One Foot Connection

The One Foot Connection function lets you connect your One Foot Connection compliant Samsung TV/AV/Touch Control automatically to the Samsung CY-SWR1100 wireless router.

* This function is only supported by some of Samsung TV/AV/Touch Control products made in 2011 and after. Each product has a different way of using One Foot Connection. For more information, see the manual for each product.

* When WPS is disabled, OFC function will not work.



To connect a Samsung TV using One Foot Connection, follow these steps:

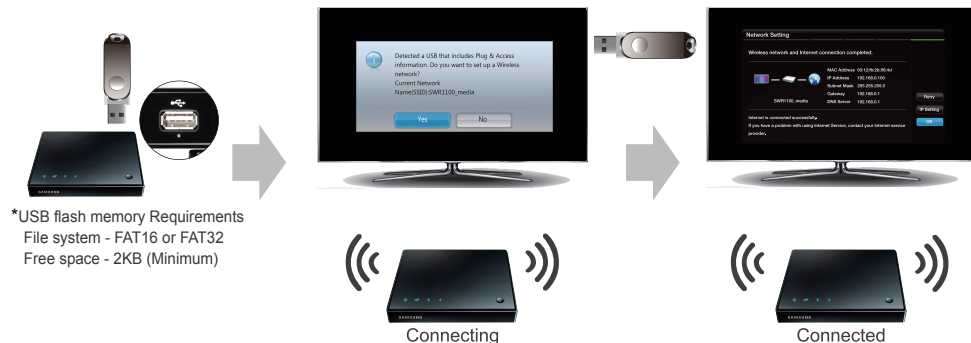
1. Turn on the Samsung wireless router and the TV.
2. Go to Network Settings screen.
(Menu → Network → Network Settings → ENTER.)
3. Select One Foot Connection, and press ENTER, then press ENTER again.
4. Place the wireless router in parallel with your TV set, and no farther away than 25cm (about 9 3/4 inches)
*Note : If One Foot Connection does not connect your TV to your router, a pop-up window appears on the screen notifying you of the failure. If you want to try using One Foot Connection again, reset the wireless router, and then try again from Step 1. You can also choose one of the other connection setup methods.
5. The network connection screen appears, and network setup is complete.
6. Move the wireless router to a desired location.
*Note : If the wireless router's settings change or you install a new wireless router, you must perform the One Foot Connection procedure again, beginning from Step 1.



Plug & Access

The Plug & Access function lets you easily connect your Plug & Access compliant Samsung TV to your Samsung wireless router by using a USB memory stick to transfer the setup information from the router to the TV.

* Plug & Access is only supported by some Samsung TVs made in 2011 and after. For more information, see the manual of the individual TV.



*USB flash memory Requirements
File system - FAT16 or FAT32
Free space - 2KB (Minimum)

To connect a Samsung TV using Plug & Access, follow these steps:

1. Turn on the Samsung wireless router and your TV.
2. Insert a USB memory stick into the USB port in your Samsung wireless router. Check the router's LED to make sure it is on (Blinking → on).
3. About a minute later, take the USB memory stick out of the router, and then insert it into a USB port on your Samsung TV. Samsung TV downloads the connection information from the USB memory stick.
4. Wait until the connection is automatically established.
*Note : If Plug & Access does not connect your TV to your wireless router, a pop-up window appears on the screen notifying you of the failure.
If you want to try using Plug & Access again, reset the AP,

disconnect the Samsung Wireless LAN adapter and then try again from Step 1. You can also choose one of the other connection setup methods.

5. The network connection screen appears, and the network setup is complete.
6. Place the wireless router in a desired location.

*Notes:

- If the wireless router's settings change or you install a new wireless router, you must perform the Plug & Access procedure again, beginning from Step 1.
- After the connection data transfer has been completed, the WPS light on the router glows continuously.



Priority QoS

Samsung wireless routers are optimized to stream HD AV to Samsung TV / BDP.

* Priority QoS is only supported by some Samsung TVs and Blu-ray players made in 2011 and after. For more information, see the manual of the individual unit.

The Priority QoS function is unique to the CY-SWR1100.

You can connect a Samsung wireless router to many devices, such as laptops, mobile phones, BD players etc.

However, when you connect a Samsung TV or Blu-ray player to a Samsung wireless router, the Samsung wireless router gives the Samsung TV or player a priority connection. This ensures your TV or player gets the fastest throughput speed and displays the highest quality streaming contents.

*Note : To activate Priority QoS, please kindly refer to user manual for details.

Technical Service

Australia & New Zealand

Australia	1300 766 870
New Zealand	0800 035 465

SAFETY INSTRUCTIONS

Please adhere to the following safety guidelines to help ensure your own personal safety and protect your system from potential damage. Any acts taken that are inconsistent with ordinary use of the product, including improper testing, etc., and those not expressly approved by Samsung may result in the loss of product warranty.

Unless expressly approved by an authorized representative of Samsung in writing, you may not and may not permit others to:

- Disassemble or reverse engineer the device or attempt to derive source code (underlying ideas, algorithms, or structure) from the device or from any other information provided by Samsung, except to the extent that this restriction is expressly prohibited by local law.
- Modify or alter the device.
- Remove from the device any product identification or other notices, including copyright notices and patent markings, if any.

To reduce the risk of bodily injury, electrical shock, fire, and damage to the device and other equipment, observe the following precautions:

Power Sources

- Observe and follow service markings.
- Do not push any objects into the openings of your device unless consistent with the authorized operation of the device. Doing so can cause a fire or an electrical shock by shorting out interior components.
- The powering of this device must adhere to the power specifications indicated for this product.
- Do not overload wall outlets and/or extension cords as this will increase the risk of fire or electrical shock.
- Do not rest anything on the power cord or on the device (unless the device is made and expressly approved as suitable for stacking).
- Position system cables and power cables carefully; route cables so that they cannot be stepped on or tripped over. Be sure that nothing rests on any cables.
- Operate the device only from the type of external power source indicated on the electrical ratings label.
- To help avoid damaging your device, be sure the voltage selection switch (if provided) on the power supply is set to match the power available at your location.
- Also be sure that attached devices are electrically rated to operate with the power available in your location.
- Use only approved power cable(s). If you have not been provided a power cable for your device or for any AC-powered option intended for your device, purchase a power cable that is approved for use in your country and is suitable for use with your device. The power cable must be rated for the device and for the voltage and current marked on the device's electrical ratings label. The voltage and current rating of the cable should be greater than the ratings marked on the device.
- To help prevent an electrical shock, plug the device and peripheral power cables into properly grounded electrical outlets. These cables are equipped with three-prong plugs to help ensure proper grounding. Do not use adapter plugs or remove the grounding prong from a cable. If you must use an extension cable, use a 3-wire cable with properly grounded plugs.
- Observe extension cable and power strip ratings. Ensure that the total ampere rating of all products plugged into the extension cable or power strip does not exceed 80 percent of the ampere ratings limit for the extension cable or power strip.
- To help protect your device from sudden, transient increases and decreases in electrical power, use a surge suppressor, line conditioner, or uninterruptible power supply (UPS).

- Do not modify power cables or plugs. Consult a licensed electrician or your power company for site modifications. Always follow your local/national wiring rules.
- When connecting or disconnecting power to hot-pluggable power supplies, if offered with your device, observe the following guidelines:
- Install the power supply before connecting the power cable to the power supply.
- Unplug the power cable before removing the power supply.
- If the system has multiple sources of power, disconnect power from the device by unplugging all power cables from the power supplies.

Servicing/Disassembling

- Do not service any product except as expressly set forth in your system documentation.
- Opening or removing covers that are marked with the triangular symbol with a lightning bolt may expose you to an electrical shock. Only a trained service technician should service components inside these compartments.
- To reduce the risk of electrical shock, never disassemble this device. None of its internal parts are user-replaceable; therefore, there is no reason to access the interior.
- Do not spill food or liquids on your system components, and never operate the device in a wet environment. If the device gets wet, see the appropriate section in your troubleshooting guide or contact your trained service provider.
- Use the device only with approved equipment.
- Move products with care; ensure that all casters and/or stabilizers are firmly connected to the system. Avoid sudden stops and uneven surfaces.

Environment

- Do not use this device near water (e.g. near a bathtub, sink, laundry tub, fish tank, in a wet basement or near a swimming pool).
- Do not use this device in areas with high humidity.
- This device must not be subjected to water or condensation.
- Keep your device away from radiators and heat sources. Also, do not block cooling vents.

Cleaning

- Always unplug the power before cleaning this device.
- Do not use liquid or aerosol cleaners of any kind. Use only compressed air that is recommended for electronic devices.
- Use a dry cloth for cleaning.

PROTECTING AGAINST ELECTROSTATIC DISCHARGE

Static electricity can harm delicate components inside your system. To prevent static damage, discharge static electricity from your body before you touch any of the electronic components, such as the microprocessor. You can do so by periodically touching an unpainted metal surface on the chassis.

You can also take the following steps to help prevent damage from electrostatic discharge (ESD):

1. When unpacking a static-sensitive component from its shipping carton, do not remove the component from the antistatic packing material until you are ready to install the component in your system. Just before unwrapping the antistatic packaging, be sure to discharge static electricity from your body.
2. When transporting a sensitive component, first place it in an antistatic container or packaging.
3. Handle all sensitive components in a static-safe area. If possible, use antistatic floor pads, workbench pads, and an antistatic grounding strap.