



WIRELESS N DUAL BAND MEDIABRIDGE

DUAL BAND USAGE

Selectable dual band frequency to fit your data transfer needs—choose either 2.4 GHz or 5 GHz

CONNECTS UP TO FOUR DEVICES

Connect up to four PCs, game consoles, and media players to your wireless network

EASY TO SET UP

Simple to set up using push-button wireless network configuration



HIGH-SPEED WIRELESS BRIDGE

The Wireless N Dual Band MediaBridge® is a high-speed wireless bridge capable of transfer speeds of up to 300 Mbps by using Wireless N and 2x2 MIMO technology. Connect it to PCs, set-top boxes, or game consoles to give them a high-speed wireless connection ideal for online gaming, streaming HD videos and music, and sharing photos and files. Additionally, the Wireless N Dual Band MediaBridge® is backward compatible with 802.11g/b/a devices.

DUAL BANDS FOR SMOOTH STREAMING

The Wireless N Dual Band MediaBridge® has dual band coverage on 2.4 GHz and 5 GHz. Selecting the 5 GHz band enables your wireless connection to avoid interference from other signals and ensures smooth video streaming or online gaming. Selecting the 2.4 GHz band provides greater device compatibility, allowing you to connect to a greater variety of devices.

SIMPLE AND SECURE SETUP

WPA/WPA2 wireless encryption is supported to provide security for your wireless connection by preventing unauthorized access. Setting this up is easy with Wi-Fi Protected Setup (WPS) push-button configuration; just push a button on the Wireless N Dual Band MediaBridge® to instantly configure and secure your wireless connection automatically. This allows you to surf the web and do your online shopping with the confidence that unauthorized users cannot view your wireless traffic.

CONVENIENT PORT-BASED QoS

The DAP-1513 device supports port-based QoS, allowing you to set the priority of your connected devices by simply plugging them into the matching port. For example, you can plug your set-top box into the Highest priority port to ensure that you can stream video smoothly over the Internet, even when you are busy downloading files on your PC.

FEATURES

- IEEE 802.11n, 802.11g, 802.11b, and 802.11a compliant
- Works as a wireless bridge
- Wireless N Dual Band technology for superior wireless performance²
- 5 GHz technology for enhanced media experience
- WPS (Wi-Fi® Protected Setup™) for simple push-button wireless network configuration
- Supports secure wireless encryption using WPA™ or WPA2™
- Supports port-based QoS
- 4-port Fast Ethernet switch

BENEFITS

- Capable of transferring data at speeds of up to 300 Mbps using 802.11n wireless standard.
- Can provide wireless connection for up to four Ethernet-enabled devices such as game consoles, Internet TVs, and DVRs

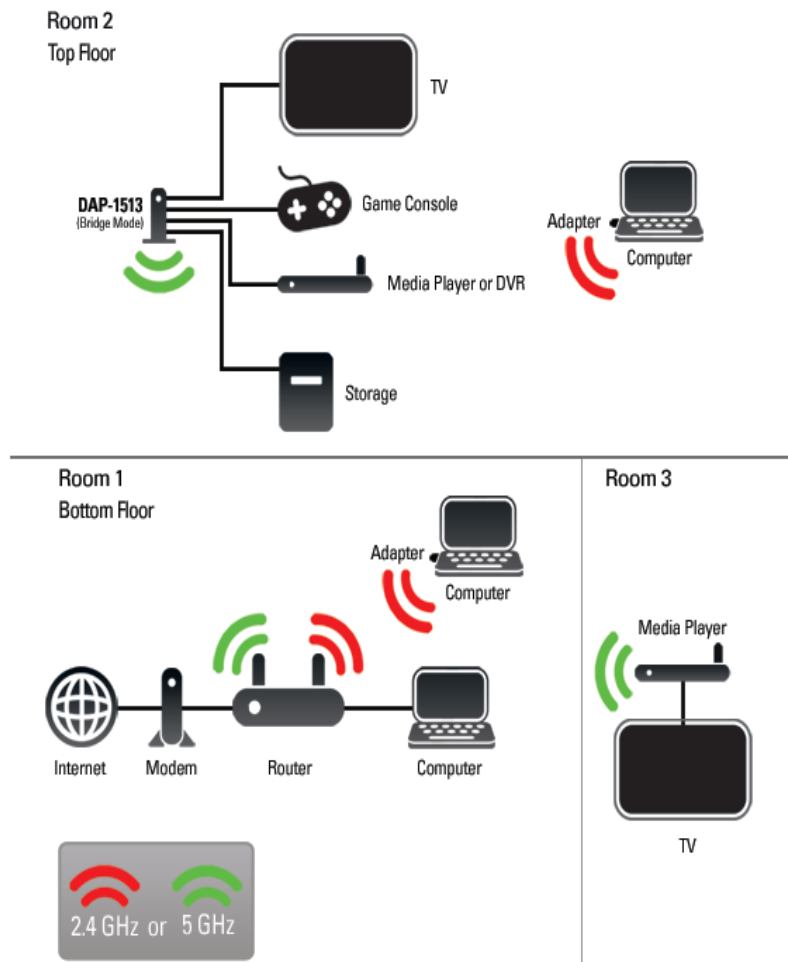
THINK GREEN

While this may look like your average media bridge, it's not. This is a D-Link Green™ MediaBridge®, which is as good for your wallet as it is for the environment. The DAP-1513 is designed to conserve energy, protect our environment from harmful substances and reduce waste by using recyclable packaging. To learn more, visit www.dlinkgreen.com.

D-LINK GREEN™ TECHNOLOGY

- Power saving by link status
- Power saving by cable length
- Power saving by wireless LAN scheduling

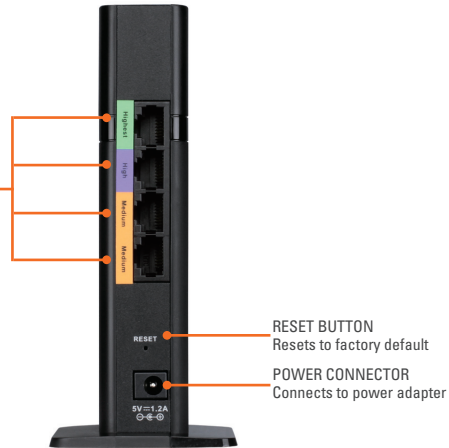
YOUR NETWORK SETUP



WHAT THIS PRODUCT DOES

The Wireless N Dual Band MediaBridge® allows you to create a bridge to connect up to 4 devices to your home wireless network. When connected, it provides a high-speed connection for your devices, making it great for sharing pictures, music, viewing streaming movies, and online gaming.

LAN PORTS WITH PORT-BASED QoS
Connect to your PCs, game consoles, or other devices



TECHNICAL SPECIFICATIONS

STANDARDS

- IEEE 802.11n
- IEEE 802.11g
- IEEE 802.11b
- IEEE 802.11a
- IEEE 802.3
- IEEE 802.3u

DEVICE INTERFACES

- 802.11n/g/b/a wireless LAN
- Four 10/100 Fast Ethernet Ports

ANTENNA TYPE

- Integrated

SECURITY

- WPA & WPA2 (Wi-Fi Protected Access)
- 64/128-bit WEP
- Wi-Fi Protected Setup (WPS) PBC/PIN

QoS

- Port-based QoS

LEDs

- Power
- Wireless

MINIMUM SYSTEM REQUIREMENTS

- Computer with:
 - Windows® 7³, Windows Vista®³, Windows® XP SP2³, or Mac OS® X⁴ (v10.4)
 - Internet Explorer® 6 or Mozilla® Firefox 3.0
 - Network Interface Card
 - CD-ROM Drive
 - Cable or DSL Modem
 - Subscription to an Internet Service

OPERATING TEMPERATURE

- 30 to 104° F (0 to 40° C)

OPERATING HUMIDITY

- 10% to 95% non-condensing

DIMENSIONS (L x W x H)

- 142 x 122 x 29 mm (5.6 x 4.8 x 1.14 inches)

CERTIFICATIONS

- CE
- C-TICK
- FCC
- IC
- Wi-Fi Certified

¹ Actual data throughput will vary. Network conditions and environmental factors including volume of network traffic, and network overhead, lower actual data throughput.

² Maximum wireless signal rate derived from IEEE Standard 802.11 specifications. Actual data throughput will vary. Network conditions and environmental factors, including volume of network traffic, building materials and construction, and network overhead, lower actual data throughput rate. Environmental factors will adversely affect wireless signal range.

³ The software included with this product is not Mac-compatible.

⁴ Latest software and documentation are available at <http://support.dlink.com>.

All references to speed and range are for comparison purposes only. Product specifications, size, and shape are subject to change without notice, and actual product appearance may differ from that depicted on the package. See inside package for warranty details.



D-Link Corporation
No. 289 Xinhu 3rd Road, Neihu, Taipei 114, Taiwan
Specifications are subject to change without notice.
D-Link is a registered trademark of D-Link Corporation and its overseas subsidiaries.
All other trademarks belong to their respective owners.
©2011 D-Link Corporation. All rights reserved.
Release 01 (March 2011)