

A large, light gray watermark of the D-link logo is positioned diagonally across the page, starting from the top left and extending towards the bottom right. The logo consists of a stylized 'D' with a vertical bar through it, forming a shape similar to a speech bubble or a camera lens.

**D-Link**<sup>®</sup>

FULL HD ULTRA-WIDE VIEW WI-FI CAMERA  
DCS-2630L

**QUICK  
INSTALLATION  
GUIDE**

# CONTENTS OF PACKAGING



**FULL HD ULTRA-WIDE VIEW WI-FI CAMERA**  
DCS-2630L



**POWER ADAPTER**



**MOUNTING KIT**



**QUICK INSTALL CARD**



If any of these items are missing from your packaging, contact your reseller.

# SYSTEM REQUIREMENTS

- 802.11ac/n/g router (a D-Link Cloud Router is recommended)
- A broadband Internet connection
- iPhone, iPad, Android, or Windows smartphone or tablet (please refer to the mobile app's store page to check whether your device is compatible)

## PRODUCT SETUP

### SETTING UP YOUR CAMERA WITH MYDLINK LITE

Please follow the instructions below to set up your mydlink camera.

**Step 1:** On your mobile device, download mydlink Lite by searching for **mydlink Lite** in the iTunes App Store, Google Play, or the Windows Store.



**Step 2:** Launch the mydlink Lite app and create a new account or sign in to your existing account.

When you are asked to scan a QR code, use the code on the Quick Install Card in your package, or on the label attached to your device.

Congratulations, your DCS-2630L is now ready to use! Be sure to check the **mydlink.com** website periodically for the latest firmware updates to keep your product secure and up to date with the latest features.

**Note:** If you experience issues registering this camera with your mydlink account, or if you purchased an open box or resold unit, perform a hard reset by pressing and holding the reset button on the device for 10 seconds while the device is powered on. **If you are returning the device to the place of purchase, please perform the hard reset procedure to clear the device of any personal data.**

# PRODUCT SETUP

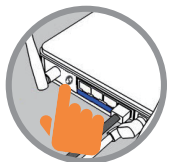
## ZERO CONFIGURATION SETUP

If you have a **D-Link Cloud Router**, you can take advantage of Zero Configuration Setup. This feature configures your camera's settings for you and adds it to your mydlink account automatically.



### Step 1:

Press the WPS button on the camera for 3 seconds. The WPS LED will start blinking.



### Step 2:

Press the WPS button on your Cloud Router within 120 seconds. The DCS-2630L will automatically create a wireless connection to your router and automatically reboot.



### Step 3:

From any computer, open a web browser, go to **<http://www.mydlink.com>** and log in to your account. Click on the device name when the new device notification appears to add the camera to your account.

## mydlink PORTAL

After registering your DCS-2630L camera with a mydlink account in the mydlink Lite mobile app, you will be able to remotely access your camera from the mydlink website.



### Step 1:

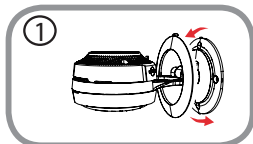
Open Internet Explorer and go to **[www.mydlink.com](http://www.mydlink.com)**, then sign into mydlink.

### Step 2:

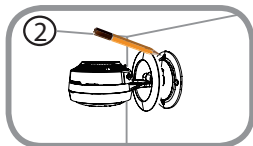
Select your camera from the device list, and your camera's Live View will appear.

# MOUNTING THE CAMERA

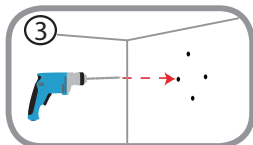
Please refer to the steps below to assist you with mounting the camera. It is recommended that you configure the camera before mounting.

**Step 1:**

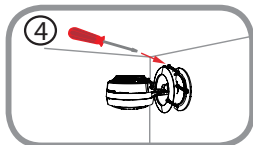
Rotate the camera base cover counterclockwise, then lift it to expose the mounting holes.

**Step 2:**

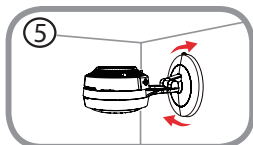
Place the camera base where you want to position the camera and use a pencil to mark the holes.

**Step 3:**

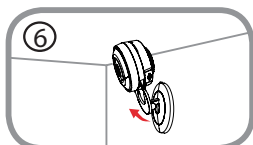
Depending on the material of the wall or ceiling, use proper tools to drill four holes 25mm deep with a 6mm drill bit where you marked. If the wall is made out of concrete, drill the holes first, then insert the plastic anchors to support the screws.

**Step 4:**

Place the camera base over the holes that are in the wall. Make sure to align the camera base holes with the holes in the wall. Use the supplied screws to attach the camera to the surface of the wall.

**Step 5:**

Reattach the base cover and turn it clockwise to lock it in place.

**Step 6:**

Adjust the angle of the camera as desired.

# TROUBLESHOOTING

## SETUP AND CONFIGURATION PROBLEMS

### 1. WHY IS THE CAMERA VIEW HAZY OR BRIGHT WHEN USING NIGHT VISION MODE?

The IR night vision lights on the camera may be reflecting off of a nearby surface or window. Try repositioning your camera to avoid reflections or glare.

### 2. WHAT CAN I DO IF I FORGET MY CAMERA PASSWORD?

If you forget your camera password, you will need to perform a hard reset of your camera. This process will change all your settings back to the factory defaults.

To reset your camera, please use an unfolded paperclip to press and hold the RESET button for at least 10 seconds while your camera is plugged in.

## TECHNICAL SUPPORT

You can find software updates and user documentation on the D-Link website.

**Tech Support for customers in****Australia:**

Tel: 1300-700-100  
24/7 Technical Support  
Web: <http://www.dlink.com.au>  
E-mail: [support@dlink.com.au](mailto:support@dlink.com.au)

**India:**

Tel: +91-832-2856000  
Toll Free 1800-233-0000  
Web: [www.dlink.co.in](http://www.dlink.co.in)  
E-Mail: [helpdesk@in.dlink.com](mailto:helpdesk@in.dlink.com)

**Singapore, Thailand, Indonesia, Malaysia, Philippines, Vietnam:**

Singapore - [www.dlink.com.sg](http://www.dlink.com.sg)  
Thailand - [www.dlink.co.th](http://www.dlink.co.th)  
Indonesia - [www.dlink.co.id](http://www.dlink.co.id)  
Malaysia - [www.dlink.com.my](http://www.dlink.com.my)  
Philippines - [www.dlink.com.ph](http://www.dlink.com.ph)  
Vietnam - [www.dlink.com.vn](http://www.dlink.com.vn)

**Korea:**

Tel : +82-2-2028-1810  
Monday to Friday 9:00am to 6:00pm  
Web : <http://d-link.co.kr>  
E-mail : [g2b@d-link.co.kr](mailto:g2b@d-link.co.kr)

**New Zealand:**

Tel: 0800-900-900  
24/7 Technical Support  
Web: <http://www.dlink.co.nz>  
E-mail: [support@dlink.co.nz](mailto:support@dlink.co.nz)

**South Africa and Sub Sahara Region:**

Tel: +27 12 661 2025  
08600 DLINK (for South Africa only)  
Monday to Friday 8:30am to 9:00pm  
South Africa Time  
Web: <http://www.d-link.co.za>  
E-mail: [support@d-link.co.za](mailto:support@d-link.co.za)

**D-Link Middle East - Dubai, U.A.E.**

Plot No. S31102,  
Jebel Ali Free Zone South,  
P.O.Box 18224, Dubai, U.A.E.  
Tel: +971-4-8809022  
Fax: +971-4-8809066 / 8809069  
Technical Support: +971-4-8809033  
General Inquiries: [info.me@dlinkmea.com](mailto:info.me@dlinkmea.com)  
Tech Support: [support.me@dlinkmea.com](mailto:support.me@dlinkmea.com)

**Egypt**

1, Makram Ebeid Street -  
City Light Building - floor 5  
Nascity - Cairo, Egypt  
Tel.: +2 02 23521593 - +2 02 23520852  
Technical Support: +2 02 26738470  
General Inquiries: [info.eg@dlinkmea.com](mailto:info.eg@dlinkmea.com)  
Tech Support: [support.eg@dlinkmea.com](mailto:support.eg@dlinkmea.com)

**Kingdom of Saudi Arabia**

Office # 84 ,  
Al Khaleej Building ( Mujamathu Al-Khaleej)  
Opp. King Fahd Road, Olaya  
Riyadh - Saudi Arabia  
Tel: +966 1121 70008  
Technical Support:  
+966 1121 70009  
General Inquiries: [info.sa@dlinkmea.com](mailto:info.sa@dlinkmea.com)  
Tech Support: [support.sa@dlinkmea.com](mailto:support.sa@dlinkmea.com)

**Pakistan**

Islamabad Office:  
61-A, Jinnah Avenue, Blue Area,  
Suite # 11, EBC, Saudi Pak Tower,  
Islamabad - Pakistan  
Tel.: +92-51-2800397, 2800398  
Fax: +92-51-2800399

## TECHNICAL SUPPORT

**Karachi Office:**

D-147/1, KDA Scheme # 1,  
Opposite Mudassir Park, Karsaz Road,  
Karachi – Pakistan

Phone: +92-21-34548158, 34326649

Fax: +92-21-4375727

Technical Support: +92-21-34548310,  
34305069

General Inquiries: info.pk@dlinkmea.  
com

Tech Support: support.pk@dlinkmea.  
com

**Iran**

Unit 5, 5th Floor, No. 20, 17th Alley ,  
Bokharest St. , Argentine Sq. ,

Tehran IRAN

Postal Code : 1513833817

Tel: +98-21-88880918,19

+98-21-88706653,54

General Inquiries: info.ir@dlinkmea.com

Tech Support: support.ir@dlinkmea.com

**Morocco**

M.I.T.C

Route de Nouaceur angle RS et CT 1029

Bureau N° 312 ET 337

Casablanca , Maroc

Phone : +212 663 72 73 24

Email: support.na@dlinkmea.com

**Lebanon RMA center**

Dbayeh/Lebanon

PO Box:901589

Tel: +961 4 54 49 71 Ext:14

Fax: +961 4 54 49 71 Ext:12

Email: taoun@dlinkmea.com

**Bahrain**

Technical Support: +973 1 3332904

**Kuwait:**

Technical Support: + 965 22453939 /  
+965 22453949

**Türkiye**

Büyükdere Cad. Ferro Plaza No:155

D: 1 K: 1 Zincirlikuyu / Istanbul

Tel: +90 (212) 289-56-59

Email: info.tr@dlink.com.tr

**ישראל**

מטלון סנטר

רח' המגשימים 20

קרית מטלון, פ"ת 49348, ת"ד 7060

טל: 03-9215173

טל: 073-7962797

דוא"ל כללי: info@dlink.co.il

דוא"ל תמיכה: support@dlink.co.il