


http://192.168.0.20/ 192.168.0.20

# D-Link DCS-3010 SECURICAM

1 2 3 4



DCS-3010 2013/03/03 23:28

Firmware version v1.00

The image shows a web browser window displaying the D-Link DCS-3010 camera's web interface. The browser's address bar shows the URL 'http://192.168.0.20/'. The interface has a dark header with the 'D-Link' logo and 'DCS-3010' model name, and the 'SECURICAM' logo on the right. Below the header is a toolbar with various icons for camera functions like zoom, pan, and mute. On the left side, there is a vertical control panel with a directional pad, buttons for zoom in/out, a pan/tilt control, a dropdown menu labeled 'Select one --', and three checkboxes. The main area is a large video window showing a live feed of an office with desks, computers, and a person. The video window has 'DCS-3010' and the timestamp '2013/03/03 23:28' in the top corners. At the bottom left of the interface, it says 'Firmware version v1.00'.

Browser address bar: <http://192.168.0.20/setup/ipsetting.html> | IP Settings

**D-Link** DCS-3010 **SECURICAM**

192.168.0.20

**System Overview**

- Audio and Video
- Network**
  - IP Settings
  - Port & Access Name Settings
  - Dynamic DNS
  - HTTPS
  - Access List
  - Advanced Settings
- Event Management
- Recording
- PTZ Control
- System

**IP Settings**

**IPv4**

- LAN
  - Get IP address automatically (DHCP)
  - Use fixed IP address
- PPPoE

The device is configuring now. Your browser will reconnect to <http://192.168.0.20:80/>. If the connection fails, please manually enter the above IP address in your browser.

Default router	192.168.20.254
Primary DNS	168.95.1.1
Secondary DNS	168.95.192.1
Primary WINS server	
Secondary WINS server	

Enable UPnP presentation  
 Enable UPnP port forwarding

**Save**

- System Overview
- Audio and Video
  - Video Settings
  - Image Settings
  - Audio Settings
- Network
- Event Management
- Recording
- PTZ Control
- System

System Overview

Device Information

IP address	192.168.20.9
Link-local address	169.254.89.21
Current firmware version	v1.00.05
Current firmware date	20 Feb 2013
MAC address	F0:7D:68:05:E2:90
Connect client	0

Time and Date

Current system time	3 Mar 2013 23:44:54
System up time	0 Days, 0 Hours, 21 Minutes
Time mode	Manually

Service Status

Service	Enabled / Disabled	Protocol	Server port
HTTP	Enable	TCP	80
Secondary HTTP	Enable	TCP	8080
HTTPS	Disable	TCP	443
FTP	Enable	TCP	21
RTSP	Enable	TCP	554
UPnP presentation	Enable	-	-
UPnP port forwarding	Disable	-	-
802.1x	Disable	-	-
CoS	Disable	-	-
QoS / DSCP	Disable	-	-
SNMP	Disable	-	-
DDNS	Disable	-	-

Service Status

Service	Enabled / Disabled	Protocol	Server port
HTTP	Enable	TCP	80
Secondary HTTP	Enable	TCP	8080
HTTPS	Disable	TCP	443
FTP	Enable	TCP	21
RTSP	Enable	TCP	554
UPnP presentation	Enable	-	-
UPnP port forwarding	Disable	-	-
802.1x	Disable	-	-
CoS	Disable	-	-
QoS / DSCP	Disable	-	-
SNMP	Disable	-	-
DDNS	Disable	-	-
Access list	Disable	-	-

Stream Status

Stream number	Codec type	Resolution	Max Frame Rate	Bitrate / Quality
Stream 1	H.264	1280x800	30	Excellent
Stream 2	H.264	1280x800	30	2 Mbps
Stream 3	H.264	1280x800	30	1 Mbps
Stream 4	H.264	1280x800	30	1 Mbps

Recent Logs

```
[ 2013/03/03 23:40:56 ] 192.168.20.8 login by admin.
[ 2013/03/03 23:37:17 ] 192.168.20.8 login by admin.
[ 2013/03/03 23:30:19 ] 192.168.20.8 login by admin.
[ 2013/03/03 23:24:37 ] 192.168.0.8 login by admin.
[ 2013/02/21 11:55:55 ] 192.168.0.17 login by admin.
[ 2013/02/21 09:30:53 ] 192.168.0.9 login by admin.
[ 2013/02/21 09:26:19 ] 192.168.0.9 login by admin.
[ 2012/09/21 18:11:30 ] 192.168.0.9 login by admin.
[ 2012/09/21 18:09:59 ] 192.168.0.9 login by admin.
```

Browser address bar: <http://192.168.20.9/setup/video.html> Video Settings

**D-Link** **DCS-3010** **SECURICAM**

192.168.20.9

**System Overview**

- Audio and Video**
  - Video Settings
  - Image Settings
  - Audio Settings
- Network**
- Event Management**
- Recording**
- PTZ Control**
- System**

**Video Settings**

Video Options: Viewing Window | Sensor Settings

**Video Quality Settings for Stream 1**

- H.264
  - Frame size: 1280x800
  - Maximum frame rate: 30 fps
  - Intra frame period: 1 S
  - Video quality:
    - Constant bit rate: 2 Mbps
    - Fixed quality: Excellent
- MPEG-4
- JPEG

**Video Quality Settings for Stream 2**

- H.264
  - Frame size: 1280x800
  - Maximum frame rate: 30 fps
  - Intra frame period: 1 S
  - Video quality:
    - Constant bit rate: 2 Mbps
    - Fixed quality: Good
- MPEG-4
- JPEG

**Video Quality Settings for Stream 3**

- H.264
  - Frame size: 1280x800
  - Maximum frame rate: 30 fps
  - Intra frame period: 1 S
  - Video quality:
    - Constant bit rate: 1 Mbps
    - Fixed quality: Good
- MPEG-4
- JPEG

Browser: http://192.168.20.9/setup/imagesetting.html | Image Settings

**D-Link** DCS-3010 **SECURICAM**

192.168.20.9

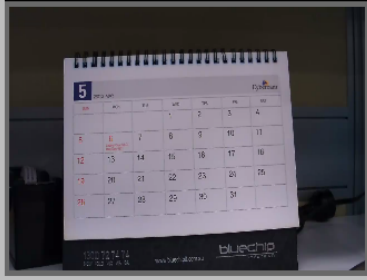
**System Overview**

- Audio and Video
  - Video Settings
  - Image Settings
  - Audio Settings
- Network
- Event Management
- Recording
- PTZ Control
- System

**Image Settings**

Live Video

DCS-3010 2013/03/03 23:47



**Image Settings**

Color: Color

Power line frequency: 50 Hz

Iris mode: Fixed

Video orientation:
  Flip  
 Mirror

White balance: Auto

Overlay title and time stamp on video

Privacy Mask

**Image Settings (Profile 1)**

Brightness: +0

Saturation: +0

Contrast: +0

Sharpness: +0

Status of profiles: This function is disabled

Profile 2

Browser: http://192.168.20.9/setup/audio\_settings.html | Audio Settings

**D-Link** DCS-3010 **SECURICAM**

192.168.20.9

**System Overview**

- Audio and Video
  - Video Settings
  - Image Settings
  - Audio Settings
- Network
- Event Management
- Recording
- PTZ Control
- System

**Audio Settings**

**Audio Settings**

Mute

Microphone input gain: 0 dB

Audio type:

- AAC:
- G711:

G711 bit rate: 16 Kbps

Save

Browser address bar: <http://192.168.20.9/setup/ipsetting.html> | IP Settings

**D-Link**      **DCS-3010**      **SECURICAM**

192.168.20.9

**System Overview**

- Audio and Video
- Network**
  - IP Settings
  - Port & Access Name Settings
  - Dynamic DNS
  - HTTPS
  - Access List
  - Advanced Settings
- Event Management
- Recording
- PTZ Control
- System

**IP Settings**

**IPv4**

- LAN
  - Get IP address automatically (DHCP)
  - Use fixed IP address
    - IP address: 192.168.20.9
    - Subnet mask: 255.255.255.0
    - Default router: 192.168.20.254
    - Primary DNS: 168.95.1.1
    - Secondary DNS: 168.95.192.1
    - Primary WINS server:
    - Secondary WINS server:
- PPPoE

Enable UPnP presentation

Enable UPnP port forwarding

Save

- System Overview
- Audio and Video
- Network
  - IP Settings
  - Port & Access Name Settings
  - Dynamic DNS
  - HTTPS
  - Access List
  - Advanced Settings
- Event Management
- Recording
- PTZ Control
- System

Port & Access Name Settings

**HTTPS**

HTTPS port: 443

**FTP**

FTP port: 21

**HTTP**

Authentication: Basic

HTTP port: 80

Secondary HTTP port: 8080

Access name for stream 1: video1.mjpg

Access name for stream 2: video2.mjpg

Access name for stream 3: video3.mjpg

Access name for stream 4: video4.mjpg

**RTSP Streaming**

Authentication: Disable

Access name for stream 1: live1.sdp

Access name for stream 2: live2.sdp

Access name for stream 3: live3.sdp

Access name for stream 4: live4.sdp

RTSP port: 554

RTP port for video: 5556

RTCP port for video: 5557

RTP port for audio: 5558

RTCP port for audio: 5559

**Multicast**

Enable multicast for stream 1

Multicast group address: 239.128.1.99

Multicast video port: 5560

Multicast RTCP video port: 5561

Multicast audio port: 5562

Multicast RTCP audio port: 5563

Multicast TTL [1-255]: 15

Enable multicast for stream 2

Multicast group address: 239.128.1.100

Multicast video port: 5564

Multicast RTCP video port: 5565

Multicast audio port: 5562

Multicast RTCP audio port: 5563

Multicast TTL [1-255]: 15

Enable multicast for stream 3

Multicast TTL [1-255]: 15

Enable multicast for stream 2

Multicast group address: 239.128.1.100

Multicast video port: 5564

Multicast RTCP video port: 5565

Multicast audio port: 5562

Multicast RTCP audio port: 5563

Multicast TTL [1-255]: 15

Enable multicast for stream 3

Multicast group address: 239.128.1.101

Multicast video port: 5568

Multicast RTCP video port: 5569

Multicast audio port: 5562

Multicast RTCP audio port: 5563

Multicast TTL [1-255]: 15

Enable multicast for stream 4

Multicast group address: 239.128.1.102

Multicast video port: 5572

Multicast RTCP video port: 5573

Multicast audio port: 5562

Multicast RTCP audio port: 5563

Multicast TTL [1-255]: 15

Save



Browser address bar: <http://192.168.20.9/setup/dynamicdns.html> DDNS

**D-Link** DCS-3010 **SECURICAM**

192.168.20.9

**System Overview**

- Audio and Video
- Network**
  - IP Settings
  - Port & Access Name Settings
  - Dynamic DNS
  - HTTPS
  - Access List
  - Advanced Settings
- Event Management
- Recording
- PTZ Control
- System

**Dynamic DNS**

**DDNS Settings**

- Enable DDNS
- Server name: [www.dlinkddns.com\(Free\)](http://www.dlinkddns.com)
- Host name: [Dyndns.org\(Dynamic\)](http://Dyndns.org)  
[Dyndns.org\(Custom\)](http://Dyndns.org)
- User name: \_\_\_\_\_
- Password: \_\_\_\_\_
- Confirm password: \_\_\_\_\_
- Status: dis-connected

Save

Browser address bar: <http://192.168.20.9/setup/https.html> HTTPS

**D-Link** **DCS-3010** **SECURICAM**

192.168.20.9

**System Overview**

- Audio and Video
- Network**
  - IP Settings
  - Port & Access Name Settings
  - Dynamic DNS
  - HTTPS**
  - Access List
  - Advanced Settings
- Event Management
- Recording
- PTZ Control
- System

**HTTPS**

**Enable HTTPS**

Enable HTTPS secure connection

Save

**Create and Install Certificate Method**

- Create self-signed certificate automatically
- Create self-signed certificate manually
- Create certificate request and install

**Certificate Information**

Status: Not installed

Property Remove

Browser address bar: <http://192.168.20.9/setup/accesslist.html> Access List

**D-Link** **DCS-3010** **SECURICAM**

192.168.20.9

**System Overview**

- Audio and Video
- Network**
  - IP Settings
  - Port & Access Name Settings
  - Dynamic DNS
  - HTTPS
  - Access List
  - Advanced Settings
- Event Management
- Recording
- PTZ Control
- System

**Access List**

**General Settings**

Maximum number of concurrent streaming connection(s) limited to  [View Information](#)

Enable access list filtering

[Save](#)

**Filter Type**

Allow  Deny

[Save](#)

**Filter**

IPv4 Access List

[Add](#) [Delete](#)

**Administrator IP Address**

Always allow the IP address to access this device

http://192.168.20.9/setup/advancedsettings.html

Advanced Settings

System Overview

- Audio and Video
- Network
  - IP Settings
  - Port & Access Name Settings
  - Dynamic DNS
  - HTTPS
  - Access List
  - Advanced Settings
- Event Management
- Recording
- PTZ Control
- System

Advanced Settings

SNMP Configuration

- Enable SNMPv1, SNMPv2c
  - Read / Write community: write
  - Read only community: public
- Enable SNMPv3
  - Read / Write Security name: write
  - Authentication type: MD5
  - Authentication password: [input]
  - Encryption password: [input]
  - Read only security name: public
  - Authentication type: MD5
  - Authentication password: [input]
  - Encryption password: [input]

Save

IEEE 802.1x

- Enable IEEE 802.1x
- EAP method: EAP-TLS
- Identity: [input]
- Private key password: [input]
- CA certificate: [input] Browse... Upload
- Status: no file Remove
- Client certificate: [input] Browse... Upload
- Status: no file Remove
- Client private key: [input] Browse... Upload
- Status: no file Remove

CoS

- Enable CoS

Browser address bar: <http://192.168.20.9/setup/advancedsettings.html> | Page Title: Advanced Settings

**D-Link** DCS-3010 **SECURICAM**

192.168.20.9

**System Overview**

- Audio and Video
- Network**
  - IP Settings
  - Port & Access Name Settings
  - Dynamic DNS
  - HTTPS
  - Access List
  - Advanced Settings
- Event Management
- Recording
- PTZ Control
- System

**Advanced Settings**

**SNMP Configuration**

- Enable SNMPv1, SNMPv2c
- Enable SNMPv3

Save

**IEEE 802.1x**

- Enable IEEE 802.1x

**CoS**

- Enable CoS
- VLAN ID: 4095
- Live Video: 0
- Event / Alarm: 0
- Management: 0

**QoS / DSCP**

- Enable QoS / DSCP
- Live Video: 0
- Event / Alarm: 0
- Management: 0

Save

http://192.168.20.9/setup/motion.html Motion Detection

**D-Link** DCS-3010 **SECURICAM**

192.168.20.9

System Overview

- Audio and Video
- Network
- Event Management
  - Motion Detection
  - Tamper Detection
  - Event Settings
- Recording
- PTZ Control
- System

Motion Detection

Motion Settings

Enable motion detection

DCS-3010 2013/03/03 23:51:03

Window name: Door

Sensitivity: 25 %

Percentage: 46 %

New Save

Profile

http://192.168.20.9/setup/tamperproof.html Tamper Detection

**D-Link** DCS-3010 **SECURICAM**

192.168.20.9

System Overview

- Audio and Video
- Network
- Event Management
  - Motion Detection
  - Tamper Detection
  - Event Settings
- Recording
- PTZ Control
- System

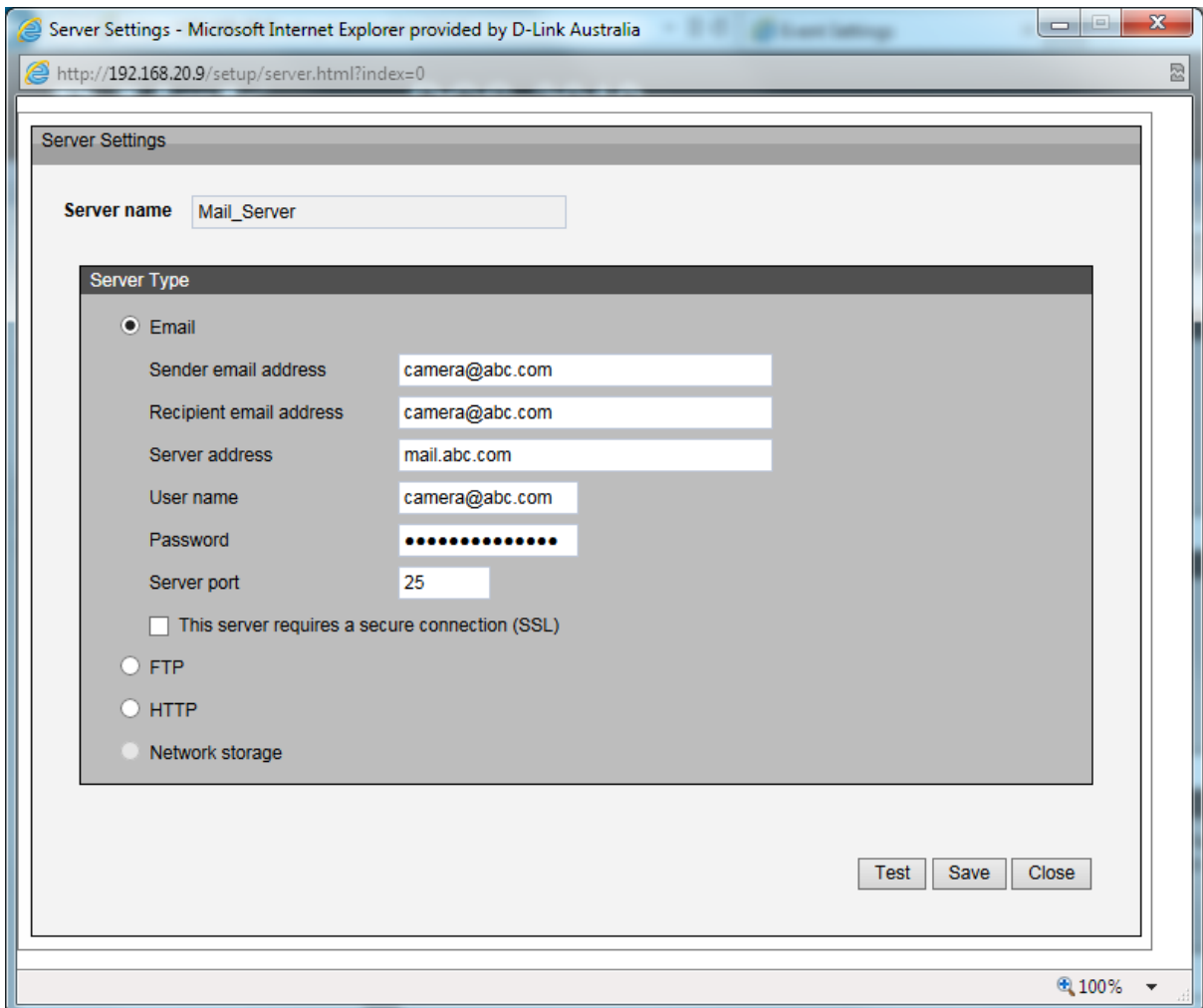
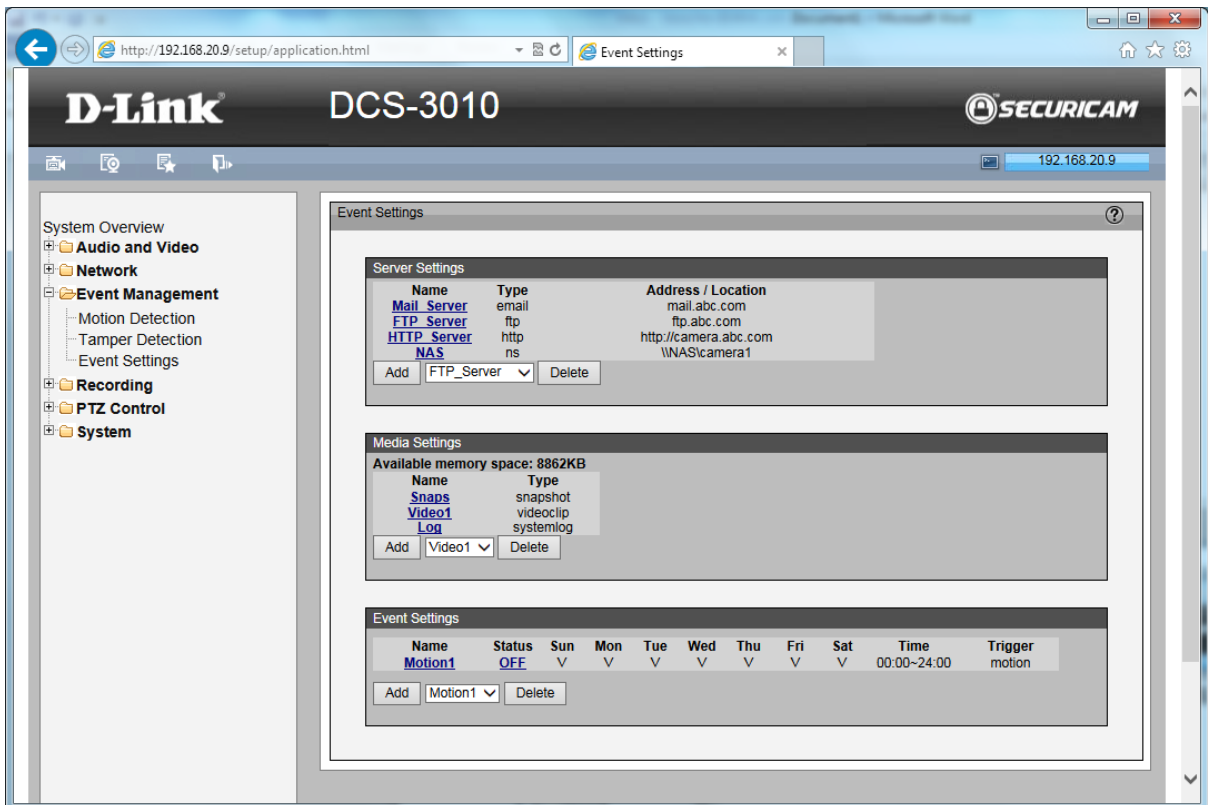
Tamper Detection

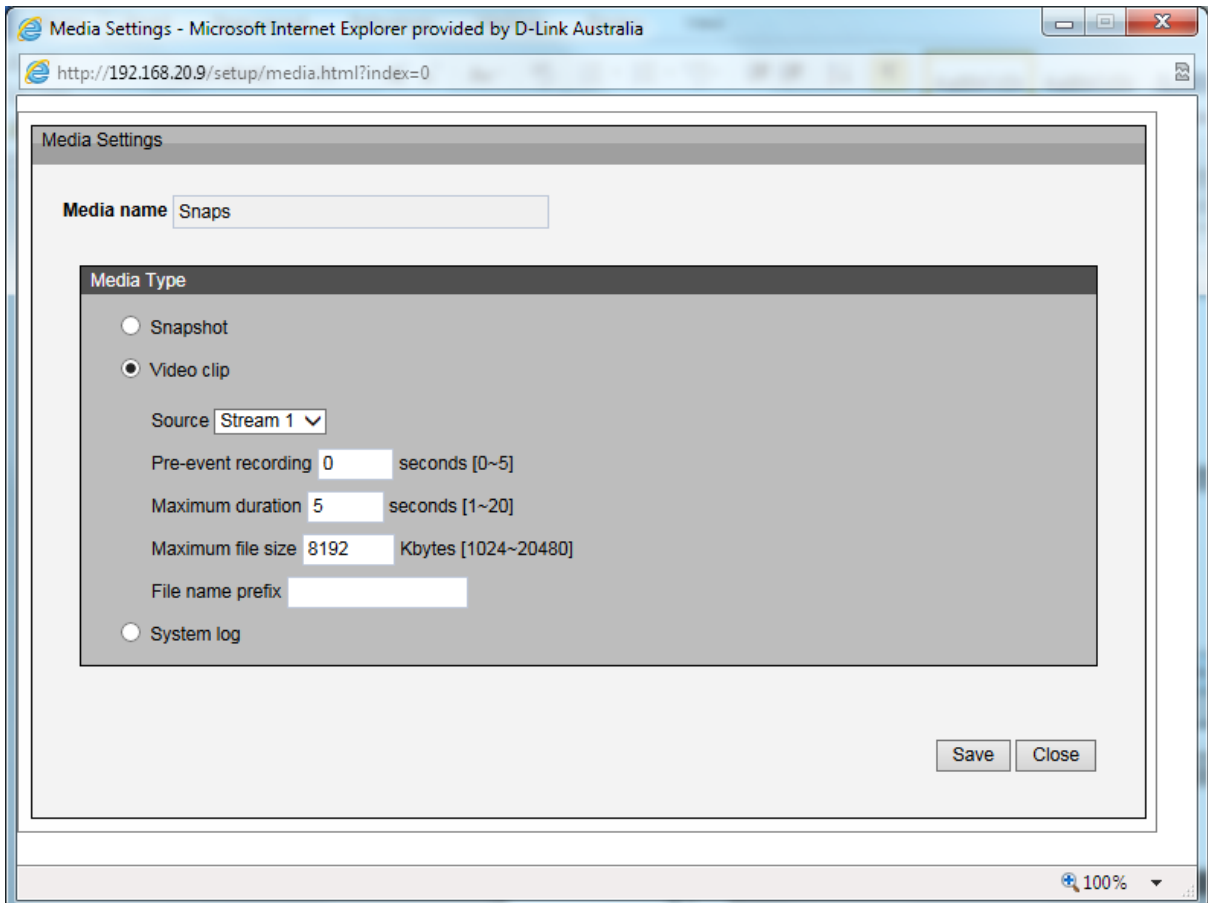
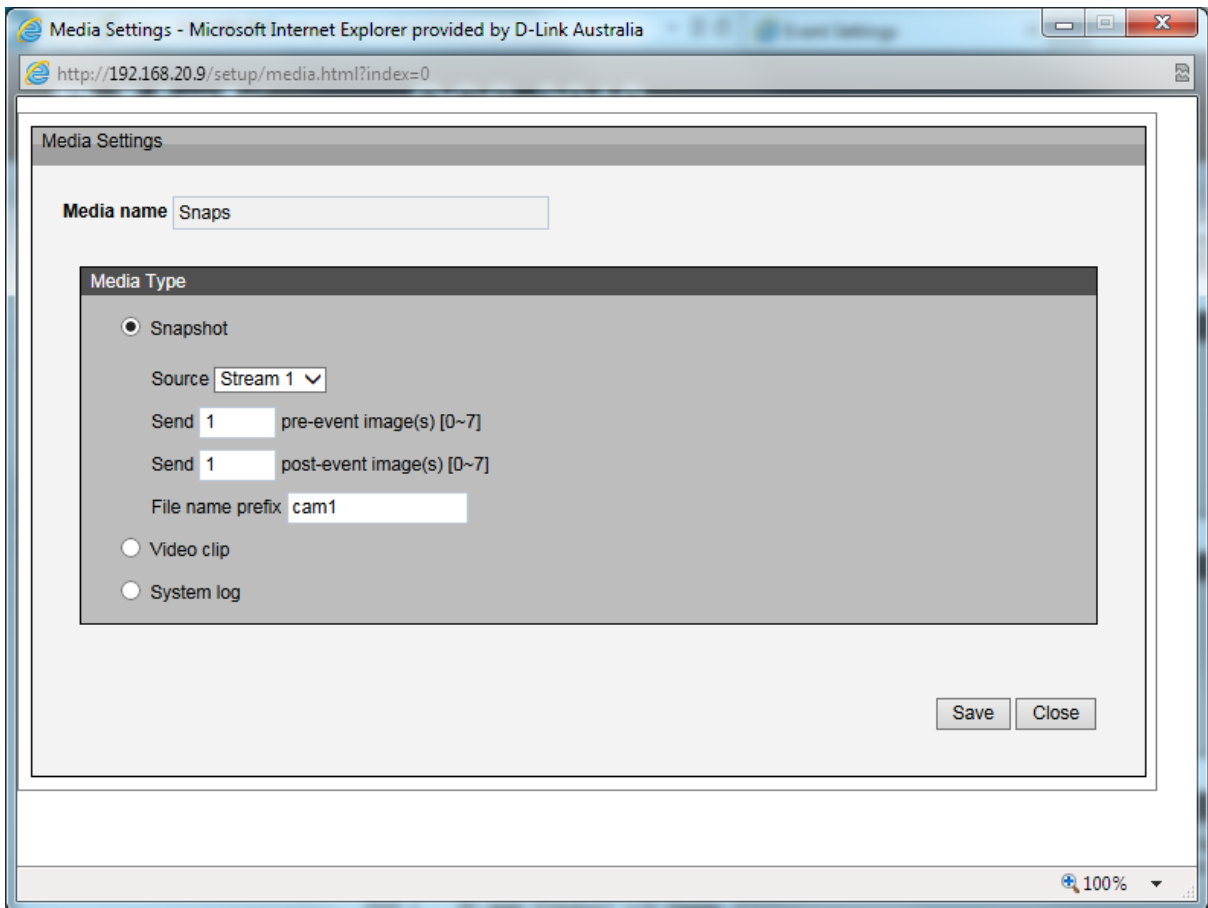
Tamper Detection Settings

Enable camera tampering detection

Trigger duration: 10 seconds [10-600]

Save







Event name

Priority

Detect next event after  second(s).

Note: This can only applied to motion detection and digital input

**Trigger**

- Video motion detection
  - Normal
  - Profile

Note: Please configure [Motion Detection](#) first
- Periodically
- System boot
- Recording notify
- Camera Tampering Detection

**Event Schedule**

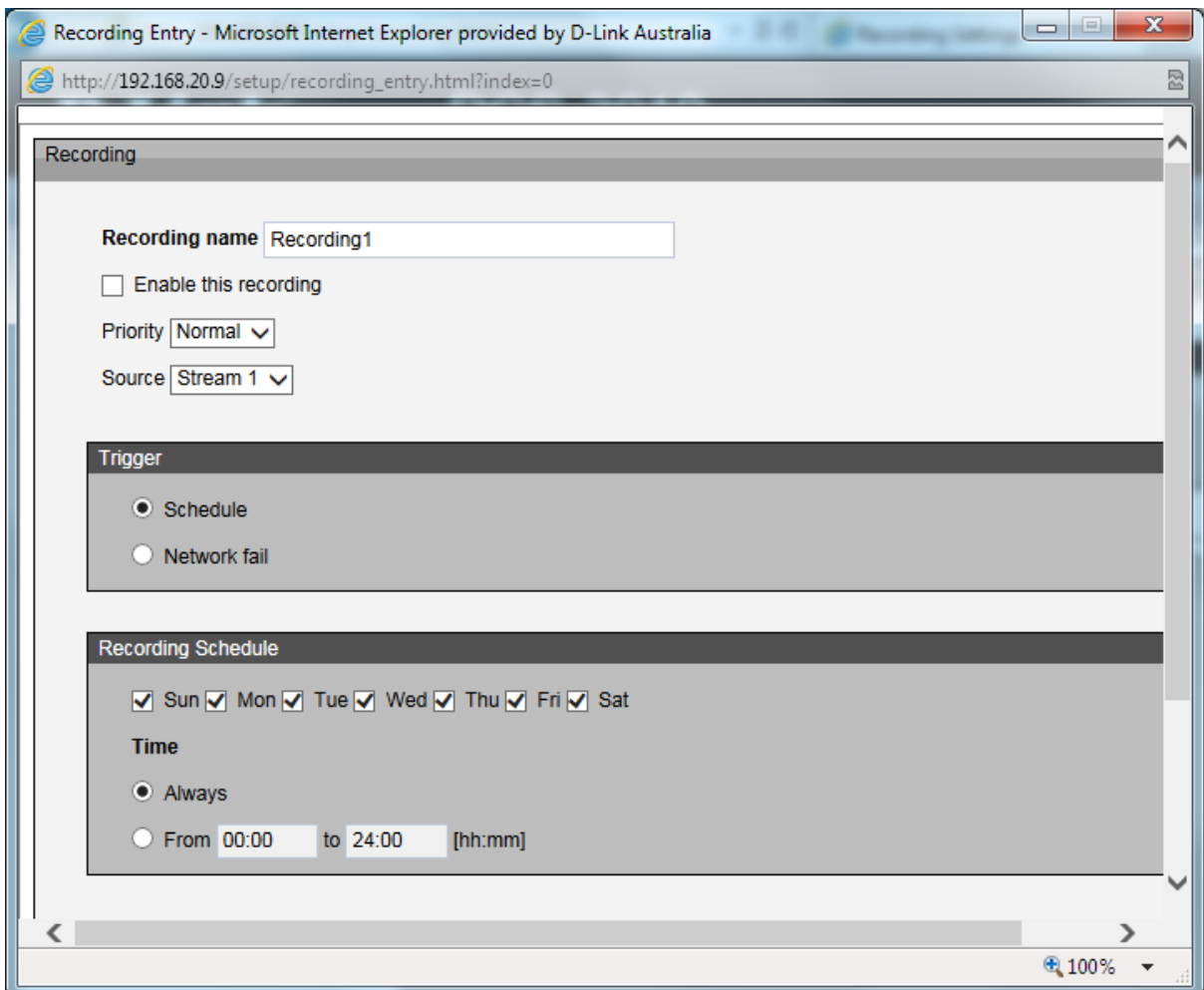
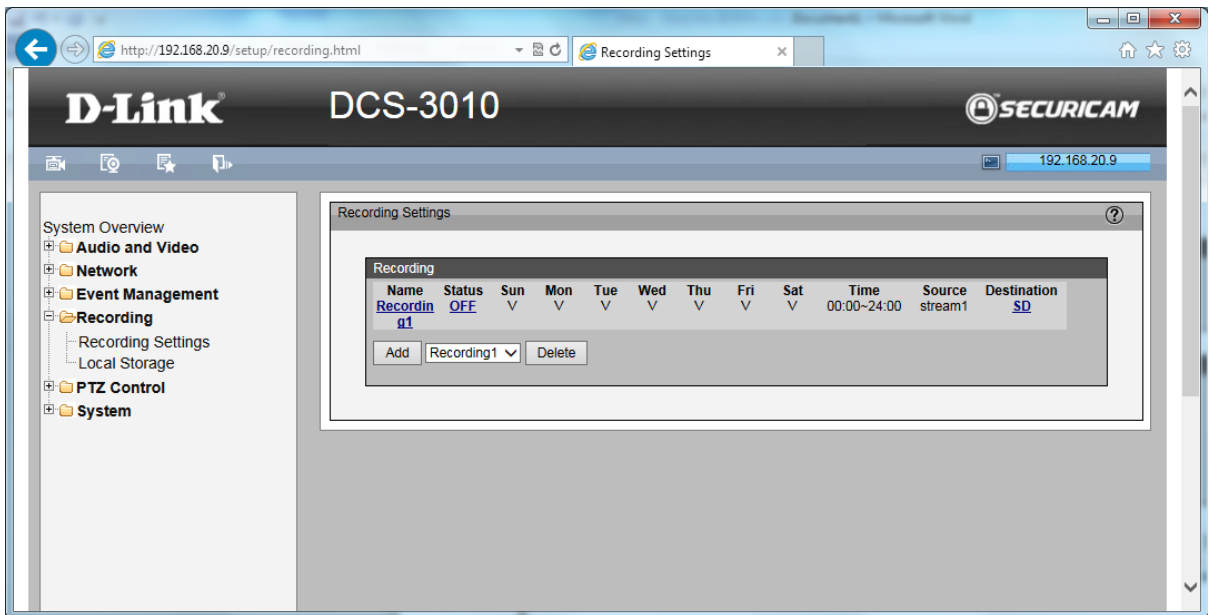
Sun  Mon  Tue  Wed  Thu  Fri  Sat

**Time**

- Always
- From  to  [hh:mm]

**Action**

Server	Media	Extra parameter
<input type="checkbox"/> SD	<input type="text" value="Snaps"/>	<input type="button" value="SD Test"/> <input type="button" value="View"/>
<input checked="" type="checkbox"/> Mail_Server	<input type="text" value="Snaps"/>	
<input type="checkbox"/> FTP_Server	<input type="text" value="Snaps"/>	
<input type="checkbox"/> HTTP_Server	<input type="text" value="Snaps"/>	
<input type="checkbox"/> NAS	<input type="text" value="Snaps"/>	<input type="checkbox"/> Create folders by date time and hour automatically



Browser: http://192.168.20.9/setup/digitalptz.html Digital PTZ

# D-Link DCS-3010 SECURICAM

192.168.20.9


System Overview

- Audio and Video
- Network
- Event Management
- Recording
- PTZ Control
  - Digital PTZ
- System

### Digital PTZ

Select stream: 1

DCS-3010 2013/03/04 00:00:



Up

Left Home Right

Down

- Zoom +

Pan speed: 0

Tilt speed: 0

Zoom speed: 0

Auto pan / patrol speed: 1

Patrol Settings

Preset locations	Selected locations	
	Source	Dwelling time

Preset position name:

Preset position:

Browser: http://192.168.20.9/setup/user\_settings.html User Settings

# D-Link DCS-3010 SECURICAM

192.168.20.9

System Overview

- Audio and Video
- Network
- Event Management
- Recording
- PTZ Control
- System
  - User Settings
  - Device Settings
  - Time and Date
  - Maintenance
  - Parameter List
  - Logs

### User Settings

**Admin Password Setup**

Password:

Confirm password:

**Add User Account**

User name:

Password:

Confirm password:

Privilege:
   
 Administrator
   
 Normal user
   
 Guest

**Manage User**

User name:

User password:

Authentication:
   
 Administrator
   
 Normal user
   
 Guest

Browser address bar: http://192.168.20.9/setup/device\_settings.html

Page Title: Device Settings

D-Link DCS-3010 SECURICAM

192.168.20.9

System Overview

- Audio and Video
- Network
- Event Management
- Recording
- PTZ Control
- System
  - User Settings
  - Device Settings
  - Time and Date
  - Maintenance
  - Parameter List
  - Logs

Device Settings

LED Settings

Turn off the LED indicator

Camera Name

Camera Name DCS-3010

Save

Browser address bar: http://192.168.20.9/setup/time\_and\_date.html

Page Title: Time and Date

D-Link DCS-3010 SECURICAM

192.168.20.9

System Overview

- Audio and Video
- Network
- Event Management
- Recording
- PTZ Control
- System
  - User Settings
  - Device Settings
  - Time and Date
  - Maintenance
  - Parameter List
  - Logs

Time and Date

Time Configuration

Current server time: 4 Mar 2013 0:0:32

Time zone: GMT+10:00 Brisbane, Canberra, Melbourne, Sydney, Guam, Vladivostok

Enable daylight saving:

Daylight saving time:

DST start	Month	Week	Day of week	Time
DST start	Mar	1st	Sun	12 am
DST end	Nov	1st	Sun	12 am

Automatic Time Configuration

Enable Automatic Time Configuration

NTP server:  << Select NTP server

Updating interval: One hour

Set the Date and Time Manually

Year	Month	Day	Hour	Minute	Second
2013	03	04	00	00	32

Copy Your Computer's Time Settings

Save

