

D-Link® Quick Installation Guide

This product can be set up
using Internet Explorer 6.x
or above

DCS-5300G

Wireless Internet Camera
with Pan and Tilt



Before You Begin

You must have at least the following:

- Windows 98/Me/2000/XP
- A CD-ROM drive
- An available Ethernet connection

Check Your Package Contents

These are the items included with your purchase:

If any of the below items are missing, please contact your reseller.



DCS-5300G Internet Camera with Remote Control



CD-ROM with Manual and Installation Wizard



A/V Cable



2 Antennas



CAT5 Ethernet Cable



Camera Stand



**12V AC Power
Adapter**



Using a power supply
with a different voltage
rating will damage this
product and void the warranty.

System Requirements

- Internet Explorer 6.x or above
- CPU: 1.7GHz or above
- Memory Size: 128MB (256MB recommended)
- VGA card resolution: 800x600 or above

Note: *If using multiple cameras for viewing/recording, the minimum requirements are a 2.4GHz or above CPU with 512MB memory and a 32MB video card.*

1

Hardware Installation

Connect the Ethernet Cable

Connect an Ethernet cable to the Ethernet connector located on the Internet Camera's back panel and attach it to the network.



If you connect this camera directly to a PC, you will need a cross-over Ethernet cable. If you plug the camera into a hub or router, you will be able to use the cable included with your camera.

Attach the External Power Supply

Attach the external power supply to the DC power input connector located on the Internet Camera's back panel (labeled DC 12V) and connect it to an AC power outlet.



Power source is confirmed when the LED Power Indicator on the Internet Camera is illuminated.

Both the red and green LEDs will flash alternately and only the red LED will remain lit. The green LED will not come on until you have configured your camera.

1

Hardware Installation (continued)

Attach the A/V cable to the A/V out connector if you wish to connect the **DCS-5300G** to your TV.



Attach the red RCA connector to the “video” connector on your TV.



Attach the black RCA cable to the “audio” connector on your TV set.

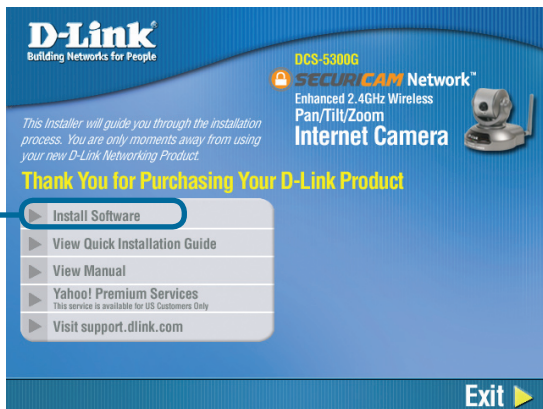


2

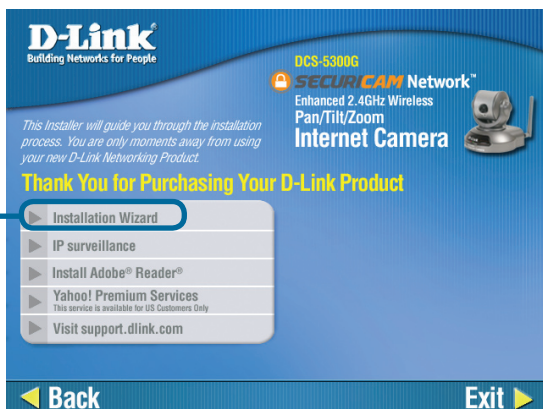
Installing the Installation Wizard

Insert the **DCS-5300G** CD into the CD-ROM drive.

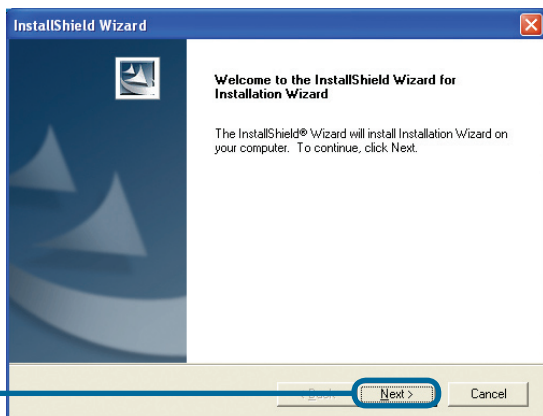
Click on **Install Software**



Click on **Installation Wizard**

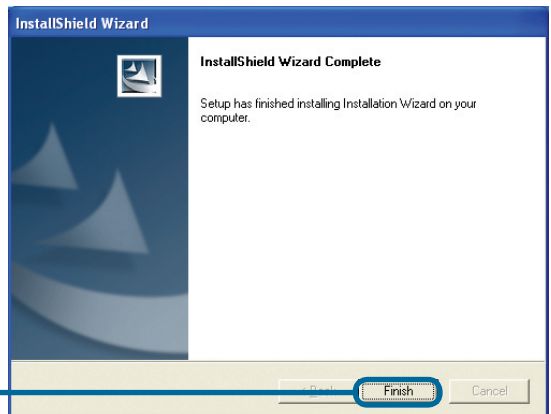
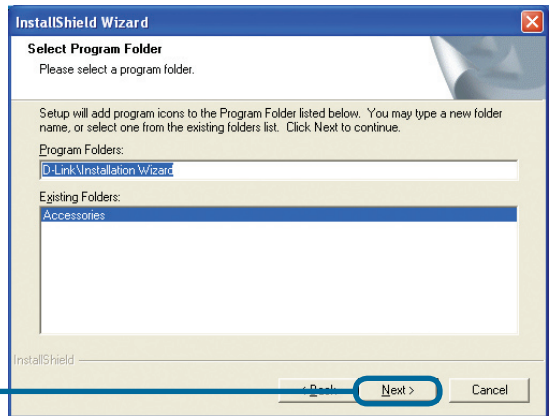
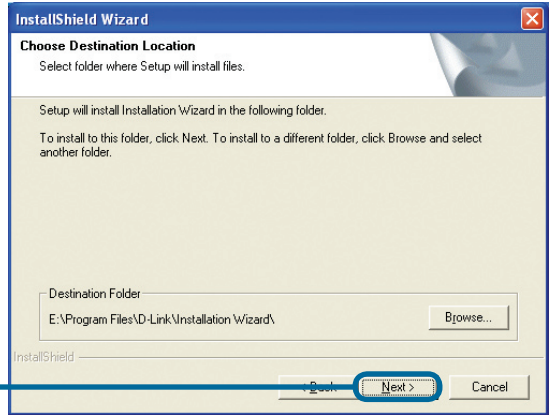


Click **Next**



2

Installing the Installation Wizard (continued)



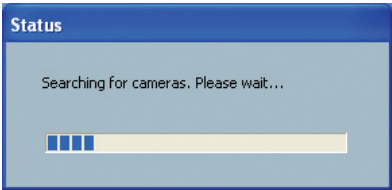
3

Configuring Your Camera with the Installation Wizard

Double click on the **Installation Wizard** that was created on your desktop.

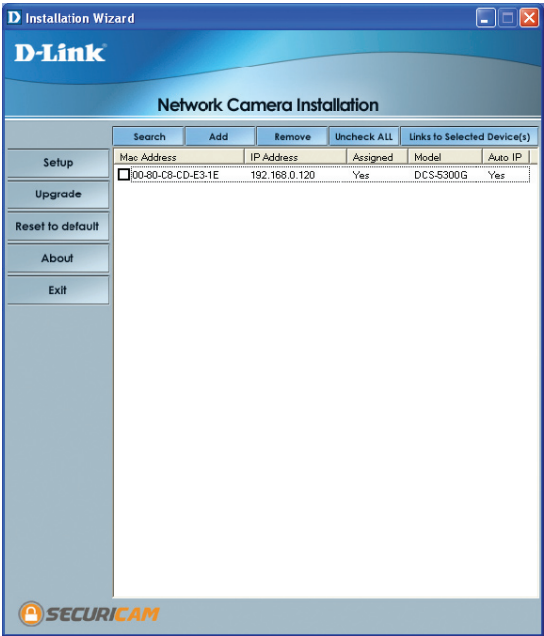


The software will search for cameras.



The Installation Wizard will appear and show the MAC address of the **DCS-5300G** and an IP Address (which may or may not be correct depending on what you have your **DCS-5300G** connected to). If you have a DHCP* server on your network, there will be a valid IP Address displayed here, indicated by a “Yes” under the assigned column.

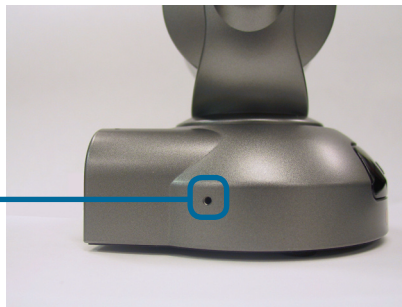
*A DHCP server is a device that supplies IP Addresses to its clients that are on the same network.



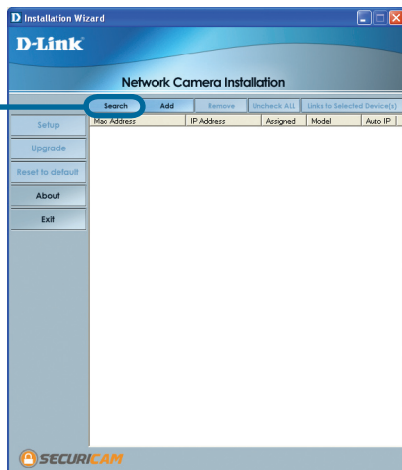
3

Configuring Your Camera with the Installation Wizard (continued)

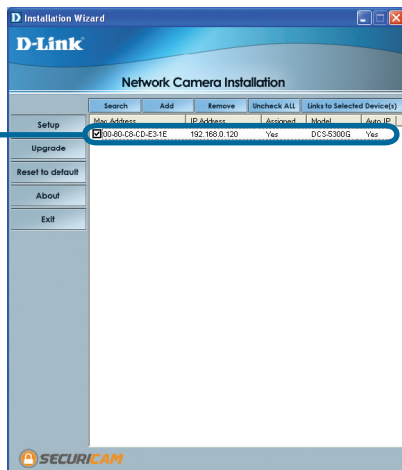
If the **Installation Wizard** does not detect any devices, you will need to find a tool small enough to fit into the reset hole and softly press down a switch for 2 cycles (the red and green LEDs will blink continuously and stop twice). Let go when the red LED starts to flash the second time.



Click **Search** to refresh the list of cameras if needed.



Once the camera appears, select the camera by placing a **Checkmark** in the box.



3

Configuring Your Camera with the Installation Wizard (continued)

Click the **Setup** button

D-Link Installation Wizard

Network Camera Installation

Search Add Remove Uncheck All Links to Selected Device(s)

Mac Address	IP Address	Assigned	Model	Auto IP
<input checked="" type="checkbox"/> 00-80-C8-CD-E3-1E	192.168.0.120	Yes	DCS-5300G	Yes

Setup Upgrade Reset to default About Exit

SECURICAM

Enter an administrative password in the Root password and Confirm password fields.

Click the **Next** button

D-Link Installation Wizard

Network Camera Installation

Previous Next Skip About Exit

Host Name: DCS-5300G

*Blank root password will disable user authentication

Root password: []

Confirm password: []

Date/Time Settings

Date: MM/DD/YY

Time: HH:MM:SS

☒ Keep current date and time
☐ Synchronize with computer time
☐ Manual
☐ Automatic

SECURICAM

For details on the Date/Time Settings, please refer to the User Manual on the CD-ROM.

3

Configuring Your Camera with the Installation Wizard (continued)

Uncheck the box labeled **Reset IP address at next boot**

Click the **Next** button

If you need to modify the IP settings, please refer to the user manual on the CD-ROM.

Here you can configure the Wireless Network Settings for the camera. For details on the Wireless Network Settings, please refer to the User Manual on the CD-ROM.

Installation Wizard
D-Link

Network Camera Installation

☒ Reset IP address at next boot

IP Address: 192 . 168 . 0 . 120
Subnet mask: 255 . 255 . 255 . 0
Default router: 192 . 168 . 0 . 1
Primary DNS: 192 . 168 . 0 . 1
Secondary DNS: 0 . 0 . 0 . 0

Previous
Next
Skip
About
Exit

Installation Wizard
D-Link

Network Camera Installation

SSID: default
Wireless mode: Infrastructure
Channel: 6
TX rate: Auto
Preamble: Short preamble
Security: None
Auth mode: Shared
Key length: 64 bits
Key format: HEX

1 00000000
2 00000000
3 00000000
4 00000000

Previous
Next
Skip
About
Exit

Click the **Apply** button

Installation Wizard
D-Link

Network Camera Installation

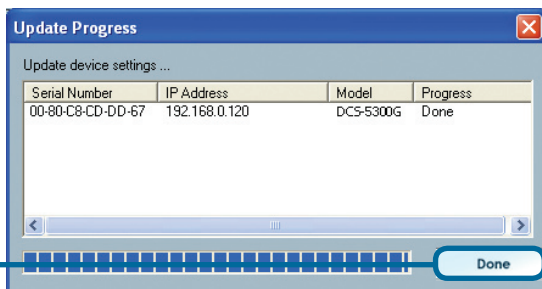
Previous
Apply
About
Exit

The Setup wizard has completed. Click on Previous to modify changes or mistakes. Click Apply to save the current settings and update to the selected server.

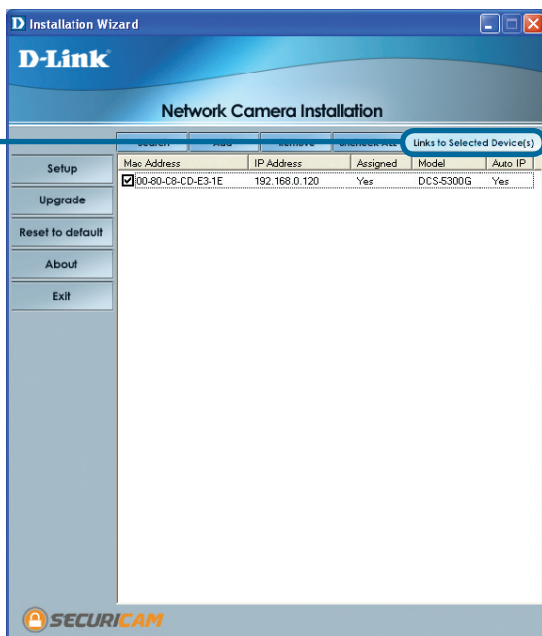
3

Configuring Your Camera with the Installation Wizard (continued)

After the settings have been saved, the Done button will appear.



Click the **Done** button

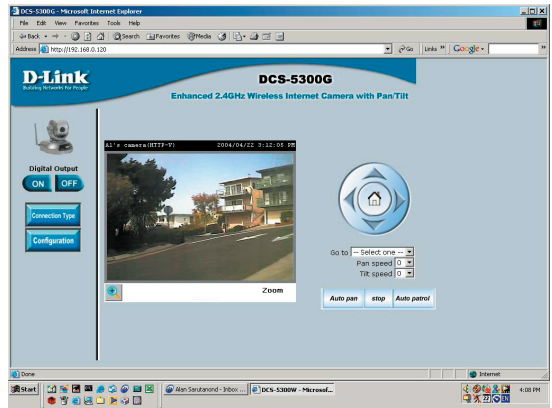


Click the button labeled **Link to Selected Device(s)**

4

Viewing Your Internet Camera

After you click the button labeled **Link to Device(s)**, the **Installation Wizard** will automatically open your web browser to the IP address of the **DCS-5300G**, in this example it is: **http://192.168.0.120**. Your **DCS-5300G** may have a different IP Address.



The installation and configuration of the **DCS-5300G** Internet Camera is now complete.

Technical Support

You can find software updates and user documentation on the D-Link website.

D-Link provides free technical support for customers within the United States and within Canada for the duration of the warranty period on this product.

U.S. and Canadian customers can contact D-Link Technical Support through our website, or by phone.

Tech Support for customers within the United States:

D-Link Technical Support over the Telephone:

(877) 453-5465

24 hours a day, seven days a week.

D-Link Technical Support over the Internet:

<http://support.dlink.com>

[email:support@dlink.com](mailto:support@dlink.com)

Tech Support for customers within Canada:

D-Link Technical Support over the Telephone:

(800) 361-5265

Monday to Friday 7:30am to 3:00am ET

D-Link Technical Support over the Internet:

<http://support.dlink.ca>

[email:support@dlink.ca](mailto:support@dlink.ca)

