

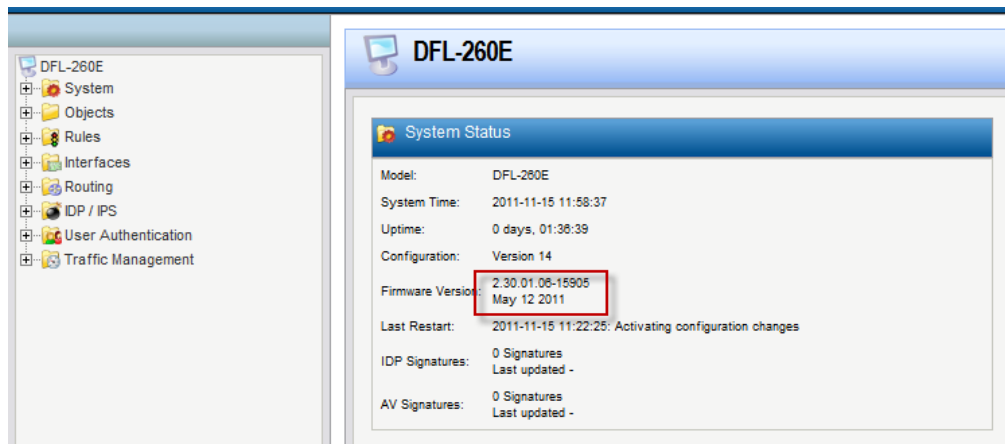
How to setup SSL VPN on DFL-series Firewall

Topology:

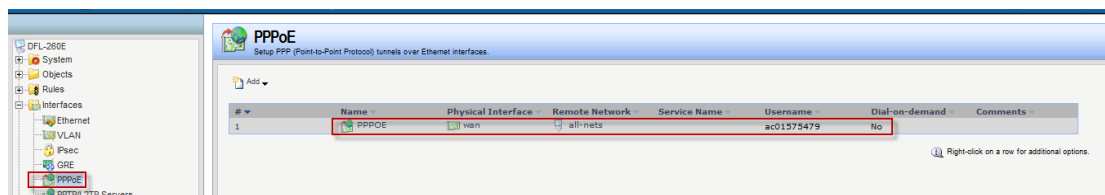
PC 1 ----- DFL (PPPoE) ----- Internet ----- SSL client (Remote User)

Setup:

(1) Check firmware. You need to use 2.30.01.06 or later.



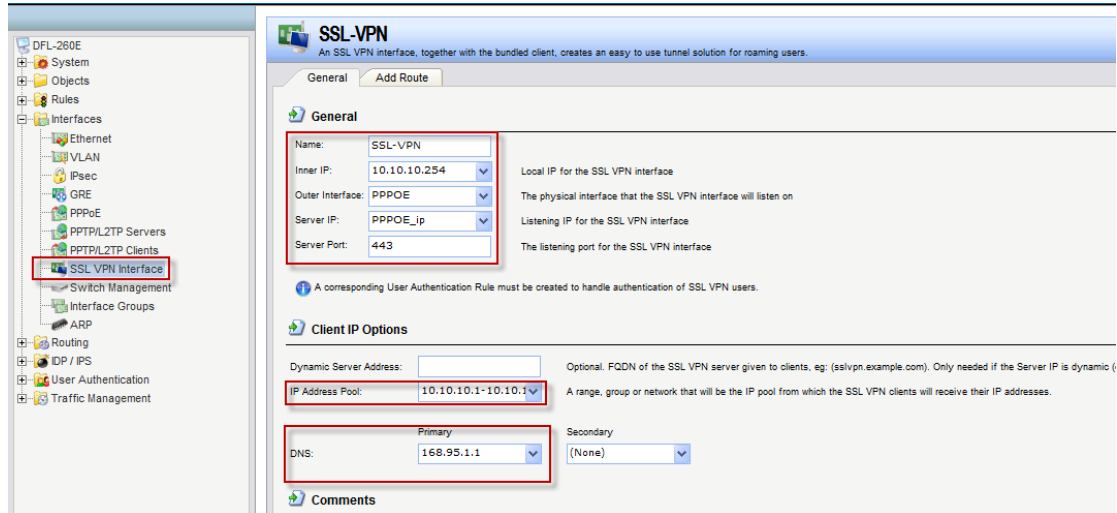
(2) If you have not setup your PPPoE Internet connection yet - add a new PPPoE interface.



(3) Add a new SSL VPN interface. Inter IP and IP address pool – they must be in the same subnet.

Outer interface: PPPoE

Server IP: pppoe_ip



Note:

- **Inner IP**

This is the IP number within the tunnel that SSL VPN clients will connect to.

All clients that connect to the SSL VPN object interface are allocated an IP from the SSL VPN interface's *IP Pool*. All the pool addresses as well as the *Inner IP* must belong to the same network and these define the relationship between the firewall and the connecting clients.

A private IP network should be used for this purpose. The *Inner IP* itself must not be one of the *IP Pool* addresses that can be handed out to connecting SSL VPN clients.

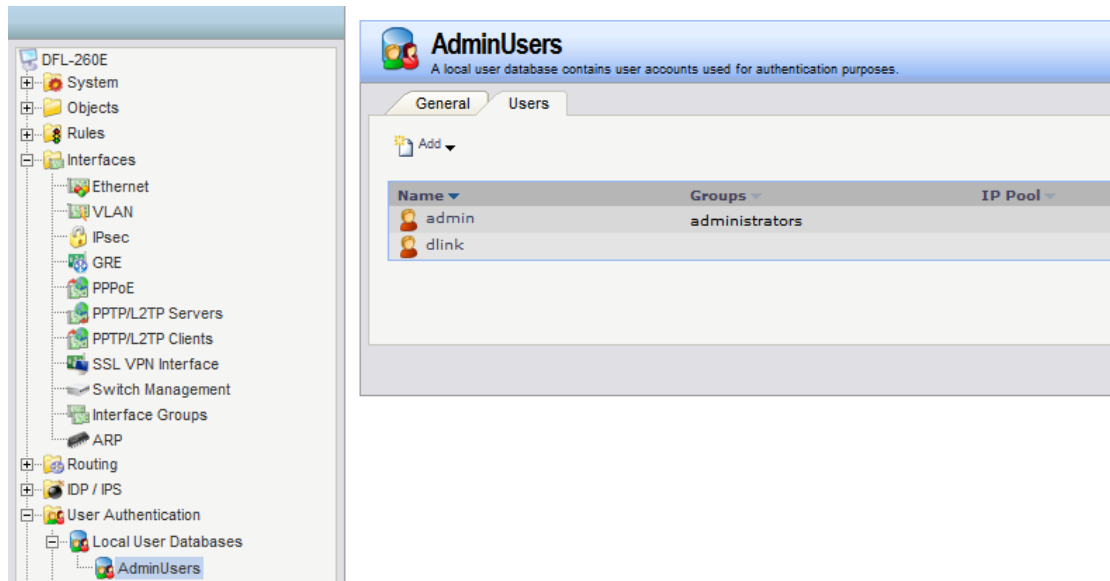
- **IP Pool**

As described above, client IP addresses for new SSL VPN connections are handed out from a pool of private IPv4 addresses. This pool is specified by an IP address object defined in the NetDefendOS address book. It is *not* the same as an *IP Pool* object used with IPsec.

The pool addresses do not need to be a continuous range but must belong to the same network. The *Inner IP* listed above must also belong to this network but must not be one of the pool IPs.

About more SSL VPN information, please read “NetDefendOS_2.40.00_Firewall_UserManual”.

(4) Add a new SSL VPN user “dlink”.

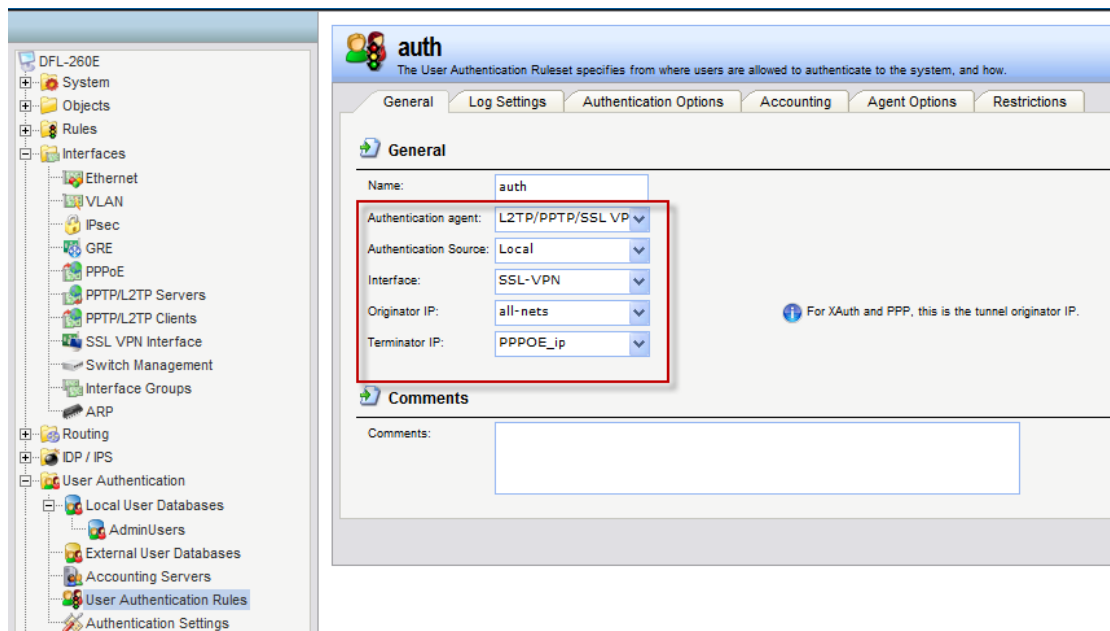


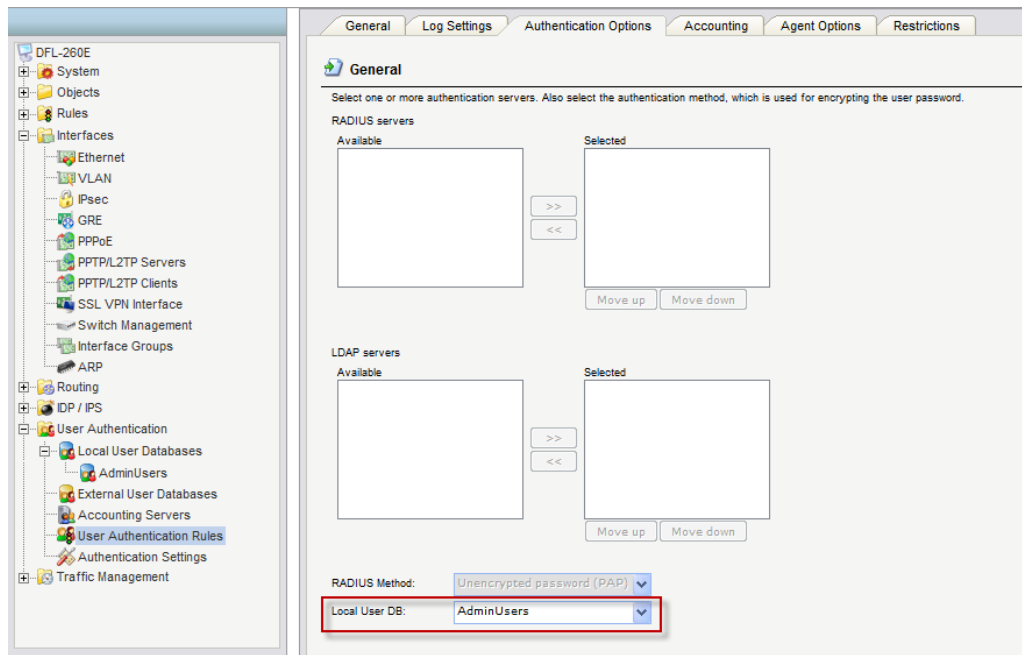
(5) Go to “User Authentication rules”.

Interface: SSL-VPN

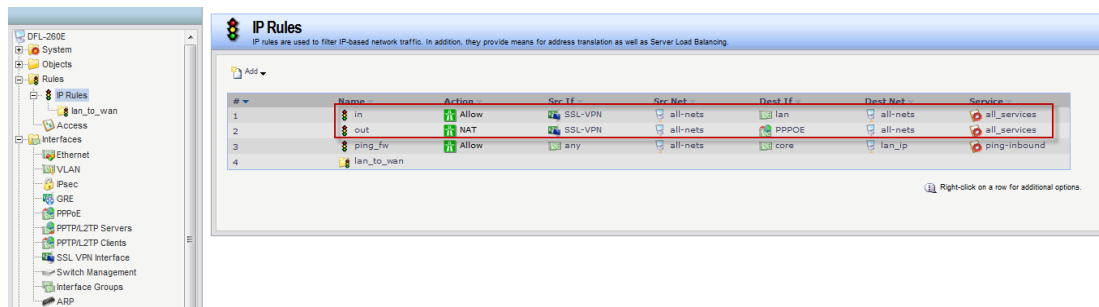
Originator IP: all-nets

Terminator IP: PPPOE_ip





(6) Add 2 IP rules for SSL VPN user.



(7) Save the firewall's configuration.

(8) Remote user needs to open a web browser and enter the firewall's WAN IP address (or DynDNS address). Enter SSL username and password. Accept the download and installation of SSL thin client. Remote user can now use this thin client to connect.

