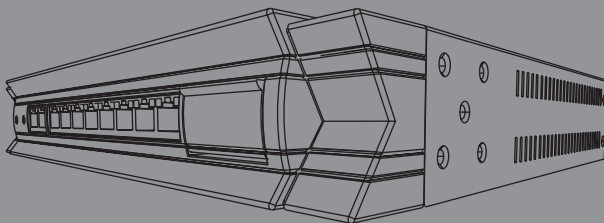




NETDEFEND

NETWORK SECURITY FIREWALL

This Quick Guide will guide you through the installation Process. You are only moments away from using your new D-Link Network Security Product **DFL-800**



1. Before You Begin

| | |
|--------------------------------------|---|
| 1.1 Check Your Package Contents..... | 1 |
|--------------------------------------|---|

2. Identifying Components

| | |
|---|---|
| 2.1 Front View..... | 2 |
| 2.2 LED Indicators..... | 3 |
| 2.3 Default Interface Attribute Definition..... | 3 |

3. Connecting the DFL-800

| | |
|--|---|
| 3.1 Setting up Firewall to your Network..... | 4 |
|--|---|

4. Configure DFL-800

| | |
|---------------------------------------|---|
| 4.1 Configure your Computer's IP..... | 5 |
| 4.2 Using the Setup Wizard..... | 6 |

5. Appendix

| | |
|--|----|
| 5.1 How to Configure Static IP Manually on Microsoft Windows XP..... | 15 |
| 5.2 How to Configure Static IP Manually on Apple MAC OS X..... | 16 |

6. Statement

DFL-800 Before You Begin

1

1.1 Check Your Package Contents

Your NetDefend Network Security Firewall package should contain all the items listed below. If any of these items is found damaged or missing in your package, report it to your reseller immediately for replacement.

- One (1) DFL-800 NetDefend™ Network Security Firewall
- One (1) Power Cord
- One (1) 5V DC Power Adapter
- One (1) Console Cable (RS-232 cable)
- One (1) Ethernet (CAT5 UTP/Straight Through) Cable
- One (1) Ethernet (CAT5 UTP/Cross-over) Cable
- One (1) CD-ROM (containing QIG/Manual)
- Two (2) Rack Mount Brackets



DFL-800



Power Cord



Power Adapter



Ethernet Cable
(Straight-Through)



Ethernet Cable
(Cross-over)



Rack Mount Brackets



Console Cable



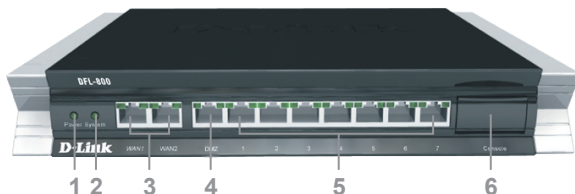
CD-ROM

Identifying Components

2

The following illustrates the front panel of the DFL-800 and explains the front panel's key components:

2.1 Front View



- 1. Power LED** Power indication of the DFL-800.
- 2. System LED** System status indication of the DFL-800.
- 3. WAN Ports** These are for the connection of an Ethernet cable to a Cable or DSL modem.
- 4. DMZ Port** This is for the connection of an Ethernet cable to an DMZ network.
- 5. LAN Ports** These are for the connection of Ethernet cables to the internal network.
- 6. Console Port** Connects to RS-232 console cable that connects to PC. The console port is hidden behind a protection coverlid that can be opened by pulling down the lid.

Note:

None of the WAN1 and WAN2 interfaces support Auto MDI/MDI-X (Automatic cable detection for Straight-through and Crossover function).

2.2 LED Indicators

| LED | Status | Color | Description |
|------------------------------|----------------|-------|--|
| Power | Solid green | Green | The device is powered on. |
| | Light off | | The device is powered off. |
| System | Solid green | Green | System is operating properly. |
| | Light off | | The device is not working. |
| | Blinking green | | System is defective, such firmware upgrade fail. |
| Phone Jack LED light (right) | Light off | Green | No link |
| | Solid Green | | Link present |
| | Blinking Green | | Port is sending or receiving data. |
| Phone Jack LED light (left) | Light off | Green | Port is operating at 10Mbps. |
| | Solid green | | Port is operating at 100Mbps. |

2.3 Default Interface Attribute Definition

| Wording on Front plate | Default name in firewall | Default interface type definition | Default interface IP Address | Default DHCP Status |
|------------------------|--------------------------|-----------------------------------|------------------------------|---------------------|
| WAN1 | WAN1 | DHCP client | N/A | Enabled |
| WAN2 | WAN2 | Static IP | 192.168.120.254/24 | Disable |
| DMZ | DMZ | Static IP | 172.17.100.254/24 | Disable |
| Ports: 1~7 | LAN | Static IP | 192.168.1.1/24 | Disable |



Note:

NetDefendOS only allows Web GUI access from LAN port by default for security consideration. Please refer to user manual for more detail about how to change this configuration.

3.1 Connecting Firewall to Your Network

- A. First, connect the power cord to the receptor at the back panel of the DFL-800 and then plug the other end of the power cord to a wall outlet or power strip. Then powered on the DFL-800 using the on/off switch. Now the Power LED will turn ON to indicate proper operation. After the power LED turns on, you need to wait 1-2 minutes for the DFL-800 to boot up completely.
- B. Connect an Ethernet cable from the DFL-800 to your Cable/DSL modem. If the Cable/DSL modem is powered on, wait for the WAN1 LED on the DFL-800 to light up to show a proper connection. Otherwise, turn off your Cable/DSL modem, connect the Ethernet cable from the DFL-800 to your Cable/DSL modem, and turn on the Cable/DSL modem. Some Cable/DSL modems may not have an on/off switch and will require you to unplug the power adapter.

 **Note:**

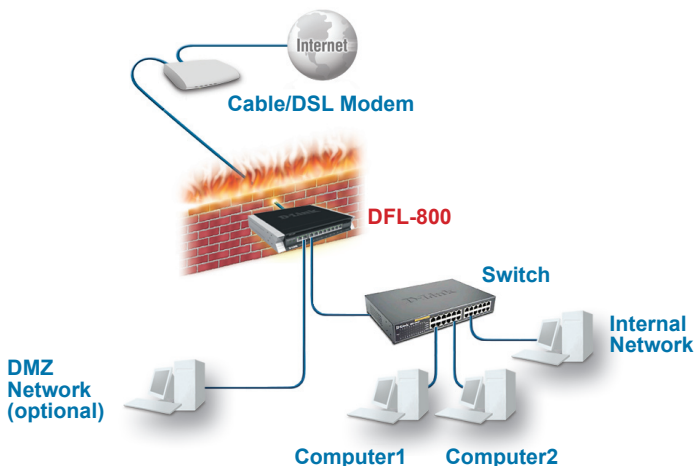
The default management IP address of the DFL-800 is 192.168.1.1. If you have are using a router that uses DHCP, there may be a conflict if the router uses the same IP address as the DFL-800. If this is the case, either disconnect the DFL-800 from the router and change the management IP address of the DFL-800, or change the DHCP settings on your router.

- C. Insert an Ethernet cable to the LAN1 port on the front panel of the DFL-800 and connect it to a port on your network hub or switch. The LED light above the Ethernet port on the DFL-800 will illuminate to indicate proper connection
- D. Connecting the computer that you will use to configure the DFL-800 to the network hub or switch.

4.1 Configure Your Computer's IP Address

Make sure that the network adapter in your computer is configured to use a static IP address with 192.168.1.1 as default gateway and 255.255.255.0 as netmask. Instructions on how to configure the network adapter can be found in the appendix.

When you have completed the steps in this *Quick Installation Guide*, your connected network should look similar to this:



4.2 Using the Setup Wizard

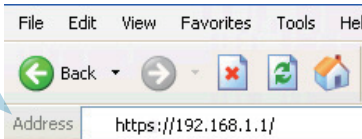
The DFL-800 provides Web based configuration. You can configure your DFL-800 through Internet Explorer 6 and later or Firefox 1.0 and later browser in MS Windows, Macintosh or UNIX based platforms.

Activate your browser, and ensure your built-in Pop-Up Blocker has been disabled, so that the Pop-Up Blocker will not block the Startup Wizard while you initiate the NetDefend Firewall for the first time.

Additionally, in order to reduce the impact of Pop-Up Blocker, a user-friendly mechanism has been implemented in NetDefend Firewalls. A "Startup Wizard" button is shown on the toolbar since firmware v2.20. This button is available on the WebGUI while the appliance is initiated with Configuration Version 1. Once you complete configuration and save/activate the setting, the Startup Wizard button will be removed automatically from the toolbar while you login WebGUI next time.

Now, let's start on WebGUI login, type the IP address of the DFL-800, e.g. <https://192.168.1.1>, in the Location (for Netscape) or Address (for IE) field and press "Enter".

Open your Web browser and type <https://192.168.1.1> into the URL address box. Then press the Enter or Return key.



Note:

DFL-800 allows either HTTP or a secure HTTPS connection from any management host. However, for security reason, by default only a secure HTTPS connection is allowed.

Log on to the DFL-800 web interface.

To start using the DFL-800 web interface you need to log on using the default username and password.

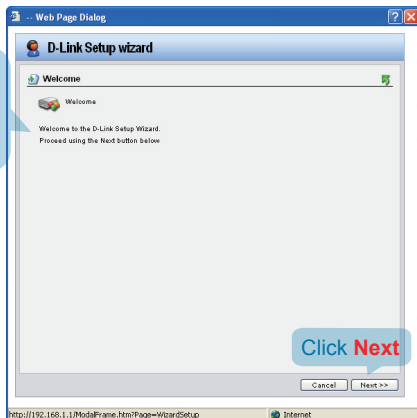
Type the default Username/Password
Username: admin
Pasword: admin
and click Login

 A screenshot of a web page titled "Authentication Required". The page has a blue header and a white body. It contains a form with the following elements:

- A heading: "Authentication Required"
- A prompt: "Please enter your username and password."
- A "Username:" label followed by a text input field.
- A "Password:" label followed by a text input field.
- A "Language:" label followed by a dropdown menu currently set to "English".
- A "Login" button.
- An image of a padlock on the right side of the form.
- Footer text: "Optimized for Internet Explorer 6 (and later), Firefox and Netscape 8"

Step1 - Welcome to the DFL-800 setup wizard!

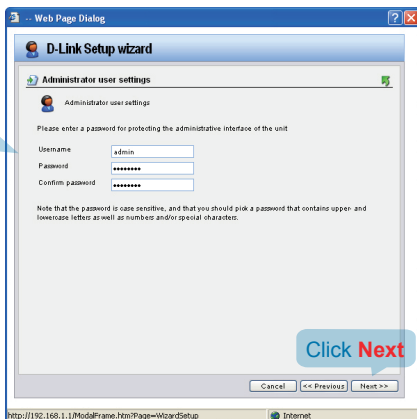
This wizard will guide you through the setup of your DFL-800



Step2 - Set up firewall administrator password

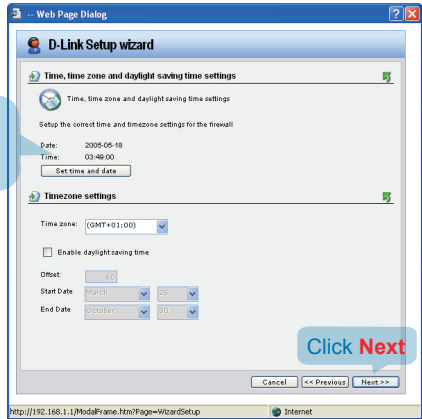
First **Enter** the username that you want to use for the admin account.

Enter the password that you want to use for the admin account.

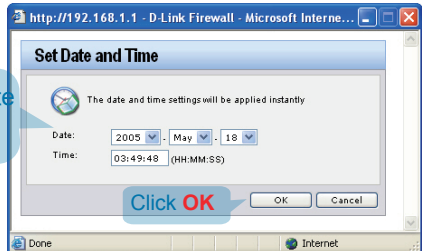


Step 3 - Set up time and date

Click Set time and date button for setting device

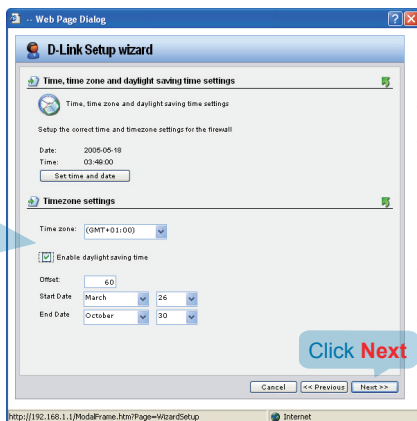


Select the appropriate date
Enter the appropriate time



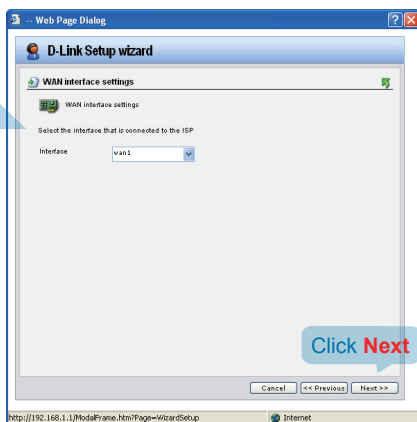
Step 4 - Set up timezone

Select the appropriate
timezone.
Enter the appropriate
daylight saving time
settings.



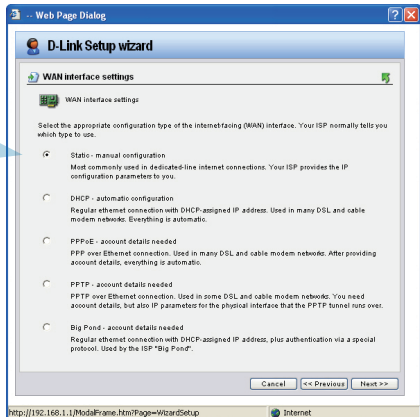
Step 5 - Select WAN interface

Select the WAN
interface that you want
to use.



Step 6 - Configure WAN interface

Select the appropriate configuration for the WAN interface, Click **Next** and continue to step 7.1 further down.

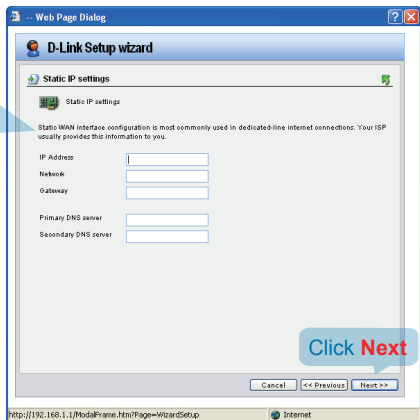


Note:

If you are unsure of which setting to select, please contact your Internet Service Provider.

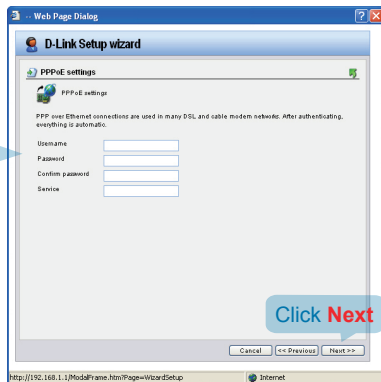
Step 7.1 - WAN Interface Type is Static IP

If you selected Static IP you have to fill out the IP address information provided to you by your ISP. You will need to complete all the required fields except for Secondary DNS Server.



Step 7.2 - WAN Interface Type is PPPoE

If you selected PPPoE (Point-to-Point Protocol over Ethernet) you will have to fill out the user name and password provided to you by your ISP. The PPPoE Service Name field should be left blank unless your ISP informs you otherwise.



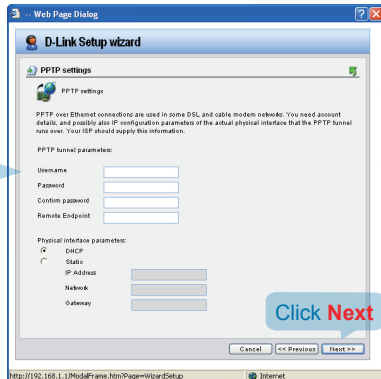
The screenshot shows the 'D-Link Setup wizard' window with the 'PPPoE settings' tab selected. The window title is 'Web Page Dialog'. The main heading is 'D-Link Setup wizard'. Below it, the 'PPPoE settings' section is active. A note states: 'PPPoE over Ethernet connections are used in many DSL and cable modem networks. After authenticating, everything is automatic.' There are four input fields: 'Username', 'Password', 'Confirm password', and 'Service'. At the bottom right, there is a red callout box with the text 'Click Next'. At the bottom of the window, there are buttons for 'Cancel', '<< Previous', and 'Next >>'. The status bar at the bottom shows the URL 'http://192.168.1.1/ModemFrame.htm?Page=WizardSetup' and an 'Internet' icon.

Step 7.3 - WAN Interface Type is PPTP

Enter Username, Password and the PPTP Server IP address provided by your ISP.

DHCP: If your ISP provider is using DHCP you should select the DHCP radio button.

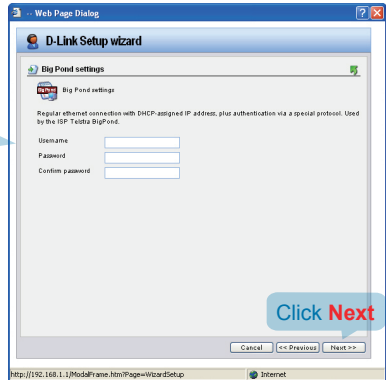
Static IP: If your Internet Service Provider is using Static IP you should select the Static IP radio button and enter IP Address, choose a Subnet Mask and enter the Gateway IP address.



The screenshot shows the 'D-Link Setup wizard' window with the 'PPTP settings' tab selected. The window title is 'Web Page Dialog'. The main heading is 'D-Link Setup wizard'. Below it, the 'PPTP settings' section is active. A note states: 'PPTP over Ethernet connections are used in some DSL and cable modem networks. You need account details, and possibly also IP configuration parameters of the actual physical interface that the PPTP tunnel runs over. Your ISP should supply this information.' There are four input fields: 'Username', 'Password', 'Confirm password', and 'Remote Endpoint'. Below these, there are two sections: 'Physical interface parameters' with radio buttons for 'DHCP' (selected) and 'Static', and 'Static' with input fields for 'IP Address', 'Subnet Mask', and 'Gateway'. At the bottom right, there is a red callout box with the text 'Click Next'. At the bottom of the window, there are buttons for 'Cancel', '<< Previous', and 'Next >>'. The status bar at the bottom shows the URL 'http://192.168.1.1/ModemFrame.htm?Page=WizardSetup' and an 'Internet' icon.

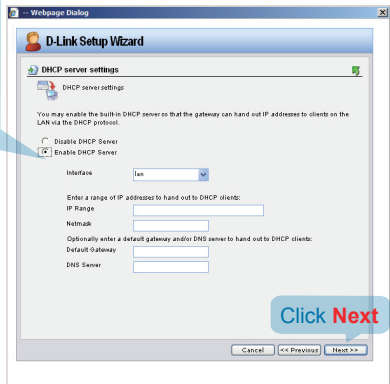
Step 7.4 - WAN Interface Type is Big Pond

If you selected Big Pond you will have to fill out the user name and password provided to you by your ISP. Click **Next** and continue to step 8.



Step 8 - Set up built-in DHCP server

If you want to use the built-in DHCP Server in the DFL-800, choose **Enable DHCP Server** in this screen. You then need to specify a range of IP addresses to hand out to the DHCP clients. This range is entered in the format "**Start IP - Stop IP**" i.e. 192.168.0.100 - 192.168.0.200. If you don't want to use the built-in DHCP Server or configure it later, choose Disable DHCP Server.



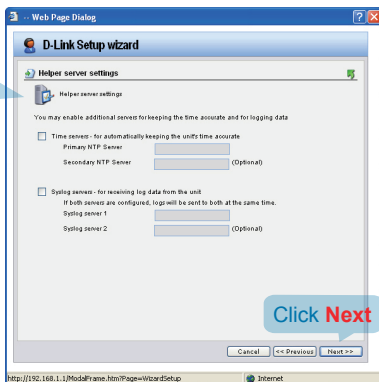
Step 9 - Configure helper servers

NTP Servers

If enabled, specify which NTP Servers that should be used to synchronize the firewall time

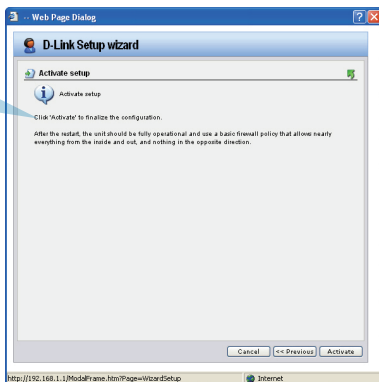
Syslog Servers

If enabled, specify where the firewall should log, you can specify up to two Syslog receivers



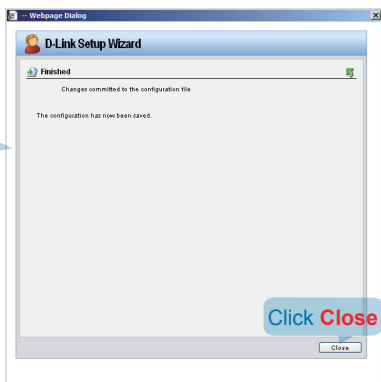
Step 10 - Setup Wizard Complete

Click **Activate** to complete your configuration.



Step 11 - Confirmation

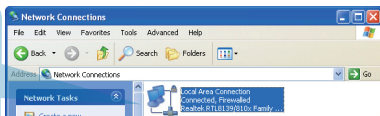
Confirm the changes committed to the configuration file and it has been saved now.



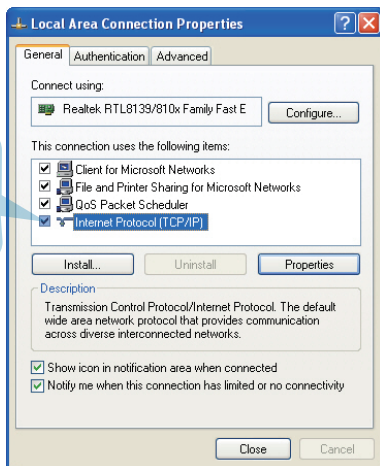
To connect to the DFL-800 Network Security Firewall, make sure the network adapter in your computer is configured properly. Here is how to configure the network adapter manually to the correct IP-address.

5.1 How to configure Static IP Manually on Microsoft Windows XP

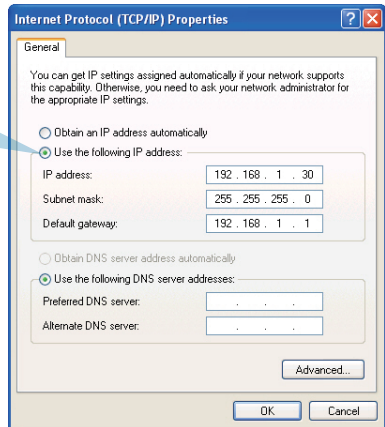
Go to **Start > right click on My Network Places > select Properties > Right-click on the Network Connection** of the Ethernet adapter connecting to the DFL-800 and select **Properties**.



Click **Internet Protocol (TCP/IP)**
Click **Properties**



Select **Use the following IP address**
 Set IP address to **192.168.1.30**,
 Subnet mask to **255.255.255.0**
 and Default gateway to **192.168.1.1**
 Click **OK**

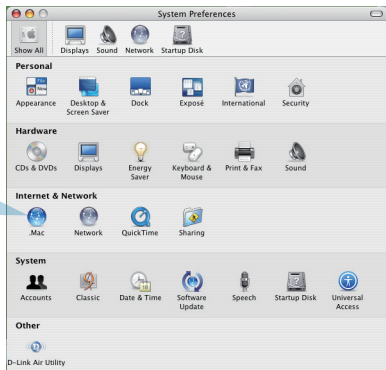


Note:

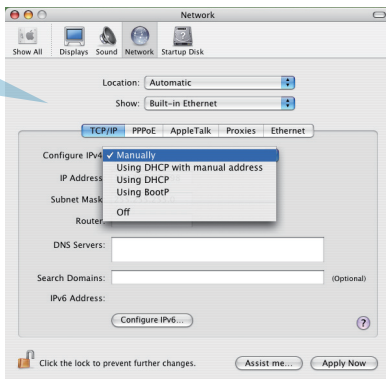
Except for 192.168.1.1, you could set your PC with any IP addresses that same as the 192.168.1.0/ 255.255.255.0 subnet.

5.2 How to Configure Static IP Manually on Apple Mac OS X

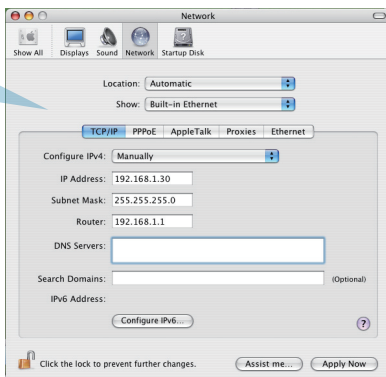
Go to the **Apple Menu**
 Click on **Network**
 and **Select System Preferences**
 Click on **Network**



Select **Built-in Ethernet** in the show pull down menu
Select **Manually** in the Configure pull down menu



Set IP Address to **192.168.1.30**,
Subnet Mask to **255.255.255.0**
and Router to **192.168.1.1**.
Click on **Apply Now**



EMI Statement

FCC Warning

This equipment has been tested and found to comply with the limits for a Class B digital device, pursuant to Part 15 of the FCC Rules. These limits are designed to provide reasonable protection against harmful interference when the equipment is operated in a commercial environment. This equipment generates, uses, and can radiate radio frequency energy and, if not installed and used in accordance with this user's guide, may cause harmful interference to radio communications. Operation of this equipment in a residential area is likely to cause harmful interference in which case the user will be required to correct the interference at his own expense.

CE Mark Warning

This is a Class B product. In a domestic environment, this product may cause radio interference in which case the user may be required to take adequate measures.

Warnung!

Dies ist ein Produkt der Klasse B. Im Wohnbereich kann dieses Produkt Funkstörungen verursachen. In diesem Fall kann vom Benutzer verlangt werden, angemessene Massnahmen zu ergreifen.

Precaución!

Este es un producto de Clase B. En un entorno doméstico, puede causar interferencias de radio, en cuyo caso, puede requerirse al usuario para que adopte las medidas adecuadas.

Attention!

Ceci est un produit de classe B. Dans un environnement domestique, ce produit pourrait causer des interférences radio, auquel cas l'utilisateur devrait prendre les mesures adéquates.

Attenzione!

Il presente prodotto appartiene alla classe B. Se utilizzato in ambiente domestico il prodotto può causare interferenze radio, nel cui caso è possibile che l'utente debba assumere provvedimenti adeguati.

VCCI Warning

この装置は、クラス B 情報技術装置です。この装置を家庭環境で使用すると電波妨害を引き起こすことがあります。この場合には使用者が適切な対策を講ずるよう要求されることがあります。

BSMI Warning

警告使用表

這是乙類的資訊產品，在居住的環境中使用時，可能會造成射頻干擾，在這種情況下使用者會被要求採取某些適當的對策。