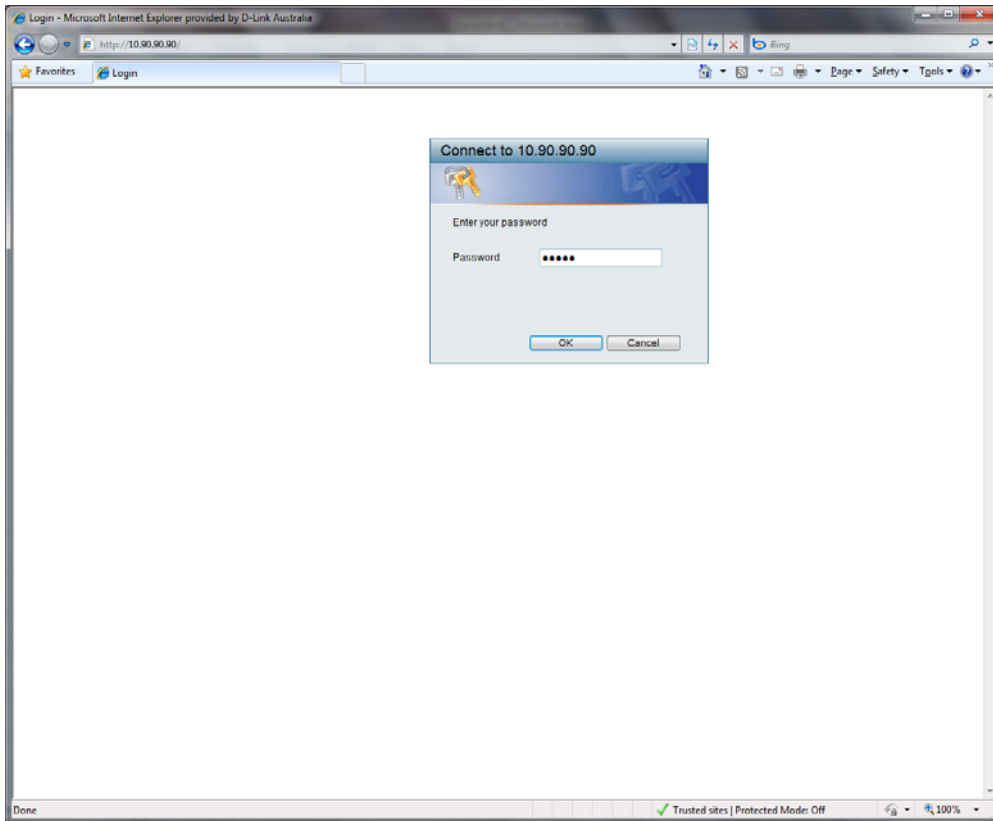


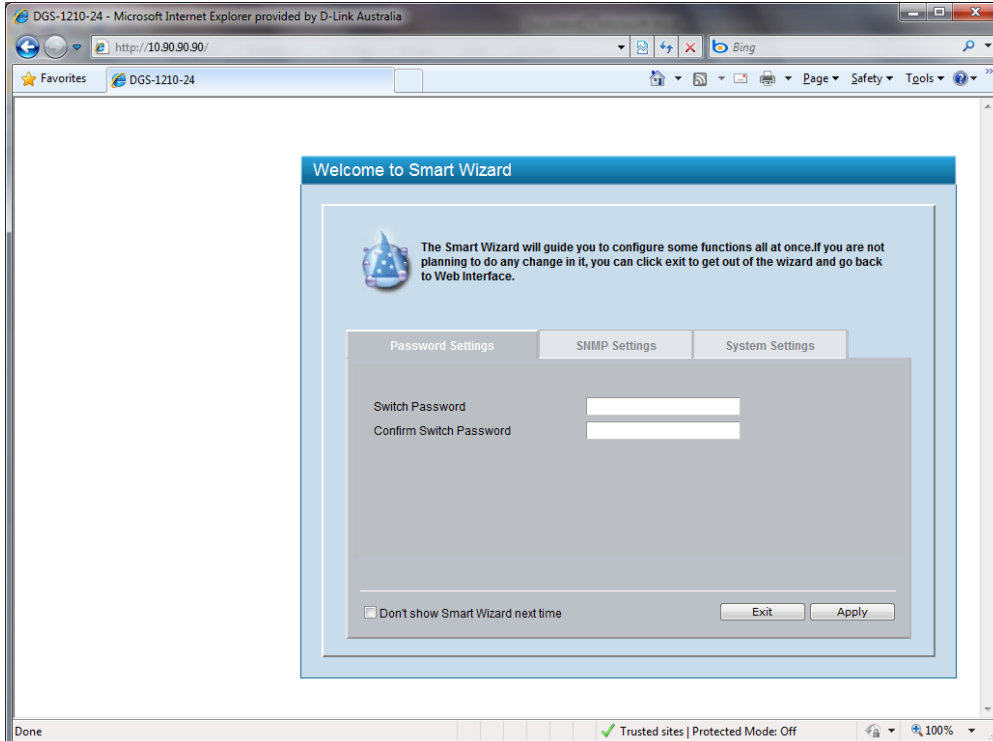
DGS-1210-24

A1G

FW 1.00.015



Password: admin



DGS-1210-24 - Microsoft Internet Explorer provided by D-Link Australia

http://10.90.90.90/

D-Link Building Networks for People

Smart

admin - 10.90.90.0

Save Tools Smart Wizard Online Help

DGS-1210-24

- System
 - System Settings
 - Trap Settings
 - Port Settings
 - SNMP Settings
 - Password Access Control
 - System Log Settings
- Configuration
 - Jumbo Frame
 - 802.1Q VLAN
 - 802.1Q Management VLAN
 - Voice VLAN
 - Link Aggregation
 - IGMP Snooping
 - Port Mirroring
 - Power Saving
 - Loopback Detection
 - SNTP Settings
 - Spanning Tree
- QoS
 - Storm Control
 - Bandwidth Control
 - 802.1p/DSCP Priority Settings
- Security
 - Trusted Host
 - Safeguard Engine
 - Port Security
 - 802.1X
 - MAC Address Table
- Monitoring
 - Statistics
 - Cable Diagnostics
 - System Health
- ACL
 - ACL Configuration Wizard
 - Access Profile List
 - ACL Filter

Device Information

Device Information	DGS-1210-24	System Time	01/01/2009 00:04:53
Device Type		System Up Time	0 days, 0 hours, 4 mins, 57 seconds
System Name		MAC Address	00-25-5A-F0-26-F7
System Location		IP Address	10.90.90.90
Boot Version	1.00.003	Subnet Mask	255.0.0.0
Firmware Version	1.00.015	Default Gateway	0.0.0.0
Protocol Version	2.001.004	Trap IP	0.0.0.0
Hardware Version	A1	Login Timeout (minutes)	5
Serial Number	QB1B1A2000001		

Device Status and Quick Configurations

RSTP	Disabled	Settings	SNMP Status	Disabled	Settings
Port Mirroring	Disabled	Settings	802.1X Status	Disabled	Settings
Storm Control	Disabled	Settings	802.1Q Management VLAN	Disabled	Settings
Safeguard Engine	Enabled	Settings	DHCP Client	Disabled	Settings
IGMP Snooping	Disabled	Settings	Jumbo Frame	Disabled	Settings
Power Saving	Enabled	Settings			

Trusted sites | Protected Mode: Off

DGS-1210-24 - Microsoft Internet Explorer provided by D-Link Australia

http://10.90.90.90/

D-Link Building Networks for People

Smart

admin - 10.90.90.0

Save Tools Smart Wizard Online Help

DGS-1210-24

- System
 - System Settings
 - Trap Settings
 - Port Settings
 - SNMP Settings
 - Password Access Control
 - System Log Settings
- Configuration
 - Jumbo Frame
 - 802.1Q VLAN
 - 802.1Q Management VLAN
 - Voice VLAN
 - Link Aggregation
 - IGMP Snooping
 - Port Mirroring
 - Power Saving
 - Loopback Detection
 - SNTP Settings
 - Spanning Tree
- QoS
 - Storm Control
 - Bandwidth Control
 - 802.1p/DSCP Priority Settings
- Security
 - Trusted Host
 - Safeguard Engine
 - Port Security
 - 802.1X
 - MAC Address Table
- Monitoring
 - Statistics
 - Cable Diagnostics
 - System Health
- ACL
 - ACL Configuration Wizard
 - Access Profile List
 - ACL Filter

System Settings

IP Information

Static DHCP

IP Address:

Subnet Mask:

Gateway:

Apply

System Information

System Name:

System Location:

Login Timeout (3-30 minutes):

Group Interval (120-1225 seconds): (Disable: 0 second)

Apply

Trusted sites | Protected Mode: Off

DGS-1210-24 - Microsoft Internet Explorer provided by D-Link Australia

http://10.90.90.90/

D-Link Building Networks for People

Smart

admin - 10.90.90.0

Save Tools Smart Wizard Online Help

DGS-1210-24

- System
 - System Settings
 - Trap Settings
 - Port Settings
 - SNMP Settings
 - Password Access Control
 - System Log Settings
- Configuration
 - Jumbo Frame
 - 802.1Q VLAN
 - 802.1Q Management VLAN
 - Voice VLAN
 - Link Aggregation
 - IGMP Snooping
 - Port Mirroring
 - Power Saving
 - Loopback Detection
 - SNTP Settings
 - Spanning Tree
- QoS
 - Storm Control
 - Bandwidth Control
 - 802.1p/DSCP Priority Settings
- Security
 - Trusted Host
 - Safeguard Engine
 - Port Security
 - 802.1X
 - MAC Address Table
- Monitoring
 - Statistics
 - Cable Diagnostics
 - System Health
- ACL
 - ACL Configuration Wizard
 - Access Profile List
 - ACL Filter

Trap Settings for SmartConsole

Enabled Disabled

Destination IP:

System Event: Device Bootup Illegal Login

Fiber Port Event: Link Up/ Link Down

Twisted Pair Port Event: Link Up/ Link Down

RSTP Port State Change: State Change

Firmware Upgrade State: Upgrade Success/ Upgrade Failure

Done

Trusted sites | Protected Mode: Off

DGS-1210-24 - Microsoft Internet Explorer provided by D-Link Australia

http://10.90.90.90/

D-Link Building Networks for People

Smart

admin - 10.90.90.0

Save Tools Smart Wizard Online Help

DGS-1210-24

- System
 - System Settings
 - Trap Settings
 - Port Settings
 - SNMP Settings
 - Password Access Control
 - System Log Settings
- Configuration
 - Jumbo Frame
 - 802.1Q VLAN
 - 802.1Q Management VLAN
 - Voice VLAN
 - Link Aggregation
 - IGMP Snooping
 - Port Mirroring
 - Power Saving
 - Loopback Detection
 - SNTP Settings
 - Spanning Tree
- QoS
 - Storm Control
 - Bandwidth Control
 - 802.1p/DSCP Priority Settings
- Security
 - Trusted Host
 - SAFeguard Edge
 - Port Security
 - 802.1X
 - MAC Address Table
- Monitoring
 - Statistics

Port Settings

From Port: 1 To Port: 24 Speed: Auto MDI/MDIX: Auto Flow Control: Disabled

Apply Refresh

Port	Link Status	Speed	MDI/MDIX	Flow Control
1	Down	1000M Full	Auto	Disabled
2	Down	100M Full	Auto	Disabled
3	Down	10M Full	Auto	Disabled
4	Down	10M Half	Auto	Disabled
5	Down	Disable	Auto	Disabled
6	Down	Auto	Auto	Disabled
7	Down	Auto	Auto	Disabled
8	Down	Auto	Auto	Disabled
9	Down	Auto	Auto	Disabled
10	Down	Auto	Auto	Disabled
11	Down	Auto	Auto	Disabled
12	Down	Auto	Auto	Disabled
13	Down	Auto	Auto	Disabled
14	Down	Auto	Auto	Disabled
15	Down	Auto	Auto	Disabled
16	Down	Auto	Auto	Disabled
17	Down	Auto	Auto	Disabled
18	Down	Auto	Auto	Disabled
19	Down	Auto	Auto	Disabled
20	Down	Auto	Auto	Disabled
21	Down	Auto	Auto	Disabled
22	Down	Auto	Auto	Disabled
23	Down	Auto	Auto	Disabled
24	Down	Auto	Auto	Disabled

Done Trusted sites | Protected Mode: Off 100%

DGS-1210-24 - Microsoft Internet Explorer provided by D-Link Australia

http://10.90.90.90/

D-Link Building Networks for People

Smart

admin - 10.90.90.0

Save Tools Smart Wizard Online Help

DGS-1210-24

- System
 - System Settings
 - Trap Settings
 - Port Settings
 - SNMP Settings
 - Password Access Control
 - System Log Settings
- Configuration
 - Jumbo Frame
 - 802.1Q VLAN
 - 802.1Q Management VLAN
 - Voice VLAN
 - Link Aggregation
 - IGMP Snooping
 - Port Mirroring
 - Power Saving
 - Loopback Detection
 - SNTP Settings
 - Spanning Tree
- QoS
 - Storm Control
 - Bandwidth Control
 - 802.1p/DSCP Priority Settings
- Security
 - Trusted Host
 - SAFeguard Edge
 - Port Security
 - 802.1X
 - MAC Address Table
- Monitoring
 - Statistics

SNMP Settings

SNMP Enabled Disabled

Apply

Community Settings

Access Right	Community Name	Delete
Read_Only	public	Delete
Read_Write	private	Delete

Add

Trap Settings

Enabled Disabled

Trap Name	IP	Event
public		<input type="checkbox"/> SNMP Authentication Traps <input type="checkbox"/> System Device Bootup <input type="checkbox"/> Fiber Port Link Up / Link Down <input type="checkbox"/> Twisted Pair Port Link Up / Link Down <input type="checkbox"/> RSTP Port State Change <input type="checkbox"/> Firmware Upgrade State

Done Trusted sites | Protected Mode: Off 100%

DGS-1210-24 - Microsoft Internet Explorer provided by D-Link Australia

http://10.90.90.90/

D-Link Building Networks for People

Smart

admin - 10.90.90.0

Save Tools Smart Wizard Online Help

DGS-1210-24

- System
 - System Settings
 - Trap Settings
 - Port Settings
 - SNMP Settings
 - Password Access Control
 - System Log Settings
- Configuration
 - Jumbo Frame
 - 802.1Q VLAN
 - 802.1Q Management VLAN
 - Voice VLAN
 - Link Aggregation
 - IGMP Snooping
 - Port Mirroring
 - Power Saving
 - Loopback Detection
 - SNTP Settings
 - Spanning Tree
- QoS
 - Storm Control
 - Bandwidth Control
 - 802.1p/DSCP Priority Settings
- Security
 - Trusted Host
 - SAFeguard Edge
 - Port Security
 - 802.1X
 - MAC Address Table
- Monitoring
 - Statistics

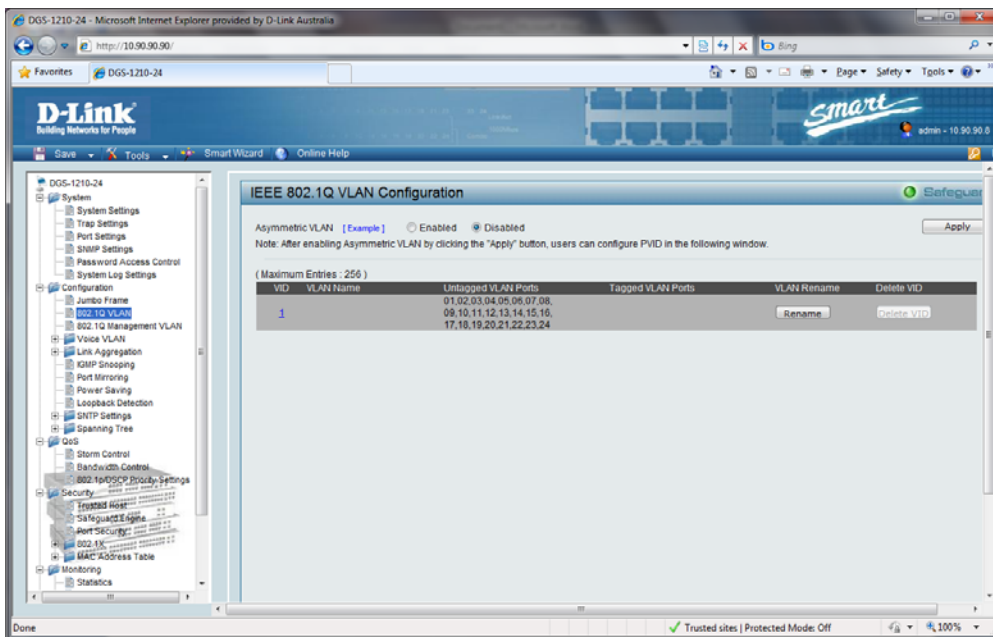
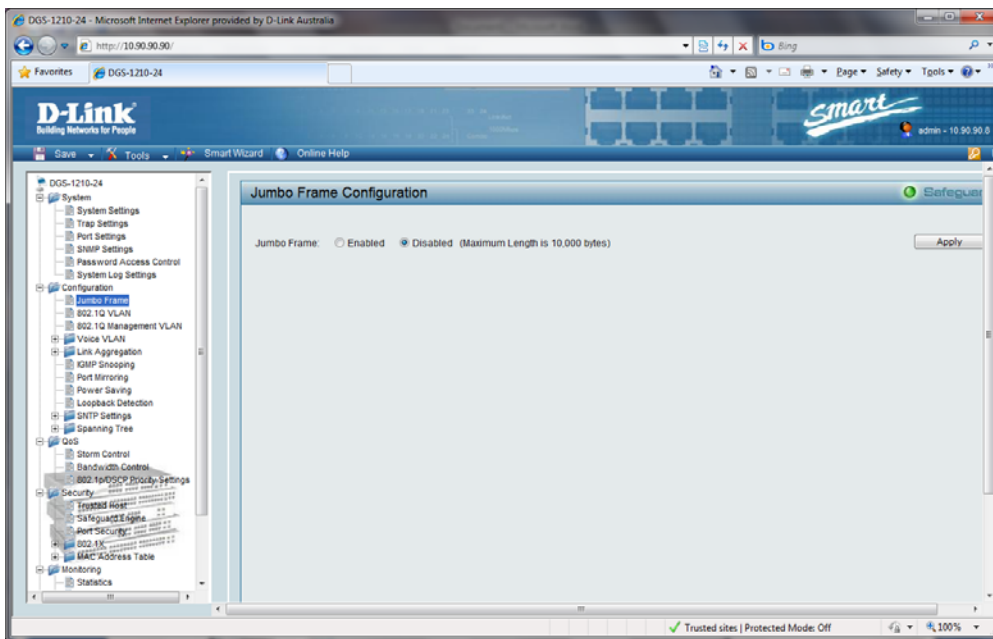
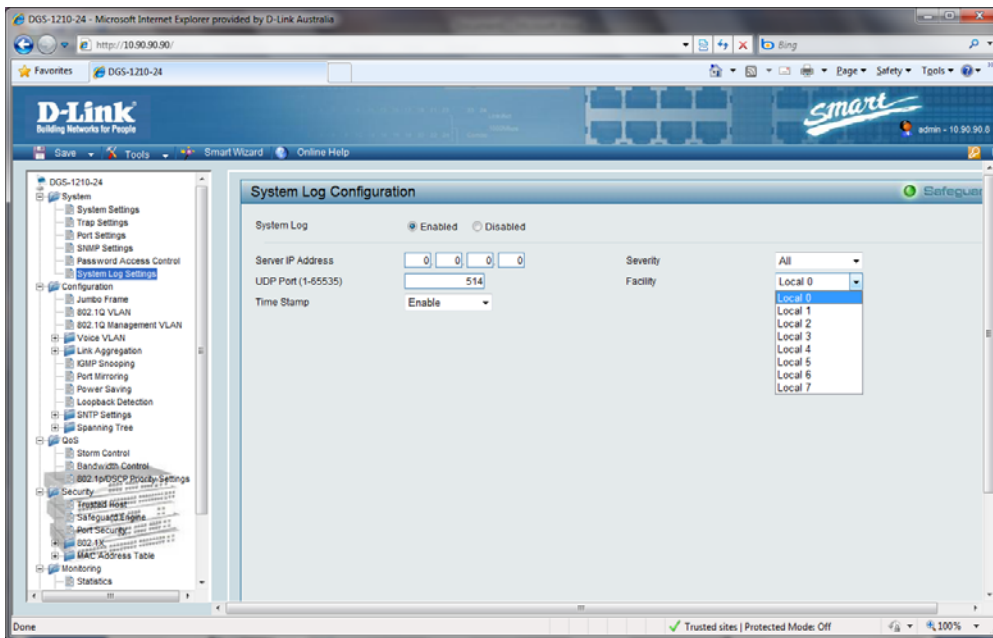
Password Access Control

Old Password:

New Password: (Password should be less than 20 characters)

Confirm Password:

Done Trusted sites | Protected Mode: Off 100%



Example for Asymmetric VLANs - Microsoft Internet Explorer provided by D-Link Australia

http://10.90.90.90/ssi/example_AsyVlan.html?ambits=bd3dtediddidbgrgnjgngkdbgrgnjgng

Example for Asymmetric VLANs

The Asymmetric VLAN setting of Smart Switch* is as following.

Device	Port connected to switch*	PVID	VID	Member
Smart Switch 1	5	2	2	1, 5
Smart Switch 2	6	3	3	1, 6
Smart Switch 3	7	4	4	1, 7
...
Servers	15-18	1	1	1 - 24
DFL-800 (Firewall)	20	1	1	1 - 24

Above VIDs are untagged.

After completing above PVID and VID asymmetric settings, the smart switch 1/2/3 is incapable of sharing information with each others, and users are able to access shared servers and connect to the internet.

Done Trusted sites | Protected Mode: Off 100%

DGS-1210-24 - Microsoft Internet Explorer provided by D-Link Australia

http://10.90.90.90/

D-Link Building Networks for People

Smart Wizard Online Help

VID Configuration

VID: 1

VLAN Name: []

Port	Selected	All	01	02	03	04	05	06	07	08	09	10	11	12	13	14	15	16	17	18	19	20	21	22	23	24
Untag	<input type="radio"/>	All	<input type="radio"/>	<input type="radio"/>	<input type="radio"/>	<input type="radio"/>	<input type="radio"/>	<input type="radio"/>	<input type="radio"/>	<input type="radio"/>	<input type="radio"/>	<input type="radio"/>	<input type="radio"/>	<input type="radio"/>	<input type="radio"/>	<input type="radio"/>	<input type="radio"/>	<input type="radio"/>	<input type="radio"/>	<input type="radio"/>	<input type="radio"/>	<input type="radio"/>	<input type="radio"/>	<input type="radio"/>	<input type="radio"/>	
Tag	<input type="radio"/>	All	<input type="radio"/>	<input type="radio"/>	<input type="radio"/>	<input type="radio"/>	<input type="radio"/>	<input type="radio"/>	<input type="radio"/>	<input type="radio"/>	<input type="radio"/>	<input type="radio"/>	<input type="radio"/>	<input type="radio"/>	<input type="radio"/>	<input type="radio"/>	<input type="radio"/>	<input type="radio"/>	<input type="radio"/>	<input type="radio"/>	<input type="radio"/>	<input type="radio"/>	<input type="radio"/>	<input type="radio"/>	<input type="radio"/>	
Not Member	<input type="radio"/>	All	<input type="radio"/>	<input type="radio"/>	<input type="radio"/>	<input type="radio"/>	<input type="radio"/>	<input type="radio"/>	<input type="radio"/>	<input type="radio"/>	<input type="radio"/>	<input type="radio"/>	<input type="radio"/>	<input type="radio"/>	<input type="radio"/>	<input type="radio"/>	<input type="radio"/>	<input type="radio"/>	<input type="radio"/>	<input type="radio"/>	<input type="radio"/>	<input type="radio"/>	<input type="radio"/>	<input type="radio"/>	<input type="radio"/>	

Previous Page Apply

Done Trusted sites | Protected Mode: Off 100%

DGS-1210-24 - Microsoft Internet Explorer provided by D-Link Australia

http://10.90.90.90/

D-Link Building Networks for People

Smart Wizard Online Help

IEEE 802.1Q Management VLAN Configuration

Management VLAN: Enabled Disabled

VID: 1

VLAN Name: []

Apply

Done Trusted sites | Protected Mode: Off 100%

DGS-1210-24 - Microsoft Internet Explorer provided by D-Link Australia

http://10.90.90.90/

D-Link Building Networks for People

Smart

admin - 10.90.90.0

Save Tools Smart Wizard Online Help

DGS-1210-24

- System
 - System Settings
 - Trap Settings
 - Port Settings
 - SNMP Settings
 - Password Access Control
 - System Log Settings
- Configuration
 - Jumbo Frame
 - 802.1Q VLAN
 - 802.1Q Management VLAN
 - Voice VLAN
 - Voice VLAN Settings
 - Voice VLAN OUI Settings
 - Link Aggregation
 - IGMP Snooping
 - Port Mirroring
 - Power Saving
 - Loopback Detection
 - SNTP Settings
 - Spanning Tree
- DOS
 - Storm Control
 - Bandwidth Control
 - 802.1D STP Priority Settings
- Security
 - Trusted Host
 - Safeguard Engine
 - Port Security
 - 802.1X
 - MAC Address Table

Voice VLAN Settings

Voice VLAN Enabled Disabled

Voice VLAN Global Settings

Vlan ID: 1 Aging Time: 1 (1-120 hours)

Priority: Medium

Voice Vlan Port Settings

From Port: 1 To Port: 24 Auto Detection: Disable

Port	Auto Detection	Status
1	Disabled	None
2	Disabled	None
3	Disabled	None
4	Disabled	None
5	Disabled	None
6	Disabled	None
7	Disabled	None
8	Disabled	None
9	Disabled	None
10	Disabled	None
11	Disabled	None
12	Disabled	None
13	Disabled	None
14	Disabled	None

Trusted sites | Protected Mode: Off

DGS-1210-24 - Microsoft Internet Explorer provided by D-Link Australia

http://10.90.90.90/

D-Link Building Networks for People

Smart

admin - 10.90.90.0

Save Tools Smart Wizard Online Help

DGS-1210-24

- System
 - System Settings
 - Trap Settings
 - Port Settings
 - SNMP Settings
 - Password Access Control
 - System Log Settings
- Configuration
 - Jumbo Frame
 - 802.1Q VLAN
 - 802.1Q Management VLAN
 - Voice VLAN
 - Voice VLAN Settings
 - Voice VLAN OUI Settings
 - Link Aggregation
 - IGMP Snooping
 - Port Mirroring
 - Power Saving
 - Loopback Detection
 - SNTP Settings
 - Spanning Tree
- DOS
 - Storm Control
 - Bandwidth Control
 - 802.1D STP Priority Settings
- Security
 - Trusted Host
 - Safeguard Engine
 - Port Security
 - 802.1X
 - MAC Address Table

Voice VLAN OUI Settings

Default OUI User defined OUI

Description: 3COM

Telephony OUI: 00-E0-8B-00-00-00

(Maximum user defined OUI: 10)

ID	Description	Telephony OUI	OUI Mask	Delete
	3COM			
	Cisco			
	Vertel			
	Pingtel			
	Siemens			
	NEC/Philips			
	Huawei/3COM			
	Avaya			

Done

Trusted sites | Protected Mode: Off

DGS-1210-24 - Microsoft Internet Explorer provided by D-Link Australia

http://10.90.90.90/

D-Link Building Networks for People

Smart

admin - 10.90.90.0

Save Tools Smart Wizard Online Help

DGS-1210-24

- System
 - System Settings
 - Trap Settings
 - Port Settings
 - SNMP Settings
 - Password Access Control
 - System Log Settings
- Configuration
 - Jumbo Frame
 - 802.1Q VLAN
 - 802.1Q Management VLAN
 - Voice VLAN
 - Voice VLAN Settings
 - Voice VLAN OUI Settings
 - Link Aggregation
 - Link Trunking
 - IGMP Snooping
 - Port Mirroring
 - Power Saving
 - Loopback Detection
 - SNTP Settings
 - Spanning Tree
- DOS
 - Storm Control
 - Bandwidth Control
 - 802.1D STP Priority Settings
- Security
 - Trusted Host
 - Safeguard Engine
 - Port Security
 - 802.1X
 - MAC Address Table

Port Trunking

Link Aggregation State: Enabled Disabled

Edit Trunking Information

ID: 01 Type: Disable

Port	1	2	3	4	5	6	7	8	9	10	11	12
			LACP									
			Static									
			Disable									
	13	14	15	16	17	18	19	20	21	22	23	24

Note: maximum 8 ports in static group and 8 ports in LACP group.

Trunking list	ID	Type	Ports
01	01	Disable	
02	02	Disable	
03	03	Disable	
04	04	Disable	
05	05	Disable	
06	06	Disable	
07	07	Disable	
08	08	Disable	

Done

Trusted sites | Protected Mode: Off

DGS-1210-24 - Microsoft Internet Explorer provided by D-Link Australia

http://10.90.90.90/

D-Link Building Networks for People

Smart

admin - 10.90.90.0

Save Tools Smart Wizard Online Help

DGS-1210-24

- System
 - System Settings
 - Trap Settings
 - Port Settings
 - SNMP Settings
 - Password Access Control
 - System Log Settings
- Configuration
 - Jumbo Frame
 - 802.1Q VLAN
 - 802.1Q Management VLAN
 - Voice VLAN
 - Voice VLAN Settings
 - Voice VLAN QoS Settings
 - Link Aggregation
 - LACP Port Settings
 - Port Trunkings
 - Port Mirroring
 - Power Saving
 - Loopback Detection
 - SNTP Settings
 - Spanning Tree
 - STP Settings
 - STP Settings
 - DOS
 - Storm Control
 - Bandwidth Control
 - DDoS Protection Settings
 - Security
 - Trusted Host
 - Safeguard Engine
 - Port Security

LACP Port Settings

Link Aggregation Port Configuration

From Port: 01 To Port: 24 Port Priority(0-65535): 128 Activity: Passive Timeout: short (3 sec)

Apply

Port	Port Priority	Activity	Timeout
01	128	Active	Long (90 sec)
02	128	Active	Long (90 sec)
03	128	Active	Long (90 sec)
04	128	Active	Long (90 sec)
05	128	Active	Long (90 sec)
06	128	Active	Long (90 sec)
07	128	Active	Long (90 sec)
08	128	Active	Long (90 sec)
09	128	Active	Long (90 sec)
10	128	Active	Long (90 sec)
11	128	Active	Long (90 sec)
12	128	Active	Long (90 sec)
13	128	Active	Long (90 sec)
14	128	Active	Long (90 sec)
15	128	Active	Long (90 sec)
16	128	Active	Long (90 sec)
17	128	Active	Long (90 sec)
18	128	Active	Long (90 sec)
19	128	Active	Long (90 sec)
20	128	Active	Long (90 sec)
21	128	Active	Long (90 sec)
22	128	Active	Long (90 sec)

Done Trusted sites | Protected Mode: Off 100%

DGS-1210-24 - Microsoft Internet Explorer provided by D-Link Australia

http://10.90.90.90/

D-Link Building Networks for People

Smart

admin - 10.90.90.0

Save Tools Smart Wizard Online Help

DGS-1210-24

- System
 - System Settings
 - Trap Settings
 - Port Settings
 - SNMP Settings
 - Password Access Control
 - System Log Settings
- Configuration
 - Jumbo Frame
 - 802.1Q VLAN
 - 802.1Q Management VLAN
 - Voice VLAN
 - Voice VLAN Settings
 - Voice VLAN QoS Settings
 - Link Aggregation
 - LACP Port Settings
 - Port Trunkings
 - Port Mirroring
 - Power Saving
 - Loopback Detection
 - SNTP Settings
 - Spanning Tree
 - STP Settings
 - STP Settings
 - DOS
 - Storm Control
 - Bandwidth Control
 - DDoS Protection Settings
 - Security
 - Trusted Host
 - Safeguard Engine
 - Port Security

IGMP Snooping Configuration

IGMP Snooping Enabled Disabled

IGMP Global Settings

Host Timeout (130-153025 sec): 260 Router Timeout (60-600 sec): 2

Robustness Variable (2-255): 2 Last Member Query Interval (1-25 sec):

Query Interval (60-600 sec): 125 Max Response Time (10-25 sec):

Note: The Host Timeout was computed automatically in Querier Enabled by (Robustness Variable * Query interval * Max Response Time).

Apply

The VLAN Settings of IGMP snooping

VLAN ID	VLAN Name	State	Querier State	Router Ports Settings	Multicast Entry Table
1		Enabled	Disabled	Edit	View

Done Trusted sites | Protected Mode: Off 100%

DGS-1210-24 - Microsoft Internet Explorer provided by D-Link Australia

http://10.90.90.90/

D-Link Building Networks for People

Smart

admin - 10.90.90.0

Save Tools Smart Wizard Online Help

DGS-1210-24

- System
 - System Settings
 - Trap Settings
 - Port Settings
 - SNMP Settings
 - Password Access Control
 - System Log Settings
- Configuration
 - Jumbo Frame
 - 802.1Q VLAN
 - 802.1Q Management VLAN
 - Voice VLAN
 - Voice VLAN Settings
 - Voice VLAN QoS Settings
 - Link Aggregation
 - LACP Port Settings
 - Port Trunkings
 - Port Mirroring
 - Power Saving
 - Loopback Detection
 - SNTP Settings
 - Spanning Tree
 - STP Settings
 - STP Settings
 - DOS
 - Storm Control
 - Bandwidth Control
 - DDoS Protection Settings
 - Security
 - Trusted Host
 - Safeguard Engine
 - Port Security

Port Mirroring Configuration

Port Mirroring Enabled Disabled

Target Port: 01

Source Port Selection

Smirrer Mode	Select All	01	02	03	04	05	06	07	08	09	10	11	12	13	14	15	16	17	18	19	20	21	22	23	24
TX	All	<input type="checkbox"/>	<input type="checkbox"/>	<input type="checkbox"/>	<input type="checkbox"/>	<input type="checkbox"/>	<input type="checkbox"/>	<input type="checkbox"/>	<input type="checkbox"/>	<input type="checkbox"/>	<input type="checkbox"/>	<input type="checkbox"/>	<input type="checkbox"/>	<input type="checkbox"/>	<input type="checkbox"/>	<input type="checkbox"/>	<input type="checkbox"/>	<input type="checkbox"/>	<input type="checkbox"/>	<input type="checkbox"/>	<input type="checkbox"/>	<input type="checkbox"/>	<input type="checkbox"/>	<input type="checkbox"/>	<input type="checkbox"/>
RX	All	<input type="checkbox"/>	<input type="checkbox"/>	<input type="checkbox"/>	<input type="checkbox"/>	<input type="checkbox"/>	<input type="checkbox"/>	<input type="checkbox"/>	<input type="checkbox"/>	<input type="checkbox"/>	<input type="checkbox"/>	<input type="checkbox"/>	<input type="checkbox"/>	<input type="checkbox"/>	<input type="checkbox"/>	<input type="checkbox"/>	<input type="checkbox"/>	<input type="checkbox"/>	<input type="checkbox"/>	<input type="checkbox"/>	<input type="checkbox"/>	<input type="checkbox"/>	<input type="checkbox"/>	<input type="checkbox"/>	<input type="checkbox"/>
Both	All	<input type="checkbox"/>	<input type="checkbox"/>	<input type="checkbox"/>	<input type="checkbox"/>	<input type="checkbox"/>	<input type="checkbox"/>	<input type="checkbox"/>	<input type="checkbox"/>	<input type="checkbox"/>	<input type="checkbox"/>	<input type="checkbox"/>	<input type="checkbox"/>	<input type="checkbox"/>	<input type="checkbox"/>	<input type="checkbox"/>	<input type="checkbox"/>	<input type="checkbox"/>	<input type="checkbox"/>	<input type="checkbox"/>	<input type="checkbox"/>	<input type="checkbox"/>	<input type="checkbox"/>	<input type="checkbox"/>	<input type="checkbox"/>
None	All	<input type="checkbox"/>	<input type="checkbox"/>	<input type="checkbox"/>	<input type="checkbox"/>	<input type="checkbox"/>	<input type="checkbox"/>	<input type="checkbox"/>	<input type="checkbox"/>	<input type="checkbox"/>	<input type="checkbox"/>	<input type="checkbox"/>	<input type="checkbox"/>	<input type="checkbox"/>	<input type="checkbox"/>	<input type="checkbox"/>	<input type="checkbox"/>	<input type="checkbox"/>	<input type="checkbox"/>	<input type="checkbox"/>	<input type="checkbox"/>	<input type="checkbox"/>	<input type="checkbox"/>	<input type="checkbox"/>	<input type="checkbox"/>

Apply

Done Trusted sites | Protected Mode: Off 100%

DGS-1210-24 - Microsoft Internet Explorer provided by D-Link Australia

http://10.90.90.90/

D-Link Building Networks for People

Smart

admin - 10.90.90.0

Save Tools Smart Wizard Online Help

DGS-1210-24

- System
 - System Settings
 - Trap Settings
 - Port Settings
 - SNMP Settings
 - Password Access Control
 - System Log Settings
- Configuration
 - Jumbo Frame
 - 802.1Q VLAN
 - 802.1Q Management VLAN
 - Voice VLAN
 - Voice VLAN Settings
 - Voice VLAN QoS Settings
 - Link Aggregation
 - Port Trunkings
 - LACP Port Settings
 - IGMP Snooping
 - Port Mirroring
 - Power Saving
 - Loopback Detection
 - SNTP Settings
 - Spanning Tree
- QoS
 - Storm Control
 - Bandwidth Control
 - 802.1P/802.1Q Priority Settings
- Security
 - Trusted Host
 - Safeguard Engine
 - Port Security

Power Saving Configuration

Power Saving: Enabled Disabled Apply

The Power Saving mode is capable of reducing power consumption automatically when connected devices are switched off or cable length less than 20meters. By reducing power consumption, less heat is produced, resulting in extended product life and lower operating costs. By default, the Power Saving mode is enabled.

Trusted sites | Protected Mode: Off

DGS-1210-24 - Microsoft Internet Explorer provided by D-Link Australia

http://10.90.90.90/

D-Link Building Networks for People

Smart

admin - 10.90.90.0

Save Tools Smart Wizard Online Help

DGS-1210-24

- System
 - System Settings
 - Trap Settings
 - Port Settings
 - SNMP Settings
 - Password Access Control
 - System Log Settings
- Configuration
 - Jumbo Frame
 - 802.1Q VLAN
 - 802.1Q Management VLAN
 - Voice VLAN
 - Voice VLAN Settings
 - Voice VLAN QoS Settings
 - Link Aggregation
 - Port Trunkings
 - LACP Port Settings
 - IGMP Snooping
 - Port Mirroring
 - Power Saving
 - Loopback Detection
 - SNTP Settings
 - Spanning Tree
- QoS
 - Storm Control
 - Bandwidth Control
 - 802.1P/802.1Q Priority Settings
- Security
 - Trusted Host
 - Safeguard Engine
 - Port Security

Loopback Detection Settings

State: Enabled Disabled Apply

Loopback Detection Global Settings

Interval (1-32767): sec

Recover Time (0 or 60-1000000): sec Apply

From Port: To Port: State: Apply Refresh

Port	Loopdetect Detection State	Loop Status
1	Disabled	Normal
2	Disabled	Normal
3	Disabled	Normal
4	Disabled	Normal
5	Disabled	Normal
6	Disabled	Normal
7	Disabled	Normal
8	Disabled	Normal
9	Disabled	Normal
10	Disabled	Normal
11	Disabled	Normal
12	Disabled	Normal
13	Disabled	Normal
14	Disabled	Normal
15	Disabled	Normal
16	Disabled	Normal

Done

Trusted sites | Protected Mode: Off

DGS-1210-24 - Microsoft Internet Explorer provided by D-Link Australia

http://10.90.90.90/

D-Link Building Networks for People

Smart

admin - 10.90.90.0

Save Tools Smart Wizard Online Help

DGS-1210-24

- System
 - System Settings
 - Trap Settings
 - Port Settings
 - SNMP Settings
 - Password Access Control
 - System Log Settings
- Configuration
 - Jumbo Frame
 - 802.1Q VLAN
 - 802.1Q Management VLAN
 - Voice VLAN
 - Voice VLAN Settings
 - Voice VLAN QoS Settings
 - Link Aggregation
 - Port Trunkings
 - LACP Port Settings
 - IGMP Snooping
 - Port Mirroring
 - Power Saving
 - Loopback Detection
 - SNTP Settings
 - Time Settings
 - Timezone Settings
 - Spanning Tree
- QoS
 - Storm Control
 - Bandwidth Control
 - 802.1P/802.1Q Priority Settings
- Security
 - Trusted Host

Time Settings

Clock Source: Local SNTP

Current Time: 01/01/2009 00:11:20

SNTP Server Configuration

SNTP First Server:

SNTP Second Server:

SNTP Poll Interval In Seconds (30-99999):

Manually set current time

Date (DDMM/YYYY):

Time (HHMMSS):

Set time from PC

Date (DDMM/YYYY):

Time (HHMMSS):

Done

Trusted sites | Protected Mode: Off

DGS-1210-24 - Microsoft Internet Explorer provided by D-Link Australia

http://10.90.90.90/

D-Link Building Networks for People

Smart

admin - 10.90.90.0

Save Tools Smart Wizard Online Help

DGS-1210-24

- System
 - System Settings
 - Trap Settings
 - Port Settings
 - SNMP Settings
 - Password Access Control
 - System Log Settings
- Configuration
 - Jumbo Frame
 - 802.1Q VLAN
 - 802.1Q Management VLAN
 - Voice VLAN
 - Voice VLAN Settings
 - Voice VLAN QoS Settings
 - Link Aggregation
 - Port Trunkings
 - LACP Port Settings
 - IGMP Snooping
 - Port Mirroring
 - Power Saving
 - Loopback Detection
 - SNTP Settings
 - Time Settings
 - TimeZone Settings
 - Specialty-Tree
 - QoS
 - Storm Control
 - Bandwidth Control
 - 802.1p/DSCP Priority Settings
 - Security
 - Trusted Host

TimeZone Settings

Daylight Saving Time State: Disabled

Daylight Saving Time Offset In Minutes: 60

Time Zone Offset from GMT In +HH:MM: + 00 00

DST Annual Settings

From: Month: Jan

From: Day: 01

From: Time In HH:MM: 00 00

To: Month: Jan

To: Day: 01

To: Time In HH:MM: 00 00

Done Trusted sites | Protected Mode: Off 100%

DGS-1210-24 - Microsoft Internet Explorer provided by D-Link Australia

http://10.90.90.90/

D-Link Building Networks for People

Smart

admin - 10.90.90.0

Save Tools Smart Wizard Online Help

DGS-1210-24

- System
 - System Settings
 - Trap Settings
 - Port Settings
 - SNMP Settings
 - Password Access Control
 - System Log Settings
- Configuration
 - Jumbo Frame
 - 802.1Q VLAN
 - 802.1Q Management VLAN
 - Voice VLAN
 - Voice VLAN Settings
 - Voice VLAN QoS Settings
 - Link Aggregation
 - Port Trunkings
 - LACP Port Settings
 - IGMP Snooping
 - Port Mirroring
 - Power Saving
 - Loopback Detection
 - SNTP Settings
 - Time Settings
 - TimeZone Settings
 - STP Global Settings
 - STP Port Settings
 - QoS
 - Storm Control
 - Bandwidth Control
 - 802.1p/DSCP Priority Settings
 - Security
 - Trusted Host

STP Global Settings

RSTP Status: Enabled Disabled

STP Version: RSTP

Bridge Priority: RSTP

Root Bridge: 00 00 00 00 00 00 00 00

Root Cost: 0

Tx Hold Count (1-10): 6

Root Maximum Age: 20

Maximum Age (6-40 secs): 20

Root Forward Delay: 15

Hello Time (1-10 secs): 2

Root Port: 0

Forward Delay (4-30 secs): 15

Done Trusted sites | Protected Mode: Off 100%

DGS-1210-24 - Microsoft Internet Explorer provided by D-Link Australia

http://10.90.90.90/

D-Link Building Networks for People

Smart

admin - 10.90.90.0

Save Tools Smart Wizard Online Help

DGS-1210-24

- System
 - System Settings
 - Trap Settings
 - Port Settings
 - SNMP Settings
 - Password Access Control
 - System Log Settings
- Configuration
 - Jumbo Frame
 - 802.1Q VLAN
 - 802.1Q Management VLAN
 - Voice VLAN
 - Voice VLAN Settings
 - Voice VLAN QoS Settings
 - Link Aggregation
 - Port Trunkings
 - LACP Port Settings
 - IGMP Snooping
 - Port Mirroring
 - Power Saving
 - Loopback Detection
 - SNTP Settings
 - Time Settings
 - TimeZone Settings
 - STP Global Settings
 - STP Port Settings
 - QoS
 - Storm Control
 - Bandwidth Control
 - 802.1p/DSCP Priority Settings
 - Security
 - Trusted Host

STP Global Settings

RSTP Status: Enabled Disabled

STP Version: RSTP

Bridge Priority: 32768

Root Bridge: 00 00 00 00 00 00 00 00

Root Cost: 0

Tx Hold Count (1-10): 0

Root Maximum Age: 20

Maximum Age (6-40 secs): 8192

Root Forward Delay: 15

Hello Time (1-10 secs): 12288

Root Port: 0

Forward Delay (4-30 secs): 16384

Forward Delay (4-30 secs) list: 20480, 24576, 28672, 32768, 36864, 40960, 45056, 49152, 53248, 57344, 61440

Done Trusted sites | Protected Mode: Off 100%

DGS-1210-24 - Microsoft Internet Explorer provided by D-Link Australia

http://10.90.90.90/

D-Link Building Networks for People

Smart

admin - 10.90.90.0

Save Tools Smart Wizard Online Help

DGS-1210-24

- System
 - System Settings
 - Trap Settings
 - Port Settings
 - SNMP Settings
 - Password Access Control
 - System Log Settings
- Configuration
 - Jumbo Frame
 - 802.1Q VLAN
 - 802.1Q Management VLAN
 - Voice VLAN
 - Voice VLAN Settings
 - Voice VLAN QoS Settings
 - Link Aggregation
 - Port Trunks
 - LACP Port Settings
 - QoS
 - QoS Settings
 - Time Zone Settings
 - Special Trees
 - STP Global Settings
 - STP Port Settings**
 - Storm Control
 - Bandwidth Control
 - 802.1p/DSCP Priority Settings

Done

Trusted sites | Protected Mode: Off

100%

STP Port Settings

From Port: 01 To Port: 24 State: Enabled

External Cost (0-2000000, 0=AUTO): 2000000 Migrate: Disabled Edge: Auto

Priority: 128 P2P: Auto Restricted Role: False

Restricted TCN: False

Apply Refresh

Port	State	Priority	External Cost	Edge	P2P	Restricted Role	Restricted TCN	Port State
01								
02								
03								
04								
05								
06								
07								
08								
09								
10								
11								
12								
13								
14								
15								
16								
17								

DGS-1210-24 - Microsoft Internet Explorer provided by D-Link Australia

http://10.90.90.90/

D-Link Building Networks for People

Smart

admin - 10.90.90.0

Save Tools Smart Wizard Online Help

DGS-1210-24

- System
- Configuration
 - QoS
 - Storm Control**
 - Bandwidth Control
 - 802.1p/DSCP Priority Settings
 - Security
 - Trusted Host
 - Safeguard Engine
 - Port Security
 - 802.1X
 - MAC Address Table
 - Monitoring
 - Statistics
 - Cable Diagnostics
 - System Log
 - ACL
 - ACL Configuration Wizard
 - Access Profile List
 - ACL Finder

Storm Control

Storm Control Enable Disable

Storm Control: Multicast & Broadcast & Unknow Unicast

Threshold (64Kbps * N): unlimited Kbps

Done

Trusted sites | Protected Mode: Off

100%

Storm Control

Storm Control Enable Disable

Storm Control: Multicast & Broadcast & Unknow Unicast

Threshold (64Kbps * N): unlimited Kbps

DGS-1210-24 - Microsoft Internet Explorer provided by D-Link Australia

http://10.90.90.90/

D-Link Building Networks for People

Smart

admin - 10.90.90.0

Save Tools Smart Wizard Online Help

DGS-1210-24

- System
- Configuration
 - QoS
 - Storm Control**
 - Bandwidth Control
 - 802.1p/DSCP Priority Settings
 - Security
 - Trusted Host
 - Safeguard Engine
 - Port Security
 - 802.1X
 - MAC Address Table
 - Monitoring
 - Statistics
 - Cable Diagnostics
 - System Log
 - ACL
 - ACL Configuration Wizard
 - Access Profile List
 - ACL Finder

Storm Control

Storm Control Enable Disable

Storm Control: Multicast & Broadcast & Unknow Unicast

Threshold (64Kbps * N): 64Kbps * (1 - 10000) = unlimited Kbps

Done

Trusted sites | Protected Mode: Off

100%

Storm Control

Storm Control Enable Disable

Storm Control: Multicast & Broadcast & Unknow Unicast

Threshold (64Kbps * N): 64Kbps * (1 - 10000) = unlimited Kbps

DGS-1210-24 - Microsoft Internet Explorer provided by D-Link Australia

http://10.90.90.90/

D-Link Building Networks for People

Smart

admin - 10.90.90.0

Save Tools Smart Wizard Online Help

DGS-1210-24

- System
- Configuration
 - Storm Control
 - Bandwidth Control
 - 802.1p/DSCP Priority Settings
- Security
 - Trusted Host
 - Safeguard Engine
 - Port Security
 - 802.1X
 - MAC Address Table
- Monitoring
 - Statistics
 - Cable Diagnostics
 - System Log
- ACL
 - ACL Configuration Wizard
 - Access Profile List
 - ACL Finder

Bandwidth Control

From Port: 01 To Port: 24 Type: Rx No Limit: Disabled Rate(54-1024000): Kbits/sec

Port	Tx Rate (Kbits/sec)	Rx Rate (Kbits/sec)
01	No Limit	No Limit
02	No Limit	No Limit
03	No Limit	No Limit
04	No Limit	No Limit
05	No Limit	No Limit
06	No Limit	No Limit
07	No Limit	No Limit
08	No Limit	No Limit
09	No Limit	No Limit
10	No Limit	No Limit
11	No Limit	No Limit
12	No Limit	No Limit
13	No Limit	No Limit
14	No Limit	No Limit
15	No Limit	No Limit
16	No Limit	No Limit
17	No Limit	No Limit
18	No Limit	No Limit
19	No Limit	No Limit
20	No Limit	No Limit
21	No Limit	No Limit
22	No Limit	No Limit
23	No Limit	No Limit
24	No Limit	No Limit

Done Trusted sites | Protected Mode: Off 100%

DGS-1210-24 - Microsoft Internet Explorer provided by D-Link Australia

http://10.90.90.90/

D-Link Building Networks for People

Smart

admin - 10.90.90.0

Save Tools Smart Wizard Online Help

DGS-1210-24

- System
- Configuration
 - Storm Control
 - Bandwidth Control
 - 802.1p/DSCP Priority Settings
- Security
 - Trusted Host
 - Safeguard Engine
 - Port Security
 - 802.1X
 - MAC Address Table
- Monitoring
 - Statistics
 - Cable Diagnostics
 - System Log
- ACL
 - ACL Configuration Wizard
 - Access Profile List
 - ACL Finder

IEEE 802.1p Default Priority

Select QoS Mode: 802.1p DSCP

Queuing mechanism: Strict Priority WRR (By default is strict priority)

By default the 802.1p is chosen. To enable DSCP mode, please select the DSCP mode and press "Apply" to go to DSCP Priority Settings page.

From Port: 1 To Port: 24 Priority: Medium

Port	Priority
1	Medium
2	Medium
3	Medium
4	Medium
5	Medium
6	Medium
7	Medium
8	Medium
9	Medium
10	Medium
11	Medium
12	Medium
13	Medium
14	Medium
15	Medium
16	Medium

For ingress untagged packets, the per port "Default Priority" settings will be applied to packets of each port to provide port-based traffic prioritization.
For ingress tagged packets, D-Link Smart Switches will refer to their 802.1p information and prioritize them with 4 different priority queues.

Done Trusted sites | Protected Mode: Off 100%

DGS-1210-24 - Microsoft Internet Explorer provided by D-Link Australia

http://10.90.90.90/

D-Link Building Networks for People

Smart

admin - 10.90.90.0

Save Tools Smart Wizard Online Help

DGS-1210-24

- System
- Configuration
 - Storm Control
 - Bandwidth Control
 - 802.1p/DSCP Priority Settings
- Security
 - Trusted Host
 - Safeguard Engine
 - Port Security
 - 802.1X
 - MAC Address Table
- Monitoring
 - Statistics
 - Cable Diagnostics
 - System Log
- ACL
 - ACL Configuration Wizard
 - Access Profile List
 - ACL Finder

Trusted Host

Trusted Host: Enabled Disabled

Trusted Host Settings (Maximum Entries: 10)

ID	IP Address	IP Mask	Delete

Add Host

Note: Create a list of IP Addresses that can access the switch. Your local host IP Addresses must be one of the IP Addresses to avoid disconnection.

Done Trusted sites | Protected Mode: Off 100%

DGS-1210-24 - Microsoft Internet Explorer provided by D-Link Australia

http://10.90.90.90/

D-Link Building Networks for People

Smart

admin - 10.90.90.0

Save Tools Smart Wizard Online Help

DGS-1210-24

- System
- Configuration
 - QoS
 - Storm Control
 - Bandwidth Control
 - 802.1p/DSCP Priority Settings
 - Security
 - Trusted Host
 - Safeguard Engine**
 - Port Security
 - 802.1X
 - MAC Address Table
 - Monitoring
 - Statistics
 - Cable Diagnostics
 - System Log
 - ACL
 - ACL Configuration Wizard
 - Access Profile List
 - ACL Finder

Safeguard Engine

Safeguard Engine: Enabled Disabled Apply

D-Link **Safeguard Engine** is a robust and innovative technology developed by D-Link, which will automatically throttle the impact of packet flooding into the switch's CPU. It will keep D-Link Switches better protected from being too frequently interrupted by malicious viruses or worm attacks.

Done Trusted sites | Protected Mode: Off 100%

DGS-1210-24 - Microsoft Internet Explorer provided by D-Link Australia

http://10.90.90.90/

D-Link Building Networks for People

Smart

admin - 10.90.90.0

Save Tools Smart Wizard Online Help

DGS-1210-24

- System
- Configuration
 - QoS
 - Storm Control
 - Bandwidth Control
 - 802.1p/DSCP Priority Settings
 - Security
 - Trusted Host
 - Safeguard Engine
 - Port Security**
 - 802.1X
 - MAC Address Table
 - Monitoring
 - Statistics
 - Cable Diagnostics
 - System Log
 - ACL
 - ACL Configuration Wizard
 - Access Profile List
 - ACL Finder

Port Security

From Port: 01 To Port: 24 Admin State: Disabled Max Learning Address (0-64): 0 Apply

Port	Admin State	Max Learning Address
01	Disabled	0
02	Disabled	0
03	Disabled	0
04	Disabled	0
05	Disabled	0
06	Disabled	0
07	Disabled	0
08	Disabled	0
09	Disabled	0
10	Disabled	0
11	Disabled	0
12	Disabled	0
13	Disabled	0
14	Disabled	0
15	Disabled	0
16	Disabled	0
17	Disabled	0
18	Disabled	0
19	Disabled	0
20	Disabled	0
21	Disabled	0
22	Disabled	0
23	Disabled	0
24	Disabled	0

Done Trusted sites | Protected Mode: Off 100%

DGS-1210-24 - Microsoft Internet Explorer provided by D-Link Australia

http://10.90.90.90/

D-Link Building Networks for People

Smart

admin - 10.90.90.0

Save Tools Smart Wizard Online Help

DGS-1210-24

- System
- Configuration
 - QoS
 - Storm Control
 - Bandwidth Control
 - 802.1p/DSCP Priority Settings
 - Security
 - Trusted Host
 - Safeguard Engine
 - Port Security
 - 802.1X**
 - MAC Address Table
 - Monitoring
 - Statistics
 - Cable Diagnostics
 - System Log
 - ACL
 - ACL Configuration Wizard
 - Access Profile List
 - ACL Finder

802.1X Settings

802.1X: Enabled Disabled

802.1X Global Settings

Radius Server IP: [] [] [] [] QuietPeriod (0 - 65535 sec): 60

Key: [] SuppTimeout (1 - 65535 sec): 12

Confirm Key: [] ServerTimeout (1 - 65535 sec): 10

TPPeriod (1 - 65535 sec): 24 MaxReq (1 - 10): 2

ReAuthEnabled: Disabled ReAuthPeriod (1 - 4294967295 sec): 3600 Apply

802.1X Port Access Control

From Port: 01 To Port: 24 Control: Auto Apply Refresh

Port	Control	Port Status	Session Time	User ID
01	Force Authorized	*	0	*****
02	Force Authorized	*	0	*****
03	Force Authorized	*	0	*****
04	Force Authorized	*	0	*****
05	Force Authorized	*	0	*****
06	Force Authorized	*	0	*****
07	Force Authorized	*	0	*****
08	Force Authorized	*	0	*****
09	Force Authorized	*	0	*****

Done Trusted sites | Protected Mode: Off 100%

DGS-1210-24 - Microsoft Internet Explorer provided by D-Link Australia

http://10.90.90.90/

D-Link Building Networks for People

Smart

admin - 10.90.90.0

Save Tools Smart Wizard Online Help

DGS-1210-24

- System
- Configuration
 - QoS
 - Storm Control
 - Bandwidth Control
 - 802.1p/DSCP Priority Settings
 - Security
 - Trusted Host
 - Safeguard Engine
 - Port Security
 - 802.1X
 - 802.1X Settings
 - MAC Address Table
 - Static MAC
 - Dynamic Forwarding Table
 - Monitoring
 - Statistics
 - Cable Diagnostics
 - System Log
 - ACL
 - ACL Configuration Wizard
 - Access Profile List
 - ACL Filter

Static MAC Configuration

Disable auto learning on ports other than the uplink ports configured below On Off

Uplink Port	01	02	03	04	05	06	07	08	09	10	11	12	13	14	15	16	17	18	19	20	21	22	23	24
	<input type="checkbox"/>	<input type="checkbox"/>	<input type="checkbox"/>	<input type="checkbox"/>	<input type="checkbox"/>	<input type="checkbox"/>	<input type="checkbox"/>	<input type="checkbox"/>	<input type="checkbox"/>	<input type="checkbox"/>	<input type="checkbox"/>	<input type="checkbox"/>	<input type="checkbox"/>	<input type="checkbox"/>	<input type="checkbox"/>	<input type="checkbox"/>	<input type="checkbox"/>	<input type="checkbox"/>	<input type="checkbox"/>	<input type="checkbox"/>	<input type="checkbox"/>	<input type="checkbox"/>	<input type="checkbox"/>	<input type="checkbox"/>

Static MAC Address Lists (Maximum Entries: 256)

ID	Port	MAC Address	VID
----	------	-------------	-----

Apply Delete all

Done Trusted sites | Protected Mode: Off 100%

DGS-1210-24 - Microsoft Internet Explorer provided by D-Link Australia

http://10.90.90.90/

D-Link Building Networks for People

Smart

admin - 10.90.90.0

Save Tools Smart Wizard Online Help

DGS-1210-24

- System
- Configuration
 - QoS
 - Storm Control
 - Bandwidth Control
 - 802.1p/DSCP Priority Settings
 - Security
 - Trusted Host
 - Safeguard Engine
 - Port Security
 - 802.1X
 - 802.1X Settings
 - MAC Address Table
 - Static MAC
 - Dynamic Forwarding Table
 - Monitoring
 - Statistics
 - Cable Diagnostics
 - System Log
 - ACL
 - ACL Configuration Wizard
 - Access Profile List
 - ACL Filter

Dynamic Forwarding Table Configuration

Port: All

ID	Port	MAC Address	VID	Type	Add
1	1	00-0C-29-80-1C-99	1	Dynamic	<input type="checkbox"/>
2	1	00-0F-80-E2-23-CD	1	Dynamic	<input type="checkbox"/>
3	1	00-13-46-9E-06-34	1	Dynamic	<input type="checkbox"/>
4	1	00-16-17-87-85-34	1	Dynamic	<input type="checkbox"/>
5	1	00-19-5B-42-A8-E8	1	Dynamic	<input type="checkbox"/>
6	1	00-19-5B-42-AA-84	1	Dynamic	<input type="checkbox"/>
7	1	00-19-5B-C4-25-61	1	Dynamic	<input type="checkbox"/>
8	1	00-1A-4B-49-DE-FF	1	Dynamic	<input type="checkbox"/>
9	1	00-20-4A-42-57-F9	1	Dynamic	<input type="checkbox"/>
10	1	00-21-01-BD-A6-00	1	Dynamic	<input type="checkbox"/>
11	1	00-22-F3-04-4B-69	1	Dynamic	<input type="checkbox"/>
12	1	00-24-E6-7E-9D-18	1	Dynamic	<input type="checkbox"/>
13	1	00-50-56-41-F6-45	1	Dynamic	<input type="checkbox"/>
14	1	00-50-56-A6-30-A6	1	Dynamic	<input type="checkbox"/>
15	1	00-50-56-A6-45-73	1	Dynamic	<input type="checkbox"/>
16	1	00-50-56-A6-5D-F8	1	Dynamic	<input type="checkbox"/>
17	1	00-C0-9F-30-1C-DB	1	Dynamic	<input type="checkbox"/>

Find Select all Clean all

Done Trusted sites | Protected Mode: Off 100%

DGS-1210-24 - Microsoft Internet Explorer provided by D-Link Australia

http://10.90.90.90/

D-Link Building Networks for People

Smart

admin - 10.90.90.0

Save Tools Smart Wizard Online Help

DGS-1210-24

- System
- Configuration
 - QoS
 - Storm Control
 - Bandwidth Control
 - 802.1p/DSCP Priority Settings
 - Security
 - Trusted Host
 - Safeguard Engine
 - Port Security
 - 802.1X
 - 802.1X Settings
 - MAC Address Table
 - Static MAC
 - Dynamic Forwarding Table
 - Monitoring
 - Statistics
 - Cable Diagnostics
 - System Log
 - ACL
 - ACL Configuration Wizard
 - Access Profile List
 - ACL Filter

Statistics

Refresh All Clear All Counters

Port	TxOK	RxOK	TxError	RxError
1	3933	3975	0	0
2	0	0	0	0
3	0	0	0	0
4	0	0	0	0
5	0	0	0	0
6	0	0	0	0
7	0	0	0	0
8	0	0	0	0
9	0	0	0	0
10	0	0	0	0
11	0	0	0	0
12	0	0	0	0
13	0	0	0	0
14	0	0	0	0
15	0	0	0	0
16	0	0	0	0
17	0	0	0	0
18	0	0	0	0
19	0	0	0	0
20	0	0	0	0
21	0	0	0	0
22	0	0	0	0
23	0	0	0	0
24	0	0	0	0

Done Trusted sites | Protected Mode: Off 100%

DGS-1210-24 - Microsoft Internet Explorer provided by D-Link Australia

http://10.90.90.90/

D-Link Building Networks for People

Smart

admin - 10.90.90.0

Save Tools Smart Wizard Online Help

DGS-1210-24

- System
- Configuration
 - QoS
 - Storm Control
 - Bandwidth Control
 - 802.1p/DSCP Priority Settings
 - Security
 - Trusted Host
 - Safeguard Engine
 - Port Security
 - 802.1X
 - 802.1X Settings
 - MAC Address Table
 - Static MAC
 - Dynamic Forwarding Table
 - Monitoring
 - Statistics
 - Port Statistics**
 - Cable Diagnostics
 - System Log
 - ACL
 - ACL Configuration Wizard
 - Access Profile List
 - ACL Fuzzer

Port Statistics

Previous Page Refresh Clear Counter

TX		RX	
OutOctets	2172829	InOctets	507240
OutUcastPkts	4024	InUcastPkts	3145
OutNUcastPkts	8	InNUcastPkts	910
OutErrors	0	InDiscards	0
LateCollisions	0	INErrors	0
ExcessiveCollisions	0	FCSErrors	0
InternalMacTransmitErrors	0	FrameTooLongs	0
		InternalMacReceiveErrors	0

Done Trusted sites | Protected Mode: Off 100%

DGS-1210-24 - Microsoft Internet Explorer provided by D-Link Australia

http://10.90.90.90/

D-Link Building Networks for People

Smart

admin - 10.90.90.0

Save Tools Smart Wizard Online Help

DGS-1210-24

- System
- Configuration
 - QoS
 - Storm Control
 - Bandwidth Control
 - 802.1p/DSCP Priority Settings
 - Security
 - Trusted Host
 - Safeguard Engine
 - Port Security
 - 802.1X
 - 802.1X Settings
 - MAC Address Table
 - Static MAC
 - Dynamic Forwarding Table
 - Monitoring
 - Statistics
 - Cable Diagnostics**
 - System Log
 - ACL
 - ACL Configuration Wizard
 - Access Profile List
 - ACL Fuzzer

Cable Diagnostics

Port: 01 Test Now

Port	Test Result	Cable Fault Distance (meters)	Cable Length (meters) [in range]

The cable diagnostics feature is designed primarily for administrators or customer service representatives to verify and test copper cables; it can rapidly determine the quality of the cables and the types of error.

Note:

- Before enabling Cable Diagnostics function, please be sure to disable Power Saving via the Power Saving configuration of Web GUI.
- If cable length is displayed as "N/A" it means the cable length is "Not Available". This is due to the port being unable to obtain cable length/either because its link speed is 10M or 100M, or the cables used are broken and/or bad in quality.
- The deviation of "Cable Fault Distance" is +/-2 meters, therefore No cable may be displayed under Test Result, when the cable used is less than 2 m in length.
- It also measures cable fault and identifies the fault in length according to the distance from this switch.

Done Trusted sites | Protected Mode: Off 100%

DGS-1210-24 - Microsoft Internet Explorer provided by D-Link Australia

http://10.90.90.90/

D-Link Building Networks for People

Smart

admin - 10.90.90.0

Save Tools Smart Wizard Online Help

DGS-1210-24

- System
- Configuration
 - QoS
 - Storm Control
 - Bandwidth Control
 - 802.1p/DSCP Priority Settings
 - Security
 - Trusted Host
 - Safeguard Engine
 - Port Security
 - 802.1X
 - 802.1X Settings
 - MAC Address Table
 - Static MAC
 - Dynamic Forwarding Table
 - Monitoring
 - Statistics
 - Cable Diagnostics
 - System Log**
 - ACL
 - ACL Configuration Wizard
 - Access Profile List
 - ACL Fuzzer

Switch History Log

Refresh Clear

(Maximum Entries : 500)

ID	Time	Log Description	Severity
1	Jan 1 00:04:45 2009	Successful login through Web (IP: 10.90.90.0)	info
2	Jan 1 00:00:08 2009	System started up	critical
3	Jan 1 00:00:03 2009	Port 1 link up, 1Gbps FULL duplex	info

Done Trusted sites | Protected Mode: Off 100%

DGS-1210-24 - Microsoft Internet Explorer provided by D-Link Australia

http://10.90.90.90/

D-Link Building Networks for People

Smart

admin - 10.90.90.0

Save Tools Smart Wizard Online Help

DGS-1210-24

- System
- Configuration
 - QoS
 - Storm Control
 - Bandwidth Control
 - 802.1p/DSCP Priority Settings
 - Security
 - Trusted Host
 - Safeguard Engine
 - Port Security
 - 802.1X
 - 802.1X Settings
 - MAC Address Table
 - Static MAC
 - Dynamic Forwarding Table
 - Monitoring
 - Statistics
 - Cable Diagnostics
 - System Log
 - ACL
 - ACL Configuration Wizard
 - Access Profile List
 - ACL Finder

Switch History Log

Refresh Clear

(Maximum Entries : 500)

ID	Time	Log Description	Severity
1	Jan 1 00:04:45 2009	Successful login through Web (IP: 10.90.90.8)	info
2	Jan 1 00:00:08 2009	System started up	critical
3	Jan 1 00:00:03 2009	Port 1 link up, 1Gbps FULL duplex	info

Done Trusted sites | Protected Mode: Off 100%

DGS-1210-24 - Microsoft Internet Explorer provided by D-Link Australia

http://10.90.90.90/

D-Link Building Networks for People

Smart

admin - 10.90.90.0

Save Tools Smart Wizard Online Help

DGS-1210-24

- System
- Configuration
 - QoS
 - Storm Control
 - Bandwidth Control
 - 802.1p/DSCP Priority Settings
 - Security
 - Trusted Host
 - Safeguard Engine
 - Port Security
 - 802.1X
 - 802.1X Settings
 - MAC Address Table
 - Static MAC
 - Dynamic Forwarding Table
 - Monitoring
 - Statistics
 - Cable Diagnostics
 - System Log
 - ACL
 - ACL Configuration Wizard
 - Access Profile List
 - ACL Finder

Access Profile List

Add ACL Profile Delete All

Profile ID	Owner Type	Profile Summary	Show Details	Show Rules	Delete
51	Voice VLAN	Source MAC			

CurrentMax. Profile: 0/50, CurrentMax. Rule: 0/240

Done Trusted sites | Protected Mode: Off 100%

DGS-1210-24 - Microsoft Internet Explorer provided by D-Link Australia

http://10.90.90.90/

D-Link Building Networks for People

Smart

admin - 10.90.90.0

Save Tools Smart Wizard Online Help

DGS-1210-24

- System
- Configuration
 - QoS
 - Storm Control
 - Bandwidth Control
 - 802.1p/DSCP Priority Settings
 - Security
 - Trusted Host
 - Safeguard Engine
 - Port Security
 - 802.1X
 - 802.1X Settings
 - MAC Address Table
 - Static MAC
 - Dynamic Forwarding Table
 - Monitoring
 - Statistics
 - Cable Diagnostics
 - System Log
 - ACL
 - ACL Configuration Wizard
 - Access Profile List
 - ACL Finder

ACL Finder

ACL rule finder helps you identify any rule has been assigned to a specific port

Profile ID: Any Ports:

Find

Profile ID	Access ID	Profile Type	Summary	Action
------------	-----------	--------------	---------	--------

Done Trusted sites | Protected Mode: Off 100%

