



# D-Link IShare for Cable/xDSL Modem

Connect Internet and your Office/Home network

## Features

- Allow 32 users to access Internet concurrently.
- Support Internet applications such as Web browser, ICQ, FTP, Telnet, E-Mail, PING, etc.
- DHCP server allocates up to 128 client IP addresses.
- DHCP client to request a global IP address from ISP
- 10/100Mbps dual speed auto-detecting for flexible network connectivity.
- Static route to Intranet servers
- Flash memory for firmware upgrade
- Support most operating systems such as Windows 95/98/NT, Unix, and Mac
- Natural firewall keeps hackers out

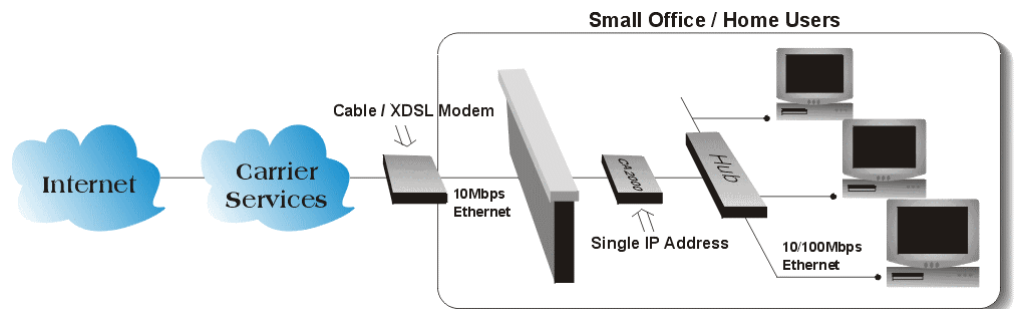
## DI-701 *Internet IP sharing device series*

**Sharing for Hi-speed Surfing** no more worries about shortage of IP address resources. By sharing just one DI-701, single IP address, and one Cable/xDSL Modem, dozens of network users can go surfing on the Internet concurrently.

**Plug & Play** DI-701 implements both DHCP client and server to request global network configuration from ISP server and distributes local network configuration to PCs. Zero configuration effort is needed.

**Network Expansion & Traffic Isolation** for a larger network, adding a DI-701 can expand the nodes on the network without allocating extra IP addresses. Another benefit is to reduce network traffic. Using the DI-701 to group network PCs, then only the outgoing IP traffic will pass through the device. Traffic, even the broadcast frames, within a group, will not flow out to affect the bandwidth of the PCs outside the group.

## How does it work



## Specifications

### Protocols

IP, NAT, ARP, ICMP, DHCP

### Management

Direct serial cable connection through Console port and a GUI program for Windows 95/98/NT through network.

### Local

RJ-45 connector for 10/100 Base-T Ethernet to an Ethernet Switching or HUB

### Global

RJ-45 connector for 10 Base-T Ethernet to an external Cable/DSL Modem.

### Console

DB-9 female connector for configuration and firmware upgrade

### LED Indicators

Power, Local Link, Local Speed 10/100, Local Full/Half duplex, Global Link, Error

### Electronic Specifications

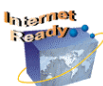
Input Power 5V DC @2.0A

### Physical Dimension

158"W x 104"D x 26"H

### Agency and Regulatory

FCC part 15 Class B



# D-Link

All trademarks and brand names are the property of their respective proprietors.  
Specifications are subject to change without prior notification.