

## Highlights

### Robust Design

High EMC endurance, fanless design, and a wide operating temperature range combined with IP40 housing to withstand harsh operating environments.

### Industrial Deployment

Compact, plug-and-play form factor design that supports DIN rail mounting to allow for flexible and swift deployment.



## DIS-100E-05

# 5-Port Industrial Switch with 5 10/100BASE-T ports

## Key Features:

### Robust and High-Redundancy Design

- Fanless, passive cooling design
- Industrial grade operating temperature (-40~75°C)
- High EMS endurance
- Durable IP40-rated housing
- Dual power input for redundant power supplies
- Built-in 6 KV surge protection on copper ports
- Plug-and-play installation

### Advanced Features

- 1.5K jumbo frames
- IEEE 802.3az Energy Efficient Ethernet
- Power saving by link status

The DIS-100E-05 Fast Ethernet Industrial Unmanaged Switch features a rugged, high-redundancy design, making it ideal for industrial and outdoor applications. Built to withstand harsh environments, it also offers plug-and-play functionality for quick and effortless deployment.

## Durable and Reliable Design

The DIS-100E-05 Switch is built to perform in tough industrial environments. Its rugged, IP40-rated metal housing provides reliable protection against dust and physical stress, while advanced EMC shielding ensures uninterrupted operation in areas with heavy electrical noise and interference.

## Silent Operation, Extreme Durability

The fanless design enhances the DIS-100E-05 Industrial Switch's lifespan while enabling reliable operation in extreme temperatures ranging from -40 °C to 75 °C. With DIN rail mounting capability, the DIS-100E-05 can fit seamlessly into your industrial equipment infrastructure.

## High Redundancy and Reliability

The DIS-100E-05 Switch supports ERPS quick failover recovery for ring topologies that ensures minimal downtime and avoids any loss of data in mission-critical deployment settings. Meanwhile, the dual power input allows for a redundant power supply to make sure the device continues to operate in the event of a primary power supply failure.

## Green Ethernet Technology

The DIS-100E-05 features Green Technology; IEEE 802.3az Energy-Efficient Ethernet (EEE). Energy-Efficient Ethernet reduces the power consumption of the Switch when network utilisation is low, effectively lowering the cost of ownership during periods of inactivity.



### Unmanaged Plug-and-Play

Industrial-grade networking with zero configuration required



### Fast Ethernet Connectivity

Designed with 5 x 10/100BaseT(X) Fast Ethernet ports to suit your network layout



### Officially Certified

Certifications for vibration, shock, free-fall and electromagnetic compatibility to maximise network uptime in a variety of deployment environments



### Withstands Extreme Temperatures

Operates effortlessly in a range of industrial and harsh environments in temperatures from -40°C to +75°C, and can cold start from -40°C



### Strong Build

Engineered with a rugged housing to keep your network protected and performing reliably in harsh conditions



### Fast Deployment

For instant installation it features a snap-to-DIN-rail clip, and also supports wall mounting



### Fanless Design

With no moving parts inside to reduce downtime, the rugged housing has been optimised for the transfer of heat

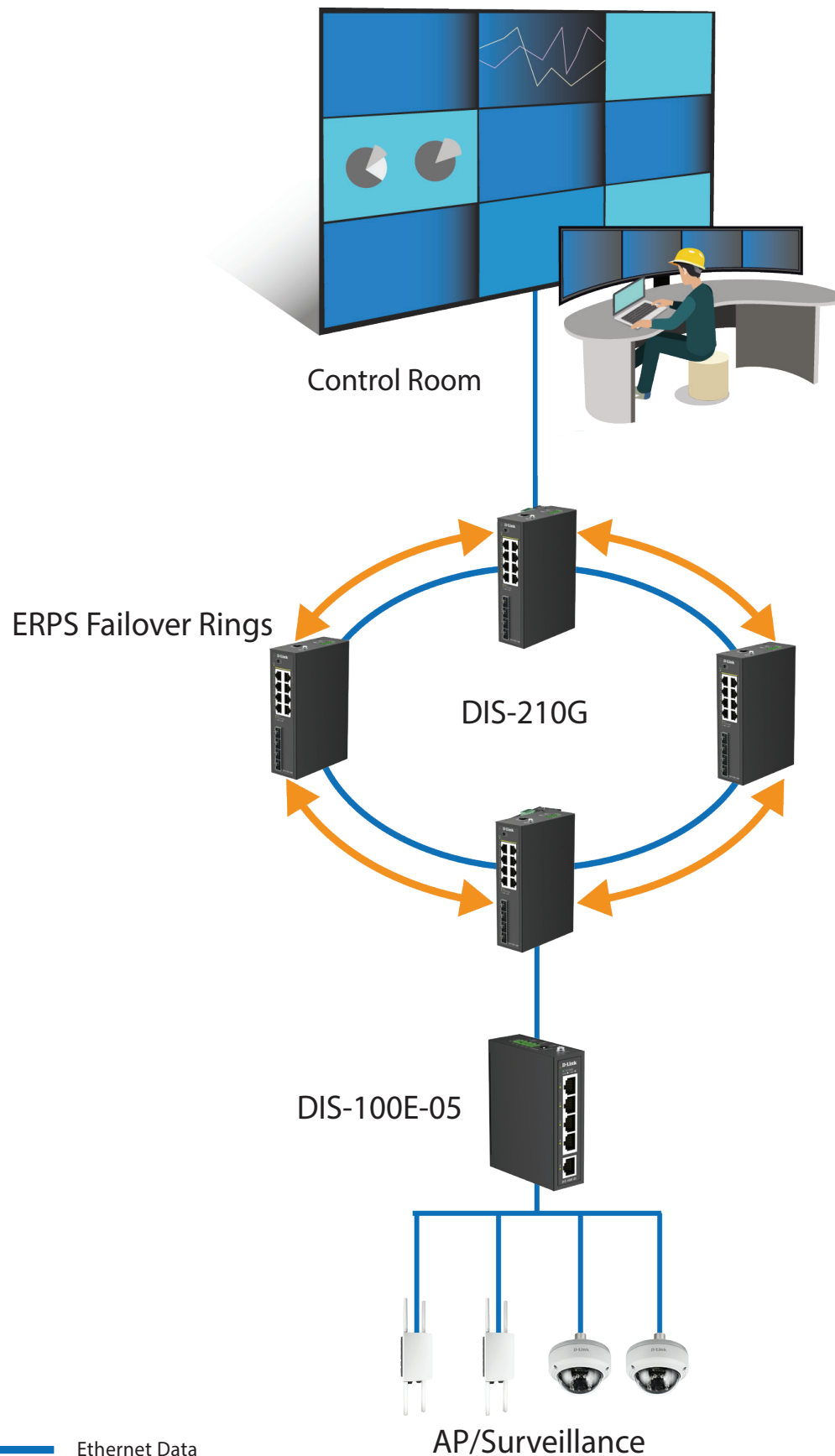


### Discreet Size

Small but mighty. To make the most of cabinet space, it measures: 100 x 76.5 x 30 mm

## 5-Port Industrial Switch with 5 10/100BASE-T ports

## Deployment Scenario



## 5-Port Industrial Switch with 5 10/100BASE-T ports

Technical Specifications	
General	
HW Version	• A1
Device Interfaces	• 5 x 10/100Mbps Ethernet ports
Port Functions	• IEEE 802.3 for Ethernet • IEEE 802.3u for Fast Ethernet • IEEE 802.3z for Gigabit fiber • IEEE 802.3az Energy-Efficient Ethernet (EEE)
Media Interface Exchange	• Auto MDI/MDIX adjustment for all twisted-pair ports
Performance	
Switching Capacity	• 1Gbps
Transmission Method	• Store-and-forward
MAC Address Table	• 1K
Maximum 64 Byte Packet Forwarding Rate	• 0.74Mpps
Packet Buffer Memory	• 0.448MB
LEDs	
Power (per device)	✓
Link / Active / Speed (per RJ45 port)	✓
Physical	
Power Input	12 to 55 VDC terminal block dual input
Max Power Consumption	Maximum: 1.45W
Standby Power Consumption	Maximum: 1.03W
Heat Dissipation	4.95 BTU/h
MTBF	> 200,000 hours
Operating Temperature	-40 to 75°C
Storage Temperature	-40 to 85°C
Operating Humidity	5% to 95% relative humidity
Storage Humidity	5% to 95% relative humidity
Material	IP40-rated metal casing
Installation	DIN rail
Dimensions	100 x 76.5 x 30mm
Weight	0.27kg
Other	
Certifications	CE, FCC, RCM, RoHS
Ordering Information	
DIS-100E-05	5-Port Industrial Switch with 5 10/100BASE-T ports
Barcode / UPC	790069479472