

Product Highlights

Robust Design

High EMC endurance, fanless design, and a wide operating temperature range combined with IP40 housing to withstand harsh operating environments.

Industrial Deployment

Compact, plug-and-play form factor design that supports DIN rail mounting to allow for flexible and swift deployment.



DIS-100E-05

Fast Ethernet Industrial Unmanaged Switch

Key Features

Robust and High-Redundancy Design

- Fanless, passive cooling design
- Industrial grade operating temperature (-40~75°C)
- High EMS endurance
- Durable IP40-rated housing
- Dual power input for redundant power supplies
- Built-in 6 KV surge protection on copper ports
- Plug-and-play installation

Advanced Features

- 1.5K jumbo frames
- IEEE 802.3az Energy Efficient Ethernet
- Power saving by link status

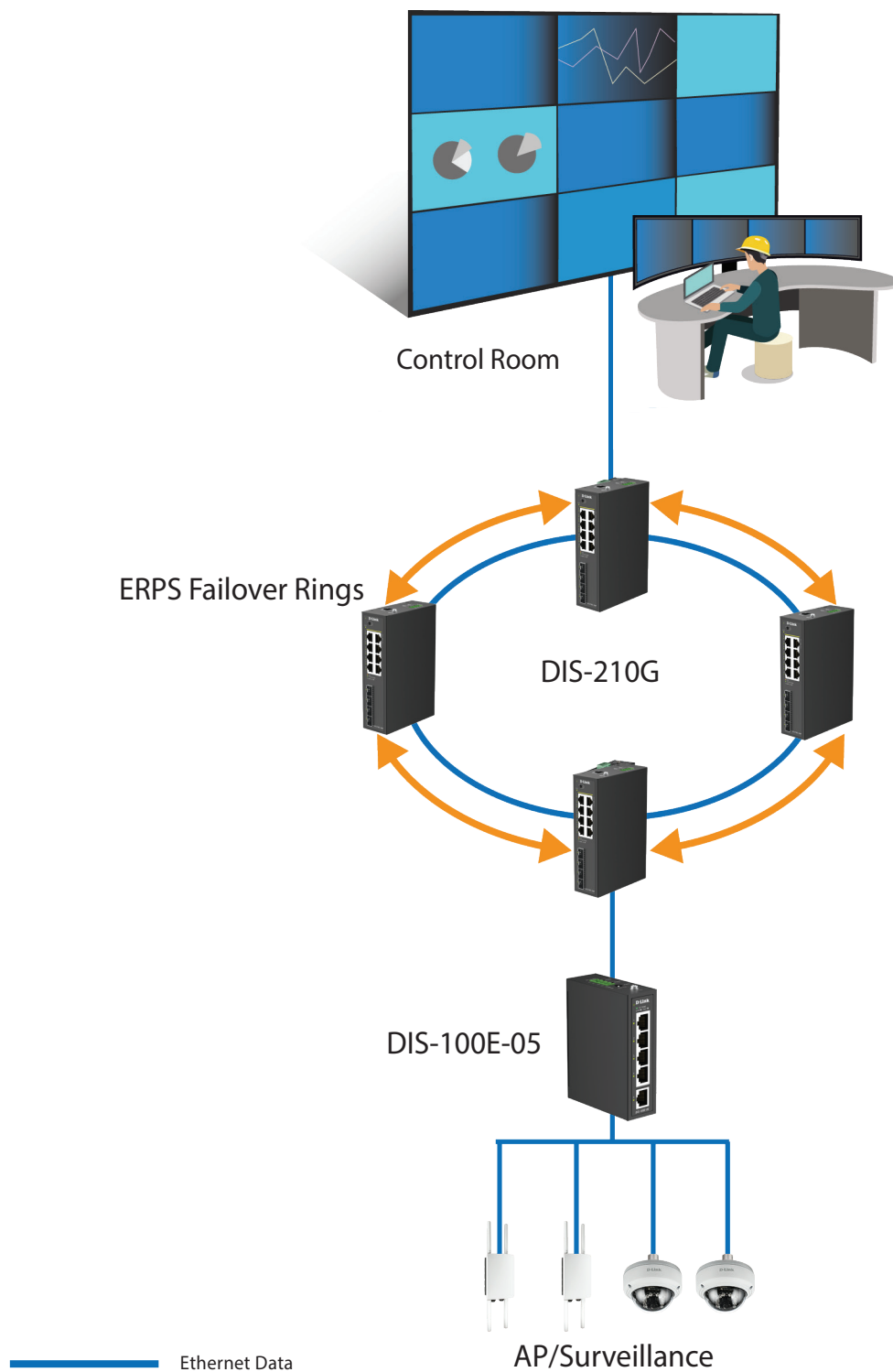
The DIS-100E-05 Fast Ethernet Industrial Unmanaged Switch features a robust design, making it ideal for deployment in industrial and outdoor cabinet surveillance settings and capable of withstanding the harshest environments. In addition, the DIS-100E-05 is plug-and-play, allowing for effortless and swift deployment.

Durable, Reliable, and Efficient

The DIS-100E-05 switch is housed in a highly resistant IP40-rated metal casing to protect the switch from harsh environmental conditions. High electromagnetic susceptibility (EMS) protects it from undesirable effects when operating in environments with strong electromagnetic interference. Meanwhile, the fanless design extends the life of the DIS-100E-05 while also enabling it to operate in a wide temperature range from -40 °C up to 75 °C. With DIN rail mounting capability, the DIS-100E-05 can fit seamlessly into your industrial equipment infrastructure. In addition, the DIS-100E-05 supports dual power input, which allows for a redundant power supply configuration to make sure the switch continues to operate in the event of a primary power supply failure.

Green Ethernet Technology

The DIS-100E-05 features green technology; IEEE 802.3az Energy-Efficient Ethernet (EEE). Energy-Efficient Ethernet reduces the power consumption of the switch when network utilization is low, effectively lowering the cost of ownership during periods of inactivity.



Technical Specifications

Model Number	DIS-100E-05	
Hardware Version	A1	
Interfaces	5 x 10/100 Mbps Ethernet ports	
Port Functions	<ul style="list-style-type: none">• IEEE 802.3 for Ethernet• IEEE 802.3u for Fast Ethernet	<ul style="list-style-type: none">• IEEE 802.3z for Gigabit fiber• IEEE 802.3az Energy-Efficient Ethernet (EEE)
Media Interface Exchange	Auto MDI/MDIX adjustment for all twisted-pair ports	
Performance		
Switching Capacity	1 Gbps	
Transmission Method	Store-and-forward	
MAC Address Table	1K	
Maximum 64 Byte Packet Forwarding Rate	0.74 Mpps	
Packet Buffer Memory	0.448 MB	
LED		
Power (per device)	√	
Link/Active/Speed (per RJ-45 port)	√	
Physical		
Power Input	12 to 55 VDC terminal block dual input	
Maximum Power Consumption	Maximum: 1.45 W	
Standby Power Consumption	Maximum: 1.03 W	
Heat Dissipation	4.95 BTU/hr	
MTBF	> 200,000 hours	
Operating Temperature	-40 to 75°C (-40 to 167°F)	
Storage Temperature	-40 to 85°C (-40 to 185°C)	
Operating Humidity	5% to 95% relative humidity	
Storage Humidity	5% to 95% relative humidity	
Material	IP40-rated metal casing	
Installation	DIN rail	
Dimensions (L x W x H)	100 x 76.5 x 30 mm (3.94 x 3.01 x 1.18 in)	
Weight	0.27 kg (0.60 lbs)	
Certifications		
Safety	cUL, CB, CE, BSMI	
EMI	CE Class A, VCCI Class A, FCC Class A, IC, BSMI, RCM	
Order Information		
DIS-100E-05	5 Ports 10/100Mbps Industrial Unmanaged Switch, DIN	