

DNS-726-4

f/w 1.0, CD 1.0

D-Link *DNS-726-4 2-BAY NETWORK VIDEO RECORDER*

- NVR Search Utility
- Application
- View QIG
- View Manual
- Adobe Reader
- Support

← Exit

D-Link NVR Search Utility

Network Video Recorder

Name	IP	Netmask	Gateway
dlink-6CE076	192.168.0.32	255.255.25...	192.168.0.1

Refresh
Configuration

LAN

Receive DHCP:

IP:

Netmask:

Gateway:

Apply

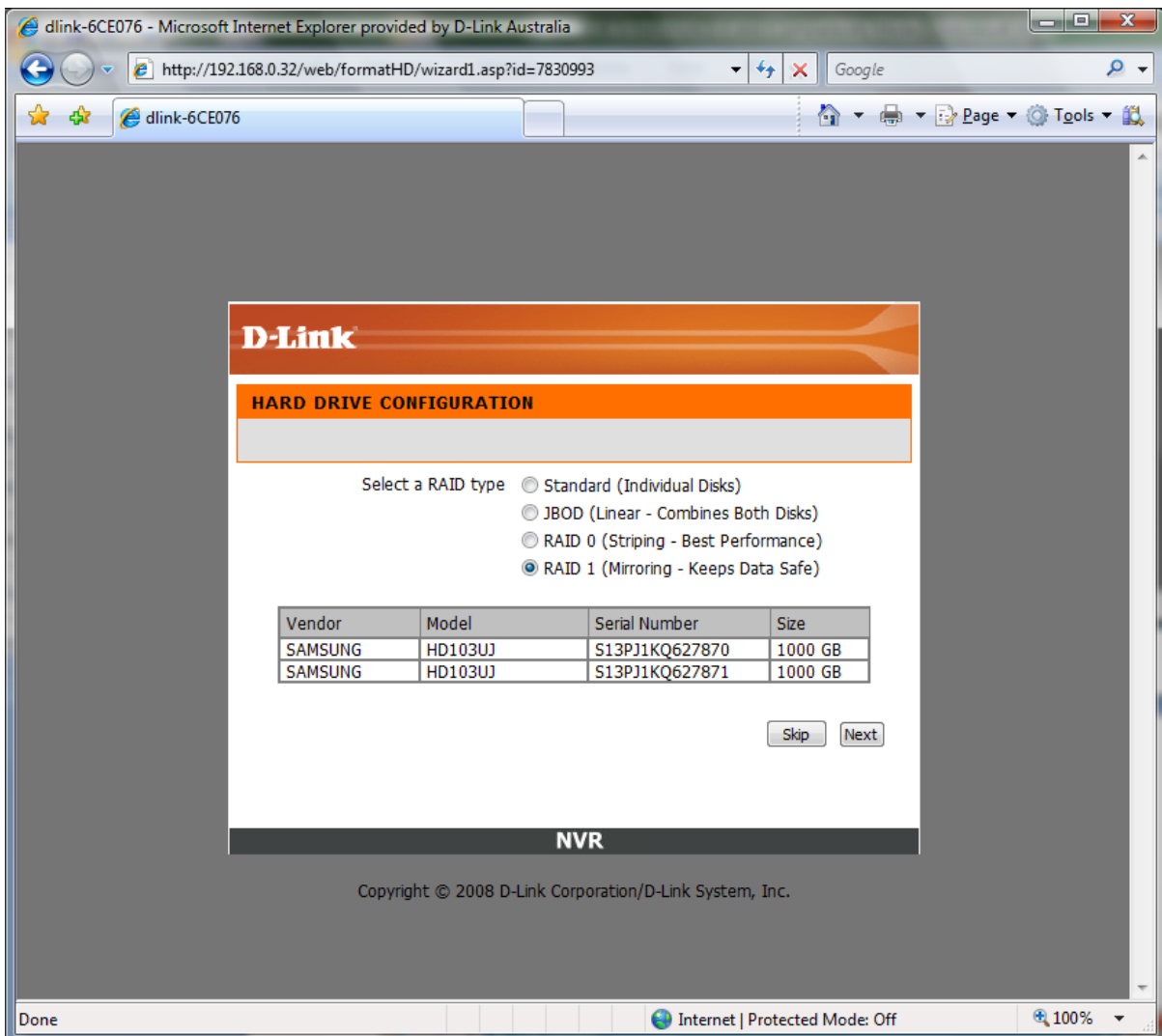
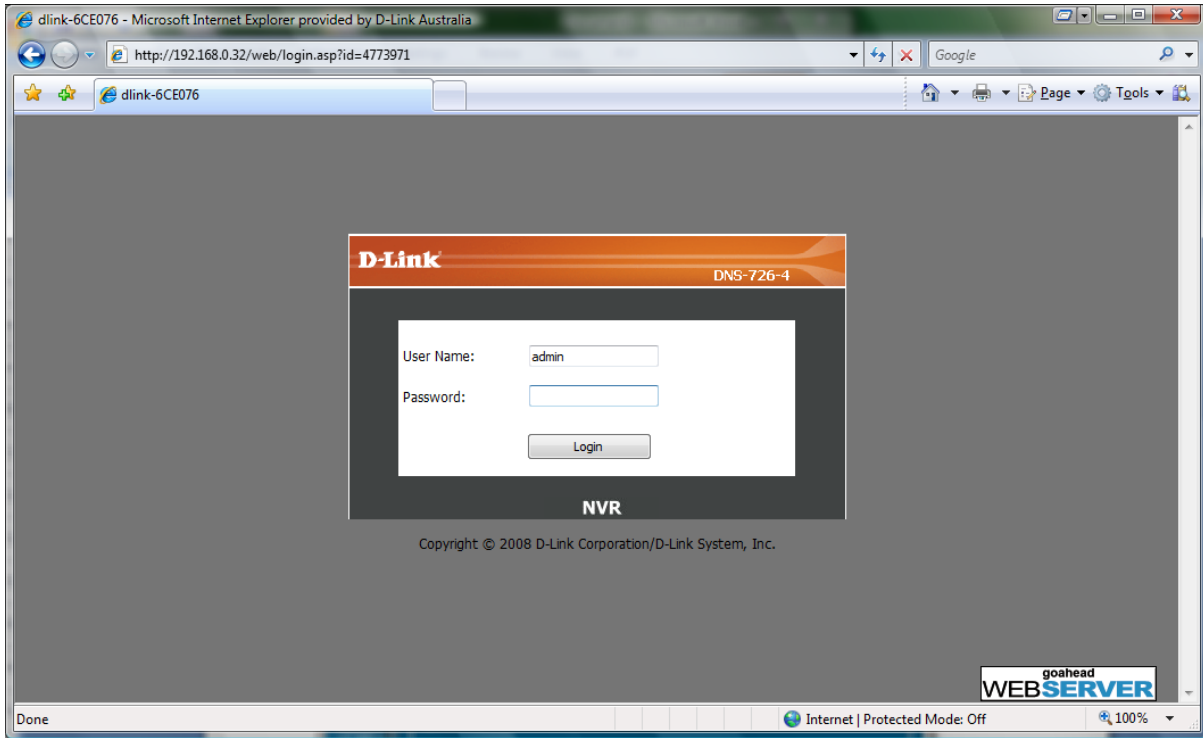
System Info

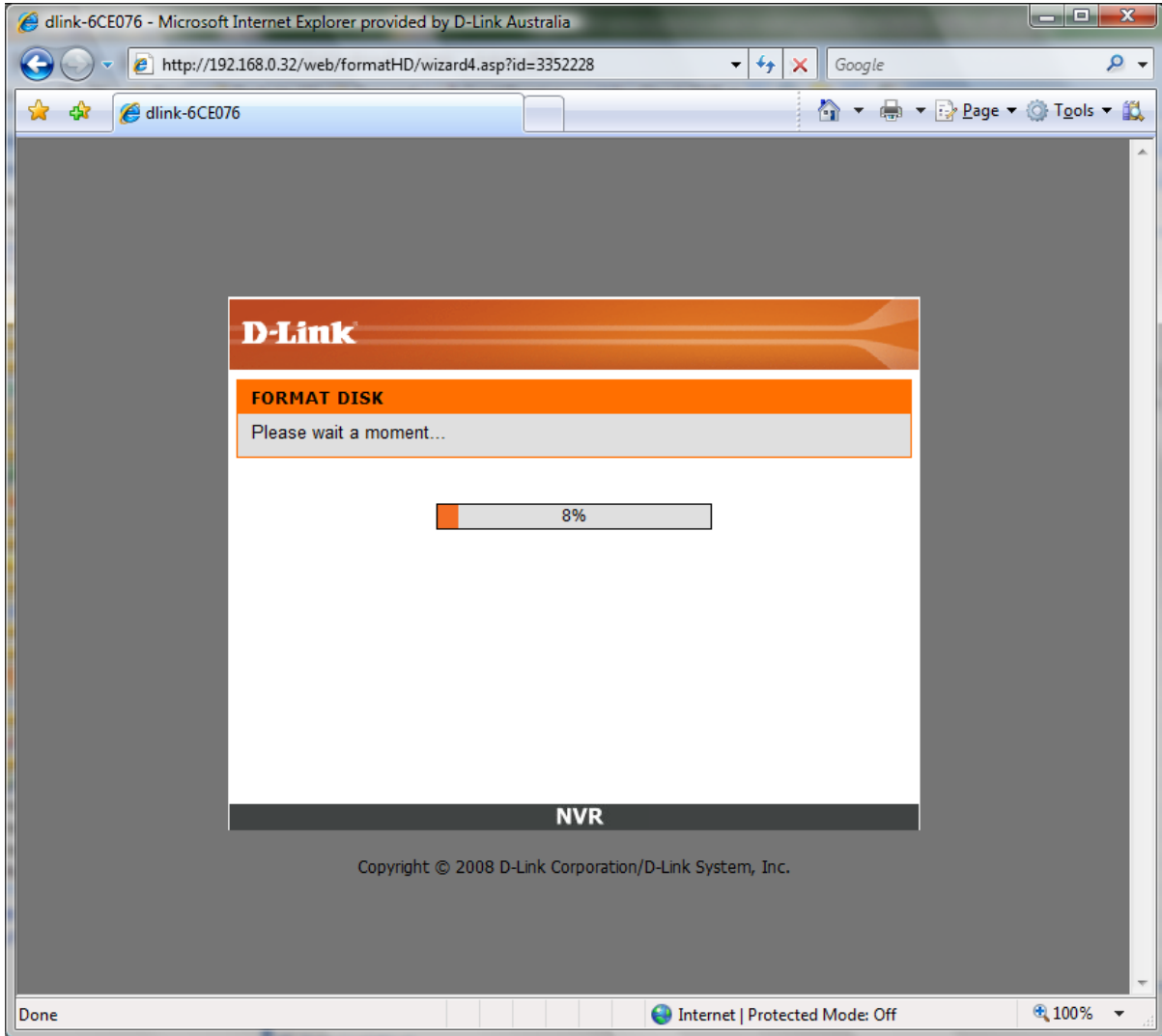
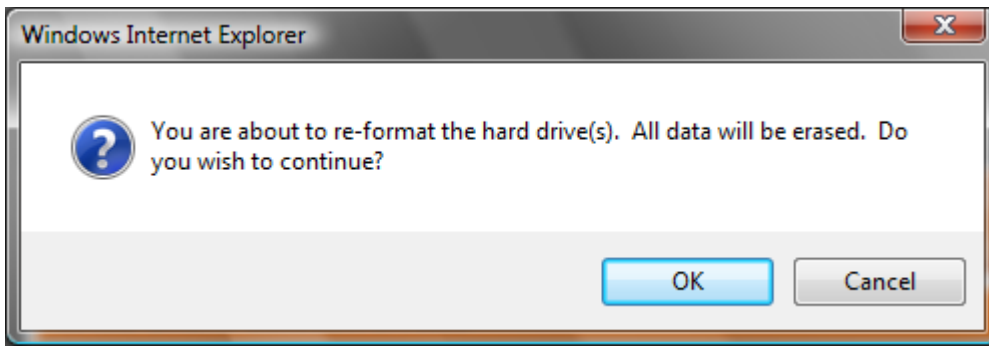
Model: DNS-726-4

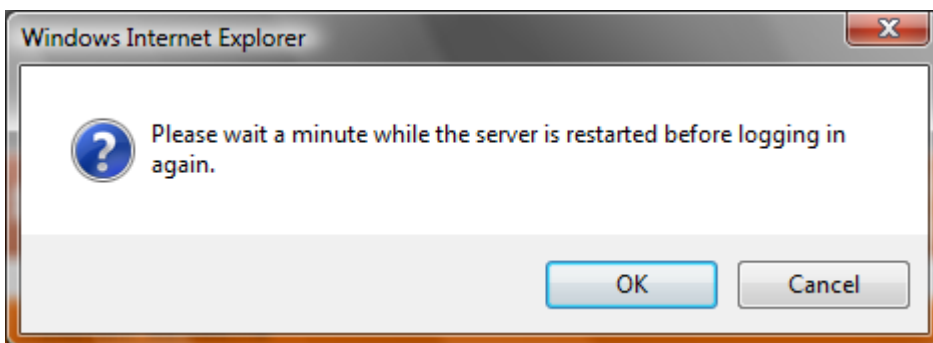
MAC: 00:22:B0:6C:E0:76

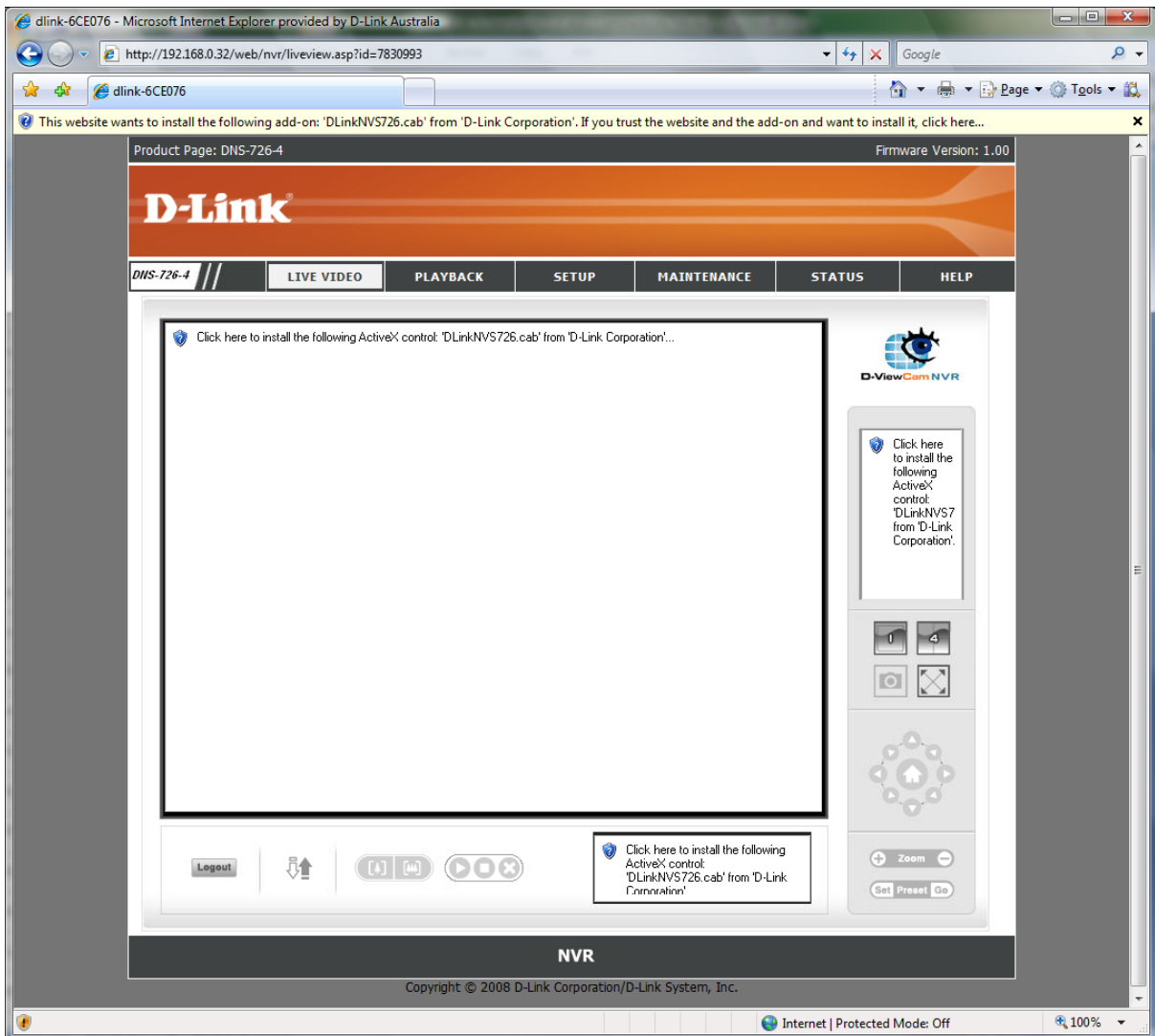
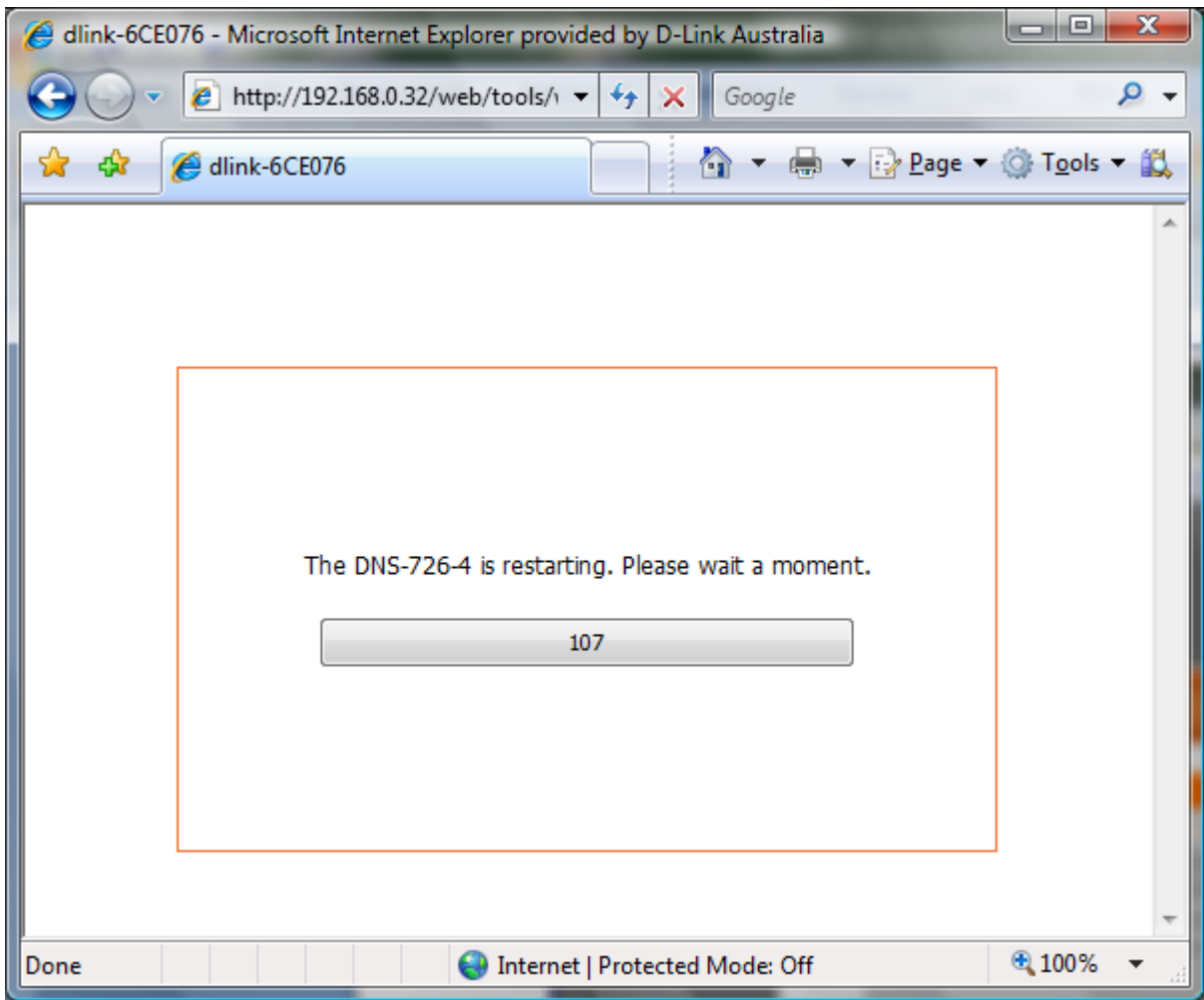
HW Version: A1

FW Version: 1.00, 23 Oct. 2008











dlink-6CE076 - Microsoft Internet Explorer provided by D-Link Australia
http://192.168.0.32/web/tools/network.asp?id=7172970

Product Page: DNS-726-4 Firmware Version: 1.00

D-Link

DNS-726-4 // LIVE VIDEO PLAYBACK SETUP MAINTENANCE STATUS HELP

Wizard
Network Setup
Camera Search
Camera Setup
Audio and Video
Live & Playback Setup
Recording Schedule
Event Setup
E-Mail Setup
Dynamic DNS
Time and Date Setup
Logout

NETWORK SETUP

Select your connection type and enter the IP information if necessary.

LAN SETTINGS

DHCP Client
 Static IP

IP Address	<input type="text" value="192.168.0.32"/>
Subnet Mask	<input type="text" value="255.255.255.0"/>
Gateway IP Address	<input type="text" value="192.168.0.253"/>
DNS1	<input type="text" value="192.168.0.243"/>
DNS2	<input type="text" value="192.168.0.249"/>

PPPoE SETTINGS

PPPoE Enable Disable

User Name (e.g. name@isp.com)

Password

Connection Status **Not Available.**

Helpful Hints..

Points to remember while setting up a network connection:

- A static IP address is recommended for a network connection for easy management. The PPPoE connection is also useful for network setup.
- Any changes in the **Network Settings** will restart the system.

Done Internet | Protected Mode: Off 100%

Product Page: DNS-726-4 Firmware Version: 1.00

D-Link

DNS-726-4 // LIVE VIDEO PLAYBACK SETUP MAINTENANCE STATUS HELP

Wizard
Network Setup
Camera Search
Camera Setup
Audio and Video
Live & Playback Setup
Recording Schedule
Event Setup
E-Mail Setup
Dynamic DNS
Time and Date Setup
Logout

CAMERA SEARCH

Click **Search** to list out all the UPnP cameras.

CAMERA LIST

Index	Camera Name	Address	Port	Vendor	Model
1			80	-- none --	-- none --
2			80	-- none --	-- none --
3			80	-- none --	-- none --
4			80	-- none --	-- none --

UPNP SEARCH

Search Complete

IP Addr	Vendor	Model	MAC
192.168.0.120	D-Link	DCS-3410	00-1E-58-9F-31-DA +
192.168.0.121	D-Link	DCS-3415	00-1C-F0-78-F6-79 +

Helpful Hints..

To add a camera:
1. Click + to add a camera into the list. The camera setting page appears.
2. Select the camera you want to add.
3. Enter the camera name, user name and password details. Please input user name ("admin" is the user name for every D-link's cameras) and password in order to access and configure the cameras using the NVR's UI.

Notes

- Some cameras will limit the login authority to the administrator only.
- To add cameras without the UPnP function, please go to **Camera Setup** menu and enter the IP address manually.
- You may not be able to see all the cameras on your first search. It takes time for the devices to respond to UPnP request. Please click search again.

Internet | Protected Mode: Off 100%

Product Page: DNS-726-4 Firmware Version: 1.00

D-Link

DNS-726-4 // LIVE VIDEO PLAYBACK SETUP MAINTENANCE STATUS HELP

Wizard
Network Setup
Camera Search
Camera Setup
Audio and Video
Live & Playback Setup
Recording Schedule
Event Setup
E-Mail Setup
Dynamic DNS
Time and Date Setup
Logout

CAMERA SETTINGS :

Add IP Camera

Camera Name:

IP Address: Port:

User Name: Password:

Add to channel: Protocol:

Vendor: Model:

Current Camera Settings

Index	Camera Name	IP Addr	Vendor	Model
1			-- none --	-- none --
2			-- none --	-- none --
3			-- none --	-- none --
4			-- none --	-- none --

Copyright © 2008 D-Link Corporation/D-Link System, Inc.

Internet | Protected Mode: Off 100%

Product Page: DNS-726-4 Firmware Version: 1.00

D-Link

DNS-726-4 //
LIVE VIDEO
PLAYBACK
SETUP
MAINTENANCE
STATUS
HELP

- Wizard
- Network Setup
- Camera Search
- Camera Setup
- Audio and Video
- Live & Playback Setup
- Recording Schedule
- Event Setup
- E-Mail Setup
- Dynamic DNS
- Time and Date Setup
- Logout

CAMERA SEARCH

Click **Search** to list out all the UPnP cameras.

CAMERA LIST

Index	Camera Name	Address	Port	Vendor	Model
1	D-Link_DCS-3410	192.168.0.120	80	D-Link	DCS-3410
2	D-Link_DCS-3415	192.168.0.121	80	D-Link	DCS-3415
3			80	-- none --	-- none --
4			80	-- none --	-- none --

UPNP SEARCH

Search Search Complete

IP Addr	Vendor	Model	MAC	
192.168.0.120	D-Link	DCS-3410	00-1E-58-9F-31-DA	+
192.168.0.121	D-Link	DCS-3415	00-1C-F0-78-F6-79	+

Helpful Hints..

To add a camera:

1. Click + to add a camera into the list. The camera setting page appears.
2. Select the camera you want to add.
3. Enter the camera name, user name and password details. Please input user name ("admin" is the user name for every D-link's cameras) and password in order to access and configure the cameras using the NVR's UI.

Notes

- Some cameras will limit the login authority to the administrator only.
- To add cameras without the UPnP function, please go to **Camera Setup** menu and enter the IP address manually.
- You may not be able to see all the cameras on your first search. It takes time for the devices to respond to UPnP request. Please click search again.

Internet | Protected Mode: Off
100%

dlink-6CE076 - Microsoft Internet Explorer provided by D-Link Australia
 http://192.168.0.32/web/nvr/ipcam_settings.asp?id=3352228

Product Page: DNS-726-4 Firmware Version: 1.00

D-Link

DNS-726-4 // LIVE VIDEO PLAYBACK SETUP MAINTENANCE STATUS HELP

Wizard
 Network Setup
 Camera Search
 Camera Setup
 Audio and Video
 Live & Playback Setup
 Recording Schedule
 Event Setup
 E-Mail Setup
 Dynamic DNS
 Time and Date Setup
 Logout

CAMERA SETUP

To manually add the camera, enter the IP address of the camera.

Save Settings Don't Save Settings

CAMERA SETUP

Camera Index: Camera 1
 Camera Name: D-Link_DCS-3410
 Address: 192.168.0.120 Port: 80
 Administrator Name: admin Password:
 Camera Channel: 1 Protocol: TCP UDP HTTP
 Vendor: D-Link Model: DCS-3410

Auto Detection Clear

CAMERA LIST

Index	Camera Name	Address	Port	Vendor
1	D-Link_DCS-3410	192.168.0.120	80	D-Link
2	D-Link_DCS-3415	192.168.0.121	80	D-Link
3			80	-- none --
4			80	-- none --

Model dropdown list:
 DCS-2102
 DCS-2120(TW)
 DCS-2120
 DCS-2121
 DCS-3110
 DCS-3220
 DCS-3220G
 DCS-3410
 DCS-3415
 DCS-3420
 DCS-5220(TW)
 DCS-5220
 DCS-5300
 DCS-5300G
 DCS-5610
 DCS-6110
 DCS-6111
 DCS-6620
 DCS-6620G
 DCS-900
 DCS-910
 DCS-920
 DCS-950
 DCS-950G
 DCS-G900

Helpful Hints..
 The following list briefly describes the Camera Setup menu items:
Camera Channel: Select the number of analog cameras supported by one video server from the list.
Vendor: Displays the manufacturer's name.
Auto Detection: Click to automatically detect all the information (such as camera channel, protocol used, vendor, model number) of the camera.
Note: Some cameras will limit the login authority to the administrator only.

Internet | Protected Mode: Off 100%



- Wizard
- Network Setup
- Camera Search
- Camera Setup
- Audio and Video
- Live & Playback Setup
- Recording Schedule
- Event Setup
- E-Mail Setup
- Dynamic DNS
- Time and Date Setup
- Logout

CAMERA SETUP

To manually add the camera, enter the IP address of the camera.

CAMERA SETUP

Camera Index: **Camera 1**

Camera Name: D-Link_DCS-3410

Address: 192.168.0.120 Port:

Administrator Name: admin Password:

Camera Channel: 1 Protocol: UDP HTTP

Vendor: Axis Model:

CAMERA LIST

Index	Camera Name	Address	Port	Vendor
1	D-Link_DCS-3410	192.168.0.120	80	D-Link
2	D-Link_DCS-3415	192.168.0.121	80	D-Link
3			80	-- none
4			80	-- none

- 205
- 206
- 206M
- 206W
- 207
- 207MW
- 207W
- 209FD
- 209FD-R
- 209MFD
- 209MFD-R
- 210
- 210A
- 211
- 211A
- 211M
- 211W
- 212
- 213
- 214
- 215
- 216FD
- 216FD-V
- 216MFD
- 216MFD-V
- 221
- 223M
- 225FD
- 231D
- 232D
- 233D
- 240Q
- 241Q
- 241QA
- 241S
- 241SA
- 242S
- 243SA
- 247S

Helpful Hints..

The following list briefly describes the **Camera Setup** menu items:

Camera Channel: Select the number of analog cameras supported by one video server from the list.

Vendor: Displays the manufacturer's name.

Auto Detection: Click to automatically detect all the information (such as camera channel, protocol used, vendor, model number) of the camera.

Note:
Some cameras will limit the login authority to the administrator only.

dlink-6CE076 - Microsoft Internet Explorer provided by D-Link Australia
 http://192.168.0.32/web/nvr/ipcam_settings.asp?id=3352228

Product Page: DNS-726-4 Firmware Version: 1.00

D-Link

DNS-726-4 // LIVE VIDEO PLAYBACK SETUP MAINTENANCE STATUS HELP

Wizard
 Network Setup
 Camera Search
Camera Setup
 Audio and Video
 Live & Playback Setup
 Recording Schedule
 Event Setup
 E-Mail Setup
 Dynamic DNS
 Time and Date Setup
 Logout

CAMERA SETUP

To manually add the camera, enter the IP address of the camera.

Save Settings Don't Save Settings

CAMERA SETUP

Camera Index **Camera 1**
 Camera Name D-Link_DCS-3410
 Address 192.168.0.120 Port 80
 Administrator Name admin Password
 Camera Channel 1 Protocol TCP UDP HTTP
 Vendor Panasonic Model BB-HCE481

Auto Detection Clear

CAMERA LIST

Index	Camera Name	Address	Port	Vendor
1	D-Link_DCS-3410	192.168.0.120	80	D-Link
2	D-Link_DCS-3415	192.168.0.121	80	D-Link
3			80	-- none
4			80	-- none

BB-HCE481
 BB-HCE481
 BB-HCM311
 BB-HCM331
 BB-HCM371
 BB-HCM381
 BB-HCM511
 BB-HCM515
 BB-HCM581
 BB-HCS301
 BL-C1
 BL-C10
 BL-C111
 BL-C131
 BL-C20
 BL-C30
 KX-HCM110
 KX-HCM280A

Helpful Hints..
 The following list briefly describes the **Camera Setup** menu items:
Camera Channel: Select the number of analog cameras supported by one video server from the list.
Vendor: Displays the manufacturer's name.
Auto Detection: Click to automatically detect all the information (such as camera channel, protocol used, vendor, model number) of the camera.
Note: Some cameras will limit the login authority to the administrator only.

Internet | Protected Mode: Off 100%

dlink-6CE076 - Microsoft Internet Explorer provided by D-Link Australia
 http://192.168.0.32/web/nvr/ipcam_settings.asp?id=3352228

Product Page: DNS-726-4 Firmware Version: 1.00

D-Link

DNS-726-4 // LIVE VIDEO PLAYBACK SETUP MAINTENANCE STATUS HELP

Wizard
 Network Setup
 Camera Search
 Camera Setup
 Audio and Video
 Live & Playback Setup
 Recording Schedule
 Event Setup
 E-Mail Setup
 Dynamic DNS
 Time and Date Setup
 Logout

CAMERA SETUP

To manually add the camera, enter the IP address of the camera.

Save Settings Don't Save Settings

CAMERA SETUP

Camera Index **Camera 1**
 Camera Name D-Link_DCS-3410
 Address 192.168.0.120 Port 80
 Administrator Name admin Password
 Camera Channel 1 Protocol TCP UDP HTTP
 Vendor Sony Model

Auto Detection Clear

CAMERA LIST

Index	Camera Name	Address	Port	Vendor
1	D-Link_DCS-3410	192.168.0.120	80	D-Link
2	D-Link_DCS-3415	192.168.0.121	80	D-Link
3			80	-- none
4			80	-- none

SNC-CS10
 SNC-CS11
 SNC-CS3
 SNC-CS50
 SNC-DF40
 SNC-DF50
 SNC-DF70
 SNC-DF80
 SNC-P1
 SNC-P5
 SNC-RX530
 SNC-RX550
 SNC-RX570
 SNC-RZ25
 SNC-RZ30
 SNC-RZ50
 SNC-Z20
 SNT-V704

Helpful Hints..
 The following list briefly describes the **Camera Setup** menu items:
Camera Channel: Select the number of analog cameras supported by one video server from the list.
Vendor: Displays the manufacturer's name.
Auto Detection: Click to automatically detect all the information (such as camera channel, protocol used, vendor, model number) of the camera.
Note: Some cameras will limit the login authority to the administrator only.

Internet | Protected Mode: Off 100%

dlink-6CE076 - Microsoft Internet Explorer provided by D-Link Australia

http://192.168.0.32/web/nvr/ipcam_recordsetting.asp?id=277748

dlink-6CE076

Product Page: DNS-726-4 Firmware Version: 1.00



DNS-726-4 // **LIVE VIDEO** **PLAYBACK** **SETUP** **MAINTENANCE** **STATUS** **HELP**

Wizard

Network Setup

Camera Search

Camera Setup

Audio and Video

Live & Playback Setup

Recording Schedule

Event Setup

E-Mail Setup

Dynamic DNS

Time and Date Setup

Logout

AUDIO AND VIDEO

You may wish to modify the parameters in this page or directly go to the camera web site. The NVR will display all the necessary information of the selected camera.

CAMERA PARAMETER

Camera Name: D-Link_DCS-3410

Video Format: Motion JPEG MPEG4

Frame Rate: 1

Resolution: 704x480

Bitrate: 2048

Audio: Enable Audio

CAMERA LIST

Index	Camera Name	Address	Vendor	Model	Original Web
1	D-Link_DCS-	192.168.0.120	D-Link	DCS-3410	Go to Web
2	D-Link_DCS-	192.168.0.121	D-Link	DCS-3415	Go to Web
3			-- none --	-- none --	Go to Web
4			-- none --	-- none --	Go to Web

Helpful Hints..

The following list briefly describes the **Audio and Video** menu items:

Video Format: Select the type of format the camera supports.

Frame rate: Select the frame rate of the camera.

Resolution: Select the resolution of the camera.

Quality: Select the image quality of the camera.

Audio: Select Enable Audio to view and enable audio recording.

Note
The system will automatically adjust the frame rate, based on the maximum frame rate of the camera.

Internet | Protected Mode: Off 100%

dlink-6CE076 - Microsoft Internet Explorer provided by D-Link Australia
 http://192.168.0.32/web/nvr/liveserver.asp?id=4773971

Product Page: DNS-726-4 Firmware Version: 1.00

D-Link

DNS-726-4
LIVE VIDEO
PLAYBACK
SETUP
MAINTENANCE
STATUS
HELP

Wizard

Network Setup

Camera Search

Camera Setup

Audio and Video

Live & Playback Setup

Recording Schedule

Event Setup

E-Mail Setup

Dynamic DNS

Time and Date Setup

Logout

LIVE AND PLAYBACK SETUP

For live viewing and playback over the internet, you need to dedicate a port for the streaming server.

LIVE STREAMING SERVER

Port

Maximum Connections

PLAYBACK SERVER

Port

Maximum Users

ALLOWED/BLOCKED LIST

Allowed List Enable

Blocked List Enable

to

IP Range	Index	IP Range	Access	Delete

Helpful Hints..

If NVR is placed behind a NAT router, open the port on the router for the Live and Playback streaming server. The following list briefly describes the **Live and Playback Setup** menu items:

Maximum Connections: The maximum number of remote connections is 32.

Maximum Users: The maximum number of users for the playback server is 8.

Allowed List: Allows only certain IP Addresses to log in for live view and playback

Blocked List: IP addresses in this list will always be blocked

Note
If the maximum number of connections is 16 and if a user connects to 4 cameras, the number of connected users is 4 and not 16.

Internet | Protected Mode: Off
100%

dlink-6CE076 - Microsoft Internet Explorer provided by D-Link Australia
 http://192.168.0.32/web/nvr/ipcam_schedule-beta.asp?id=163006

DNS-726-4 **LIVE VIDEO** **PLAYBACK** **SETUP** **MAINTENANCE** **STATUS** **HELP**

Wizard
 Network Setup
 Camera Search
 Camera Setup
 Audio and Video
 Live & Playback Setup
Recording Schedule
 Event Setup
 E-Mail Setup
 Dynamic DNS
 Time and Date Setup
 Logout

RECORDING SCHEDULE

You can set up individual cameras to record at specific times, day or night, one time or each day of the week.

RECORDING MODE


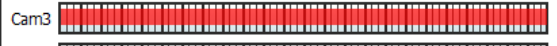
No Record
 Record by Schedule
 Always Record

Camera 1 Camera 2 Camera 3 Camera 4

VIDEO DATA

Automatic Overwrite Enable
 Store Videos Store Videos by Schedule Days

RECORDING SCHEDULE

Camera List	Schedule								
<ul style="list-style-type: none"> Camera List D-Link_DCS-3410 D-Link_DCS-3415 Camera 3 Camera 4 	<p> <input checked="" type="radio"/> Day <input type="radio"/> Week </p> <p>00 01 02 03 04 05 06 07 08 09 10 11 12 13 14 15 16 17 18 19 20 21 22 23 24</p> <p> Cam1  Cam2  Cam3  Cam4  </p> <p> <input type="button" value="Insert"/> <input type="button" value="Delete"/> <input type="button" value="Configure"/> </p> <table border="1" style="width: 100%; border-collapse: collapse; margin-top: 5px;"> <thead> <tr> <th style="width: 25%;">Start Time</th> <th style="width: 25%;">End Time</th> <th style="width: 25%;">Record</th> <th style="width: 25%;">Audio</th> </tr> </thead> <tbody> <tr> <td>00:00</td> <td>24:00</td> <td>Always</td> <td>Disable</td> </tr> </tbody> </table>	Start Time	End Time	Record	Audio	00:00	24:00	Always	Disable
Start Time	End Time	Record	Audio						
00:00	24:00	Always	Disable						

Helpful Hints..

The following list briefly describes the **Recording Schedule** menu items:

Automatic Overwrite: Select this option to automatically empty disk space when the disk space is full. This will overwrite the earliest recorded video with the latest video one day at a time.

Store Videos by Schedule: Set duration to store recorded video clips. After this, the clips will be purged and cannot be recovered. **Insert:** Insert new schedules.

Delete: Delete the selected schedule.

Configure: Modify the schedule and recording mode setting.

Notes

- The **Always Record** option will start recording immediately.
- When configuring the **Motion Detection** event, ensure to setup the motion detection function in your camera first.
- When changing the motion detection settings of your camera, ensure to disconnect the NVR and then re-connect to update the settings in your NVR.
- When setting up an event, a video motion or digital input can be used to trigger the other cameras. This means that when motion is detected by a camera, it can send out warning signals to the

Internet | Protected Mode: Off 100%

dlink-6CE076 - Microsoft Internet Explorer provided by D-Link Australia
 http://192.168.0.32/web/nvr/ipcam_event.asp?id=4009444

Product Page: DNS-726-4 Firmware Version: 1.00

D-Link

DNS-726-4
LIVE VIDEO
PLAYBACK
SETUP
MAINTENANCE
STATUS
HELP

Wizard

Network Setup

Camera Search

Camera Setup

Audio and Video

Live & Playback Setup

Recording Schedule

Event Setup

E-Mail Setup

Dynamic DNS

Time and Date Setup

Logout

EVENT SETUP

Select the camera from the **Camera List**, and then choose one of the following three events. Connection Lost, Motion Detected or External Input.

EVENT ACTION MANAGER

Camera List	Event & Action				
<div style="border: 1px solid #ccc; padding: 5px;"> <div style="display: flex; justify-content: space-between; border-bottom: 1px solid #ccc;"> Configure Output Add Delete Configure </div> <div style="display: flex; border-bottom: 1px solid #ccc;"> E-Mail </div> <ul style="list-style-type: none"> <input type="checkbox"/> Connection Lost <input type="checkbox"/> Motion Detected <input type="checkbox"/> D-Link_DCS-3410 Input#0 <input type="checkbox"/> D-Link_DCS-3410 Input#1 <input type="checkbox"/> D-Link_DCS-3415 <input type="checkbox"/> Camera 3 <input type="checkbox"/> Camera 4 <input type="checkbox"/> System <input type="checkbox"/> Hard Disk Space Full </div>	<table border="1" style="width: 100%; border-collapse: collapse;"> <thead> <tr> <th style="width: 50%;">Action</th> <th style="width: 50%;">Options</th> </tr> </thead> <tbody> <tr> <td style="height: 100px;"> </td> <td> </td> </tr> </tbody> </table>	Action	Options		
Action	Options				

Helpful Hints..

Connection Lost: When a connection between the camera and NVR is lost, the NVR triggers an action.

Motion Detected: When video motion is detected, the camera triggers an action.

Input: Any external input can trigger an action.

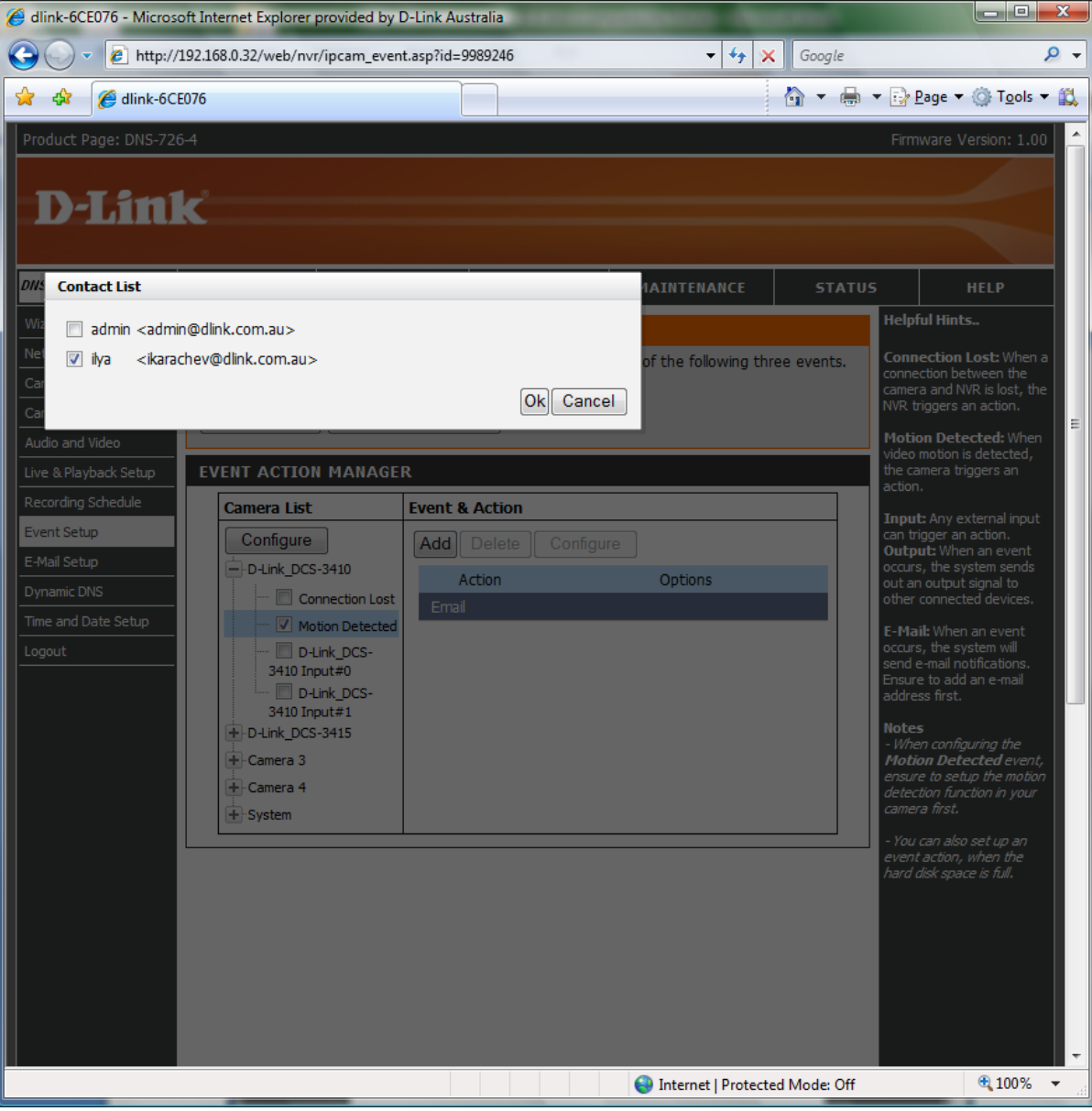
Output: When an event occurs, the system sends out an output signal to other connected devices.

E-Mail: When an event occurs, the system will send e-mail notifications. Ensure to add an e-mail address first.

Notes

- When configuring the **Motion Detected** event, ensure to setup the motion detection function in your camera first.
- You can also set up an event action, when the hard disk space is full.

http://192.168.0.32/web/nvr/ipcam_event.asp?id=4009444# Internet | Protected Mode: Off 100%



Contact List

admin <admin@dlink.com.au>

ilya <ikarachev@dlink.com.au>

Ok Cancel

EVENT ACTION MANAGER

Camera List	Event & Action				
<p>Configure</p> <ul style="list-style-type: none">- D-Link_DCS-3410<ul style="list-style-type: none"><input type="checkbox"/> Connection Lost<input checked="" type="checkbox"/> Motion Detected- D-Link_DCS-3410 Input#0- D-Link_DCS-3410 Input#1+ D-Link_DCS-3415+ Camera 3+ Camera 4+ System	<p>Add Delete Configure</p> <table border="1"><thead><tr><th>Action</th><th>Options</th></tr></thead><tbody><tr><td>Email</td><td></td></tr></tbody></table>	Action	Options	Email	
Action	Options				
Email					

dlink-6CE076 - Microsoft Internet Explorer provided by D-Link Australia
 http://192.168.0.32/web/nvr/ipcam_event.asp?id=9989246

Product Page: DNS-726-4 Firmware Version: 1.00

D-Link

DNS-726-4
LIVE VIDEO
PLAYBACK
SETUP
MAINTENANCE
STATUS
HELP

Wizard

Network Setup

Camera Search

Camera Setup

Audio and Video

Live & Playback Setup

Recording Schedule

Event Setup

E-Mail Setup

Dynamic DNS

Time and Date Setup

Logout

EVENT SETUP

Select the camera from the **Camera List**, and then choose one of the following three events. Connection Lost, Motion Detected or External Input.

EVENT ACTION MANAGER

Camera List	Event & Action				
<div style="margin-bottom: 5px;"><input type="button" value="Configure"/></div> <ul style="list-style-type: none"> <input type="checkbox"/> D-Link_DCS-3410 <ul style="list-style-type: none"> <input type="checkbox"/> Connection Lost <input checked="" type="checkbox"/> Motion Detected <input type="checkbox"/> D-Link_DCS-3410 Input#0 <input type="checkbox"/> D-Link_DCS-3410 Input#1 <input type="checkbox"/> D-Link_DCS-3415 <input type="checkbox"/> Camera 3 <input type="checkbox"/> Camera 4 <input type="checkbox"/> System 	<div style="margin-bottom: 5px;"> <input type="button" value="Add"/> <input type="button" value="Delete"/> <input type="button" value="Configure"/> </div> <table border="1" style="width: 100%; border-collapse: collapse;"> <thead> <tr style="background-color: #3498db;"> <th>Action</th> <th>Options</th> </tr> </thead> <tbody> <tr> <td>Email</td> <td>admin,ilya</td> </tr> </tbody> </table>	Action	Options	Email	admin,ilya
Action	Options				
Email	admin,ilya				

Helpful Hints..

Connection Lost: When a connection between the camera and NVR is lost, the NVR triggers an action.

Motion Detected: When video motion is detected, the camera triggers an action.

Input: Any external input can trigger an action.

Output: When an event occurs, the system sends out an output signal to other connected devices.

E-Mail: When an event occurs, the system will send e-mail notifications. Ensure to add an e-mail address first.

Notes

- When configuring the **Motion Detected** event, ensure to setup the motion detection function in your camera first.

- You can also set up an event action, when the hard disk space is full.

dlink-6CE076 - Microsoft Internet Explorer provided by D-Link Australia
http://192.168.0.32/web/nvr/smtp.asp?id=1297905

Product Page: DNS-726-4 Firmware Version: 1.00

D-Link

DNS-726-4 // LIVE VIDEO PLAYBACK SETUP MAINTENANCE STATUS HELP

Wizard
Network Setup
Camera Search
Camera Setup
Audio and Video
Live & Playback Setup
Recording Schedule
Event Setup
E-Mail Setup
Dynamic DNS
Time and Date Setup
Logout

E-MAIL SETUP

You can set up your SMTP server to send e-mail alerts to notify you when an event occurs.

SMTP SERVER

Server Address: 192.168.0.249
Sender: NVR@dlink.com.au
Subject: Message from NVR
Body of Message: Hello Administrator, This message is from your NVR device.
SMTP Authentication:
User Name: ilya Password:

CONTACT

User Name: _____ Email: _____

Name	Email	Delete
admin	admin@dlink.com.au	<input checked="" type="checkbox"/>
ilya	ikarachev@dlink.com.au	<input checked="" type="checkbox"/>

Helpful Hints..
The following list briefly describes the SMTP Server settings menu items:
Message Content: Enter your e-mail message for different events.
SMTP Authentication: Before sending out an e-mail, enter the user name and password for SMTP authentication.
Add Contact: Add a new contact into the contact list.

Done Internet | Protected Mode: Off 100%

dlink-6CE076 - Microsoft Internet Explorer provided by D-Link Australia
http://192.168.0.32/web/tools/ddns.asp?id=5129324

Product Page: DNS-726-4 Firmware Version: 1.00

D-Link

DNS-726-4 // LIVE VIDEO PLAYBACK **SETUP** MAINTENANCE STATUS HELP

Wizard
Network Setup
Camera Search
Camera Setup
Audio and Video
Live & Playback Setup
Recording Schedule
Event Setup
E-Mail Setup
Dynamic DNS
Time and Date Setup
Logout

DDNS SETUP

The Dynamic DNS feature allows you to host a server (Web, FTP, NVR, etc...) using a domain name that you have purchased (www.whateveryournameis.com) with your dynamically assigned IP address. Most broadband Internet Service Providers assign dynamic (changing) IP addresses. Using a DDNS service provider, your friends can enter your host name to connect to your NVR no matter what your IP address is.

[Sign up for D-Link Free DDNS service at www.DLinkDDNS.com.](http://www.DLinkDDNS.com)

Save Settings Don't Save Settings

DDNS SETTING

DDNS Enable Disable

Server Address << Select Dynamic DNS Server

Host Name (e.g. www.dlinkddns.com
www.DynDNS.org (Custom)
www.DynDNS.org (Free)

Username or Key

Password or Key

Verify Password or Key

Status

Helpful Hints...
To use this feature, you must first have a Dynamic DNS account from one of the providers in the drop down menu.

Internet | Protected Mode: Off 100%

dlink-6CE076 - Microsoft Internet Explorer provided by D-Link Australia
http://192.168.0.32/web/tools/timezone.asp?id=8391123

Product Page: DNS-726-4 Firmware Version: 1.00

D-Link

DNS-726-4 // LIVE VIDEO PLAYBACK **SETUP** MAINTENANCE STATUS HELP

Wizard
Network Setup
Camera Search
Camera Setup
Audio and Video
Live & Playback Setup
Recording Schedule
Event Setup
E-Mail Setup
Dynamic DNS
Time and Date Setup
Logout

TIME AND DATE SETUP

Set the system time by syncing with the NTP server and your computer or manually enter the time and date.

Time: 06:40:45 Date: 03/23/09

TIME ZONE SETTINGS

Time Zone (GMT+10:00) Canberra, Melbourne, Sydney

NTP SERVER

NTP Server <<
Select NTP Server
Select NTP Server
ntp1.dlink.com
ntp.dlink.com.tw

FROM THIS COMPUTER

Set time from this computer

MANUALLY SET THE TIME AND DATE

Month 03 Day 23 Year 2009
Hour 06 Minute 40 Second 06

Helpful Hints..
Using the NTP option will guarantee the time to be accurate provided that the DNS-726-4 is connected to the Internet and your DNS values (in SETUP > LAN) are valid.

Internet | Protected Mode: Off 100%

Product Page: DNS-726-4 Firmware Version: 1.00

D-Link

DNS-726-4
LIVE VIDEO
PLAYBACK
SETUP
MAINTENANCE
STATUS
HELP

User Management

RAID

Backup and Restore

Firmware Update

Logout

USERS

Set User Name and Password for user privileges.

CREATE A USER

User Name

Password

Confirm Password

Live View Privileges

Channel 1 Channel 2
 Channel 3 Channel 4
 PTZ Control IO Control

Playback Privileges

Channel 1 Channel 2
 Channel 3 Channel 4
 Backup Data Delete Data

USER LIST

User Name	Modify Password	Delete User	Modify User Privileges
admin			
guest			

Helpful Hints..

User passwords must be at least five characters long.

Administrator can management every configuration, and this account is not deletable. Default password of administrator password is empty, it is strongly recommend to change it when first login. If user forgets the administrator password, please press the reset button from the rear panel of the device to reset to factory default.

Note: Reset to factory default will clear all the settings.

Done
Internet | Protected Mode: Off
100%

dlink-6CE076 - Microsoft Internet Explorer provided by D-Link Australia
http://192.168.0.32/web/formatHD/raid_wizard0.asp?id=9727751
Product Page: DNS-726-4 Firmware Version: 1.00

D-Link

DNS-726-4 // LIVE VIDEO PLAYBACK SETUP MAINTENANCE STATUS HELP

User Management RAID Backup and Restore Firmware Update Logout	<h3>HARD DRIVE CONFIGURATION</h3> <p>Change the hard drive configuration or format the newly inserted drive. If you are not first time to configure your hard disk on the NVR, please refer to current disk status from STATUS > Device Info > HARD DRIVE INFORMATION before you make any changes.</p> <h3>RAID CONFIGURATION</h3> <p>Set RAID type and re-format the hard disk</p>	<h3>Helpful Hints..</h3> <p>To see information on the current hard disk configuration, go to the STATUS page.</p> <p>The NVR supports four different disk configuration types: Standard, where each drive is a unique volume, JBOD, which combines both drives in a linear fashion to create one volume, as well as RAID 0 and RAID 1.</p> <p>RAID, short for Redundant Array of Independent Disks, is a combination of two or more disks with the aim of providing fault tolerance and improving performance. There are several different levels of RAID, with each providing a different method of sharing or distributing data amongst the drives. The NVR supports RAID levels 0 and 1.</p>
---	---	---

Done Internet | Protected Mode: Off 100%

dlink-6CE076 - Microsoft Internet Explorer provided by D-Link Australia
 http://192.168.0.32/web/tools/backup.asp?id=2925168

Product Page: DNS-726-4 Firmware Version: 1.00

D-Link

DNS-726-4 // LIVE VIDEO PLAYBACK SETUP MAINTENANCE STATUS HELP

User Management
 RAID
 Backup and Restore
 Firmware Update
 Logout

BACKUP AND RESTORE

User can save the configurations to a file or restore it once necessary. Restart the NVR can keep system work freshly. Reset the NVR will restore all configuration to factory default.

BACKUP AND RESTORE

Save Configuration File

Load Configuration File

RESTART

System Restart

DEFAULT

Restore to factory default settings.

Set Configuration IP DDNS

DEVICE SETTINGS

Name

Helpful Hints..

Back and Restore: User can Save and backup configuration as a file to the specified location and restore it after reset to factory default. User also can restore the configuration file to another NVR.

Restart: If you found NVR not work properly or crash from some unknown reason, please restart NVR. Restart NVR will take about 1 and half minutes.

Reset to Default: This will reset all configurations to factory default. User can check the preserve functions from IP or DDNS, thus the remote connection will remain after reset.

Internet | Protected Mode: Off 100%

dlink-6CE076 - Microsoft Internet Explorer provided by D-Link Australia
 http://192.168.0.32/web/tools/firmware_upload.asp?id=7713577

Product Page: DNS-726-4 Firmware Version: 1.00

D-Link

DNS-726-4 // LIVE VIDEO PLAYBACK SETUP MAINTENANCE STATUS HELP

User Management
 RAID
 Backup and Restore
 Firmware Update
 Logout

FIRMWARE UPGRADE

A new firmware upgrade may be available for your NVR. D-Link recommends you to maintain firmware updates to improve the performance and functionality of your NVR.

- For firmware upgrades, click [D-Link Support Page](#) and download to save the latest version of the NVR to your local hard drive.
- Click **Browse** to locate the file on your local hard drive and then click **Apply** to start the firmware upgrade.

FIRMWARE INFORMATION

Current Firmware Version 1.00
 Firmware Date 10/23/2008
 File Path

Helpful Hints..

Firmware updates are released periodically to maintain and improve the functionality of your DNS-726-4 and also to add features. If you run into a problem with a specific feature of the DNS-726-4, check our support site by clicking on the [D-Link Support Page](#) link and see if an updated firmware is available for your DNS-726-4.

Internet | Protected Mode: Off 100%

dlink-6CE076 - Microsoft Internet Explorer provided by D-Link Australia
 http://192.168.0.32/web/nvr/ipcam_status.asp?id=5267450

Product Page: DNS-726-4 Firmware Version: 1.00

D-Link

[DNS-726-4](#) //
 [LIVE VIDEO](#)
[PLAYBACK](#)
[SETUP](#)
[MAINTENANCE](#)
[STATUS](#)
[HELP](#)

Camera Status

Device Info

System Log

NVR Log

Logout

CAMERA STATUS

This page displays the camera and recording status of the camera.

Index	Name	Address	Connection Status	Recording Status	Frame Rate	Bit Rate
1	D-Lin	192.168.0.120	Connected <input type="button" value="Disconnect"/>	No Recording	23.3 fps	2076.7 Kbps
2	D-Lin	192.168.0.121	Connected <input type="button" value="Disconnect"/>	No Recording	13.3 fps	1418.3 Kbps
3			Disconnect <input type="button" value="Connect"/>	No Recording	0.0 fps	0.0 Kbps
4			Disconnect <input type="button" value="Connect"/>	No Recording	0.0 fps	0.0 Kbps
					Total Bit Rate:	3495 Kbps

Last update on Mon Mar 23 17:51:55 2009

DISK STATUS

Total Hard Drive Capacity: 492515 MB
Unused Space: 492515 MB
Estimated Total Recording Time: 13 day(s) and 7 hour(s)
Estimated Remaining Recording Time: 13 day(s) and 7 hour(s)

Helpful Hints..

The following list briefly describes the Camera and Recording Status menu items:

Connection Status: Click Connect or Disconnect to change the connection status.

Recording Status: Set the recording schedule of the camera.

Frame Rate: Displays the frame rate of the camera.

Bit Rate: Displays the transmission bit rate of the camera.

Done Internet | Protected Mode: Off 100%

Product Page: DNS-726-4 Firmware Version: 1.00


D-Link

DNS-726-4 // **LIVE VIDEO** | **PLAYBACK** | **SETUP** | **MAINTENANCE** | **STATUS** | **HELP**



Logout ↑ [A] [M] ▶ ⏸ ⏹

D-Link_DCS-3410
Playing
2098.7 kbps



- ▶ D-Link_DCS-3
- ▶ D-Link_DCS-3

< ||| >

1 4

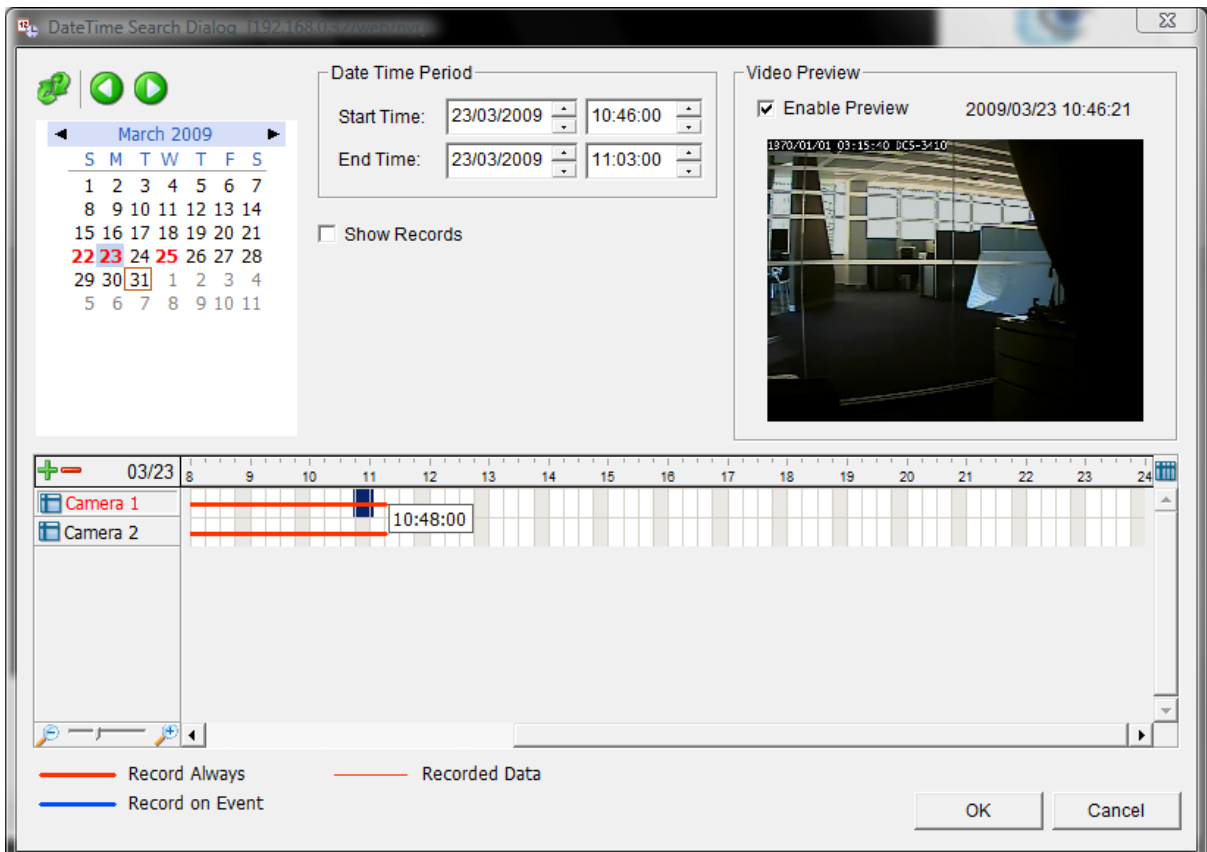
📷 🔄



+ Zoom -

Set Preset Go

Done Internet | Protected Mode: Off 100%



Intelligent Search Tool

Alarm Event Type

- General Motion
- Foreign Object
- Missing Object
- Lose Focus
- Camera Occlusion

Region Definition

- Define detection zone
- Define object size

All Clear

Draw Region

Stop when found

Search Stop

2009/03/23 10:46:00 1x

Intelligent Search Tool

Alarm Event Type

- General Motion

Sensitivity: [Slider]

Interval: [Slider]

Region Definition

- Define detection zone
- Define object size

All Clear

Draw Region

Stop when found

Search Stop

Region Define

Select Deselect Cancel

2009/03/23 10:46:00 1x



Intelligent Search Tool

Alarm Event Type
General Motion

Sensitivity: [Slider]
Interval: [Slider]

Region Definition
 Define detection zone
 Define object size

All Clear

Draw Region
 Stop when found

Search Stop

Search Result Clear

Event Time
2009/03/25 16:08:00
2009/03/25 16:08:04
2009/03/25 16:08:17
2009/03/25 16:09:57
2009/03/25 16:10:02
2009/03/25 16:10:04
2009/03/25 16:10:09
2009/03/25 16:11:01

PLAYBACK SETUP MAINTENANCE STATUS HELP

D-ViewCam NVR

Open Record Setting

1 4

Search

Enhancement Save Video Save Image Print Backup

Speed [Slider] [A] [M]

2009/03/25 16:08:08 1x

Cue [Play] [Pause]

Post Processing Tool

General Setting
 Apply active channel
 Apply all channels

Filter Setting
 Visibility [Slider]
 Sharpen [Slider]
 Brightness [Slider]
 Contrast [Slider]
 Grey Scale

Default OK

DCS-3410

D-ViewCam NVR

Open Record Setting

1 4

Search

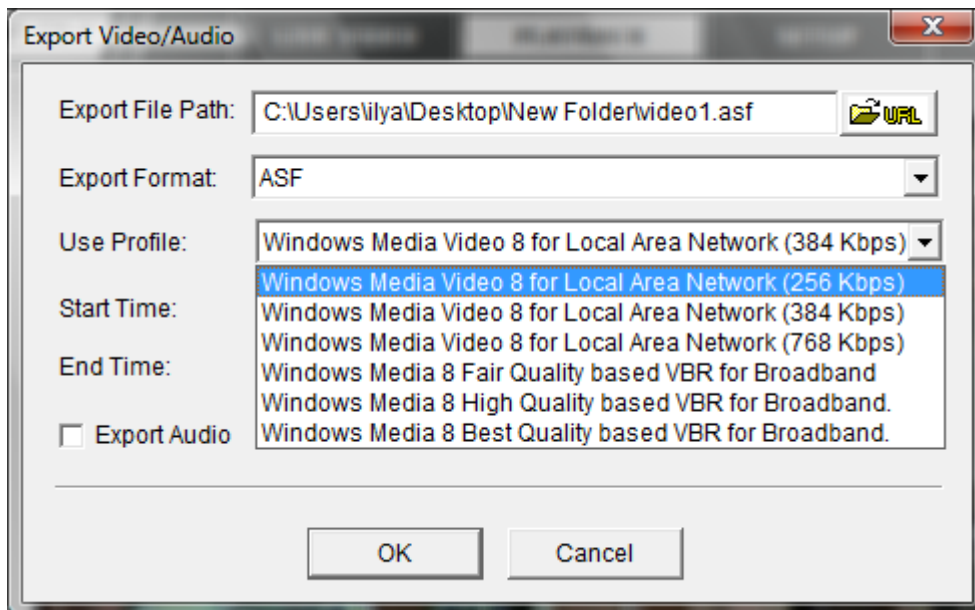
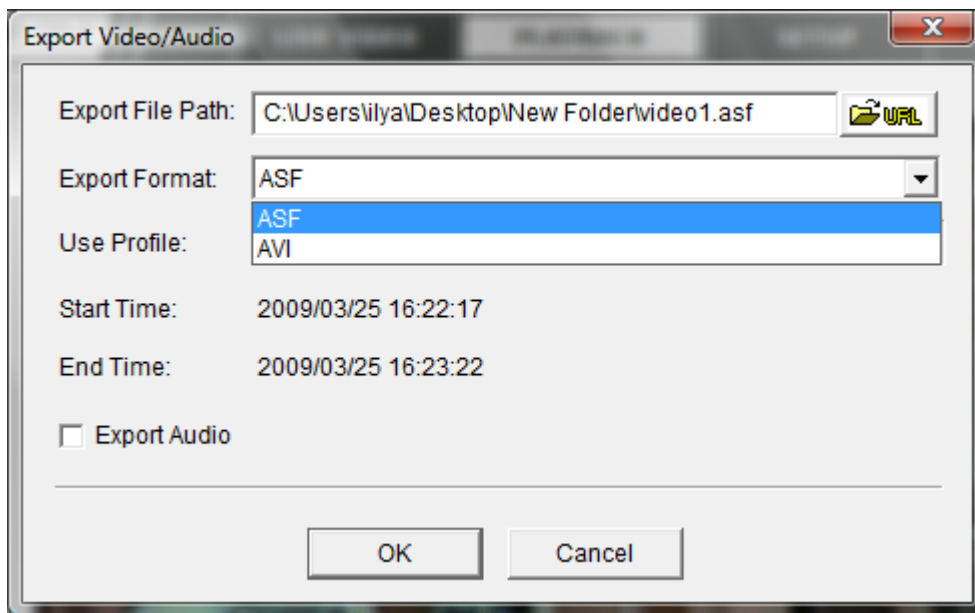
Enhancement Save Video Save Image Print Backup

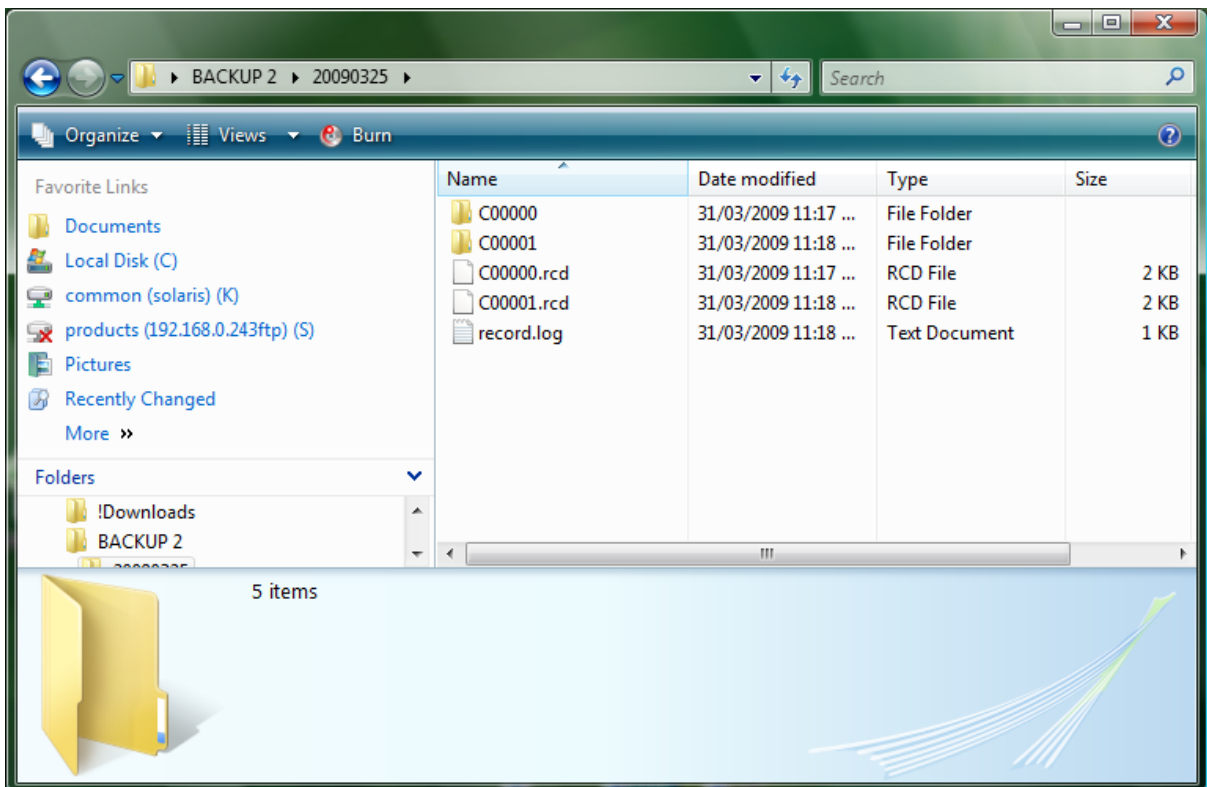
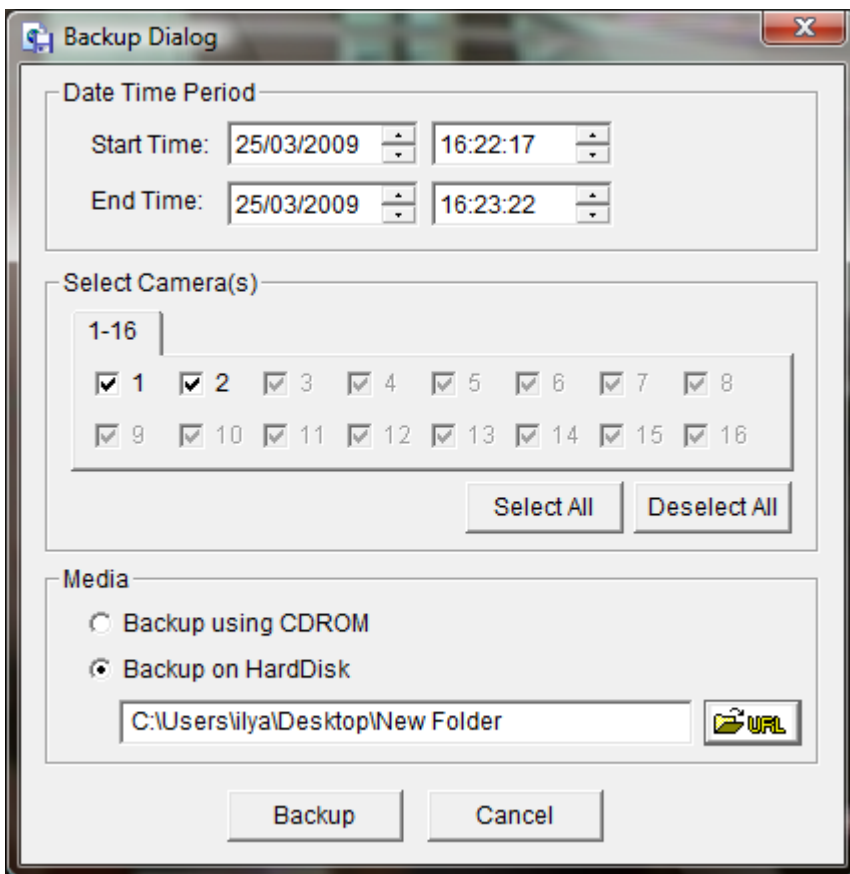
Logout

Speed [Slider] [A] [M]

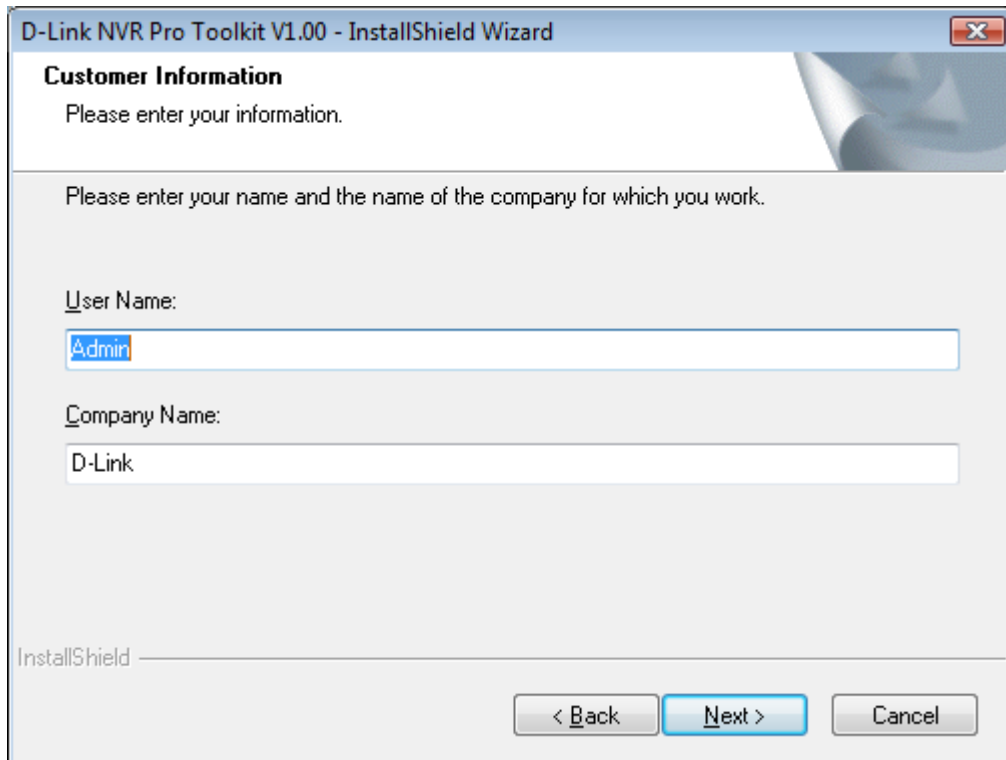
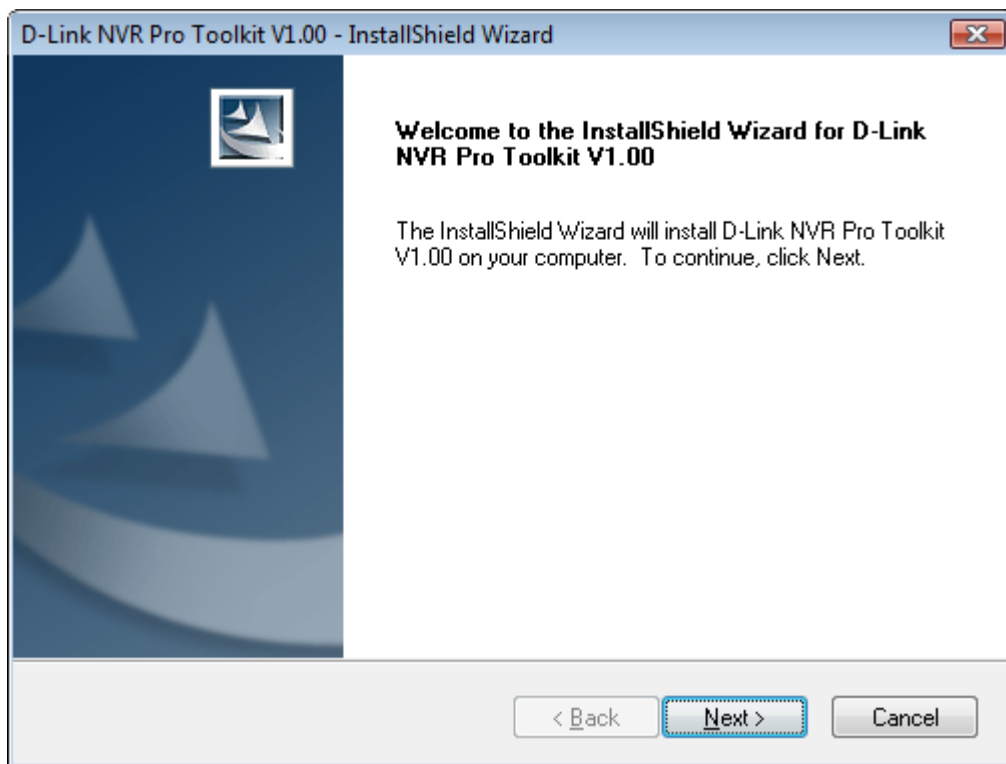
2009/03/25 16:22:00 1x

Cue [Play] [Pause]

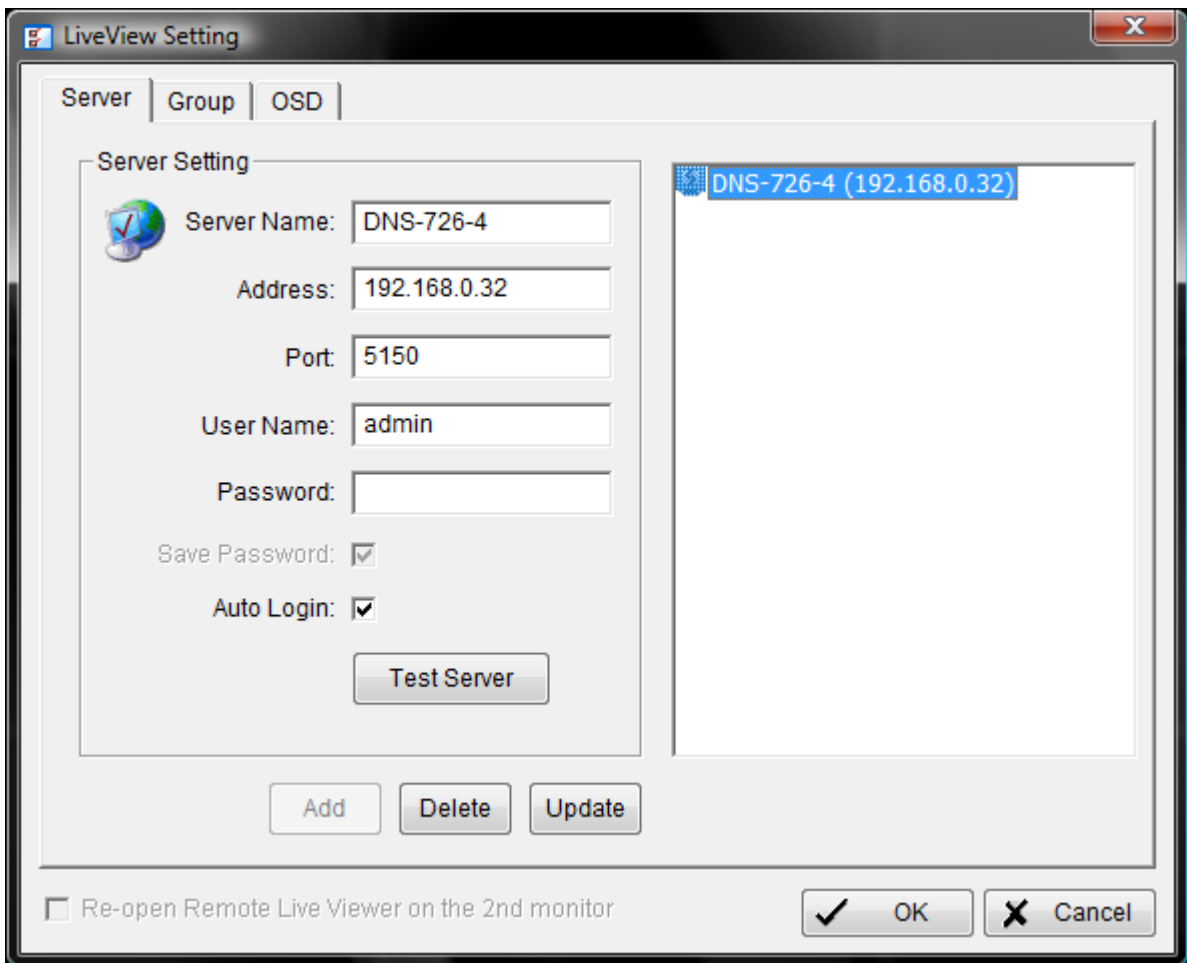
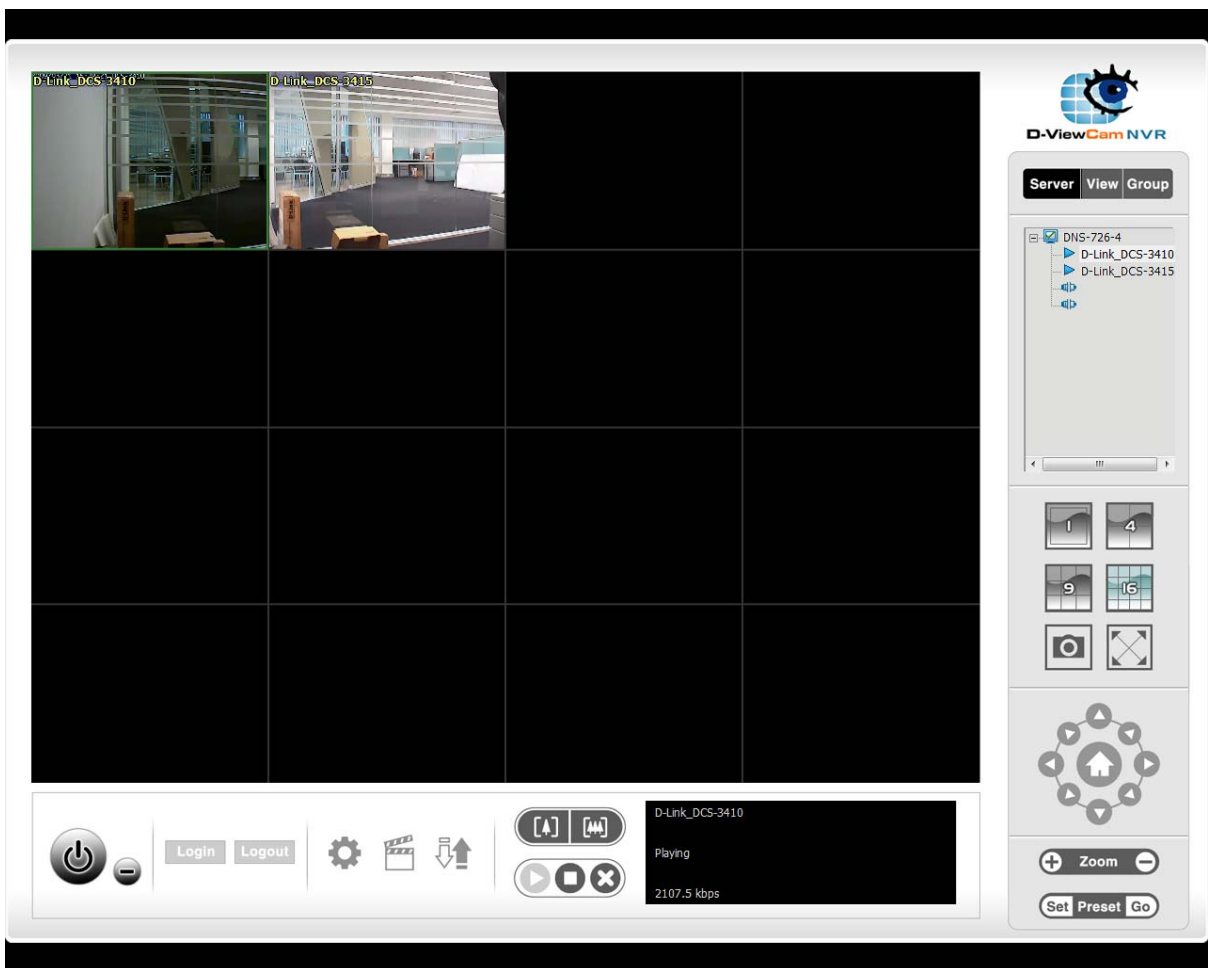


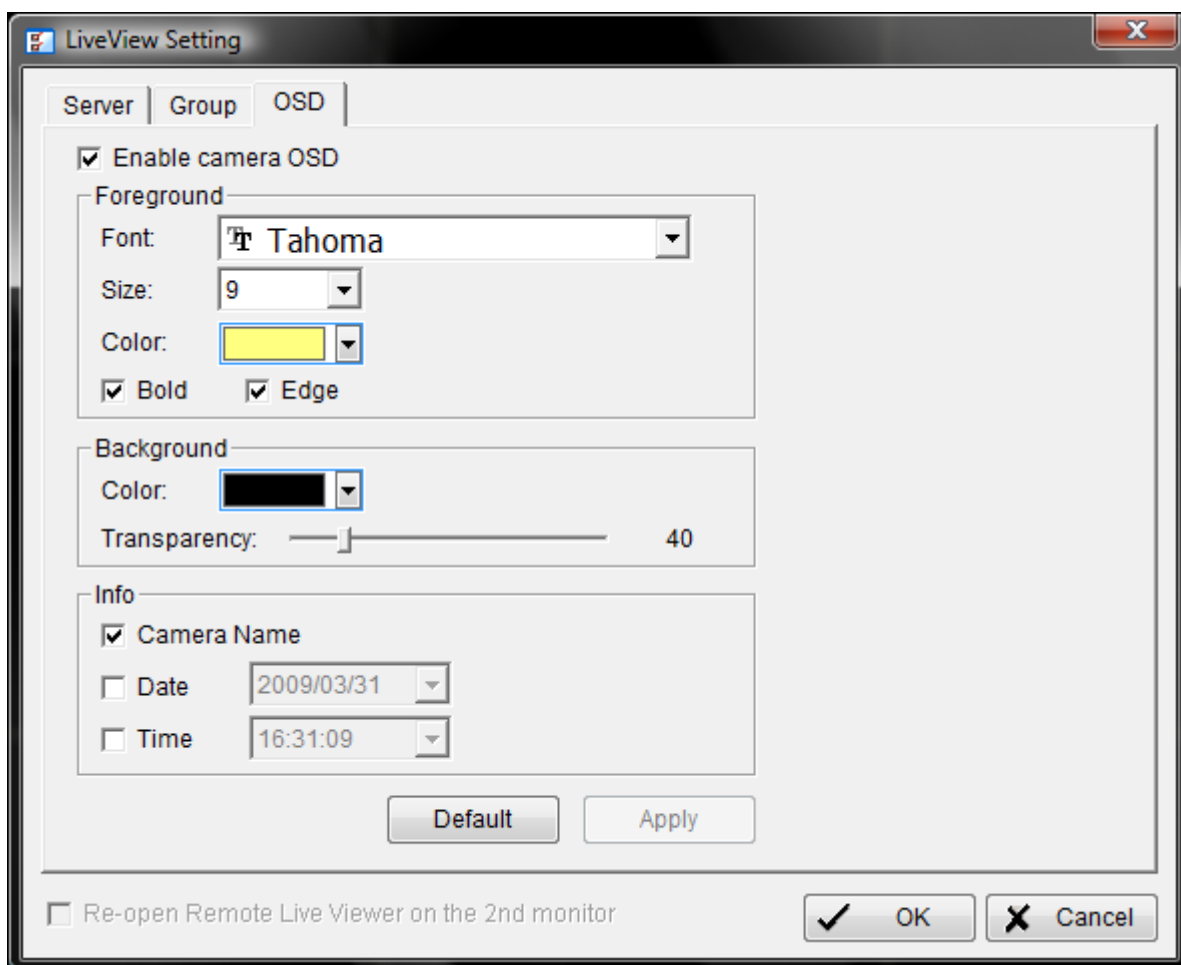
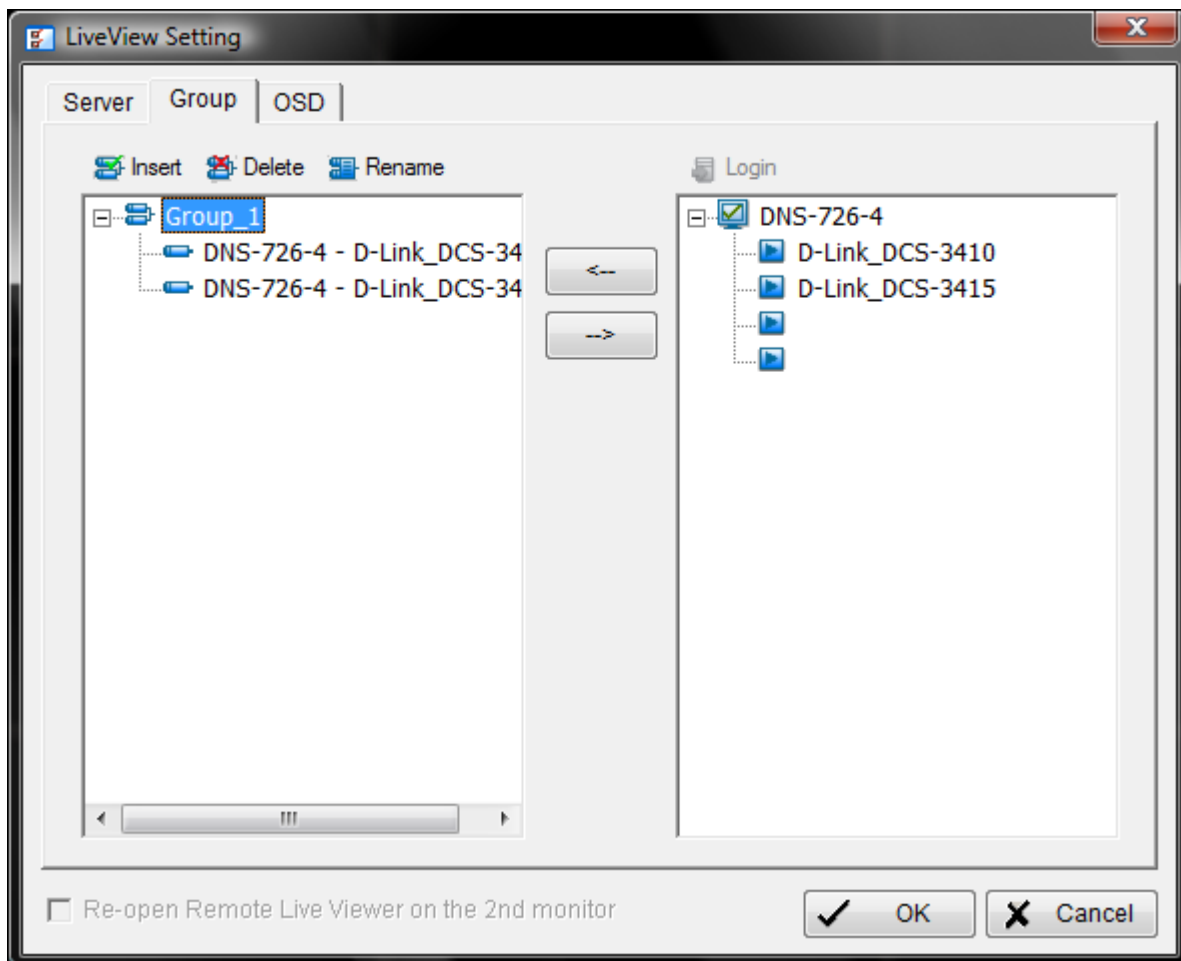


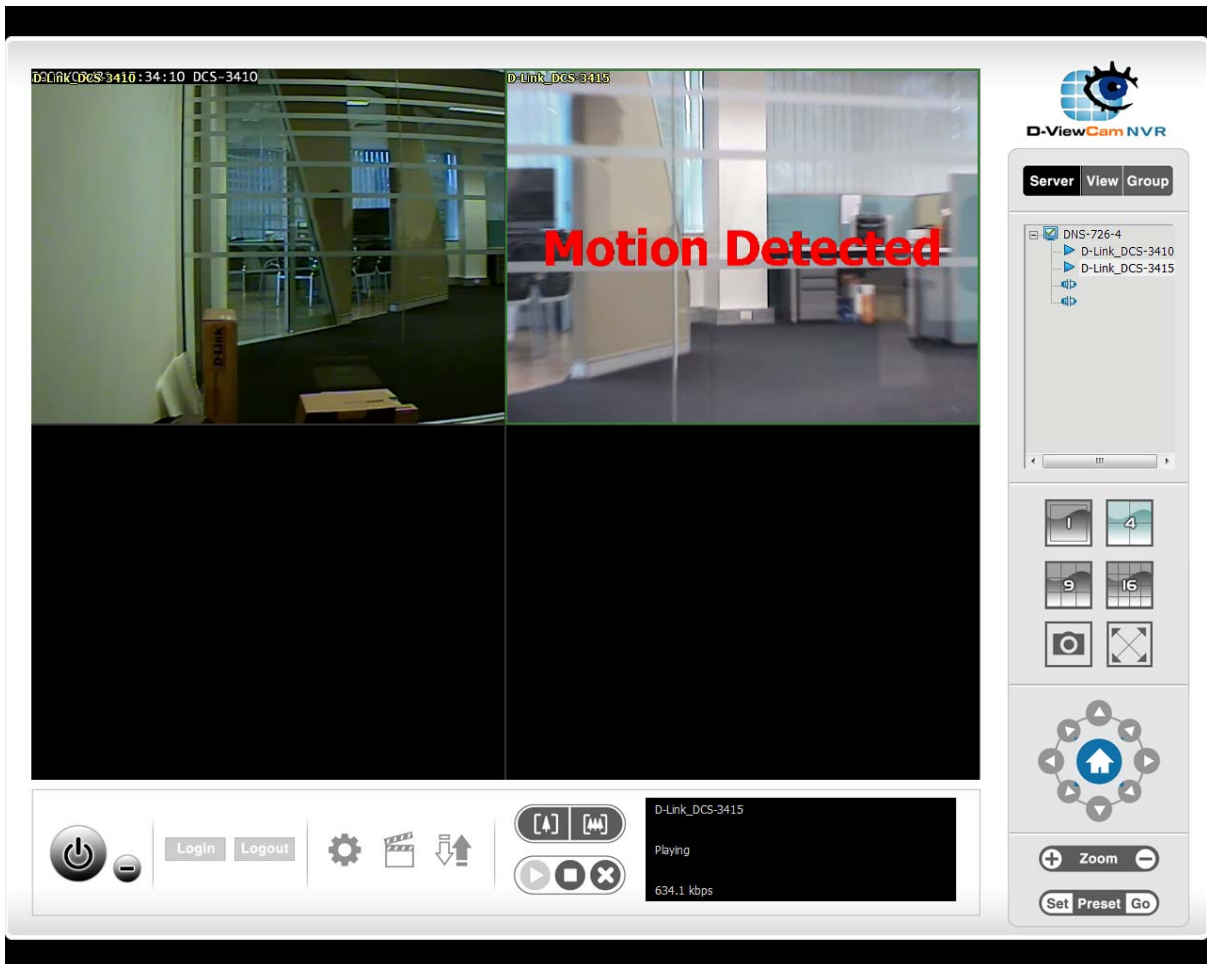
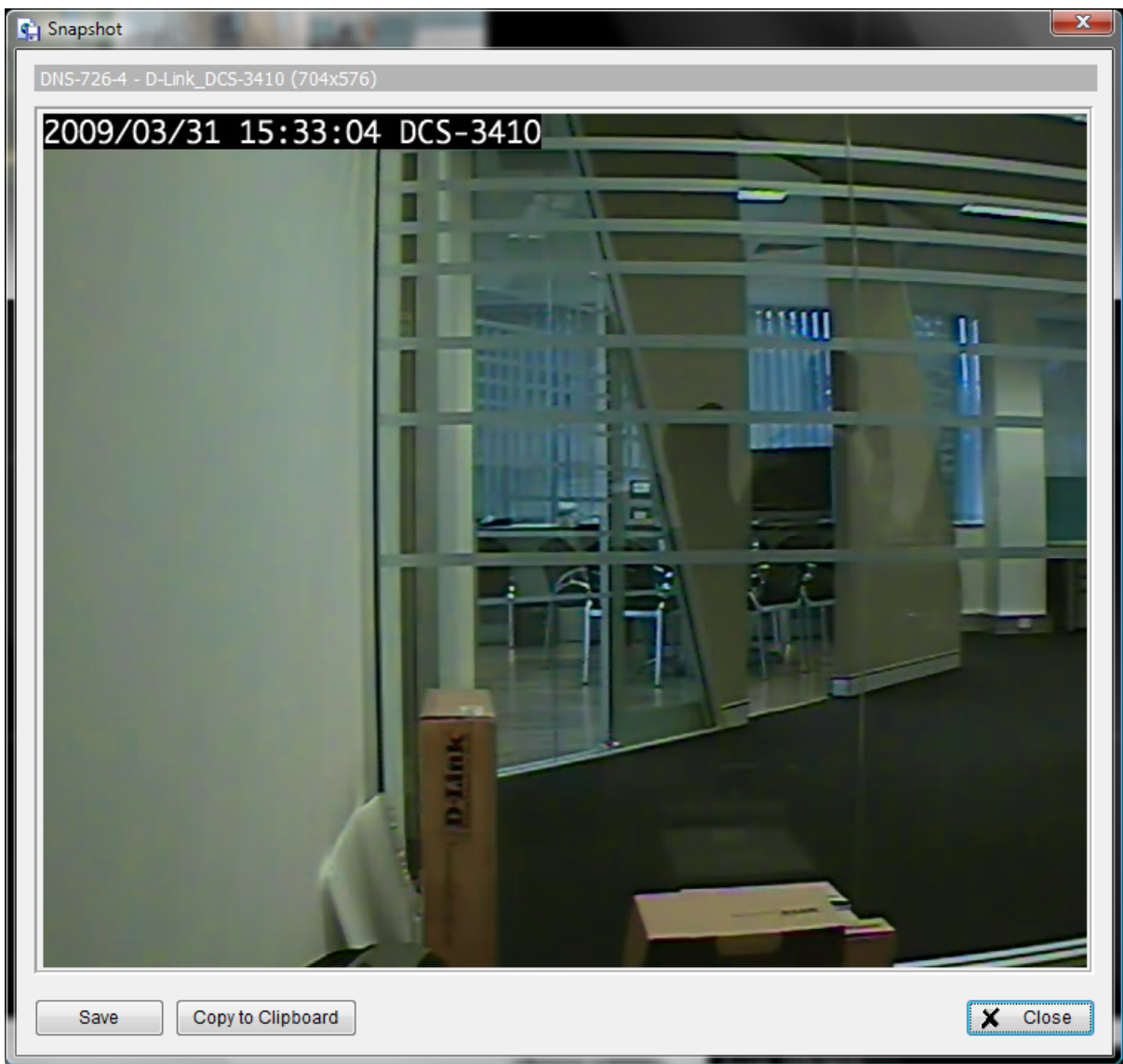
NVR Pro:



Multiple NVR Viewer:








Playback Manager:

The screenshot shows the Playback Manager interface with a "Remote Playback Site Management" dialog box open. The dialog box has a "Server Setting" section with the following fields: Server Name (DNS-726-4), Address (192.168.0.32), Port (5160), User Name (admin), Password (empty), and Save Password (checked). There is a "Test Server" button and "Add", "Delete", and "Update" buttons at the bottom. The background shows a video player with a "STOP" button and a date/time display of "2009/03/31".

The screenshot shows the Playback Manager interface with a "Date Time Search Dialog" open. The dialog box has a "Date Time Period" section with a date of "03/25" and a time range from "16:35:00" to "16:42:00". There is a "Video Preview" section with a "Video Preview" window showing a video frame. Below the dialog is a timeline with "Record Always" and "Record on Event" options. The background shows a video player with a "PAUSE" button and a date/time display of "2009/03/25".

Backup and File Manager

Backup System - Login



Please enter user name and password






Server: Port:

User Name:

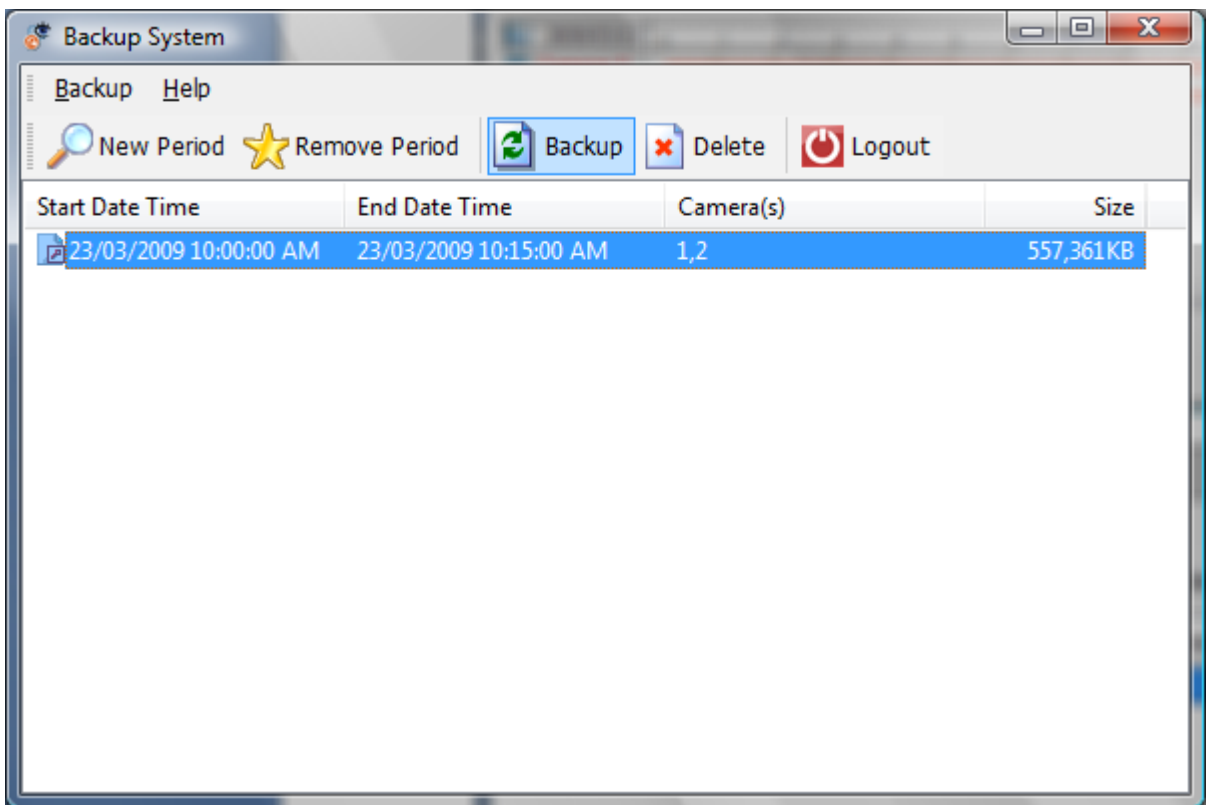
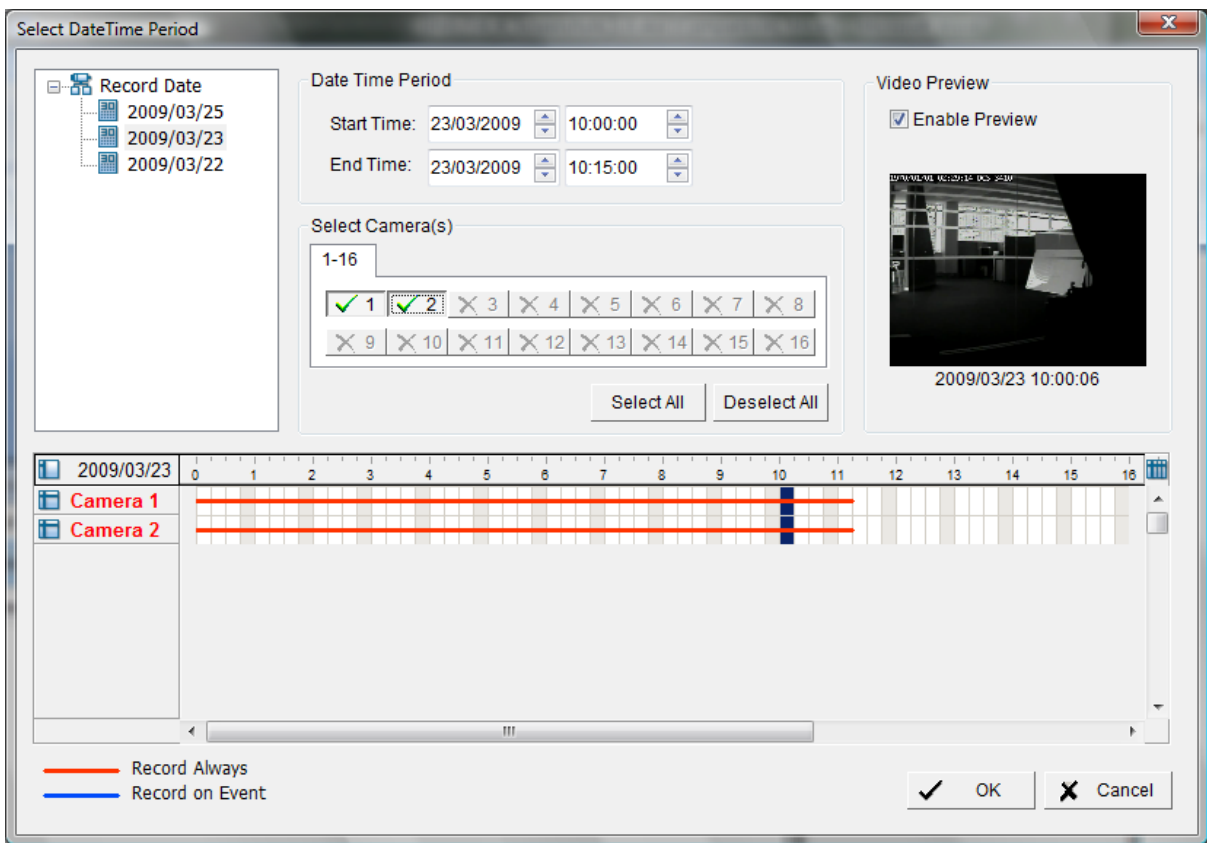
Password:

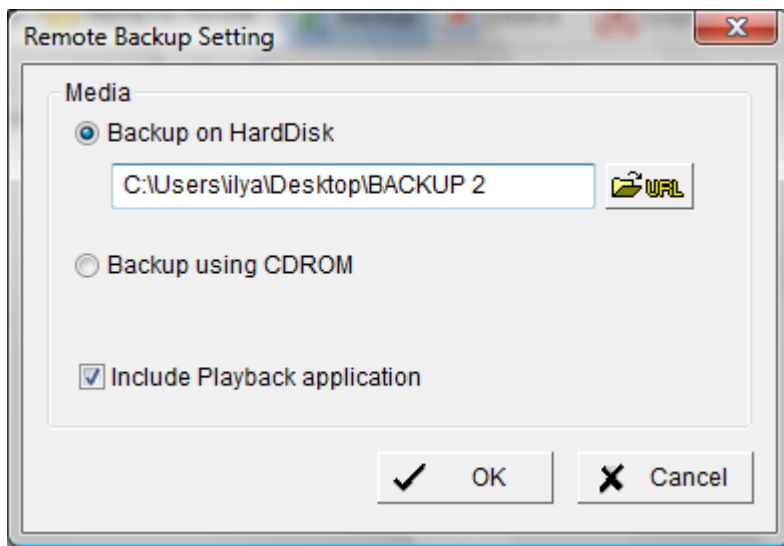
Backup System

Backup Help

 New Period  Remove Period  Backup  Delete  Logout

Start Date Time	End Date Time	Camera(s)	Size
-----------------	---------------	-----------	------





Video files and the Playback application (Playback.exe) are exported:

