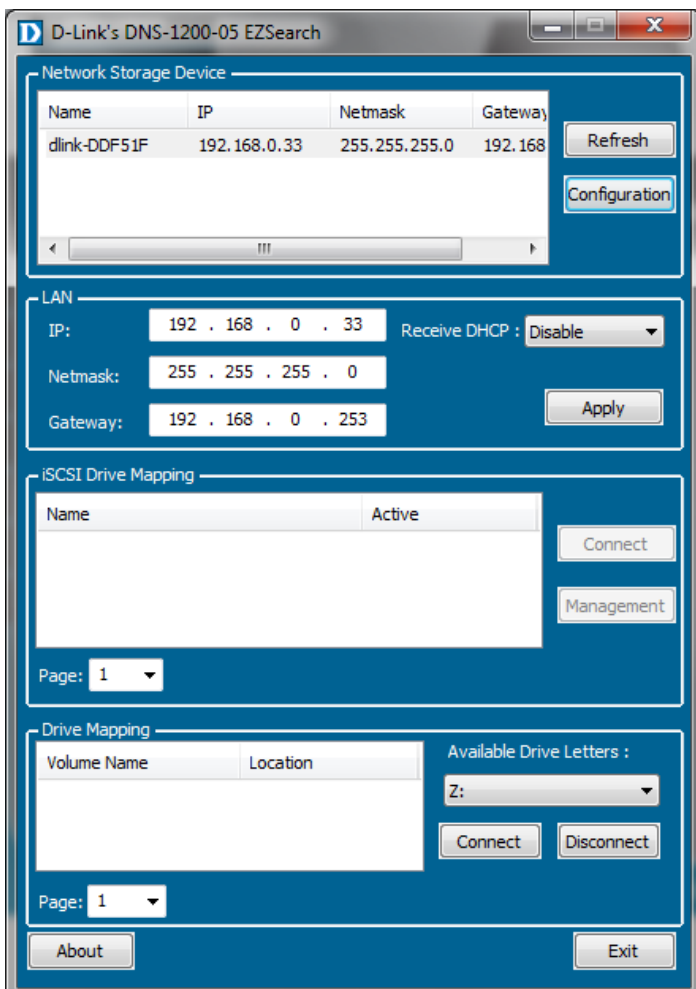
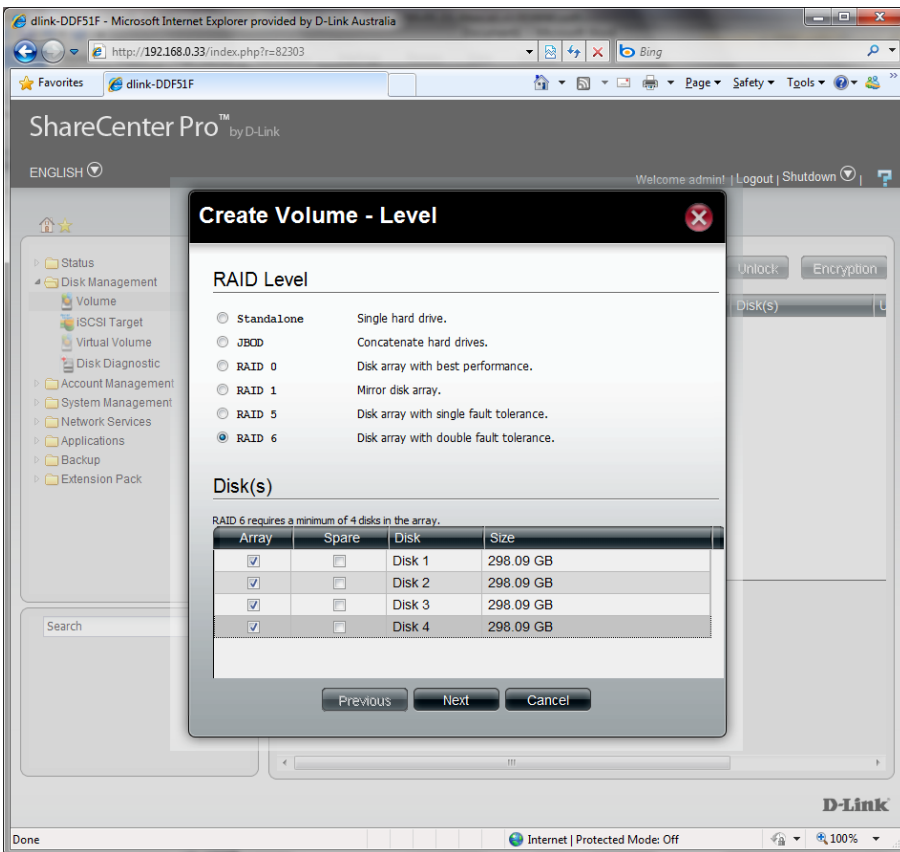
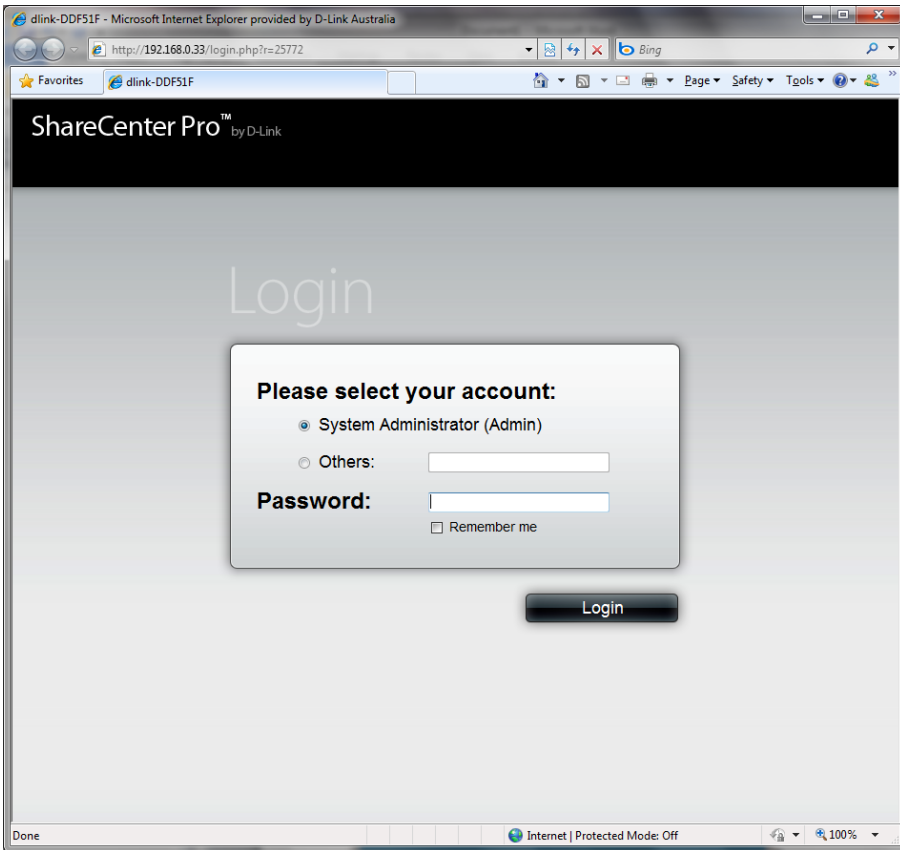
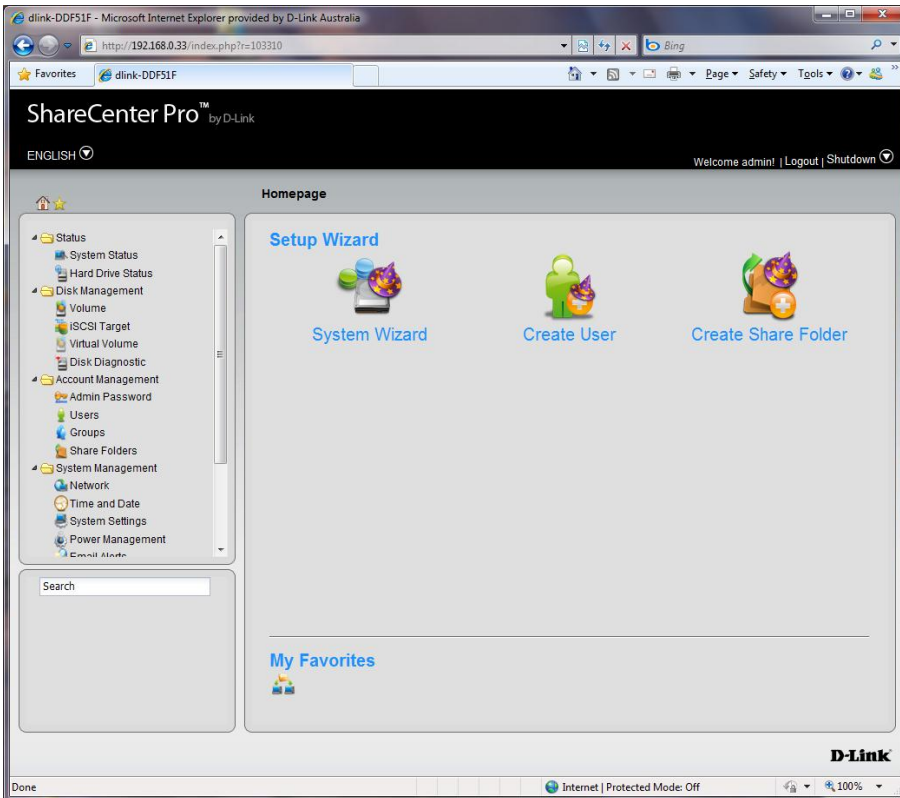
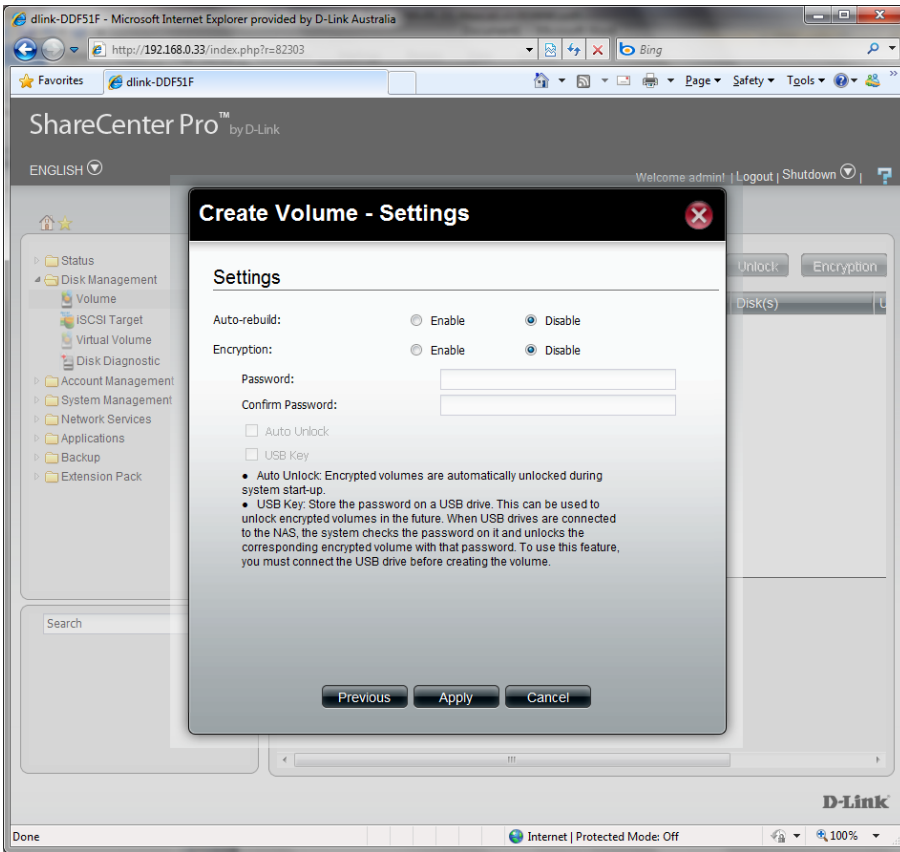


DNS-1200-5

Share Center Pro







dlink-DDF51F - Microsoft Internet Explorer provided by D-Link Australia
 http://192.168.0.33/index.php?r=103310

ShareCenter Pro™ by D-Link
 ENGLISH | Welcome admin! | Logout | Shutdown

Status >> System Status

- Power Management
- Email Alerts
- Firmware Upgrade
- Logs
- Network Services
 - File Sharing
 - Dynamic DNS
 - SNMP
 - Network Discovery Services
- Applications
 - Web File Manager
 - Download Manager
- Backup
 - Volume Snapshot
 - Local Backup
 - Remote Backup
 - External Backup
- Extension Pack
 - Extension Pack

Search

Basic Information

Model Name: ShareCenter Pro 1200
 Current Firmware Version: 1.00b21
 System Temperature: 36°C/96°F

LAN 1 Information

MAC Address: 5C:D9:98:DD:F5:1F
 IP Address: 192.168.0.33
 Subnet Mask: 255.255.255.0
 Gateway: 192.168.0.253

LAN 2 Information

MAC Address: 5C:D9:98:DD:F5:20
 IP Address: 192.168.1.32
 Subnet Mask: 255.255.255.0
 Gateway: 0.0.0.0

Network Settings

Host Name: dlink-DDF51F
 Primary DNS: 0.0.0.0
 Secondary DNS:
 Default Gateway: 192.168.0.253

Date and Time

Current Time: 14:13:03 01/21/2011
 Current Time Zone: (GMT+10:00) Canberra, Melbourne, Sydney
 Up Time: 0 day(s) 1 hour(s) 3 minute(s)

D-Link
 Internet | Protected Mode: Off | 100%

dlink-DDF51F - Microsoft Internet Explorer provided by D-Link Australia
 http://192.168.0.33/index.php?r=103310

ShareCenter Pro™ by D-Link
 ENGLISH | Welcome admin! | Logout | Shutdown

Status >> Hard Drive Status

- Status
- System Status
- Hard Drive Status
- Disk Management
- Account Management
- System Management
- Network Services
- Applications
- Backup
- Extension Pack

Search

Details

| Slot | Vendor | Model | Temperature (°C/°F) | Size |
|------|-----------------|-------------------|---------------------|-----------|
| 1 | Western Digital | WDC WD3200AAKS... | 39/102 | 298.09 GB |
| 2 | Western Digital | WDC WD3200AAKS... | 40/104 | 298.09 GB |
| 3 | Western Digital | WDC WD3200AAKS... | 40/104 | 298.09 GB |
| 4 | Western Digital | WDC WD3200AAKS... | 41/106 | 298.09 GB |
| 5 | - | - | - | - |

D-Link
 Internet | Protected Mode: Off | 100%

dlink-DDF51F - Microsoft Internet Explorer provided by D-Link Australia
 http://192.168.0.33/index.php?r=103310

ShareCenter S.M.A.R.T. Information

| Name | Now | Worst | Thresh | Value |
|-------------------------|-----|-------|--------|-------|
| Raw Read Error Rate | 200 | 200 | 41 | 0 |
| Spin Up Time | 171 | 171 | 17 | 4425 |
| Start Stop Count | 100 | 100 | 0 | 10 |
| Reallocated Sector Ct | 200 | 200 | 140 | 0 |
| Seek Error Rate | 200 | 200 | 41 | 0 |
| Power On Hours | 52 | 52 | 0 | 26501 |
| Spin Retry Count | 100 | 253 | 41 | 0 |
| Calibration Retry Count | 100 | 253 | 41 | 0 |
| Power Cycle Count | 100 | 100 | 0 | 10 |
| Power-Off Retract Count | 200 | 200 | 0 | 9 |
| Load Cycle Count | 200 | 200 | 0 | 10 |
| Temperature Celsius | 107 | 94 | 0 | 40 |
| Reallocated Event Count | 200 | 200 | 0 | 0 |
| Current Pending Sector | 200 | 200 | 0 | 0 |
| Offline Uncorrectable | 200 | 200 | 0 | 0 |
| UDMA CRC Error Count | 200 | 200 | 0 | 0 |
| Multi Zone Error Rate | 200 | 200 | 41 | 0 |

Close

D-Link

dlink-DDF51F - Microsoft Internet Explorer provided by D-Link Australia
 http://192.168.0.33/index.php?r=103310

ShareCenter Pro™ by D-Link

Welcome admin | Logout | Shutdown

Disk Management >> Volume

Create Delete Extend/Spare Migrate Expand Unlock Encryption Auto Rebuild

| Volume | Level | State | Encryption | Disk(s) | Used Size / Total Size |
|----------|--------|--------|------------|---------|------------------------|
| Volume_1 | RAID 0 | Normal | Disabled | 1, 2 | 197.51 MB / 584.8 GB |

D-Link

dlink-DDF51F - Microsoft Internet Explorer provided by D-Link Australia
 http://192.168.0.33/index.php?r=103310

ShareCenter Pro™ by D-Link

Welcome admin | Logout | Shutdown

Disk Management >> iSCSI Target

iSCSI Manager iSCSI Targets

iSCSI Manager

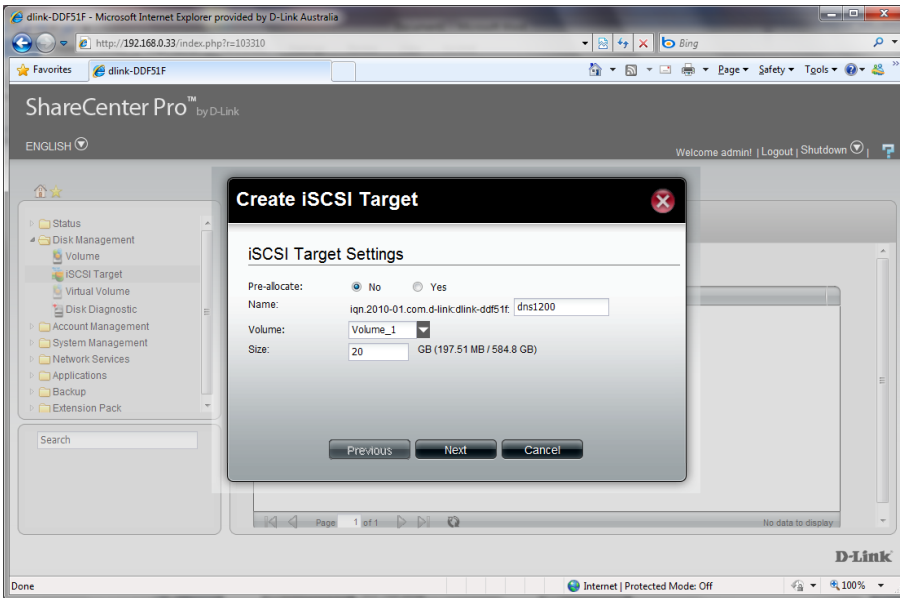
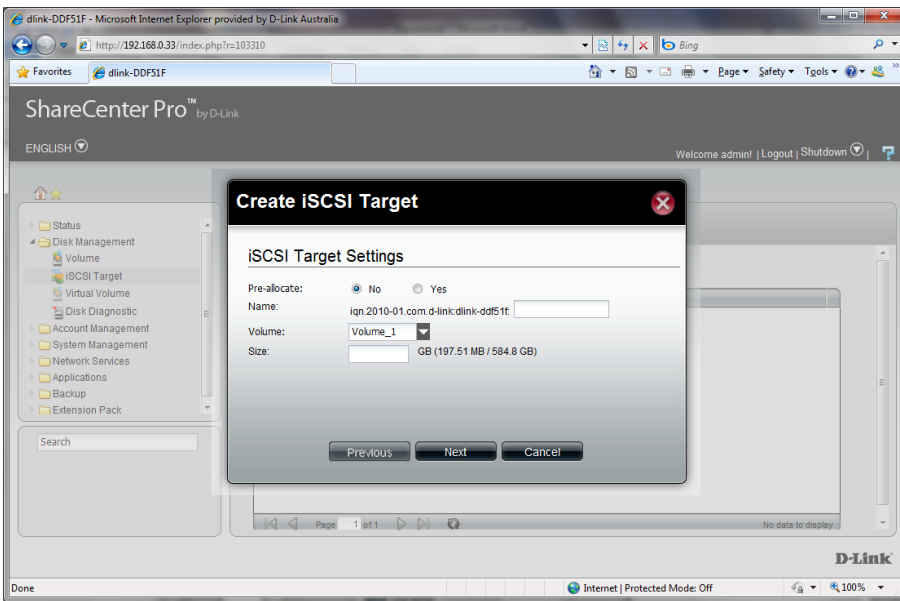
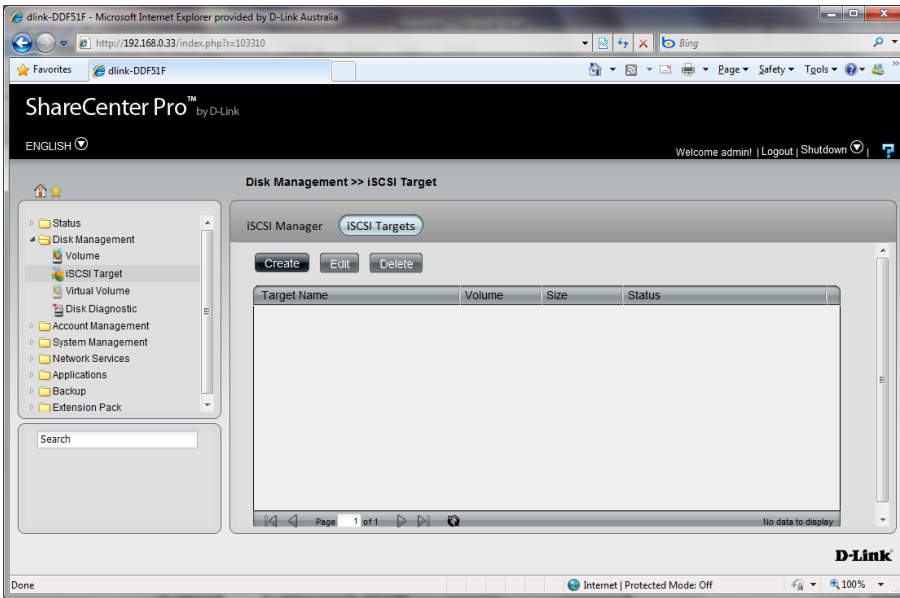
Enable iSCSI Target

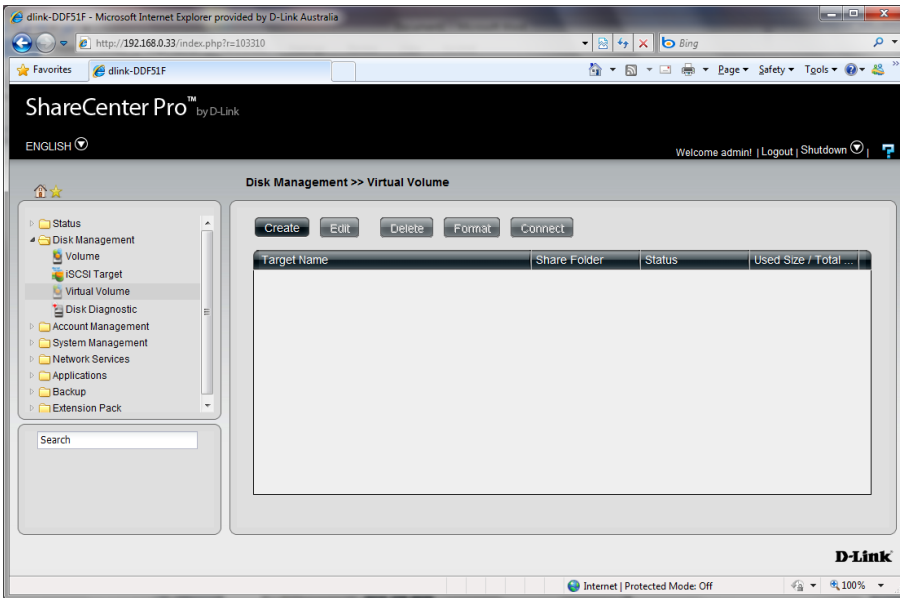
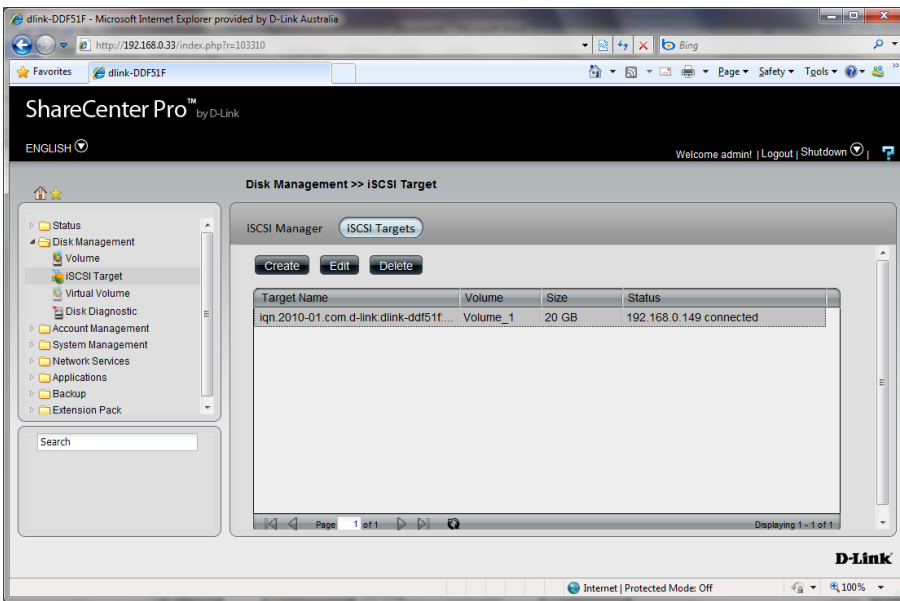
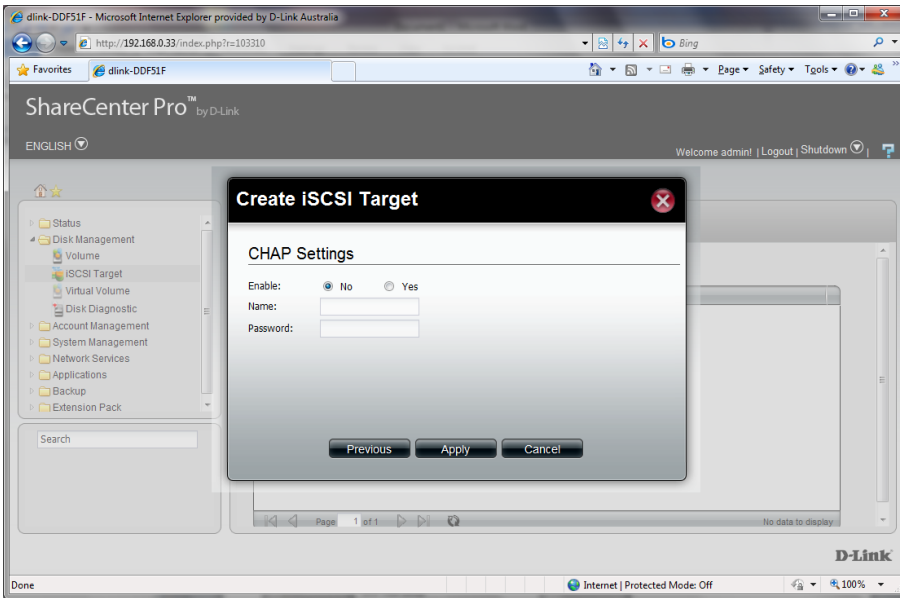
Enable iSNS

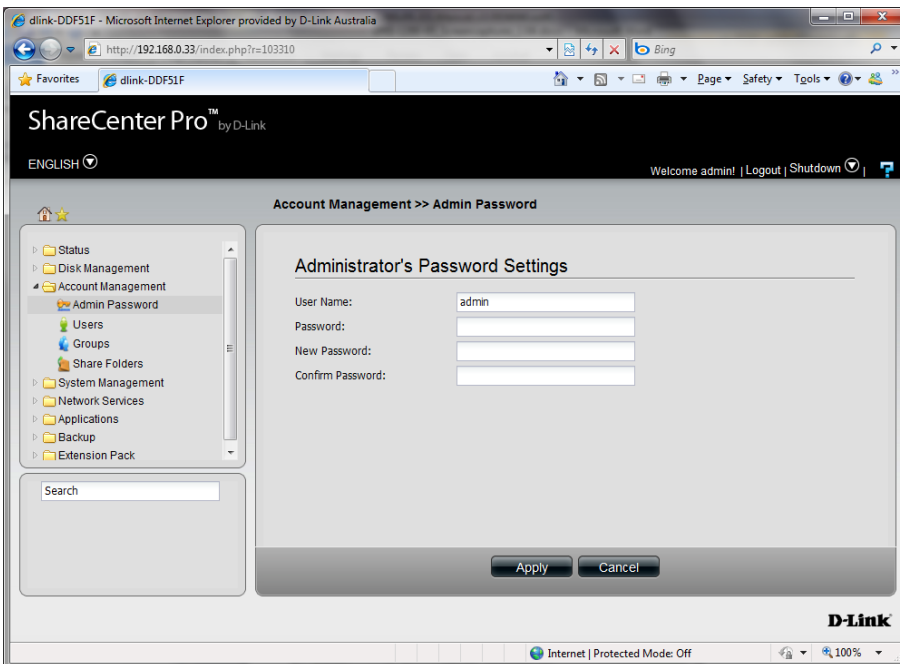
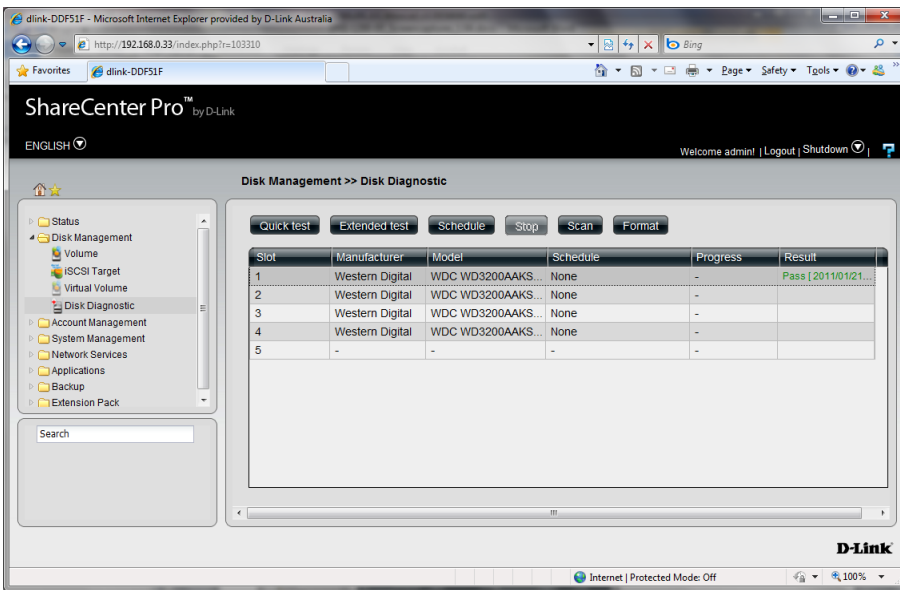
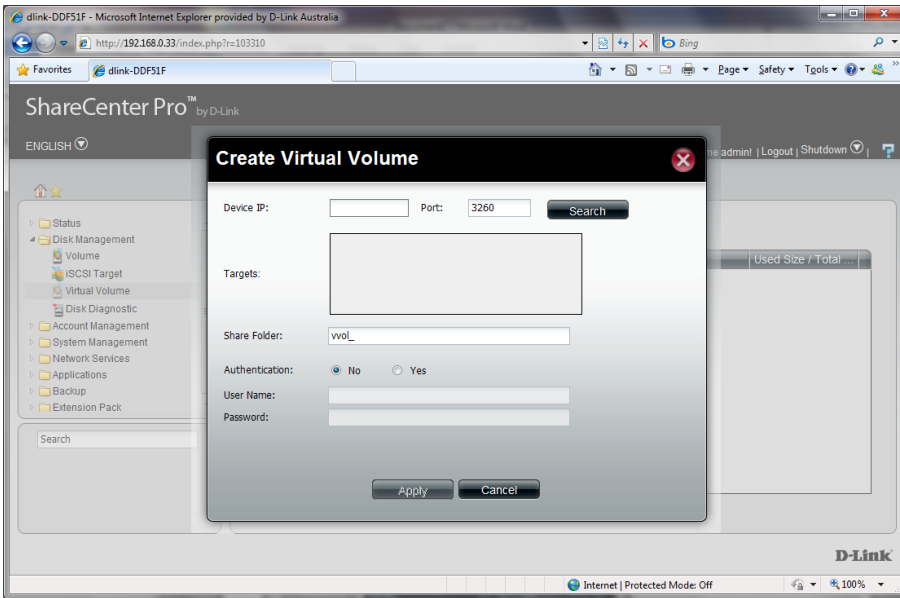
iSNS Server IP:

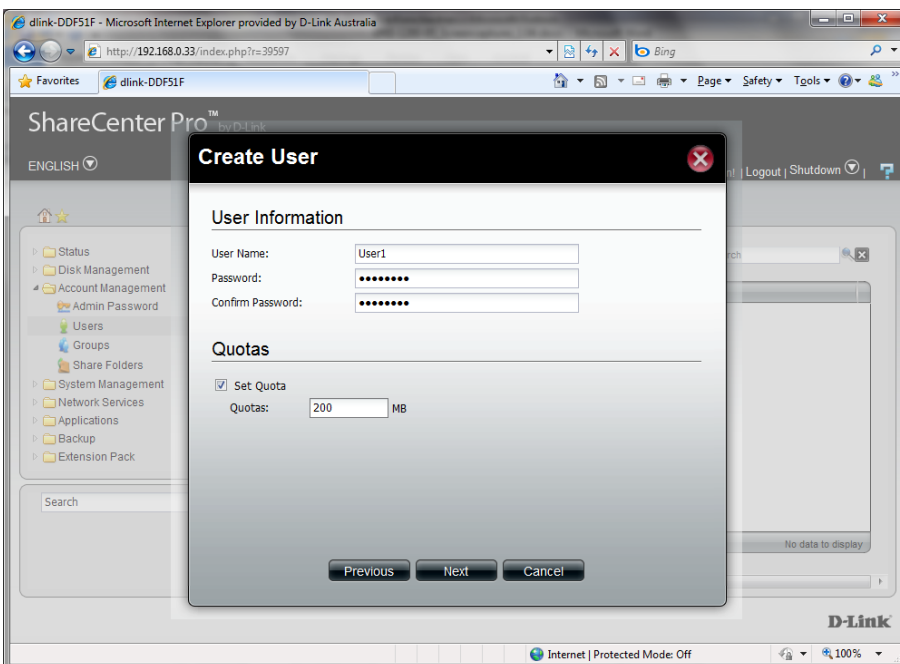
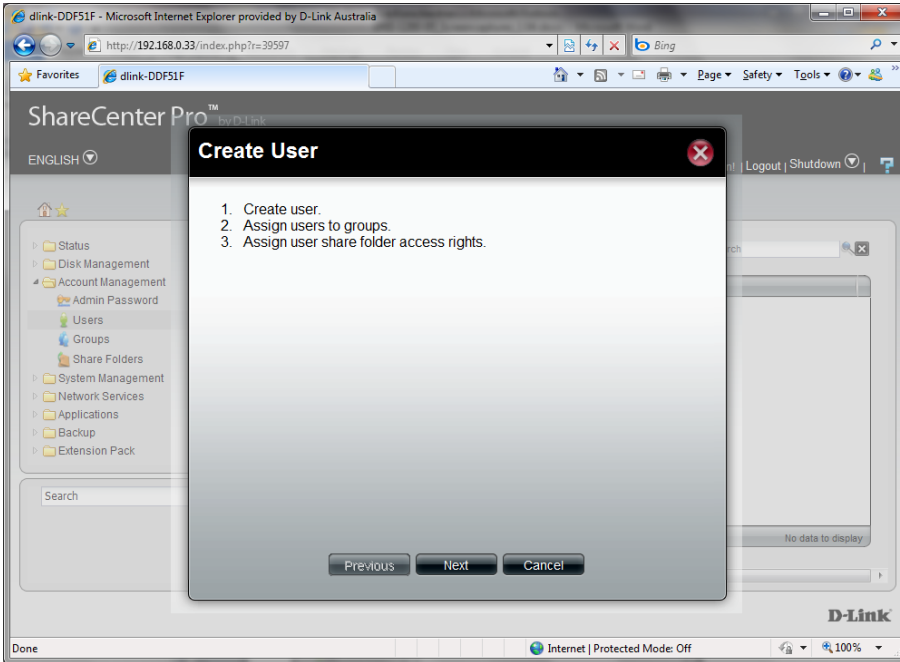
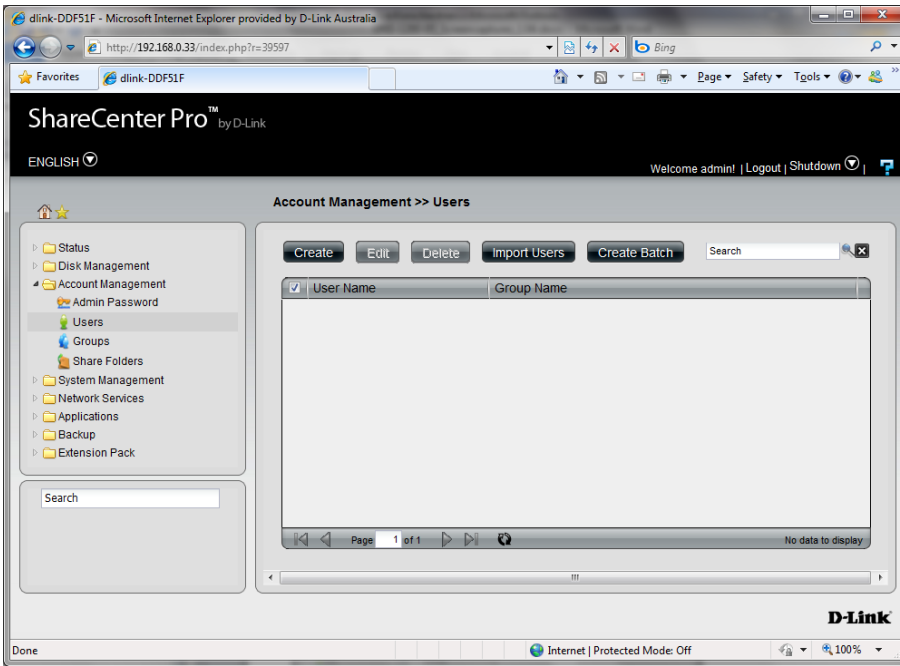
Apply Cancel

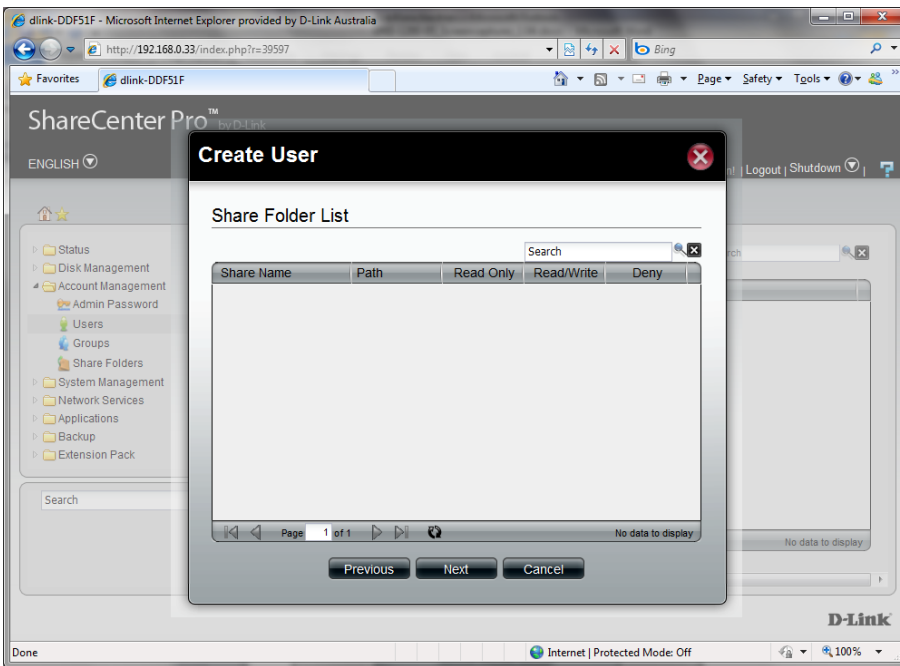
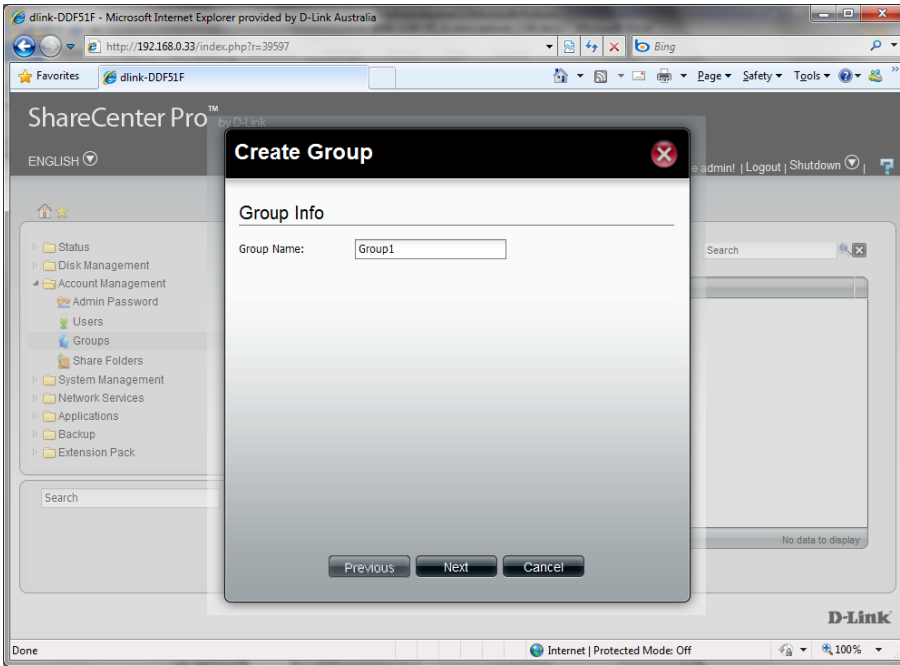
D-Link

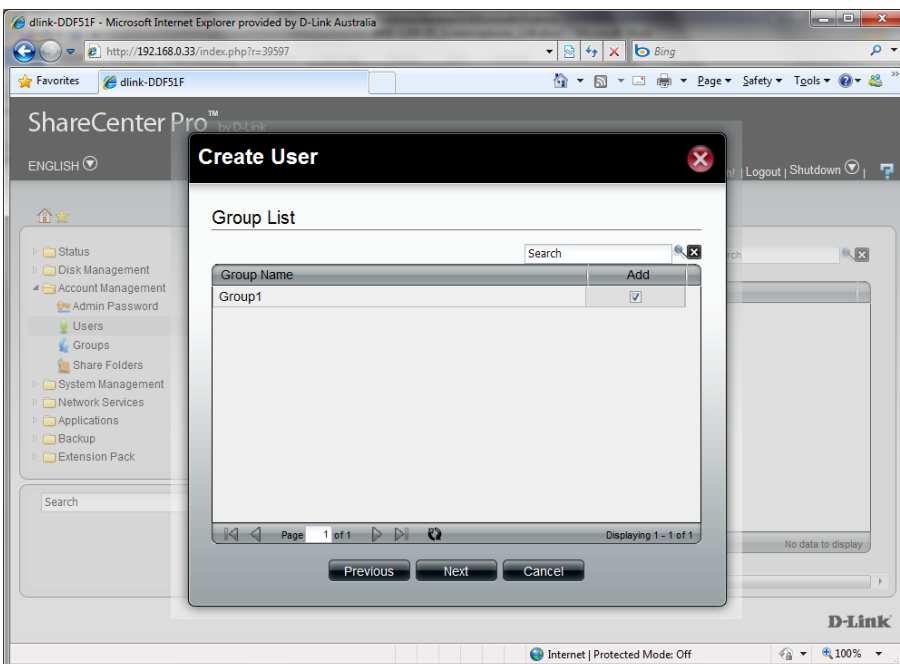
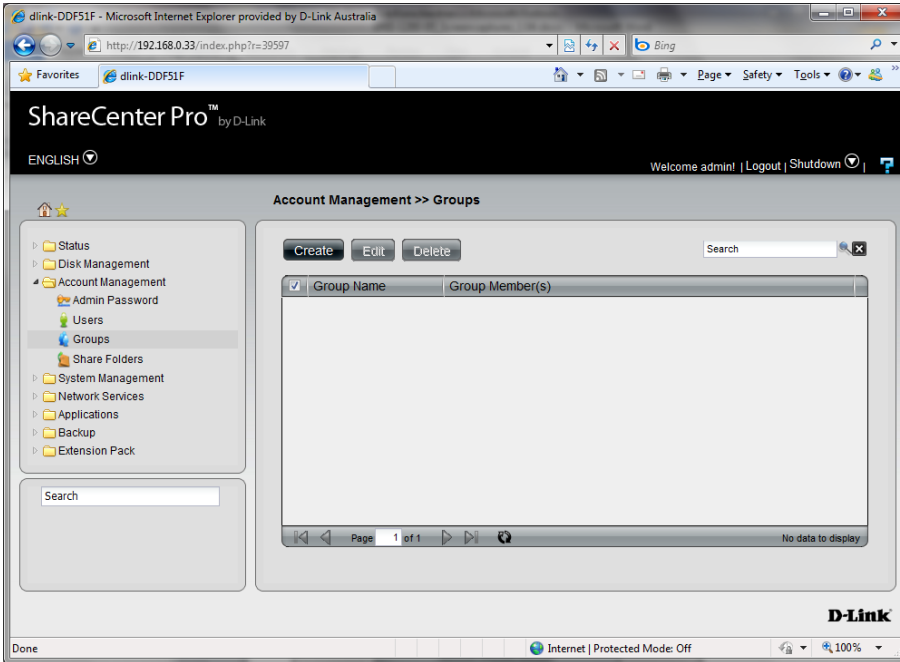
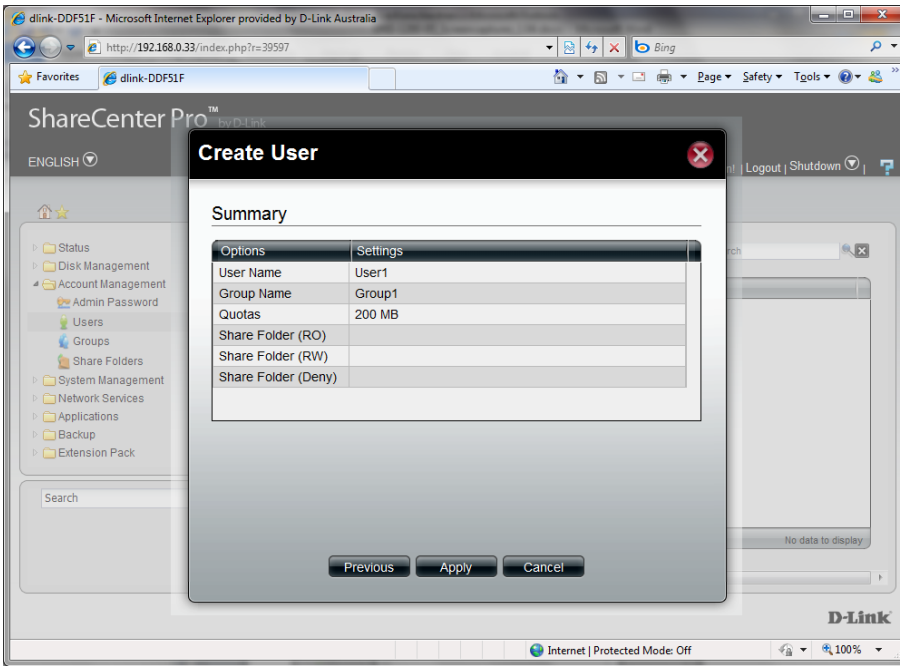


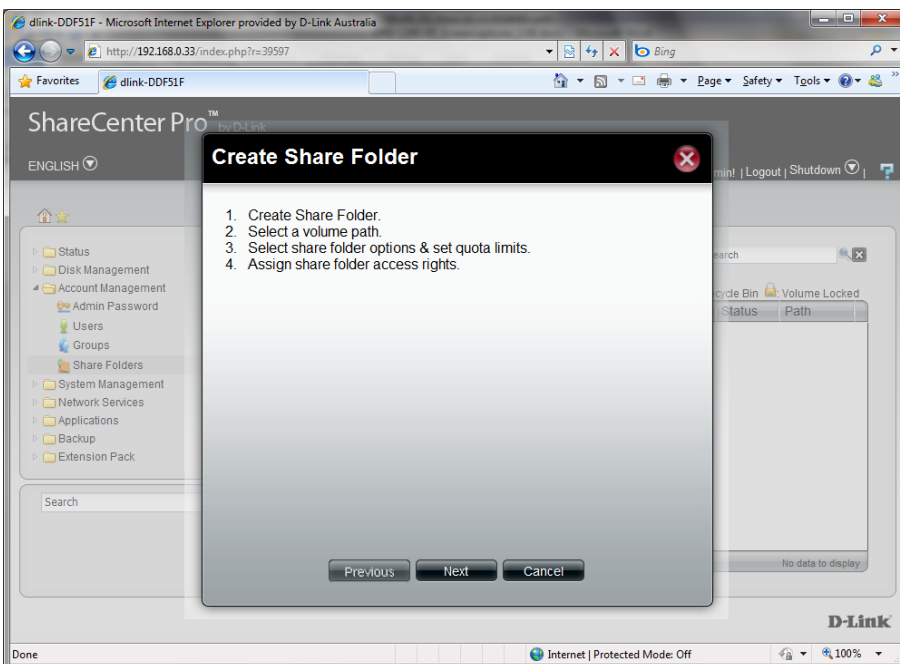
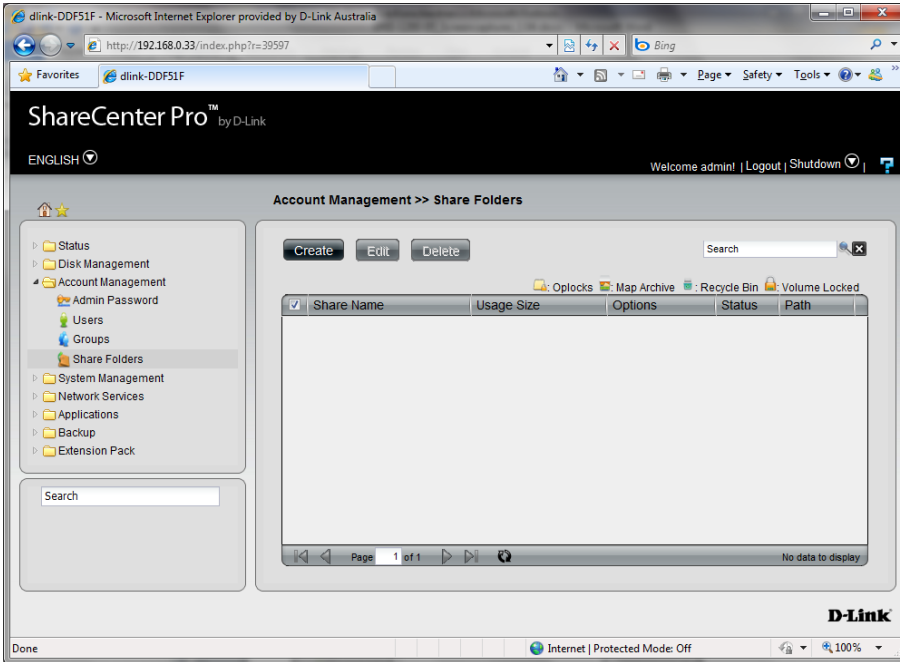
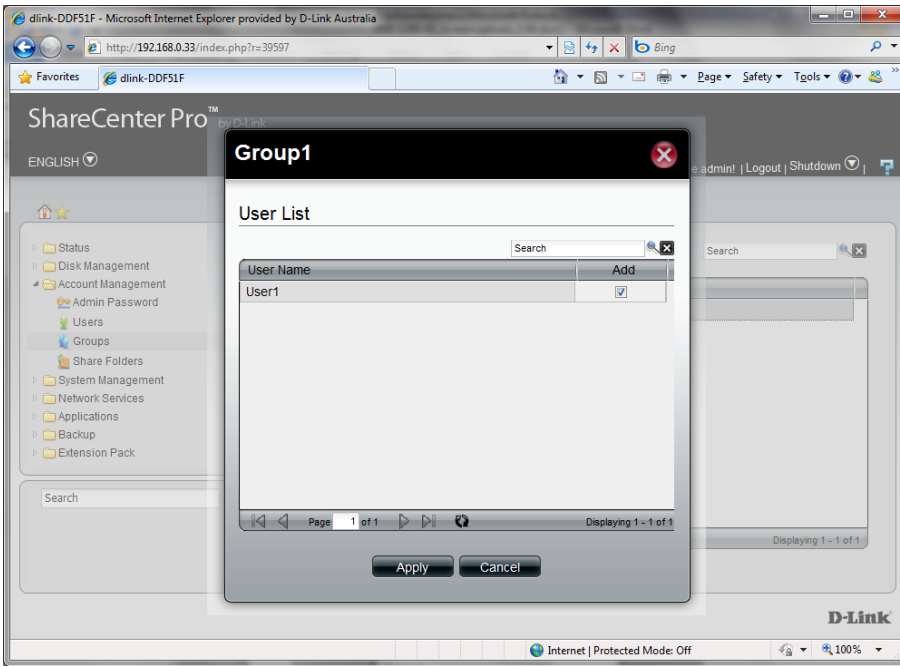


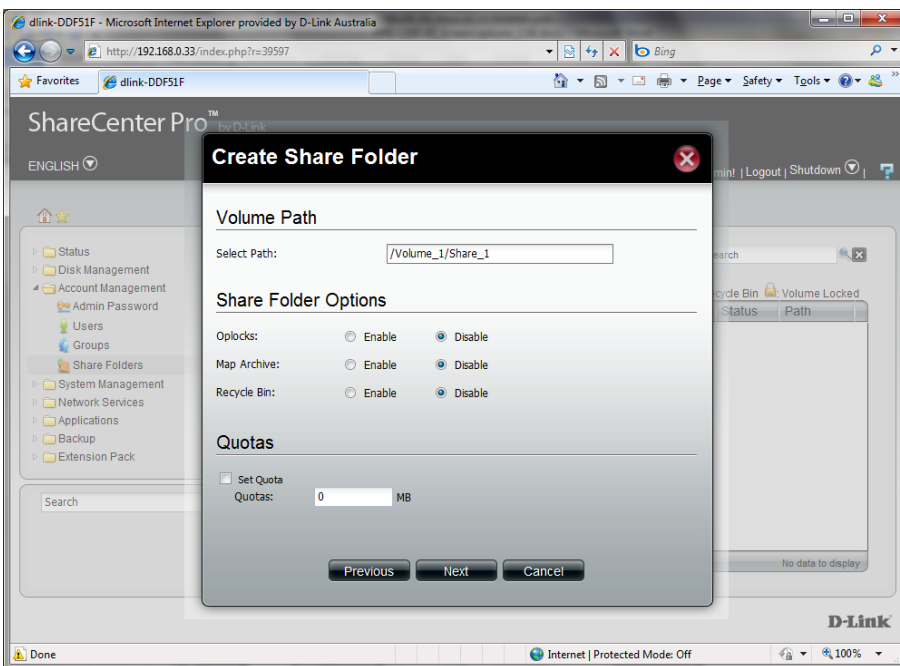
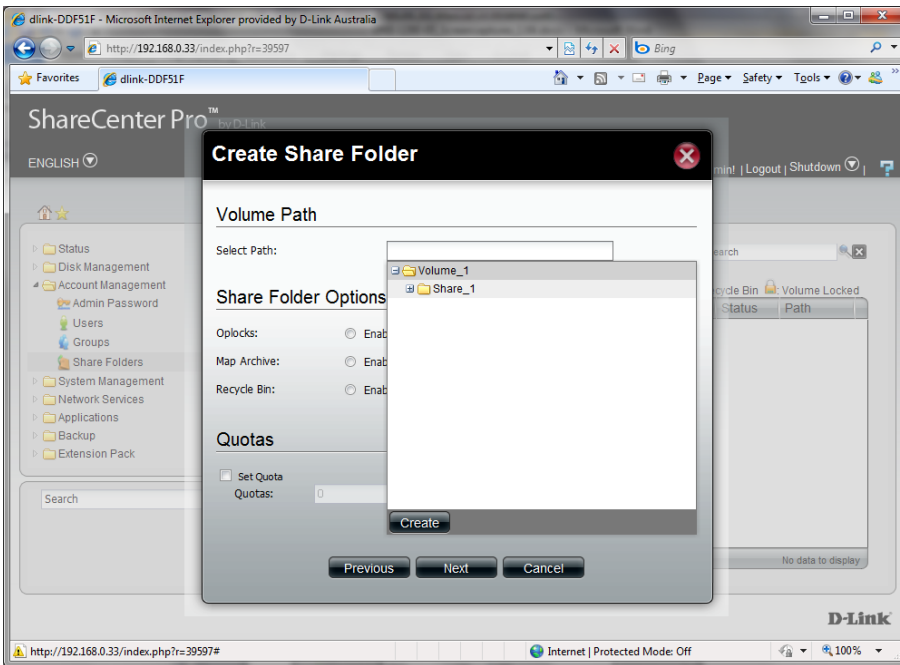
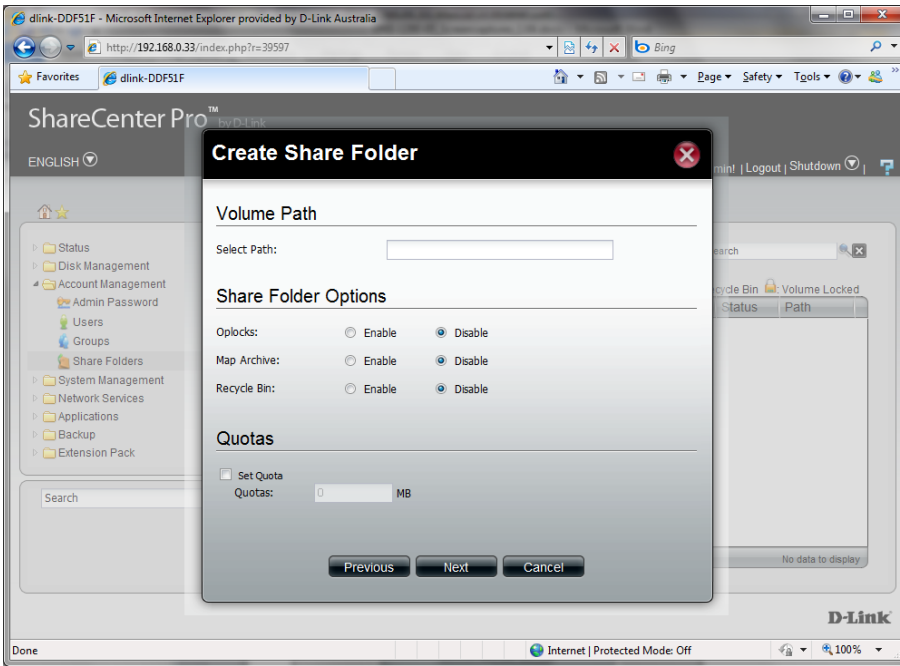


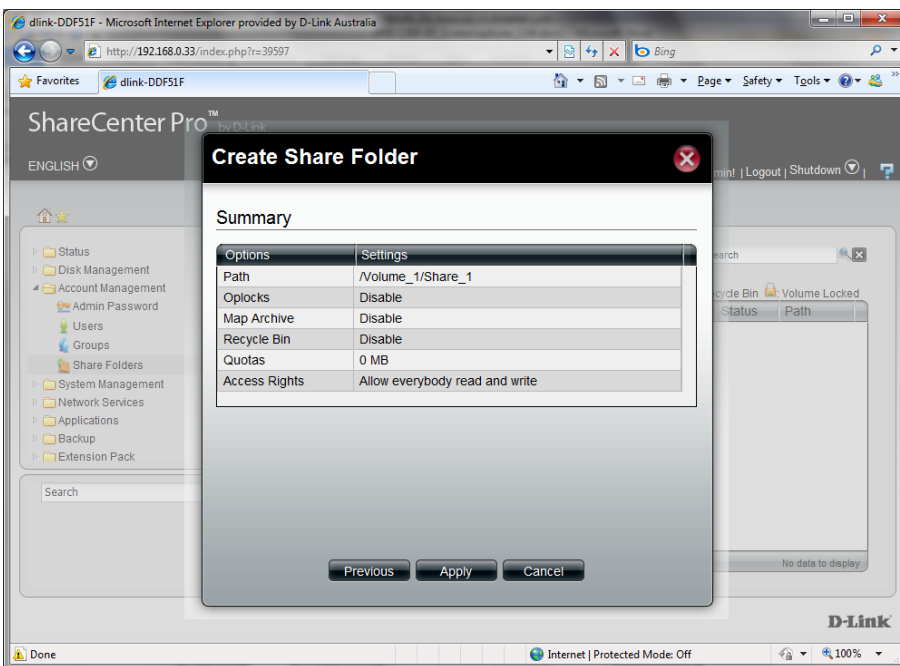
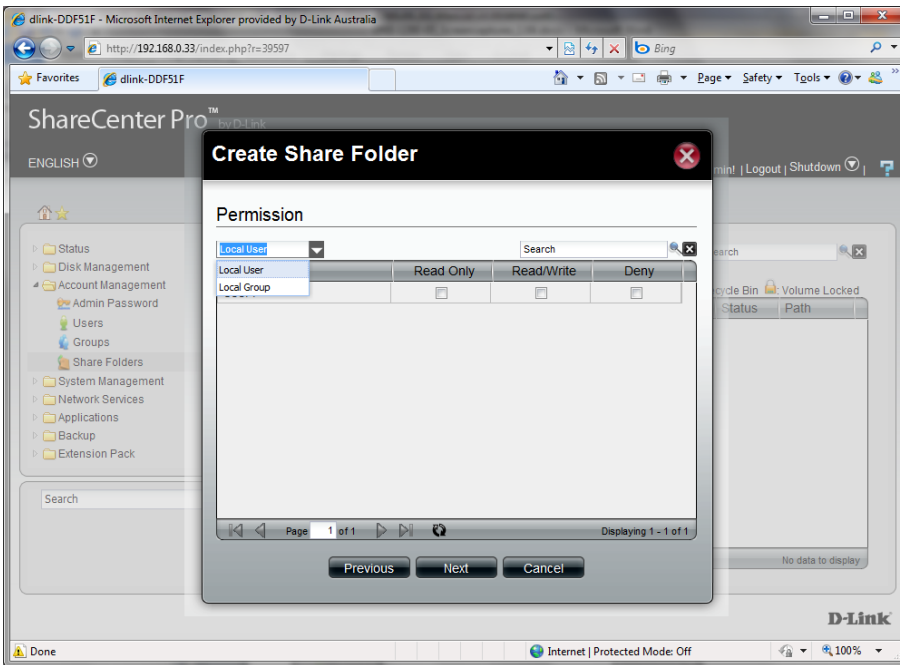
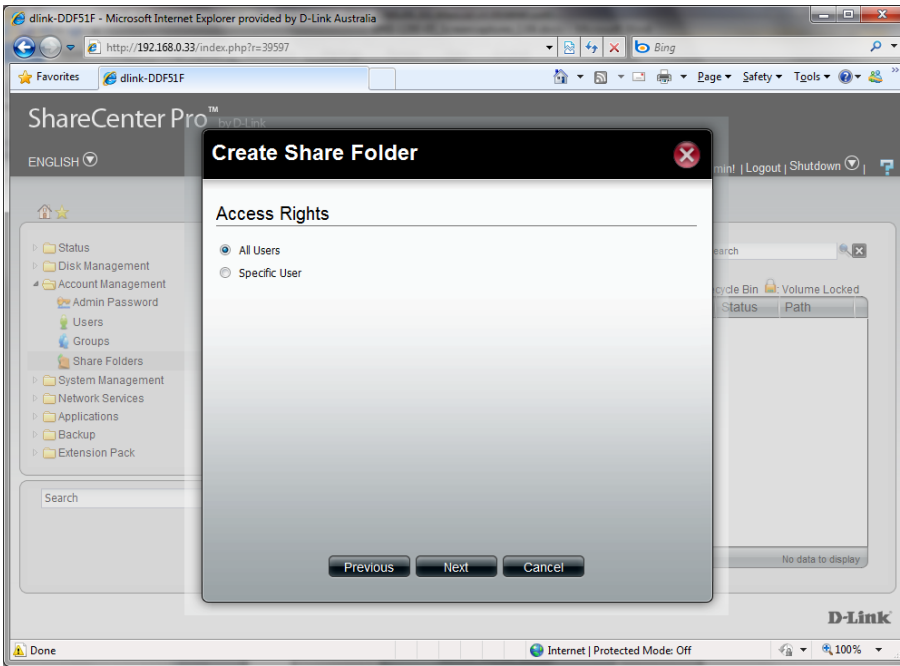


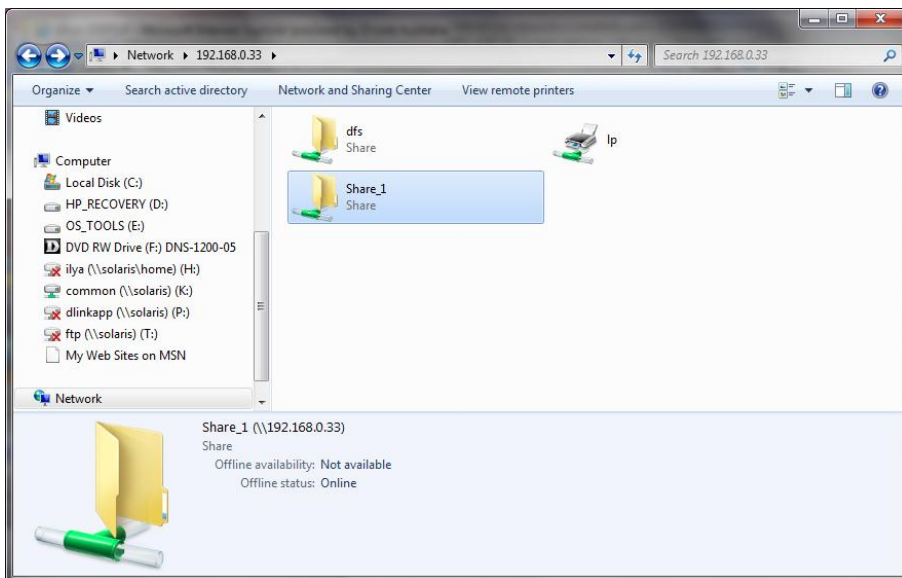
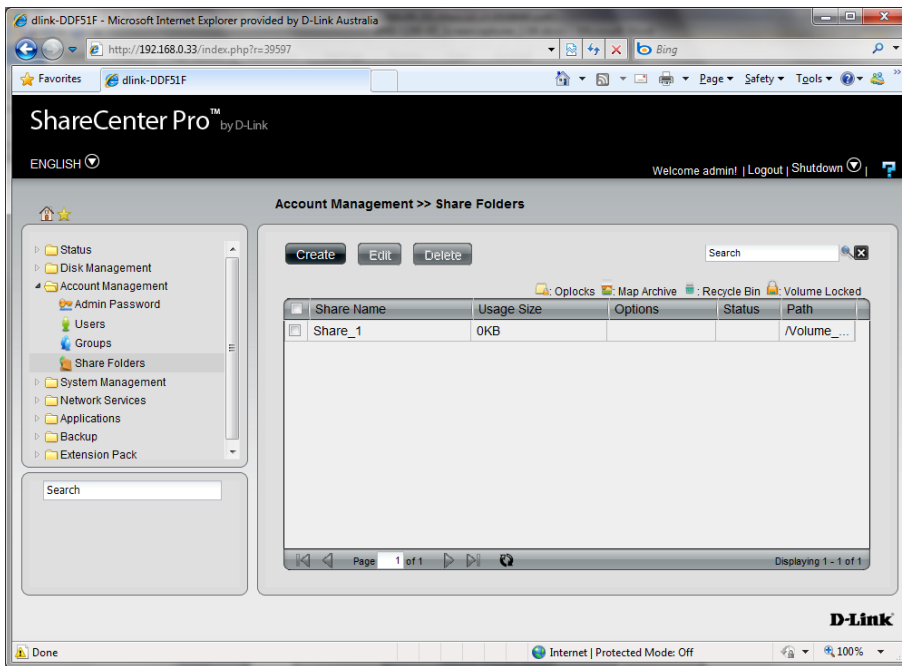


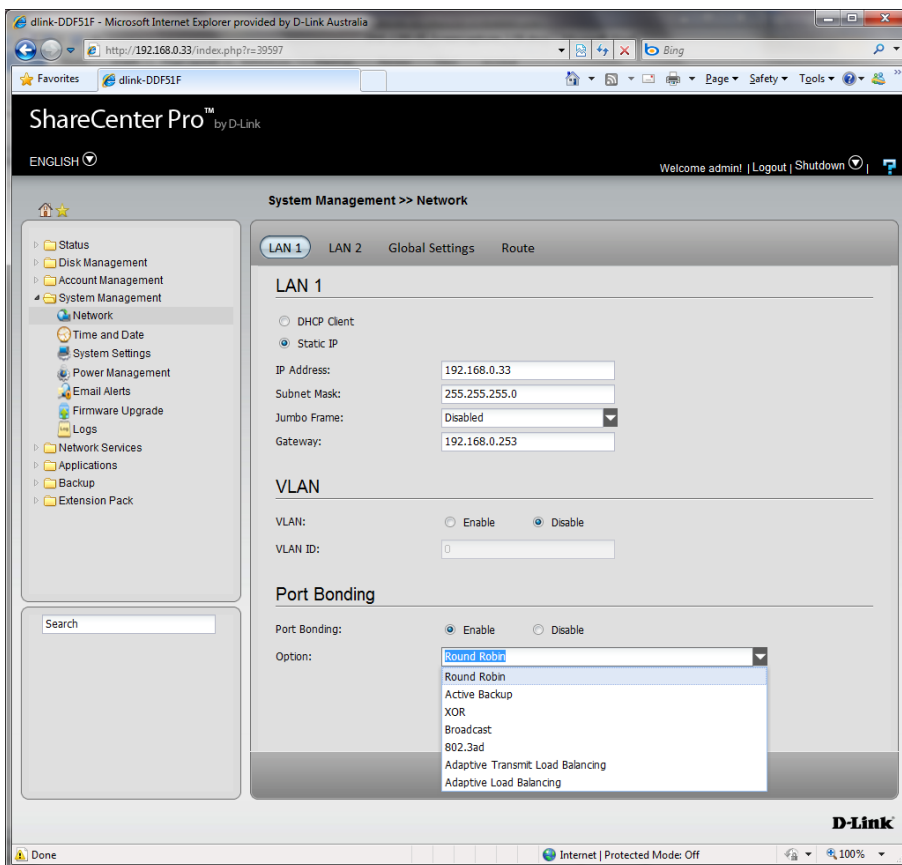
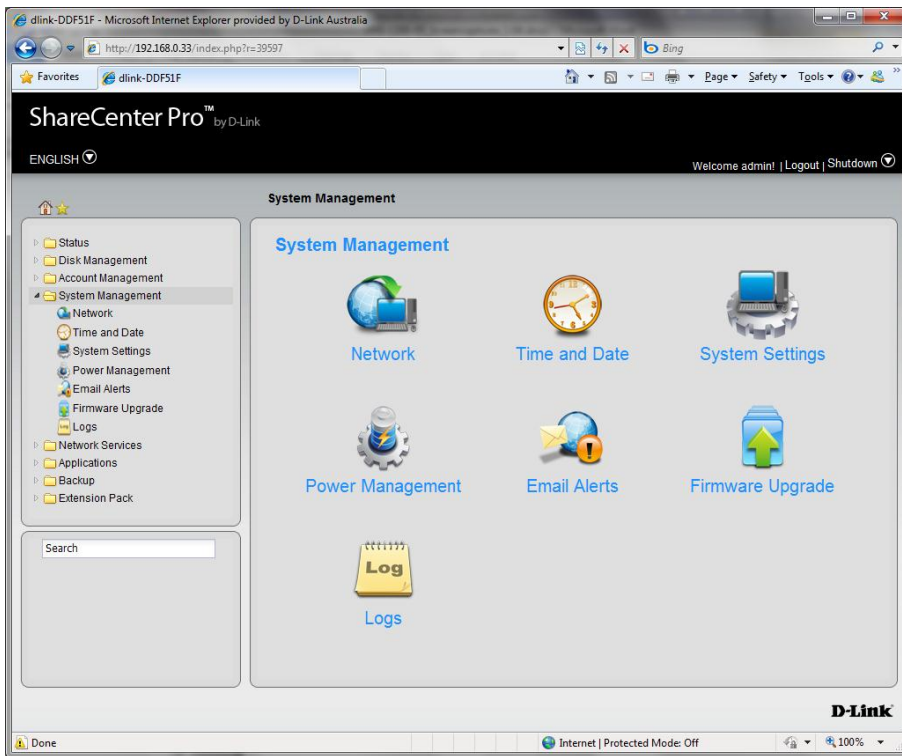












dlink-DDF51F - Microsoft Internet Explorer provided by D-Link Australia
 http://192.168.0.33/index.php?r=39597

ShareCenter Pro™ by D-Link
 ENGLISH>Welcome admin! | Logout | Shutdown

System Management >> Network

LAN 1 LAN 2 **Global Settings** Route

Host Name
 Host Name: DNS1200-DDF51F

DNS Server
 Primary DNS: 0.0.0.0
 Invalid IP address. Please check IP address and try again.
 Secondary DNS:

Default Gateway
 Gateway: LAN 1

Apply Cancel

D-Link

Done Internet | Protected Mode: Off 100%

dlink-DDF51F - Microsoft Internet Explorer provided by D-Link Australia
 http://192.168.0.33/index.php?r=39597

ShareCenter Pro™ by D-Link
 ENGLISH>Welcome admin! | Logout | Shutdown

System Management >> Network

LAN 1 LAN 2 Global Settings **Route**

Create Edit Delete

| IP Address | Subnet Mask | Gateway | Metric | Interface |
|-------------|---------------|---------------|--------|-----------|
| 192.168.0.0 | 255.255.255.0 | 0.0.0.0 | 0 | LAN 1 |
| 224.0.0.0 | 255.0.0.0 | 0.0.0.0 | 0 | LAN 1 |
| default | 0.0.0.0 | 192.168.0.253 | 0 | LAN 1 |

Page 1 of 1 Displaying 1 - 3 of 3

D-Link

Done Internet | Protected Mode: Off 100%

dlink-DDF51F - Microsoft Internet Explorer provided by D-Link Australia
http://192.168.0.33/index.php?r=39597

ShareCenter Pro™ by D-Link
ENGLISH | Welcome admin! | Logout | Shutdown

System Management >> Time and Date

Date and Time
Current Time: 14:59:51, 01/21/2011

Time Zone Settings
Time Zone: (GMT+10:00) Canberra, Melbourne, Sydney

Synchronize Time Settings
 Set from Computer
 Set Manually
2011-01-21 0:00:00
 Set from NTP Server
Select NTP Server

Apply Cancel

D-Link

Done Internet | Protected Mode: Off 100%

dlink-DDF51F - Microsoft Internet Explorer provided by D-Link Australia
http://192.168.0.33/index.php?r=39597

ShareCenter Pro™ by D-Link
ENGLISH | Welcome admin! | Logout | Shutdown

System Management >> System Settings

Configuration Settings
Save Configuration: Save
Load Configuration: Browse... Load
Default Configuration: Restore

Idle Time Settings
Web Timeout: 10 (Minutes)

System Overheat Settings
System Overheat Temperature: Celsius 49 °C

Apply Cancel

D-Link

Done Internet | Protected Mode: Off 100%

dlink-DDF51F - Microsoft Internet Explorer provided by D-Link Australia
 http://192.168.0.33/index.php?r=39597

ShareCenter Pro™ by D-Link

ENGLISH | Welcome admin! | Logout | Shutdown

System Management >> Power Management

Power Saving Settings | Schedule Power On/Off Settings

Hard Drive Hibernation Settings

Hard Drive Hibernation: Enable Disable

Turn Off Hard Drive: After 5 Mins

OLED Display Settings

OLED Display: Sleep After 10 Secs

Auto Power Recovery Settings

Auto Power Recovery: Enable Disable

Fan Control

Type: Auto (Off/Low/High)

Auto (Off/Low/High)
 Auto (Low/High)
 Manual (Always on High)

Apply Cancel

D-Link

Internet | Protected Mode: Off | 100%

dlink-DDF51F - Microsoft Internet Explorer provided by D-Link Australia
 http://192.168.0.33/index.php?r=39597

ShareCenter Pro™ by D-Link

ENGLISH | Welcome admin! | Logout | Shutdown

System Management >> Power Management

Power Saving Settings | Schedule Power On/Off Settings

Schedule Power On/Off

Schedule Power On/Off: Enable Disable

Schedule On / Schedule Off

| | Schedule On | | Schedule Off | |
|------|-------------|----|--------------|----|
| | □ | ▣ | □ | ▣ |
| SUN: | 0 | 00 | 0 | 00 |
| MON: | 0 | 00 | 0 | 00 |
| TUE: | 0 | 00 | 0 | 00 |
| WED: | 0 | 00 | 0 | 00 |
| THU: | 0 | 00 | 0 | 00 |
| FRI: | 0 | 00 | 0 | 00 |
| SAT: | 0 | 00 | 0 | 00 |

Apply Cancel

D-Link

Internet | Protected Mode: Off | 100%

dlink-DDF51F - Microsoft Internet Explorer provided by D-Link Australia
http://192.168.0.33/index.php?r=39597

ShareCenter Pro™ by D-Link
ENGLISH>Welcome admin! | Logout | Shutdown

System Management >> Email Alerts

E-Mail Settings

Email Alert: Enable Disable

Login Method: Anonymous

User Name: Anonymous

Password: Login

Encryption: SSL/TLS Disable

SMTP Server:

Port Number: 25

Sender E-mail:

Receiver E-mail:

Test E-Mail:

Event Alert Settings

- Administrator's Password Has Been Changed
- Firmware Has Been Upgraded
- Network Settings Have Been Changed
- System Temperature Has Been Exceeded
- S.M.A.R.T Test Has Finished
- System Has Rebooted From A Power Failure

D-Link

dlink-DDF51F - Microsoft Internet Explorer provided by D-Link Australia
http://192.168.0.33/index.php?r=39597

ShareCenter Pro™ by D-Link
ENGLISH>Welcome admin! | Logout | Shutdown

System Management >> Email Alerts

User Name:

Password:

Encryption: SSL/TLS Disable

SMTP Server:

Port Number: 25

Sender E-mail:

Receiver E-mail:

Test E-Mail:

Event Alert Settings

- Administrator's Password Has Been Changed
- Firmware Has Been Upgraded
- Network Settings Have Been Changed
- System Temperature Has Been Exceeded
- S.M.A.R.T Test Has Finished
- System Has Rebooted From A Power Failure
- Volume/Disk Status Has Been Changed
- Space Status Interval: 00 (Hours) 01 (Minutes)
- One of The Volumes Is Full
- Send Log File Daily Time: 00 00

D-Link

dlink-DDF51F - Microsoft Internet Explorer provided by D-Link Australia
http://192.168.0.33/index.php?r=39597

ShareCenter Pro™ by D-Link

ENGLISH | Welcome admin! | Logout | Shutdown

System Management >> Firmware Upgrade

Firmware Settings

Current Firmware Version: 1.00b21
Firmware Date: 2010.12.22.1209
File Path:

D-Link

Done | Internet | Protected Mode: Off | 100%

dlink-DDF51F - Microsoft Internet Explorer provided by D-Link Australia
http://192.168.0.33/index.php?r=39597

ShareCenter Pro™ by D-Link

ENGLISH | Welcome admin! | Logout | Shutdown

System Management >> Logs

Log Settings | Log Message List

Log Settings

| | | |
|-------------|---|-------------------------------|
| System Log: | <input checked="" type="radio"/> Enable | <input type="radio"/> Disable |
| NFS: | <input checked="" type="radio"/> Enable | <input type="radio"/> Disable |
| CIFS: | <input checked="" type="radio"/> Enable | <input type="radio"/> Disable |
| FTP: | <input checked="" type="radio"/> Enable | <input type="radio"/> Disable |
| Event: | <input checked="" type="radio"/> Enable | <input type="radio"/> Disable |

D-Link

Done | Internet | Protected Mode: Off | 100%

dlink-DDF51F - Microsoft Internet Explorer provided by D-Link Australia

http://192.168.0.33/index.php?r=39597

ShareCenter Pro™ by D-Link

ENGLISH>Welcome admin! | Logout | Shutdown

System Management >> Logs

Log Settings **Log Message List**

Refresh Log Clear Log Save Log

| | Severity | Date Time | Log message |
|----|----------|----------------------|----------------------|
| 1 | 5 | 2011 Jan 04 01:26:54 | Stop service : FTP |
| 2 | 5 | 2011 Jan 04 01:26:52 | Stop service : CIFS |
| 3 | 5 | 2011 Jan 04 01:26:49 | Factory Reset |
| 4 | 5 | 2011 Jan 04 01:22:58 | Start service : DFS |
| 5 | 5 | 2011 Jan 04 01:22:58 | Start service : NFS |
| 6 | 5 | 2011 Jan 04 01:22:58 | Start service : FTP |
| 7 | 5 | 2011 Jan 04 01:22:56 | Start service : CIFS |
| 8 | 6 | 2011 Jan 04 01:22:43 | Power On |
| 9 | 5 | 2011 Jan 04 01:07:34 | Stop service : CIFS |
| 10 | 6 | 2011 Jan 04 01:07:30 | Shutdown |

Page 7 of 11 | Displaying 81 - 70 of 110

D-Link

Internet | Protected Mode: Off | 100%


dlink-DDF51F - Microsoft Internet Explorer provided by D-Link Australia

http://192.168.0.33/index.php?r=39597


ShareCenter Pro™ by D-Link

ENGLISH>Welcome admin! | Logout | Shutdown


Network Services




File Sharing



Dynamic DNS



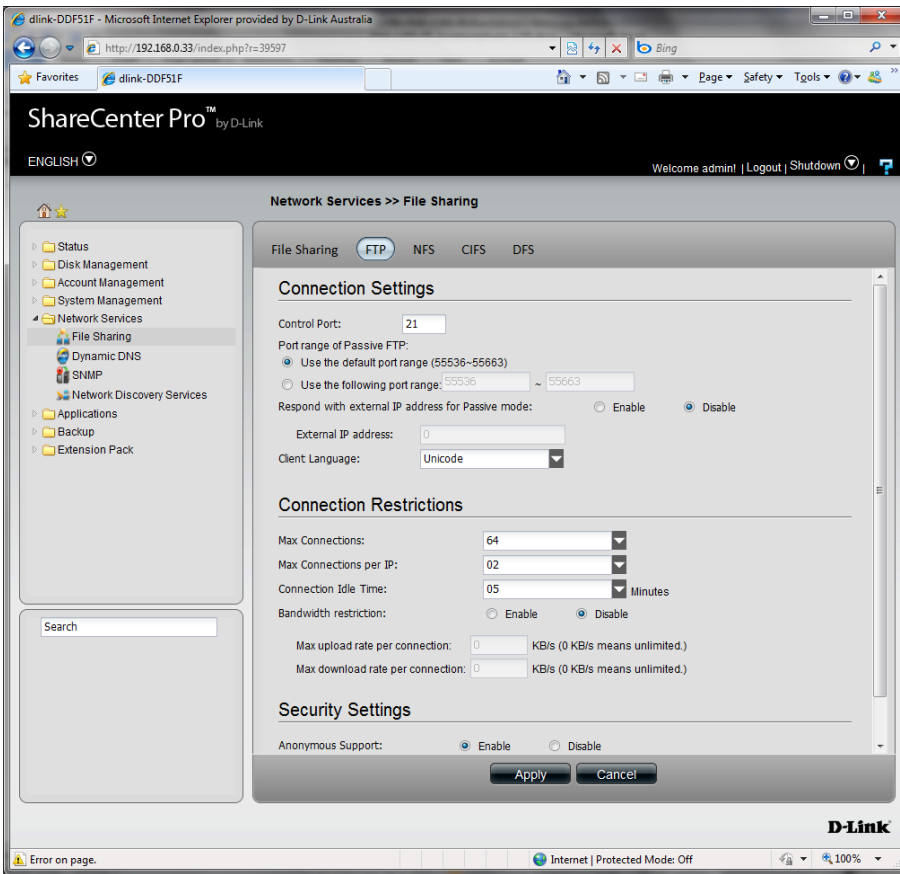
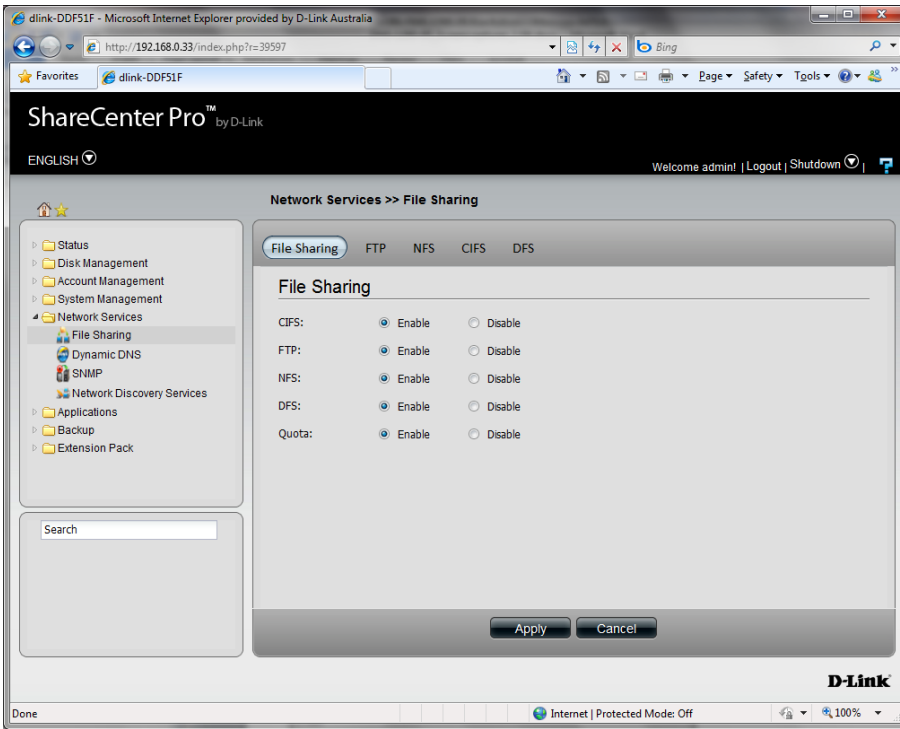
SNMP



Network Discovery Services

D-Link

Internet | Protected Mode: Off | 100%



dlink-DDF51F - Microsoft Internet Explorer provided by D-Link Australia
 http://192.168.0.33/index.php?r=39597

ShareCenter Pro™ by D-Link
 ENGLISH | Welcome admin! | Logout | Shutdown

Network Services >> File Sharing

File Sharing **FTP** NFS CIFS DFS

Control Port: 21

Port range of Passive FTP:
 Use the default port range (55536-55663)
 Use the following port range: 55536 ~ 55663

Respond with external IP address for Passive mode: Enable Disable

External IP address:

Client Language: Unicode

Connection Restrictions

Max Connections: 64
 Max Connections per IP: 02
 Connection Idle Time: 05 Minutes
 Bandwidth restriction: Enable Disable

Max upload rate per connection: 0 KB/s (0 KB/s means unlimited.)
 Max download rate per connection: 0 KB/s (0 KB/s means unlimited.)

Security Settings

Anonymous Support: Enable Disable
 SSL/TLS Connection Only: Enable Disable

Apply Cancel

D-Link

dlink-DDF51F - Microsoft Internet Explorer provided by D-Link Australia
 http://192.168.0.33/index.php?r=39597

ShareCenter Pro™ by D-Link
 ENGLISH | Welcome admin! | Logout | Shutdown

Network Services >> File Sharing

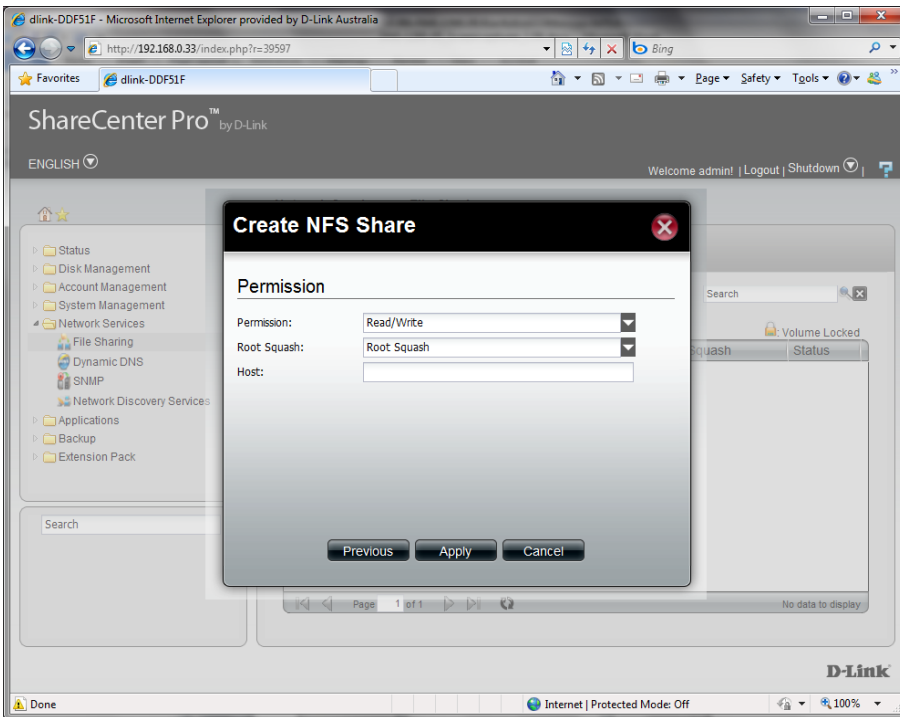
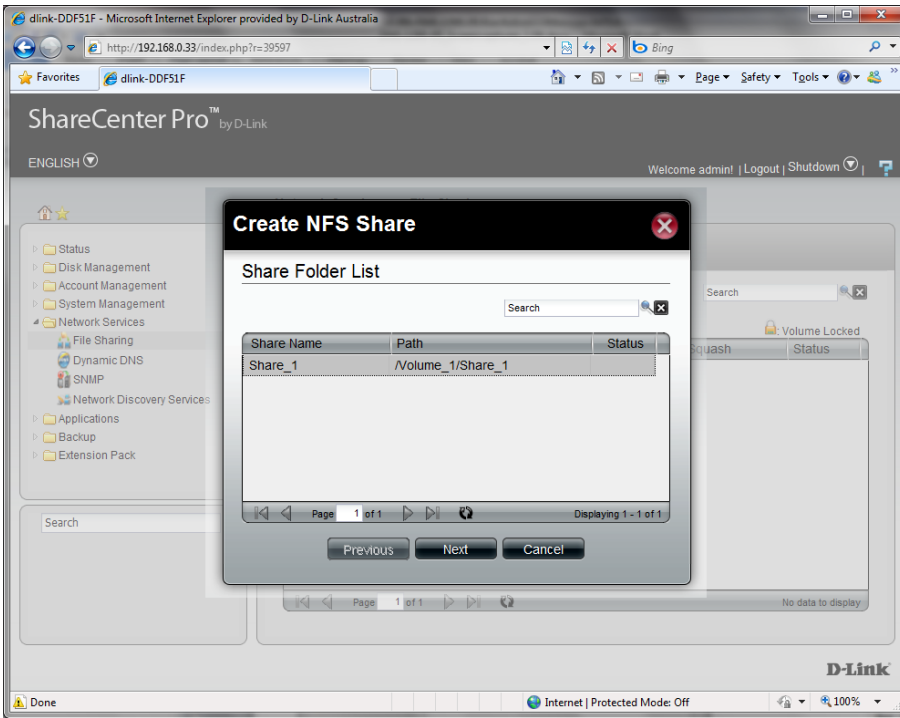
File Sharing FTP **NFS** CIFS DFS

Create Edit Delete Search

| Mou... | Host | Permission | Root Squash | Status |
|--------------------|------|------------|-------------|--------|
| No data to display | | | | |

Page 1 of 1

D-Link



dlink-DDFS1F - Microsoft Internet Explorer provided by D-Link Australia
 http://192.168.0.33/index.php?r=39597

ShareCenter Pro™ by D-Link

ENGLISH>Welcome admin! | Logout | Shutdown

Network Services >> File Sharing

File Sharing FTP NFS CIFS DFS

Description

Description: ShareCenter Pro 1200

Workgroup Type

Workgroup
 Workgroup: WORKGROUP

Active Directory
 User Name:
 Password:
 DNS: 61.88.88.88
 Workgroup:
 Realm Name:
 AD Server Name:

Apply Cancel

D-Link

Done Internet | Protected Mode: Off 100%

dlink-DDFS1F - Microsoft Internet Explorer provided by D-Link Australia
 http://192.168.0.33/index.php?r=39597

ShareCenter Pro™ by D-Link

ENGLISH>Welcome admin! | Logout | Shutdown

Network Services >> File Sharing

File Sharing FTP NFS CIFS DFS

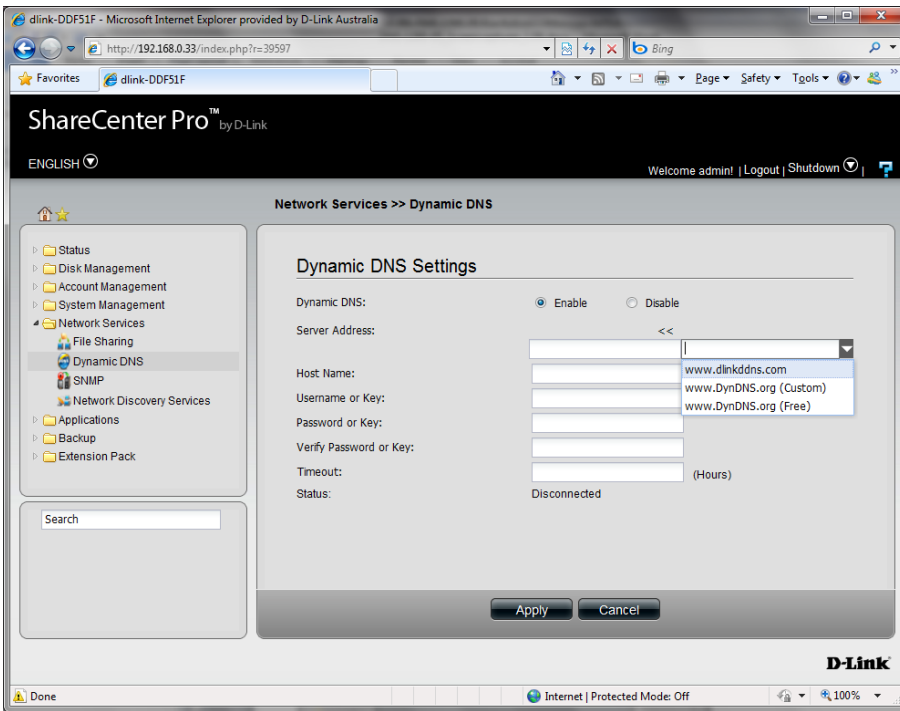
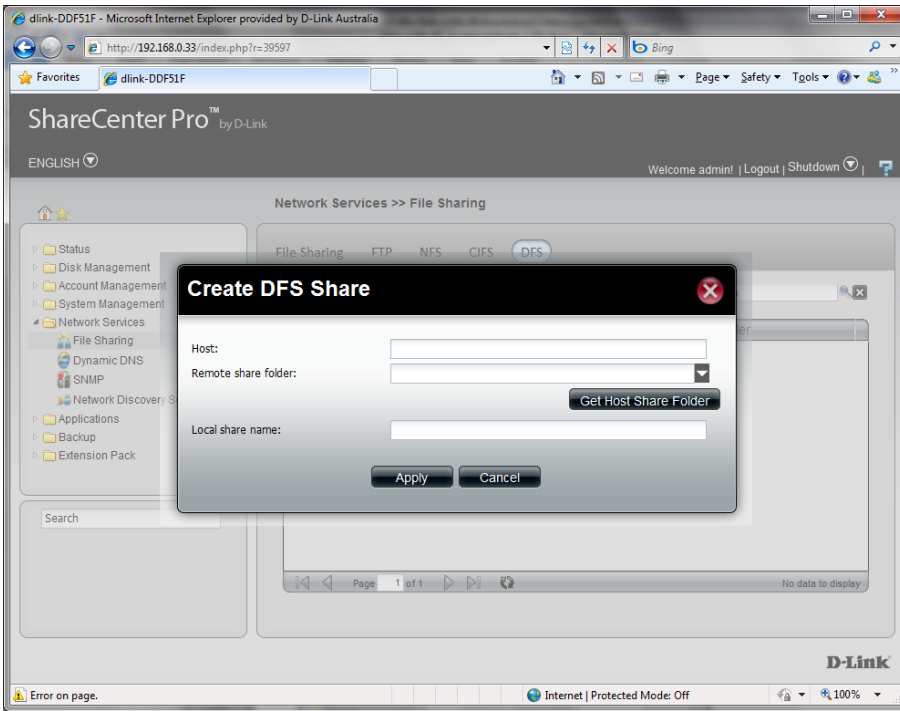
Create Edit Delete Search

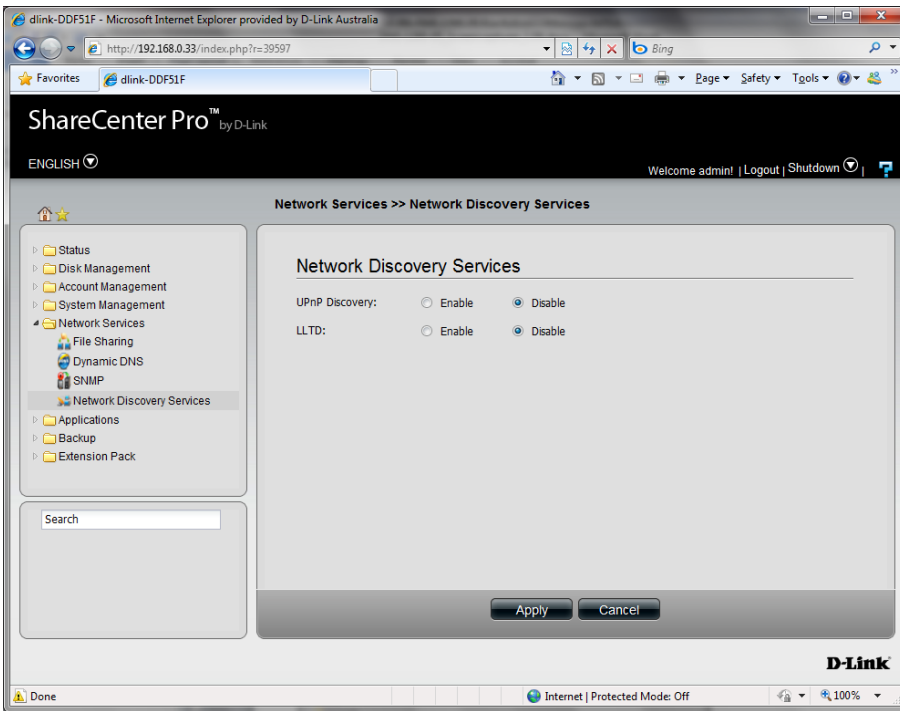
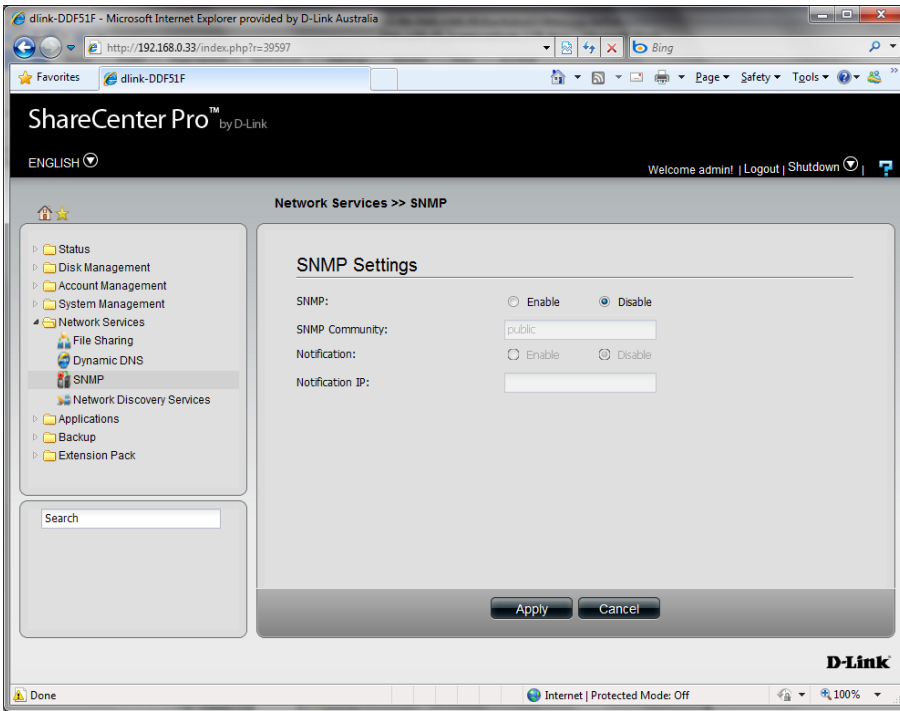
| Local share name | Host | Remote share folder |
|--------------------|------|---------------------|
| No data to display | | |

Page 1 of 1

D-Link

Done Internet | Protected Mode: Off 100%





dlink-DDF51F - Microsoft Internet Explorer provided by D-Link Australia

http://192.168.0.33/index.php?r=39597

ShareCenter Pro™ by D-Link

ENGLISH>Welcome admin! | Logout | Shutdown

Applications >> Web File Manager

Web File Manager

Server: Enable Disable

HTTP Port:

SSL Connection: Enable Disable

SSL Port:

Apply Cancel

D-Link

Done Internet | Protected Mode: Off 100%

dlink-DDF51F - Microsoft Internet Explorer provided by D-Link Australia

http://192.168.0.33/index.php?r=39597

ShareCenter Pro™ by D-Link

ENGLISH>Welcome admin! | Logout | Shutdown

Applications >> Download Manager

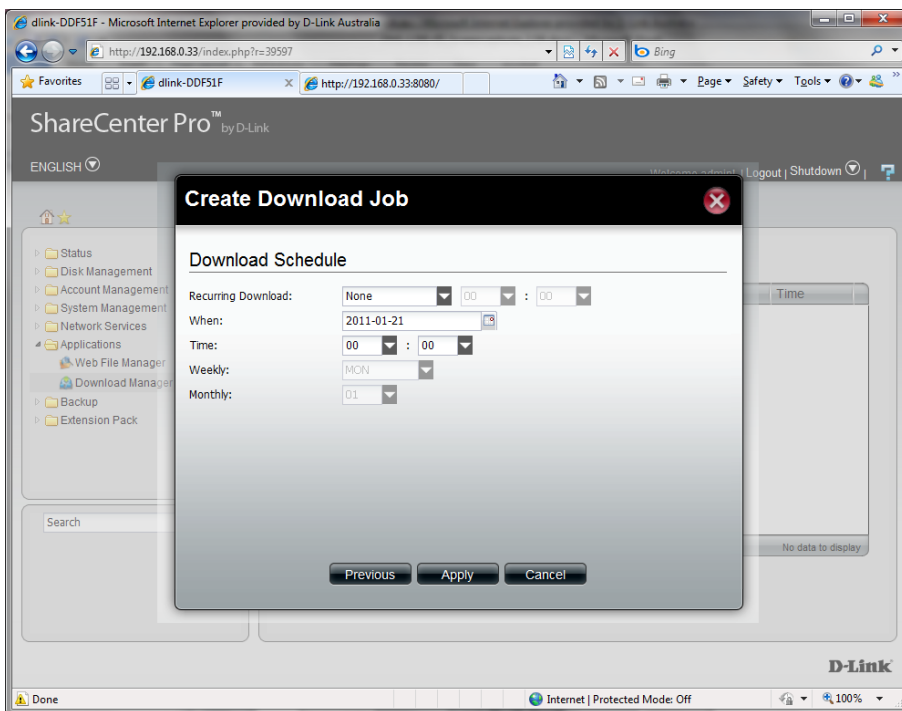
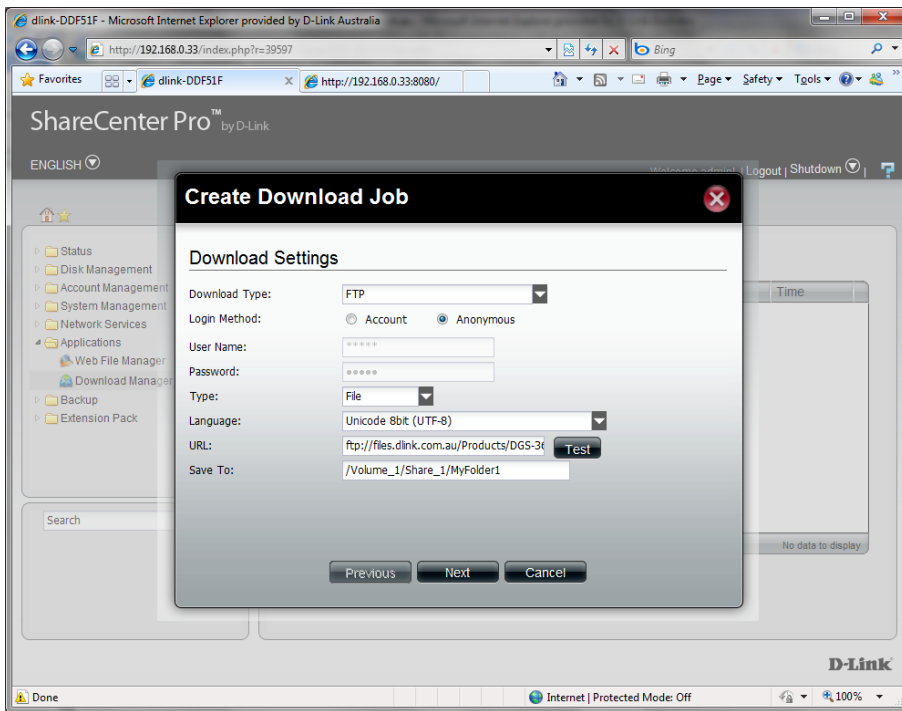
Create Edit Delete

| Stat... | % | Sp... | Download Path | Save To | Time |
|--------------------|---|-------|---------------|---------|------|
| No data to display | | | | | |

Page 1 of 1

D-Link

Done Internet | Protected Mode: Off 100%



dlink-DDF51F - Microsoft Internet Explorer provided by D-Link Australia

http://192.168.0.33/index.php?r=39597

ShareCenter Pro™ by D-Link

ENGLISH>Welcome admin! | Logout | Shutdown

Applications >> Download Manager

Create Edit Delete

| Stat... | % | Sp... | Download Path | Save To | Time |
|---------|----|-------|--|---------------------------|---------------|
| | -- | -- | ftp://files.dlink.com.au/Products/D... | Volume_1/Share_1/MyFol... | 01/21/11 1... |

Page 1 of 1 | Displaying 1 - 1 of 1

D-Link

Done | Internet | Protected Mode: Off | 100%

dlink-DDF51F - Microsoft Internet Explorer provided by D-Link Australia

http://192.168.0.33/index.php?r=39597

ShareCenter Pro™ by D-Link

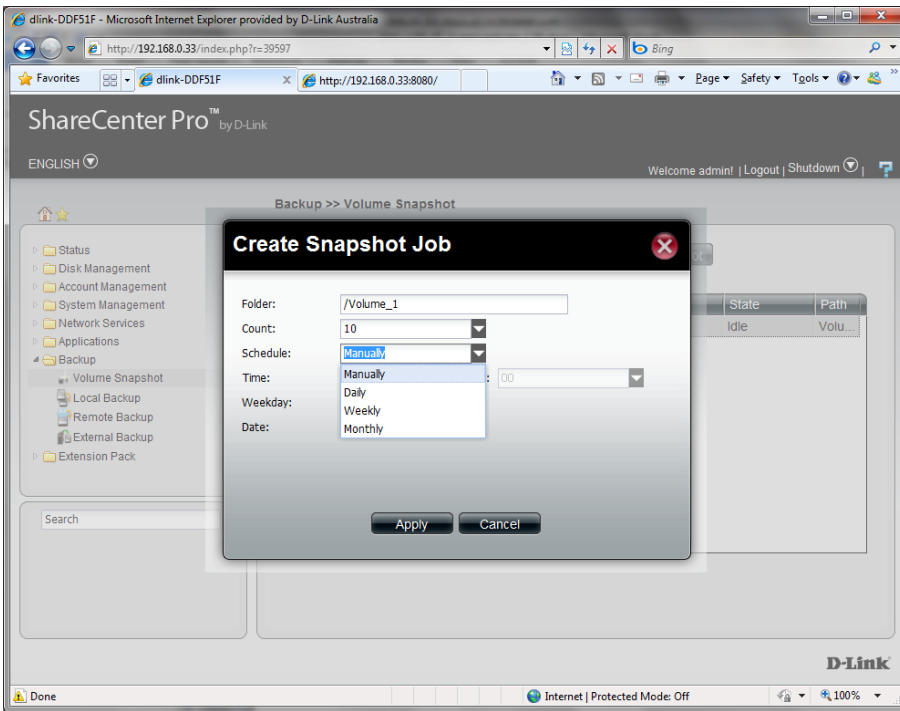
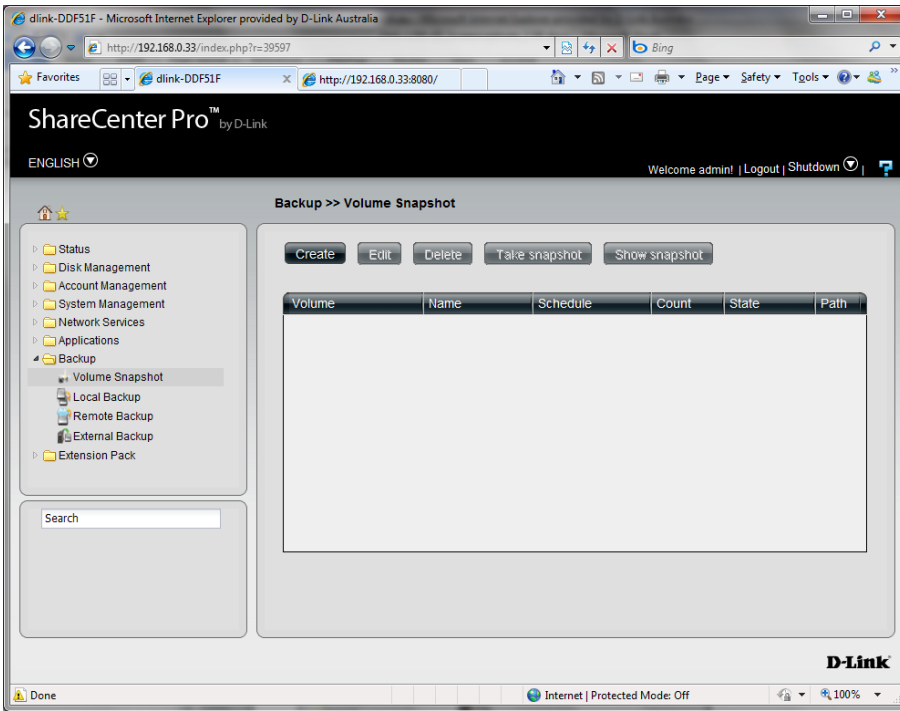
ENGLISH>Welcome admin! | Logout | Shutdown

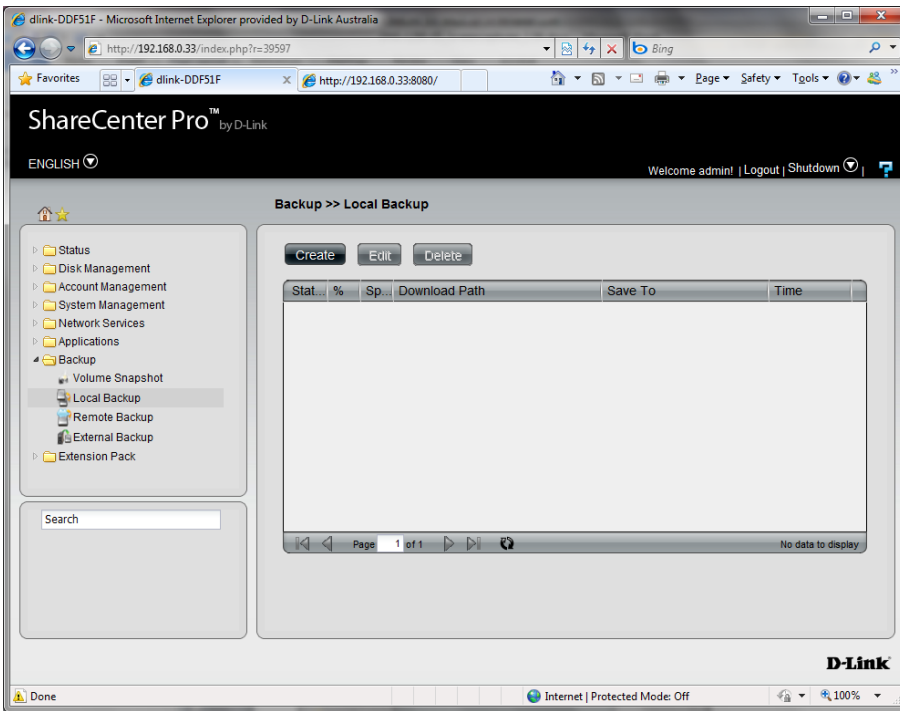
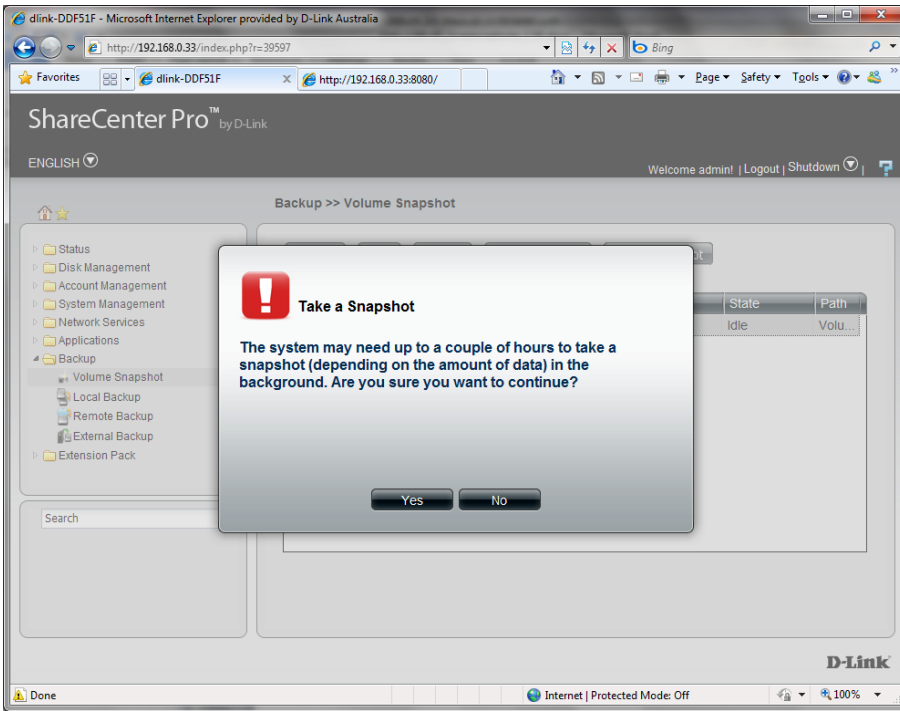
Backup

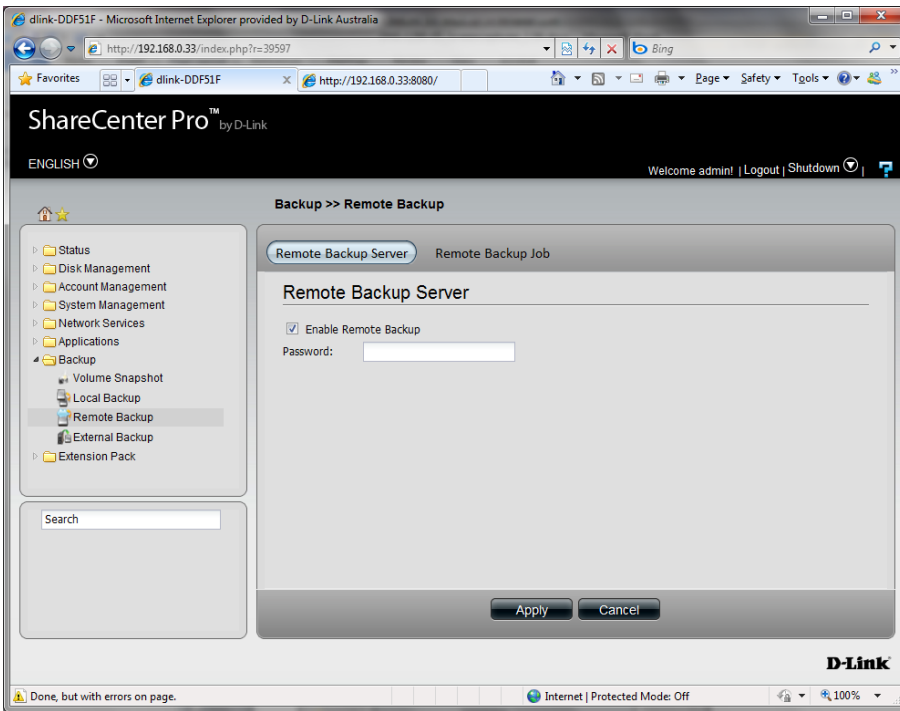
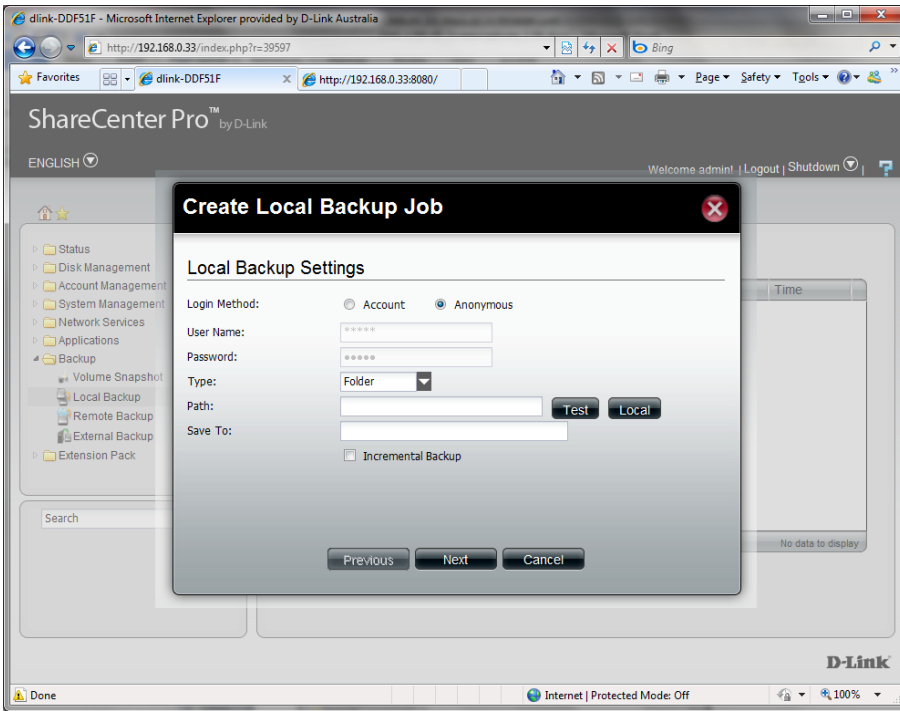
Volume Snapshot Local Backup Remote Backup External Backup

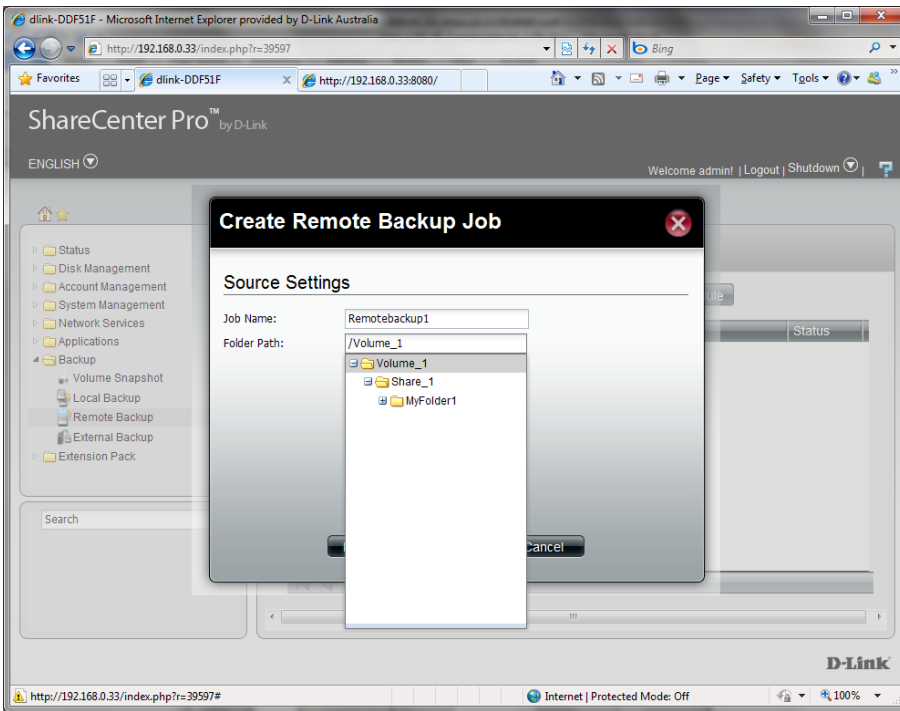
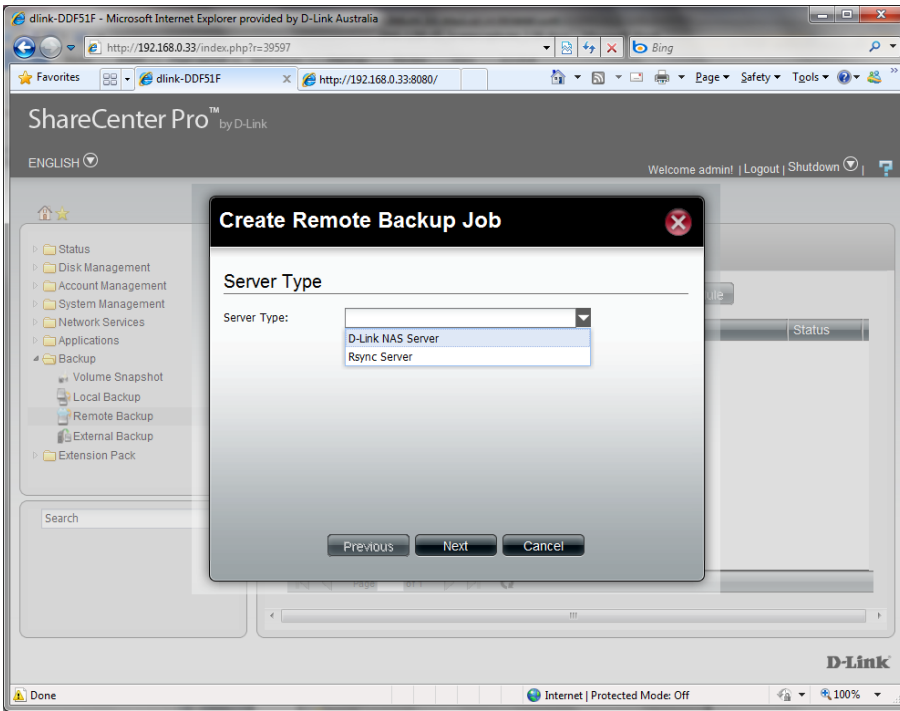
D-Link

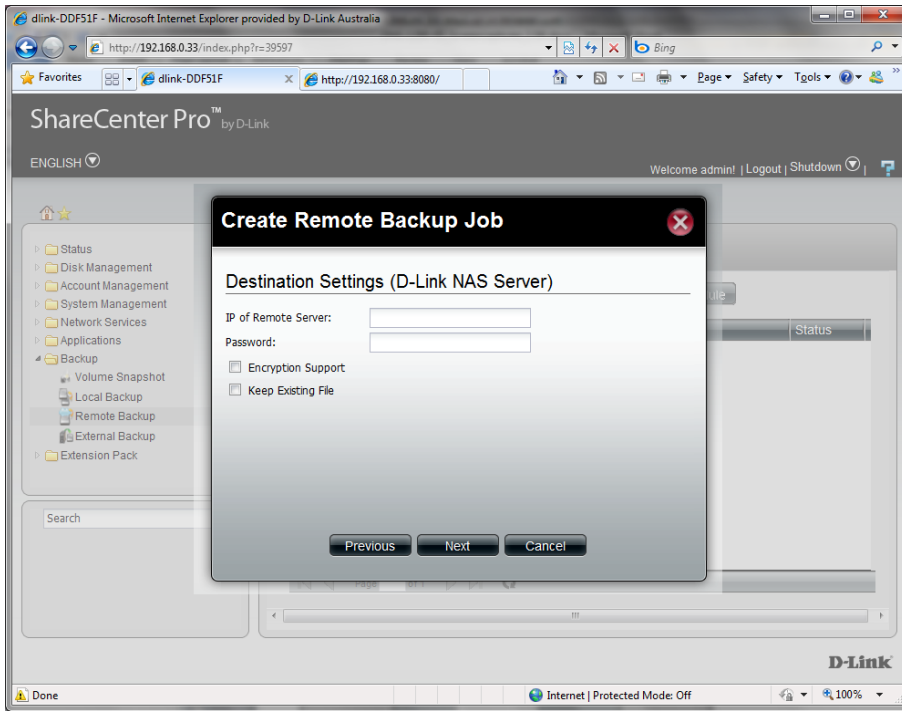
Done, but with errors on page. | Internet | Protected Mode: Off | 100%











dlink-DDF51F - Microsoft Internet Explorer provided by D-Link Australia
 http://192.168.0.33/index.php?r=39597

ShareCenter Pro™ by D-Link

ENGLISH>Welcome admin! | Logout | Shutdown

Backup >> External Backup

USB Backup

Source: Right Port Left Port

Select Path:

Mode: Incremental Backup

Apply Cancel

D-Link

Done Internet | Protected Mode: Off 100%

dlink-DDF51F - Microsoft Internet Explorer provided by D-Link Australia
 http://192.168.0.33/index.php?r=39597

ShareCenter Pro™ by D-Link

ENGLISH>Welcome admin! | Logout | Shutdown

Extension Pack >> Extension Pack

Add-Ons Settings

File Path: Browse... Apply

Add-Ons List

Enabled Disabled Start Stop

| Number | Module Name | Version | Status | Start / ... | Delete |
|--------|-------------|---------|--------|-------------|--------|
| | | | | | |

D-Link

Done, but with errors on page. Internet | Protected Mode: Off 100%