

D-Link Quick Installation Guide

This product can be set up using any current Web browser, i.e., Internet Explorer 6 or Netscape Navigator 6 or above.



DSA-3100
Airspot™ Public/
Private Gateway

Before You Begin

You will need the following:

- Computer with an Ethernet adapter and a Windows, Mac, or Unix based operating system.
- Internet Explorer or Netscape Navigator, version 6.0 or above, with JavaScript enabled.

Check Your Package Contents

These are the items included with your DSA-3100 purchase:



DSA-3100 *Airspot™* Public/Private Gateway



CD-ROM (containing Manual and Warranty)



2x Ethernet (CAT5 UTP/Straight-Through) Cables



1x Ethernet (CAT5 UTP/Crossover) Cable



Console Cable (RS-232)



5V DC Power Adapter



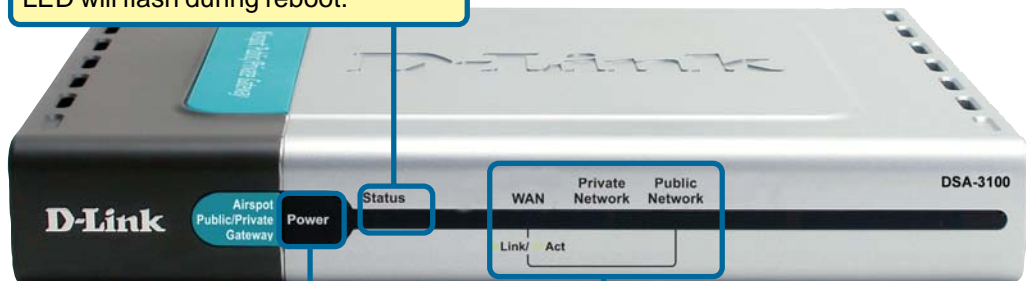
Using a power supply with a different voltage rating will damage this product and void its warranty.

If any of the above items are missing, please contact your reseller.

1

Connecting The DSA-3100 To Your Network

STATUS LED: A solid LED indicates the DSA-3100 is working properly. The LED will flash during reboot.



POWER LED: A solid light indicates a proper connection to the power supply.

NETWORK LEDs: A solid light on the port indicates a good connection. The LEDs blink during data transmission.

Public LAN Port: Connects to your public network .

WAN port: Connects to your high speed Internet connection.



CONSOLE: Connects to your computer's COM port using the provided Console Cable. (Port also connects to optional DSA-3100P Ticket Printer)

Private LAN: Connects to your private network.

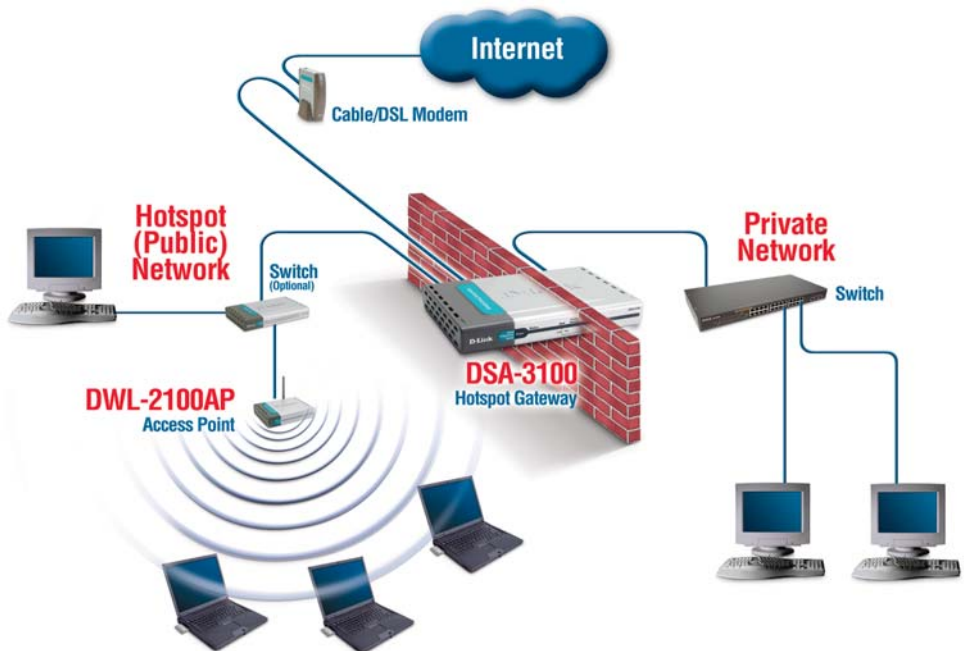
Power Receptor: Connection for the Power Adapter.

1

Connecting The DSA-3100 To Your Network (continued)

- A. Power on the DSA-3100.
- B. Connect an Ethernet cable from the **Public LAN** port to a switch or wireless access point on your public network. The Public LAN LED will illuminate to indicate a proper connection. If the Public LAN LED doesn't light up, please check the connections.
- C. Connect an Ethernet cable from the **Private LAN** port to an Ethernet port on your private network's switch. If properly connected, the Private LAN LED will illuminate. *(Note: For configuration purposes a computer can be connected directly to this port using a standard Ethernet cable)*
- D. Attach an Ethernet cable to the **WAN port** on the back panel of the DSA-3100. Connect the other end to a router or directly to a broadband modem. The WAN LED light will illuminate to indicate proper connection.

When you have completed the steps in this *Quick Installation Guide*, your connected network should look similar to this:



2

Using The Setup Wizard



Connect the computer you will be using for configuration to the Private Network or directly to the Private LAN Port.

To obtain a new IP address from the DSA-3100 you may need to restart your computer or release and renew your IP address. Make sure that the network adapter in your computer is configured properly. Instructions for configuring the network adapter to obtain an IP address automatically from the DSA-3100 can be found in the Appendix.

The DSA-3100 provides Web based configuration. You can configure your DSA-3100 using a Web browser such as Internet Explorer or Netscape Navigator in Windows, Macintosh, or UNIX based environments.

Open your Web browser and type **https://192.168.0.40** into the URL address box. Then press the **Enter** or **Return** key.

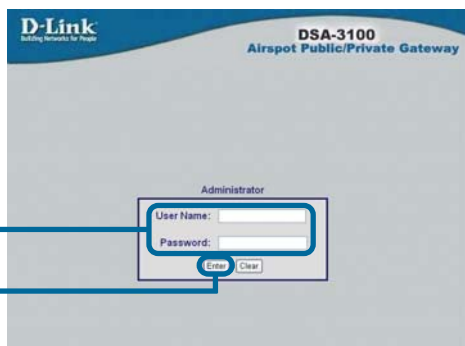


Be sure to use **https** instead of http when typing in the URL address. This ensures that a secure connection is made between your system and the DSA-3100.

(The IP Address shown in the example above is the default setting. If you've changed the IP Address of the DSA-3100 to conform to a network then input that IP Address instead of the default IP Address.)

Type **admin** for both the username and password.

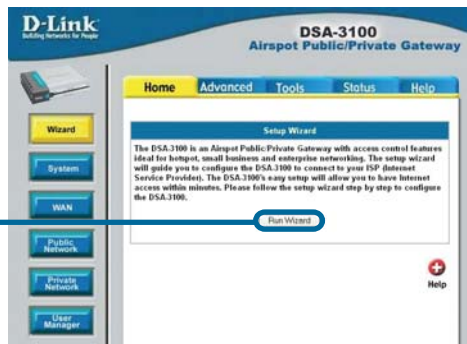
Click **Enter**



2

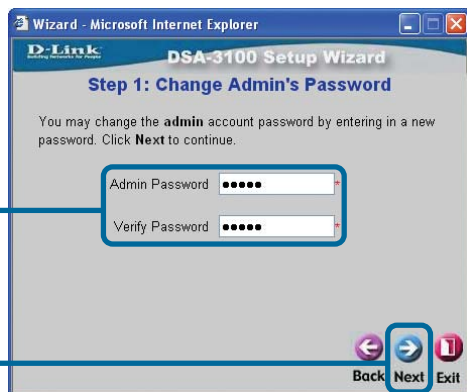
Using The Setup Wizard (continued)

Once you have logged in, the home screen will appear.



Click **Run Wizard**

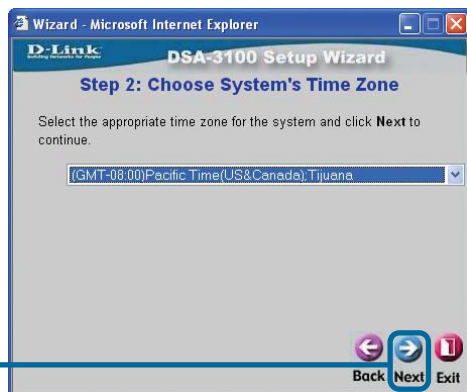
You have the option to establish a new password for the admin account.



Enter a new **admin password** and retype it for verification

Click **Next**

Select the appropriate time zone for your location.



Click **Next**

2

Using The Setup Wizard (continued)

Enter the system information:

- **Succeed Page:** The URL users are directed to when successfully authenticated.
- **Time Server:** Specify an external time server for time synchronization.
- **DNS Server IP:** IP address of the Domain Name Server.

Click **Next**

Select the type of Internet connection that you have.

Select an **Option**

Click **Next**

Configure the Public LAN Port:

- **IP Address:** The IP address used for the DSA-3100 on the Public LAN.
- **Subnet Mask:** The Subnet Mask of the DSA-3100 on the Public LAN.
- **DHCP Server Enabled/Disabled:** With DHCP Server enabled, IP addresses are provided automatically to clients on the Public LAN.

Click **Next**

2 Using The Setup Wizard (continued)

Specify the DHCP Server Settings.

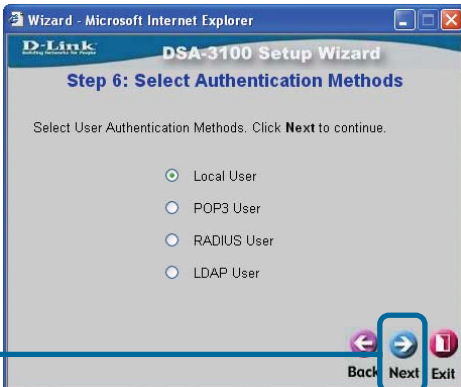
Specify a range of IP addresses to assign the DHCP clients. The range is entered in the format "Start IP – End IP" i.e. 192.168.0.101 – 192.168.0.200. Enter the Domain Name and Primary DNS Server settings for the clients. Entering a Secondary DNS Server is optional.

Click **Next**



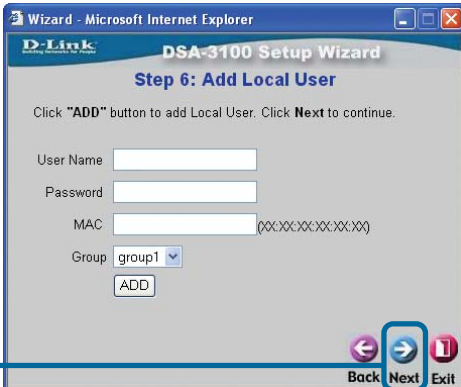
Select the User Manager based on the authentication methods you are using. For the purpose of this Quick Installation Guide we will select the Local User authentication method.

Click **Next**



Enter a User Name and Password information as necessary. User Accounts can be restricted to specific MAC addresses if desired. Click Add after entering each User Account. Repeat this step for each user.

Click **Next**



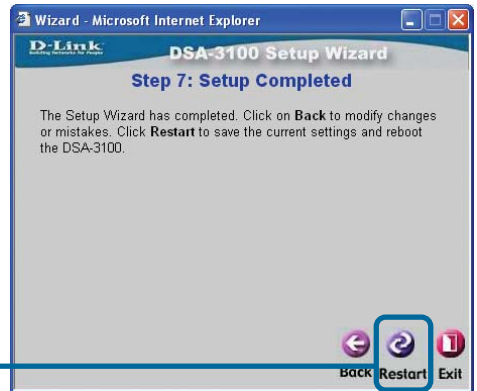
2

Using The Setup Wizard (continued)

Setup Wizard Complete

Click **Restart** to complete your configuration.

Click **Restart**



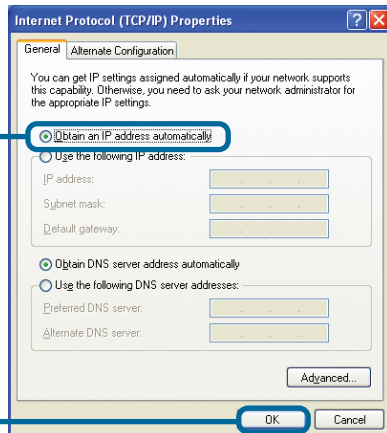
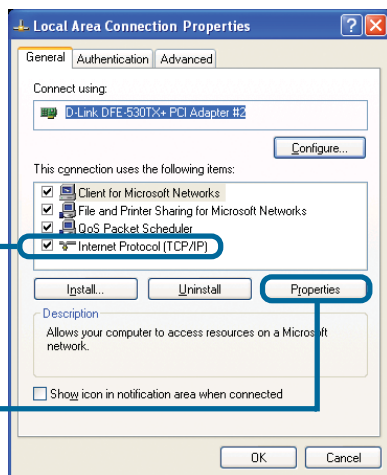
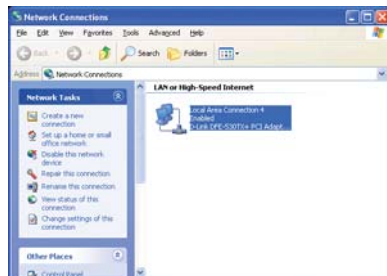
Appendix - IP Configuration

To connect to the network, make sure the network adapter in your computer is configured properly. Here's how to configure the network adapter to obtain an IP address automatically from the DSA-3100 Airspot™ Public/Private Gateway.

Microsoft Windows XP:

Go to **Start > right click on**

My Network Places > select Properties > Right-click on the **Network Connection** of the Ethernet adapter connecting to the DSA-3100 and select Properties.

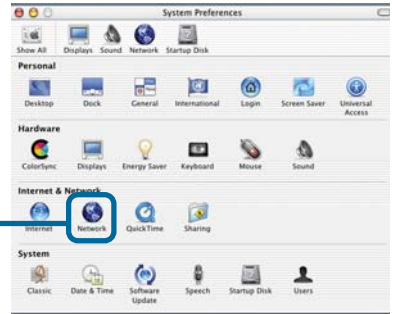


Appendix - IP Configuration (continued)

Apple Mac OS X:

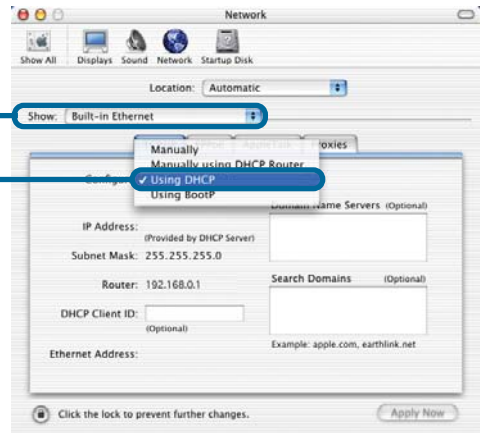
Go to the **Apple Menu** and **Select System Preferences**.

Click on **Network**



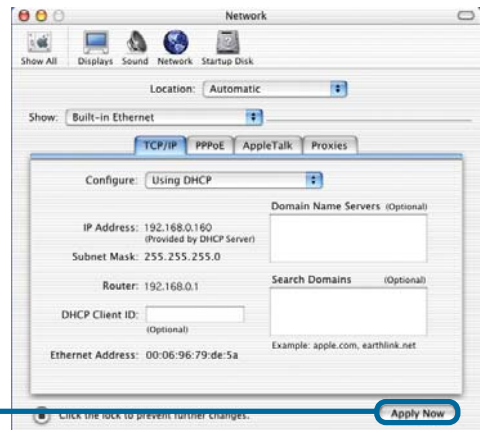
Select **Built-in Ethernet** in the show pull down menu

Select **Using DHCP** in the Configure pull down menu



The IP address information, the Subnet Mask, the DSA-3100 IP address and the Ethernet adapter address will appear.

Click on **Apply Now**



Notes

Technical Support

You can find software updates and user documentation on the D-Link website.

D-Link provides free technical support for customers within the United States and within Canada for the duration of the warranty period on this product.

U.S. and Canadian customers can contact D-Link technical support through our website, or by phone.

Tech Support for customers within the United States:

D-Link Technical Support over the Telephone:

(877) 453-5465
6am-6pm PST, Mon-Fri.

D-Link Technical Support over the Internet:

<http://support.dlink.com>
email: support@dlink.com

Tech Support for customers within Canada:

D-Link Technical Support over the Telephone:

(800) 361-5265
Monday to Friday 8:30am to 9:00pm EST

D-Link Technical Support over the Internet:

<http://support.dlink.ca>
email: support@dlink.ca

