

Captures of DSL-300 loaded with Protocol Converter firmware


PPPoE mode

http://192.168.0.1/ - Microsoft Internet Explorer

File Edit View Favorites Tools Help

Back Forward Stop Home Search Favorites History Print View Source

Address http://192.168.0.1/ Go Links >>

**D-Link**
Building Networks For People

ADSL Modem

D-Link DSL-300

- Account Configuration
- VPI/VCI Configuration
- Update Firmware
- Accounts Management
- Summary

Account Configuration

Connection Type	PPPoE
Encapsulation	LLC
User Name	ddlinkau@bigpond
Password	*****
ISP	
Authentication	chap
Connect On Demand	enabled
Idle Time	0 minutes

OK

PPP Information

IP Address	0.0.0.0
Gateway	0.0.0.0
Connection Status	Disconnect

Connect Disconnect

Opening page http://192.168.0.1/html/devicePanel.html... Internet

http://192.168.0.1/ - Microsoft Internet Explorer

File Edit View Favorites Tools Help

Back Forward Stop Search Favorites History Print

Address http://192.168.0.1/ Go Links >>

D-Link®
Building Networks For People

ADSL Modem

D-Link DSL-300

- [Account Configuration](#)
- [VPI/VCI Configuration](#)
- [Update Firmware](#)
- [Accounts Management](#)
- [Summary](#)

Account Configuration

Connection Type	PPPoE
Encapsulation	LLC
User Name	user@iinet.net.au
Password	****
ISP	
Authentication	pap
Connect On Demand	enabled
Idle Time	0 minutes

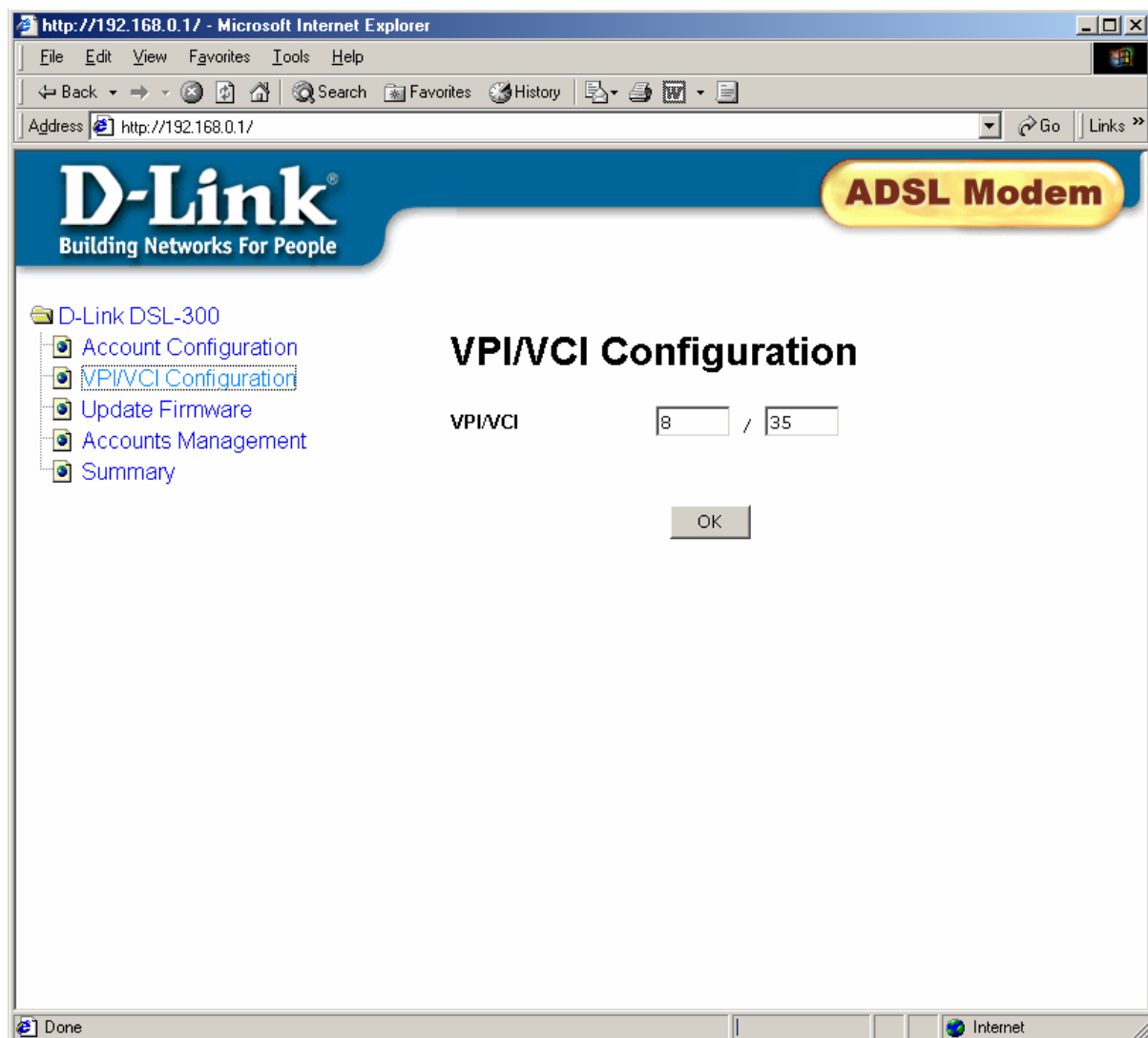
OK

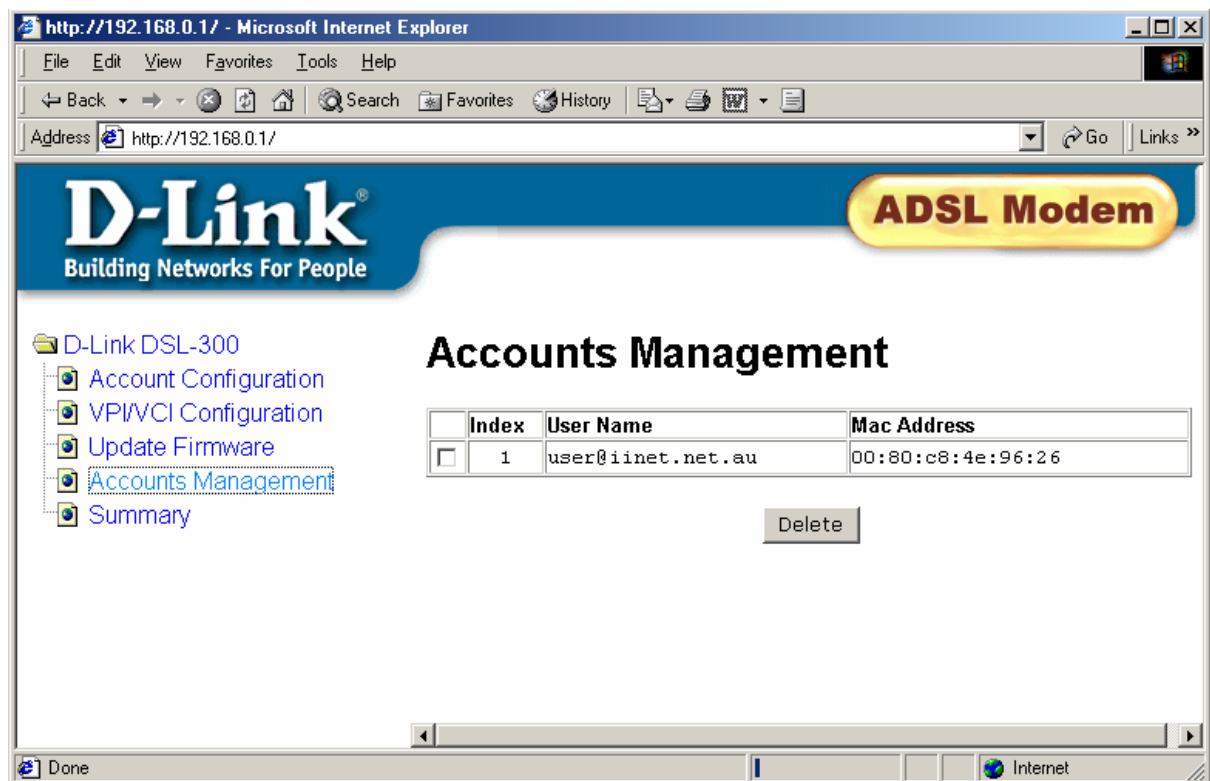
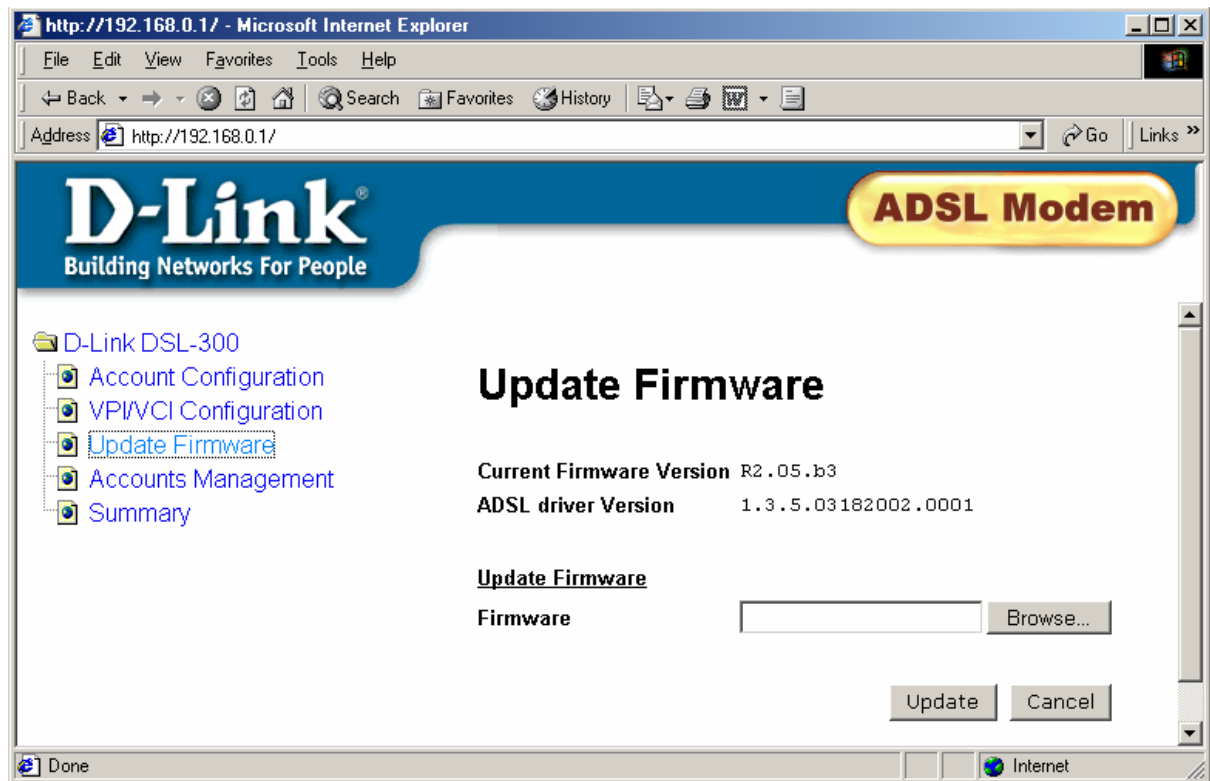
PPP Information

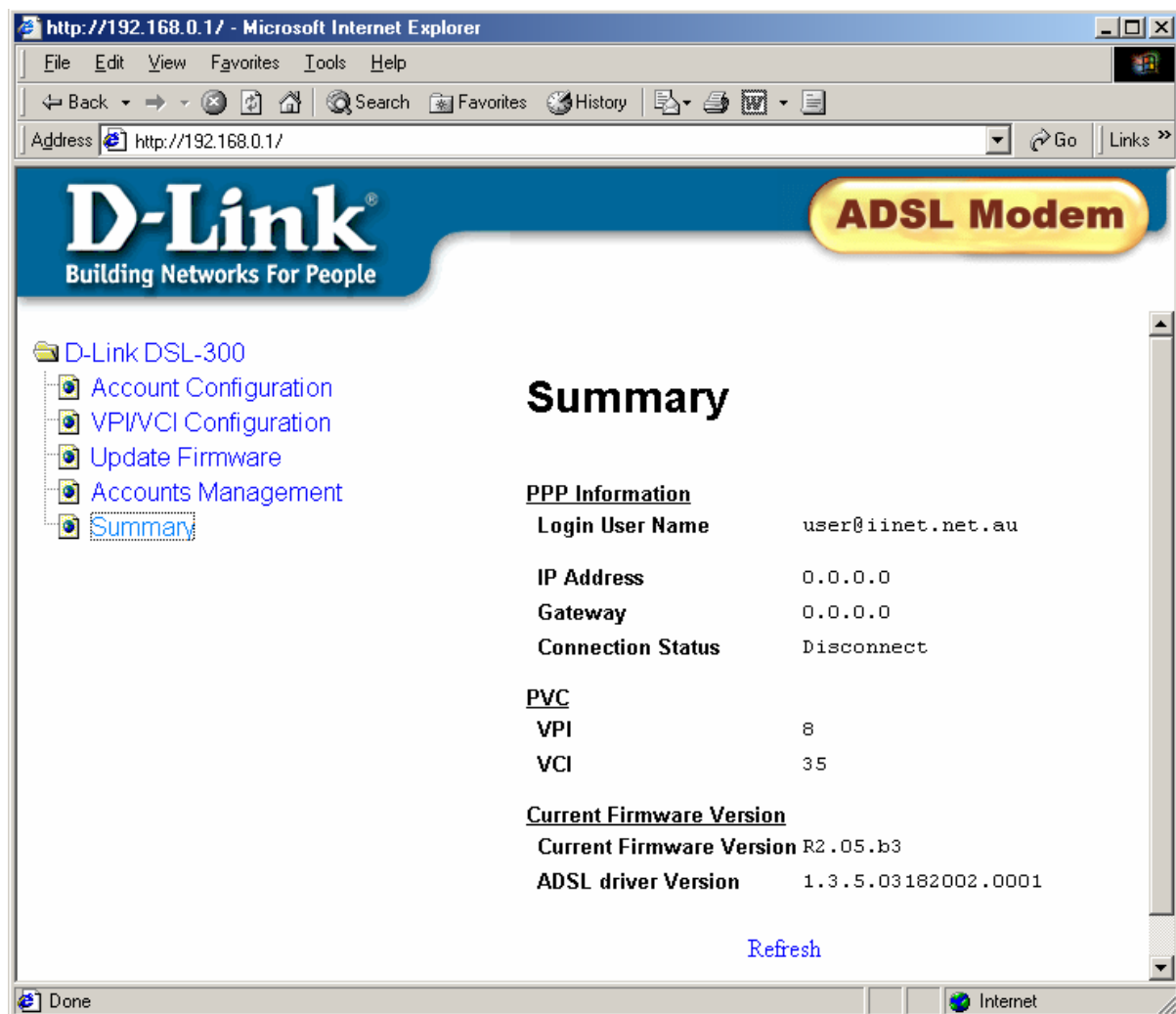
IP Address	0.0.0.0
Gateway	0.0.0.0
Connection Status	Disconnect

Connect Disconnect

Done Internet







PPPoA mode

The screenshot shows the D-Link DSL-300 web interface in Microsoft Internet Explorer. The browser's address bar shows `http://192.168.0.1/`. The page has a blue header with the D-Link logo and the text "Building Networks For People". A yellow button labeled "ADSL Modem" is in the top right. On the left, a navigation menu lists: "D-Link DSL-300", "Account Configuration", "VPI/VCI Configuration", "Update Firmware", "Accounts Management", and "Summary". The main content area is titled "Account Configuration".

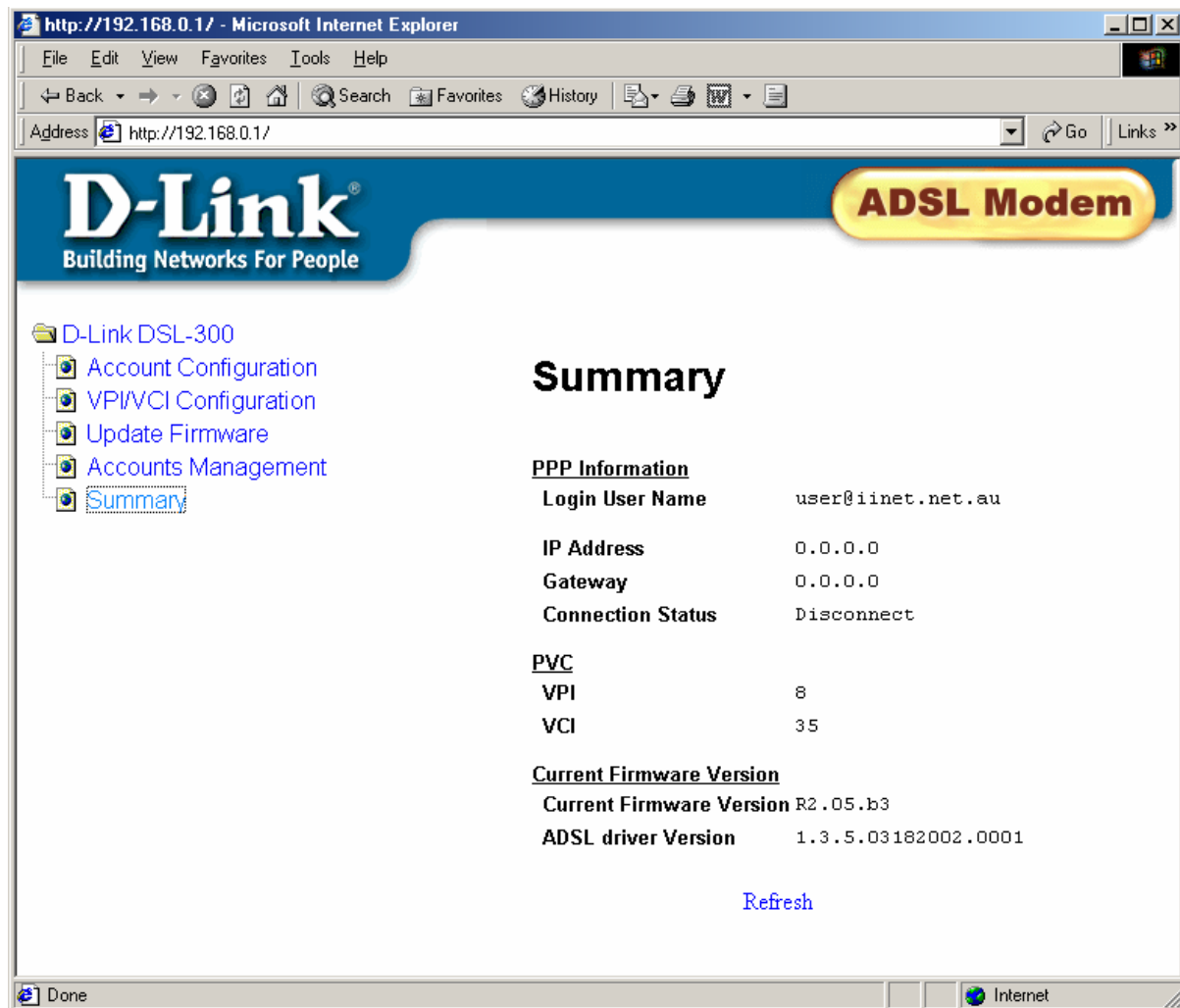
Account Configuration

Connection Type:
Encapsulation:
User Name:
Password:
ISP:
Authentication:
Connect On Demand:
Idle Time: minutes

PPP Information

IP Address:
Gateway:
Connection Status:

The rest are identical.



Bridge Mode

The screenshot shows a web browser window titled "http://192.168.0.1/ - Microsoft Internet Explorer". The address bar shows "http://192.168.0.1/". The page features the D-Link logo and the text "Building Networks For People". A yellow button labeled "ADSL Modem" is in the top right. On the left, a navigation menu lists: "D-Link DSL-300", "Account Configuration", "VPI/VCI Configuration", "Update Firmware", "Accounts Management", and "Summary". The main content area is titled "Account Configuration" and contains the following fields:

Connection Type	<input type="text" value="Bridge"/>
Encapsulation	<input type="text" value="LLC"/>
User Name	<input type="text" value="user@iinet.net.au"/>
Password	<input type="password" value="****"/>
ISP	<input type="text"/>
Authentication	<input type="text" value="pap"/>
Connect On Demand	<input type="text" value="enabled"/>
Idle Time	<input type="text" value="0"/> minutes

An "OK" button is located to the right of the "Idle Time" field.

The rest are identical.

