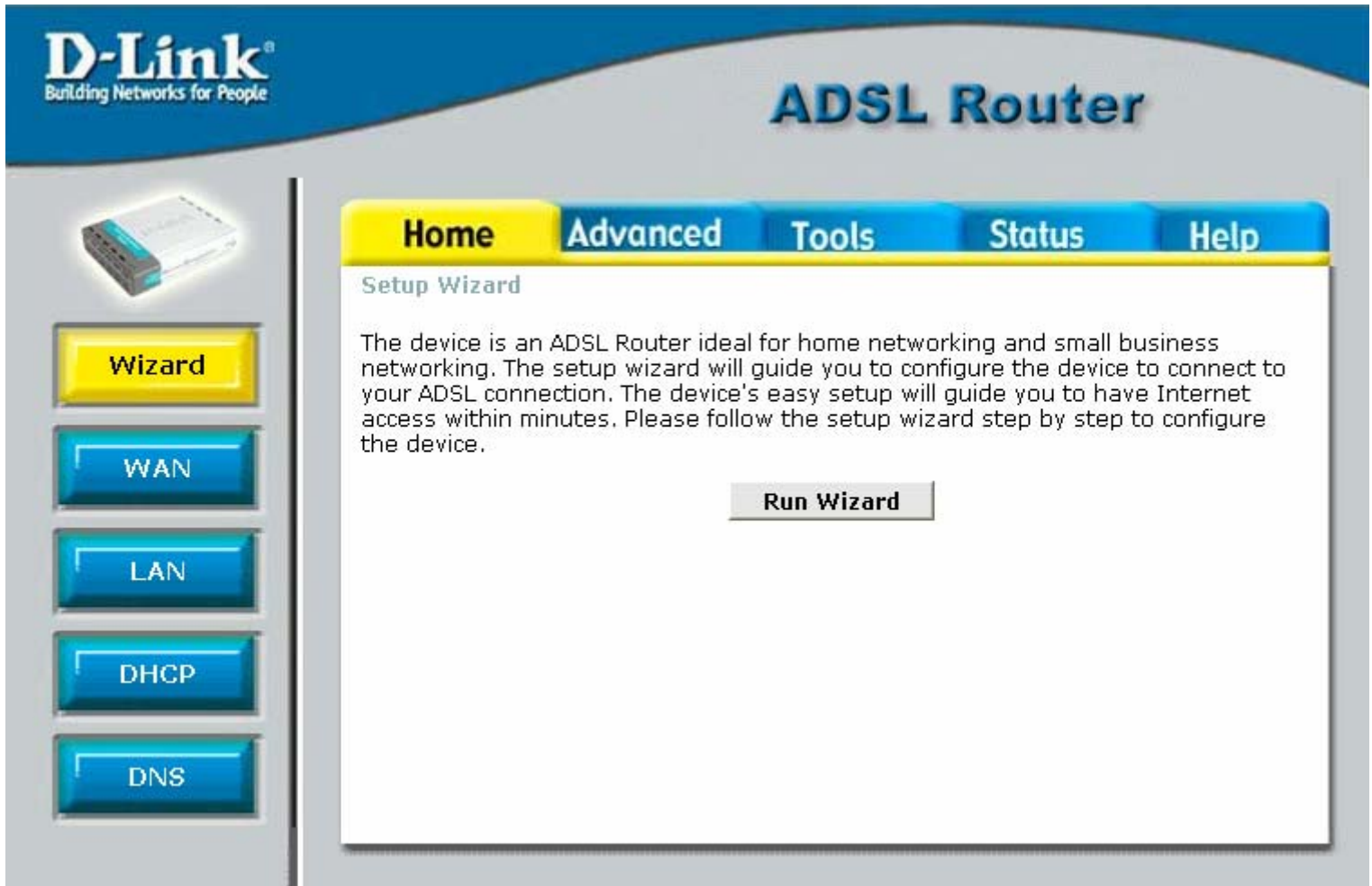


DSL-504G Screenies

FW: - R2.01.B9.AU

Created by: Scott Howell





Wizard

WAN

LAN

DHCP

DNS

Home

Advanced

Tools

Status

Help

ATM VC Setting

Please select the appropriate option to connect to your ISP.

PVC

VPI

VCI

Virtual Circuit

WAN Settings

- ☒ Dynamic IP Address **Choose this option to obtain an IP address automatically from your ISP.**
- ☐ Static IP Address **Choose this option to set static IP information provided to you by your ISP.**
- ☐ PPPoE/PPPoA **Choose this option if your ISP uses PPPoE/PPPoA(For most DSL users).**
- ☐ Bridge Mode **Choose this option if your ISP uses Bridge Mode.**

Dynamic IP

Connection Type

Default Route
1483 Routed LLC-Mux
IPoA VC-Mux
IPoA LLC
IPoA LLC(1577)



Apply



Cancel



Wizard

WAN

LAN

DHCP

DNS

Home

Advanced

Tools

Status

Help

ATM VC Setting

Please select the appropriate option to connect to your ISP.

PVC

VPI

VCI

Virtual Circuit

WAN Settings

- ☐ Dynamic IP Address **Choose this option to obtain an IP address automatically from your ISP.**
- ☒ Static IP Address **Choose this option to set static IP information provided to you by your ISP.**
- ☐ PPPoE/PPPoA **Choose this option if your ISP uses PPPoE/PPPoA(For most DSL users).**
- ☐ Bridge Mode **Choose this option if your ISP uses Bridge Mode.**

Static IP

Connection Type

IP Address

Subnet Mask

ISP Gateway Address

Default Route



Apply Cancel



Wizard

WAN

LAN

DHCP

DNS

Home

Advanced

Tools

Status

Help

ATM VC Setting

Please select the appropriate option to connect to your ISP.

PVC

VPI

VCI

Virtual Circuit

WAN Settings

- ☐ Dynamic IP Address **Choose this option to obtain an IP address automatically from your ISP.**
- ☐ Static IP Address **Choose this option to set static IP information provided to you by your ISP.**
- ☒ PPPoE/PPPoA **Choose this option if your ISP uses PPPoE/PPPoA (For most DSL users).**
- ☐ Bridge Mode **Choose this option if your ISP uses Bridge Mode.**

PPPoE/PPPoA

Connection Type

Username

Password

Authentication

MRU

Obtain DNS Automatically

Default Route



Apply



Cancel



Wizard

WAN

LAN

DHCP

DNS

Home

Advanced

Tools

Status

Help

ATM VC Setting

Please select the appropriate option to connect to your ISP.

PVC

VPI

VCI

Virtual Circuit

WAN Settings

- ☐ Dynamic IP Address **Choose this option to obtain an IP address automatically from your ISP.**
- ☐ Static IP Address **Choose this option to set static IP information provided to you by your ISP.**
- ☐ PPPoE/PPPoA **Choose this option if your ISP uses PPPoE/PPPoA(For most DSL users).**
- ☒ Bridge Mode **Choose this option if your ISP uses Bridge Mode.**

Bridge Mode

Connection Type



Apply



Cancel



Wizard

WAN

LAN

DHCP

DNS

Home

Advanced

Tools

Status

Help

LAN Settings

These are the IP settings of the LAN interface of the device. These settings may be referred to as Private settings. You may change the LAN IP address if needed.

LAN IP Address

192.168.0.1

LAN Network Mask

255.255.255.0



Apply



Cancel



Wizard

WAN

LAN

DHCP

DNS

Home

Advanced

Tools

Status

Help

DHCP Server

Please select the appropriate option for the LAN network.

☒ No DHCP

Choose this option, the IP address must be manually assigned at each device connected to device.

☐ DHCP Server

Choose this option to setup as a DHCP Server to distribute IP addresses to the LAN network.

☐ DHCP Relay

Choose this option to setup as a DHCP Relay to relay DHCP request to the target DHCP Server.



Apply



Cancel



Wizard

WAN

LAN

DHCP

DNS

Home

Advanced

Tools

Status

Help

DHCP Server

Please select the appropriate option for the LAN network.

- ☐ No DHCP Choose this option, the IP address must be manually assigned at each device connected to device.
- ☒ DHCP Server Choose this option to setup as a DHCP Server to distribute IP addresses to the LAN network.
- ☐ DHCP Relay Choose this option to setup as a DHCP Relay to relay DHCP request to the target DHCP Server.

DHCP Server

Starting IP Address 10.1.1.

Ending IP Address 10.1.1.

Lease Time



Apply **Cancel**

DHCP Clients List

#	IP Address	Mac Address
No DHCP Client!		



Wizard

WAN

LAN

DHCP

DNS

Home

Advanced

Tools

Status

Help

DHCP Server

Please select the appropriate option for the LAN network.

- ☐ No DHCP Choose this option, the IP address must be manually assigned at each device connected to device.
- ☐ DHCP Server Choose this option to setup as a DHCP Server to distribute IP addresses to the LAN network.
- ☒ DHCP Relay Choose this option to setup as a DHCP Relay to relay DHCP request to the target DHCP Server.

DHCP Relay

DHCP Relay IP



Apply



Cancel



Wizard

WAN

LAN

DHCP

DNS

Home

Advanced

Tools

Status

Help

DNS Configuration

The DNS Configuration allows the user to set the configuration of DNS proxy.

DNS Relay Selection

Enabled ▾

User Configuration:

Enabled

Disabled

Preferred DNS Server

Alternate DNS Server



Apply



Cancel



NAT

Virtual Server

Filters

Routing

Firewall

RIP

PPP

ADSL

ATM VCC

Home

Advanced

Tools

Status

Help

DMZ

DMZ (Demilitarized Zone) is used to allow a single computer on the LAN to be exposed to the Internet.

NAT

Enabled

IP Address



Apply



Cancel



NAT

Virtual Server

Filters

Routing

Firewall

RIP

PPP

ADSL

ATM VCC

Home

Advanced

Tools

Status

Help

Virtual Server

Virtual Server is used to allow Internet users access to LAN services.

NAT

Private IP

Protocol Type

Private Port

Public Port ~

Single Port

Port Range

Any Port

Safe Ports



Apply Cancel

Virtual Servers List

#	Private IP	Protocol	Private Port	Public Port



NAT

Virtual Server

Filters

Routing

Firewall

RIP

PPP

ADSL

ATM VCC

Home

Advanced

Tools

Status

Help

Filters

Filters are used to allow or deny LAN or WAN users from accessing the Internet or internal Network.

☒ Outbound Filter ☐ Inbound Filter

IP Outbound Filter

Filters are used to allow or deny LAN users from accessing the Internet.

Source IP ~ Any IP

Destination IP ~ Any IP

Source Port ~ Any Port

Destination Port ~ Any Port

Protocol

Action



Apply Cancel

Outbound Filter List

#	Source IP	Destination IP	Prot.	Act.	
1	Any IP	Any IP	All	Allow	
2	Any IP	Any IP	UDP	Allow	
3	Any IP	Any IP	TCP	Allow	
4	Any IP	Any IP	TCP	Allow	
5	Any IP	Any IP	TCP	Allow	
6	Any IP	Any IP	TCP	Allow	
7	Any IP	Any IP	TCP	Allow	
8	Any IP	Any IP	TCP	Allow	
9	Any IP	Any IP	ICMP	Allow	
10	Any IP	Any IP	TCP	Deny	
11	Any IP	Any IP	UDP	Deny	
12	Any IP	Any IP	TCP	Deny	
13	Any IP	Any IP	TCP	Deny	
14	Any IP	Any IP	TCP	Deny	
15	Any IP	Any IP	ICMP	Deny	
16	Any IP	Any IP	TCP	Deny	
17	Any IP	Any IP	All	Allow	



NAT

Virtual Server

Filters

Routing

Firewall

RIP

PPP

ADSL

ATM VCC

Home

Advanced

Tools

Status

Help

Routing Table

IP Routes are used to define gateways and hops used to route data traffic. Most users will not need to use this feature as the previously configured default gateway and LAN IP settings on your host computers should be sufficient.

Destination

Netmask

Gateway



Apply



Cancel

Routing Table List

#	Destination	Netmask	Gateway	Interface	
1	127.0.0.0	255.0.0.0	127.0.0.1	lo-0	
2	192.168.1.0	255.255.255.0	192.168.1.1	eth-0	
3	192.168.1.1	255.255.255.255	127.0.0.1	lo-0	



NAT

Virtual Server

Filters

Routing

Firewall

RIP

PPP

ADSL

ATM VCC

Home

Advanced

Tools

Status

Help

Firewall Configuration

Protection Policy

Firewall attack can be configured based on you specific need.

Attack Protection ☐ Enable ☒ Disable

DOS Protection ☐ Enable ☒ Disable

Service Filtering

The following services can be configured based on your specific need.

- ☐ Ping from External Network.
- ☐ Telnet from External Network.
- ☐ FTP from External Network.



Apply



NAT

Virtual Server

Filters

Routing

Firewall

RIP

PPP

ADSL

ATM VCC

Home

Advanced

Tools

Status

Help

RIP System Wide Configuration

RIP is an Internet protocol you can set up to share routing table information with other routing devices on you LAN, at you ISP's location, or on remote networks connected to you network via the ADSL line.

RIP

IF Name

Send Mode

Receive Mode

RIP1

RIP2

BOTH

NONE



Apply



Cancel

Current RIP Settings

IF Name	Metric	Send Mode	Receive Mode	Action
ppp-0	1	RIP1	RIP1	



NAT

Virtual Server

Filters

Routing

Firewall

RIP

PPP

ADSL

ATM VCC

Home

Advanced

Tools

Status

Help

PPP Connection Configuration

This page is used to view and configure PPP connection status and setting.

Connection Status

Disconnected

Connect

Connection Setting

- ☒ Connection On Demand (Connection will close if idle for minutes)
☐ Manual (Use Connect/Disconnect button only)



Apply



Cancel

#	PVC	VPI	VCI	Connection Type
1	Pvc-0	8	35	ppp-0



NAT

Virtual Server

Filters

Routing

Firewall

RIP

PPP

ADSL

ATM VCC

Home

Advanced

Tools

Status

Help

ADSL Configuration

The ADSL Configuration page allows the user to set the configuration for ADSL protocols.

Modulation Type

G.dmt	▼
T1.413	
G.dmt	
G.lite	
Multimode	



Apply



Cancel



NAT

Virtual Server

Filters

Routing

Firewall

RIP

PPP

ADSL

ATM VCC

Home

Advanced

Tools

Status

Help



ATM VCC

This page is used to view and configure ATM VCs.

PVC	Pvc0 ▾
VPI	8
VCI	35
Virtual Circuit	Enabled ▾
WAN Setting	PPPoE/PPPoA ▾
	Dynamic IP Address
	Static IP Address
	PPPoE/PPPoA
	Bridge Mode
	PPPoE LLC ▾
Connection Type	
Username	user@isp.com.au
Password	••••••••
Authentication	PAP ▾
MRU	1492
Obtain DNS Automatically	Enabled ▾
Default Route	Enabled ▾



Apply **Cancel**

#	PVC	VPI	VCI	Connection Type	
1	Pvc-0	8	35	ppp-0	 



Admin

Time

System

Firmware

Misc.

Test

Home

Advanced

Tools

Status

Help

Administrator Settings

There are only two accounts that can access this device Web-Management interface.

Administrator (The Login Name is "admin")

New Password

Confirm Password



Apply



Cancel



Admin

Time

System

Firmware

Misc.

Test

Home

Advanced

Tools

Status

Help

Time

Set the device system time.

Local Time

Jan/02/1970 20:02:07

Synchronize the modem's clock with:

- ☐ Automatic (Simple Network Time Protocol)
- ☐ Your computer's clock
- ☒ Manual (Enter your own settings)

Date

1970 Jan 2

Time

20 2 2

Time Zone

(GMT+00:00) Greenwich Mean

Daylight Saving

☐ Enable ☒ Disable



Apply



Cancel



Admin

Time

System

Firmware

Misc.

Test

Home

Advanced

Tools

Status

Help

System Settings

The current system settings can be saved as a file onto the local hard drive.

Save Settings To Local Hard Drive

Save

Load Settings From Local Hard Drive

Browse...

Load

Restore To Factory Default Settings

Restore



Admin

Time

System

Firmware

Misc.

Test

Home

Advanced

Tools

Status

Help

Firmware Upgrade

There may be new firmware for your device to improve functionality and performance. To upgrade the firmware, locate the upgrade file on the local hard drive with the Browse button. Once you have found the file to be used, click the Apply button below to start the firmware upgrade.

Current Firmware Version: R2.01.B9.AU(030917a/Y1.21.1)

Browse...



Apply



Cancel



Admin

Time

System

Firmware

Misc.

Test

Home

Advanced

Tools

Status

Help

Miscellaneous Configuration

These are additional tools and features of the device.

Ping Test

Ping IP Address **Ping**

Ping Result:

Connections

IGMP over Ethernet

☒ Disabled ☐ Enabled

Save and Reboot

Settings need to be saved to Flash and the system needs to be rebooted for changes to take effect.

Save and Reboot



Apply



Cancel



Admin

Time

System

Firmware

Misc.

Test

Home

Advanced

Tools

Status

Help

Diagnostic Test

The diagnostics feature executes a series of test of your system software and hardware connections. Use the feature when working with your ISP to troubleshoot problems.

Virtual Circuits:

This Page is used for performing diagnostics on the system.

Testing Connectivity to modem

Testing Ethernet connection	UNKNOWN
-----------------------------	---------

Testing ADSL Connection

Testing ADSL line for sync	UNKNOWN
----------------------------	---------

Testing Circuit for Network Connection

Testing Ethernet connection to ATM	UNKNOWN
------------------------------------	---------

Testing ATM OAM segment ping	UNKNOWN
------------------------------	---------

Testing ATM OAM end to end ping	UNKNOWN
---------------------------------	---------

Testing PPPoE server connectivity	UNKNOWN
-----------------------------------	---------

Testing PPPoE server session	UNKNOWN
------------------------------	---------

Testing authentication with server	UNKNOWN
------------------------------------	---------

Validating assigned IP address 0.0.0.0	UNKNOWN
--	---------

Testing Internet Connectivity

Ping default gateway 0.0.0.0	UNKNOWN
------------------------------	---------

Ping Primary Domain Name Server	UNKNOWN
---------------------------------	---------

Query DNS for www.dlink.com	UNKNOWN
-----------------------------	---------

Ping www.dlink.com	UNKNOWN
--------------------	---------



Device Info

Log

Traffic

ADSL

Home

Advanced

Tools

Status

Help

Device Information

Firmware Version: R2.01.B9.AU(030917a/Y1.21.1)

LAN -Ethernet

MAC Address 00:0D:88:6E:25:C9
IP Address 192.168.1.1
Subnet Mask 255.255.255.0
DHCP Server Disabled
NAT Enabled

WAN

Virtual Circuit PVC-0
Connection Status  Disconnected

Connect

IP Address -
Subnet Mask -
Default Gateway -
DNS Server Enabled


Cancel



Device Info

Log

Traffic

ADSL

Home

Advanced

Tools

Status

Help

View Log

View Log displays the activities occurring on the device. Click on Log Settings for advance features.

[First](#) [Last](#) [Previous](#) [Next](#) [Clear Log](#) [Save Log](#)

page 1 of 1

Log Information

Thu Jan 01 00:11:01 1970 : STATUS ALARM : System Up



Device Info

Log

Traffic

ADSL

Home

Advanced

Tools

Status

Help

Traffic Statistics

Traffic Statistics display Receive and Transmit packets passing through the device.

Choose an interface to view your network status:

- ☒ Ethernet Display Receive and Transmit packets through Ethernet.
☐ ADSL Display Receive and Transmit packets through ADSL.

Refresh

Reset

Transmit

Align Error Count	0
Single Collisn Frame Count	0
SQE Test Errors Count	0
Late Collisn Count	0
Internal MAC Rx Errs count	0
Carrier Sense Errs count	0
Tx count	15301
Control Pause count	0

Receive

FCS Error count	0
Two Collisn Frame count	0
Deferred Transaction count	0
Excess Collisn count	0
Internal MAC Tx Errs count	0
Frame Too Long count	0
Rx count	145350
Total Collisn count	0



Device Info

Log

Traffic

ADSL

Home

Advanced

Tools

Status

Help

ADSL Status

ADSL status shows the ADSL physical layer status.

ADSL Firmware Version: Y1.21.1

Line State:  Startup Handshake

Modulation: G.dmt

Annex Mode: ANNEX A

Local/Remote Tx Power: 0.0 dB / 0.0 dB

Item	Downstream	Upstream	Unit
SNR Margin	0.0	0.0	dB
Line Attenuation	0.5	0.5	dB
Loss of Signal	0	0	
CRC Errors	0	0	
Data Rate	0	0	Kbps
Latency	NA	NA	



Cancel



Menu

Home

Advanced

Tools

Status

Help

Home

- [Wizard](#)
- [WAN](#)
- [LAN](#)
- [DHCP](#)
- [DNS](#)

Advanced

- [Virtual Server](#)
- [Filters](#)
- [Routing](#)
- [DMZ](#)
- [Firewall](#)
- [RIP](#)
- [PPP](#)
- [ADSL](#)
- [ATM VCC](#)

Tools

- [Admin](#)
- [Time](#)
- [System](#)
- [Firmware](#)
- [Misc.](#)
- [Test](#)

Status

- [Device Info.](#)
- [Log](#)
- [Statistics](#)
- [ADSL Status](#)