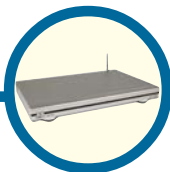


D-Link® Quick Installation Guide

This product complies with current
UPnP AV and Microsoft
PlaysForSure™ standards.



DSM-320
media lounge
Entertainment Network
Wireless Media Player

Before You Begin

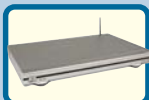
You will need the following:

- Windows XP/2000/Me/98SE, 500MHz or above based computer with a minimum of 128MB RAM, a CD-ROM drive, 20MB of available hard drive space and a wireless or Ethernet network.

Check Your Package Contents

These are the items included with your purchase:

If any of the below items are missing, please contact your reseller.



DSM-320 Wireless Media Player



Installation CD (Contains D-Link® Media Server Software, Quick Installation Guide, and Manual)



Antenna



Ethernet (CAT 5 UTP/Straight Through) Cable



Standard Composite RCA Audio/Video Cable



S-Video Cable



Remote Control with Batteries

1

Installing the D-Link® Media Server Software

Install the D-Link® Media Server Software on each PC that contains audio, video, or photo files you wish to use with the DSM-320.

Follow the steps in this section to install the software.

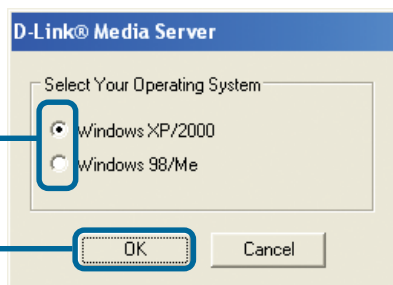
Insert the **DSM-320 CD-ROM** into the CD-ROM drive and the following screen will appear.

Click on **D-Link® Media Server Installer**

If the screen on the right does not appear, go to **My Computer** and double-click on the **CD-ROM drive**. The screen at right will appear.

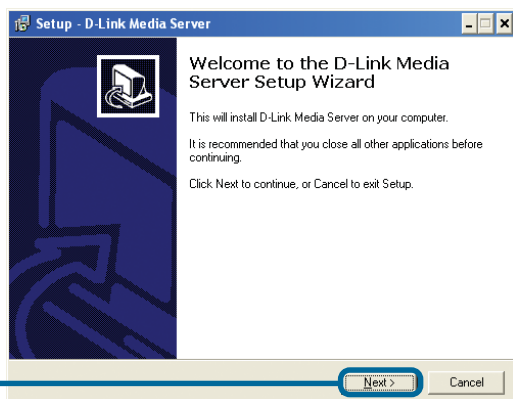


Select the appropriate operating system and click **OK**



The D-Link® Media Server Setup Wizard will appear.

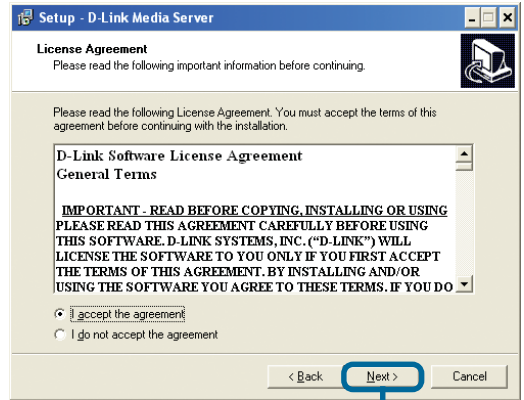
Click **Next**



1

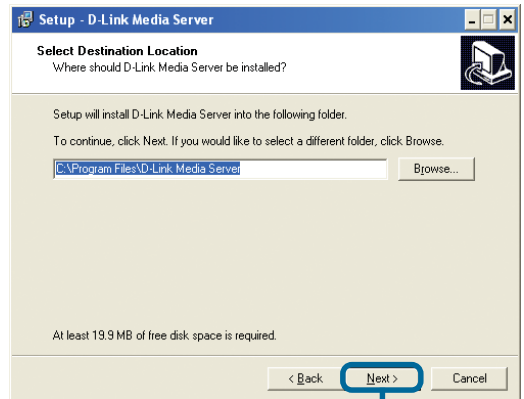
Installing the D-Link® Media Server Software (continued)

The D-Link license agreement screen appears.



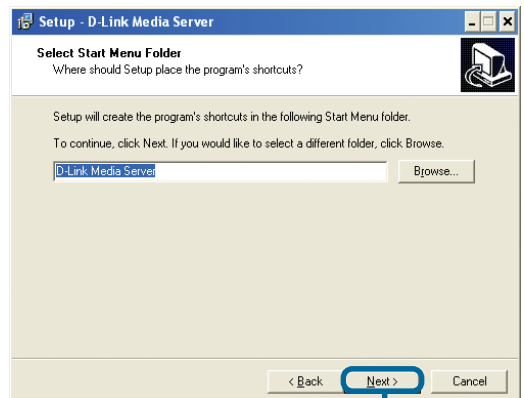
Click **Next**

Choose a Destination location or accept the default location. This is where the D-Link Media Server software will be copied to on your system.



Click **Next**

Choose a start menu folder or accept the default location.



Click **Next**

1

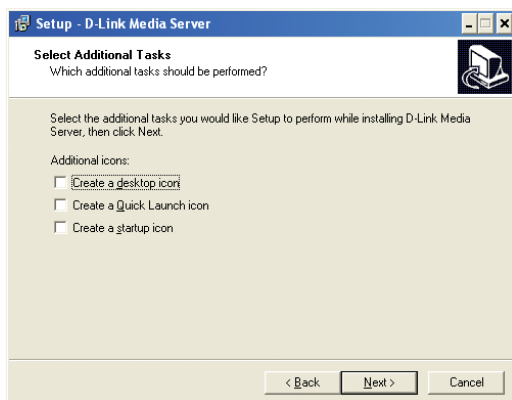
Installing the D-Link® Media Server Software (continued)

Select the icons you want created.

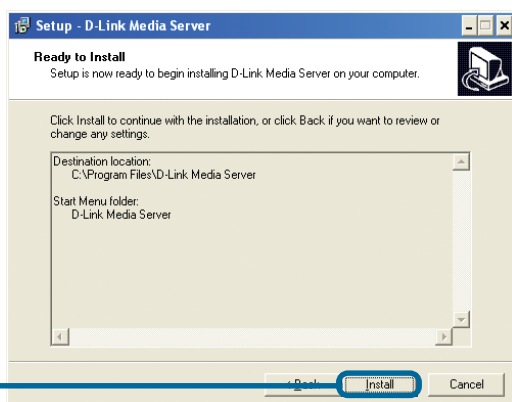
Select **Create a desktop icon** to access the program from your desktop.

Select **Create a Quick Launch icon** to access the program from your taskbar.

Select **Create a startup icon** so the program launches on startup.

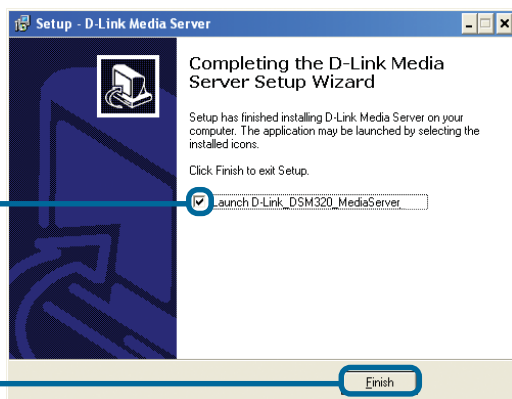


The necessary software will be copied to the specified locations on your computer.



Click **Install**

Check **Launch D-Link® Media Server**

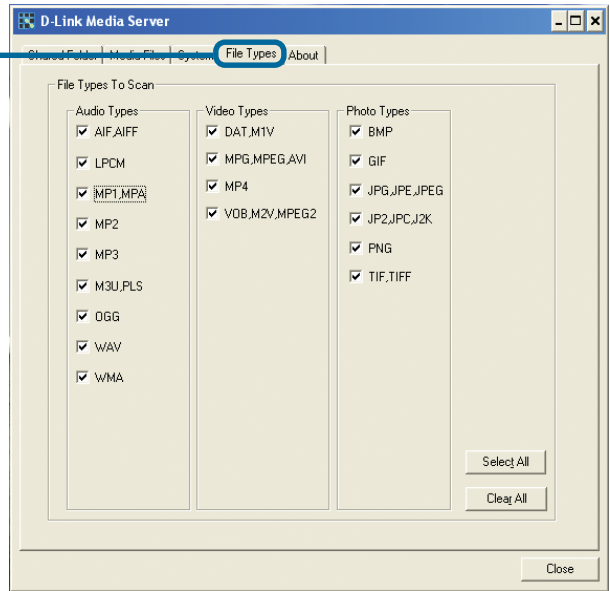


Click **Finish**

2

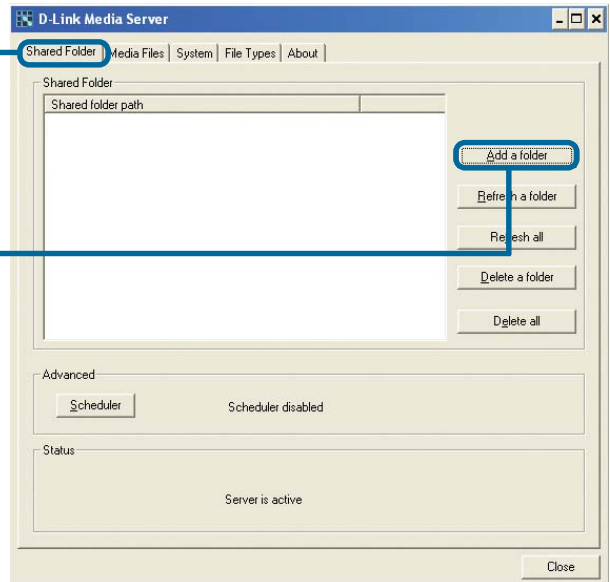
Configuring the D-Link® Media Server Software

The **File Types** tab is where you select the types of audio, video, and photo files that you want to share.



The **Shared Folders** tab is where you select the folders that contain your audio, video, and photo files.

Click **Add a folder**

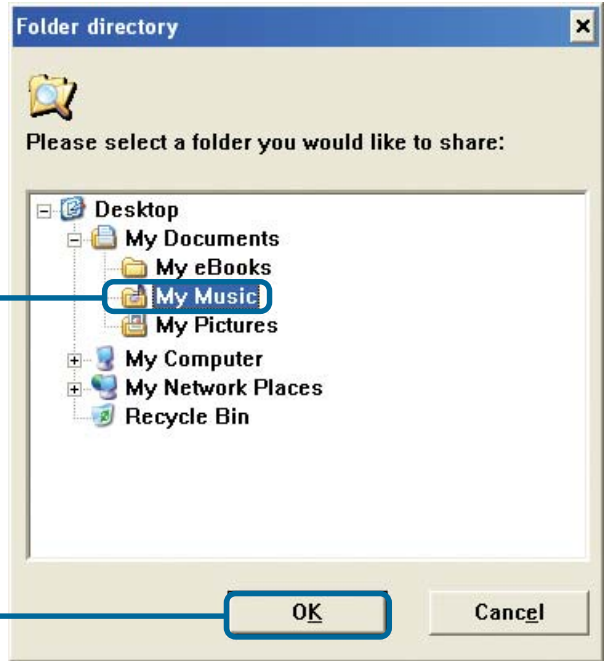


2

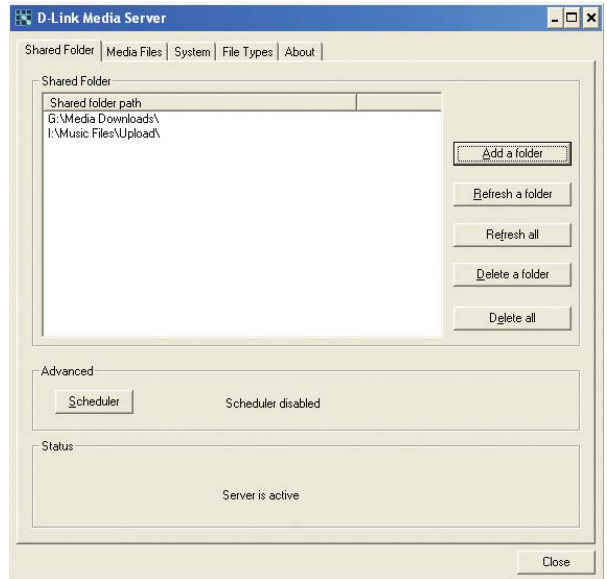
Configuring the D-Link® Media Server Software (continued)

Select the folder containing the files you wish to share.

Click **OK**



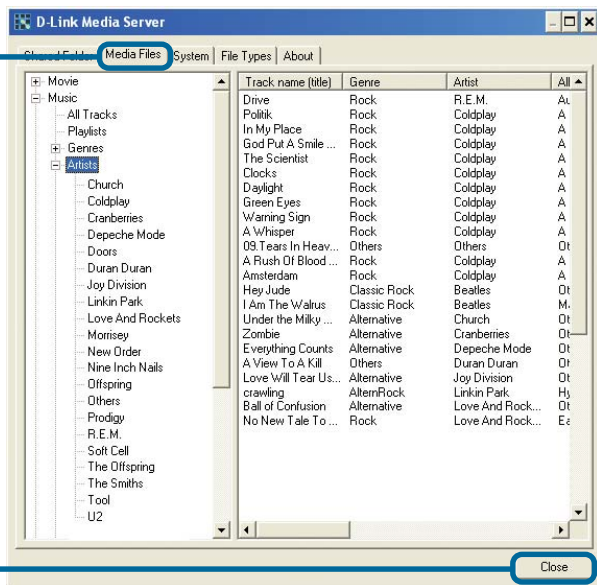
Repeat the steps until all of the folders containing audio, video, and photos you want to share have been added.



2

Configuring the D-Link® Media Server Software (continued)

The **Media Files** tab will show all your audio, video, and photo files as well as display important file information.



Click **Close**

3

Connecting the DSM-320

All audio, video, and networking connections are located on the rear panel of the DSM-320.

Video Connections

Be sure the PAL/NTSC switch is set to **NTSC** if you are located in the USA.



Select one of three ways to connect video to your DSM-320:

• Composite Video Connector

Plug the supplied yellow video cable into the DSM-320 and the matching opposite end of the cable to your television input.



• S-Video Connector

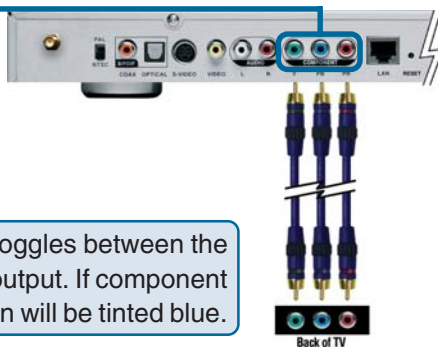
Plug the supplied S-Video cable into the S-Video connector and the opposite end into the S-Video connector on your television.



• Component Connectors

Match the color coded cables to the matching connectors on the DSM-320 and into the component video input of your television.

Note: This cable is not supplied.



The **VIDEO OUT** button on the remote control toggles between the composite/S-Video output and the component output. If component connectors are used but not selected, the screen will be tinted blue.

3

Connecting the DSM-320 (continued)

Audio Connections

The **AUDIO OUT** button on the remote control toggles between the composite audio output and the digital audio output (optical/coaxial).

Select one of three ways to connect audio to your DSM-320:

• Composite Audio

Plug the supplied red and white connectors into the color-coded matching jacks on the DSM-320.

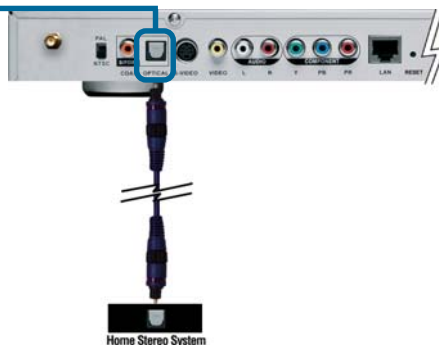
Plug the opposite ends to the matching jacks on your television or audio/video system.



• Optical Digital Audio

Connect an optical audio connector into the DSM-320 and the matching opposite end of the cable to the audio input of your audio system.

Note: This cable is not supplied.



• Coaxial Digital Audio

Connect a coaxial audio connector into the DSM-320 and the matching opposite end of the cable to the audio input of your audio system.

Note: This cable is not supplied.



3

Connecting the DSM-320 (continued)

Network Connections

Select one of two ways to connect a network to your DSM-320:

- **RJ-45 Ethernet Connector**

Connect the supplied Ethernet cable to the network cable connector, and attach the other end to the network.



- **Wireless Antenna**

Attach the supplied antenna by threading it onto the antenna connector. Be sure the antenna is secure and in an upright position.

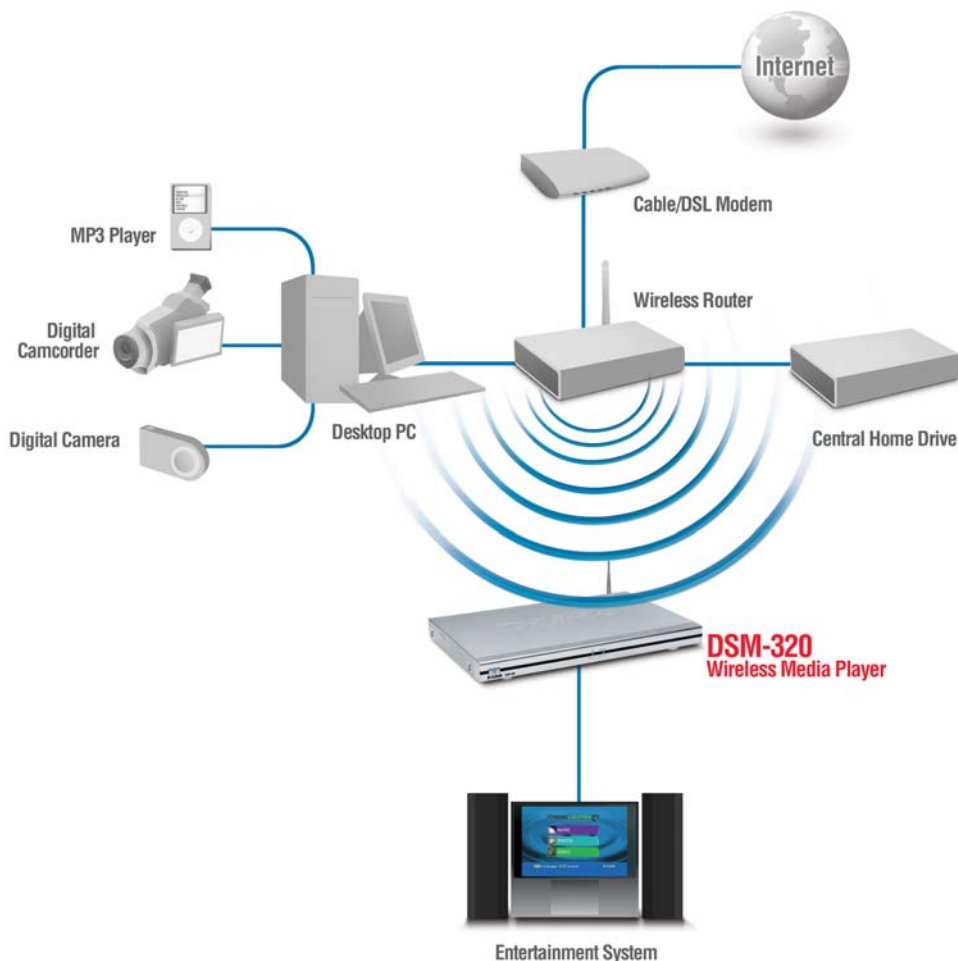


Note: You may have an Ethernet cable plugged into the unit and have the wireless antenna connected. Neither will interfere with the other, but only one network can be accessed at a time (wired or wireless). The network connection type is selected in the Setup Wizard and can be changed by going to the Setup Menu. To access the Setup Menu, press the SETUP button on the remote control.

3

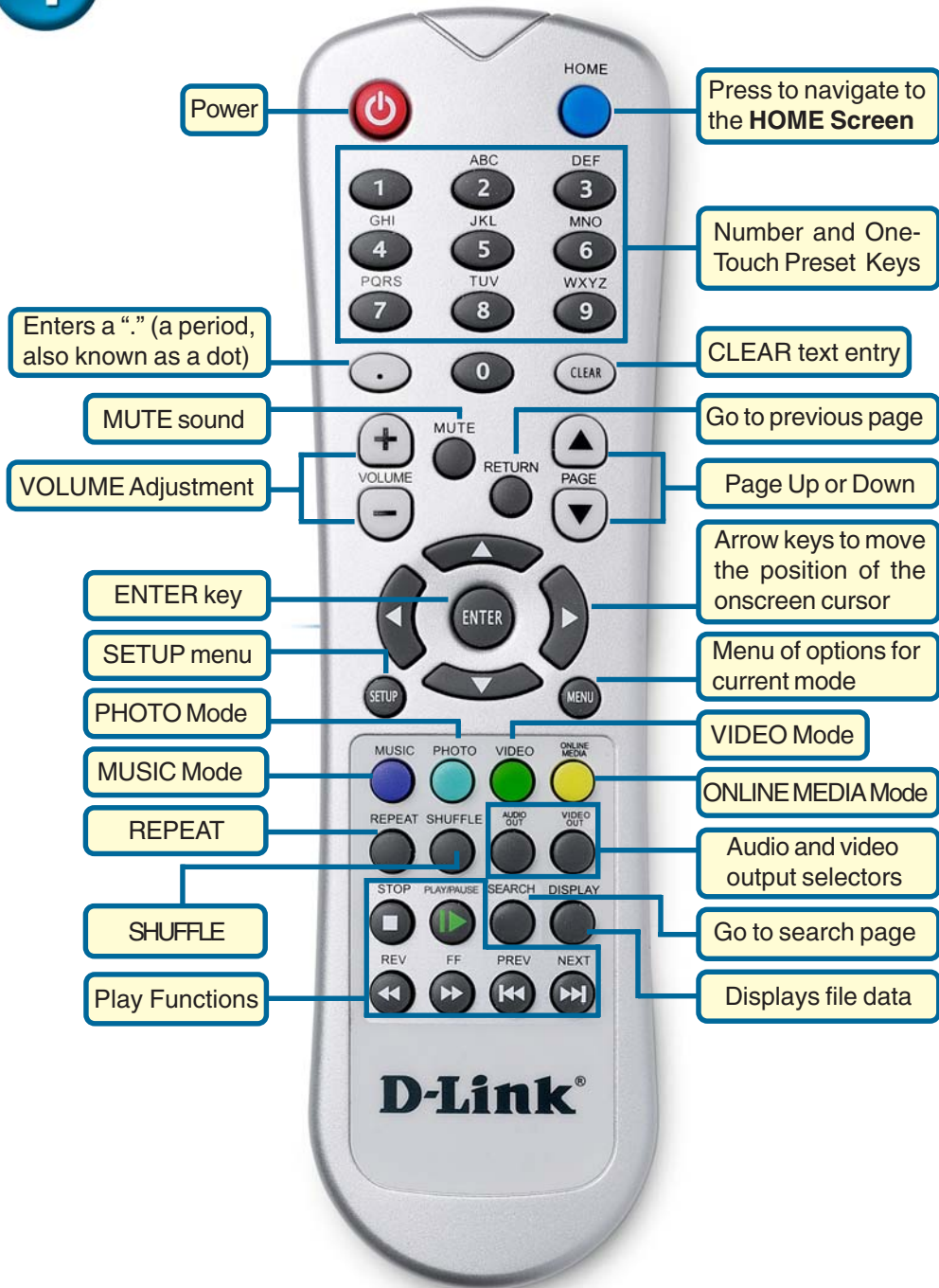
Connecting the DSM-320 (continued)

Below is a diagram displaying what your network might look like once all of the connections have been made to the MediaLounge™ DSM-320 Wireless Media Player.



4

Using the Remote Control



5

Using the On-Screen keyboard

Whenever you need to enter text, press **ENTER** on the remote and the on-screen keyboard will appear.



The keyboard is used for a variety of functions such as naming your DSM-320 and performing searches for music, photos or video. To use the keyboard, highlight a character with the **arrow** buttons on the remote control and press the **ENTER** button. Text can also be entered by using numbers 2-9 on the remote, just as you would on a cell phone. Highlight **ENTER** and press **ENTER** when you're finished entering text.

6

DSM-320 Setup Wizard

Upon initial startup, the DSM-320 displays the Setup Wizard. The Setup Wizard will guide you through the necessary steps for configuring the DSM-320.

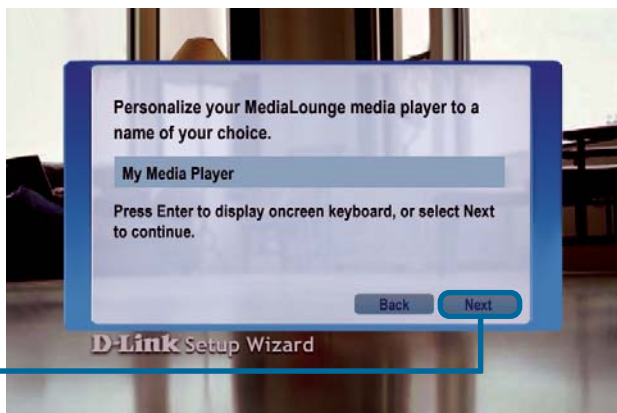


Click **Next** to begin the DSM-320 Setup Wizard

6

DSM-320 Setup Wizard (continued)

Type in a name of your choice or select the default setting.



Click **Next** to continue

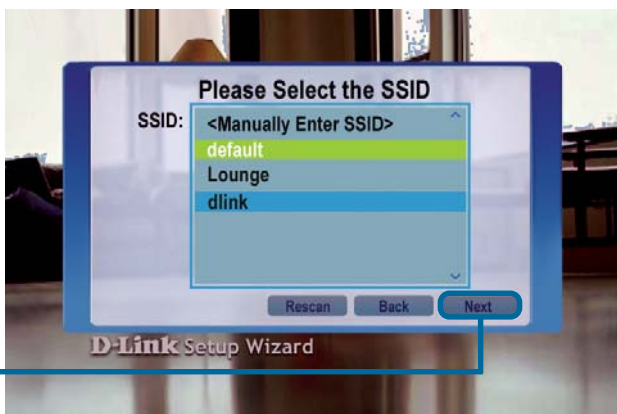
Select your network connection type.



If selecting **Wired**, skip to **Your Current Network Settings** on page 15.

Click **Next** to continue

If you are using a wireless network connection, **select the SSID** of the network.



Click **Next** to continue

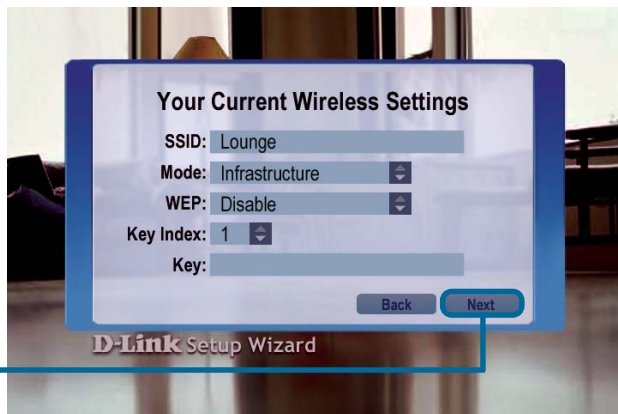
6

DSM-320 Setup Wizard (continued)

Your current wireless settings are displayed and can be changed at this point.

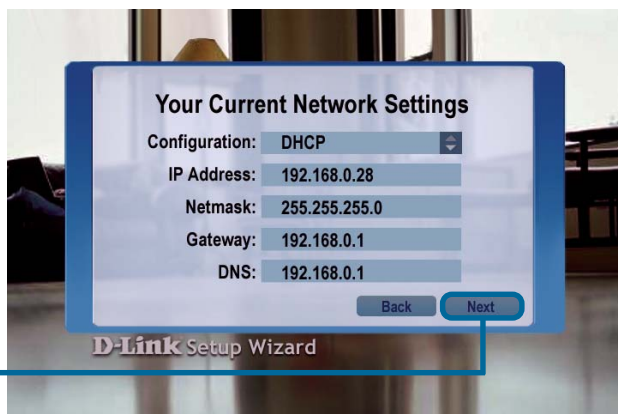
Keys can be entered in hex or ASCII format. See the User Manual located on the CD-ROM for details.

Click **Next** to continue



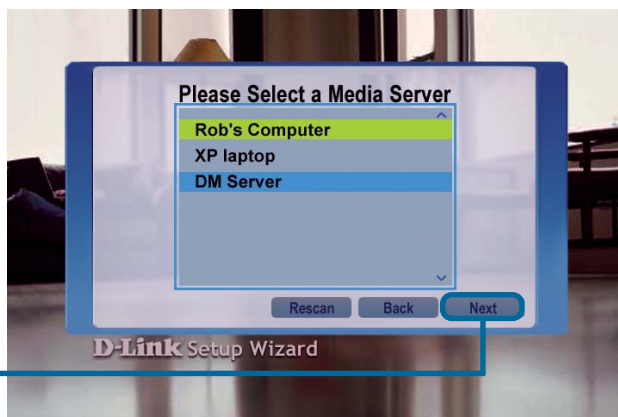
Your current network settings are displayed and can be changed at this point.

Click **Next** to continue



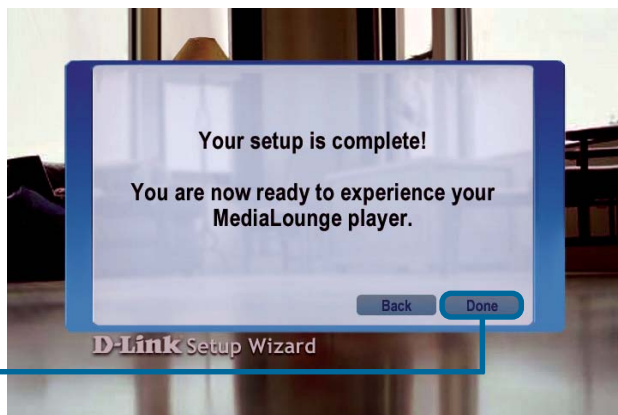
Select a Media Server from the list.

Click **Next** to continue



6

DSM-320 Setup Wizard (continued)



Your setup is complete!

For detailed usage instructions and information on supported file types, please refer to the User Manual that is located on the MediaLounge™ CD-ROM.

Your MediaLounge™ DSM-320 is now ready to stream music, photo, and video content for enjoyment on your home entertainment center.

From this home screen, you can access MUSIC, PHOTO, VIDEO, or ONLINE MEDIA. To jump directly to the home screen, press the **HOME** button on the upper right corner of the remote control.



If a D-Link Media Server is not detected, this home screen appears. The MY MEDIA button will initially display your server options (if available). Once you select a server, the available media will appear. To jump directly to the home screen, press the **HOME** button on the upper right corner of the remote control.



Notes

Notes

Notes

Technical Support

You can find software updates and user documentation on the D-Link website.

D-Link provides free technical support for customers within the United States and within Canada for the duration of the warranty period on this product.

U.S. and Canadian customers can contact D-Link Technical Support through our website, or by phone.

Tech Support for customers within the United States:

D-Link Technical Support over the Telephone:

(877) 453-5465

24 hours a day, seven days a week.

D-Link Technical Support over the Internet:

<http://support.dlink.com>

[email:support@dlink.com](mailto:support@dlink.com)

Tech Support for customers within Canada:

D-Link Technical Support over the Telephone:

(800) 361-5265

Monday to Friday 7:30am to 12:00am EST

D-Link Technical Support over the Internet:

<http://support.dlink.ca>

[email:support@dlink.ca](mailto:support@dlink.ca)

