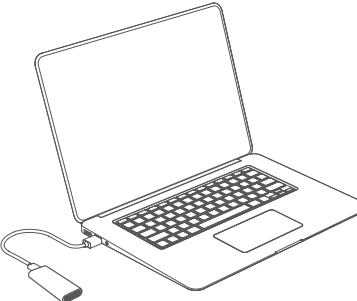
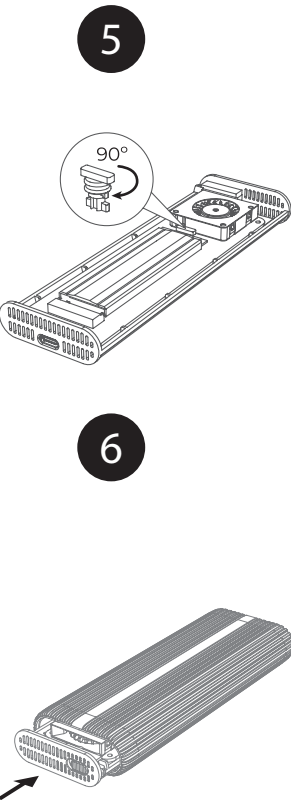
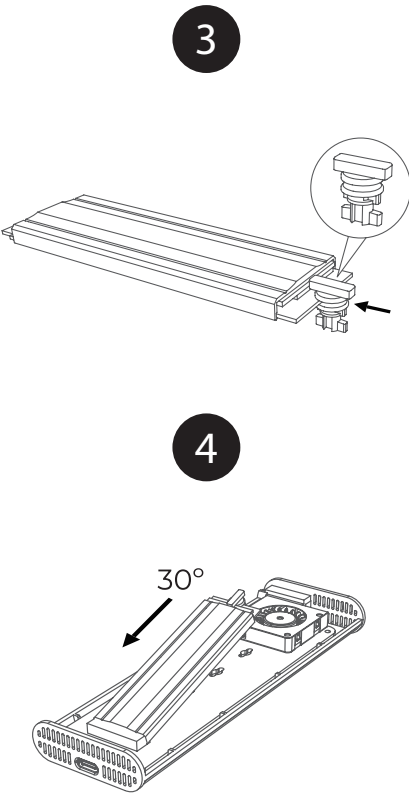
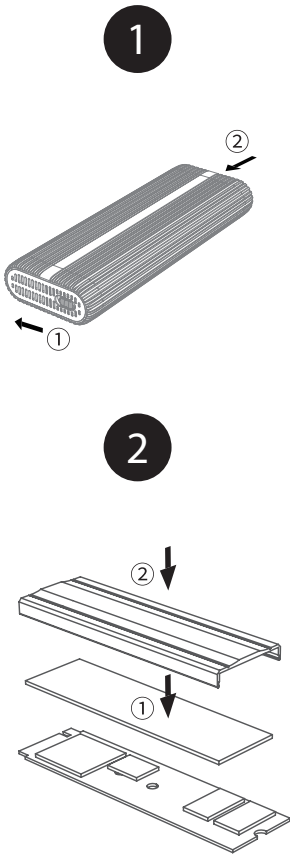


# USB 4.0 M.2 NVMe SSD Enclosure

## Quick Start Guide



DSP-411



### FCC Warning

This device complies with Part 15 of the FCC Rules. Operation is subject to the following two conditions:  
(1) This device may not cause harmful interference, and  
(2) this device must accept any interference received, including interference that may cause undesired operation.

- <https://support.dlink.com>
- <https://dlink.com/en/contact-us>