

# D-Link®

## Quick Installation Guide

This product can be set up using any current web browser, i.e., Internet Explorer 6 or Netscape Navigator 6.2.3.



## DVG-2001S

### VoIP Terminal Adapter

## Before You Begin

1. If you purchased this VoIP Terminal Adapter to share your high-speed Internet connection with other computers, you must have an established Internet account from an Internet Service Provider (ISP).
2. It's best to use the same computer that is connected to your router for configuring the DVG-2001S VoIP Terminal Adapter. The DVG-2001S acts as a DHCP Client and will be assigned all the necessary IP address information from your network. See the Quick Installation Guide or the Manual on the CD-ROM for setting each network adapter to automatically obtain an IP address.

## Check Your Package Contents



- **DVG-2001S**



- **CD-ROM**  
containing Manual and Warranty



- **Ethernet Cable**  
(CAT5 UTP Straight-Through)



- **12V, 1.2A**  
**Power Adapter**

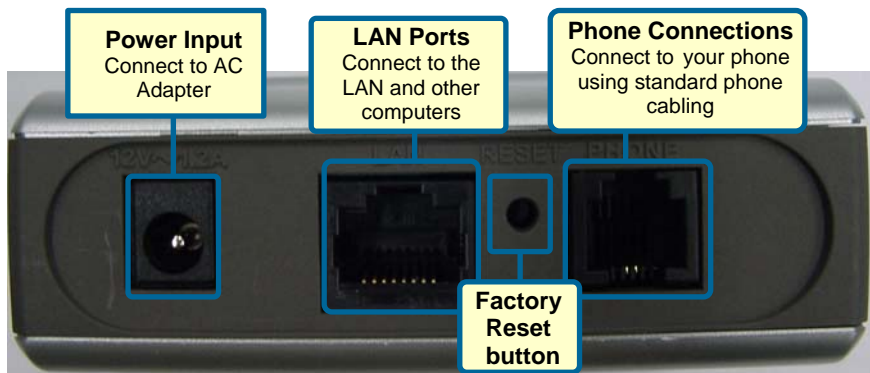


Using a power adapter with a different voltage rating will damage and void the warranty for this product.

*If any of the above items is missing, please contact your reseller.*

# 1

## Connecting the VoIP Terminal Adapter to your Computer



- A.** First, connect the power adapter to the power input at the back panel of the DVG-2001S and then plug the other end of the power adapter to a wall outlet or power strip. On the front of the device, the Power LED will turn ON to indicate proper operation.
- B.** Insert one end of the Ethernet cable into the Ethernet (LAN) port on the back panel of the DVG-2001S and the other end of the cable to an Ethernet Adapter or available Ethernet port on your computer.
- C.** Insert a telephone cable into the Phone port, then connect the cable to your telephone line.
- D.** Check the LED display on the front of the Router to confirm that the connections have been made.

# 2

## Configure IP Settings

To connect to the network, make sure the network adapter in your computer is configured properly. Here's how to assign a static IP address to your PC.

# For Microsoft Windows XP

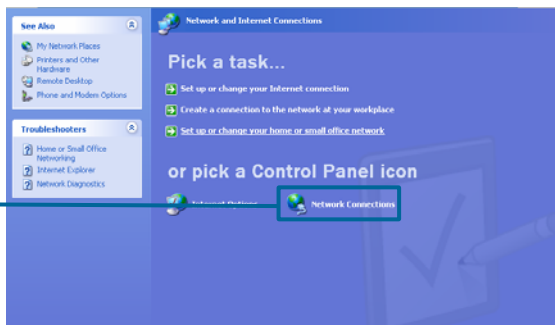
Go to **Start** > click **Control Panel** > click on the **Network and Internet Connections** icon

Click on **Network and Internet Connections**



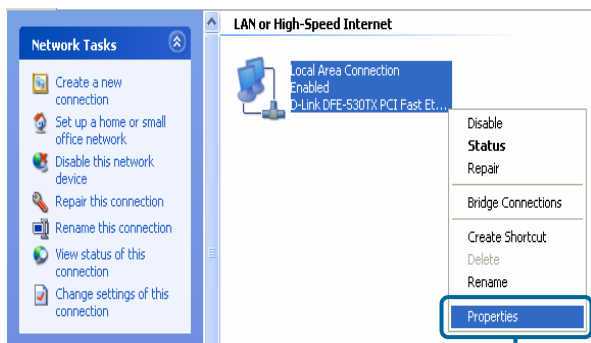
Click on the **Network Connections** icon

Click on **Network Connections**



Right-click the Local Area Connection icon, and then select **Properties**.

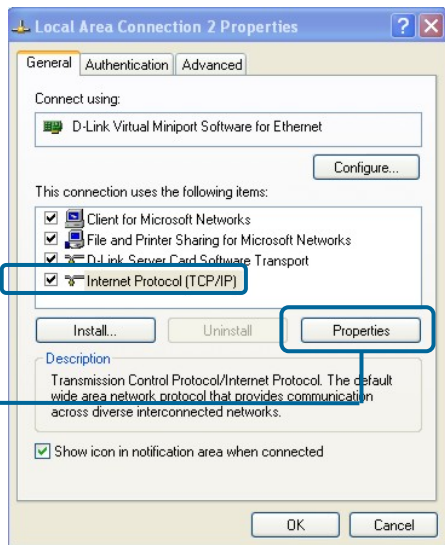
Select **Properties**



The dialog box displays a list of currently installed network items.

Click **Internet Protocol (TCP/IP)**

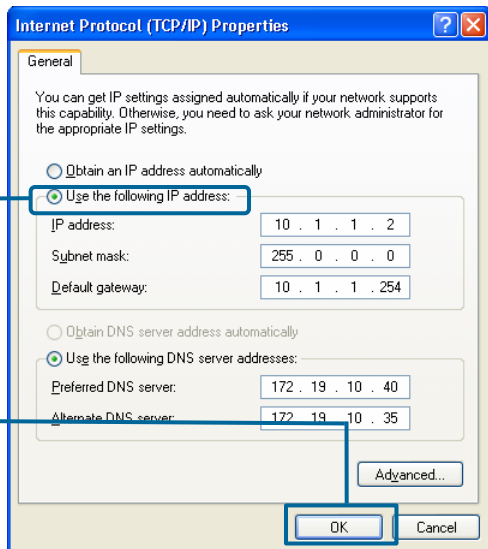
Click **Properties**



Make the choice to get the IP settings assigned manually.

Select **Use the following IP address**

Click **OK**

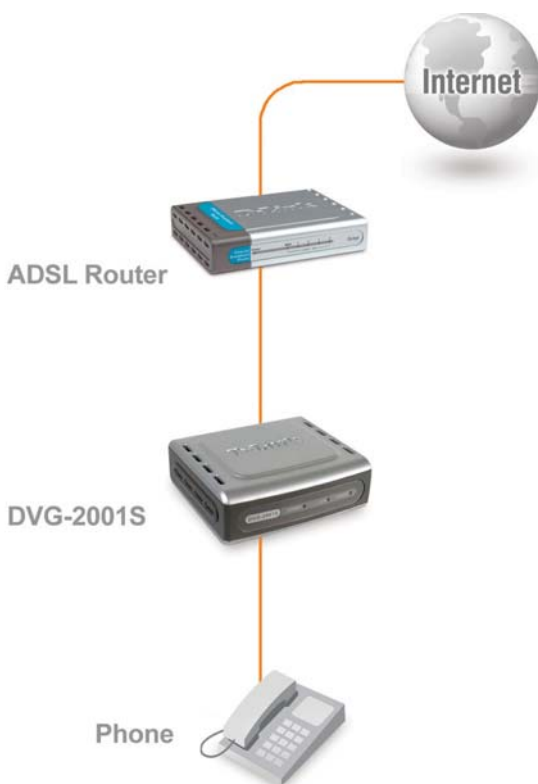


# 3

## Connecting Additional Computers to the DVG-2001S VoIP Terminal Adapter

Using additional Ethernet (CAT5 UTP) cables, connect your Ethernet-equipped computers to the LAN port on the back panel of the DVG-2001S.

When you have completed the steps in this **Quick Installation Guide**, your connected network should look similar to this:



# 4

## Initial Web Configuration

Open your Web browser and type **http://10.1.1.1** into the URL address box. Press **Enter** or **Return**.

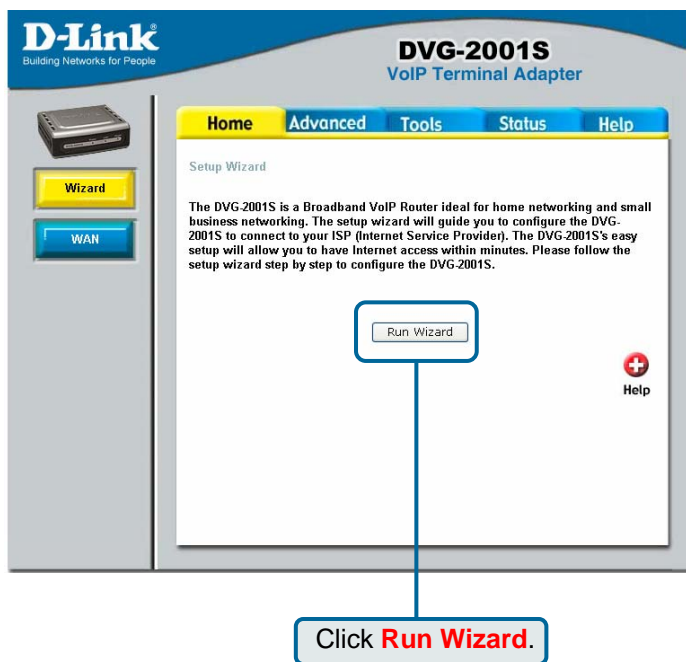


The login dialog box appears:

When you first log in, the User name is **admin** and the Password is also **admin**. These may be changed later.



The **Home** window appears:



Clicking a hyperlink on the menu on the upper left side of the window brings up a detailed configuration window.

# 5

## Configuring the WAN (Internet) Connection

Click **Run Wizard** on the menu above to view the following **Wizard** window:



Click the **Next** button.

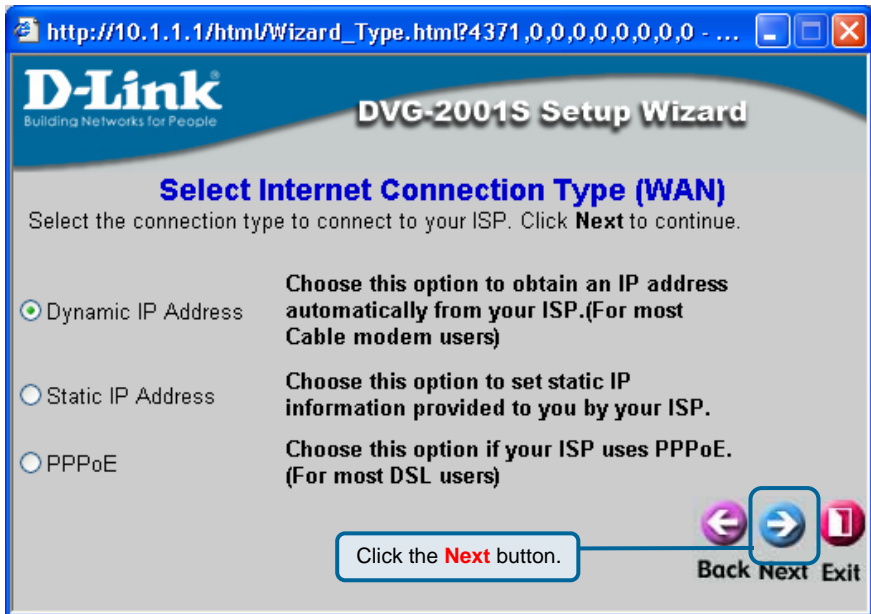




Enter a new password for the DVG-2001S in the **Password** field.

Confirm the new password by entering it again into the **Verify Password** field.

Click the **Next** button to continue.



The window above allows you to select between the three most common ways to connect to your ISP's WAN (Internet).

Select **Dynamic IP Address** if your ISP automatically assigns you an IP address. This is the most common way of connecting the DVG-2001S to another modem, such as a Cable modem.

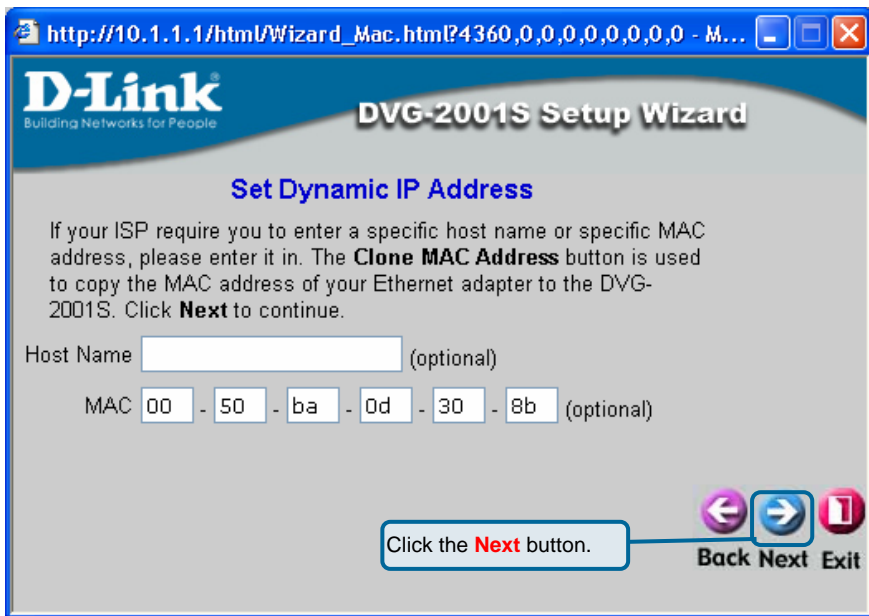
Select **Static IP Address** if your ISP provided you with IP address information that will not change.

Select **PPPoE** if your ISP uses the Point-to-Point over Ethernet (PPPoE) protocol to make the connection. This is the most common connection type for DSL users.

Click the **Next** button to continue.

# Dynamic IP Address

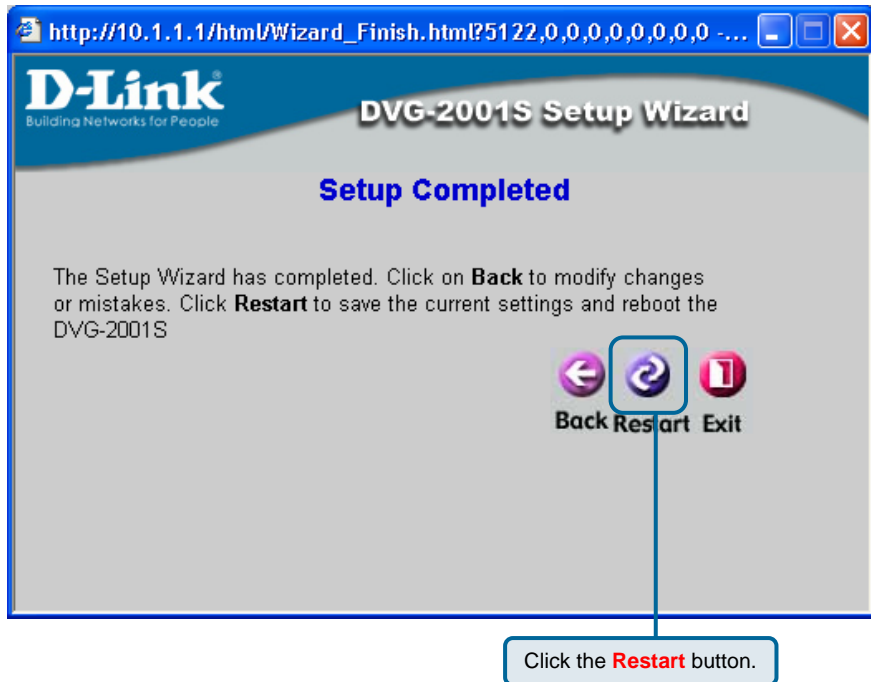
Select **Dynamic IP Address** if your ISP automatically assigns you an IP address. This is the most common way of connecting the DVG-2001S to another modem, such as a Cable modem.



The screenshot shows a web browser window with the address bar displaying `http://10.1.1.1/html/Wizard_Mac.html?4360,0,0,0,0,0,0,0,0 - M...`. The page title is "D-Link Building Networks for People" and "DVG-2001S Setup Wizard". The main heading is "Set Dynamic IP Address". Below this, a paragraph explains that if the ISP requires a specific host name or MAC address, it should be entered. It mentions a "Clone MAC Address" button (not visible in this specific step) and instructs the user to click "Next" to continue. There are two input fields: "Host Name" with a text box and "(optional)" label, and "MAC" with six individual boxes containing "00", "50", "ba", "0d", "30", and "8b", followed by "(optional)". At the bottom right, there are three buttons: "Back" (left arrow), "Next" (right arrow), and "Exit" (red square with 'X'). A callout box points to the "Next" button with the text "Click the **Next** button."

Enter the host name, if required, in the **Host Name** field.

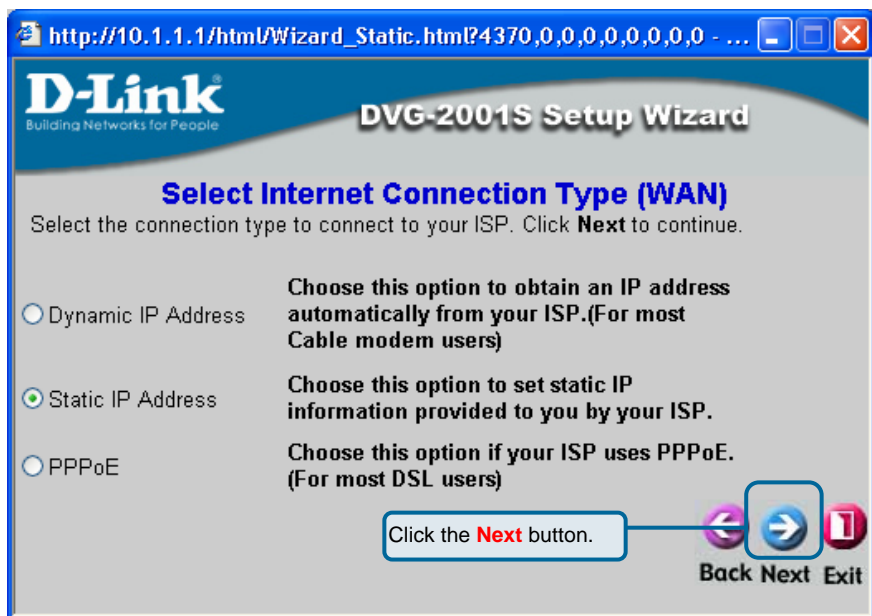
Click the **Next** button to continue.



Click the **Restart** button to save the settings and restart the router.

# Static IP Address

Select **Static IP Address** if your ISP provided you with IP address information that will not change.



Click the **Next** button to continue.

http://10.1.1.1/html/Wizard\_IpAddr.html?4361,0,0,0,0,0,0,0,0 ...

**D-Link**  
Building Networks for People

**DVG-2001S Setup Wizard**

**Set Static IP Address**

Enter in the static IP information provided to you by your ISP. Click **Next** to continue.

WAN IP Address	10	1	1	1
WAN Subnet Mask	255	0	0	0
WAN Gateway Address	0	0	0	0
Primary DNS Address	0	0	0	0
Secondary DNS Address	0	0	0	0

(optional)

Click the **Next** button.

Back Next Exit

You will need your ISP to provide you with the IP address information about your Internet account, if your ISP statically assigns an IP address to you.

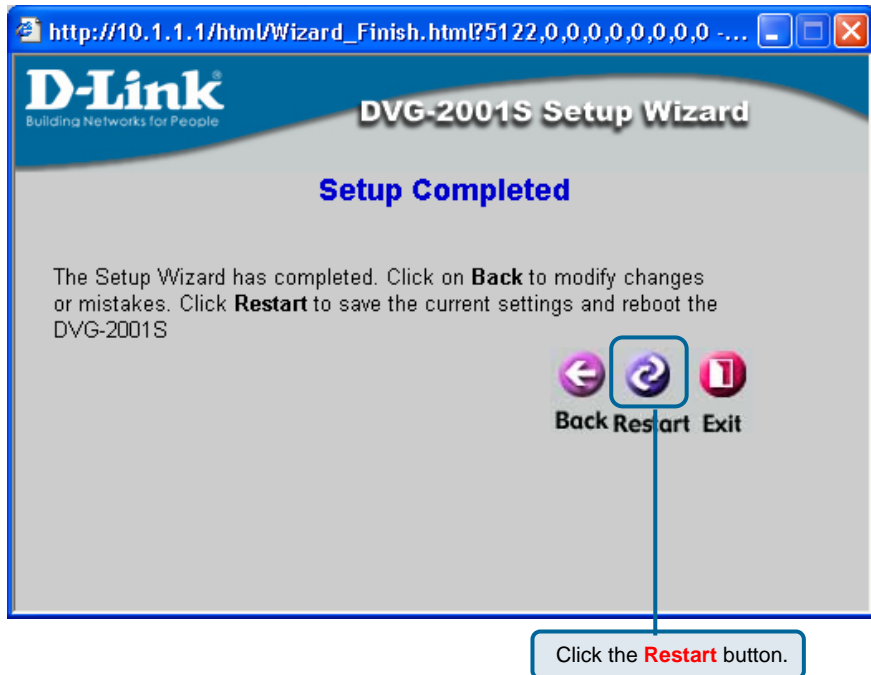
Enter the provided IP address in the **WAN IP Address** field.

Enter the corresponding subnet mask in the **WAN Subnet Mask** field.

Enter the IP address of your ISP's gateway in the **WAN Gateway Address** field.

Enter the IP address of a Domain Name Server (DNS) in the **Primary DNS Address** field.

Click the **Next** button to continue.



Click the **Restart** button to save the settings and restart the router.





http://10.1.1.1/html/Wizard\_PPPOESet.html?4376,0,0,0,0,0,0,0,...

**D-Link**  
Building Networks for People

**DVG-2001S Setup Wizard**

**Set PPPoE**

The service name is optional but may be required by your ISP. Click **Next** to continue.

User Name

Password

Retype Password

Click the **Next** button.

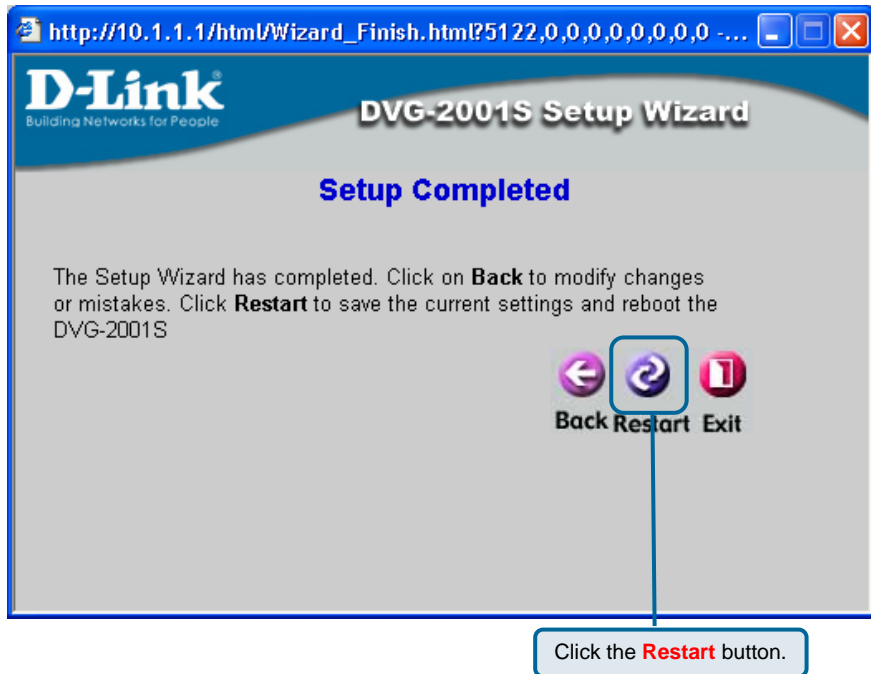
Back Next Exit

Enter the User Name for your account in the **User Name** field.

Enter the Password for your account in the **Password** field.

Confirm the Password by entering it again in the **Retype Password** field.

Click the **Next** button to continue.



Click the **Restart** button to save the settings and restart the router.

# Technical Support

You can find software updates and user documentation on the D-Link website.

**D-Link Australia**  
**1 Giffnock Avenue, North Ryde,**  
**NSW 2113**  
**Sydney, Australia**

**TEL:** 61-2-8899-1800

**FAX:** 61-2-8899-1868

**Australia:** 1300-766-868

**New Zealand:** 0800-900-900

**URL:**

[www.dlink.com.au](http://www.dlink.com.au)

[www.dlink.co.nz](http://www.dlink.co.nz)

**E-MAIL:**

[support@dlink.com.au](mailto:support@dlink.com.au)

[info@dlink.com.au](mailto:info@dlink.com.au)

**D-Link®**  
Building Networks for People