

Default IP address is 192.168.15.1

Username: admin


Password: admin



**D-Link®**  
Building Networks for People

# DVG-G1402S

## Wireless VoIP Router



**Wizard**

**Wireless**

**WAN**

**LAN**

**DHCP**


**Proxy DNS**

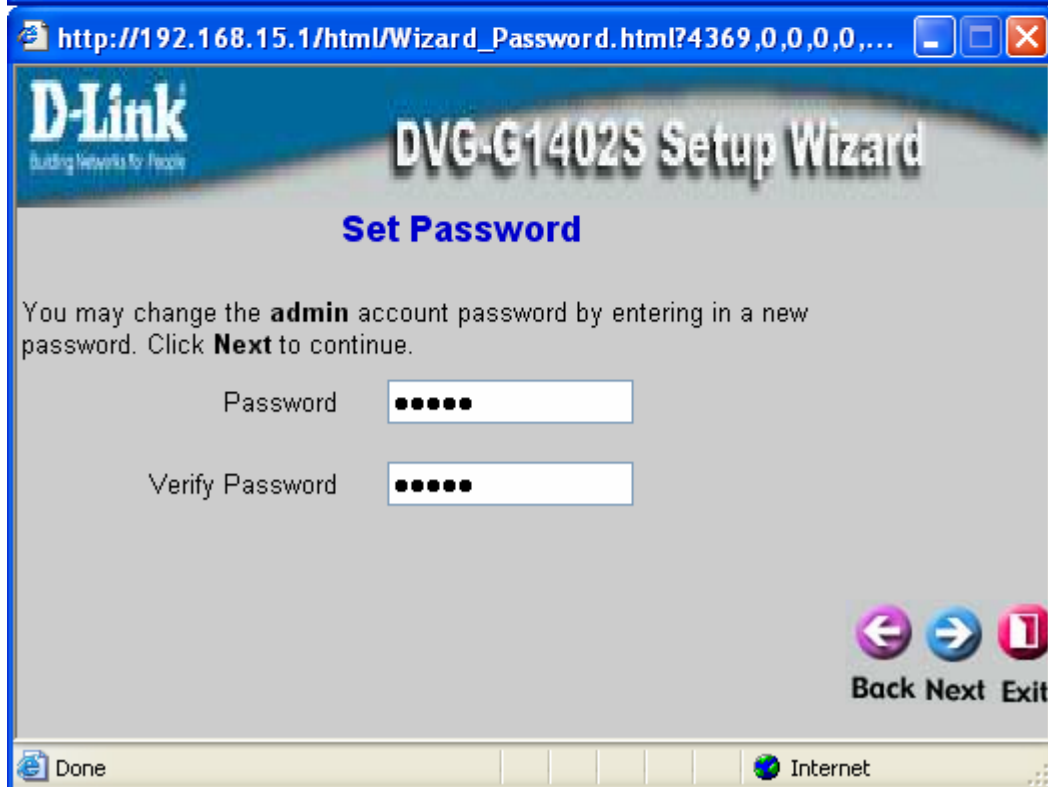
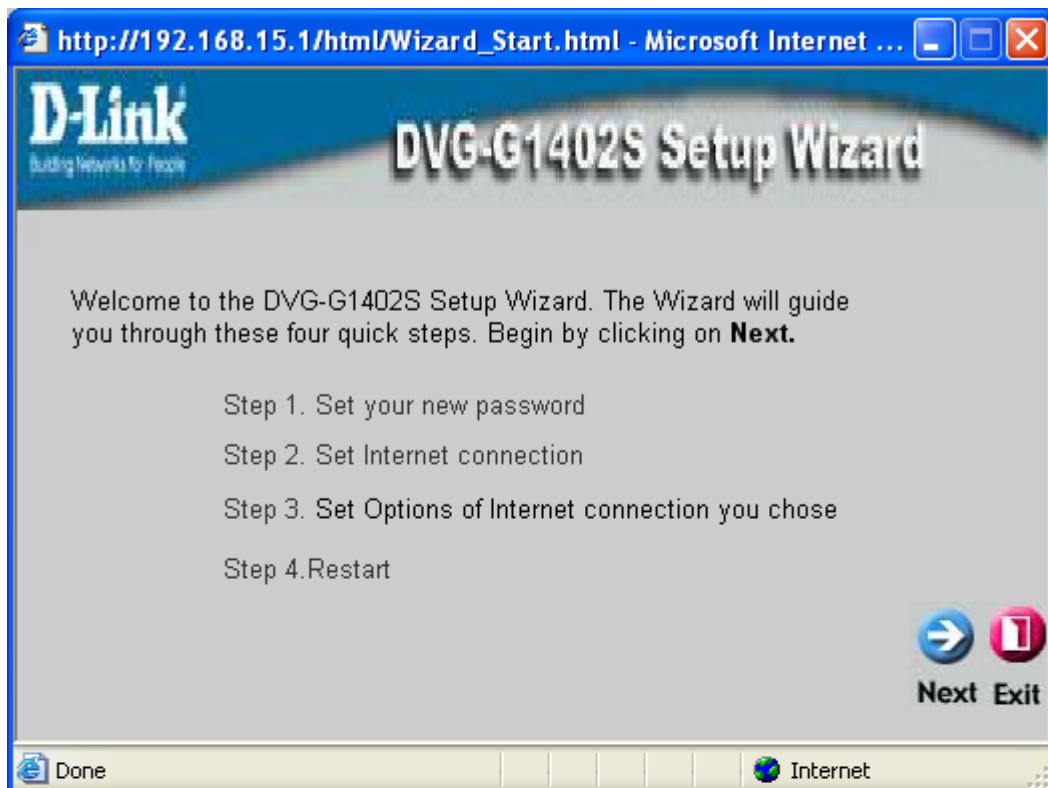
**Home** **Advanced** **Tools** **Status** **Help**

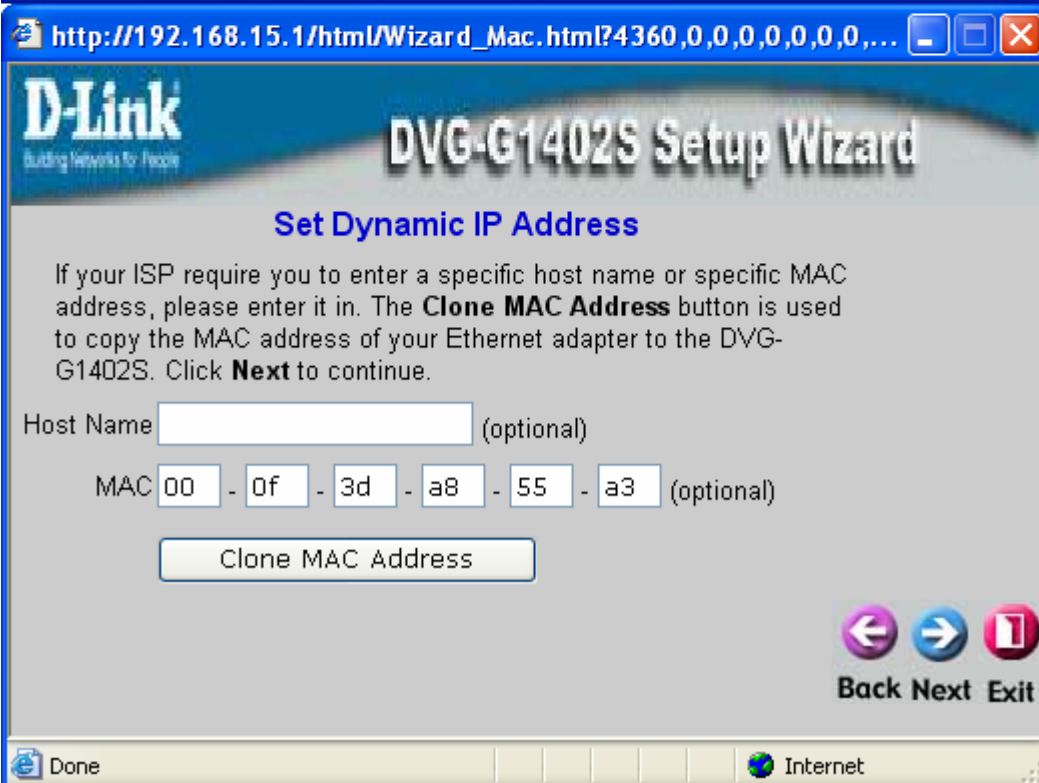
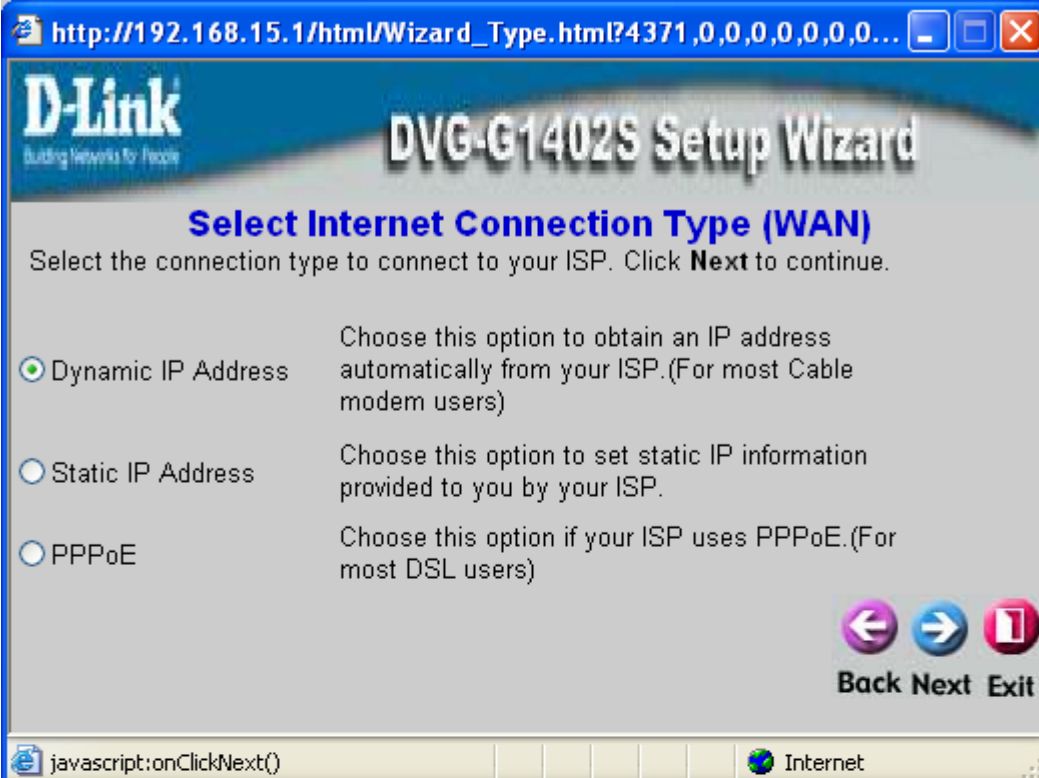
### Setup Wizard

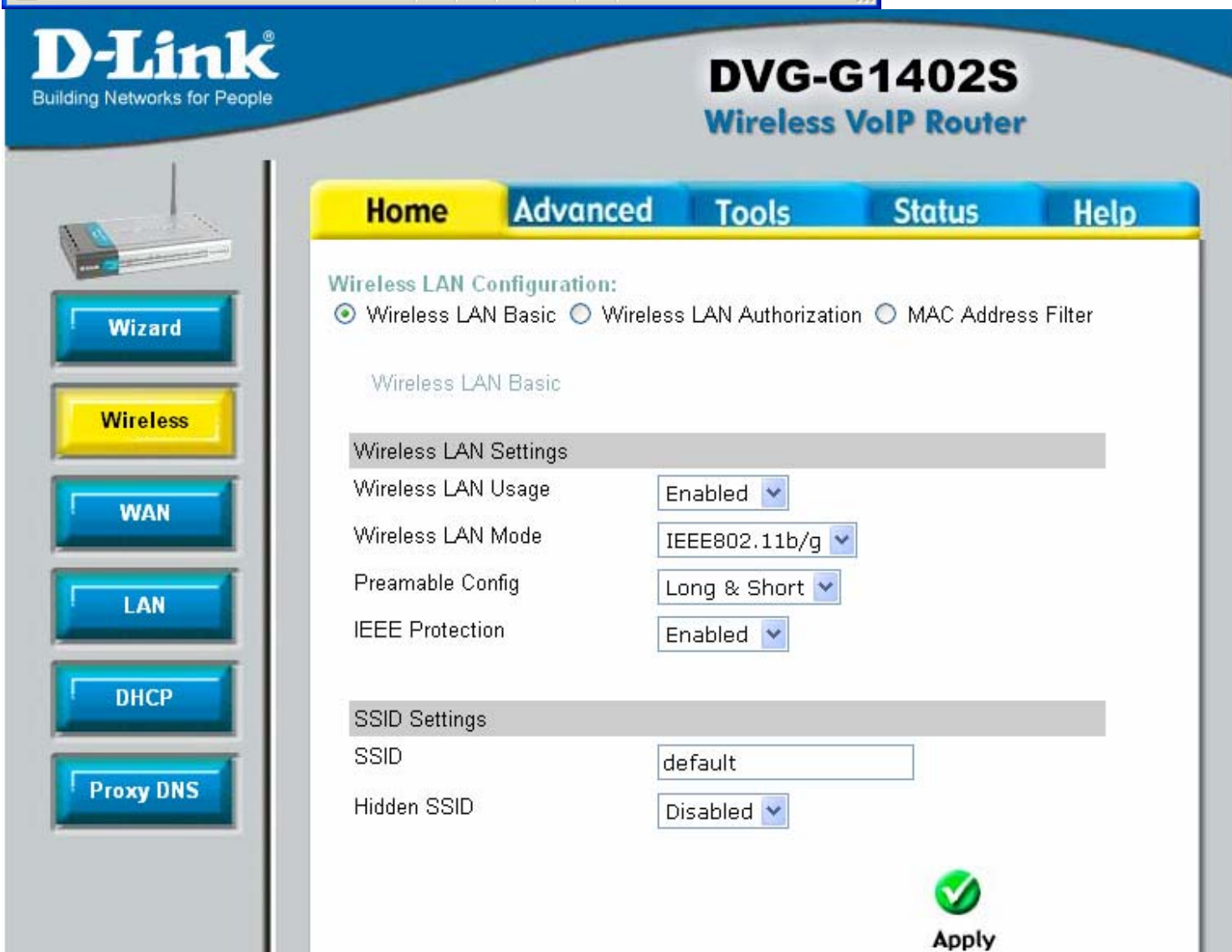
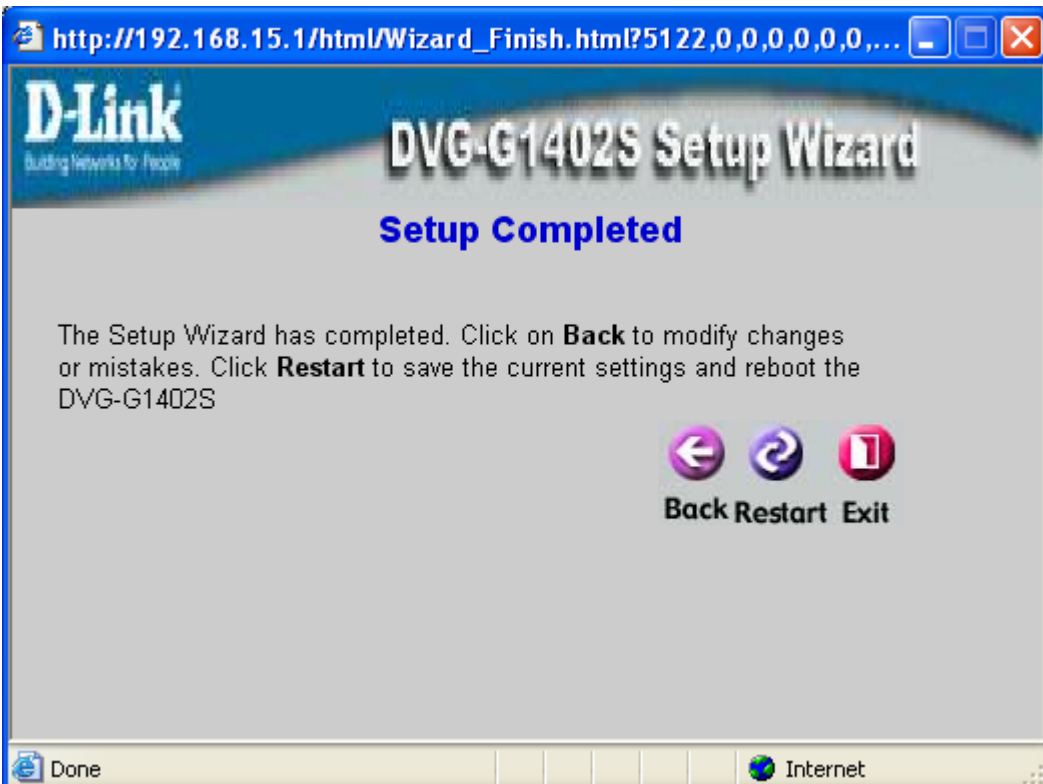
The DVG-G1402S is a Broadband VoIP Router ideal for home networking and small business networking. The setup wizard will guide you to configure the DVG-G1402S to connect to your ISP (Internet Service Provider). The DVG-G1402S's easy setup will allow you to have Internet access within minutes. Please follow the setup wizard step by step to configure the DVG-G1402S.

Run Wizard

  
**Help**







[Wizard](#)[Wireless](#)[WAN](#)[LAN](#)[DHCP](#)[Proxy DNS](#)[Wizard](#)[Wireless](#)[WAN](#)[LAN](#)[DHCP](#)[Proxy DNS](#)[Home](#)[Advanced](#)[Tools](#)[Status](#)[Help](#)

### Wireless LAN Configuration:

☐ Wireless LAN Basic ☒ Wireless LAN Authorization ☐ MAC Address Filter

#### Authorization Settings

Authorization Type ☒ No Auth ☐ WEP ☐ WPA ☐ WPA-PSK

[Apply](#)[Home](#)[Advanced](#)[Tools](#)[Status](#)[Help](#)

### Wireless LAN Configuration:

☐ Wireless LAN Basic ☐ Wireless LAN Authorization ☒ MAC Address Filter

MAC Address Filter -- 1

Index

1

Mac Address

00 - 00 - 00 - 00 - 00 - 00

State

Disabled

[Cancel](#) [Help](#)

#### MAC Filter

Index	MAC Address	State	Edit	Delete
1	00:00:00:00:00:00	Disabled		
2	00:00:00:00:00:00	Disabled		
3	00:00:00:00:00:00	Disabled		
4	00:00:00:00:00:00	Disabled		
5	00:00:00:00:00:00	Disabled		
6	00:00:00:00:00:00	Disabled		
7	00:00:00:00:00:00	Disabled		
8	00:00:00:00:00:00	Disabled		
9	00:00:00:00:00:00	Disabled		
10	00:00:00:00:00:00	Disabled		
11	00:00:00:00:00:00	Disabled		
12	00:00:00:00:00:00	Disabled		





Wizard

Wireless

WAN

LAN

DHCP

Proxy DNS

Home

Advanced

Tools

Status

Help

WAN Settings

Please select the appropriate option to connect to your ISP.

☒ Dynamic IP Address

Choose this option to obtain an IP address automatically from your ISP. (For most Cable modem users)

☐ Static IP Address

Choose this option to set static IP information provided to you by your ISP.

☐ PPPoE

Choose this option if your ISP uses PPPoE. (For most DSL users)

Dynamic IP

Host Name  (optional)

MAC Address  -  -  -  -  -  (optional)

Primary DNS Address  .  .  .

Secondary DNS Address  .  .  .  (optional)



Apply Cancel



Wizard

Wireless

WAN

LAN

DHCP

Proxy DNS

Home

Advanced

Tools

Status

Help

LAN Settings

The IP address of the DVG-G1402S.

IP Address  .  .  .

Subnet Mask  .  .  .



Apply Cancel

[Wizard](#)[Wireless](#)[WAN](#)[LAN](#)[DHCP](#)[Proxy DNS](#)[Home](#)[Advanced](#)[Tools](#)[Status](#)[Help](#)

### DHCP Server

The DVG-G1402S can be setup as a DHCP Server to distribute IP addresses to the LAN network.

Name State ☒ Enabled ☐ DisabledStart IP Address    Gateway    IP Range Leased Time  hours

### Static DHCP

Static DHCP is used to allow DHCP server to assign same IP address to specific MAC address.

☐ Enabled ☒ DisabledName IP    Netmask    Gateway    MAC Address  -  -  -  -  - DHCP Client  **Apply** **Cancel**

### Static DHCP Configuration List

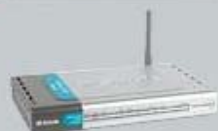
Host Name	IP Address	MAC Address	Edit	Delete
	0.0.0.0	00:00:00:00:00:00		
	0.0.0.0	00:00:00:00:00:00		
	0.0.0.0	00:00:00:00:00:00		
	0.0.0.0	00:00:00:00:00:00		

### Static DHCP Client Pool

NO.	State	IPAddress	MACAddress	Status	HostName
-----	-------	-----------	------------	--------	----------

### Dynamic DHCP Client Pool

NO.	IP Address	MAC Address	Lease Time	Status	HostName
-----	------------	-------------	------------	--------	----------

[Wizard](#)[Wireless](#)[WAN](#)[LAN](#)[DHCP](#)[Proxy DNS](#)[Virtual Server](#)[Filters](#)[Firewall](#)[RIP](#)[Routing](#)[VoIP](#)[NAT](#)[Misc.](#)[Home](#)[Advanced](#)[Tools](#)[Status](#)[Help](#)

### Proxy DNS

State

Disabled

Proxy DNS IP Address

   [Apply](#)[Home](#)[Advanced](#)[Tools](#)[Status](#)[Help](#)

### Virtual Server

Virtual Server is used to allow Internet users access to LAN services.

☐ Enabled ☒ Disabled

Index

1

Private IP

Protocol Type

TCP

Start Global Port

End Global Port

Start Local Port

End Local Port

[Apply](#) [Cancel](#)

### Virtual Servers List

Index	Private IP	Protocol	start Global Port	end Global Port	start Local Port	end Local Port	State	Edit	Delete
1	0.0.0.0	0	0	0	0	0	Disabled		
2	0.0.0.0	0	0	0	0	0	Disabled		
3	0.0.0.0	0	0	0	0	0	Disabled		
4	0.0.0.0	0	0	0	0	0	Disabled		
5	0.0.0.0	0	0	0	0	0	Disabled		
6	0.0.0.0	0	0	0	0	0	Disabled		





Virtual Server

Filters

Firewall

RIP

Routing

VoIP

NAT

Misc.

Home

Advanced

Tools

Status

Help

### Filter

Filters are used to allow or deny LAN users from accessing the Internet.

☒ IP Filter ☐ MAC Filter

### IP Filters

Use IP Filters to deny LAN IP addresses access to the Internet.

Rule 1

Protocol

UDP

IP Address

Source

0 . 0 . 0 . 0

Destination

0 . 0 . 0 . 0

Subnet Mask

Source

0.0.0.0 (/0)

Destination

0.0.0.0 (/0)

Start Port

End Port

Source

=

0

0

Destination

=

0

0

TCP Flag

0

☐ Urgent Pointer ☐ Acknowledgment ☐ Push

☐ Reset ☐ SYN ☐ FIN

Firewall Rule State Disabled



Apply Cancel

### IP Filter List

Rule	State	Source	Destination	Status	Protocol	Edit	Delete
Rule 1	Disabled	0.0.0.0	0.0.0.0	Pass	UDP		
Rule 2	Disabled	0.0.0.0	0.0.0.0	Pass	UDP		
Rule 3	Disabled	0.0.0.0	0.0.0.0	Pass	UDP		
Rule 4	Disabled	0.0.0.0	0.0.0.0	Pass	UDP		
Rule 5	Disabled	0.0.0.0	0.0.0.0	Pass	UDP		
Rule 6	Disabled	0.0.0.0	0.0.0.0	Pass	UDP		
Rule 7	Disabled	0.0.0.0	0.0.0.0	Pass	UDP		
Rule 8	Disabled	0.0.0.0	0.0.0.0	Pass	UDP		



Virtual Server

Filters

Firewall

RIP

Routing

VoIP

NAT

Misc.

Home

Advanced

Tools

Status

Help

Filter Mode:

☐ IP Filter ☒ MAC Filter

MAC Filter

Index 1

MAC Address  -  -  -  -  -

State  ▼



Apply

MAC Filter

Index	MAC Address	State	Edit	Delete
1	00:00:00:00:00:00	Disabled		
2	00:00:00:00:00:00	Disabled		
3	00:00:00:00:00:00	Disabled		
4	00:00:00:00:00:00	Disabled		
5	00:00:00:00:00:00	Disabled		
6	00:00:00:00:00:00	Disabled		
7	00:00:00:00:00:00	Disabled		
8	00:00:00:00:00:00	Disabled		
9	00:00:00:00:00:00	Disabled		
10	00:00:00:00:00:00	Disabled		
11	00:00:00:00:00:00	Disabled		
12	00:00:00:00:00:00	Disabled		
13	00:00:00:00:00:00	Disabled		
14	00:00:00:00:00:00	Disabled		
15	00:00:00:00:00:00	Disabled		



Virtual Server

Filters

Firewall

RIP

Routing

VoIP

NAT

Misc.

Home

Advanced

Tools

Status

Help

### Firewall Rules

Firewall Rules can be used to allow or deny traffic from passing through the DVG-G1402S.

Rule 1

Pass or Block

Pass

Protocol

UDP

IP Address

Source 0 . 0 . 0 . 0

Destination 0 . 0 . 0 . 0

Subnet Mask

Source 0.0.0.0 (/0)

Destination 0.0.0.0 (/0)

Start Port

End Port

Source = 0 0

Destination = 0 0

TCP Flag 0

☐ Urgent Pointer ☐ Acknowledgment ☐ Push

☐ Reset ☐ SYN ☐ FIN

Firewall Rule State Disabled



Apply Cancel

### Firewall Rules List

Rule	State	Source	Destination	Status	Protocol	Edit	Delete
Rule 1	Disabled	0.0.0.0	0.0.0.0	Pass	UDP		
Rule 2	Disabled	0.0.0.0	0.0.0.0	Pass	UDP		
Rule 3	Disabled	0.0.0.0	0.0.0.0	Pass	UDP		
Rule 4	Disabled	0.0.0.0	0.0.0.0	Pass	UDP		
Rule 5	Disabled	0.0.0.0	0.0.0.0	Pass	UDP		
Rule 6	Disabled	0.0.0.0	0.0.0.0	Pass	UDP		
Rule 7	Disabled	0.0.0.0	0.0.0.0	Pass	UDP		



Virtual Server

Filters

Firewall

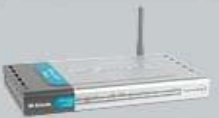
RIP

Routing

VoIP

NAT

Misc



Virtual Server

Filters

Firewall

RIP

Routing

VoIP

NAT

Misc.

Home

Advanced

Tools

Status

Help

### Routing - RIP

Version

LAN ☒ RIPv1 ☐ RIPv2

WAN ☒ RIPv1 ☐ RIPv2

State

☐ On ☒ Off

☐ On ☒ Off



Apply Cancel Help

Home

Advanced

Tools

Status

Help

### Routing - Static Route -- 1

IP Address

Subnet Mask

Gateway

Interface

Metric

State



Apply

	IP Address	Subnet Mask	Gateway	Interface	Metric	State	Edit	Delete
1	0.0.0.0	0.0.0.0	0.0.0.0	WAN	0	Disabled		
2	0.0.0.0	0.0.0.0	0.0.0.0	WAN	0	Disabled		
3	0.0.0.0	0.0.0.0	0.0.0.0	WAN	0	Disabled		
4	0.0.0.0	0.0.0.0	0.0.0.0	WAN	0	Disabled		
5	0.0.0.0	0.0.0.0	0.0.0.0	WAN	0	Disabled		
6	0.0.0.0	0.0.0.0	0.0.0.0	WAN	0	Disabled		
7	0.0.0.0	0.0.0.0	0.0.0.0	WAN	0	Disabled		
8	0.0.0.0	0.0.0.0	0.0.0.0	WAN	0	Disabled		



Virtual Server

Filters

Firewall

RIP

Routing

VoIP

NAT

Misc.

### SIP Configuration:

☒ Server Configuration ☐ Provisioning ☐ STUN Configuration ☐ User Agent

☐ Peer to Peer ☐ Telephony

### SIP Server

Server FQDN

IP Address  .  .  .

Domain Name

Port

Outbound Proxy State

Outbound Proxy Server FQDN

Outbound Proxy IP Address  .  .  .

Outbound Proxy Domain Name

Outbound Proxy Port

Service Domain

URL Format

User Parameter Phone

Caller ID Delivery

Display CID

Timer T2  sec

Initial Unregister

Register Expiration  sec

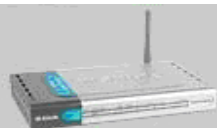
Session Expires  sec

Min-SE  sec

Session Expires Refresher

### Codec Priority & Packet Interval

G.711a-law	<input type="text" value="3rd"/>	<input type="text" value="20"/> ms
G.711u-law	<input type="text" value="2nd"/>	<input type="text" value="20"/> ms
G.723.1	<input type="text" value="5th"/>	<input type="text" value="30"/> ms
G.729a	<input type="text" value="1st"/>	<input type="text" value="20"/> ms
G.726	<input type="text" value="4th"/>	<input type="text" value="20"/> ms



Virtual Server

Filters

Firewall

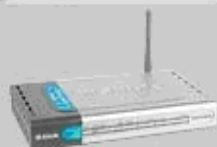
RIP

Routing

VoIP

NAT

Misc.



Virtual Server

Filters

Firewall

RIP

Routing

VoIP

NAT

Misc.

Home

Advanced

Tools

Status

Help

SIP Configuration:

☐ Server Configuration ☒ Provisioning ☐ STUN Configuration ☐ User Agent

☐ Peer to Peer ☐ Telephony

XML Provisioning

Provisioning Function

Server URL

Proxy Address

Proxy Port Number



Apply



Cancel

Home

Advanced

Tools

Status

Help

SIP Configuration:

☐ Server Configuration ☐ Provisioning ☒ STUN Configuration ☐ User Agent

☐ Peer to Peer ☐ Telephony

STUN State

STUN Server IP Address  .  .  .

STUN Server Port

STUN ReqInterval

STUN NAT Type



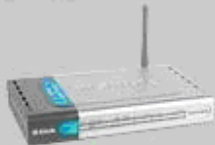
Apply



Cancel

NAT Type Detect

Index	SIP Message socket mapped ip/port	SIP RTP socket mapped ip/port
1	0.0.0.0:0	0.0.0.0:0
2	0.0.0.0:0	0.0.0.0:0



Virtual Server

Filters

Firewall

RIP

Routing

VoIP

NAT

Misc.

Home

Advanced

Tools

Status

Help

### SIP Configuration:

☐ Server Configuration ☐ Provisioning ☐ STUN Configuration ☒ User Agent

☐ Peer to Peer ☐ Telephony

SIP Configuration - User Agent

Same Phone Number

Disabled

Index

1

Phone Number

Display Name

User Agent Port

5060

Authentication Username

Password

Retype Password



Apply

Query Registration State

Query

Register

Unregister




Virtual Server

Filters

Firewall

RIP

Routing

VoIP

NAT

Misc.

Home

Advanced

Tools

Status

Help

### SIP Configuration:

☐ Server Configuration ☐ Provisioning ☐ STUN Configuration ☐ User Agent

☒ Peer to Peer ☐ Telephony

Index 1

Phone Number

User IP Address  @  0  0  0  0

Port  5060

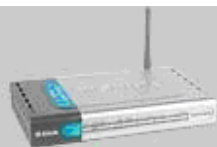


Apply Cancel Help

### SIP - Peer to Peer

Index	Phone Number	User IP Address	Port	Edit	Delete
1		@ 0.0.0.0	5060		
2		@ 0.0.0.0	5060		
3		@ 0.0.0.0	5060		
4		@ 0.0.0.0	5060		
5		@ 0.0.0.0	5060		
6		@ 0.0.0.0	5060		
7		@ 0.0.0.0	5060		
8		@ 0.0.0.0	5060		
9		@ 0.0.0.0	5060		
10		@ 0.0.0.0	5060		





Virtual Server

Filters

Firewall

RIP

Routing

VoIP

NAT

Misc.

Home

Advanced

Tools

Status

Help

### SIP Configuration:

☐ Server Configuration ☐ Provisioning ☐ STUN Configuration ☐ User Agent

☐ Peer to Peer ☒ Telephony

SIP Telephony

Index

1

DTMF Method

Info

Payload Type

120

VAD

Enabled



Apply



Virtual Server

Filters

Firewall

RIP

Routing

VoIP

NAT

Misc.

Home

Advanced

Tools

Status

Help

### NAT Configuration:

☒ NAT Configuration ☐ Dynamic NAT ☐ Static NAT

NAT Interface IP Address

192.168.15.1

NAT Interface Netmask

255.255.255.0

NAT Function

Enabled



Apply Cancel





Virtual Server

Filters

Firewall

RIP

Routing

VoIP

NAT

Misc.

Home

Advanced

Tools

Status

Help

Bridge mode

Bridge Mode

DMZ

DMZ Forwarding Mode

DMZ Host IP Address  .  .  .

ToS

Signaling ToS

RTP ToS

Gain Control

Receive Gain  db

Transmission Gain  db

Telephony Configuration

Digit Timeout  sec

T.38 Configuration

T.38

MTU Size Configuration

MTU Size

UPnP

UPnP

IPSec

IPSec Passthrough

PPTP

PPTP Passthrough

PPPoE Passthrough

PPPoE Passthrough

WAN Port

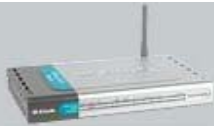
WAN Port speed selection



Apply



Cancel



Admin

System

Firmware

SNMP

Time

Reboot

Home

Advanced

Tools

Status

Help

### Administrator Settings

#### Web Management

Web Port Number

80



Cancel

#### WAN Access Control

Access WEB from WAN



Enabled



Disabled



Cancel

#### Administrator (The Login Name is "admin")

Old Password

New Password

Confirm Password



Cancel



Admin

System

Firmware

SNMP

Time

Reboot

Home

Advanced

Tools

Status

Help

### Backup and Restore Configuration file

#### Backup configuration file

Backup

#### Restore Configuration File

Browse...

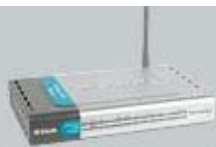
Upload

### System Settings

#### Restore To Factory Default Settings

Reset to Factory Default





Admin

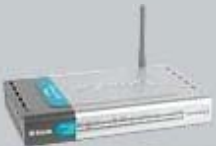
System

Firmware

SNMP

Time

Reboot



Admin

System

Firmware

SNMP

Time

Reboot

Home

Advanced

Tools

Status

Help

### Firmware Update

#### Software Update Mode & TFTP Server Address

Software Update Mode TFTP

TFTP Server Address  .  .  .

Last TFTP Server Address 0.0.0.0

#### Update Firmware

Firmware Update

File Name

Last Update Status



Apply



Cancel



Help

Home

Advanced

Tools

Status

Help

### SNMP Management

#### SNMP IP Management Address

IP Address 1  .  .  .

IP Address 2  .  .  .

#### SNMP Trap Management

SNMP Authentication

Trap Manager IP  .  .  .

Trap Community Name



Apply



Admin

System

Firmware

SNMP

Time

Reboot



Admin

System

Firmware

SNMP

Time

Reboot

Home

Advanced

Tools

Status

Help

### NTP Setting

NTP Server

Time Zone

GMT Greenwich Mean Time

NTP Time(h:m:s,m/d/y)

Time Not Ready



Apply



Cancel



Help

Home

Advanced

Tools

Status

Help

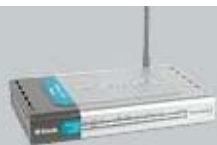
### Restart Device

Reboot the DVG-G1402S

Reboot



Help

[Device Info](#)[Stats](#)[Diagnostics](#)[Home](#)[Advanced](#)[Tools](#)[Status](#)[Help](#)

### Device Information

Device Type	VoIP Gateway
MAC Address	00:0f:3d:a8:55:a3
Boot PROM Version	1.00.001
Firmware Version	1.00.001AUS
DSP Version	0.11.8.0
SIP Version	1.0.3
Current Mode	Router

### WAN

IP Address	10.1.1.3
Subnet Mask	255.0.0.0
Default Gateway	10.1.1.2

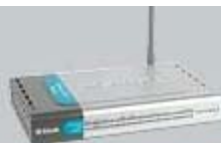
### LAN

LAN MAC Address	00:0f:3d:a8:55:a4
IP Address	192.168.15.1
Subnet Mask	255.255.255.0

### Wireless LAN

AP Name	wlan0
MAC Address	00:11:95:DF:86:1A
AP State	up

[Help](#)

[Device Info](#)[Stats](#)[Diagnostics](#)[Device Info](#)[Stats](#)[Diagnostics](#)[Home](#)[Advanced](#)[Tools](#)[Status](#)[Help](#)

### Traffic Statistics

Traffic Statistics display Receive and Transmit packets passing through the DVG-G1402S.

WAN

Receive

Transmit

packets

0

packets

171

bytes

0

bytes

44786

NonUcastPackets

0

NonUcastPackets

141

DiscardPackets

0

DiscardPackets

0

FrameTooLong

0

HeartbeatErrors

0

NonAlignedErrors

0

LateCollision

0

CollisionErrors

0

RetransmissionLimit

0

ShortFrames

0

UnderrunPackets

0

CRCErrors

0

CarrierSenseLost

0

OverrunPackets

0

### Phone Port Statistics

Phone Port

1

2

Channel

1

3

2

4

RxVoicePackets

0

0

0

0

RxMinJitter

0

0

0

0

RxMaxJitter

0

0

0

0

RxRTPAvgJitter

0

0

0

0

RxDTMFPackets

0

0

0

0

TxVoicePackets

0

0

0

0

TxGrantReSyncCount

0

0

0

0

TxDTMFPackets

0

0

0

0

MicroOverflowCount

0

0

0

0

PktsLostByNetwork

0

0

0

0

TxHoldDropCount

0

0

0

0

RxHoldDropCount

0

0

0

0

[Home](#)[Advanced](#)[Tools](#)[Status](#)[Help](#)

### Diagnostics

This page provides for ping diagnostics to the LAN to help with IP connectivity problems.

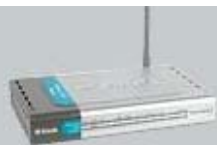
Ping Target

Ping Result



Help





**Help**

**Home**

**Advanced**

**Tools**

**Status**

**Help**

## Home

- Wizard
- Wireless Setting
- WAN Settings
- LAN Settings
- DHCP Server

## Advanced

- Virtual Server
- Filters
- Firewall
- RIP
- Routing
- VoIP
- NAT
- DMZ
- Misc.

## Tools

- Admin
- System
- Firmware
- SNMP
- Time

## Status

- Device Info
- Status
- Diagnostics

## FAQs