

DVG-G1402S VoIP Configuration With Mynetfone

Log into the DVG-G1402S: open your Internet Explorer and type in the IP address of the unit (by default it is 192.168.15.1). Select VoIP menu. You only need to modify “Server Configuration” and “User Agent” settings.

Provisioning, STUN, Peer-to-Peer, Telephony, and Misc. options can be left at their default settings.

Specify the following under Server Configuration:

D-Link
Building Networks for People

DVG-G1402S
Wireless VoIP Router

Home Advanced Tools Status Help

Wizard
Wireless
WAN
LAN
VoIP
DHCP
Proxy DNS

SIP Server

Server FQDN Enabled
IP Address 0 . 0 . 0 . 0
Domain Name sip01.mynetfone.com.a
Port 5060

Secondary Server FQDN Disabled
Secondary IP Address 0 . 0 . 0 . 0
Secondary Domain Name
Secondary Port 5060

Outbound Proxy State Enabled
Outbound Proxy Server FQDN Enabled
Outbound Proxy IP Address 0 . 0 . 0 . 0
Outbound Proxy Domain Name sip01.mynetfone.com.a

Internet

Cannot find server - Microsoft Internet Explorer

File Edit View Favorites Tools Help

Outbound Proxy IP Address 0 . 0 . 0 . 0

Outbound Proxy Domain Name sip01.mynetfone.com.a

Outbound Proxy Port 5060

Service Domain sip01.mynetfone.com.a

URL Format SIP-URL

User Parameter Phone Disabled

Caller ID Delivery YES

Display CID Enabled

Timer T2 4 sec

Initial Unregister Enabled

Register Expiration 3600 sec

Session Expires 180 sec

Min-SE 180 sec

Session Expires Refresher uac

Codec Priority & Packet Interval

G.711a-law	no-use	20	ms
G.711u-law	no-use	20	ms
G.729a	1st	30	ms
G.726	no-use	20	ms

Internet

Click on the Apply button.

Enter your account settings under User Agent section:

Cannot find server - Microsoft Internet Explorer

File Edit View Favorites Tools Help

D-Link
Building Networks for People

DVG-G1402S
Wireless VoIP Router

Home Advanced Tools Status Help

Wizard
Wireless
WAN
LAN
VoIP
DHCP
Proxy DNS

User Agent

Same Phone Number: Enabled
Index: 1
Phone Number: 09111999
Display Name: 09111999
User Agent Port: 5060
Authentication Username: 09111999
Password:
Retype Password:

Back Apply Cancel Help

Query Registration State

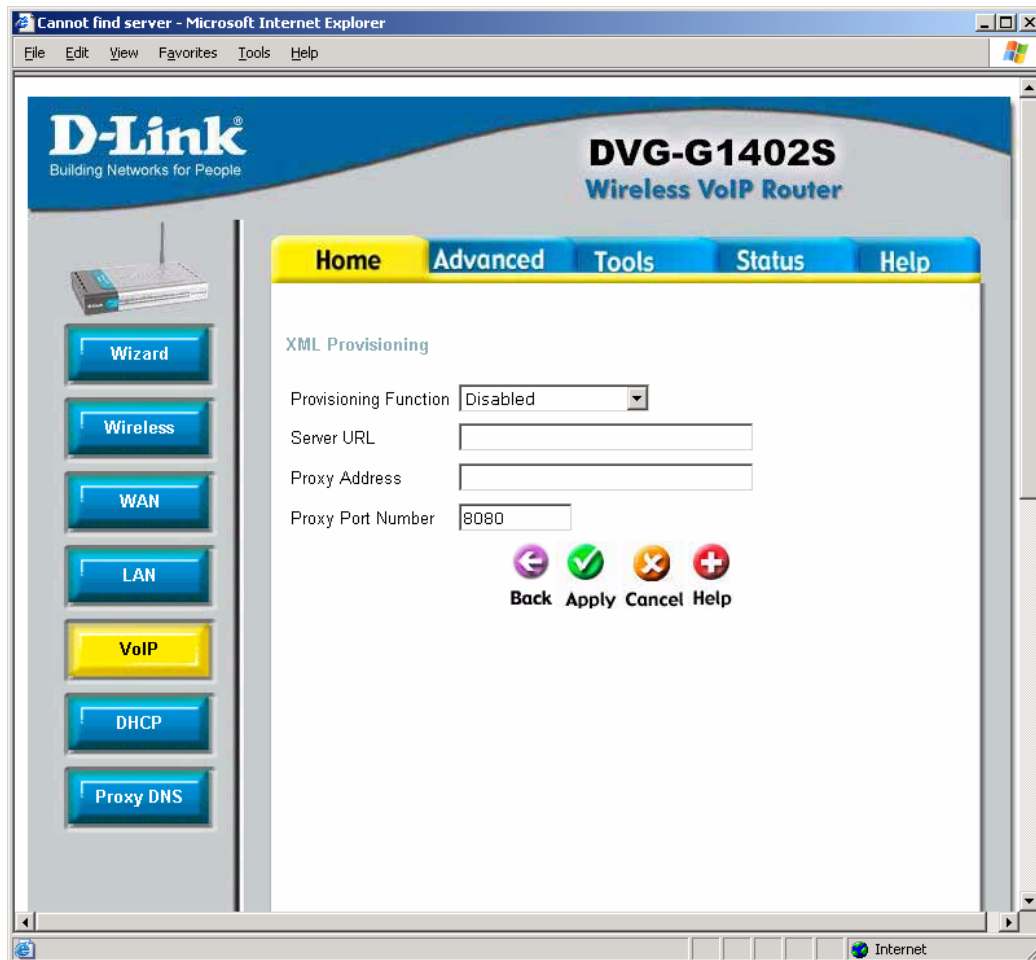
Query Register Unregister

Done Internet

Click on the Apply button.

After the configuration is done go to Tools tab on top and select the Reboot option on the left. Click on the Reboot button.

Provisioning, STUN, Peer-to-Peer, Telephony, and Misc. options can be left at their default settings.




Cannot find server - Microsoft Internet Explorer

File Edit View Favorites Tools Help

Building Networks for People

DVG-G1402S
Wireless VoIP Router



Wizard

Wireless

WAN

LAN

VoIP

DHCP

Proxy DNS

Home

Advanced

Tools

Status

Help

STUN Configuration

STUN State

Disabled

STUN Server FQDN

Disabled

STUN Server IP Address

0

.

0

.

0

.

0

Stun Server Name

STUN Server Port

3478


STUN ReqInterval


60


STUN NAT Type


UnKnown

NAT Type Detect









Back

Apply

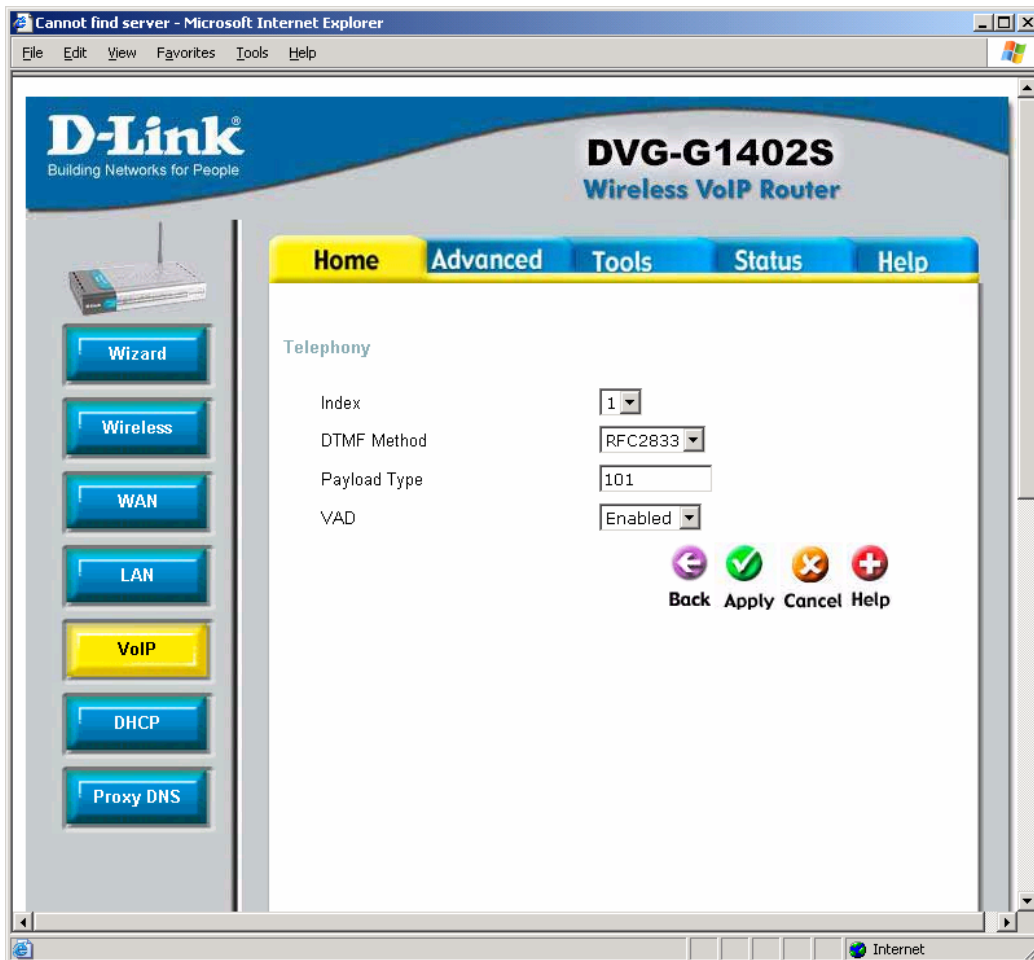
Cancel

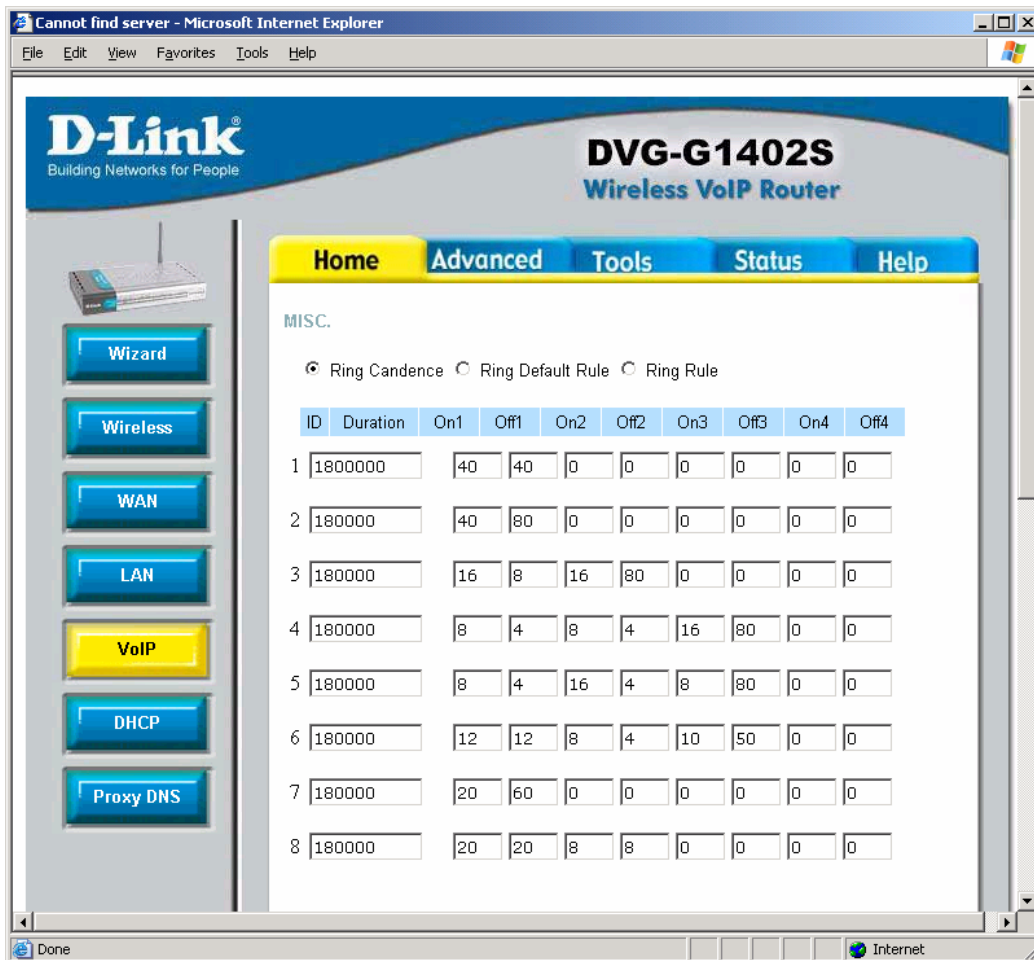
Help

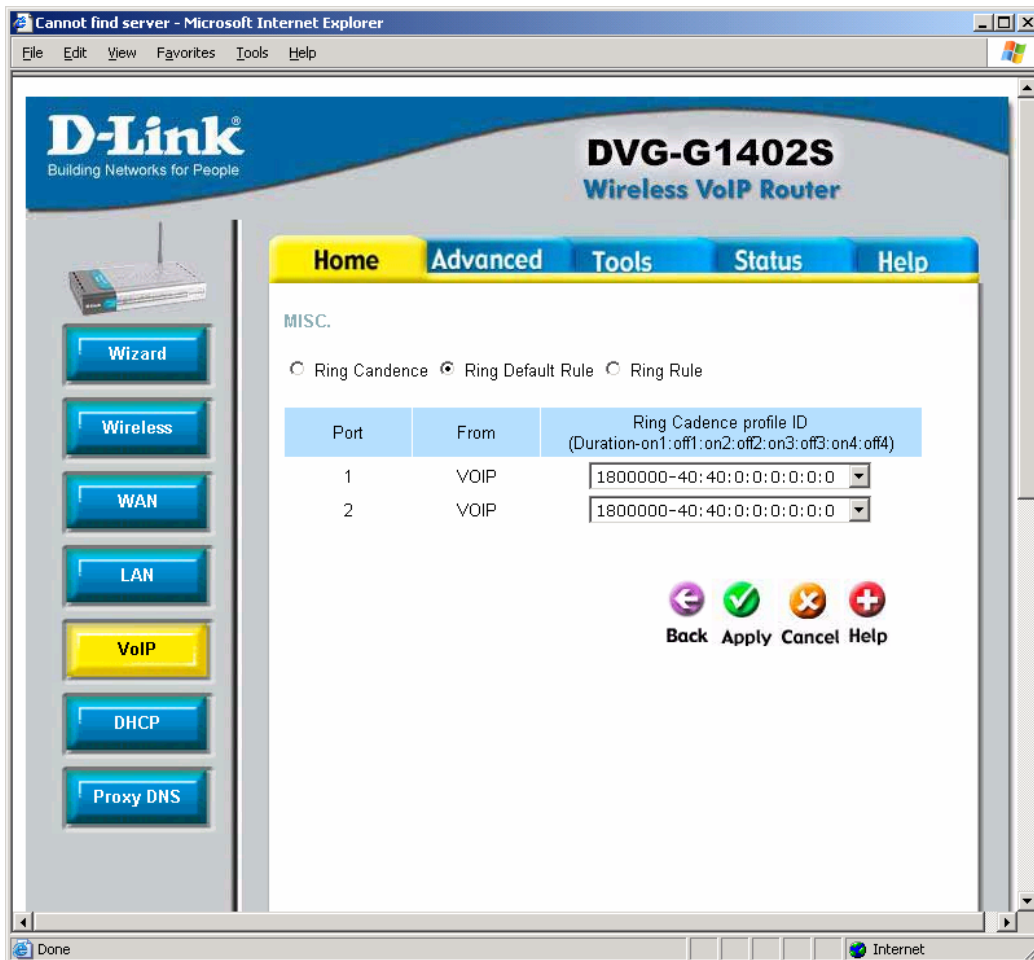
Index	SIP Message socket mapped ip/port	SIP RTP socket mapped ip/port
1	0.0.0.0:0	0.0.0.0:0
2	0.0.0.0:0	0.0.0.0:0

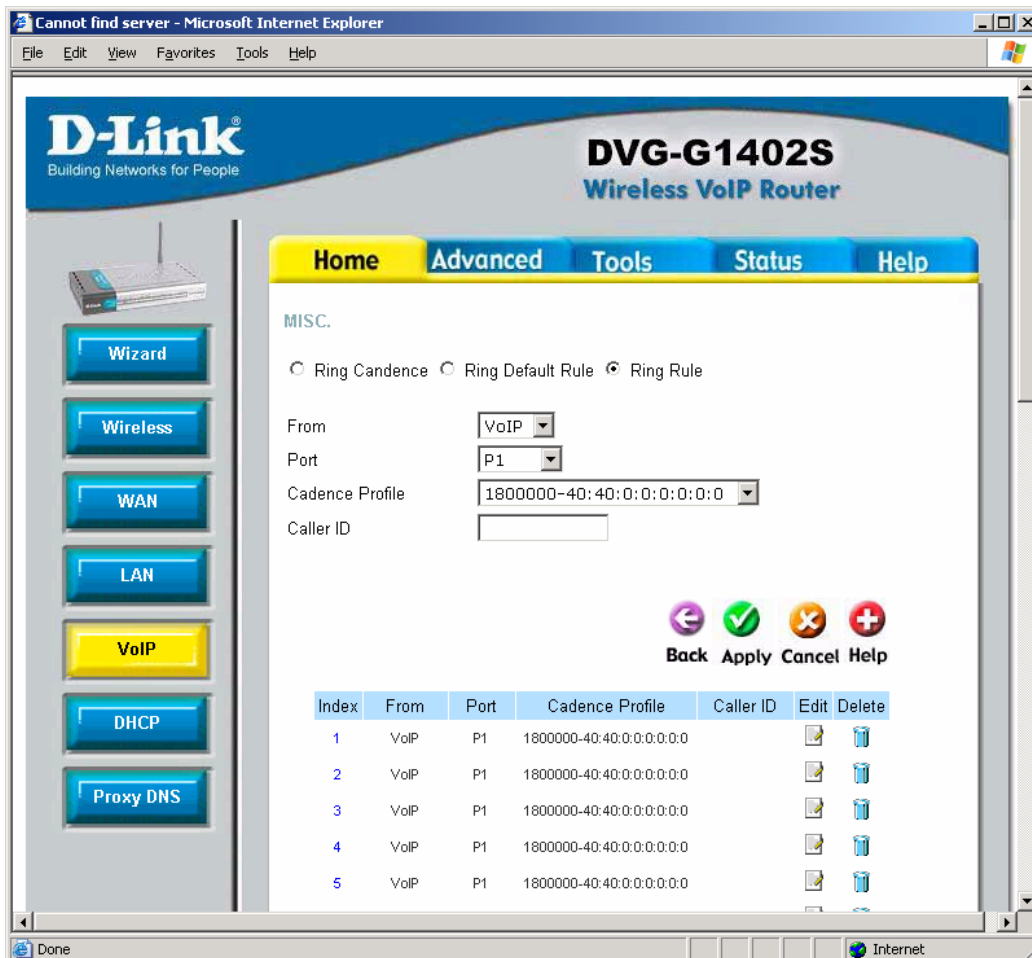
Done

Internet









Status > Phone Call should show “Registered” under Registration State:

Cannot find server - Microsoft Internet Explorer

File Edit View Favorites Tools Help

D-Link
Building Networks for People

DVG-G1402S
Wireless VoIP Router

Home Advanced Tools **Status** Help

☐ Network ☒ Phone Call

Line 1 Status

Hook State	OnHook	Registration State	Registered
Call State	StateNull	Tone State	Null
Message Waiting			
Call 1 State	IDLE	Call 2 State	IDLE
Call 1 Direction		Call 2 Direction	
Call 1 Mode		Call 2 Mode	
Call 1 Codec		Call 2 Codec	
Call 1 Packetization		Call 2 Packetization	
Call 1 T.38		Call 2 T.38	
Call 1 Hold Remote		Call 2 Hold Remote	
Call 1 Remote Hold		Call 2 Remote Hold	
Call 1 Peer Name		Call 2 Peer Name	
Call 1 Peer Number		Call 2 Peer Number	
Call 1 Peer RTP Addr		Call 2 Peer RTP Addr	
Call 1 Mapped RTP Port		Call 2 Mapped RTP Port	
Call 1 Duration		Call 2 Duration	
Call 1 Packets Send		Call 2 Packets Send	
Call 1 Packets Recv		Call 2 Packets Recv	
Call 1 Bytes Send		Call 2 Bytes Send	
Call 1 Bytes Recv		Call 2 Bytes Recv	
Call 1 Jitter		Call 2 Jitter	
Call 1 Decode Latency		Call 2 Decode Latency	
Call 1 Packets Lost		Call 2 Packets Lost	
Call 1 Packets Error		Call 2 Packets Error	

Line 2 Status

Hook State	OnHook	Registration State	Registered
Call State	StateNull	Tone State	Null

Done Internet

~ End of Document ~