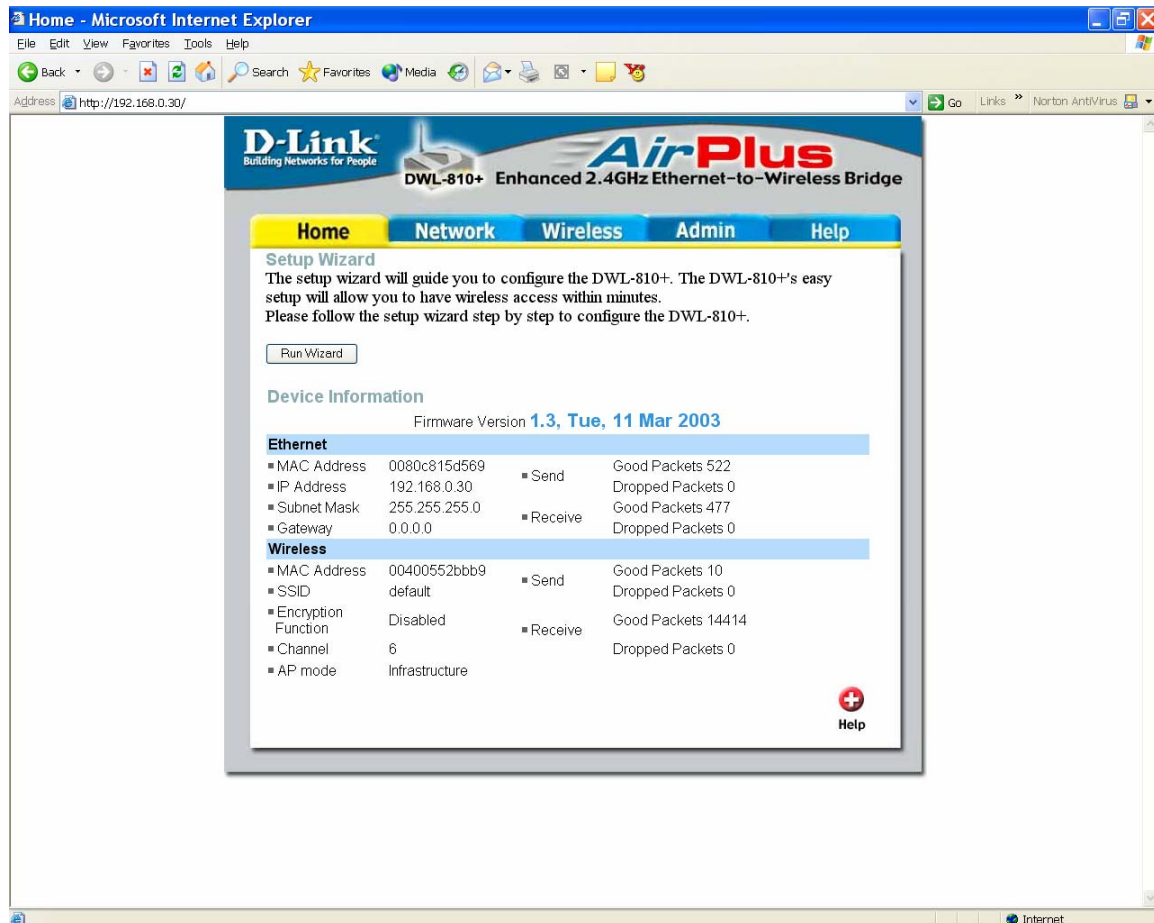


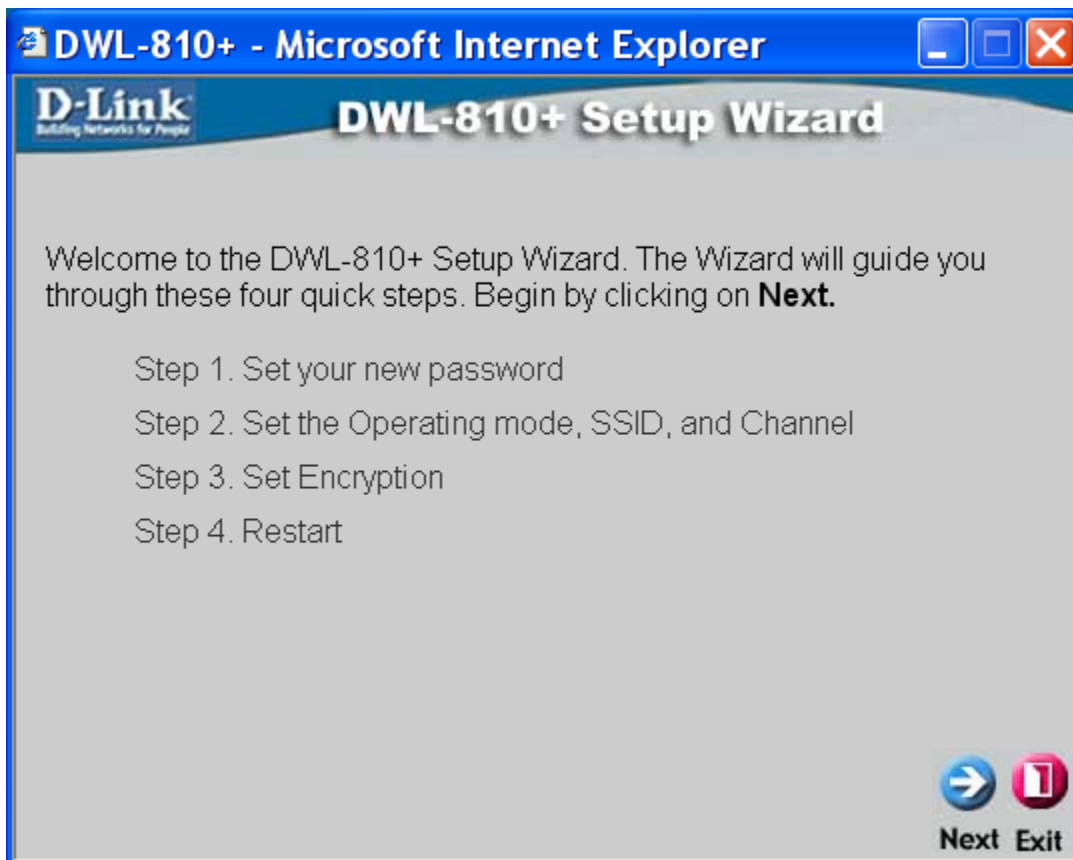
## DWL-810+ screen shots

By Zaman (22/10/03)

Note: When you use the ethernet cable connected to the LAN port, the WLAN LED is brighter. When using just wireless only, the WLAN LED is dimmer. This blinks when there is activity



Clicking on run wizard gives the following:



DWL-810+ - Microsoft Internet Explorer

D-Link

Building Networks for People

DWL-810+ Setup Wizard

Set Password

You may change the **admin** account password by entering in a new password. Click **Next** to continue.

New Password

.....

Confirm Password

.....

Back Next Exit

DWL-810+ - Microsoft Internet Explorer

**D-Link**  
Building Networks for People

## DWL-810+ Setup Wizard

### Set Wireless LAN Connection

Choose the Operating mode and enter in the SSID name and Channel number to be used for the Wireless Access Point. Click **Next** to continue.

Operating Mode : ☐ Ad-hoc ☒ Infrastructure

SSID :

Remote AP MAC :

Channel :  (for ad-hoc mode only)

When select Ad-hoc:

**DWL-810+ - Microsoft Internet Explorer**

**D-Link** **DWL-810+ Setup Wizard**

### Set Wireless LAN Connection

Choose the Operating mode and enter in the SSID name and Channel number to be used for the Wireless Access Point. Click **Next** to continue.

Operating Mode : ☒ Ad-hoc ☐ Infrastructure

SSID :

Channel :  (for ad-hoc mode only)



**Back Next Exit**

When in infrastructure mode, you must enter the remote MAC address otherwise it will not go to the next screen. When click on site survey get the following:

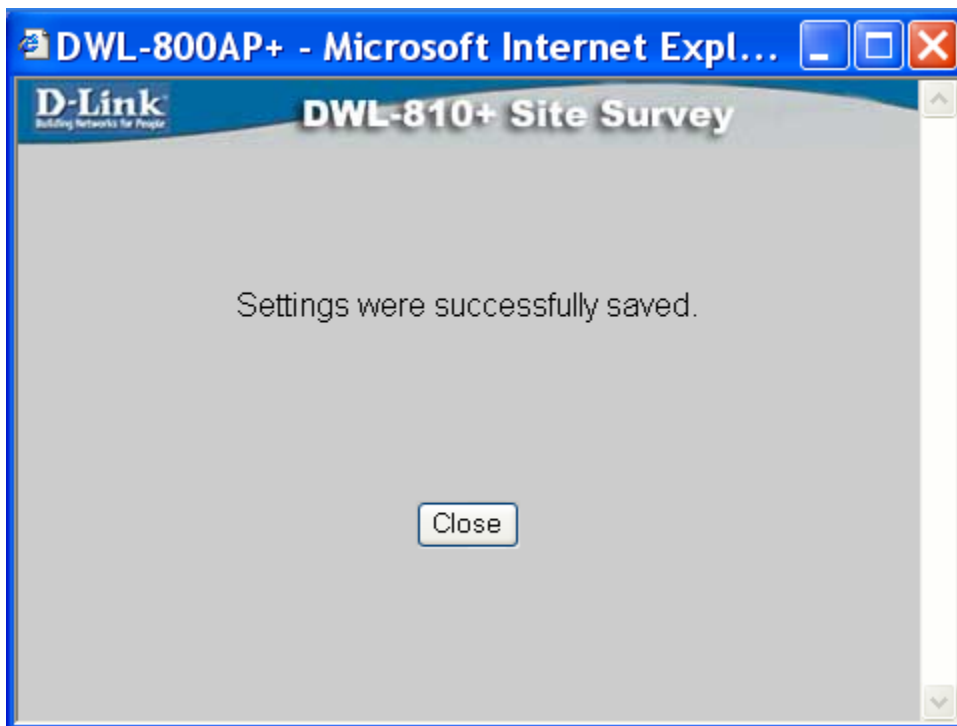
**DWL-810+ - Microsoft Internet Explorer**

**D-Link** **DWL-810+ Site Survey**

	BSS	SSID	WEP
<input checked="" type="radio"/>	00-40-05-5d-e9-3c	marpi	No
<input type="radio"/>	00-05-5d-75-84-a7	RMA	Yes

**Connect Exit**



DWL-810+ - Microsoft Internet Explorer

DWL-810+ Setup Wizard

Setup Encryption

If you wish to use encryption,enable it here and enter the encryption Key values.Click **Next** to continue.

Wep : ☐ Enabled ☒ Disabled

Encryption : 

64Bit

WEP Mode : 

64Bit  
128Bit  
256Bit

Key1 :

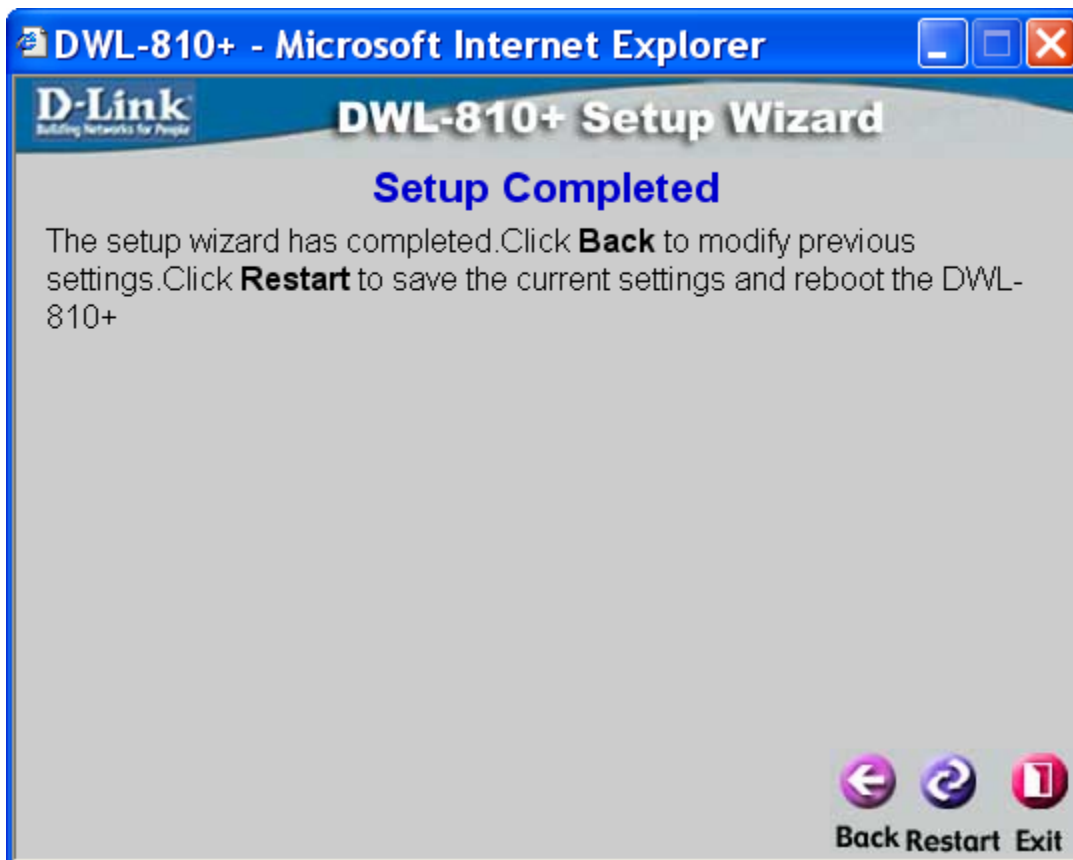
Key2 :

Key3 :

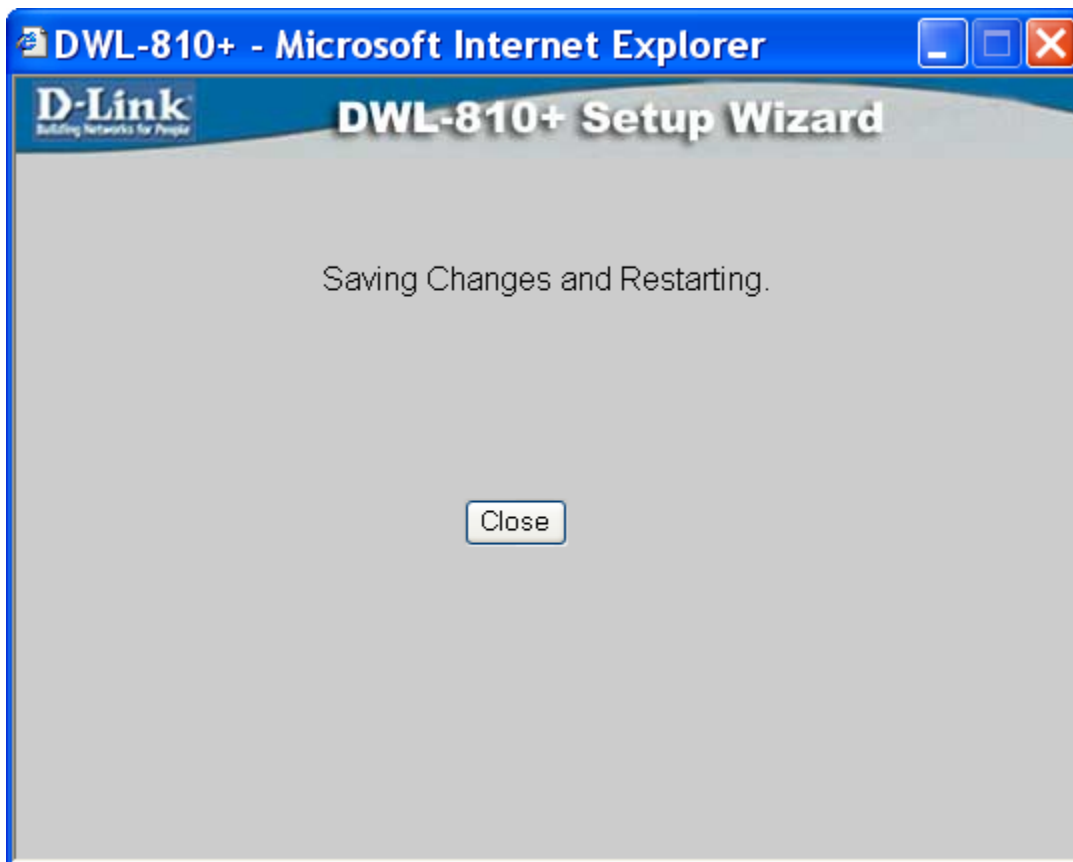
Key4 :



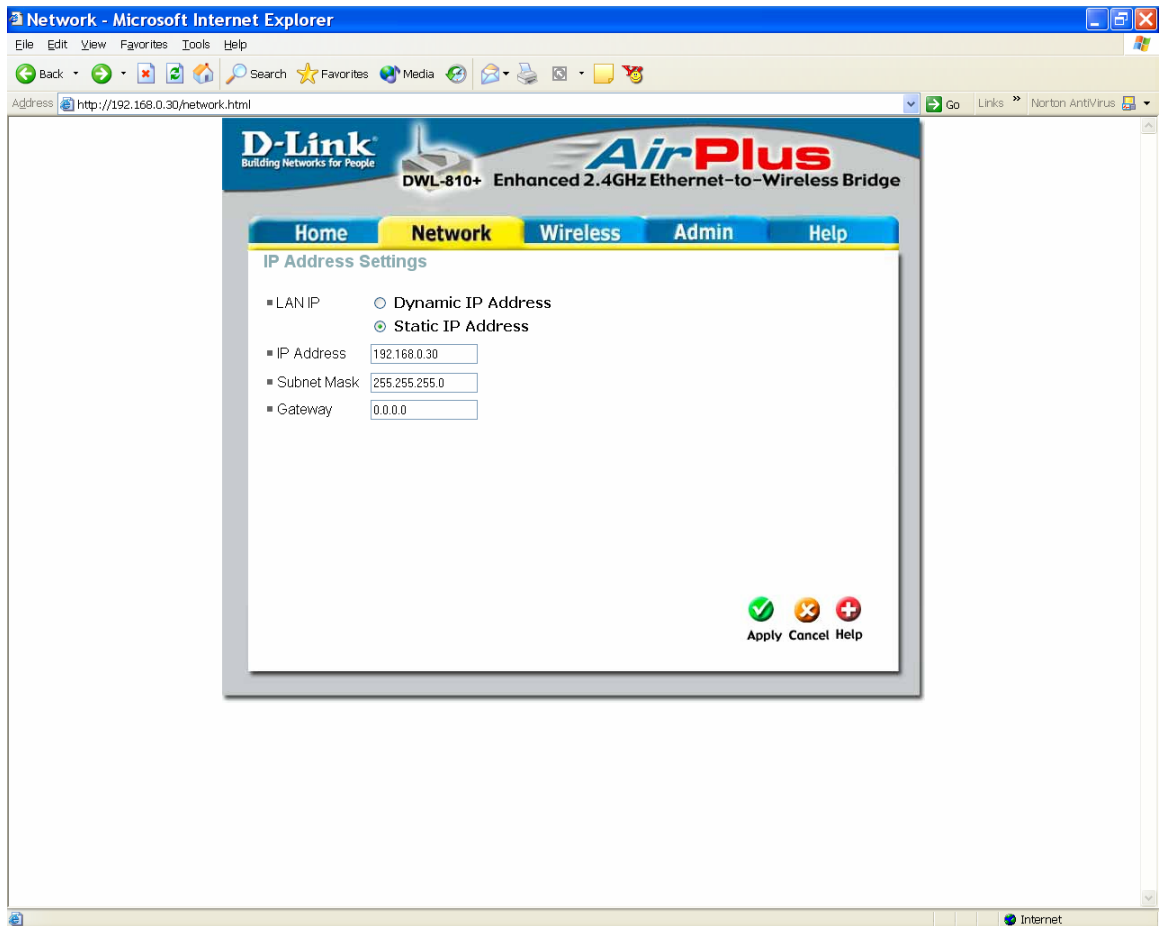
Back Next Exit

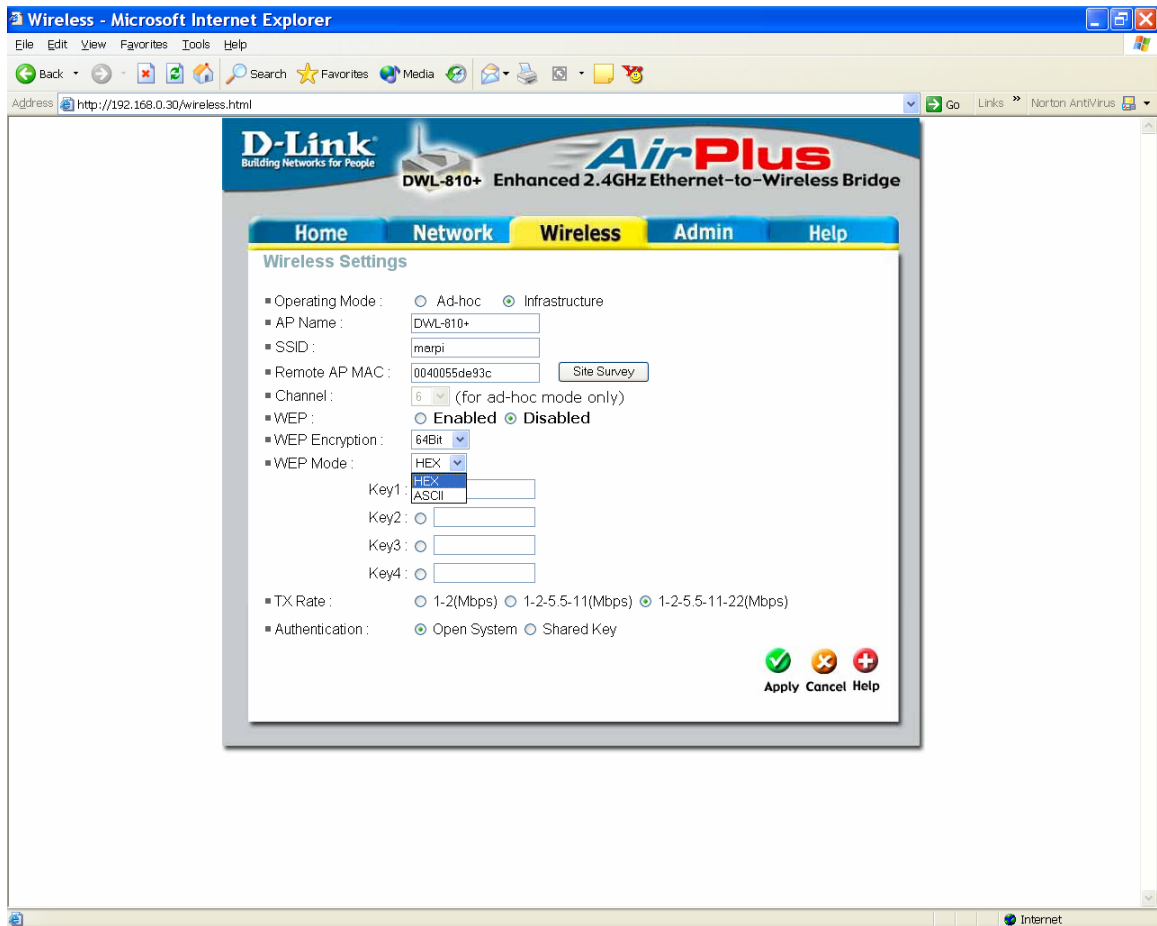






Going to Network Tab:





When click on Ah-hoc get the following.

