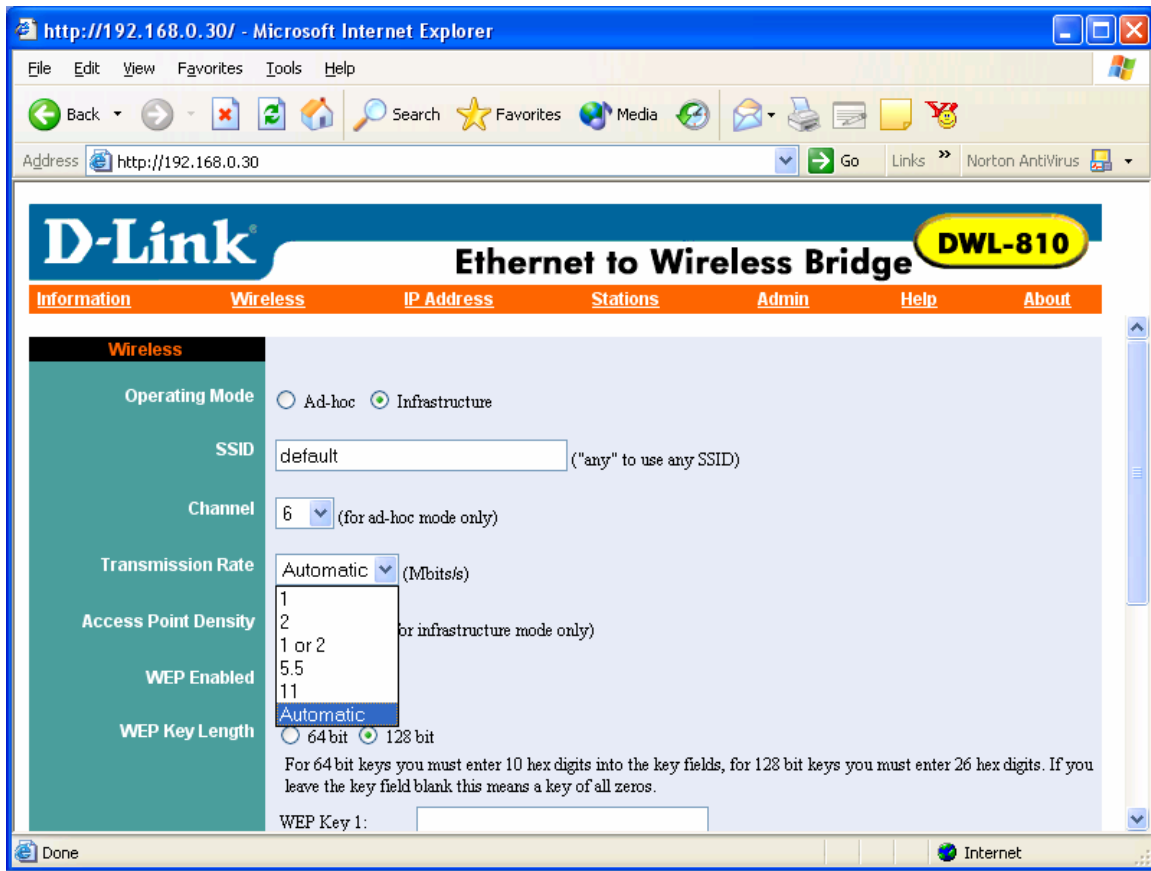


## DWL-810 Screenshots

The screenshot shows the D-Link DWL-810 web interface accessed via a Microsoft Internet Explorer browser. The browser's address bar shows the URL `http://192.168.0.30/`. The interface features a blue header with the D-Link logo and the product name "Ethernet to Wireless Bridge DWL-810". Below the header is a navigation menu with tabs: Information, Wireless, IP Address, Stations, Admin, Help, and About. The "Information" tab is currently selected, displaying a table of system status information.

Information	
Connected To SSID	non-spec (444444444444)
Using Channel	13
Current Transmission Rate (Mbps/s)	2
Current Communications Quality (%)	0
Bridge MAC Address	004005AF4A7A
Bridge IP Address	192.168.0.30
Bridge Firmware Version	1.6.0

The browser's status bar at the bottom shows "Done" and "Internet".





**D-Link®**

**Ethernet to Wireless Bridge**

**DWL-810**

Information

Wireless

IP Address

Stations

Admin

Help

About

Transmission Rate

Automatic (Mbits/s)

Access Point Density

High (for infrastructure mode only)

WEP Enabled

Low  
Medium  
High

WEP Key Length

☐ 64 bit

☒ 128 bit

For 64 bit keys you must enter 10 hex digits into the key fields, for 128 bit keys you must enter 26 hex digits. If you leave the key field blank this means a key of all zeros.

WEP Key 1:

WEP Key 2:

WEP Key 3:

WEP Key 4:

WEP Key To Use:

1

Deny Unencrypted Data

☐

Shared Key Authentication

☐

Apply

Cancel



# D-Link® Ethernet to Wireless Bridge **DWL-810**

[Information](#) [Wireless](#) [IP Address](#) [Stations](#) [Admin](#) [Help](#) [About](#)

## IP Address

### IP Address Mode

☒ Static

IP Address : 192.168.0.30

IP Subnet : 255.255.255.0

IP Gateway : 192.168.0.1

☐ DHCP

### Bridge Name

(This is optional)

### Allow Upgrade Uploads

☒ (Leave this off during normal operation)

### Cloning bridge

☒ (Use this option to enable MAC cloning. Bridge will set the wireless interface to use the MAC address of a device from the wired side. Multiple devices can be connected but only the first device will be cloned. This is required for special networking situations, Eg. Xbox, or IPX networking.)

http://192.168.0.30/ - Microsoft Internet Explorer

File Edit View Favorites Tools Help

Back Forward Stop Home Search Favorites Media Print Mail News RSS

Address http://192.168.0.30 Go Links Norton AntiVirus

# D-Link Ethernet to Wireless Bridge DWL-810

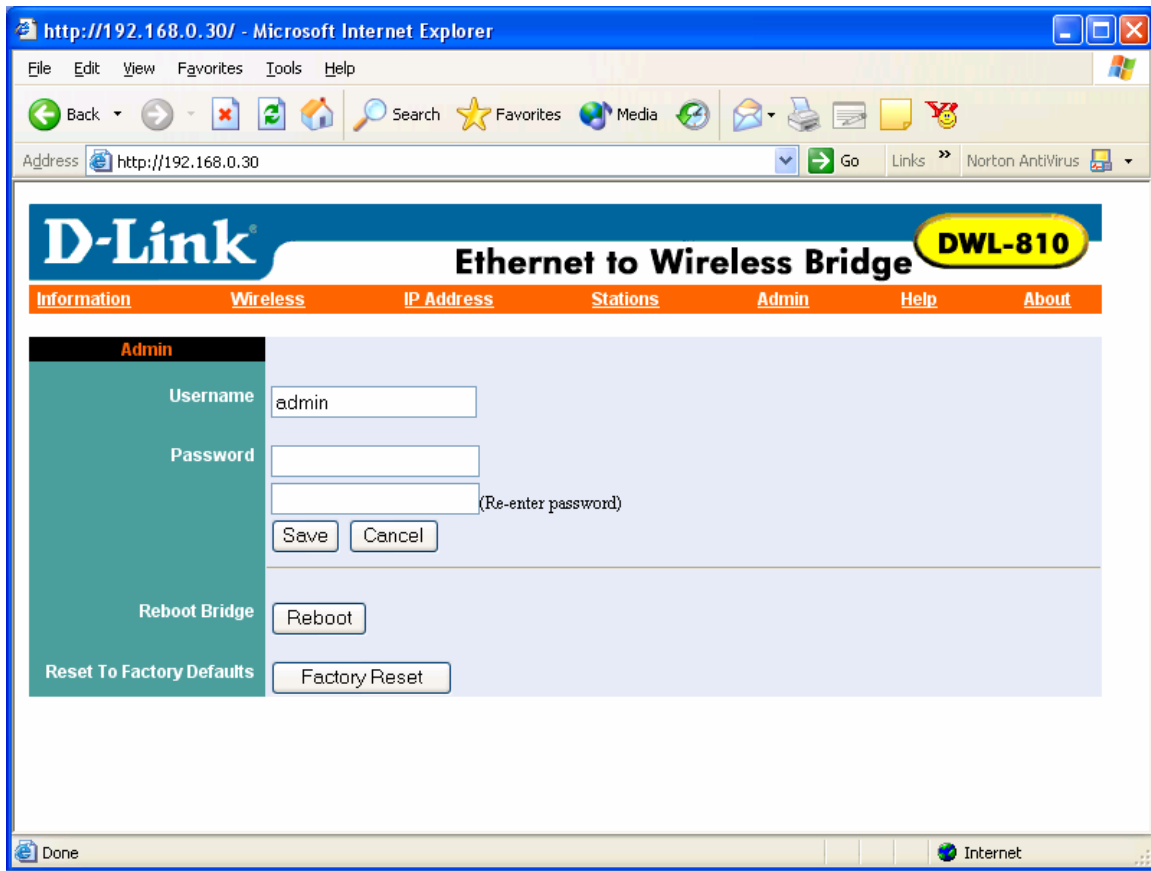
Information Wireless IP Address Stations Admin Help About

## Stations

### Bridge Table

IP Address	MAC Address
192.168.0.230	0047583A7F01
192.168.0.245	0800462B76D3
192.168.0.156	00055D685D9D
192.168.0.11	00900B00C4F1
192.168.0.58	0020ED36E53B
192.168.0.227	0090274F026A
192.168.0.178	00055D5751AA
192.168.0.177	00055D5751A1
192.168.0.232	0800462B35DB
192.168.0.179	0080C8DA11E3
202.129.109.67	0050BA7969BF
192.168.0.249	0020ED39EC21
202.129.109.71	00055DF9289A
192.168.0.8	0080C8DAF066

Done Internet



http://192.168.0.30/ - Microsoft Internet Explorer

FileEditViewFavoritesToolsHelp

Back

Search

Favorites

Media

Addresshttp://192.168.0.30GoLinksNorton AntiVirus

D-Link

Ethernet to Wireless Bridge

DWL-810

Information

Wireless

IP Address

Stations

Admin

Help

About

Help

Information

Wireless

IP Address

Stations

Admin

Information about the bridge.

On this page you can configure the 802.11b wireless settings. Any new settings will not take effect until the bridge is rebooted.

On this page you can configure the IP address used by the Web and TFTP servers running on this bridge. For "Static" mode, the IP address setting are given by input. For "DHCP" mode, these settings may be overridden by a DHCP server on your network. Any new IP settings will not take effect until the bridge is rebooted.

Information about the stations that are being bridged.

On this page you can change the password, reboot the bridge, or reset all settings to their factory defaults. If you have changed any settings it is necessary to reboot the bridge for the new settings to take effect (however changes in the Password, Bridge Name and "Allow Upgrade Uploads" checkbox will be effective immediately).

DoneInternet

