

Found New Hardware Wizard



Welcome to the Found New Hardware Wizard

This wizard helps you install software for:

D-Link D\WL-900AP USB BRIDGE Device



If your hardware came with an installation CD or floppy disk, insert it now.

What do you want the wizard to do?

- ☐ Install the software automatically (Recommended)
- ☒ Install from a list or specific location (Advanced)

Click Next to continue.

< Back

Next >

Cancel

Found New Hardware Wizard

Please choose your search and installation options.



- ☒ Search for the best driver in these locations.

Use the check boxes below to limit or expand the default search, which includes local paths and removable media. The best driver found will be installed.

☐ Search removable media (floppy, CD-ROM...)

☒ Include this location in the search:

D:\CDS for Products\D\WL-900ap\USB_DRV

Browse

- ☐ Don't search. I will choose the driver to install.

Choose this option to select the device driver from a list. Windows does not guarantee that the driver you choose will be the best match for your hardware.

< Back

Next >

Cancel

Found New Hardware Wizard

Please wait while the wizard searches...



D-Link DWL-900AP USB BRIDGE Device



< Back

Next >

Cancel

Found New Hardware Wizard



Completing the Found New Hardware Wizard

The wizard has finished installing the software for:



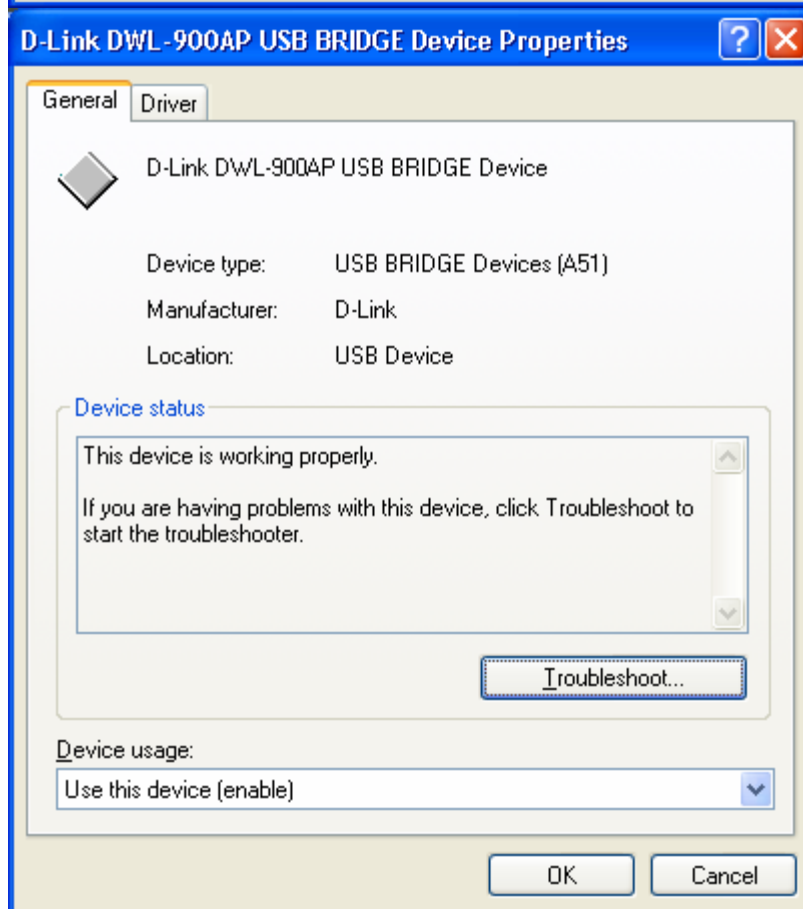
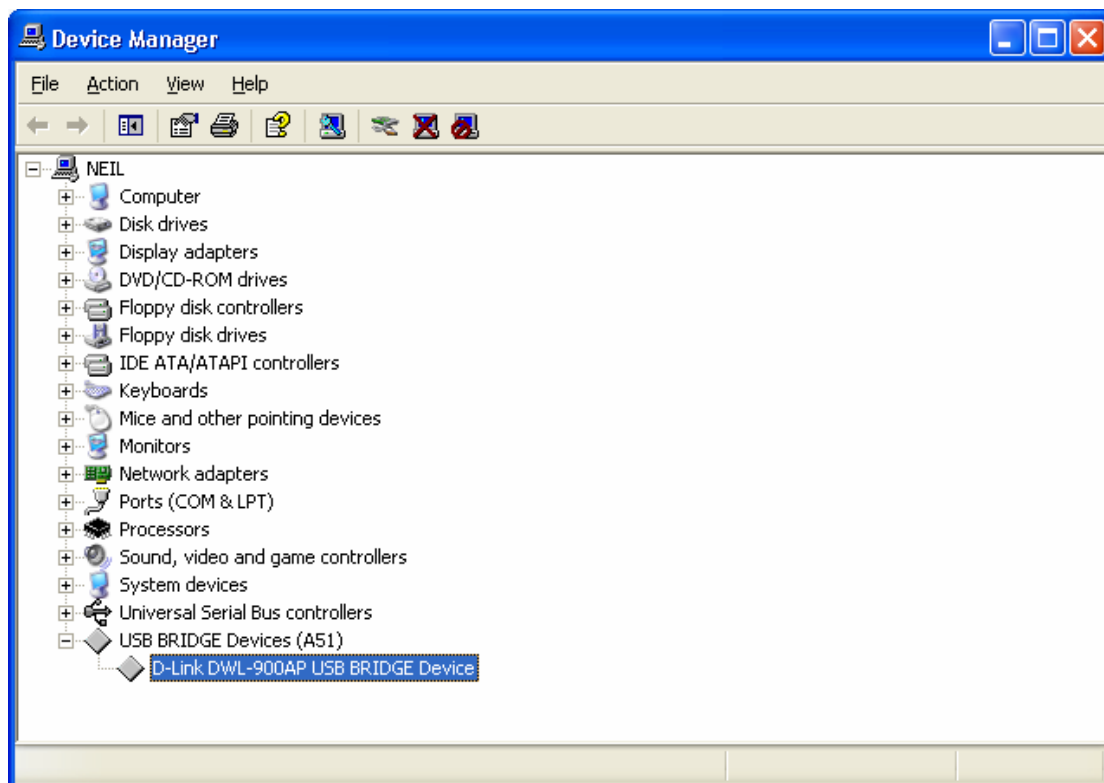
D-Link DWL-900AP USB BRIDGE Device

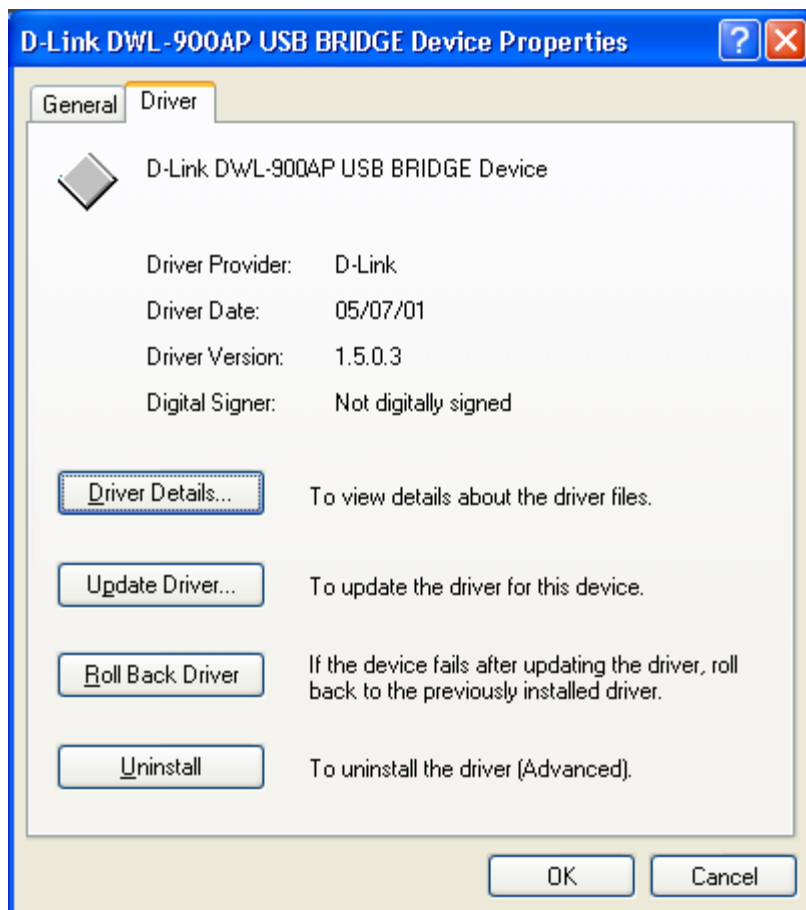
Click Finish to close the wizard.


< Back



Finish

Cancel






InstallShield Wizard 




Welcome to the InstallShield Wizard for D-Link Wireless Access Point Configuration Utility

The InstallShield® Wizard will install D-Link Wireless Access Point Configuration Utility on your computer. To continue, click Next.

< Back **Next >** Cancel

InstallShield Wizard 

Customer Information 

Please enter your information.

Please enter your name and the name of the company for whom you work.

User Name:

Company Name:

InstallShield

< Back **Next >** Cancel

InstallShield Wizard

Choose Destination Location

Select folder where Setup will install files.

Setup will install D-Link Wireless Access Point Configuration Utility in the following folder.

To install to this folder, click Next. To install to a different folder, click Browse and select another folder.

Destination Folder

H:\Program Files\WirelessAP

Browse...

InstallShield

< Back

Next >

Cancel

InstallShield Wizard

Select Program Folder

Please select a program folder.

Setup will add program icons to the Program Folder listed below. You may type a new folder name, or select one from the existing folders list. Click Next to continue.

Program Folders:

D-Link Wireless Access Point

Existing Folders:

Accessories

Administrative Tools

Adobe Acrobat 4.0

Arrow Accounting Software

Arrow Financials

Best Online !

Cool Edit 2000

D-Link DSL Family

D-Link DSL-200 ADSL Modem

InstallShield

< Back

Next >

Cancel

InstallShield Wizard



InstallShield Wizard Complete

Setup has finished installing D-Link Wireless Access Point Configuration Utility on your computer.

< Back

Finish

Cancel

Admin Password [X]

Admin Password :

OK Cancel

USB Configuration Utility [X]

System | Wireless Setting | IP Config | Encryption | About

Fireware Version :

Regulation Domain :

MAC Address :

OK Cancel Apply

USB Configuration Utility [X]

System | **Wireless Setting** | IP Config | Encryption | About

Access Point Name :

Wireless ESSID :

Operational Rate Set :

Wireless Channel :

Operational Mode :

Preferred BSSID :

Advanced Wireless Setting [X]

Fragmentation Threshold : (256 - 2346)

RTS Threshold : (128 - 2346)

Beacon Period : (20 - 1000)

Preamble :

USB Configuration Utility

System | Wireless Setting | **IP Config** | Encryption | About

IP Address : 192 . 168 . 0 . 1

Subnet mask : 255 . 255 . 255 . 0

Gateway : 0 . 0 . 0 . 0

DHCP Client : Enable

Primary Port : Ethernet

OK Cancel Apply

USB Configuration Utility

System | Wireless Setting | IP Config | **Encryption** | About

WEP Type : Disable Active Key ID : None

Authentication Type : Both Type

64 bit

Key1	10	11	12	13	14	Key3	30	31	32	33	34
Key2	20	21	22	23	24	Key4	40	41	42	43	44

128 bit

Key1	10	11	12	13	14	00	00	00	00	00	00	00	00
Key2	20	21	22	23	24	00	00	00	00	00	00	00	00
Key3	30	31	32	33	34	00	00	00	00	00	00	00	00
Key4	40	41	42	43	44	00	00	00	00	00	00	00	00

OK Cancel Apply