

D-Link® Quick Installation Guide

This product works with the following operating system software:

**Windows XP, Windows 2000,
Windows ME, Windows 98SE**



DWL-AG530
*AirPremier AG™ Dualband
Wireless PCI Adapter*

Before You Begin

You must have at least the following:

- A desktop computer with an available PCI 2.2, 32-bit, 5 volt PCI slot
- At least a 500MHz processor and 128MB of memory
- An 802.11a, 802.11b or 802.11g Access Point (for Infrastructure Mode) or another 802.11a, 802.11b, or 802.11g wireless adapter (for Ad-Hoc; Peer-to-Peer networking mode.)

Check Your Package Contents

These are the items included with your DWL-AG530 purchase:



DWL-AG530 Dualband Wireless PCI Adapter



CD-ROM (containing Drivers, Manual and Warranty)

If any of the above items are missing, please contact your reseller.

1

Insert the D-Link CD Into Your Desktop PC

Turn on the computer and

Insert the D-Link AirPremier DWL-AG530 Driver CD in the CD-ROM drive.

The step-by-step instructions that follow are shown in Windows XP. The steps and screens are similar for the other Windows operating systems



Do **NOT** install the DWL-AG530 Wireless PCI Adapter into your computer before installing the driver software from the D-Link CD!

1


Continued...

The Install Screen will appear.

Click **Install Driver**

If the CD Autorun function does not automatically start on your computer, go to **Start** > **Run** and type "**D:\Driver\setup.exe**." If it does start, proceed to the next screen.

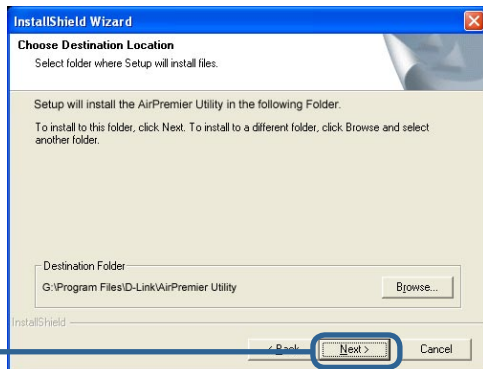
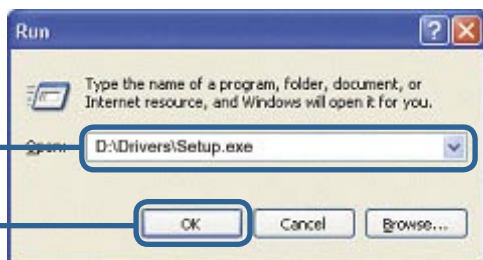
Type "**D:\Driver\setup.exe**."

 The letter "**D**" represents the letter of the CD-ROM drive. Your CD-ROM drive may be a different drive letter.

Click **OK**

Click **Next**

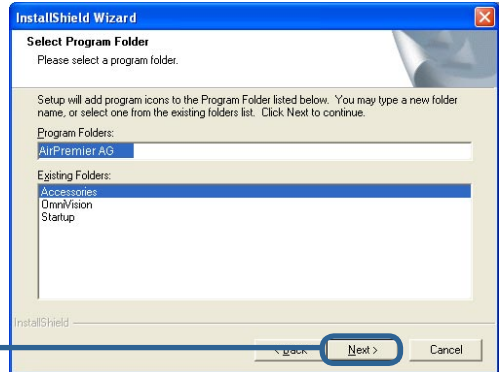
Click **Next**



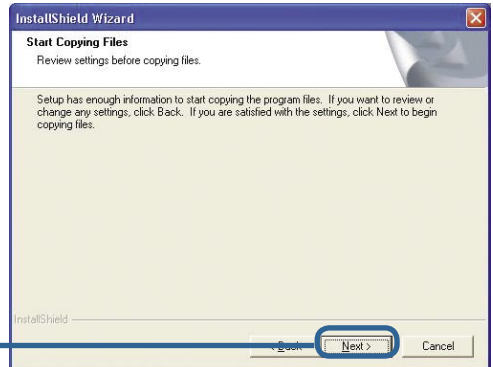
1

Continued...

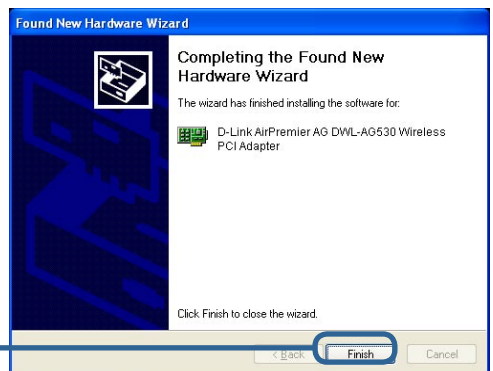
Click **Next**



Click **Next**



Click **Finish**



Shut down your computer

2

Installing the DWL-AG530 Wireless PCI Adapter in Your Computer

- A.** Make sure to turn off your computer and unplug the power cord before you begin. Remove the back or side cover of the computer.



- B.** Carefully guide the DWL-AG530 antenna through the PCI bracket opening adjacent to the PCI slot you intend to use for the DWL-AG530.



- C.** Install the DWL-AG530 carefully, and firmly set it into the available PCI slot (which is typically white or cream-colored).



- D.** Secure the DWL-AG530 back panel bracket with its mounting screw.

- E.** Replace the computer cover.



To avoid damage caused by static electricity, make sure to properly ground yourself by first touching a metal part of your computer to discharge any static electricity before working with the DWL-AG530.

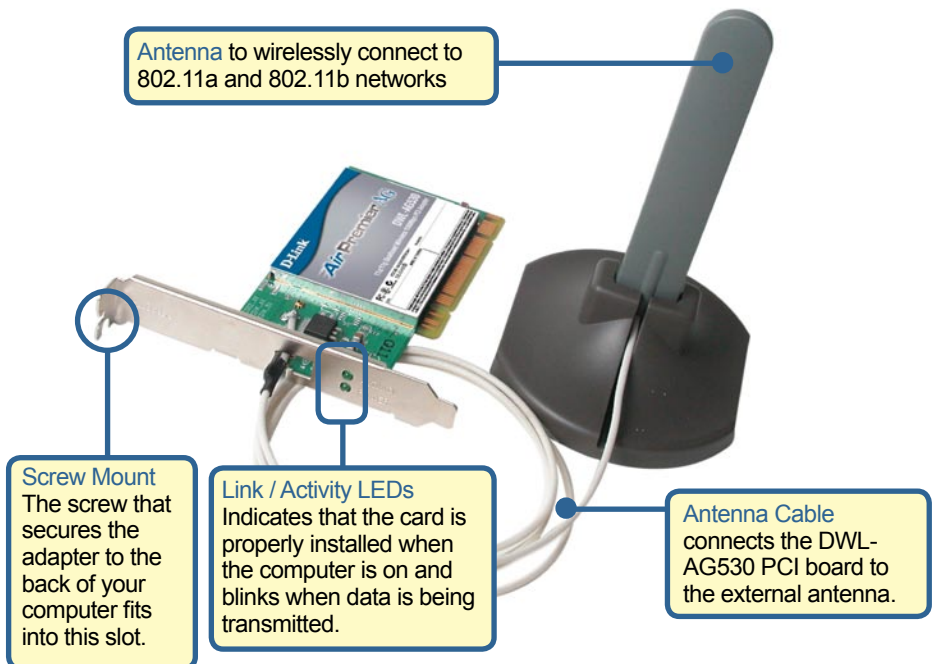
2

Installing the DWL-AG530 Wireless PCI Adapter in Your Computer(cont.)

F. Gently connect the antenna to the antenna stand.



G. Finished!



3

Restart Your Computer

When you restart your computer this **Found New Hardware Wizard (Windows XP)** screen will appear:

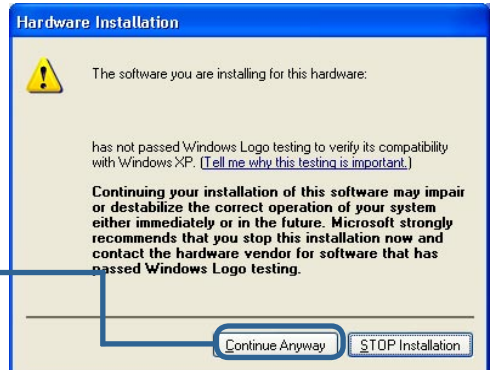
Select **Install the software automatically (Recommended)**

Click **Next**

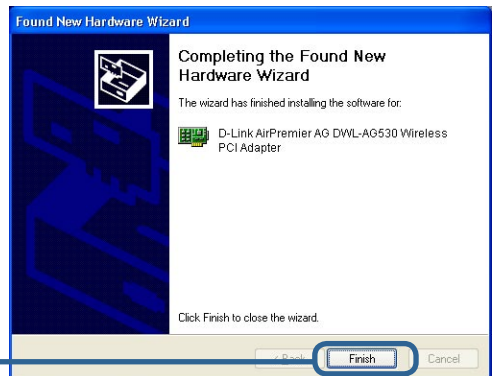


For Windows XP: This **Hardware Installation** alert screen may appear after the desktop computer restarts.

Click **Continue Anyway** to finalize the installation



Click **Finish** to finalize the installation.



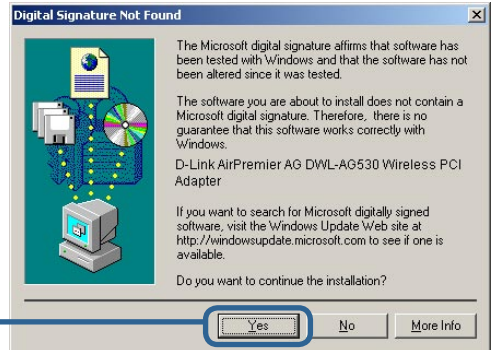
3

Continued...



For Windows 2000, this Digital Signature Not Found screen may appear after your computer restarts.

Click **Yes to finalize the installation.**



The D-Link driver software for this device is undergoing Windows Logo testing. Microsoft certification is pending.

4

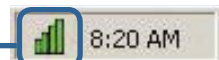
Your Installation is Complete!

After you have finished the installation in Windows XP, 2000, Me, or 98SE, the D-Link *AirPremier AG™* DWL-AG530 **Configuration Utility** will automatically start and the utility icon will appear in the bottom right hand corner of the desktop screen (systray). **If this icon appears **GREEN**, then you have successfully installed the DWL-AG530, are connected to a wireless network and are ready to communicate!**

If the utility icon does not appear, double-click the **shortcut icon that has appeared on your desktop.**



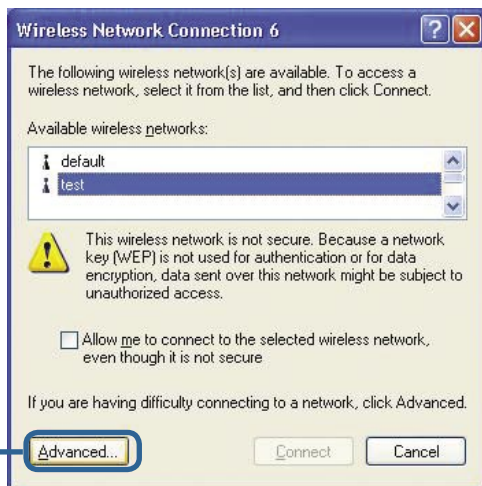
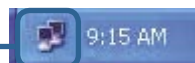
Double-click the **utility icon to use the configuration utility.**



Appendix

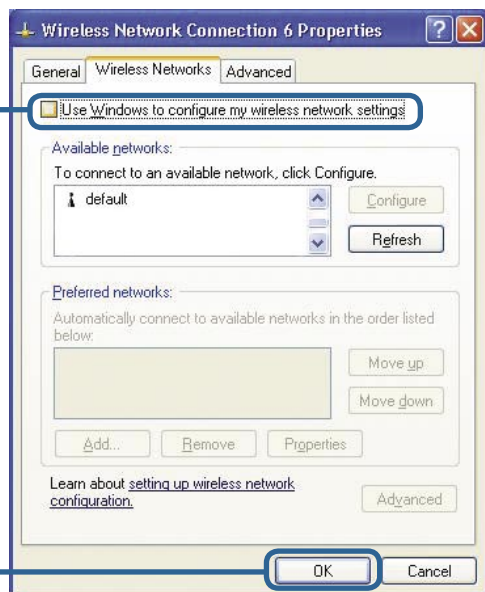
For Windows XP, if you wish to use the *AirPremier AG™* utility, please do the following steps.

Click the **XP Networking icon** to use the Zero Configuration Wireless Settings.



Click **Advanced**

Uncheck **“Use Windows to configure my wireless network settings.”**



Click **OK**

Appendix (Continued)

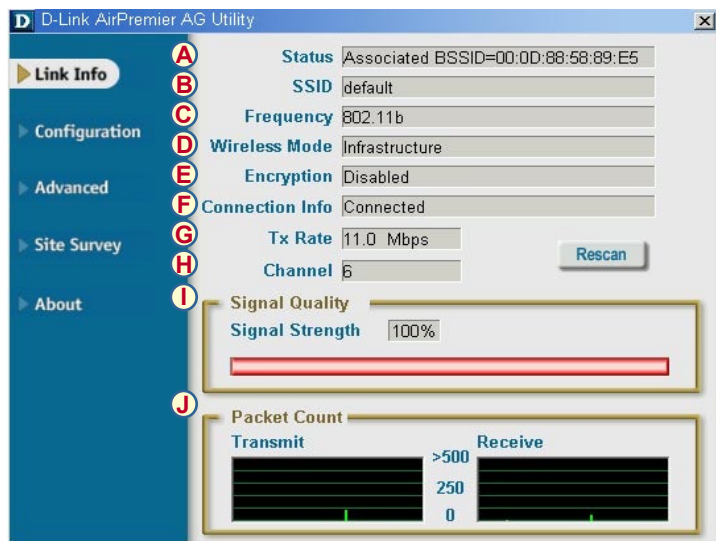
Using the Configuration Utility

A. Status: Displays the MAC address of the access point that is associated with the DWL-AG530.

B. SSID: The Service Set Identifier is the name assigned to the wireless network. The factory SSID setting is set to **default**.

C. Frequency: Displays the current frequency used by the current connection to the access point.

D. Wireless Mode: The factory setting is set to **Infrastructure**. Ad-Hoc mode is used for Peer-to-Peer networking.



E. Encryption: Displays the current encryption status of the wireless connection.

F. Connection Info: Displays connected or authenticated information.

G. Tx Rate: The default setting is **Auto**; meaning, Tx Rate settings are automatically determined by the DWL-AG530 depending on the distance from the access point.

H. Channel: Displays the channel information. By default, the channel is set to 6 and selection is automatically determined by the wireless access point or router.

I. Link Quality / Signal Strength: Displays the Link Quality for the DWL-AG530 wireless connection to the access point. The Signal Strength represents the wireless signal between the access point and the DWL-AG530. The percentage coincides with the graphical bar.

J. Packet Count: Graphically displays the statistics of data transmitted and received.

K. SSID: The Service Set Identifier is the name assigned to the wireless network. The factory SSID setting is set to **default**. Make changes here to match the SSID on existing wireless router or access point.

L. Wireless Mode: The factory setting is set to **Infrastructure**. Ad-Hoc mode is used for Peer-to-Peer networking.

M. Authentication: You can specify the authentication mode for the wireless network. The default setting is set to Open Authentication.

D-Link AirPremier AG Utility

Link Info

Configuration

Advanced

Site Survey

About

K SSID: Default

L Wireless Mode: Infrastructure

M Authentication: Open

N Data Encryption: Enabled

O Key Length:

P IEEE802.1X: Disabled

1

2

3

4

Authentication Config

IP Settings

N. Data Encryption: The default setting is set to Disable. The adapter supports WEP and AES when encryption is enabled.

O. Key Length: When encryption is enabled, you will have the option to specify the level and key format of the encryption used. Select the appropriate Key Index: 1-4 and enter ACSII or hexadecimal digits in the appropriate field.

P. IEEE 802.1X: When encryption is enabled, you will have the option to specify if you wish to use 802.1x authentication.

IP Address Configuration

To connect to a network, **make sure the proper network settings are configured for DWL-AG530.**

For Microsoft Windows XP:

Go to **Start > Right-click on My Network Places > select Properties > Right-click and select Properties on the Network Connection associated with the DWL-AG530.**

Click **Internet Protocol (TCP/IP)**

Click **Properties**

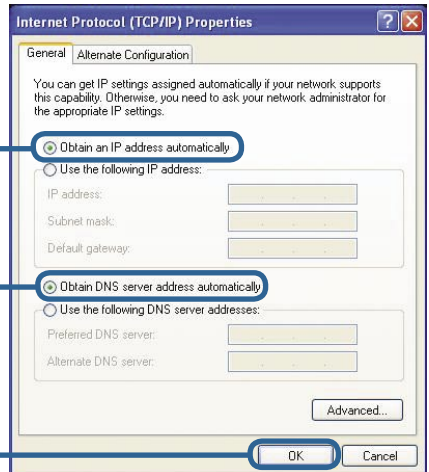
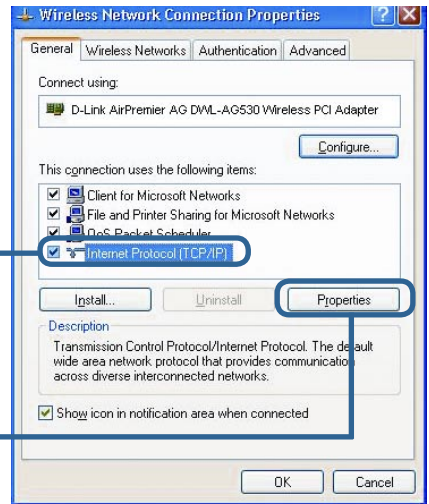
Dynamic IP address setup

Used when a **DHCP server** is available on the local network. (i.e. Router)

Select **Obtain an IP address automatically** (if the wireless router or access point has DHCP server enabled)

Select **Obtain DNS server address automatically**

Click **OK**



Static IP address setup

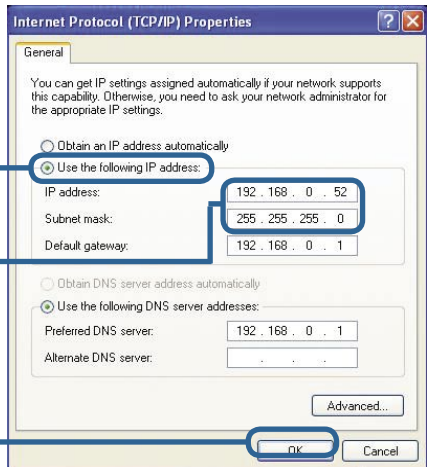
Used when a **DHCP server** is not available on the local network.

Select **Use the following IP address**

IP address: **192.168.0.52**
Subnet mask: **255.255.255.0**

Input a static IP address in the same range as the wireless router or access point.

Click **OK**

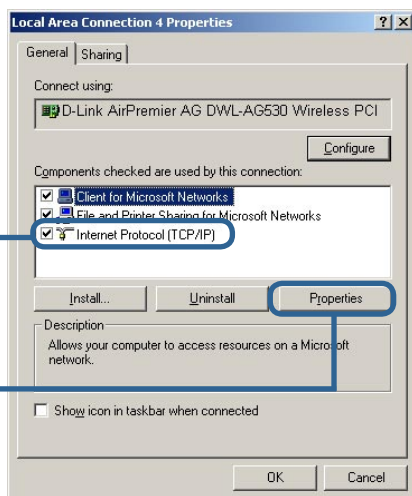


For Windows 2000 users:

Go to **Start > Settings > Network and Dial-up Connections > Right Click and select Properties** on the **Local Area Connection** associated with the DWL-AG530

Click **Internet Protocol (TCP/IP)**

Click **Properties**



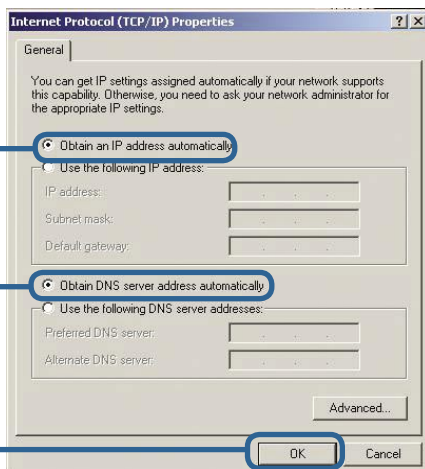
Dynamic IP address setup

Used when a **DHCP server** is available on the local network. (i.e. Router)

Select **Obtain an IP address automatically** (if the wireless router or access point has DHCP server enabled)

Select **Obtain DNS server address automatically**

Click **OK**



Static IP address setup

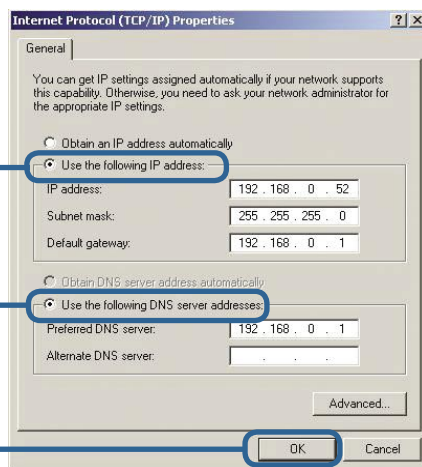
Used when a **DHCP server** is not available on the local network.

Select **Use the following IP address**

IP address: 192.168.0.52
Subnet mask: 255.255.255.0

Input a static IP address in the same range as the wireless router or access point.

Click **OK**



[illegible]

Technical Support

You can find software updates and user documentation on the D-Link websites.

D-Link provides free technical support for customers within Canada, the United Kingdom, and Ireland.

Customers can contact D-Link technical support through our websites, or by phone.

For Customers within The United Kingdom & Ireland:

D-Link UK & Ireland Technical Support over the Telephone:

08456 12 0003 (United Kingdom)

+44 8456 12 0003 (Ireland)

Lines Open

8.00am-10.00pm Mon-Fri

10.00am-7.00pm Sat & Sun

D-Link UK & Ireland Technical Support over the Internet:

<http://www.dlink.co.uk>

<ftp://ftp.dlink.co.uk>

For Customers within Canada:

D-Link Canada Technical Support over the Telephone:

1-800-361-5265 (Canada)

Monday to Friday 7:30 am to 3:00 am ET

Saturday and Sunday 9:00am to 12:00am ET

D-Link Canada Technical Support over the Internet:

<http://support.dlink.ca>

email: support@dlink.ca

